



eastbank

public kickoff meeting

tues., may 11
6:00p

email: eastbankinfo@nashville.gov

web: eastbankstudy.nashville.gov



1. welcome & agenda

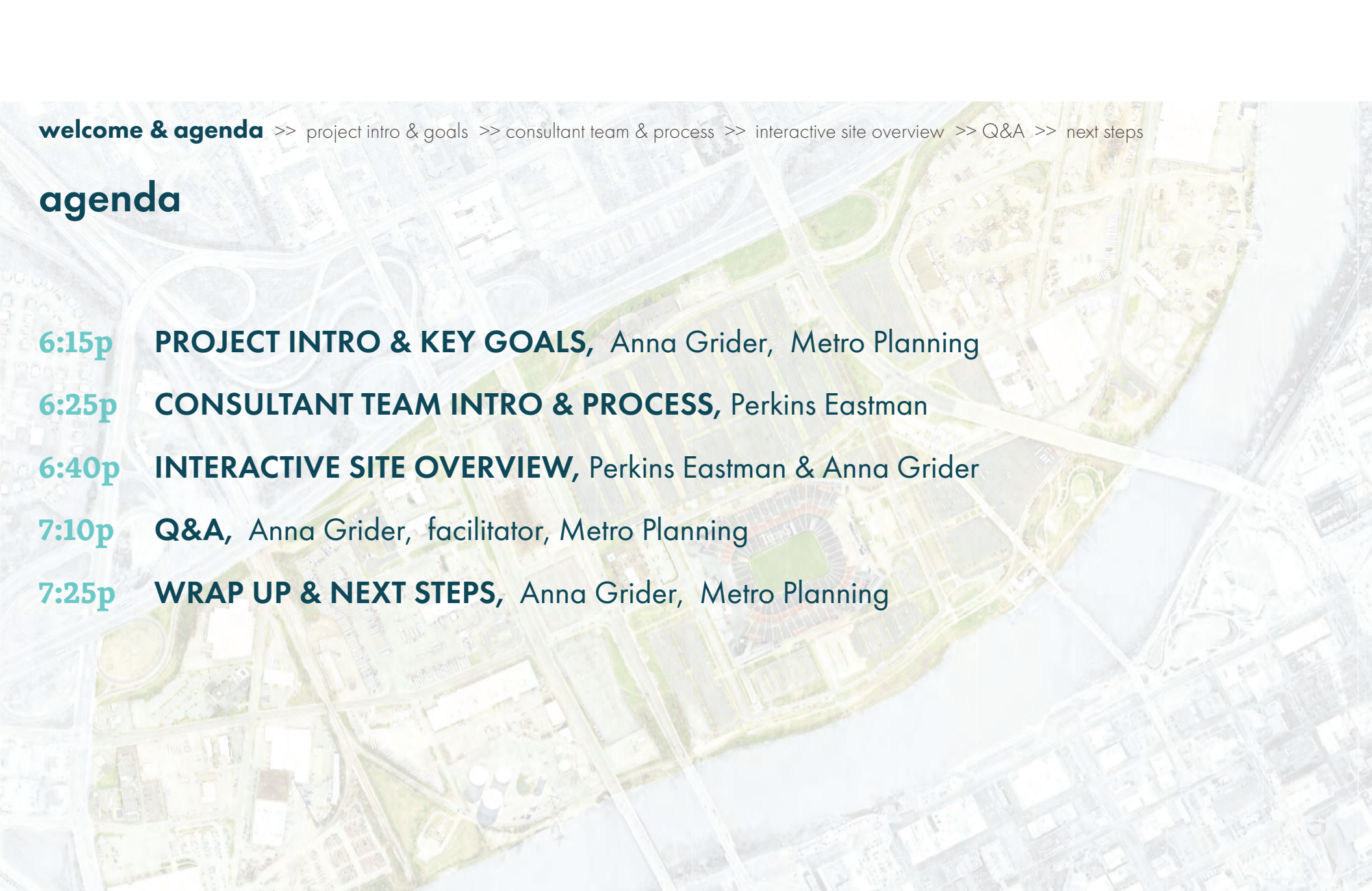
Lucy Kempf, Executive Director, Metro Planning

Anna Grider, facilitator, Metro Planning



virtual meeting logistics

- » Joining via phone? You're in listen only mode.
- » Video meeting: <https://eastbankstudy.Nashville.gov>
- » Attendees' microphones are muted on entry.
- » Coming up later: Interactive exercise using [menti.com](https://www.menti.com).
- » Q&A panel & Facebook Live comments.
- » Watch later: Recording to be posted on YouTube.



welcome & agenda >> project intro & goals >> consultant team & process >> interactive site overview >> Q&A >> next steps

agenda

6:15p **PROJECT INTRO & KEY GOALS,** Anna Grider, Metro Planning

6:25p **CONSULTANT TEAM INTRO & PROCESS,** Perkins Eastman

6:40p **INTERACTIVE SITE OVERVIEW,** Perkins Eastman & Anna Grider

7:10p **Q&A,** Anna Grider, facilitator, Metro Planning

7:25p **WRAP UP & NEXT STEPS,** Anna Grider, Metro Planning



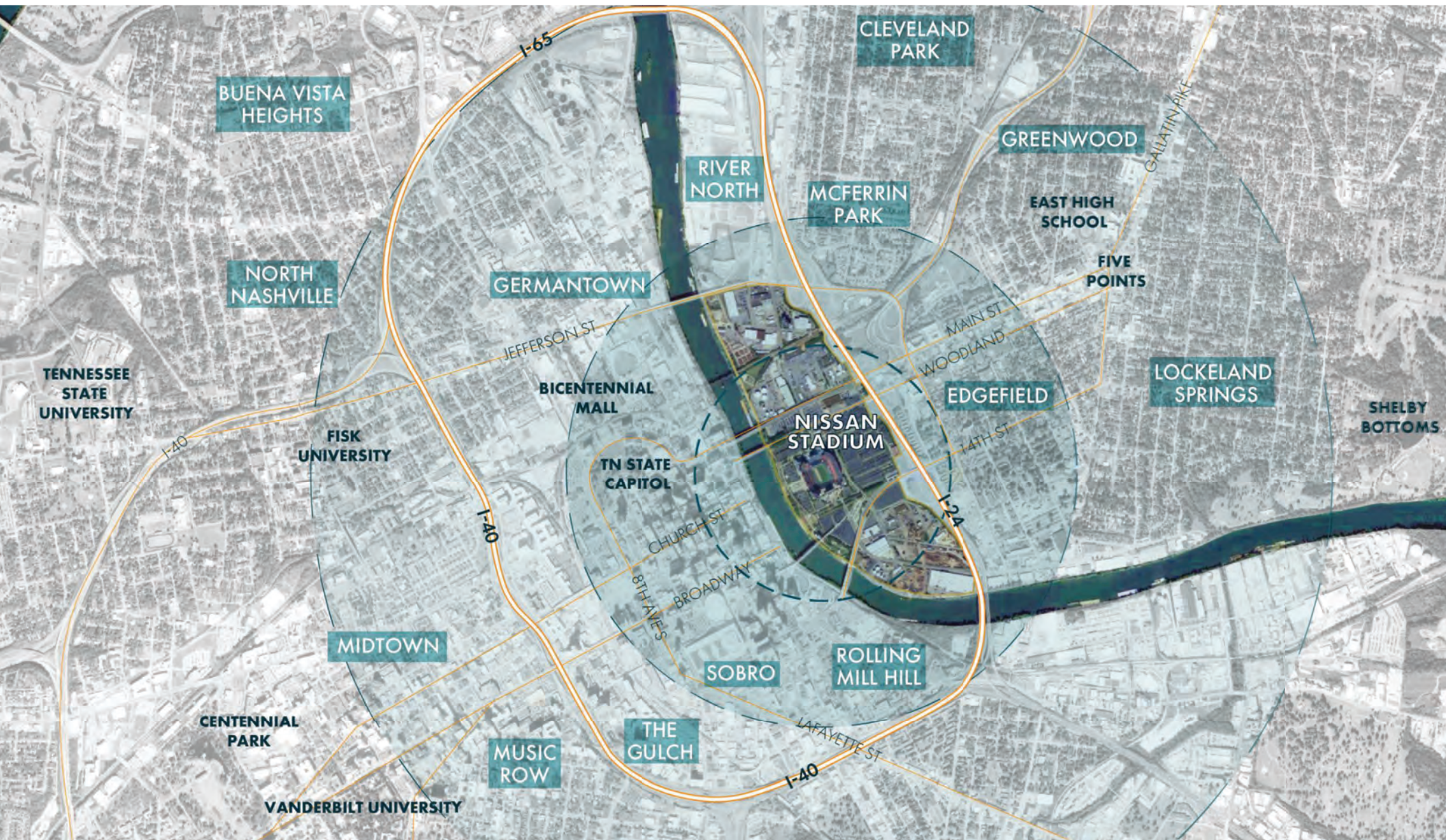
2. project intro & key goals

Anna Grider, Metro Planning

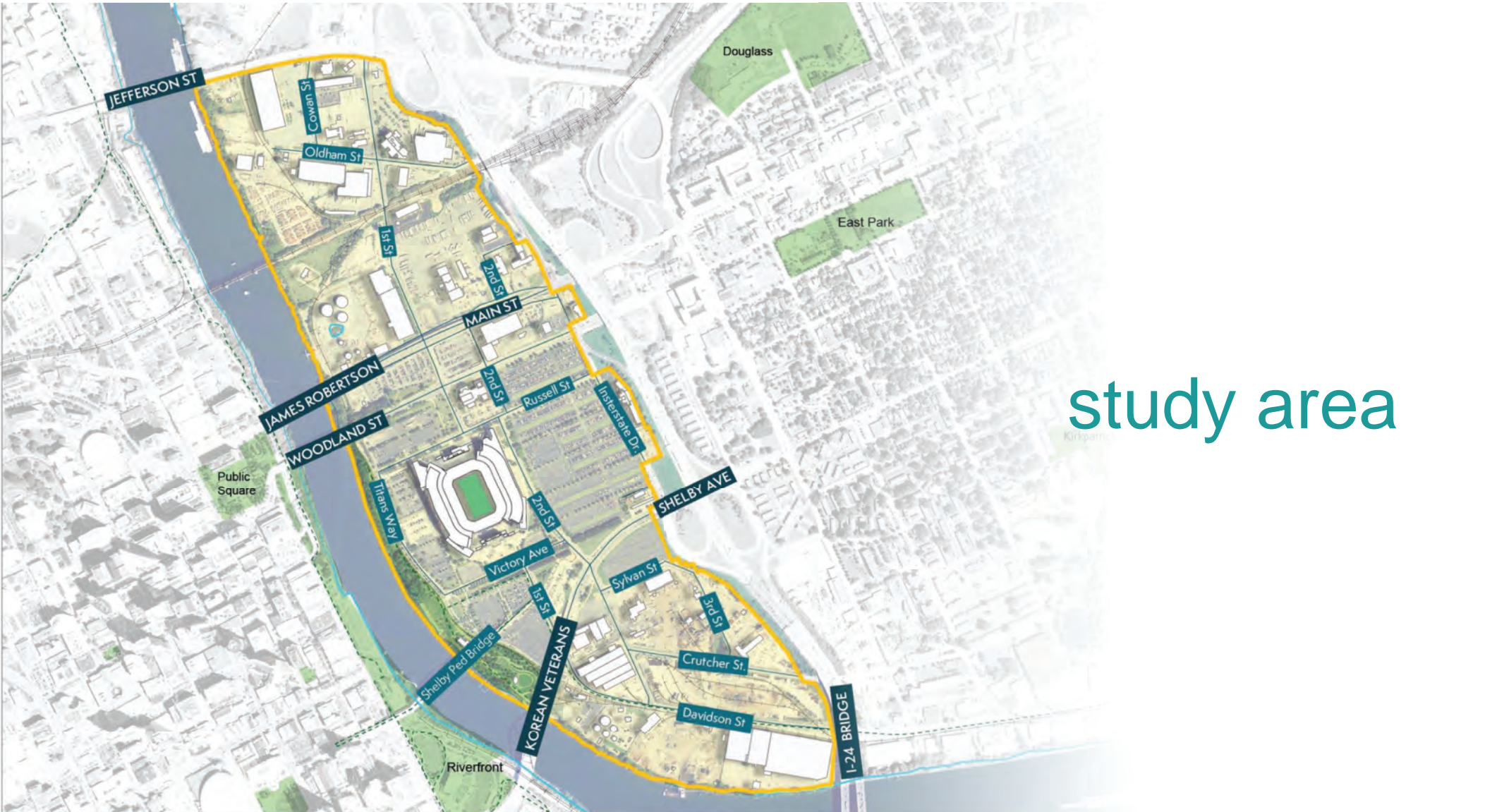


The East Bank Planning Study is a **public process** led by the Metro Nashville Planning Department with the goal of creating a **long-range plan for the East Bank**.

The plan will guide the **future development** of the East Bank.



welcome & agenda >> **project intro & key goals** >> consultant team & process >> interactive site overview >> Q&A >> next steps



study area

study goal

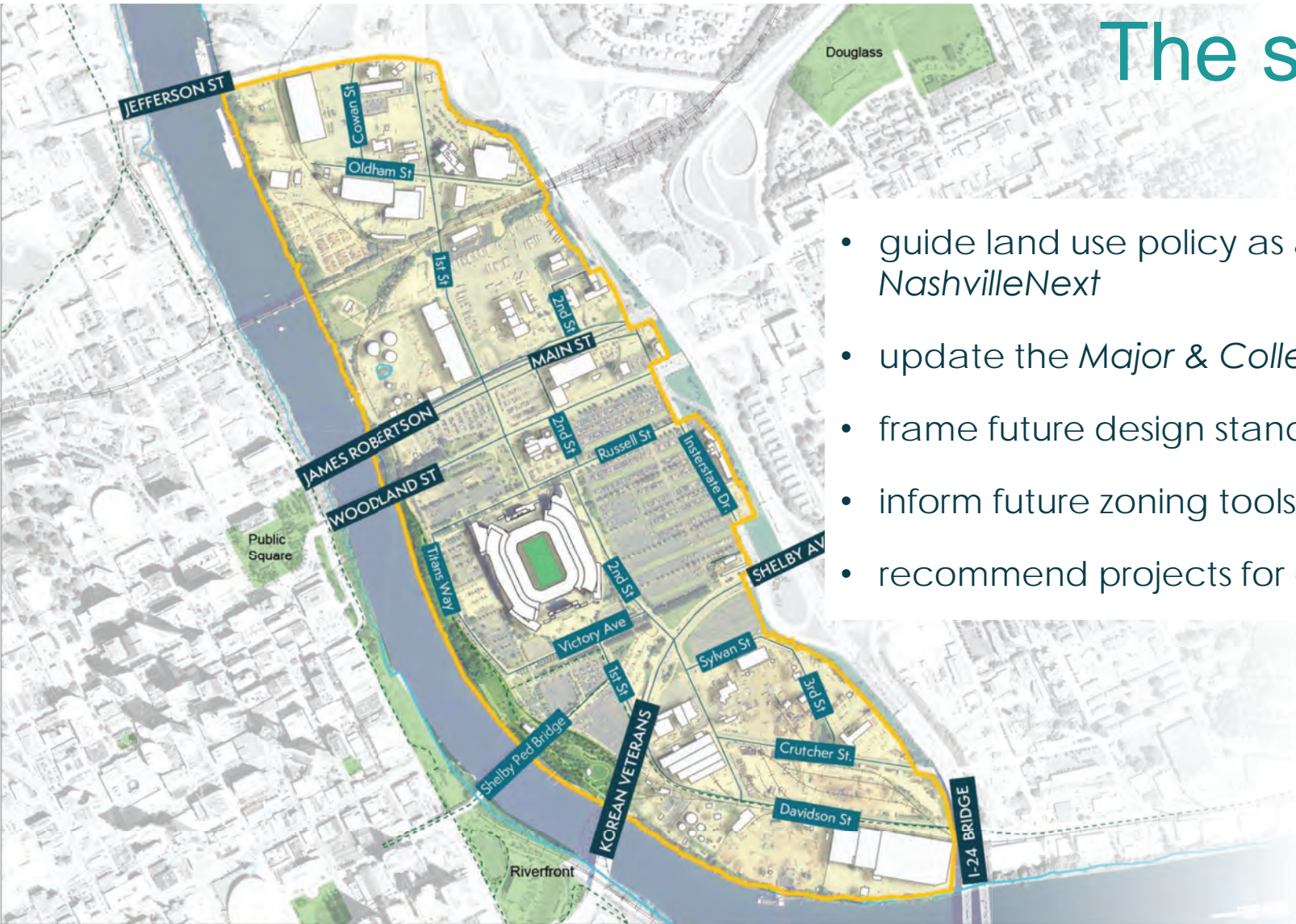
to conceive a connected
+ cohesive public open
space network that
reinforces the river as a
centerpiece for Nashville.

key goals

1. Celebrate & enhance the river
2. Plan for new vibrant, urban East Bank neighborhoods for all Nashvillians
3. Establish a multi-modal vision for all modes of transportation
4. Improve north-south street connectivity
5. Identify a connected network of high-quality open spaces
6. Plan for long-term environmental resiliency

The study will

- guide land use policy as an update to *NashvilleNext*
- update the *Major & Collector Street Plan*
- frame future design standards
- inform future zoning tools
- recommend projects for capital investment



An aerial photograph of a city, likely East Bank, showing a complex network of roads, bridges, and green spaces. The image is overlaid with a semi-transparent blue filter. The text is positioned in the center-right of the image.

3. consultant team & process

Vaughan Davies, Perkins Eastman

Eric Fang, Perkins Eastman

Ed Henley, Pillars Development

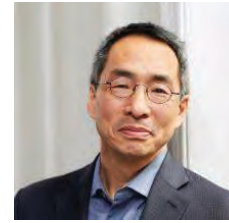
Deb Varallo, Varallo Public Relations

welcome & agenda >> project intro & goals >> **consultant team & process** >> interactive site overview >> Q&A >> next steps

THE PERKINS EASTMAN TEAM



VAUGHAN
PRINCIPAL-IN-CHARGE
PERKINS EASTMAN



ERIC
PROJECT LEADER
PERKINS EASTMAN



RICHIE
OPEN SPACE PLAN/
GREEN SPACE NETWORK
HDLA



DEB
COMMUNITY OUTREACH
VARALLO PR



EDWARD
PLAN DEVELOPMENT/
ENGAGEMENT
PILLARS



KATE
MARKET ANALYSIS
HR&A



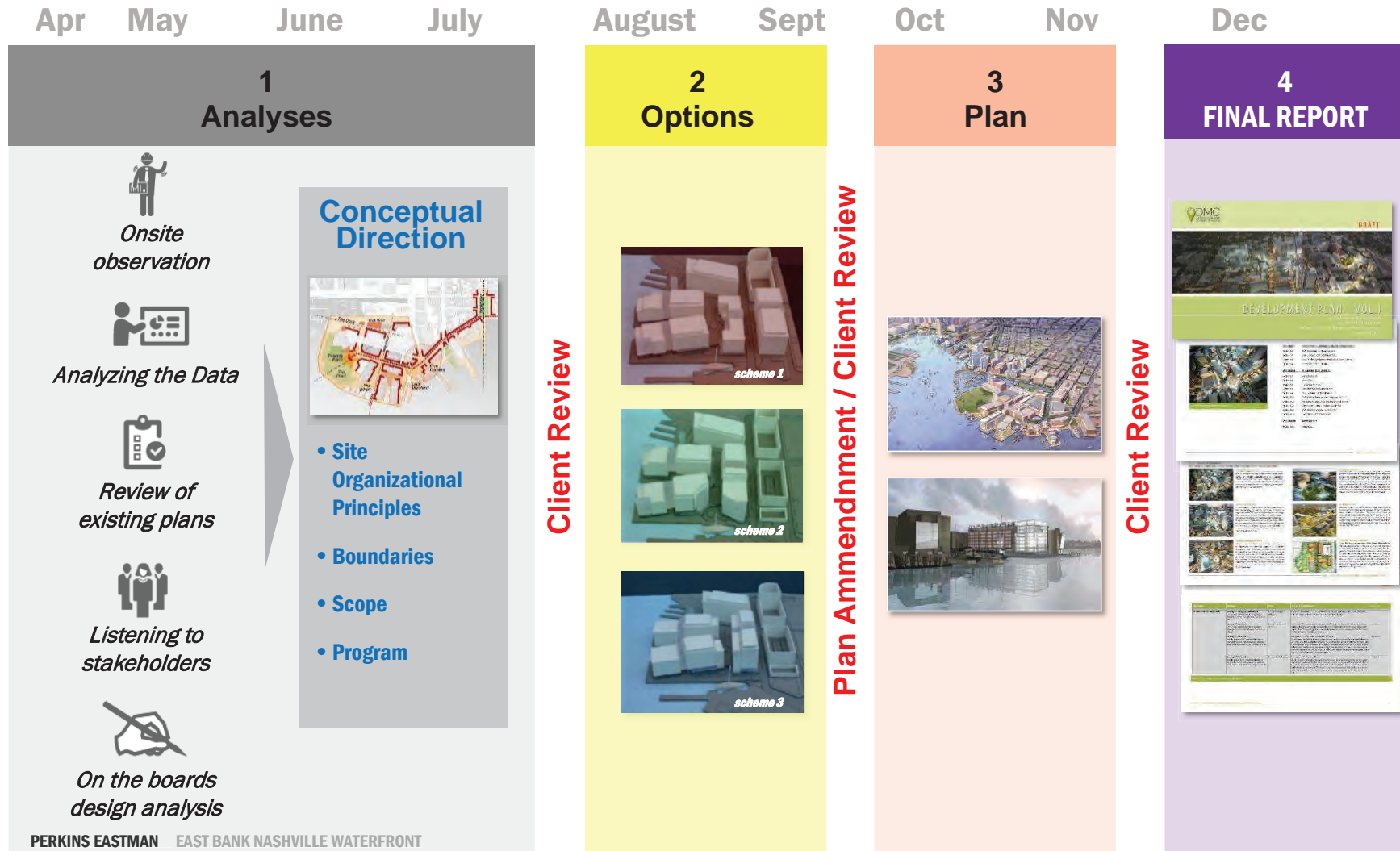
Mary
TRANSPORTATION
WSP

PERKINS EASTMAN

CONVERGENT APPROACH



welcome & agenda >> project intro & goals >> **consultant team & process** >> interactive site overview >> Q&A >> next steps



7

OUR DESIGN APPROACH



- Start with the water
- Connect all neighborhoods to the water
- Emphasis is on the Public Realm
- Focus on Implementation
- Build Consensus as we go
- Build on the unique qualities of the place

welcome & agenda >> project intro & goals >> **consultant team & process** >> interactive site overview >> Q&A >> next steps



- All start together
- Online and in-person
- All ideas are heard
- No surprises!



BUILDING CONSENSUS AS WE GO



Building Consensus:

- Meet one-on-one with community leaders
- Outreach to neighborhood groups
- Pop-up meetings / informational booths at community events
- Presentations to organizations and groups
- Community meetings throughout the project with opportunities for feedback and input.



Listening & Feedback:

- Project website
- Online surveys
- Paper surveys – drop boxes in the community
- Focus groups
- Facebook Live
- Q&A: via email



BUILDING CONSENSUS AS WE GO



Neighborhood Groups:

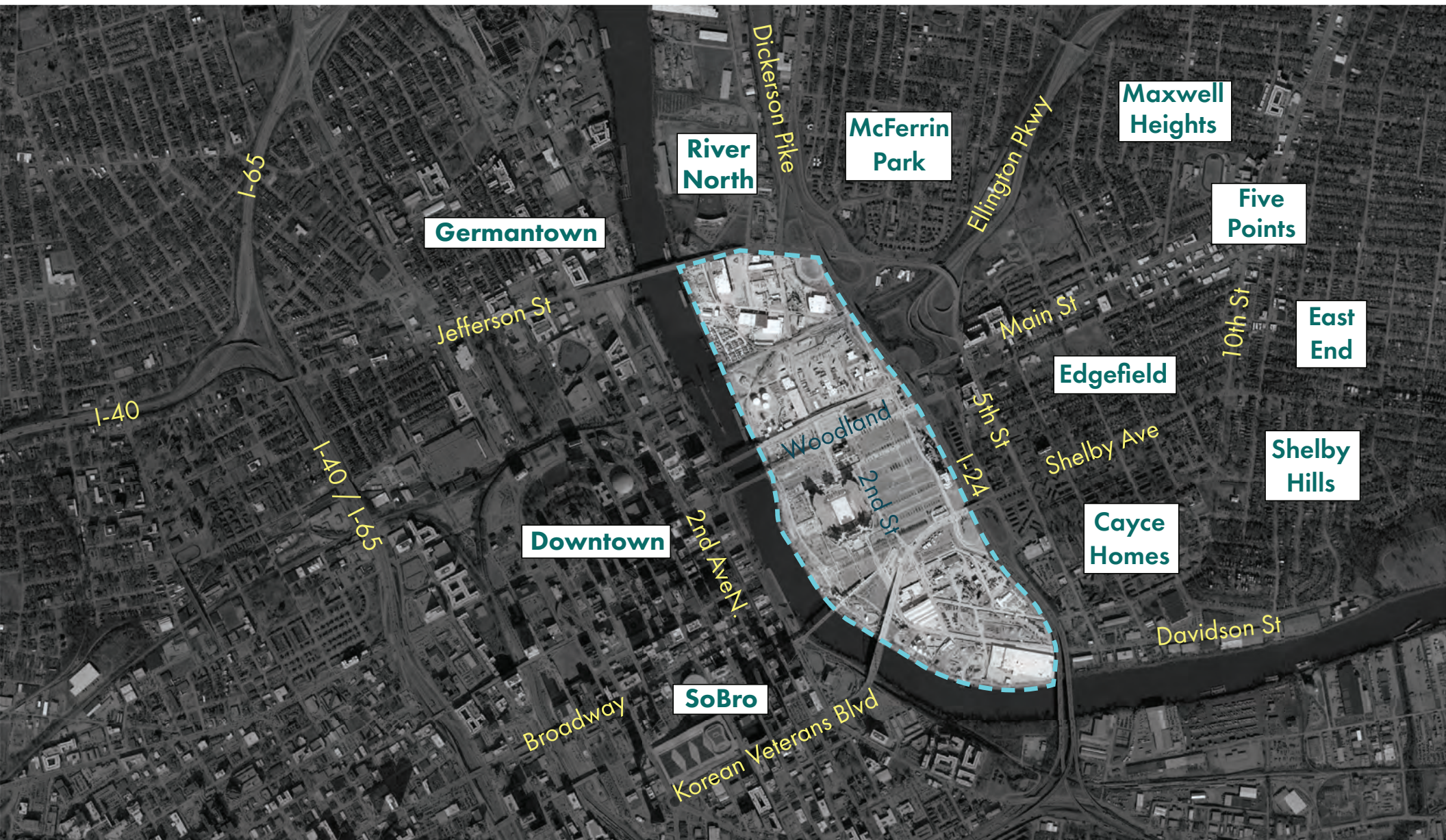
Cayce Place
Friends of Shelby Park
Maxwell Heights
McFerrin Park
Rosebank Neighbors

Property Owners:

CSX
Citgo
Ingram Barge
PSC Metals
REIT
Titans

Community Organizations:

Catholic Charities
Cross Point Church
Cumberland River Compact
Equity Alliance
IMF
First Church of the Nazarene
Holy Name Catholic Church
Martha O'Brien
Stand Up Nashville
Transit groups
Urban League of Middle TN
Walk Bike Nashville



welcome & agenda >> project intro & goals >> **consultant team & process** >> interactive site overview >> Q&A >> next steps

BUILD ON THE UNIQUE QUALITIES OF **NASHVILLE'S WATERFRONT**

CUMBERLAND RIVER



PERKINS EASTMAN EAST BANK NASHVILLE WATERFRONT

15

BUILD ON THE UNIQUE QUALITIES OF **EAST NASHVILLE** TODAY



PERKINS EASTMAN EAST BANK NASHVILLE WATERFRONT



17

COMPLIMENT NASHVILLE'S DOWNTOWN

HISTORIC DOWNTOWN



PERKINS EASTMAN EAST BANK NASHVILLE WATERFRONT



18



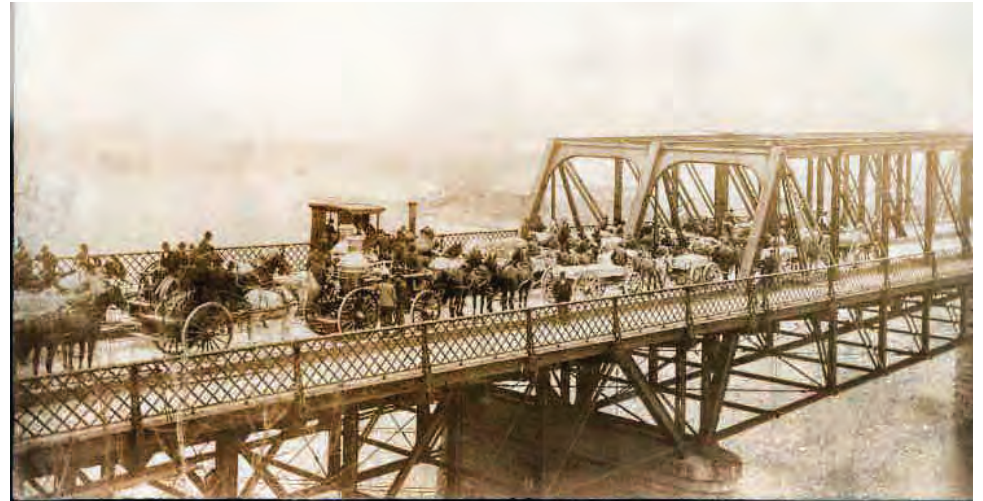
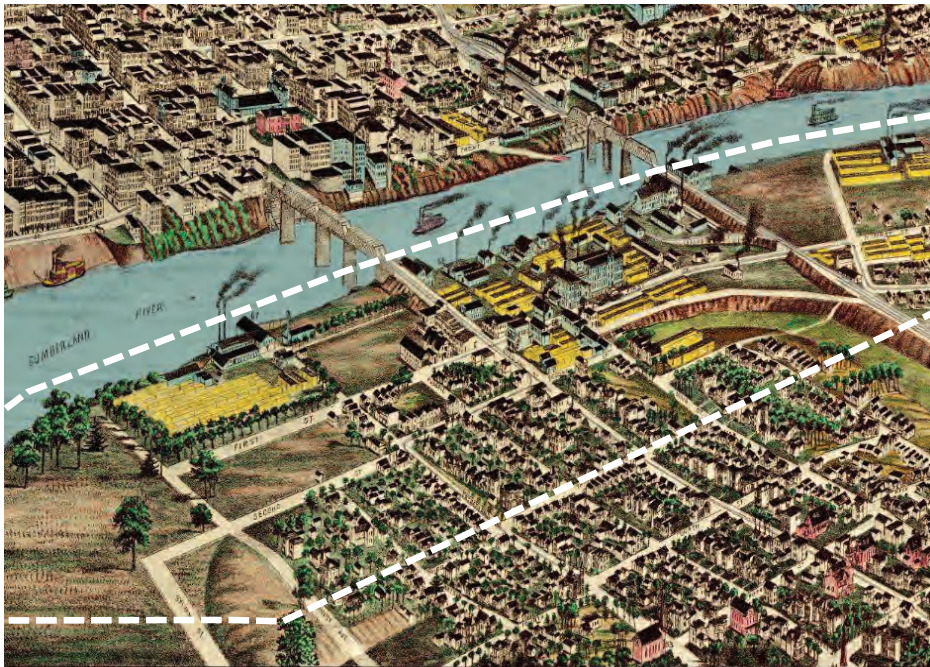
4. interactive site overview

Vaughan Davies, Perkins Eastman

Anna Grider, Metro Planning

past & present

- » Commercial West Bank & working East Bank
- » historic Edgefield community
- » bridging to downtown
- » I-24 as barrier



welcome & agenda >> project intro & goals >> consultant team >> consultant process >> **interactive site overview** >> Q&A >> next steps



Mentimeter

land use & development

- » industrial uses
- » real estate boom & development pressure
- » stadium planning & redevelopment
- » need for housing diversity & employment opportunities for East Bank residents



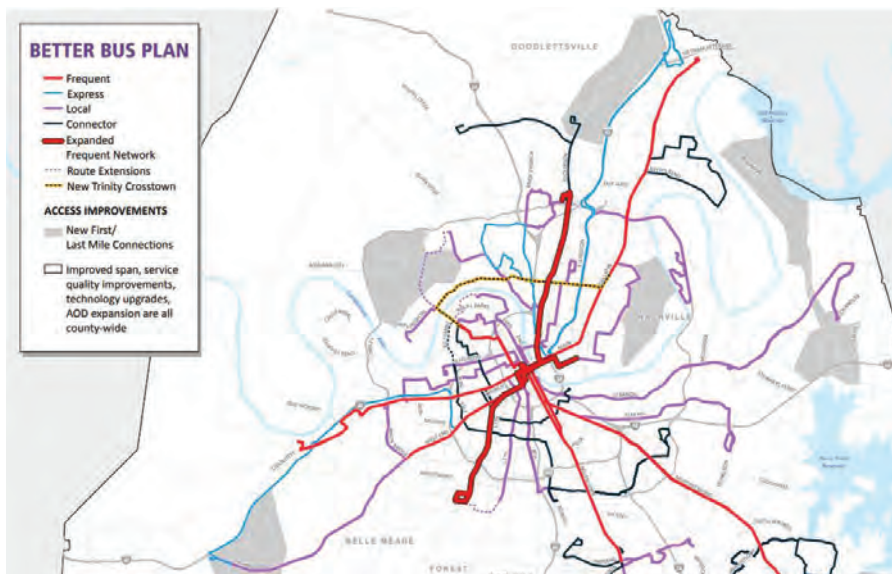
welcome & agenda >> project intro & goals >> consultant team >> consultant process >> **interactive site overview** >> Q&A >> next steps



Mentimeter

mobility & transportation

- » N-S and E-W connections
- » relationships with existing interstate, bridges & railroads
- » congestion & outdated infrastructure
- » opportunities for improved street network & multi-modal transportation options



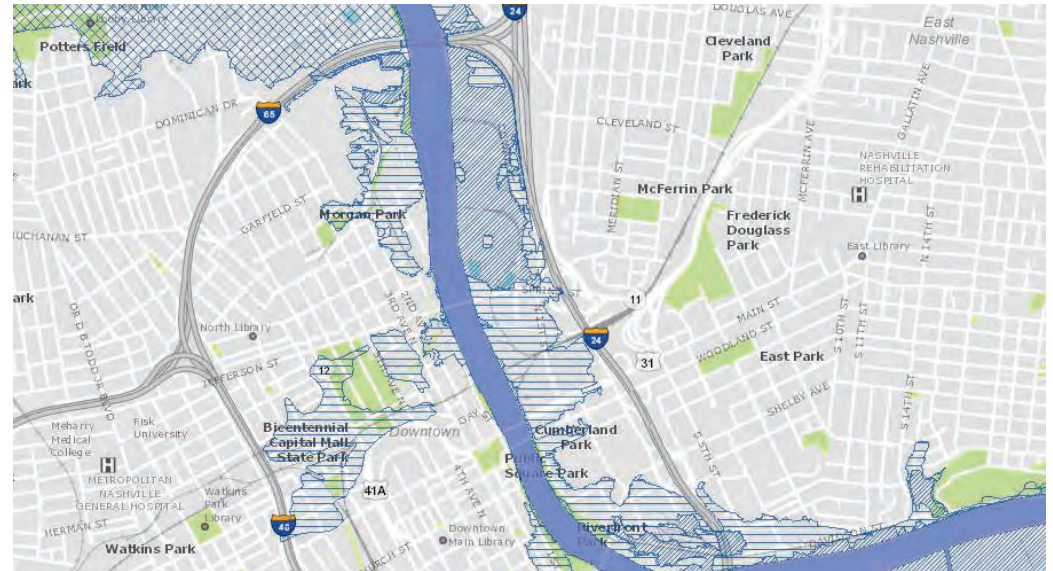
welcome & agenda >> project intro & goals >> consultant team >> consultant process >> **interactive site overview** >> Q&A >> next steps



Mentimeter

the river

- » riverbank conditions
- » river use & identity
- » flood mitigation
- » environmental resiliency
- » backbone/centerpiece of the city

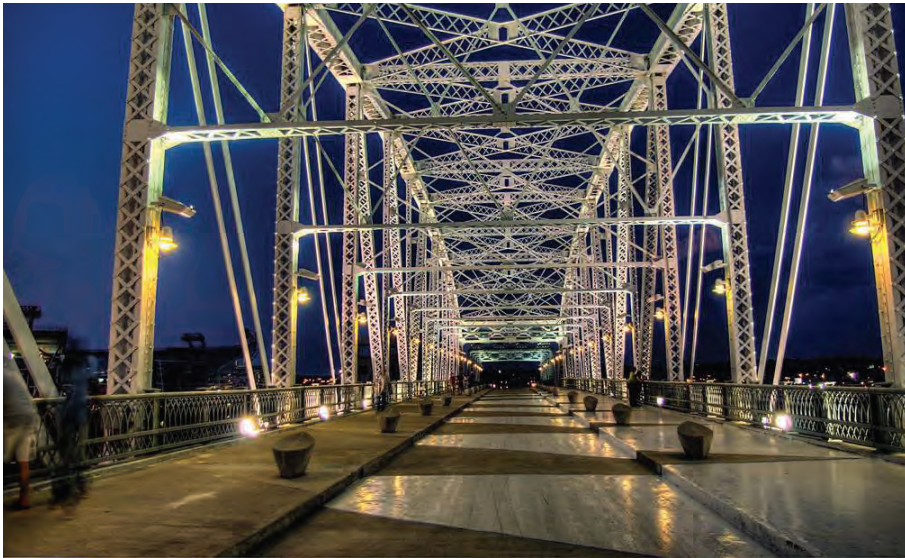


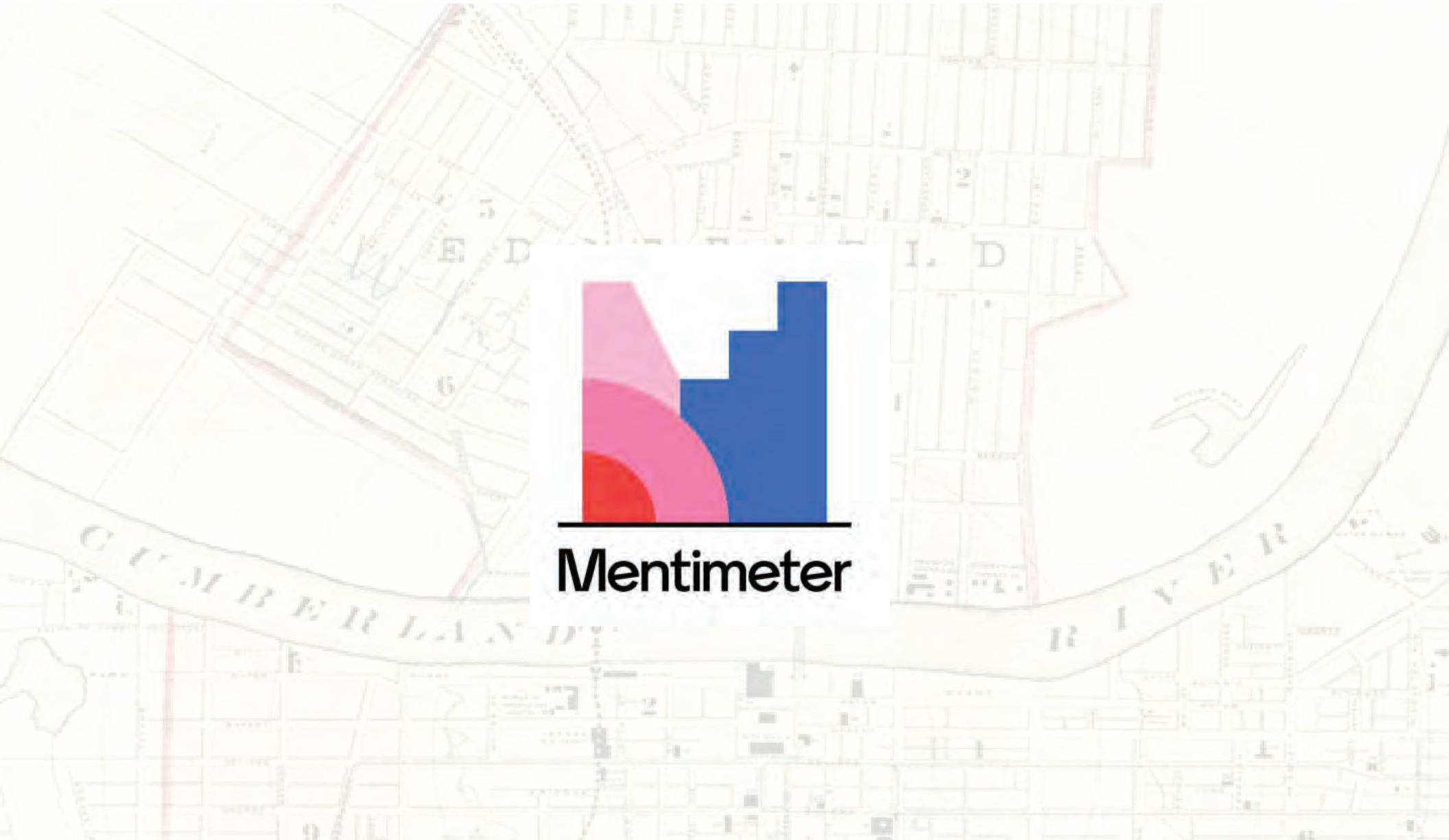
welcome & agenda >> project intro & goals >> consultant team >> consultant process >> **interactive site overview** >> Q&A >> next steps



parks & greenways

- » parks & greenways network on the East Bank & metro-wide
- » opportunities to connect across the river & to East side parks
- » recreational opportunities
- » environmental resiliency







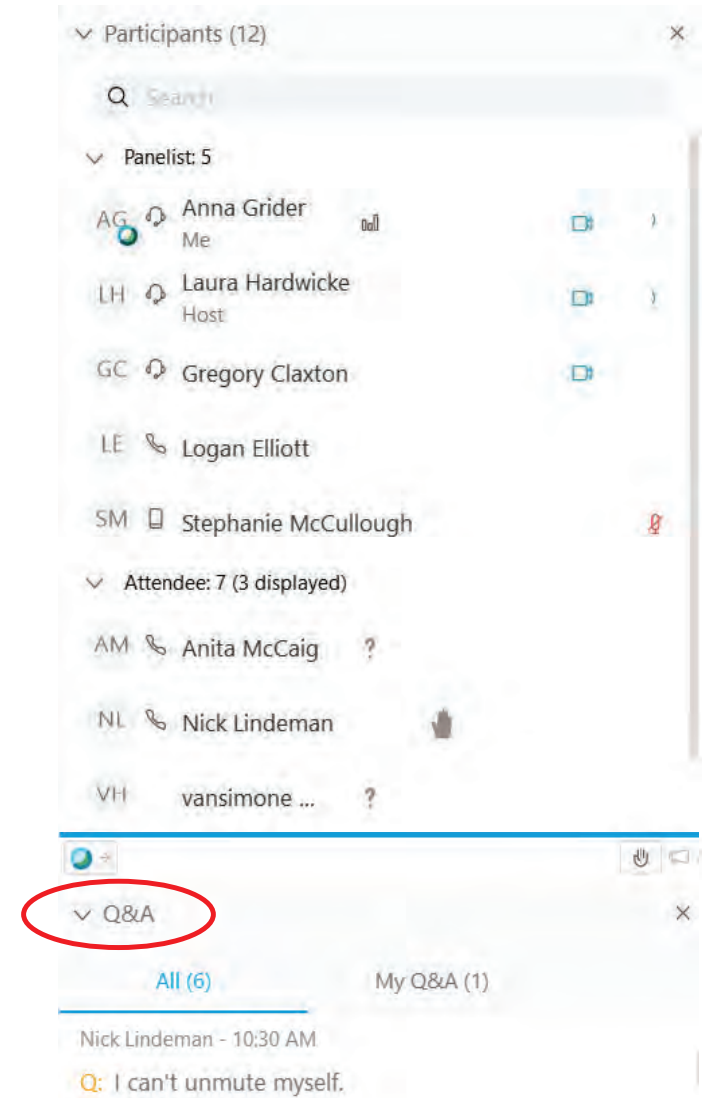
5. Q&A

facilitated by Anna Grider, Metro Planning

Q&A



- Please type your questions in the Q&A box or in the comments on Facebook Live.
- If you have questions & are participating on your phone only, please email eastbankinfo@nashville.gov after the meeting or call 615-862-7199, & leave a message.



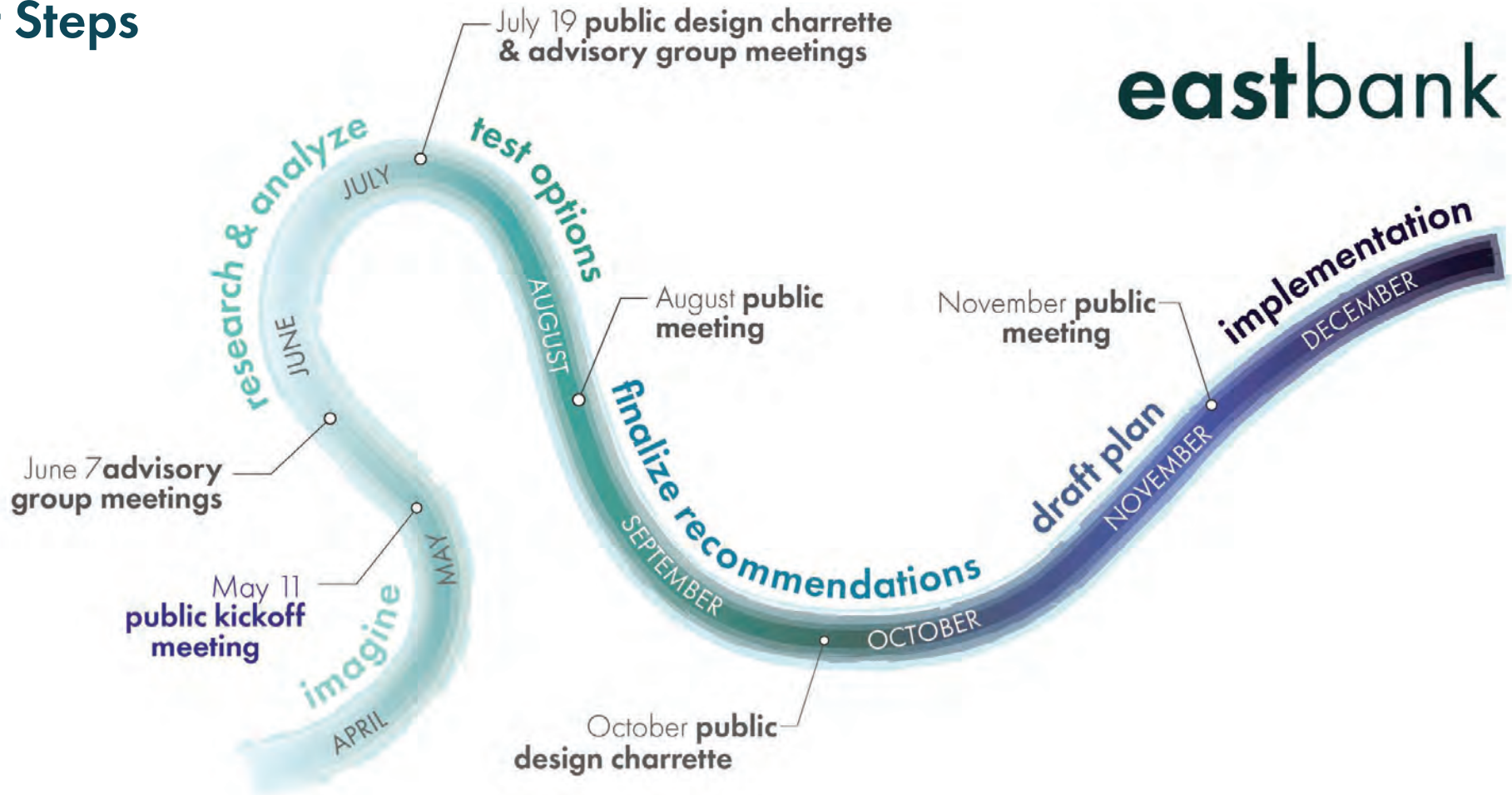


6. Next Steps

Anna Grider, Metro Planning

Next Steps

eastbank



Stay in touch!

web: eastbankstudy.nashville.gov
email: eastbankinfo@nashville.gov