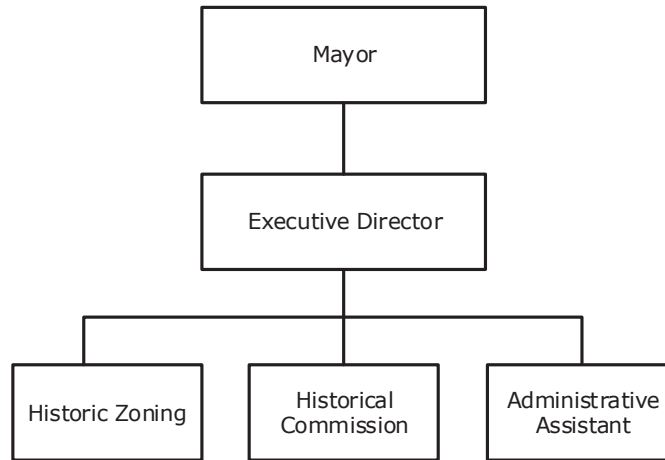




# 11 Historical Commission - At a Glance

## Organizational Structure



---

## Programs

### Administrative

Non-allocated Financial Transactions

### Governmental and Public Partnership

Governmental and Public Partnership

### Historic Zoning

Historic Zoning

### Information, Education and Tourism

Information, Education and Tourism

# 11 Historical Commission - At a Glance

## Budget Changes and Impact Highlights

Recommendation			Impact
<b>Historic Preservationist</b>			
Salary and Fringe Funding	GSD	\$85,900 1.00 FTE	Additional Historic Preservationist position will enable effective maintenance of countywide survey and respond to increasing review requests in a timely manner.
<b>Nashville City Cemetery</b>			
Maintenance Costs	GSD	11,000	Reinstatement of funding for repairs and maintenance at Nashville City Cemetery.
<b>Operational Funds</b>			
Consulting Fees	GSD	3,000	Structural engineering review of demolition applications due to economic hardship will make the best information available for review of applications.
Subscription Fees	GSD	600	Subscriptions to newspapers.com and ancestry.com will enable staff to access information to complete research projects.
Printing Charges	GSD	10,000	Increased printing funds will enable updating and printing of brochures that will promote historical education and services offered by the commissions.
<b>Non-allocated Financial Transactions</b>			
Longevity	GSD	6,600	Reinstatement of longevity pay to support the retention of employees with a significant level of institutional knowledge and commitment
Internal Service Charges*	GSD	10,400	Delivery of centrally provided services including information systems, fleet management, radio, and surplus property
Fringe Benefit Requirements	GSD	11,900	Funds required for projected fringe benefit expenses
Pay Plan Allocation	GSD	49,400	Supports the hiring and retention of a qualified workforce
<b>General Services District Total</b>		\$188,800 1.00 FTE	
<b>TOTAL</b>		\$188,800 1.00 FTE	

\* See Internal Service Charges section for details  
GSD - General Services District