

41 Metro Arts Commission - At a Glance

Mission Metro Arts believes that arts drive a more vibrant and equitable community. We strive to ensure that all Nashvillians have access to a creative life through community investments, artist and organizational training, public art, and direct programs that involve residents in all forms of arts and culture.

Budget Summary

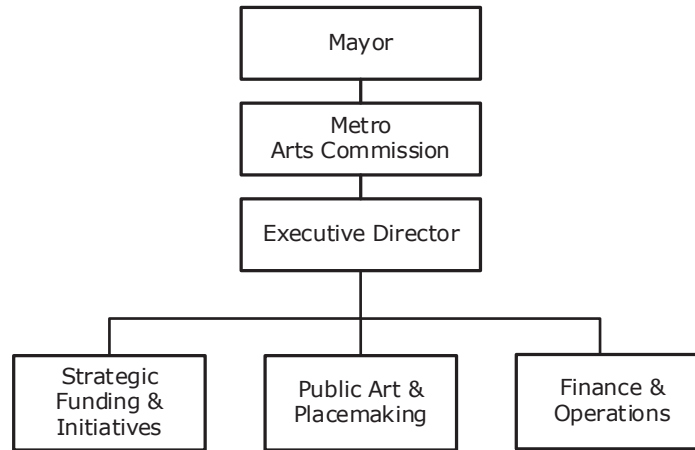
	<u>2019-20</u>	<u>2020-21</u>	<u>2021-22</u>
Expenditures and Transfers:			
GSD General Fund	\$ 3,699,100	\$ 3,457,000	\$ 4,067,300
Special Purpose Fund	202,000	206,200	383,400
Total Expenditures and Transfers	<u>\$ 3,901,100</u>	<u>\$ 3,663,200</u>	<u>\$ 4,450,700</u>
Revenues and Transfers:			
Program Revenue			
Charges, Commissions, and Fees	\$ 0	\$ 0	\$ 0
Other Governments and Agencies	202,000	206,200	0
Other Program Revenue	0	0	0
Total Program Revenue	<u>\$ 202,000</u>	<u>\$ 206,200</u>	<u>\$ 0</u>
Non-program Revenue			
Transfers From Other Funds and Units	\$ 0	\$ 0	\$ 383,400
Total Revenues and Transfers	<u>\$ 202,000</u>	<u>\$ 206,200</u>	<u>\$ 383,400</u>
Expenditures Per Capita	\$ 5.62	\$ 5.19	\$ 6.26

Positions Total Budgeted Positions 12 12 15

Contacts Director: Caroline Vincent email: caroline.vincent@nashville.gov
 Financial Manager: Ian Myers email: ian.myers@nashville.gov
 1417 Murfreesboro Pike, 37217 Phone: 615-862-6720

41 Metro Arts Commission - At a Glance

Organizational Structure



Programs

Community Engagement

Special Projects
Non-allocated Financial Transactions

Grants Coordination

Metro Arts Grants

Public Art

Public Art & Placemaking

41 Metro Arts Commission - At a Glance

Budget Changes and Impact Highlights

Recommendation			Impact
Public Funding for the Arts			
Operating Support Grants	GSD	\$200,000	Increased funding for grants to arts and cultural nonprofits.
Racial Equity Programs			
Staff and Program Funds	GSD	183,700 0.48 FTE	Additional staff and program funds to support expanded art racial equity programs.
Restorative Arts Programs			
Staff and Program Funds	GSD	183,700 1.00 FTE	Additional staff and program funds to support increased services for court involved youth in restorative arts programs.
Position			
Position Increase	GSD	1.00 FTE	Additional Administrative Officer 2 to support community engagement and local artists.
Special Purpose Fund Adjustment			
Percent for Public Art Staff	SPF	383,400	To create special purpose fund to house existing public art employees.
Grant Fund	SPF	(206,200)	To adjust budget for grants. This reflects a timing difference in grant accounting.
Non-allocated Financial Transactions			
Longevity	GSD	2,100	Reinstatement of longevity pay to support the retention of employees with a significant level of institutional knowledge and commitment
Internal Service Charges*	GSD	3,400	Delivery of centrally provided services including information systems, fleet management, radio, and surplus property
Pay Plan Allocation	GSD	37,400	Supports the hiring and retention of a qualified workforce
General Services District Total		\$610,300 2.48 FTEs	
Special Purpose Funds Total		\$177,200	
TOTAL		\$787,500 2.48 FTEs	

* See Internal Service Charges section for details

GSD - General Services District

SPF - Special Purpose Funds