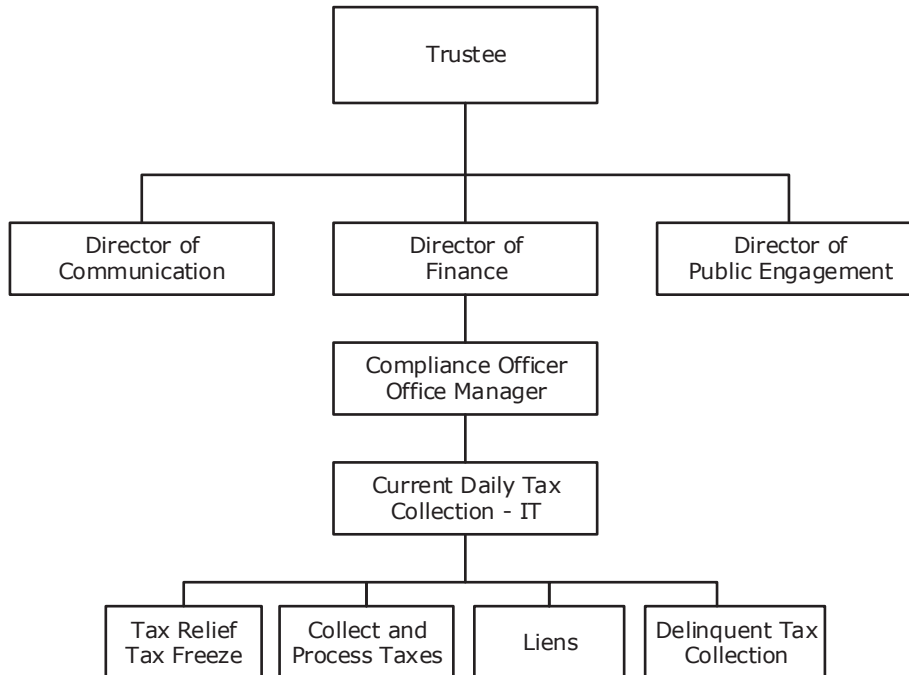


17 Trustee - At a Glance

Mission	To collect Davidson County's Real Property Tax, Public Utility Tax, Personal Property Tax, Central Business Improvement District Tax, Gulch Business Improvement District Tax, South Nashville Business Improvement District (SONA) Tax and Vegetation Liens each year; and administer the Tax Relief Program for the State of Tennessee and Metro Government, and the Davidson County Tax Freeze Program.			
Budget Summary	<u>2019-20</u>	<u>2020-21</u>	<u>2021-22</u>	
Expenditures and Transfers:				
GSD General Fund	\$ 2,367,100	\$ 2,608,600	\$ 2,873,800	
Total Expenditures and Transfers	<u>\$ 2,367,100</u>	<u>\$ 2,608,600</u>	<u>\$ 2,873,800</u>	
Revenues and Transfers:				
Program Revenue				
Charges, Commissions, and Fees	\$ 0	\$ 0	\$ 0	
Other Governments and Agencies	0	0	0	
Other Program Revenue	0	0	0	
Total Program Revenue	\$ 0	\$ 0	\$ 0	
Non-program Revenue	\$ 0	\$ 0	\$ 0	
Transfers From Other Funds and Units	0	0	0	
Total Revenues and Transfers	<u>\$ 0</u>	<u>\$ 0</u>	<u>\$ 0</u>	
Expenditures Per Capita	\$ 3.41	\$ 3.70	\$ 4.04	
Positions	Total Budgeted Positions	28	27	28
Contacts	Trustee: Erica Gilmore Financial Manager: Eugene Hampton 700 2nd Avenue South, Suite 220 37210	email: erica.gilmore@nashville.gov email: eugene.hampton@nashville.gov Phone: 615-862-6330		

17 Trustee - At a Glance

Organizational Structure



Programs

Administration

Administration
Non-allocated Financial Transactions

17 Trustee - At a Glance

Budget Changes and Impact Highlights

Recommendation		Impact	
Tax Relief Division			
Additional Deputy- Tax Accounting Position	GSD	\$122,400 1.00 FTE	To provide funding for one full time Deputy- Tax Accounting Position that will help with the increased needs in the Tax Relief and Customer Service Divisions
Property Tax Collections			
Currency Deposit Service	GSD	10,000	To provide the Trustee's Office with the ability to deposit Property Tax on the same day as collected
Personnel Development			
Office Travel and Training	GSD	14,300	To promote innovation by learning the best practices from other leaders around the country to ensure better services for Metro Taxpayers
Non-allocated Financial Transactions			
Internal Service Charges*	GSD	74,000	Delivery of centrally provided services including information systems, fleet management, radio, and surplus property
Longevity	GSD	21,300	Reinstatement of longevity pay to support the retention of employees with a significant level of institutional knowledge and commitment
Pay Plan Allocation	GSD	23,200	Supports the hiring and retention of a qualified workforce
General Services District Total		\$265,200 1.00 FTE	
TOTAL		\$265,200 1.00 FTE	

* See Internal Service Charges section for details
GSD - General Services District