

48 Office of Internal Audit - At a Glance

Mission The Office of Internal Audit is an independent appraisal agency established to ensure and enhance the integrity, equality, accountability, effectiveness, and efficiency of service activities, and to pursue an atmosphere of honesty and mutual trust within the Metropolitan Nashville Government.

Budget Summary

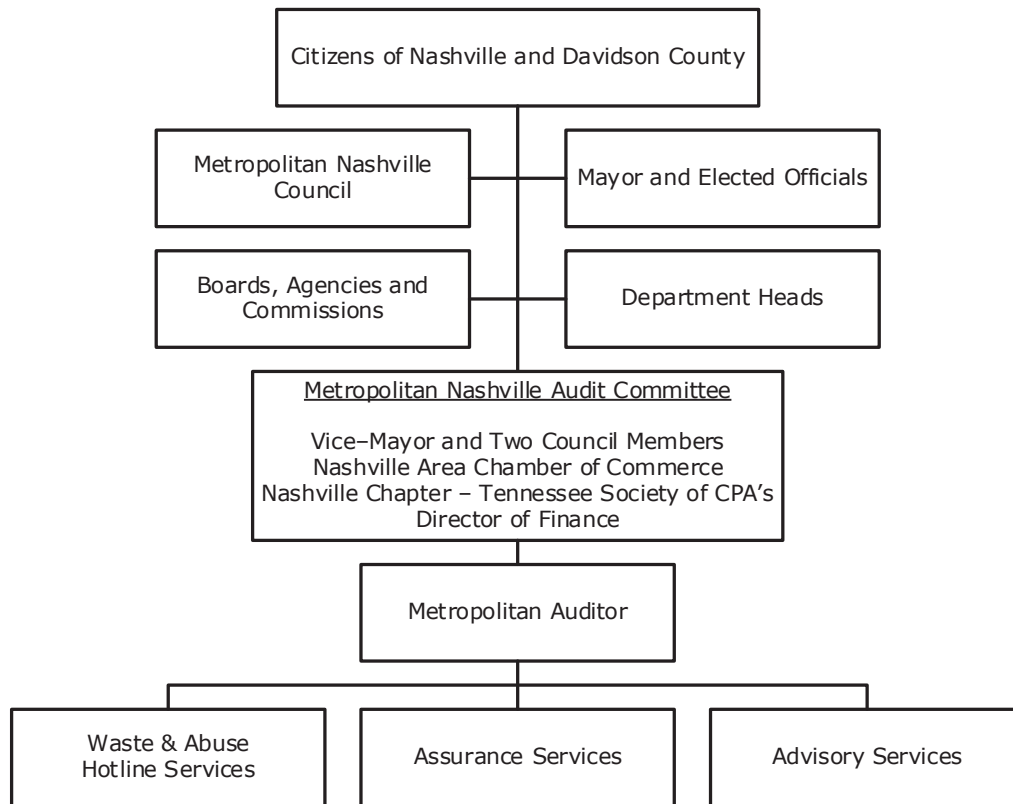
	<u>2019-20</u>	<u>2020-21</u>	<u>2021-22</u>
Expenditures and Transfers:			
GSD General Fund	\$ 1,574,900	\$ 1,567,300	\$ 1,633,200
Total Expenditures and Transfers	<u>\$ 1,574,900</u>	<u>\$ 1,567,300</u>	<u>\$ 1,633,200</u>
Revenues and Transfers:			
Program Revenue			
Charges, Commissions, and Fees	\$ 0	\$ 0	\$ 0
Other Governments and Agencies	0	0	0
Other Program Revenue	0	0	0
Total Program Revenue	\$ 0	\$ 0	\$ 0
Non-program Revenue			
Transfers From Other Funds and Units	\$ 0	\$ 0	\$ 0
Total Revenues and Transfers	<u>\$ 0</u>	<u>\$ 0</u>	<u>\$ 0</u>
Expenditures Per Capita	\$ 2.27	\$ 2.22	\$ 2.30

Positions Total Budgeted Positions 10 10 10

Contacts Director: Lauren Riley email: lauren.riley@nashville.gov
 404 James Robertson Parkway, Suite 190
 37219 Phone: 615-862-6110

48 Office of Internal Audit - At a Glance

Organizational Structure



Programs

Administrative

Non-allocated Financial Transactions

Business Integrity and Accountability

Advisory Services
 Audit Assurance Services
 Integrity Hotline and Innovation Suggestion Box

48 Office of Internal Audit - At a Glance

Budget Changes and Impact Highlights

Recommendation			Impact
Non-allocated Financial Transactions			
Longevity	GSD	\$3,800	Reinstatement of longevity pay to support the retention of employees with a significant level of institutional knowledge and commitment
Internal Service Charges*	GSD	7,800	Delivery of centrally provided services including information systems, fleet management, radio, and surplus property
Pay Plan Allocation	GSD	54,300	Supports the hiring and retention of a qualified workforce
General Services District Total		\$65,900	
TOTAL		\$65,900	

* See Internal Service Charges section for details
GSD - General Services District