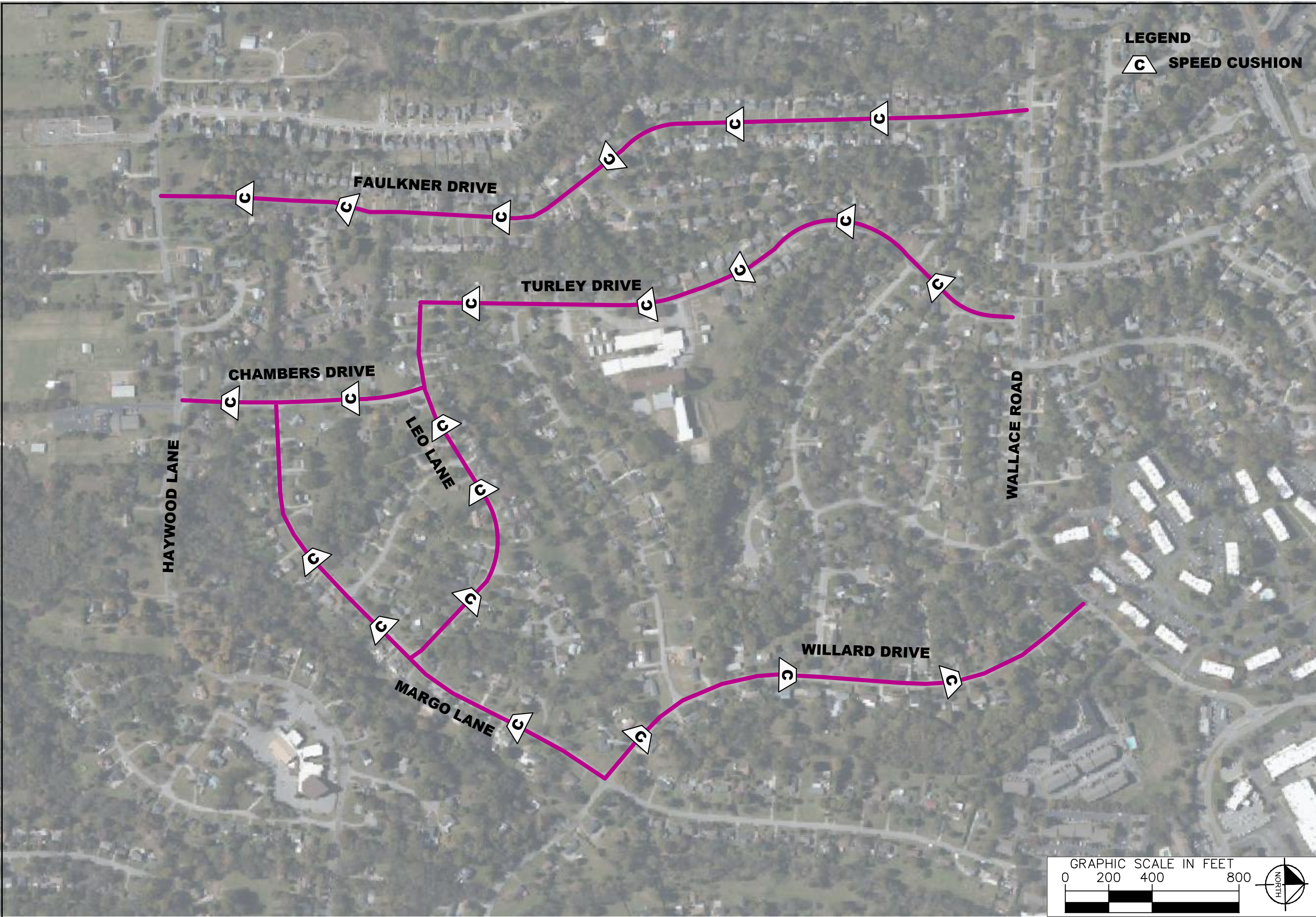


This document, together with the concepts and designs presented herein, is intended only for the specific purpose and client for which it was prepared. Reviewers of this document without written authorization and adaptation by Kimley-Horn and Associates, Inc. shall be without liability to Kimley-Horn and Associates, Inc.



LEGEND
C SPEED CUSHION

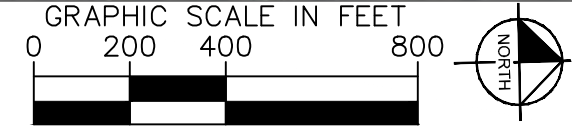


**HAYWOOD HEIGHTS
TRAFFIC CALMING**
NASHVILLE, TN

**DRAFT
PRELIMINARY
PLANS**
FOR REVIEW ONLY

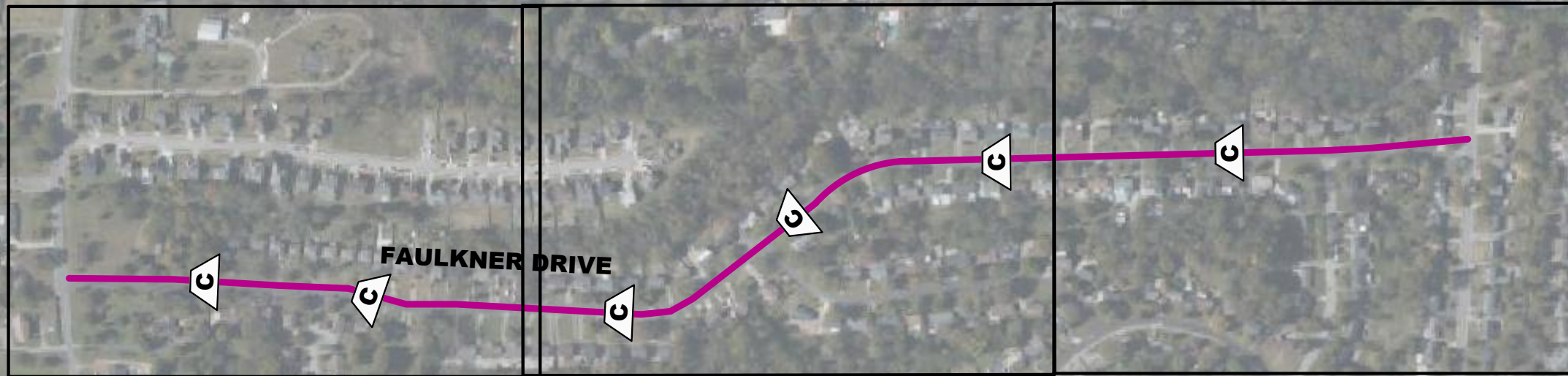
| NO. | REVISIONS | DATE | BY |
|-----|-----------|------|----|
| 1 | | | |
| 2 | | | |
| 3 | | | |
| 4 | | | |
| 5 | | | |
| 6 | | | |
| 7 | | | |
| 8 | | | |
| 9 | | | |
| 10 | | | |

DESIGNED BY: RBW
 DRAWN BY: E.J.W.
 CHECKED BY: NDOT
 DATE: 12/21/2021
 KIMLEY-HORN PROJECT NO. 11800005



CONCEPT PLAN
 SHEET NUMBER
01

This document, together with the concepts and designs presented herein, is intended only for the specific purpose and client for which it was prepared. Reuse of and improper reliance on this document without written authorization and adaptation by Kimley-Horn and Associates, Inc. shall be without liability to Kimley-Horn and Associates, Inc.



LEGEND
 **SPEED CUSHION**

SEE SHEET 6

SEE SHEET 7

SEE SHEET 8

TURLEY DRIVE

CHAMBERS DRIVE

LEO LANE

HAYWOOD LANE

WALLACE ROAD

MARGO LANE

WILLARD DRIVE



**HAYWOOD HEIGHTS
 TRAFFIC CALMING
 NASHVILLE, TN**

**DRAFT
 PRELIMINARY
 PLANS
 FOR REVIEW ONLY**

| NO. | REVISIONS | DATE | BY |
|-----|-----------|------|----|
| 1 | | | |
| 2 | | | |
| 3 | | | |
| 4 | | | |
| 5 | | | |
| 6 | | | |
| 7 | | | |
| 8 | | | |
| 9 | | | |
| 10 | | | |

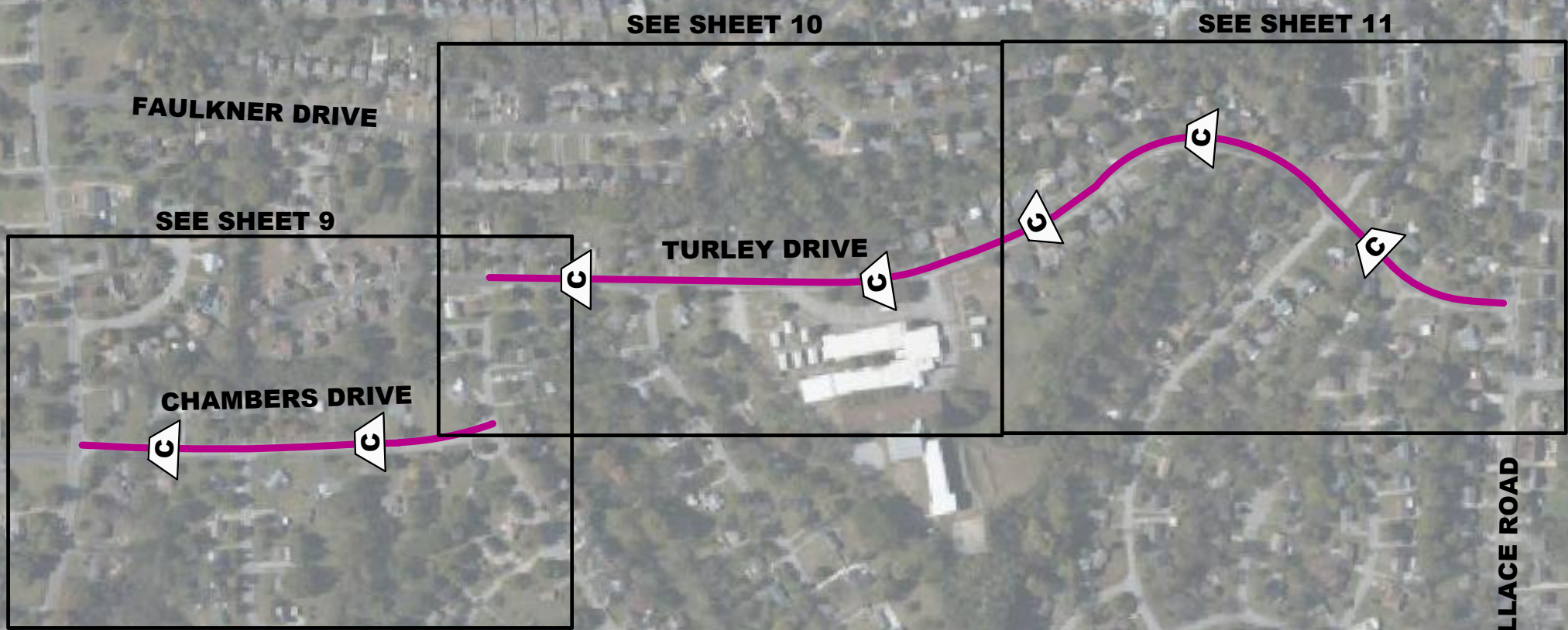
DESIGNED BY: RBW
 DRAWN BY: E.J.W.
 CHECKED BY: NDOT
 DATE: 12/21/2021
 KIMLEY-HORN PROJECT NO. 11800005



CONCEPT PLAN
 SHEET NUMBER
02

This document, together with the concepts and designs presented herein, is intended only for the specific purpose and client for which it was prepared. Reuse of and improper reliance on this document without written authorization and adaptation by Kimley-Horn and Associates, Inc. shall be without liability to Kimley-Horn and Associates, Inc.

LEGEND
 **SPEED CUSHION**

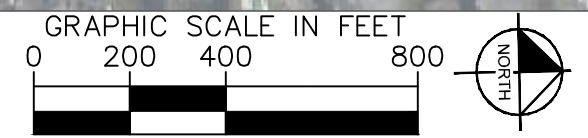


**HAYWOOD HEIGHTS
 TRAFFIC CALMING
 NASHVILLE, TN**

**DRAFT
 PRELIMINARY
 PLANS
 FOR REVIEW ONLY**

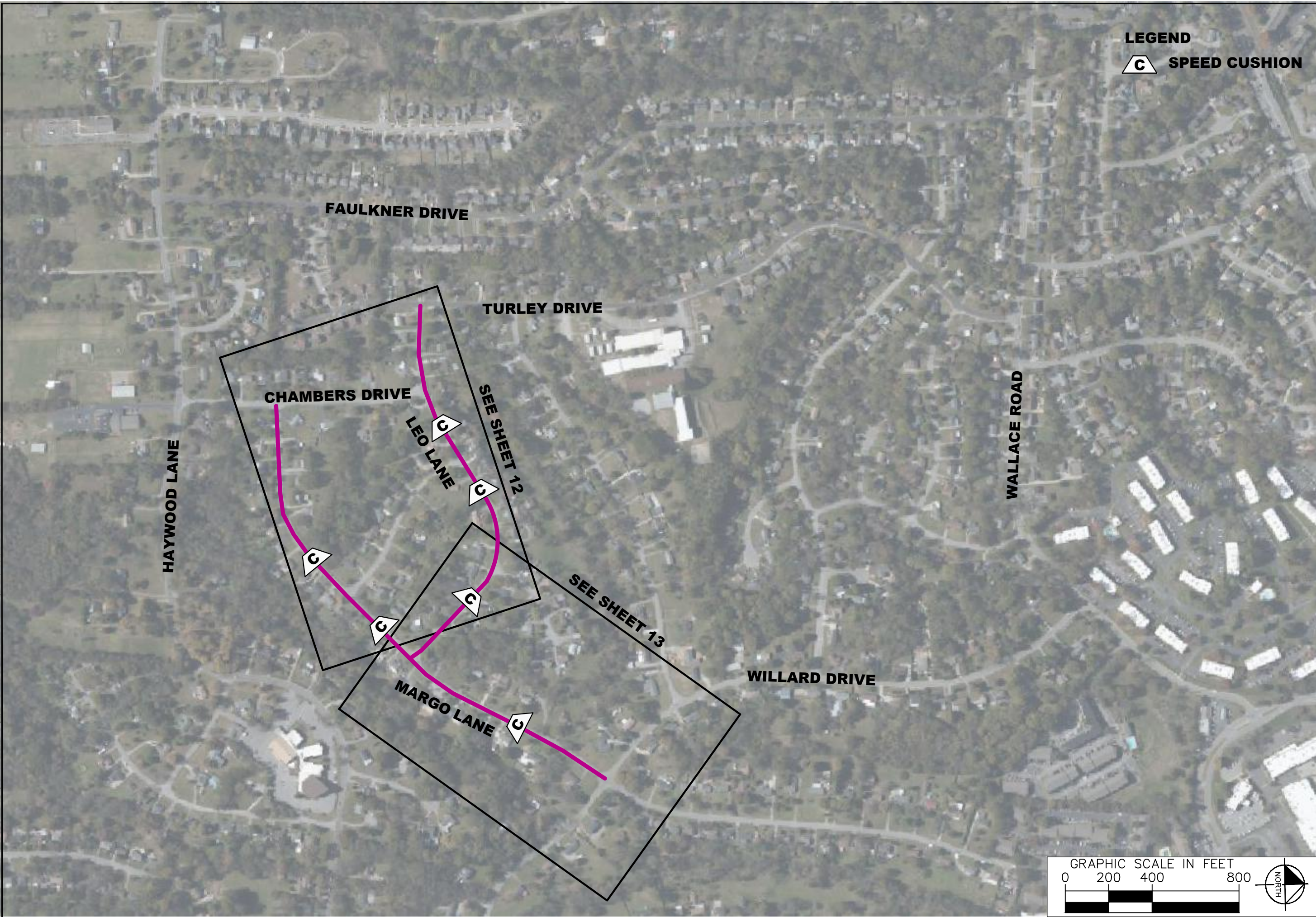
| NO. | DATE | BY | REVISIONS |
|-----|------|----|-----------|
| 1 | | | |
| 2 | | | |
| 3 | | | |
| 4 | | | |
| 5 | | | |
| 6 | | | |
| 7 | | | |
| 8 | | | |
| 9 | | | |
| 10 | | | |

DESIGNED BY: RBW
 DRAWN BY: E.J.W.
 CHECKED BY: NDOT
 DATE: 12/21/2021
 KIMLEY-HORN PROJECT NO. 11800005



CONCEPT PLAN
 SHEET NUMBER
03

This document, together with the concepts and designs presented herein, is intended only for the specific purpose and client for which it was prepared. Review of and proper reliance on this document without written authorization and adaptation by Kimley-Horn and Associates, Inc. shall be without liability to Kimley-Horn and Associates, Inc.



LEGEND
C SPEED CUSHION



**HAYWOOD HEIGHTS
TRAFFIC CALMING**
NASHVILLE, TN

**DRAFT
PRELIMINARY
PLANS**
FOR REVIEW ONLY

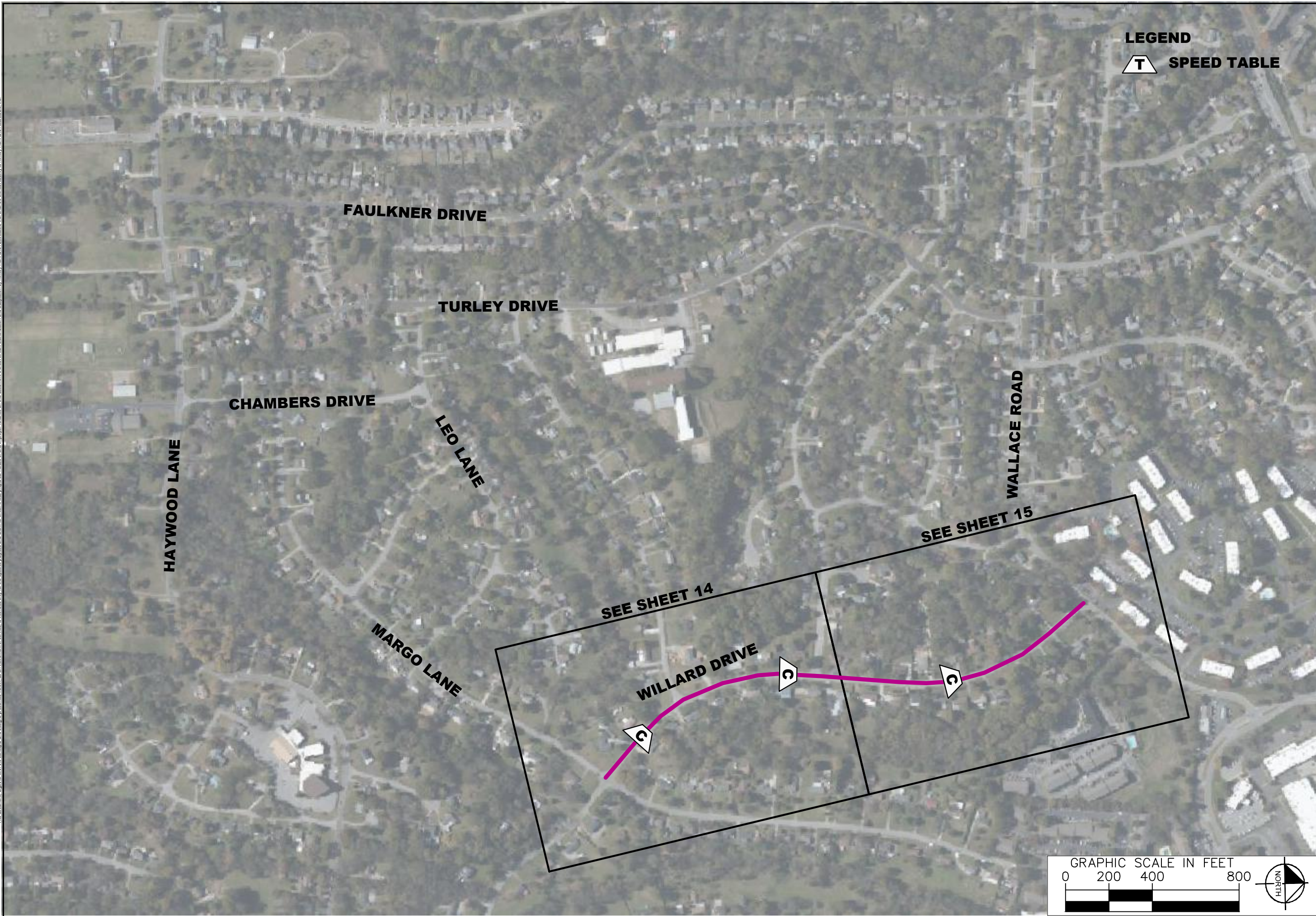
| NO. | REVISIONS | DATE | BY |
|-----|-----------|------|----|
| 1 | | | |
| 2 | | | |
| 3 | | | |
| 4 | | | |
| 5 | | | |
| 6 | | | |
| 7 | | | |
| 8 | | | |
| 9 | | | |
| 10 | | | |

DESIGNED BY: RBW
 DRAWN BY: E.J.W.
 CHECKED BY: NDOT
 DATE: 12/21/2021
 KIMLEY-HORN PROJECT NO. 11800005



CONCEPT PLAN
 SHEET NUMBER
04

This document, together with the concepts and designs presented herein, is intended only for the specific purpose and client for which it was prepared. Reuse of and improper reliance on this document without written authorization and adaptation by Kimley-Horn and Associates, Inc. shall be without liability to Kimley-Horn and Associates, Inc.



LEGEND
T SPEED TABLE



**HAYWOOD HEIGHTS
TRAFFIC CALMING**
NASHVILLE, TN

**DRAFT
PRELIMINARY
PLANS**
FOR REVIEW ONLY

| NO. | DATE | BY | REVISIONS |
|-----|------|----|-----------|
| 1 | | | |
| 2 | | | |
| 3 | | | |
| 4 | | | |
| 5 | | | |
| 6 | | | |
| 7 | | | |
| 8 | | | |
| 9 | | | |
| 10 | | | |

DESIGNED BY: RBW
 DRAWN BY: E.J.W.
 CHECKED BY: NDOT
 DATE: 12/21/2021
 KIMLEY-HORN PROJECT NO.
 11800005

CONCEPT PLAN
 SHEET NUMBER
05





**HAYWOOD HEIGHTS
TRAFFIC CALMING
NASHVILLE, TN**

**DRAFT
PRELIMINARY
PLANS
FOR REVIEW ONLY**

| NO. | DATE | BY | REVISIONS |
|-----|------|----|-----------|
| 1 | | | |
| 2 | | | |
| 3 | | | |
| 4 | | | |
| 5 | | | |
| 6 | | | |
| 7 | | | |
| 8 | | | |
| 9 | | | |
| 10 | | | |

| | |
|----------------------------------|------------|
| DESIGNED BY: | RBW |
| DRAWN BY: | EJW |
| CHECKED BY: | NDOT |
| DATE: | 12/21/2021 |
| KIMLEY-HORN PROJECT NO. 11800005 | |

CONCEPT PLAN
SHEET NUMBER
06

This document, together with the concepts and designs presented herein, is intended only for the specific purpose and client for which it was prepared. Reuse of and improper reliance on this document without written authorization and adaptation by Kimley-Horn and Associates, Inc. shall be without liability to Kimley-Horn and Associates, Inc.



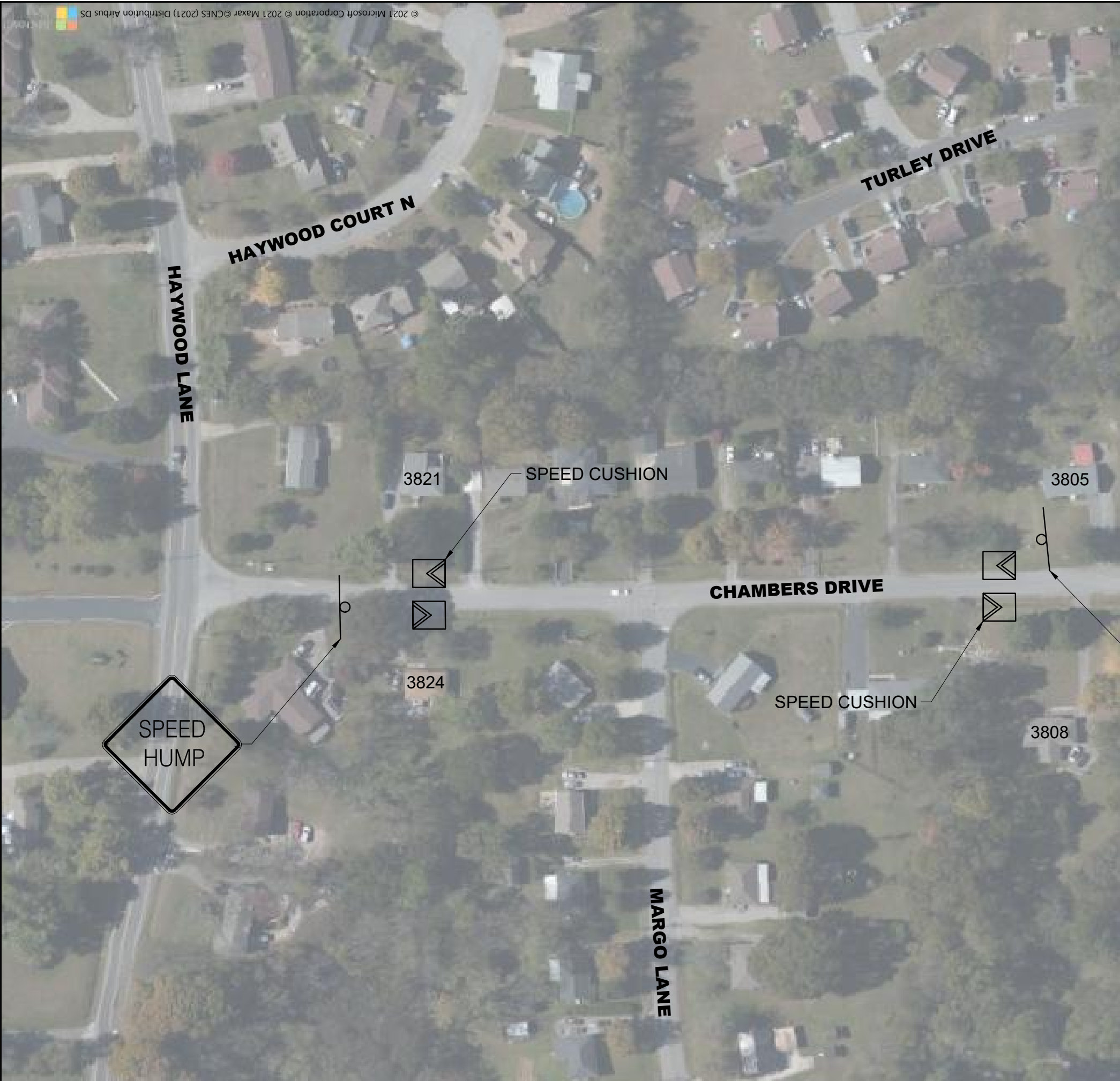
| NO. | DATE | BY | REVISIONS |
|-----|------|----|-----------|
| 1 | | | |
| 2 | | | |
| 3 | | | |
| 4 | | | |
| 5 | | | |
| 6 | | | |
| 7 | | | |
| 8 | | | |
| 9 | | | |
| 10 | | | |

| | |
|----------------------------------|------------|
| DESIGNED BY: | RBW |
| DRAWN BY: | EJW |
| CHECKED BY: | NDOT |
| DATE: | 12/21/2021 |
| KIMLEY-HORN PROJECT NO. 11800005 | |



This document, together with the concepts and designs presented herein, is intended only for the specific purpose and client for which it was prepared. Reuse of and improper reliance on this document without written authorization and adaptation by Kimley-Horn and Associates, Inc. shall be without liability to Kimley-Horn and Associates, Inc.

This document, together with the concepts and designs presented herein, is intended only for the specific purpose and client for which it was prepared. Reuse of and improper reliance on this document without written authorization and adaptation by Kimley-Horn and Associates, Inc. shall be without liability to Kimley-Horn and Associates, Inc.



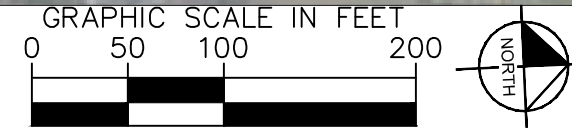
**HAYWOOD HEIGHTS
TRAFFIC CALMING
NASHVILLE, TN**

**DRAFT
PRELIMINARY
PLANS
FOR REVIEW ONLY**

| NO. | DATE | BY | REVISIONS |
|-----|------|----|-----------|
| 1 | | | |
| 2 | | | |
| 3 | | | |
| 4 | | | |
| 5 | | | |
| 6 | | | |
| 7 | | | |
| 8 | | | |
| 9 | | | |
| 10 | | | |

DESIGNED BY: RBW
 DRAWN BY: EJV
 CHECKED BY: NDOT
 DATE: 12/21/2021
 KIMLEY-HORN PROJECT NO. 11800005

CONCEPT PLAN
 SHEET NUMBER
09



This document, together with the concepts and designs presented herein, is intended only for the specific purpose and client for which it was prepared. Reuse of and improper reliance on this document without written authorization and adaptation by Kimley-Horn and Associates, Inc. shall be without liability to Kimley-Horn and Associates, Inc.



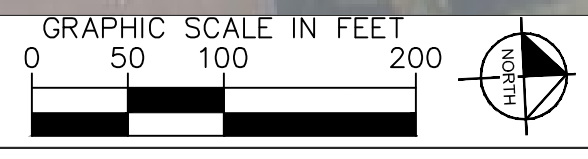
**HAYWOOD HEIGHTS
TRAFFIC CALMING
NASHVILLE, TN**

**DRAFT
PRELIMINARY
PLANS
FOR REVIEW ONLY**

| NO. | DATE | BY | REVISIONS |
|-----|------|----|-----------|
| 1 | | | |
| 2 | | | |
| 3 | | | |
| 4 | | | |
| 5 | | | |
| 6 | | | |
| 7 | | | |
| 8 | | | |
| 9 | | | |
| 10 | | | |

DESIGNED BY: RBW
 DRAWN BY: EJV
 CHECKED BY: NDOT
 DATE: 12/21/2021
 KIMLEY-HORN PROJECT NO. 11800005

CONCEPT PLAN
 SHEET NUMBER
10



This document, together with the concepts and designs presented herein, is intended only for the specific purpose and client for which it was prepared. Reuse of and improper reliance on this document without written authorization and adaptation by Kimley-Horn and Associates, Inc. shall be without liability to Kimley-Horn and Associates, Inc.



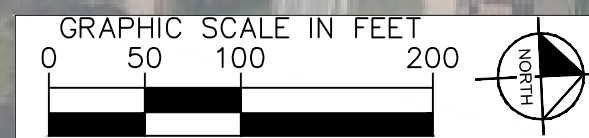
**HAYWOOD HEIGHTS
TRAFFIC CALMING
NASHVILLE, TN**

**DRAFT
PRELIMINARY
PLANS
FOR REVIEW ONLY**

| NO. | DATE | BY | REVISIONS |
|-----|------|----|-----------|
| 1 | | | |
| 2 | | | |
| 3 | | | |
| 4 | | | |
| 5 | | | |
| 6 | | | |
| 7 | | | |
| 8 | | | |
| 9 | | | |
| 10 | | | |

DESIGNED BY: _____
 DRAWN BY: E.J.W.
 CHECKED BY: NDOT
 DATE: 12/21/2021
 KIMLEY-HORN PROJECT NO. 11800005

CONCEPT PLAN
 SHEET NUMBER
11



This document, together with the concepts and designs presented herein, is intended only for the specific purpose and client for which it was prepared. Reuse of and improper reliance on this document without written authorization and adaptation by Kimley-Horn and Associates, Inc. shall be without liability to Kimley-Horn and Associates, Inc.



**HAYWOOD HEIGHTS
TRAFFIC CALMING**
NASHVILLE, TN

**DRAFT
PRELIMINARY
PLANS**
FOR REVIEW ONLY

| NO. | DATE | BY | REVISIONS |
|-----|------|----|-----------|
| 1 | | | |
| 2 | | | |
| 3 | | | |
| 4 | | | |
| 5 | | | |
| 6 | | | |
| 7 | | | |
| 8 | | | |
| 9 | | | |
| 10 | | | |

| | |
|----------------------------------|------------|
| DESIGNED BY: | REVIEW |
| DRAWN BY: | EJW |
| CHECKED BY: | NDOT |
| DATE: | 12/21/2021 |
| KIMLEY-HORN PROJECT NO. 11800005 | |
| CONCEPT PLAN | |
| SHEET NUMBER | |
| 12 | |



© 2021 Microsoft Corpo

This document, together with the concepts and designs presented herein, is intended only for the specific purpose and client for which it was prepared. Reuse of and improper reliance on this document without written authorization and adaptation by Kimley-Horn and Associates, Inc. shall be without liability to Kimley-Horn and Associates, Inc.

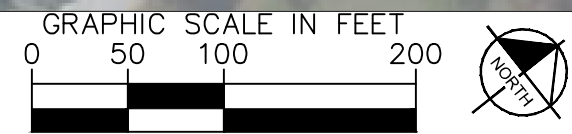


**HAYWOOD HEIGHTS
TRAFFIC CALMING
NASHVILLE, TN**

**DRAFT
PRELIMINARY
PLANS
FOR REVIEW ONLY**

| NO. | DATE | BY | REVISIONS |
|-----|------|----|-----------|
| 1 | | | |
| 2 | | | |
| 3 | | | |
| 4 | | | |
| 5 | | | |
| 6 | | | |
| 7 | | | |
| 8 | | | |
| 9 | | | |
| 10 | | | |

DESIGNED BY: RBW
 DRAWN BY: E.J.W.
 CHECKED BY: NDOT
 DATE: 12/21/2021
 KIMLEY-HORN PROJECT NO. 11800005



This document, together with the concepts and designs presented herein, is intended only for the specific purpose and client for which it was prepared. Reuse of and improper reliance on this document without written authorization and adaptation by Kimley-Horn and Associates, Inc. shall be without liability to Kimley-Horn and Associates, Inc.



HAYWOOD HEIGHTS
TRAFFIC CALMING
NASHVILLE, TN

DRAFT
PRELIMINARY
PLANS
FOR REVIEW ONLY

| NO. | DATE | BY | REVISIONS |
|-----|------|----|-----------|
| 1 | | | |
| 2 | | | |
| 3 | | | |
| 4 | | | |
| 5 | | | |
| 6 | | | |
| 7 | | | |
| 8 | | | |
| 9 | | | |
| 10 | | | |

DESIGNED BY: RBW
 DRAWN BY: E.J.W.
 CHECKED BY: NDOT
 DATE: 12/21/2021
 KIMLEY-HORN PROJECT NO. 11800005

CONCEPT PLAN
 SHEET NUMBER
14



This document, together with the concepts and designs presented herein, is intended only for the specific purpose and client for which it was prepared. Reuse of and improper reliance on this document without written authorization and adaptation by Kimley-Horn and Associates, Inc. shall be without liability to Kimley-Horn and Associates, Inc.



**HAYWOOD HEIGHTS
TRAFFIC CALMING
NASHVILLE, TN**

**DRAFT
PRELIMINARY
PLANS
FOR REVIEW ONLY**

| NO. | DATE | BY | REVISIONS |
|-----|------|----|-----------|
| 1 | | | |
| 2 | | | |
| 3 | | | |
| 4 | | | |
| 5 | | | |
| 6 | | | |
| 7 | | | |
| 8 | | | |
| 9 | | | |
| 10 | | | |

DESIGNED BY: RBW
 DRAWN BY: E.J.W.
 CHECKED BY: NDOT
 DATE: 12/21/2021
 KIMLEY-HORN PROJECT NO. 11800005

CONCEPT PLAN
 SHEET NUMBER
15

