

Starting soon....

**PERKINS —
EASTMAN**



April 11, 2022

imagine **eastbank**

Neighborhood Advisory Committee
Meeting #5



Neighborhood Advisory Committee Members

- Nicole McKnight, Cayce PI Residents Association
- Chris VanLoon, Rosebank Neighbors
- Rebecca Ratz, Friends of Shelby Park
- Pastor Sabrina, First Church of the Nazarene
- Marsha Edwards, Martha O'Bryan Center
- Jason Garrett, Shelby Hills Neighborhood Association
- Leslie Boone, Maxwell Heights Neighborhood Association
- Ingrid Campbell, McFerrin Park Neighborhood Association
- Justin Jackson, Cleveland Park Neighborhood Association
- Ann Butterworth, Downtown Residents Association
- Matt Warren, Cross Point Church
- Kim Demetrio, Catholic Charities
- Jarrett Strickland, Friends of Douglass Park
- Kelly Collier, Historic Edgefield Neighborhood Association
- District 6, Councilmember Withers
- District 5, Councilmember Parker

Role of the Neighborhood Advisory Committee

- Represent your community's goals and consider what is best for the East Bank and for your neighbors
- Help guide the development of the vision for the East Bank
- Serve as a sounding board for ideas
- Participate in the public meetings and events held during the study
- Help promote public participation by encouraging your neighbors to attend public meetings, take surveys etc.

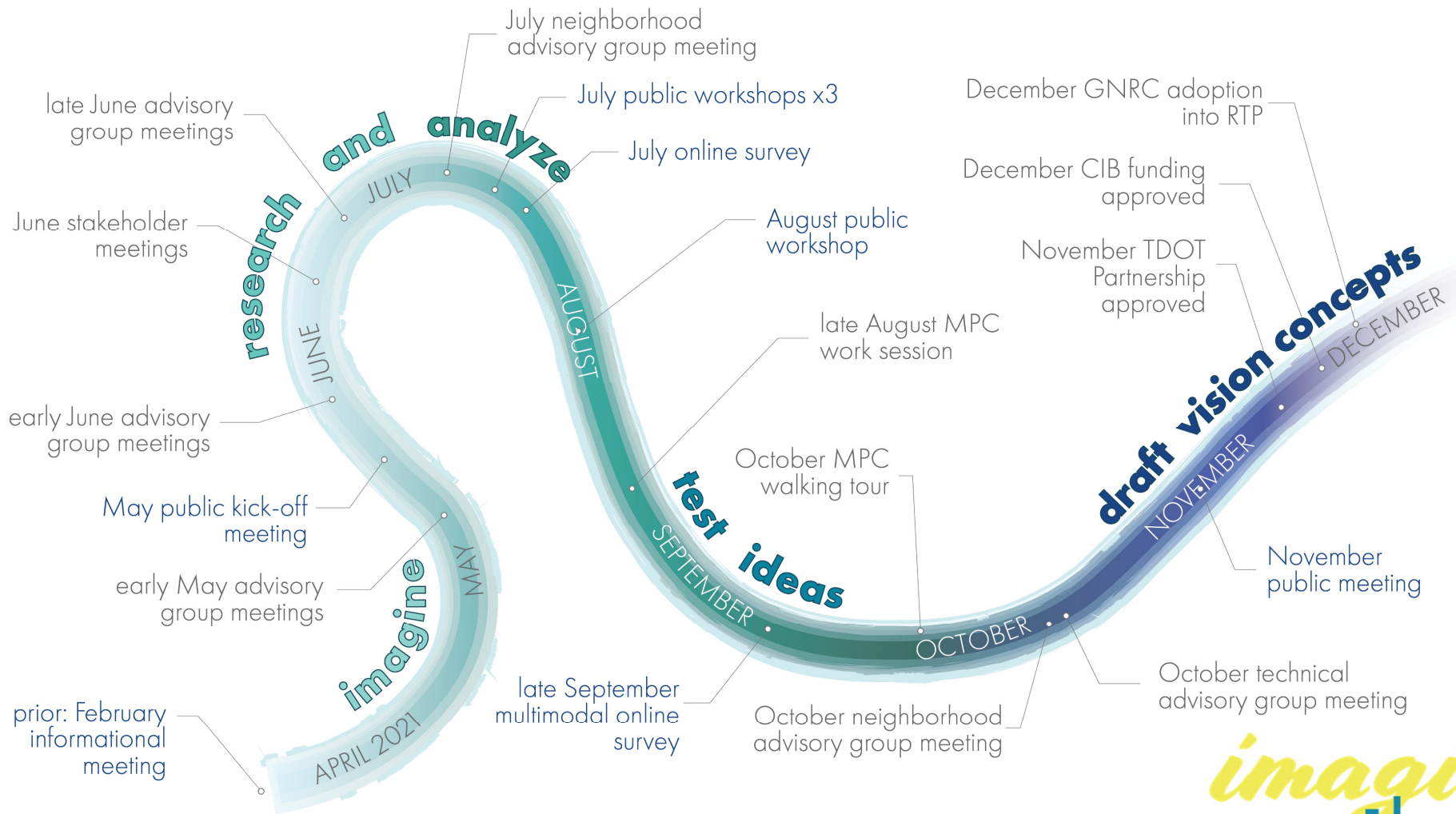
A detailed historical aerial illustration of a city, likely Eastbank, showing a dense urban grid, a river, and industrial areas. The 'imagine eastbank' logo is overlaid in the top right corner.

imagine
eastbank

agenda

- Study Update
- Vision Plan Preview
- Outreach Discussion

PHASE ONE: establish a vision and define infrastructure needed to direct future growth



DISJOINTED STREET GRID

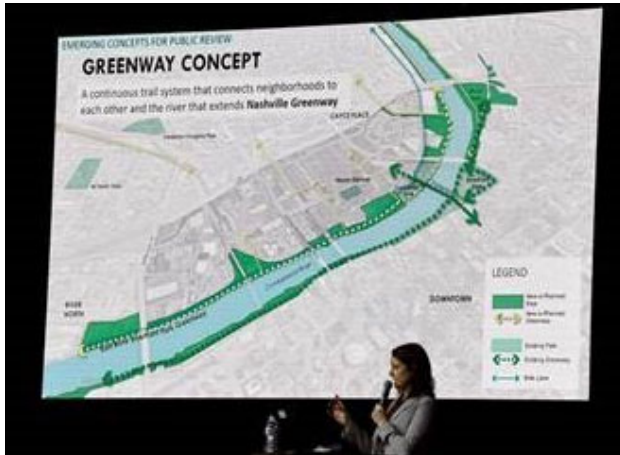
CURRENT N-S CONNECTION IS DISJOINTED BY THE E-W BARRIERS



Pursuing a Multimodal Boulevard



November 30th Hybrid Community Meeting



Participation

70+ in person

50+ online

260+ completed survey



imagine eastbank

SUMMARY OF FEEDBACK ON PUBLIC REVIEW CONCEPTS



DECEMBER 2021 METRO NASHVILLE PLANNING DEPARTMENT
eastbankstudy.nashville.gov

PUBLIC REVIEW CONCEPTS



Public Open Space Concept



Multimodal Boulevard Concept



Cross River Connections Concept



Greenway Network Concept



Residential Street Concept



Riverfront Park Concept



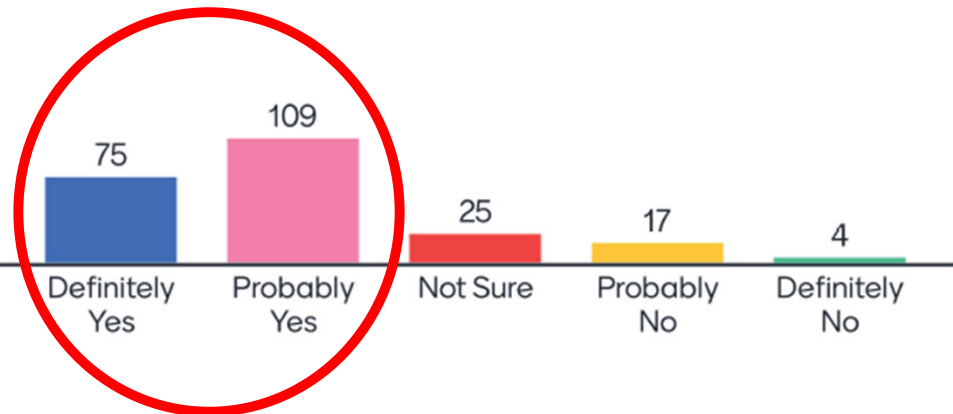
Bikeway Concept



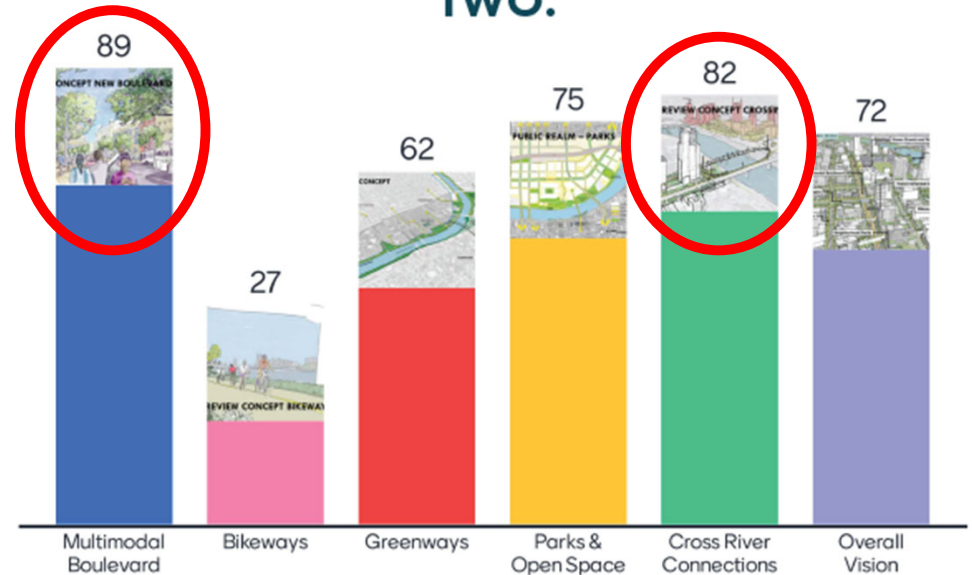
Overall Vision Concept

November 30th Hybrid Community Meeting

DO YOU FEEL THAT THE CONCEPTS SHOWN TONIGHT ARE ON THE RIGHT TRACK?



OF THE CONCEPTS SHOWN TONIGHT, WHICH ONES ARE THE MOST EXCITING TO YOU? SELECT TWO.



CONTENTS

FOREWORD

1 INTRO TO THE EAST BANK

- 1.0 Intro
- 1.1 Urban Framework: Forces Shaping the East Bank
- 1.2 Existing Conditions: On the Ground
- 1.3 Current Policy & Zoning

2 PRESSURES & OPPORTUNITIES

- 2.0 Intro
- 2.1 Pressure: Economic & Market
- 2.2 Opportunity: Neighborhood Building
- 2.3 Pressure: Circulation & Flows
- 2.4 Opportunity: Improved Transportation & Mobility
- 2.5 Pressure: Flooding & Environmental Resiliency
- 2.6 Opportunity: Return to the River

3 PUBLIC VISIONING

- 3.0 Intro
- 3.1 Planning Strategy
- 3.2 Engagement
- 3.3 Vision Themes

VISION PLAN PREVIEW

4 CONCEPTS & CATALYSTS

- 4.0 Intro
- 4.1 Neighborhoods for Nashville
 - Catalyst: Four Vibrant, Walkable Districts
- 4.2 Safe & Simple Connections
 - Catalyst: Multimodal Boulevard
- 4.3 Equity & Affordability
 - Catalyst: Diverse Housing Opportunities
- 4.4 Room for the River
 - Catalyst: Resilient Riverfront

5 RECOMMENDATIONS

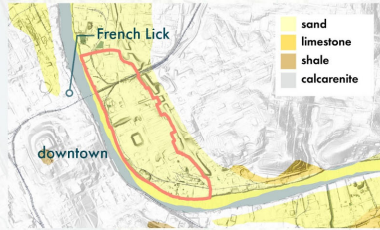
- 5.0 Intro
- 5.1 Neighborhoods for Nashville
- 5.2 Safe & Simple Connections
- 5.3 Equity & Affordability
- 5.4 Room for the River

6 APPENDIX

1.1 URBAN FRAMEWORK: BEGINNINGS

PREHUMAN HISTORY: RIVER & ROCK FORMATION

- » The channel of the Cumberland River is formed by water flowing from the Appalachian highlands, west and down towards the Mississippi River. As it meanders, the river cuts away at the limestone on its outer banks forming bluffs & deposits sand on its inner banks, creating flood plains.



Geologic map depicting the sandy sedimentary soils that underlie the East Bank & the calcarenite rock that underlies the western side of the river.

URBAN FRAMEWORK KEY

- natural forces
- human forces
- political forces

1800S : EXPANSION & INFRASTRUCTURE INVESTMENT SOLIDIFY THE DUAL IDENTITIES OF THE TWIN BANKS OF THE CUMBERLAND RIVER AT NASHVILLE.

- » Federal investment in infrastructure, such as locks & dams, allowed year-round navigation of the Cumberland River & enabled Nashville to grow as a commercial & industrial port.



This 1880s aerial illustrates the industry that comprised the East Bank at this time (lower) & barge traffic on the Cumberland.

400-200 million years ago, fossils deposited into a warm, shallow sea transform into the limestone substrate of today's Cumberland Basin.

1779, British pioneers, led by James Robertson and John Donelson, establish Ft. Nashborough at French Lick.

1832, Congress allocates \$30,000 to remove bars & snags on the Cumberland to improve navigability, enabling year-round barge traffic.

1886, the Woodland Street Bridge opened.

1600s, French traders established a trading post in an abandoned Shawnee Fort at a mineral springs on the western bank of the Cumberland River, near the site of today's Bicentennial Mall.

1823, the 1st bridge was built over the river, connecting the east side of the river to Nashville, enabling suburban expansion.

1869, Edgefield is established as an independent city. In 1880, it was incorporated into the city of Nashville.

In 1888, USACE created a district office at Nashville; made improvements to the Cumberland to improve navigability with locks & dams

PRE-EUROPEAN COLONIZATION

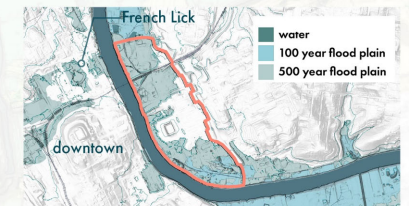
- » Buffalo, birds, & game animals reliably migrate to a mineral springs on the western bank of the Cumberland River.
- » The Shawnee establish a fort at the springs for hunting & trading.



1700s map highlighting the French Lick & original Nashville settlement on the west bank of the river.

1700S : TOPOGRAPHY & COMMERCE BEGET DEVELOPMENT ON THE WEST BANK

- » The west bank, with its high bluff, protective views & river proximity make it an ideal location for pioneer settlement.
- » Though inappropriate for habitation, the flood-prone, sandy land on the east side of the river is ideal for industries such as logging that need immediate access to the river.



Hydrology map showing that most of the East Bank sits within the 500 year flood plain.

2

PRESSURES & OPPORTUNITIES

WITH EVERY PRESSURE COMES OPPORTUNITY. THIS SECTION SUMMARIZES THE PRESSURES AND OPPORTUNITIES FACING THE EAST BANK TODAY.





“We have an opportunity to elevate the Cumberland River to be one of Nashville’s most popular amenities for the benefit of our entire community. That calls for a careful, community-driven approach to affirmative placemaking, as we engage residents and property owners at every step.”

Mayor John Cooper, on the East Bank visioning process

PART 3: PUBLIC VISIONING PROCESS

- 3.1 Planning Strategy
- 3.2 Engagement
- 3.3 Vision Themes

The Imagine East Bank Vision Study represents a year-long effort to engage Nashvillians and gather public feedback. From February 2021 to February 2022, Metro Planning hosted over 160 meetings to discuss potential changes. These dialogues helped shape infrastructure and design recommendations for an evolving East Bank.

Community engagement began in earnest at the virtual information meeting on February 4, 2021. This meeting introduced the public to the scope of the study. Over the next several months, several other types of engagement opportunities were provided in order to gather feedback from a wide range of stakeholders. Activities included public meetings and workshops, stakeholder collaboration, presentations to nonprofits and neighborhood groups, surveys, and community conversations.

key takeaways

Itae net unt ut ratum res iliquam inis ex exerpid etuscid minciatios moluptatem a vendae doles velendis in nit hiciunt ullam laccumq uassim rerferis mint, si omnis imin restiis adisitas venimin cimilliae etur accustiae estem. Nemqui qui totata nulparc hiliquaero dolecum rerum veres voluptatur, nim ut que east dolenda nditate niminis re, odis ut quias sim intias equibus dolestiores et auda dolupti onsequi ssecto

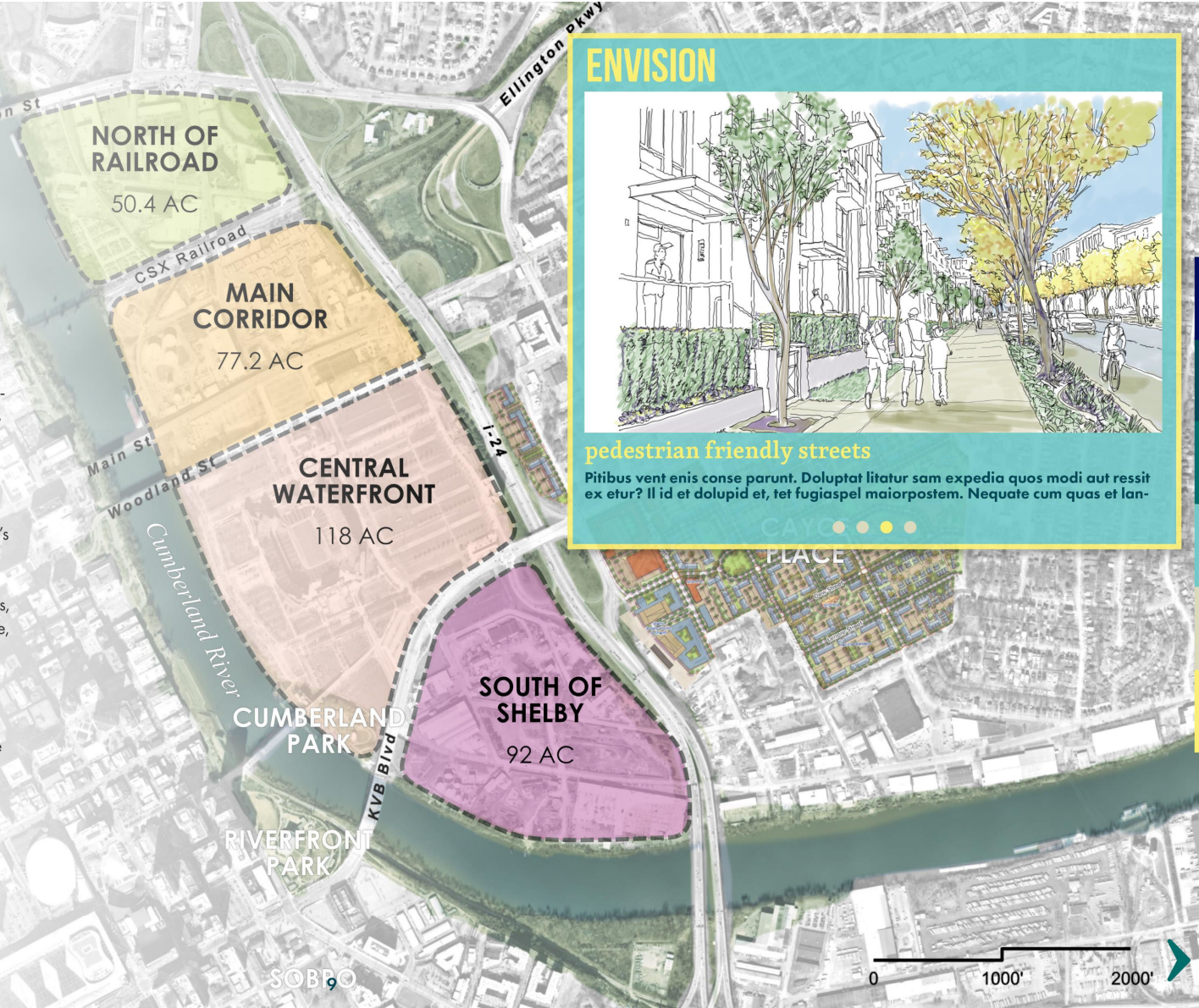
FOUR WALKABLE, MIXED-USE DISTRICTS

an opportunity for human-centric & place-based neighborhoods

The existing infrastructure running through the east bank naturally organizes the study area into four districts: North of Railroad, which is contiguous to River North and Oracle, and across from Germantown; Main-Woodland Corridor, which is related to new development east of I-24; Central Waterfront, which is directly opposite of downtown Nashville and presently more visitor-oriented due to Nissan Stadium; and South of Shelby, which is contiguous to Cayce Place and related to the new Wharf Park (it's also topographically suited for river access).

Each district is naturally characterized by its own opportunities, constraints, and land use patterns. Thus, all four districts have potential to be walkable, mixed-use neighborhoods with distinct characters and placemaking opportunities. Each district also has unique edge conditions along the Cumberland River, all of which can facilitate public access.

Due to their adjacencies along the east bank, it is possible to traverse one district in order to access another—as a pedestrian or cyclist—in approximately 5 minutes. The broader district connections described in the first paragraph will influence their respective future uses and development



ENVISION



pedestrian friendly streets

Pitibus vent enis conse parunt. Doluptat litatur sam expedia quos modi aut ressit ex etur? Il id et dolupid et, tet fugiaspel maiorpostem. Nequate cum quas et lan-



PLACE



Vision Plan Rollout Ideas from Committee

Consider appropriate channels to get Vision Plan to audience AND channels to get feedback

- In-Person Reach:
 - Door to door with flyer
 - Use street captains
 - Posting info at rec centers, libraries etc.
- Digital Reach:
 - Sponsored digital posts
 - Social Media: NextDoor, Facebook, etc.
 - Text messages and emails
 - Survey
- Look to the Redistricting Plan feedback for level of depth and extensiveness
- Engage area Faith community – Email with updates, events, etc., Potential presentation to Emmaus community

Federal Grant Funding Opportunities

For planning and feasibility related to:

- Multimodal transportation
- Sustainability and resiliency
- Environmental cleanup

Next Steps

- Draft Vision Plan released for public review: tentatively May-June
- Vision Plan presented to Metro Planning Commission: tentatively June- July
- Updates at eastbankstudy.nashville.gov