

5776 Lickton Pike Culvert Replacement

Existing Conditions

Description:

The existing culvert consists of a 25' long 18" CMP. There are areas of pavement settlement adjacent to the culvert inlet and outlet. The corrugated metal pipe has areas of 100% section loss, and the pipe has collapsed under the road. Additionally, the pipe has been crushed at the inlet.

Spans: 1

Length: 25'

Width: 18"

Rise: 18"

Reasons for replacement:

- ✓ Pavement Settlement
- ✓ 100% Section Loss
- ✓ Crushed Pipe Inlet
- ✓ Collapsed CMP
- ✓ Water Main Relocation



Crushed Pipe Inlet



Section Loss & Corrosion



Roadway Settlement

5776 Lickton Pike Culvert Replacement

Proposed Conditions

Description:

The proposed culvert construction will include an 18" reinforced concrete pipe, reinforced concrete headwalls, roadway reconstruction, and site restoration to ensure proper functionality. Due to a 12" Water Main conflict, the first two weeks of construction will be dedicated to the vertical adjustment of the Water Main. Additionally, due to the depth of excavation, the narrow travel lanes, and maintaining traffic through the construction, the project duration will be approximately 6 weeks.

Spans: 1

Length: 42'

Width: 18"

Rise: 18"

Opinion of Probable Cost: \$100,000

Anticipated Construction Duration: 6 Weeks

Anticipated Schedule for Construction:

July 6th through August 19th

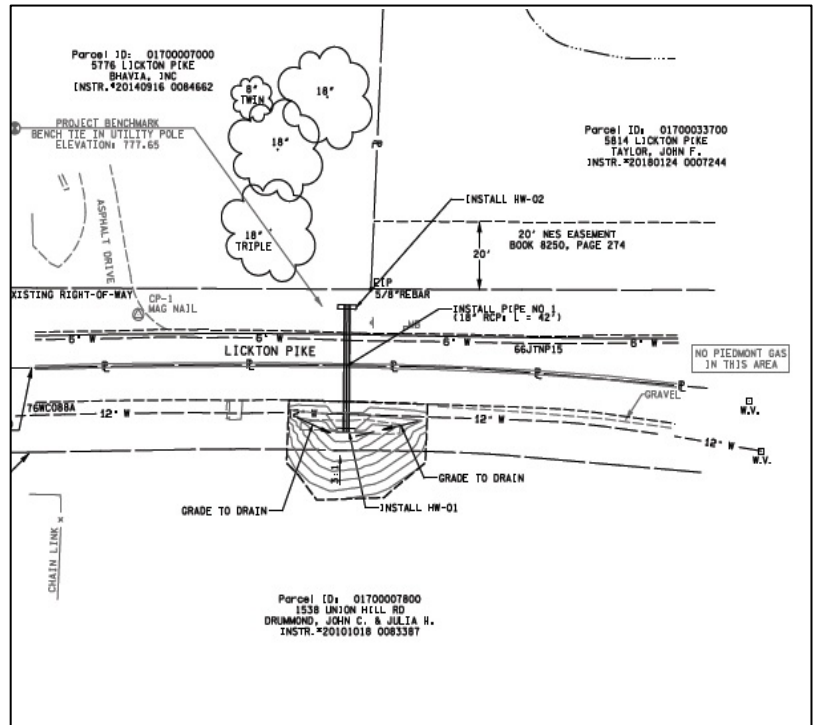
Intermittent Lane Closures:

July 6th through August 19th

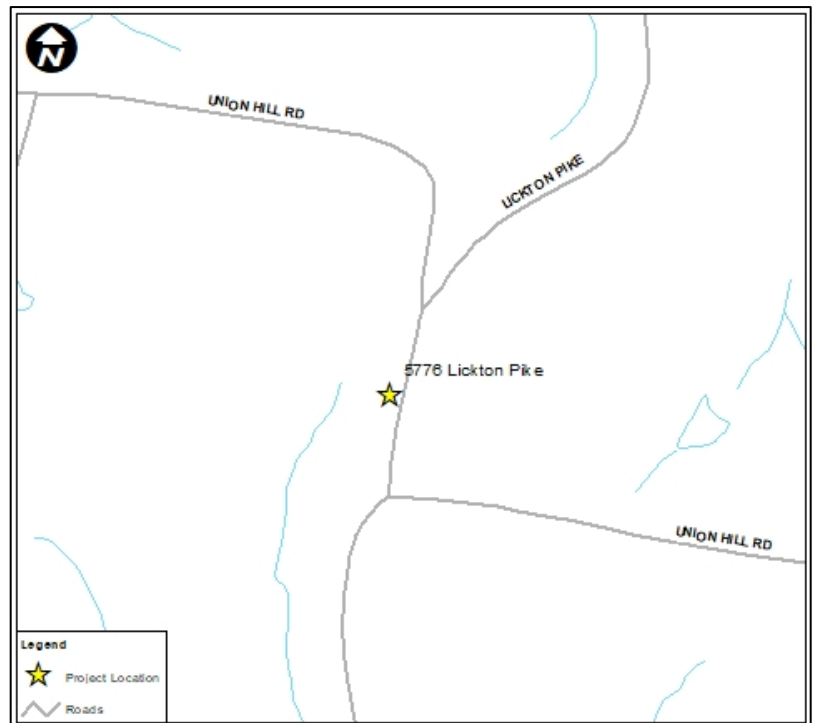
Project Status: Ready for construction

Construction Challenges:

- ✓ Waterline Relocation
- ✓ Coordination Between Utilities and the NDOT Annual Contractor
- ✓ Depth of Excavation



Project Plan View



Vicinity Map