

# 2064 Shaw Road Culvert Replacement

## Existing Conditions

### Description:

The culvert inlet is located approximately 40' east of the feature address, 2064 Shaw Road. The existing culvert consists of a 36' long 30" CMP and a stone masonry headwall at the inlet and no headwall at the outlet. The pavement over the culvert area shows heavy scaling, various cracks that typically measure 1/8" wide, and areas of pavement settlement. The corrugated metal pipe shows heavy corrosion at the bottom half of the pipe. The pipe shows a significant misalignment of the structure due to an area, located approximately 8' from the outlet end that shows the pipe broken off/separated. The pipe also shows sediment buildup measuring up to 8" deep, and a partial pipe collapse.

**Spans:** 1

**Length:** 36'

**Width:** 30"

**Rise:** 30"

### Reasons for replacement:

- ✓ 100% Section Loss
- ✓ Roadway Settlement
- ✓ Collapsed CMP



**Embankment Destabilization**



**Seam Separation & Pipe Collapse**



**Roadway Settlement**

# 2064 Shaw Road Culvert Replacement

## Proposed Conditions

### Description:

The proposed culvert construction will include the installation of a 38"x24" reinforced concrete pipe, reinforced concrete headwalls, roadway reconstruction, and site restoration to ensure proper functionality.

**Spans:** 1

**Length:** 36'

**Width:** 38"

**Rise:** 24"

**Opinion of Probable Cost:** \$75,000

**Anticipated Construction Duration:** 3 Weeks

**Anticipated Schedule for Construction:**

July 28<sup>th</sup> through August 18<sup>th</sup>

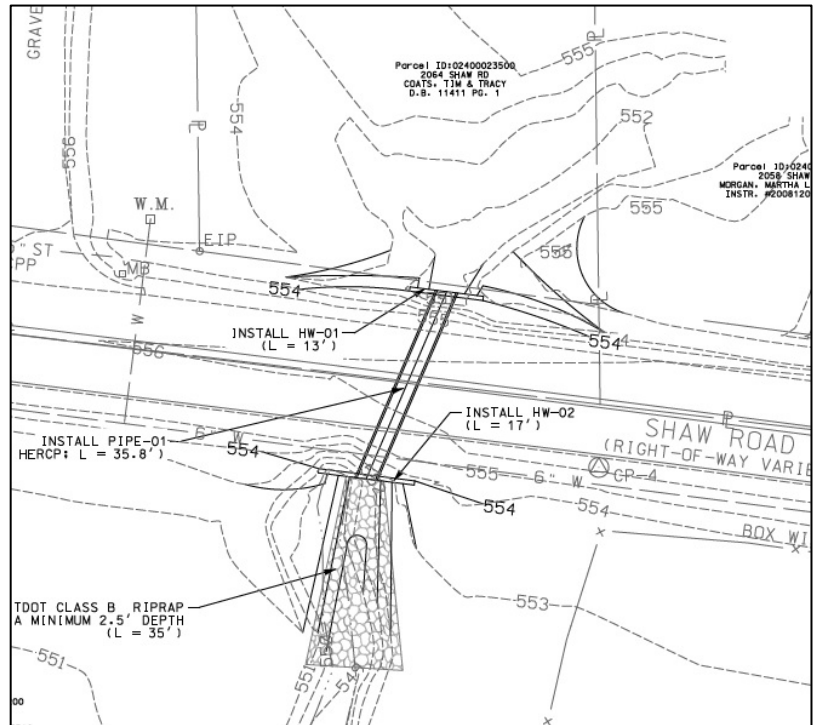
**Intermittent Lane Closures:**

July 28<sup>th</sup> through August 18<sup>th</sup>

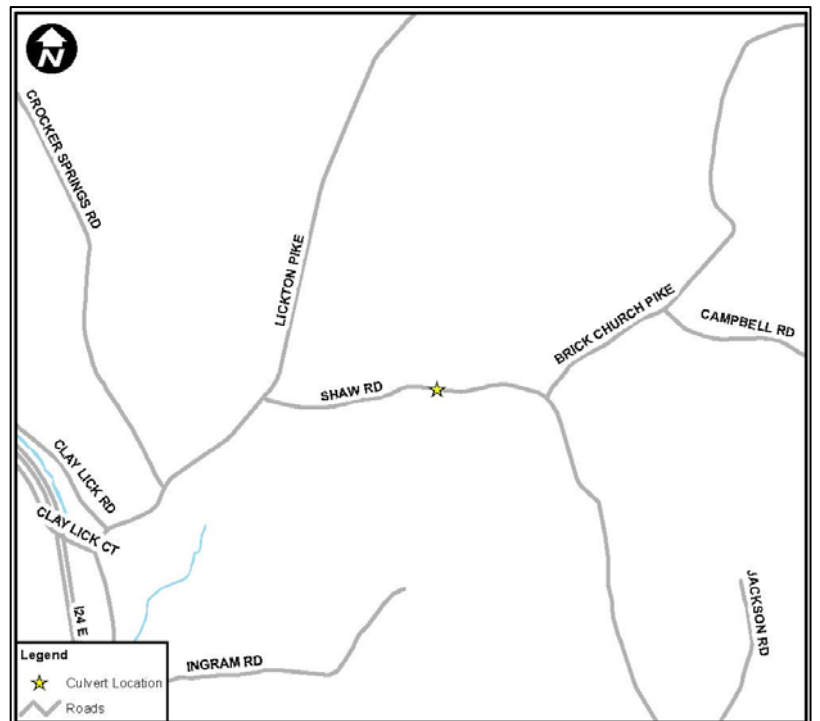
**Project Status:** Ready for construction

**Construction Challenges:**

- ✓ Coordination Between Utilities and the NDOT Annual Contractor
- ✓ Depth of Excavation



**Project Plan View**



**Vicinity Map**