

# 232 W Marthona Road Culvert Replacement

## Existing Conditions

### Description:

The culvert structure consists of a 37' long 49"x33" CMP culvert located approximately 20' south of the feature address, 232 West Marthona Road. There is an area of roadway failure near the inlet that has since been mitigated with the installation of a steel roadway plate. The corrugated metal pipe shows areas of corrosion with 100% section loss. Additionally, there is an area of seam separation with roadway backfill infiltration at the location of roadway failure. The inlet and outlet headwalls are beginning to fail with areas of missing stone and mortar loss.

**Spans:** 1

**Length:** 37'

**Width:** 49"

**Rise:** 33"

### Reasons for Rehabilitation:

- ✓ Roadway Failure w/ Steel Road Plate
- ✓ Pipe Seam Separation
- ✓ Pipe Section Loss
- ✓ Embankment Destabilization



**Roadway Failure w/ Steel Road Plate**



**100% Section Loss Along Pipe Invert**



**Failing Outlet Headwall**

# 232 W Marthona Road Culvert Replacement

## Proposed Conditions

### Description:

The proposed culvert replacement will include replacing the CMP Culvert with a Reinforced Concrete Box Bridge, Reinforced Concrete Wingwalls, Roadway Reconstruction, and Site Restoration.

**Spans:** 1

**Length:** 42'

**Width:** 8'

**Rise:** 2.5'

**Opinion of Probable Cost:** \$330,000

**Anticipated Construction Duration:** 3 Month

**Anticipated Schedule for Construction:**

September 7<sup>th</sup> through December 7<sup>th</sup>

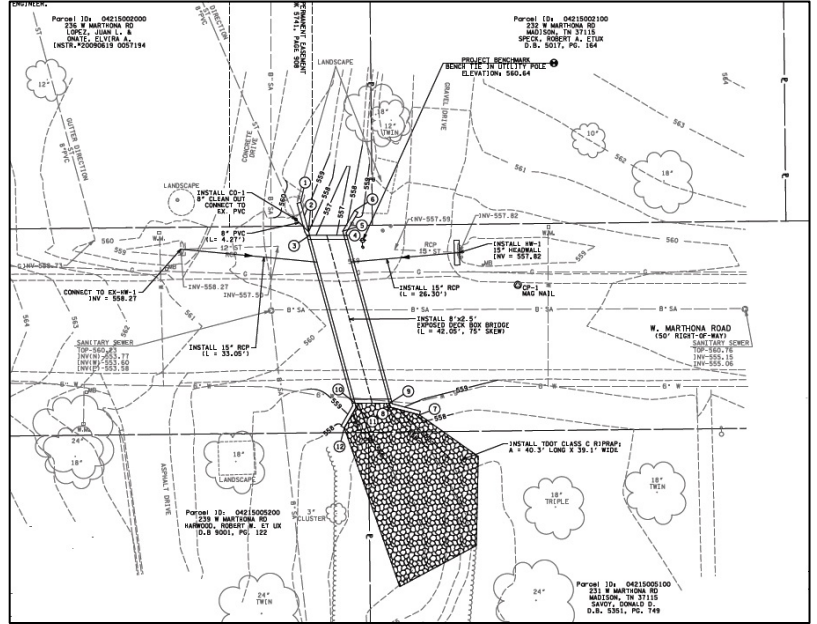
**Anticipated Road Closures:**

September 7<sup>th</sup> through December 7<sup>th</sup>

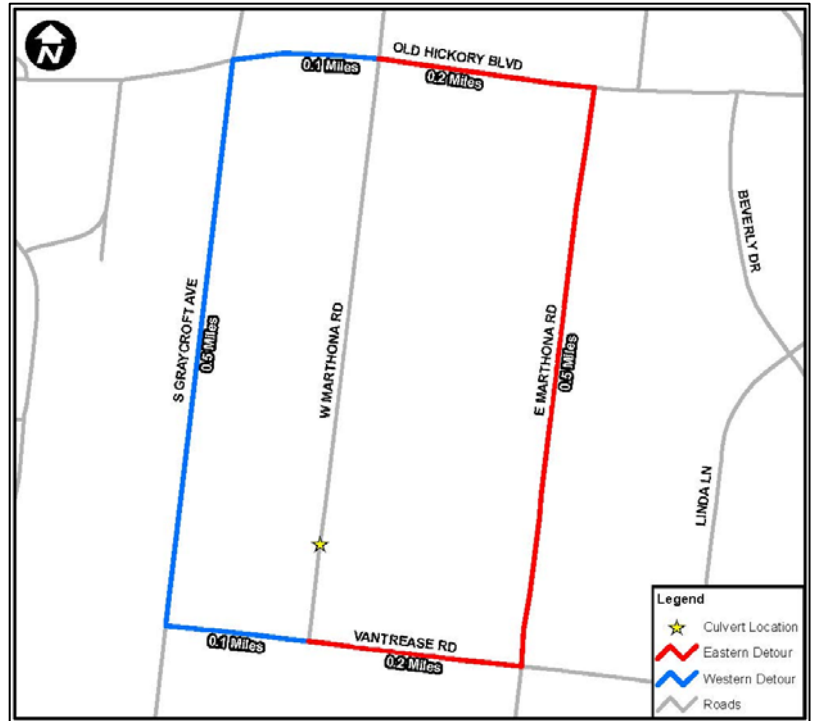
**Project Status:** Ready for construction

**Construction Challenges:**

- ✓ Utility Relocations
- ✓ Site Maintenance
- ✓ Stormwater Management



Plan Layout



Detour Map