

Nashville Department of Transportation
and Multimodal Infrastructure

SADLER AVENUE AT-GRADE RAILROAD CROSSING MITIGATION

Brad Freeze, P.E. Chief Engineer
October 5, 2022



INTRODUCTIONS

Colby Sledge

Council Member and Project Champion

Brad Freeze, P.E.

NDOT Chief Engineer

Katrina Jones, P.E.

NDOT Capital Projects Manager

Shane Hester, P.E.

TDOT Region 3 Project Development Director

Shaun Armstrong, P.E.

TDOT Assistant Director, Project Management

Houston Greer

TDOT Region 3 ROW Manager



AGENDA



- **Sadler Avenue At-Grade Crossing History**
- **Roles and Responsibilities (NDOT, TDOT, CSX)**
- **Proposed Bridge Location and Alignment**
- **Anticipated Project Schedule**
- **Right-of-Way/Easement Process**
- **Q & A**

SADLER AVENUE AT-GRADE RR CROSSING HISTORY



Nashville residents say train regularly stops, blocks dead-end street

- “We all work hard in this neighborhood,” said Diana Zadlo. “We haven’t been able to get to our jobs sometimes or we can’t get home after a long day.”
- “That’s definitely always a concern. Whether it’s a fire or someone has to get to a hospital, or an ambulance has to get to you, there’s no way to actually get to you,” said neighbor Edmond Villa.



Stopped Train Cuts Off Access To, From Neighborhood For Hours

- “If we had an emergency, someone had a heart attack or something, we would be in some trouble, you know?” said Willie Holman, who lives on the street, and said trains blocking the intersection has been a problem for years.



Nashville mayor proposes building a bridge over Sadler Avenue to solve railroad blockage

- Nashville Mayor John Cooper's office announced plans for a new bridge over Sadler Avenue, which he hopes will solve a constant railroad blockage preventing access to a nearby neighborhood.

PROJECT TEAM ROLES AND RESPONSIBILITIES



NDOT

The logo for the North Carolina Department of Transportation (NDOT) features the letters "NDOT" in a bold, blue, serif font. A thick yellow horizontal bar is positioned below the text.

Project Lead and Funding



**Design, R.O.W./Easement
Acquisitions and
Construction Delivery**



Funding Participation

PROPOSED NEW BRIDGE LOCATION AND ALIGNMENT



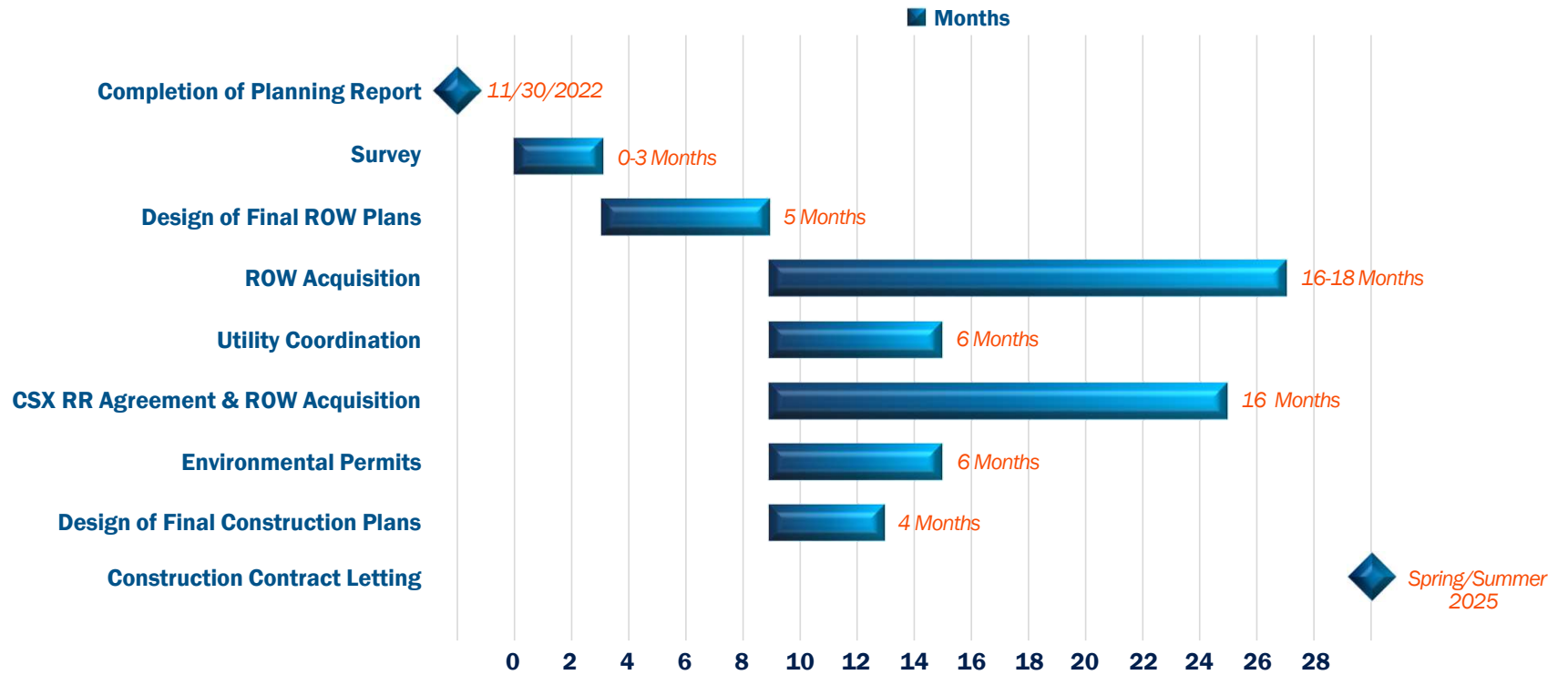
Factors Evaluated for Alignment Determination:

- Topography
- Impacts to Right-of-Way
- Railroad Considerations
- Neighborhood Connectivity

PROJECT MAP



ANTICIPATED PROJECT SCHEDULE



RIGHT-OF-WAY/ EASEMENT PROCESS

- Title Searches
- Appraisals
- Acquisitions
- Relocation Assistance & Payments
- Eminent Domain Proceedings (if necessary)
- Right-of-Way Clearance



THANK YOU

