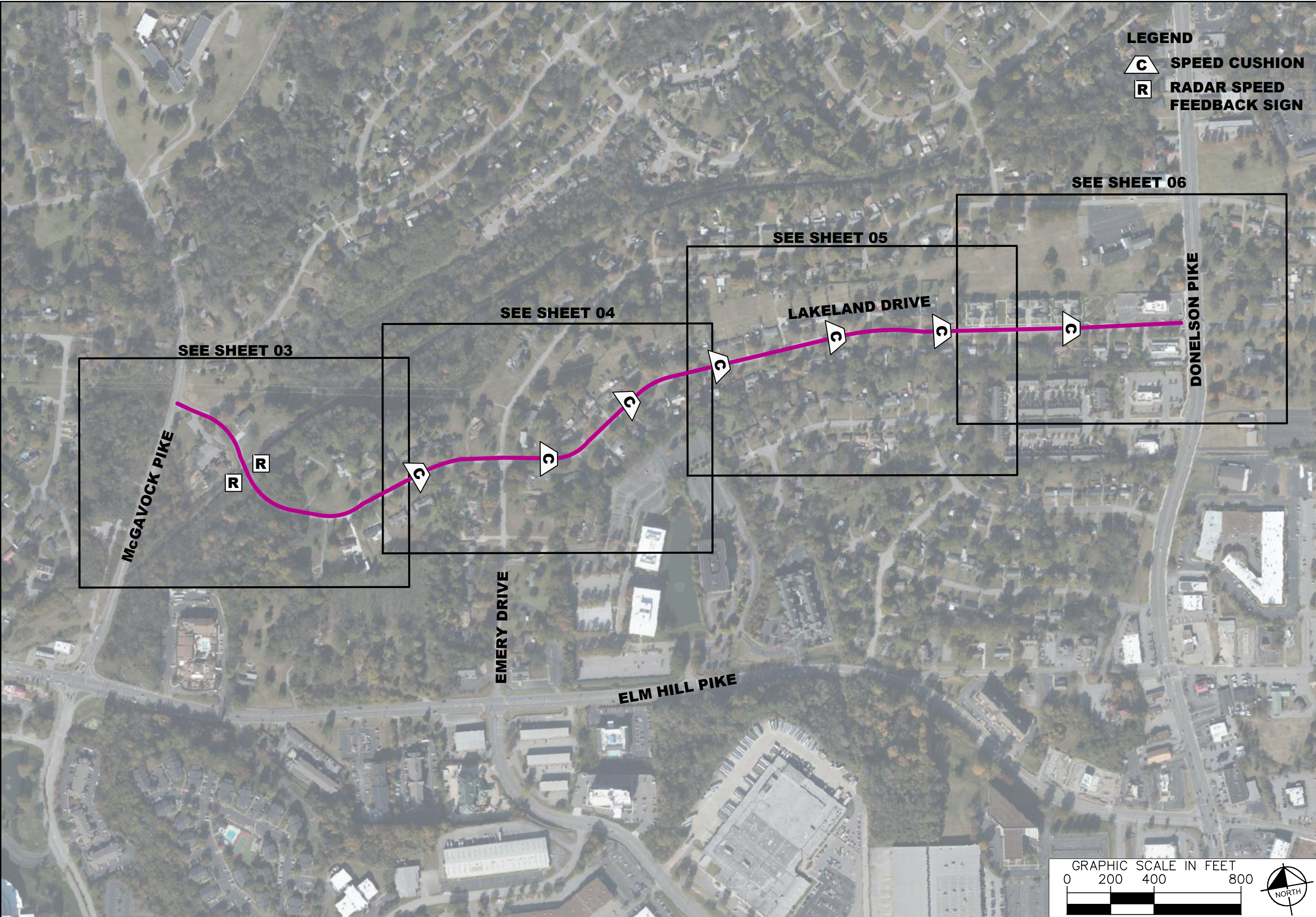


This document, together with the concepts and designs presented herein, is intended only for the specific purpose and client for which it was prepared. Reuse of and improper reliance on the documents without written authorization and adaptation by Kimley-Horn and Associates, Inc. shall be without liability to Kimley-Horn and Associates, Inc.



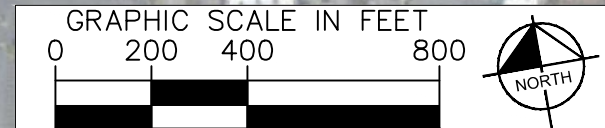
- LEGEND**
-  **SPEED CUSHION**
 -  **RADAR SPEED FEEDBACK SIGN**



LAKELAND POINTE
TRAFFIC CALMING
NASHVILLE, TN

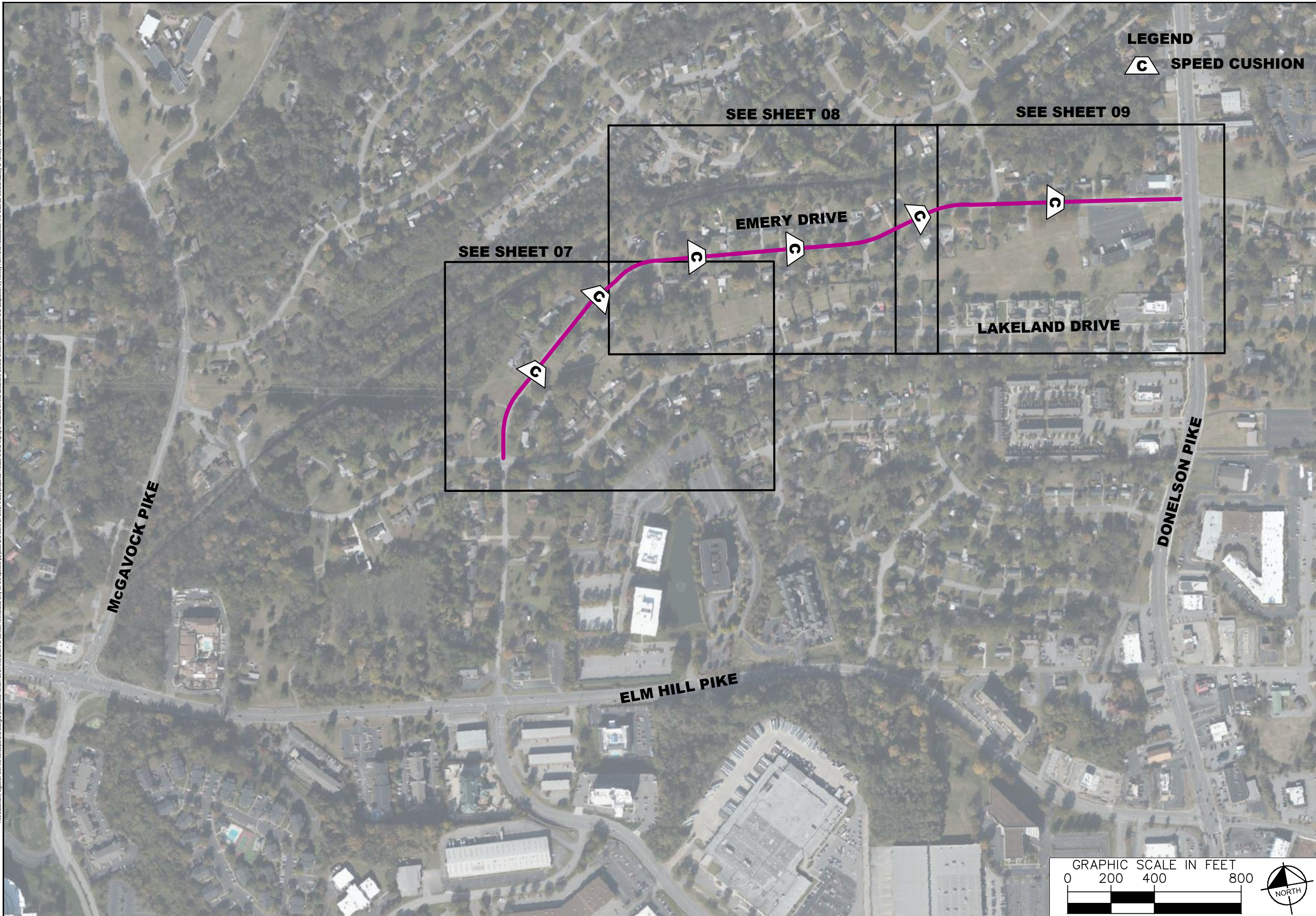


DESIGNED BY:	JH
DRAWN BY:	EJW
CHECKED BY:	NDOT
DATE:	1/4/2023
KIMLEY-HORN PROJECT NO.:	11800005



CONCEPT PLAN
SHEET NUMBER
01

This document, together with the concepts and designs presented herein, is intended only for the specific purpose and client for which it was prepared. Reuse of and improper reliance on the documents without written authorization and adaptation by Kimley-Horn and Associates, Inc. shall be without liability to Kimley-Horn and Associates, Inc.



LEGEND
C SPEED CUSHION

SEE SHEET 08

SEE SHEET 09

SEE SHEET 07

EMERY DRIVE

LAKELAND DRIVE

McGAVOCK PIKE

ELM HILL PIKE

DONELSON PIKE

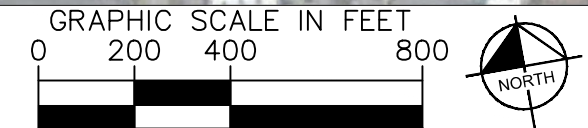
NDOT

LAKELAND POINTE
TRAFFIC CALMING
NASHVILLE, TN

BURCH
TRANSPORTATION

DESIGNED BY: JH
DRAWN BY: EJW
CHECKED BY: NDOT
DATE: 1/4/2023
KIMLEY-HORN PROJECT NO. 11800005

CONCEPT PLAN
SHEET NUMBER
02

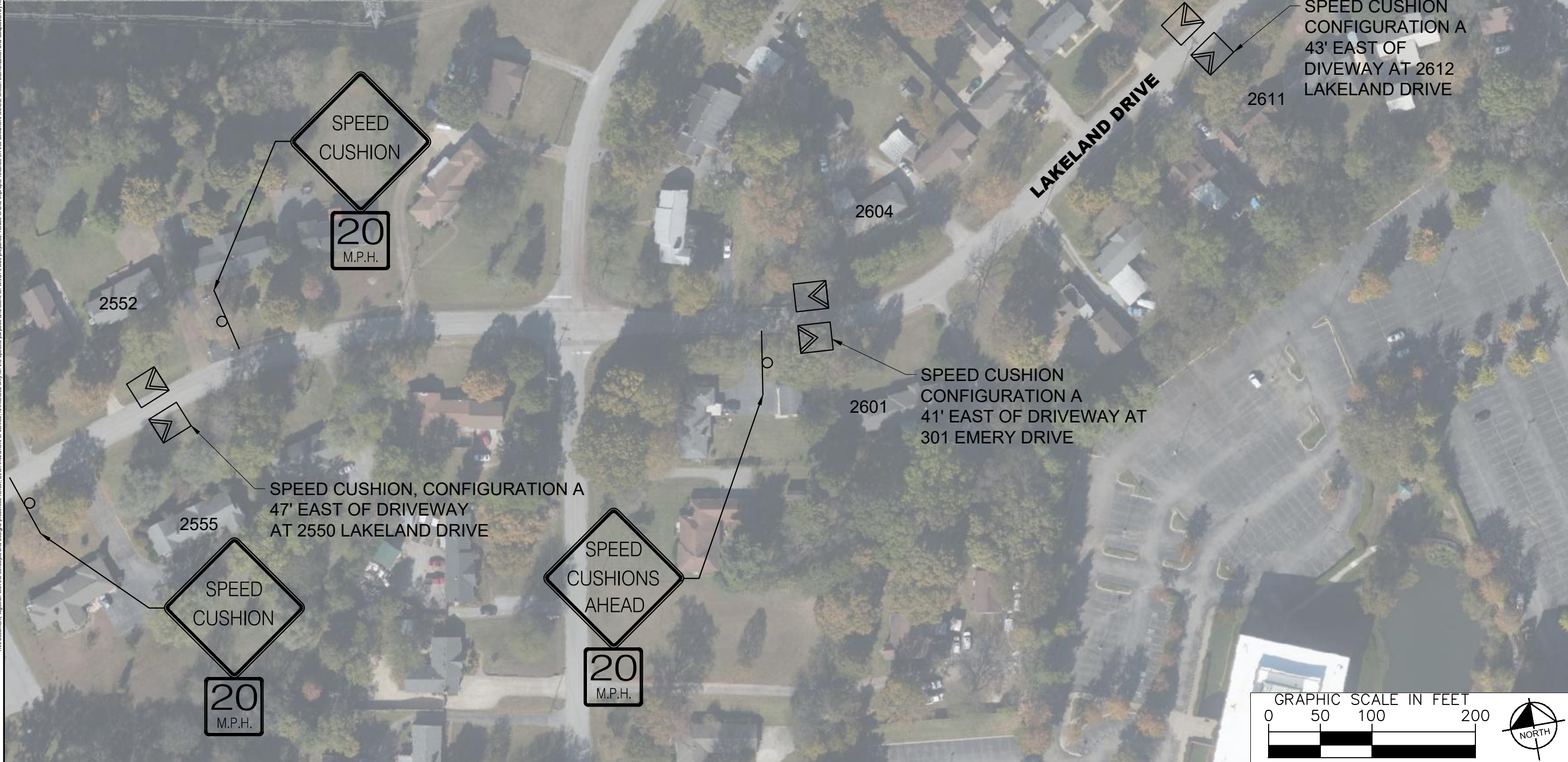


This document, together with the concepts and designs presented herein, is intended only for the specific purpose and client for which it was prepared. Reuse of and improper reliance on the document without written authorization and adaptation by Kimley-Horn and Associates, Inc. shall be without liability to Kimley-Horn and Associates, Inc.



DESIGNED BY:	JH
DRAWN BY:	EJW
CHECKED BY:	NDOT
DATE:	1/4/2023
KIMLEY-HORN PROJECT NO.:	11800005

This document, together with the concepts and designs presented herein, is intended only for the specific purpose and client for which it was prepared. Reuse of and improper reliance on the document without written authorization and adaptation by Kimley-Horn and Associates, Inc. shall be without liability to Kimley-Horn and Associates, Inc.



LAKELAND POINTE
TRAFFIC CALMING
NASHVILLE, TN



DESIGNED BY:	JH
DRAWN BY:	EJW
CHECKED BY:	NDOT
DATE:	1/4/2023
KIMLEY-HORN PROJECT NO.:	11800005

CONCEPT PLAN
SHEET NUMBER
04

This document, together with the concepts and designs presented herein, is intended only for the specific purpose and client for which it was prepared. Reuse of and improper reliance on the documents without written authorization and adaptation by KIMLEY-HORN and Associates, Inc. shall be without liability to KIMLEY-HORN and Associates, Inc.



NDOT

**LAKELAND POINTE
TRAFFIC CALMING
NASHVILLE, TN**



DESIGNED BY: JH
DRAWN BY: EJJW
CHECKED BY: NDOT
DATE: 1/4/2023
KIMLEY-HORN PROJECT NO. 11800005

CONCEPT PLAN
SHEET NUMBER
05

EMERY DRIVE

DONELSON PIKE

LAKELAND DRIVE

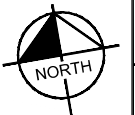
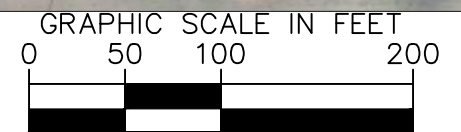


2746



2727

SPEED CUSHION CONFIGURATION A
50' EAST OF DRIVEWAY AT
2746 LAKELAND DRIVE



NDOT

LAKELAND POINTE
TRAFFIC CALMING
NASHVILLE, TN



DESIGNED BY: JH
DRAWN BY: EJW
CHECKED BY: NDOT
DATE: 1/4/2023
KIMLEY-HORN PROJECT NO.
118000005

CONCEPT PLAN
SHEET NUMBER
06

This document, together with the concepts and designs presented herein, is intended only for the specific purpose and client for which it was prepared. Reuse of and improper reliance on the documents without written authorization and adaptation by Kimley-Horn and Associates, Inc. shall be without liability to Kimley-Horn and Associates, Inc.

This document, together with the concepts and designs presented herein, is intended only for the specific purpose and client for which it was prepared. Reuse of and improper reliance on the document without written authorization and adaptation by Kimley-Horn and Associates, Inc. shall be without liability to Kimley-Horn and Associates, Inc.



214

211

SPEED CUSHION CONFIGURATION A
30' WEST OF DRIVEWAY AT
214 EMERY DRIVE

230

231

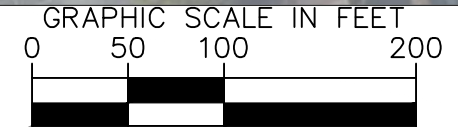
SPEED CUSHION CONFIGURATION A
68' EAST OF DRIVEWAY AT
230 EMERY DRIVE

SPEED
CUSHIONS
AHEAD

20
M.P.H.

EMERY DRIVE

LAKELAND DRIVE



LAKELAND POINTE
TRAFFIC CALMING
NASHVILLE, TN



DESIGNED BY:	JH
DRAWN BY:	EJW
CHECKED BY:	NDOT
DATE:	1/4/2023
KIMLEY-HORN PROJECT NO.:	11800005

CONCEPT PLAN
SHEET NUMBER
07

This document, together with the concepts and designs presented herein, is intended only for the specific purpose and client for which it was prepared. Reuse of and improper reliance on the document without written authorization and adaptation by Kimley-Horn and Associates, Inc. shall be without liability to Kimley-Horn and Associates, Inc.



NDOT

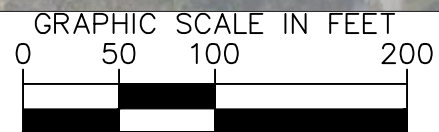
LAKELAND POINTE
TRAFFIC CALMING
NASHVILLE, TN



DESIGNED BY: JH
DRAWN BY: EJW
CHECKED BY: NDOT
DATE: 1/4/2023
KIMLEY-HORN PROJECT NO. 118000005

CONCEPT PLAN

SHEET NUMBER
08

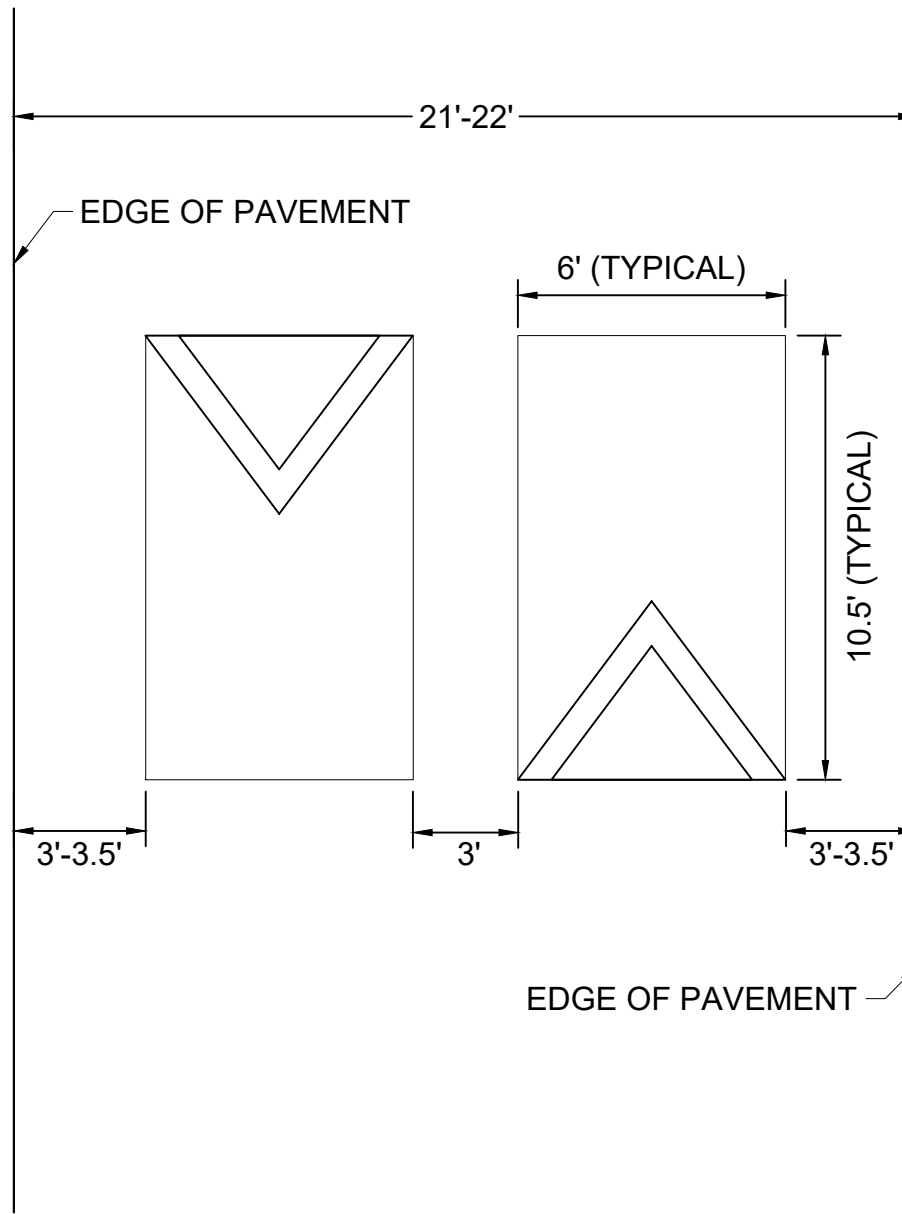


This document, together with the concepts and designs presented herein, is intended only for the specific purpose and client for which it was prepared. Reuse of and improper reliance on the documents without written authorization and adaptation by Kimmey-Horn and Associates, Inc. shall be without liability to Kimmey-Horn and Associates, Inc.



This document, together with the concepts and designs presented herein, is intended only for the specific purpose and client for which it was prepared. Reuse of and improper reliance on the documents without written authorization and signature by Kimley-Horn and Associates, Inc. shall be without liability to Kimley-Horn and Associates, Inc.

SPEED CUSHION CONFIGURATION A



LAKELAND POINTE
TRAFFIC CALMING
NASHVILLE, TN



DESIGNED BY:	JH
DRAWN BY:	EJW
CHECKED BY:	NDOT
DATE:	1/4/2023
KIMLEY-HORN PROJECT NO.	11800005

DETAIL

SHEET NUMBER

10