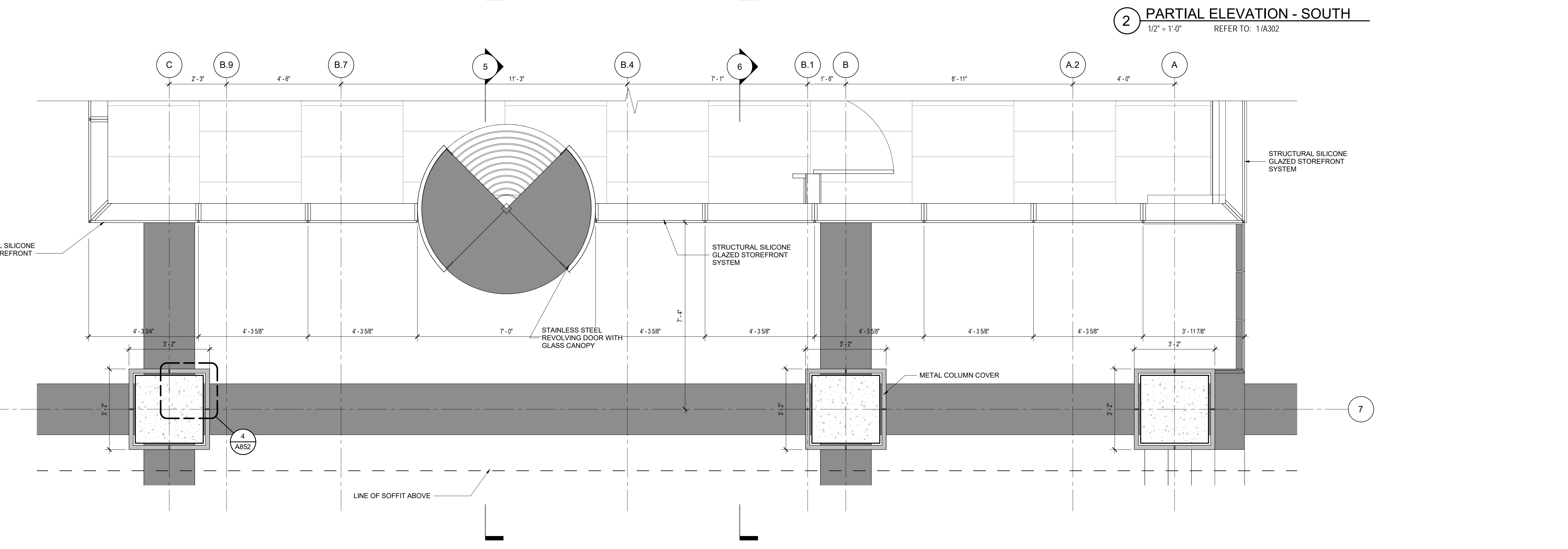
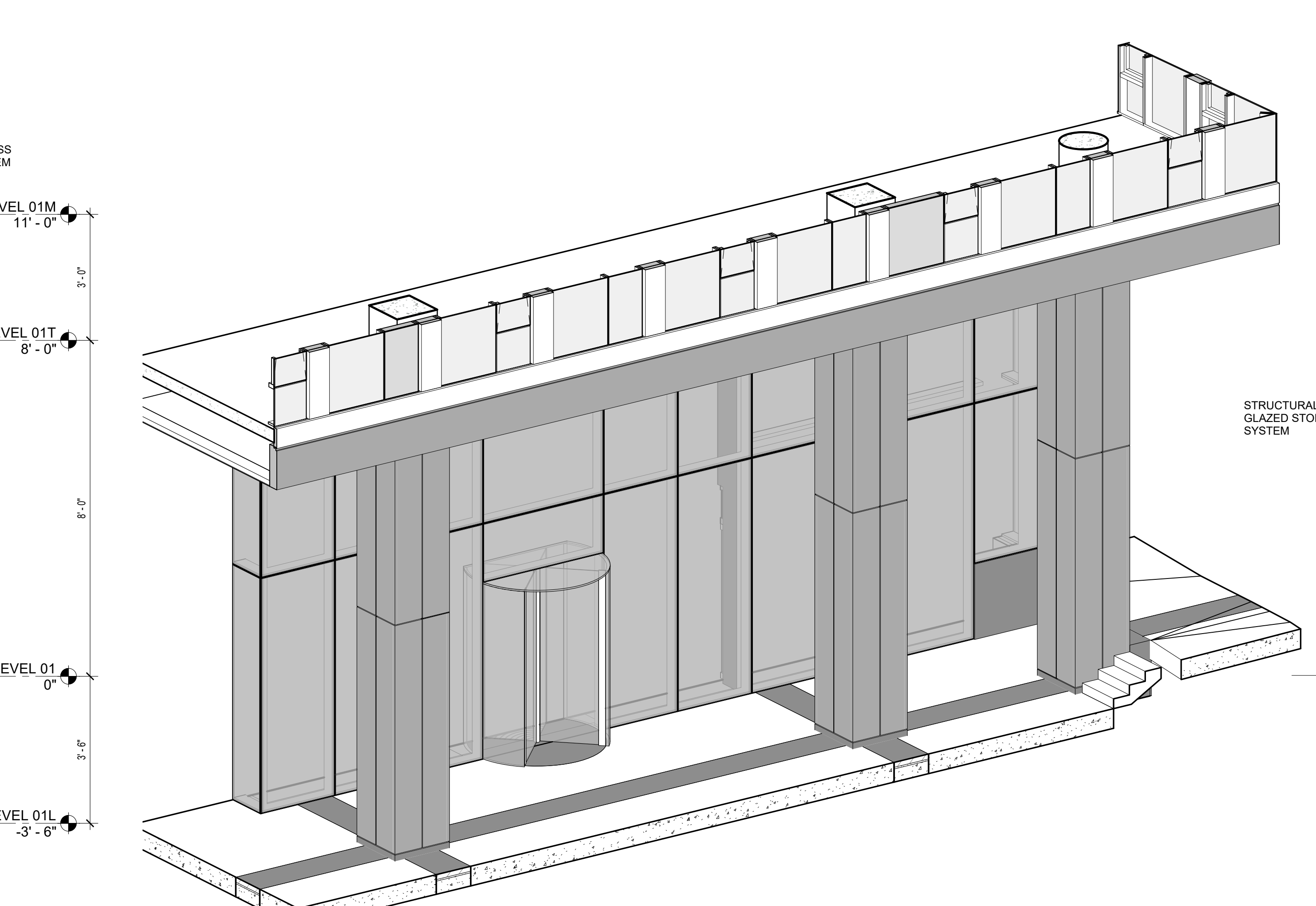
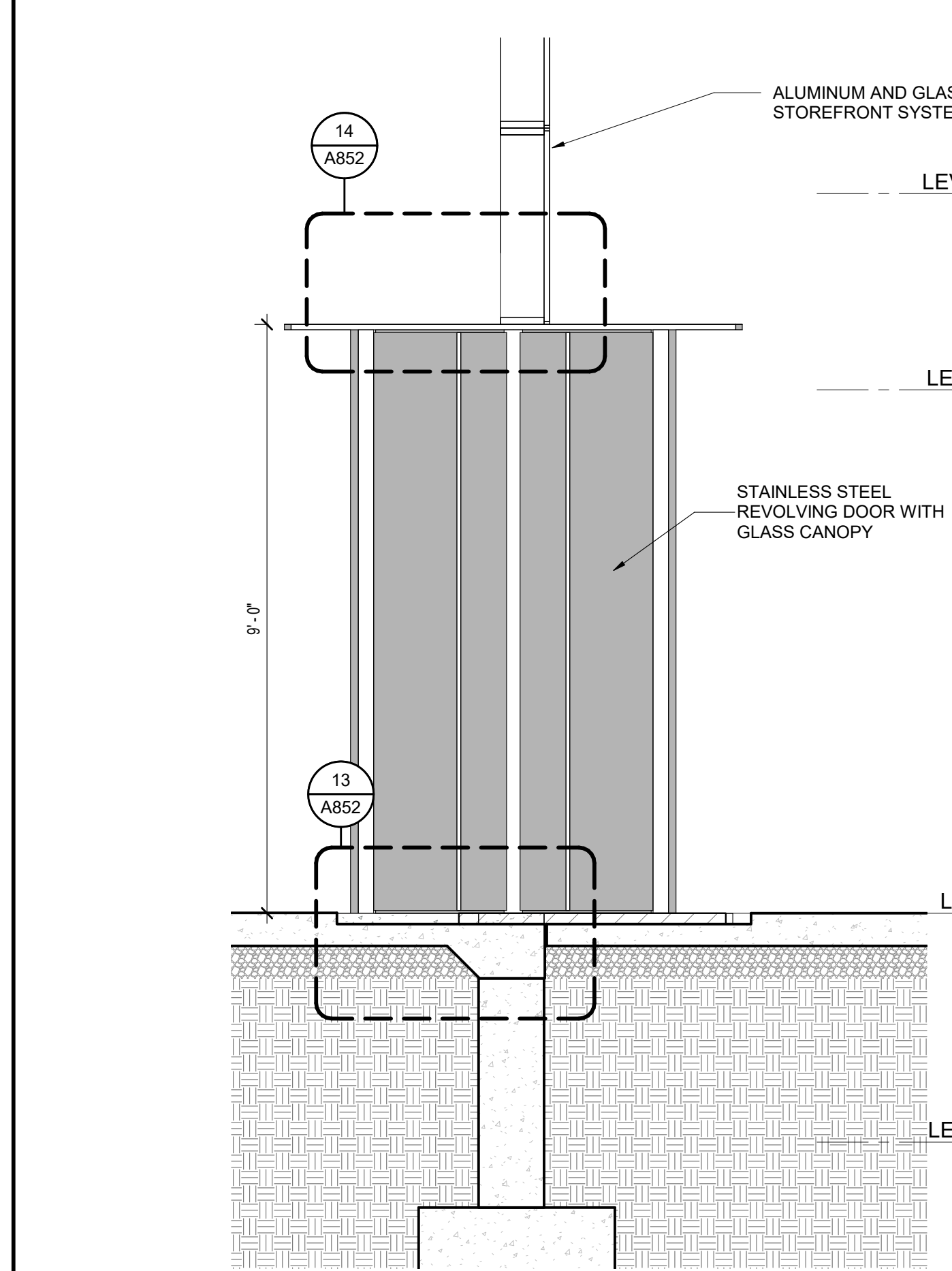


6 SECTION @ SOUTH LOBBY WALL  
1/2" = 1'-0" REFER TO: 1/A814



GRAPHIC SCALES

1" = 20'-0"	1/2" = 1'-0"
0 5 10 20 40	0 5' 1' 2'
1/16" = 1'-0"	1" = 1'-0"
0 4 8 16 32	0 2' 4' 8' 16'
1/8" = 1'-0"	1-1/2" = 1'-0"
0 2 4 8 16	0 2' 4' 8' 16'
1/4" = 1'-0"	3" = 1'-0"
0 1 2 4 8	0 1' 2' 4' 8'

MATERIAL LEGEND

GL1: HIGH PERFORMANCE INSULATING VISION GLASS W/ LOW-E SILVER GRAY COATING	GL4: LAMINATED GLASS	M3: FORMED COATED ALUMINUM PLATE PANEL - MEDIUM GRAY	L1: EXTRUDED ALUMINUM LOUVER - COATING TO MATCH M3
GL1A: GL1 SPANDREL	GL5: TRANSLUCENT LAMINATED GLASS	M4: FORMED COATED ALUMINUM PLATE PANEL - DARK GRAY	SPC1: DEF'S - SMOOTH TEXTURE FINISH TO MATCH M3
GL2: HIGH PERFORMANCE INSULATING VISION GLASS W/ LOW-E DARK GRAY COATING	GL6A: INSULATING LOW-IRON GLASS WITH VIRAON V1087 FOG GRAY VIRASPAN ON #2 (1/4" HORIZONTAL STRIPES 4MM COVERAGE) AND FLOOR COAT ON #4 COLOR TO MATCH BENJAMIN MOORE-CLASSIC COLORS "OXFORD GOLD 319"	M5: FORMED ALUMINUM PANEL WITH 2 COAT MICA PVDF COATING - CUSTOM COLOR TO MATCH BENJAMIN MOORE-CLASSIC COLORS "PUMPKIN SPICE 188"	SPC2: TRAFFIC COATING
GL2A: GL2 SPANDREL	GL7: HIGH PERFORMANCE INSULATING LOW-IRON VISION GLASS W/ LOW-E NEUTRAL COATING	M6: CORRUGATED COATED ALUMINUM PANEL - LIGHT SILVER	SPC3: ELASTOMERIC COATING
GL3: HIGH PERFORMANCE INSULATING LOW-IRON VISION GLASS W/ LOW-E NEUTRAL COATING	GL3A: GL3 SPANDREL - HORIZONTAL STRIPES PRINT PATTERN ON #2 SURFACE	M7: STAINLESS STEEL - BRUSHED FINISH	ST1A: GRANITE - FLAMED - ROYAL BLACK
			ST1B: GRANITE - SANDBLASTED - ROYAL BLACK

- PLAN NOTES
- WINDOW WALL MODULE DIMENSIONS TAKEN TO CENTERLINE OF SILICONE JOINT AT FACE OF GLASS
  - METAL PANEL MODULE DIMENSIONS TAKEN TO CENTERLINE OF REVEAL
  - GLASS GUARDRAILS AND WINDSCREEN MODULE DIMENSIONS TAKEN FROM CENTERLINE OF POST
  - FOAM PLASTIC INSULATION SHALL NOT BE USED IN GLAZED METAL PANELS AND METAL BACK PANS
  - REFER TO A880 FOR EXTERIOR ENCLOSURE UL LISTING AND ASSEMBLY INFORMATION
  - REFER TO G025 FOR GENERAL REQUIREMENTS FOR BUILDING ENCLOSURE

- GENERAL NOTES
- KEYNOTES

CONTRACTOR SHALL BE RESPONSIBLE FOR REVIEWING ALL PLANS AND SPECIFICATIONS, VERIFYING ALL EXISTING CONDITIONS PRIOR TO PROCEEDING WITH CONSTRUCTION, COMPLYING WITH ALL APPLICABLE BUILDING CODES, AND NOTIFYING ARCHITECT IMMEDIATELY OF ANY DISCREPANCIES OR CONFLICTS. CONTRACTOR SHALL CONSTRUCT THE WORK IN CONFORMANCE WITH ALL APPLICABLE BUILDING CODES.

CONTRACTOR IS RESPONSIBLE FOR DESIGN AND INSTALLATION OF PROPERLY SIZED AND LOADED SYSTEMS. SUBMIT SHOP DRAWINGS TO ARCHITECT FOR REVIEW OF CONFORMITY TO ARCHITECTURAL DESIGN INTENT.

A WRITTEN ARCHITECTURAL SPECIFICATION WAS ISSUED FOR THIS PROJECT, AND ALONG WITH THESE PRINTED DOCUMENTS, CONSTITUTE THE CONTRACT DOCUMENTS FOR THIS PROJECT. WORK SCOPE PERTINENT TO ALL DISCIPLINES OCCURS THROUGHOUT THE CONTRACT DOCUMENTS. BY SUBMITTING A BID FOR THIS WORK, THE CONTRACTOR AND ALL SUBCONTRACTORS ATTEST THAT THEY HAVE INCLUDED ALL APPLICABLE WORK. ADDITIONAL ARCHITECTURAL SPECIFICATION COPIES ARE AVAILABLE ANYTIME UPON REQUEST.

900 CHURCH  
900 CHURCH STREET  
NASHVILLE, TENNESSEE

**GOETTSCH PARTNERS**  
Architecture Interiors Planning  
224 South Michigan, Floor 17  
Chicago, Illinois 60604  
P +1 312 356 0600 F +1 312 356 0601  
gpc@goettsch.com  
COPYRIGHT 2020 GOETTSCH PARTNERS, INC.

GIARRATANA, LLC  
Owner  
424 Church Street, Suite 2500 Nashville, TN 37219

GOETTSCH PARTNERS  
Architect  
224 S. Michigan Avenue, Suite 1700 Chicago, IL 60604

DESIMONE CONSULTING ENGINEERS  
Structural Engineer  
150 N. Wacker Drive, Suite 2660 Chicago, IL 60606

LEE COMPANY  
Mechanical / Plumbing Design-Build  
4057 Rural Plains Circle, Franklin, TN 37064

BALA CONSULTING ENGINEERS  
Electrical Engineer  
443 South Gulph Road, King of Prussia, PA 19406

JOHNSON CONTROLS, INC.  
Fire Protection Design-Build  
2005 Elm Hill Pike, Nashville, TN 37210

BARGE DESIGN SOLUTIONS, INC.  
Civil Engineer / Landscape Architect  
615 3rd Avenue South, Suite 700 Nashville, TN 37210

AQUATICS H2O, LLC  
Aquatic Consultant  
234 Heather Glen Drive, Bowling Springs, SC 29316

KEY PLAN

04/19/2021	ISSUED FOR CONSTRUCTION	
02/17/2021	ISSUED FOR ADDENDUM 06	
01/22/2021	ISSUED FOR ADDENDUM 05	
01/06/2021	ISSUED FOR ADDENDUM 04	
11/18/2020	R/W/R RFI 030	
10/01/2020	ISSUED FOR BUILDING PERMIT	
06/03/2020	ISSUED FOR R/S CONSTRUCTION DOCUMENTS	
01/10/2020	ISSUED FOR 100% DESIGN DEVELOPMENT	
10/10/2019	ISSUED FOR 100% SCHEMATIC DESIGN	
NO.	DATE	DESCRIPTION

PROJECT NUMBER: 19300  
DATE: 04/19/2021  
SHEET TITLE: PODIUM ENCLOSURE - SOUTH  
SHEET NUMBER: A814