

# Where do you live?



Sources: Esri, HERE, Garmin, USGS, Intermap, INCREMENT P, NRCan, Esri Japan, METI, Esri China (Hong Kong), Esri Korea, Esri (Thailand), NGCC, (c) OpenStreetMap contributors, and the GIS User Community, Esri, HERE, Garmin, (c) OpenStreetMap contributors, and the GIS user community



# Input Summary and Research

## Results of the First Public Meeting and Survey Combined

The community engagement process consists of two main methods to obtain project input: public meetings and an online survey. In addition, Metro Parks encouraged residents to email comments directly to them.

In October 2022, Metro Parks hosted the first public meeting to gather input on the master plan.

The key takeaways include:

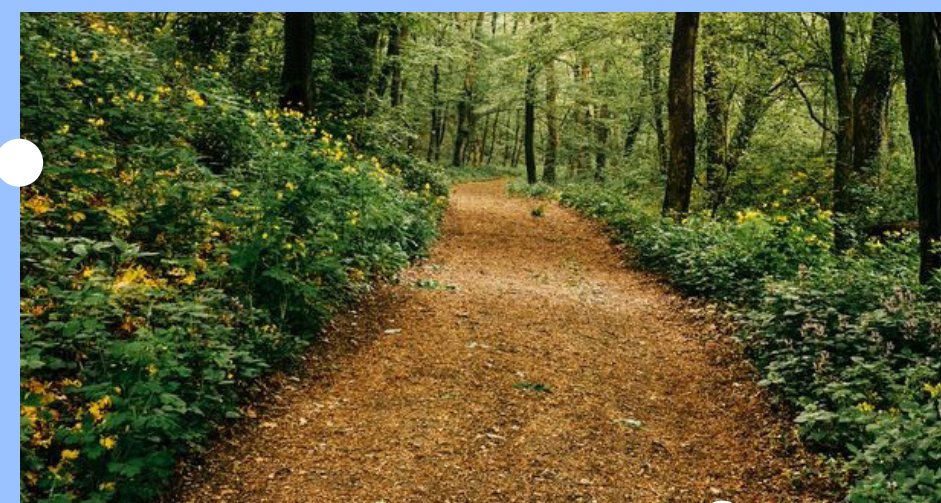
- Preserve the large existing trees onsite
- Design with families in mind
- Provide natural hiking trails and picnic areas
- Create a fun playground with swings
- Provide athletic playfields and courts
- Make the park accessible for those who walk and bike

Two conceptual schemes were developed for the park based on research and public input results.

### Top Five Desired Features

1

Natural hiking trails



2

Paved walking paths



3

Playground



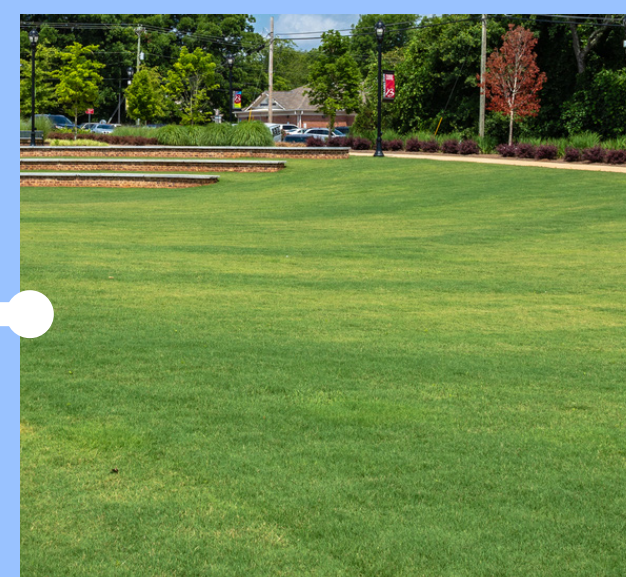
4

Pavilion with picnic tables



5

Open lawn area/gathering space



93% said they would  
**WALK** some distance if  
safe and convenient



85% said they would  
**BIKE** some distance if  
safe and convenient



# Plan to Play



Plan to Play is Metro Parks's Comprehensive Parks and Recreation Master Plan. The master plan, which was adopted by the Metro Parks Board in 2017, outlines outdoor recreation needs and opportunities. The information below is from the master plan and provides an important framework for this planning and design effort.

## Park Typologies and Examples of Neighborhood Parks

- Pocket (3 acres or less)
- Neighborhood Parks (3-20 acres)
- Community Parks (20-100 acres)
- Regional Parks (100 + acres)
- Signature & Speciality Parks (varies)
- Greenway Corridors (varies)

### Neighborhoods parks are typically:

Neighborhood parks are often the recreational and social focus of a community. Typically, active and passive uses include sport courts, playgrounds, landscaping and seating, picnic shelters, a small field, or a co-center. Existing examples of neighborhood parks include Bellevue Park and Richland Park.

#### Example: Bellevue Park (Red Caboose Park)



<https://www.facebook.com/redcaboosepark/>

#### Example: Fannie Mae Dees Park



<https://nashvillepublicart.com/2020/04/11/the-dragons-of-fannie-mae-dees-park/>

## Plan to Play's Guiding Principles

### Open to all

We distribute resources throughout Nashville to ensure equitable access and inclusion for everyone.

### Relevant and Diverse

We offer places, activities and experiences that are as varied as the Nashville community itself.

### Transparent

We design and manage clean and safe parks and facilities.

### Strategic and Productive

We plan for successful outcomes through efficiency, cost-effectiveness and the balancing of varied interests. We develop effective partnerships in the public interest.

### Healthy

Our facilities and programs support the integration of health and wellness into everyday life.

### Green

The acquisition, development, and management of our park infrastructure reflect best practices in the management of natural resources and the ecological services they provide.

### Safe

We design and manage clean and safe parks and facilities.

### A Good Investment

We contribute to the prosperity of Nashville through economic impact, public health, climate resilience and quality of life.

### Uniquely Nashville (Antioch)

Through community spaces, stewardship and education, we promote the natural, cultural and creative character of our community.



# Plan to Play



As part of the Metro Parks Comprehensive Parks and Recreation Master Plan, there is a level of service analysis. This analysis assesses the community's needs and calculates the deficiencies based on the number of people. The Master Plan lists a total of eleven facilities needed. Below are the top five facilities for reference.

## Plan to Play: Top Five Amenities Needed County-wide

1

Playgrounds

65 Sites Needed



2

Paved Multi-use Trails

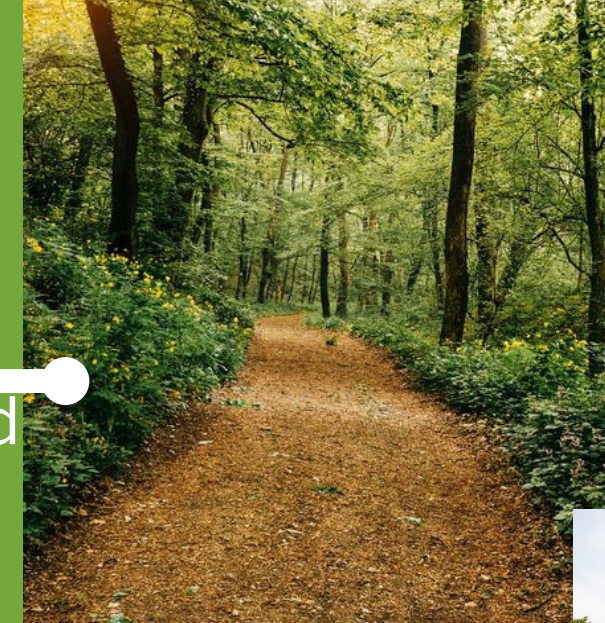
53 Miles Needed



3

Unpaved Trails/ Hiking Trails

50 Miles Needed



4

Basketball Courts

50 Courts Needed



5

Multipurpose Fields

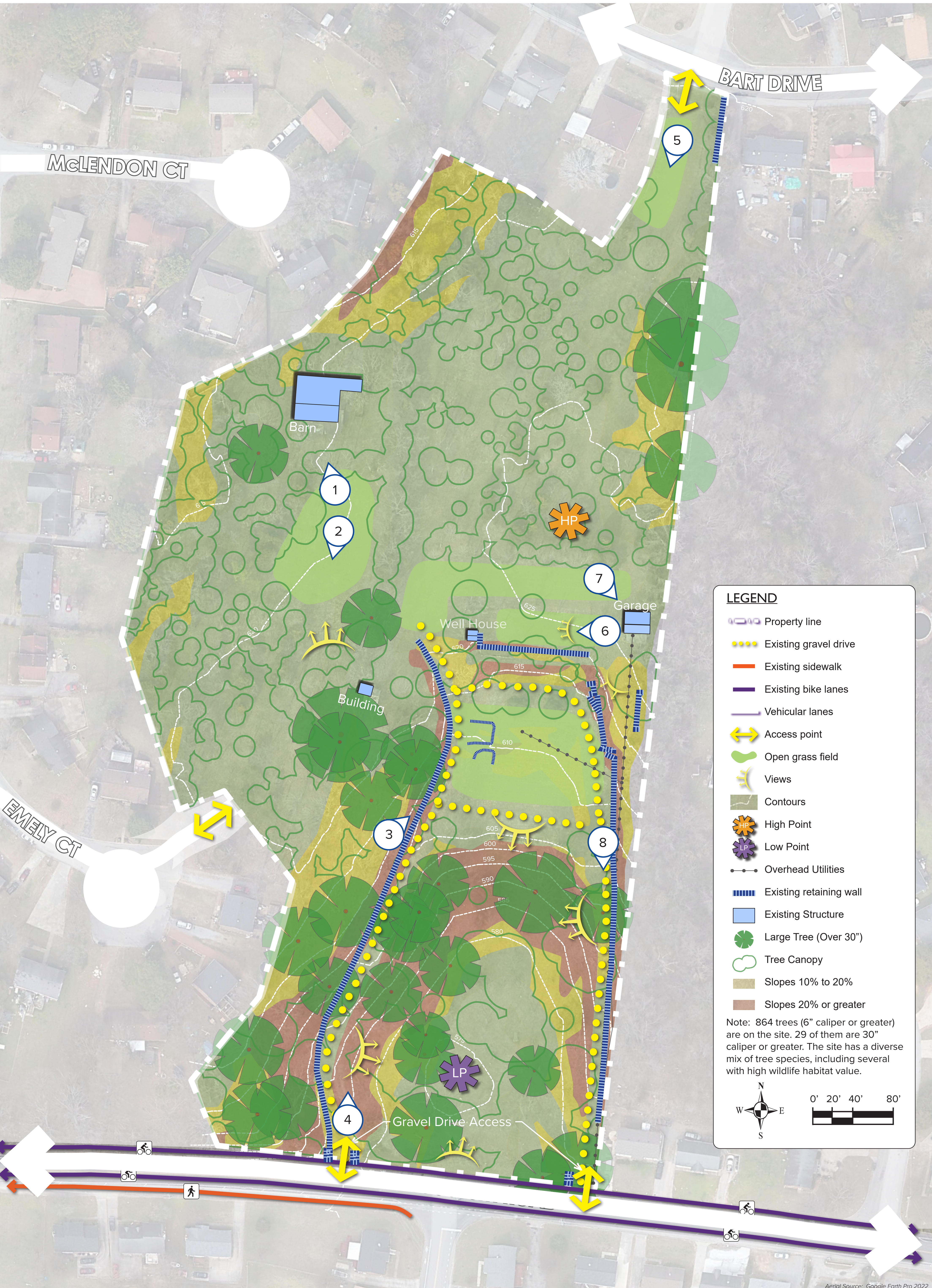
46 Fields Needed







# Site Analysis



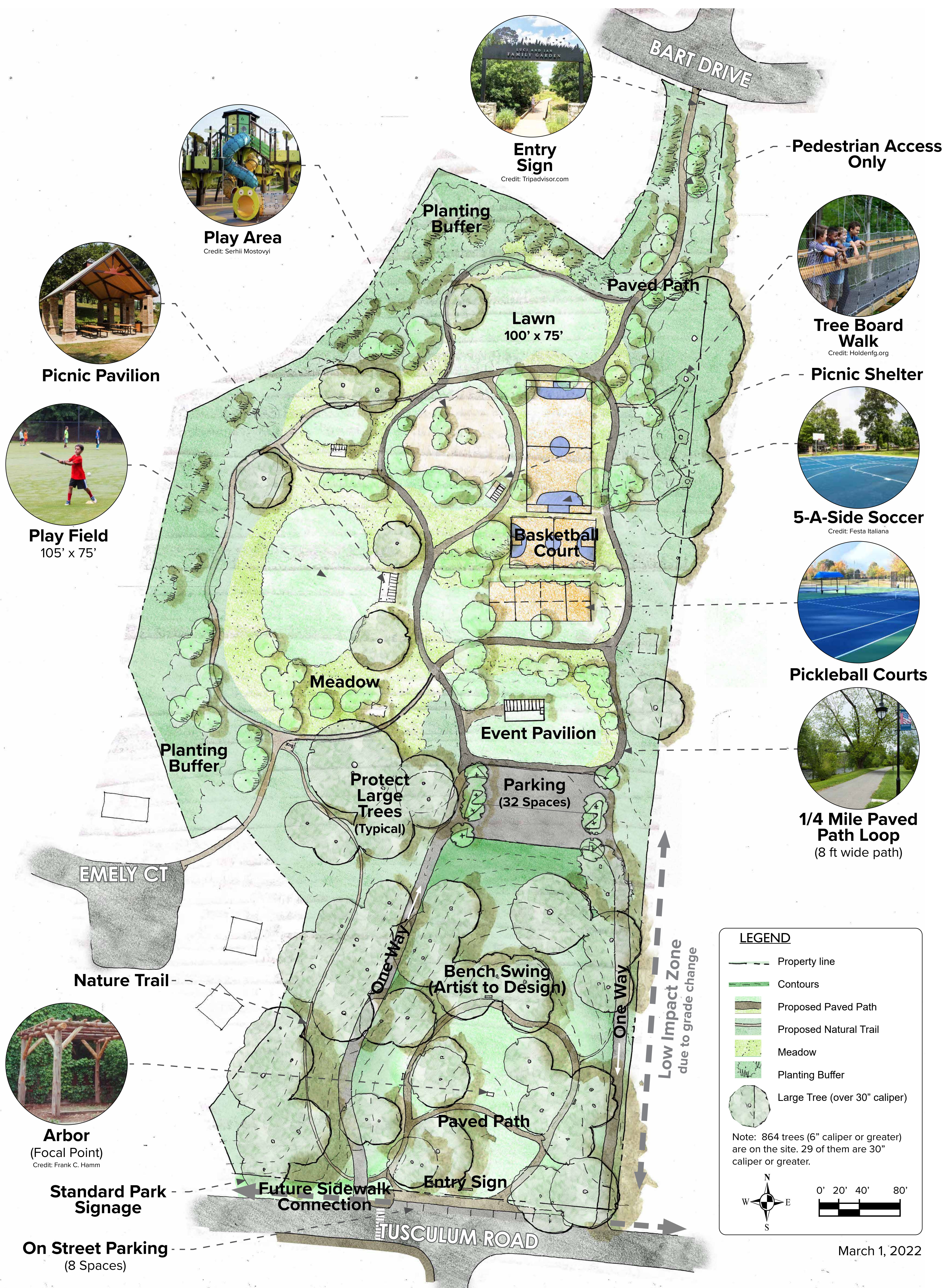


# Conceptual Site Plan: Scheme A

## Mariposa Park



**METRO  
PARKS  
NASHVILLE**



March 1, 2022



# Comments on Scheme A

---



ESTABLISHED  
1901



# Conceptual Site Plan: Scheme B

## Mariposa Park





# Comments on Scheme B

---



ESTABLISHED  
1901



# Other Comments

---



For more information and announcements on future meetings and online surveys, please see the Metro Parks' project webpage here:

