

GENERAL NOTES:
 X-VENT TO BE MIN. 3'-0" FROM ANY OPERABLE WINDOW OR DOOR OPENING.
 EIFS WILL BE A TWO PASS SMOOTH FINISH WITH HYDROPHOBIC ADDITIVE.

ELEVATION KEYNOTES

MARK	DESCRIPTION
01	EIFS FINISH - LIGHT GRAY/OFF WHITE
02	42" MAJESTIC BLACK GRANITE
03	ALUCOBOND METAL PANEL - PPG UC110628F DURANAR SUNSTORM GRAPHITE GRAY
04	ALUCOBOND METAL PANEL - LIGHT GRAY
05	EIFS - MEDIUM GRAY
06	PAINT - DARK GRAY
07	WINDOW WALL - GRAY HUE GLAZING AND DARK FRAME. MIN 60% LIGHT TRANSMISSION. FRAME: PPG UC110628F DURANAR SUNSTORM GRAPHITE GRAY
08	WINDOW WALL - SOLID PANEL TO MATCH FRAME
09	RESCUE AIR EMAC MOBILE AIR CONNECTION PANEL RECESS
10	GLASS SWING DOOR - GRAY HUE GLAZING AND DARK FRAME. FRAME: PPG UC110628F DURANAR SUNSTORM GRAPHITE GRAY
11	HM SWING DOOR - PAINT TO MATCH ADJACENT WALL COLOR
12	GLASS SLIDING DOORS - GRAY HUE GLAZING AND DARK FRAME. FRAME: PPG UC110628F DURANAR SUNSTORM GRAPHITE GRAY
13	ROLLING DOOR
14	BLACK WIRE MESH RAILING 2" X 2" OPENING PATTERN
15	SIGNAGE BY OTHER. REFER TO DTC FOR MAXIMUM AREA OF SIGNAGE
16	OPENING IN GARAGE WALLS
17	STRUCTURAL ELEMENT
18	MECHANICAL EQUIPMENT SCREEN ENCLOSURE
19	ART MURAL BY OTHERS
21	ROOF OPENING WITH TRELIS
22	REVEAL
23	GARAGE SCREENING WITH CONTENT BY OTHERS
24	PAINT TO MATCH METALLIC EIFS MEDIUM GRAY
25	PAINT TO MATCH EIFS LIGHT GRAY/OFF WHITE
26	RETAINING WALL. COORDINATE WITH CIVIL AND STRUCTURE DRAWINGS
27	GLASS RAILING
28	BALCONY ENCLOSURE FOR UNITS AT POOL DECK
29	GAS REGULATOR NICHE. COORDINATE WITH CIVIL AND MEP. FINISHES WRAPS ON ALL SURFACES INCLUDING CEILING OF THE NICHE.
30	BALCONY CEILING & EDGES: SHERWIN WILLIAMS SW7063 NEBULOUS WHITE

FINISH LEGEND

	FINISH LIGHT COLOR		VISION GLASS
	FINISH LIGHT GRAY COLOR		BREAK METAL
	FINISH MID GRAY COLOR		SPANDREL GLASS
	FINISH DARK GRAY COLOR		OPENING
	METAL PANEL FINISH DARK GRAY COLOR		LOUVER
	ART		MESH RAILING

ALL IDEAS, DECISIONS, ARRANGEMENTS AND PLANS INDICATED OR REPRESENTED BY THIS DRAWING ARE OWNED BY AND THE PROPERTY OF BAKER BARRIOS ARCHITECTS, INC. AND WERE CREATED, DEVELOPED, AND DELIVERED BY OR FOR BAKER BARRIOS ARCHITECTS, INC. IN CONNECTION WITH THE PROJECT HEREIN. NO PART OF THIS DRAWING OR PLANS SHALL BE USED BY OR DISCLOSED TO ANY PERSON, FIRM, OR CORPORATION FOR ANY PURPOSE WHATSOEVER WITHOUT THE WRITTEN PERMISSION OF BAKER BARRIOS ARCHITECTS, INC. ANY REPRODUCTION HEREOF IS A CRIMINAL OFFENSE UNDER 18 U.S.C. SEC. 1030 UNAUTHORIZED DISCLOSURE MAY CONSTITUTE TRADE SECRET VIOLATION IN VIOLATION OF 18 U.S.C. 1832 AND OTHER LAWS. THE IDEAS, ARRANGEMENTS AND DECISIONS DISCLOSED HEREIN MAY BE PATENTED OR BE THE SUBJECT OF PENDING PATENT APPLICATIONS.

NO	DATE	REVISION / SUBMISSION
	03/01/2022	PRICING SET
	05/16/2022	PRICING SET
3	05/30/2022	VERTICAL PERMIT
	TBD	BBA RFI
5	12/22/2022	RESPONSE TO COMMENTS
7	02/16/2023	CONFORMED PROJECT SET
8	02/22/2023	DTC RESPONSE TO COMMENTS

TO THE BEST OF THE ARCHITECTS OR ENGINEERS KNOWLEDGE AND ABILITY, THE PLANS AND SPECIFICATIONS COMPLY WITH THE APPLICABLE MINIMUM BUILDING CODES.
 Jedd R. Prest, AIA
 AR107147

B NASHVILLE
 700 12TH AVE. S., SUITE 302A
 NASHVILLE, TENNESSEE 37203
 615 921 0570
 INFO@BAKERBARRIOS.COM
 BAKERBARRIOS.COM
 AA0002981 | LC26000427

Baker Barrios

SOCIETY NASHVILLE
 915 DIVISION, LLC
 915 Division St. Nashville, TN 37203

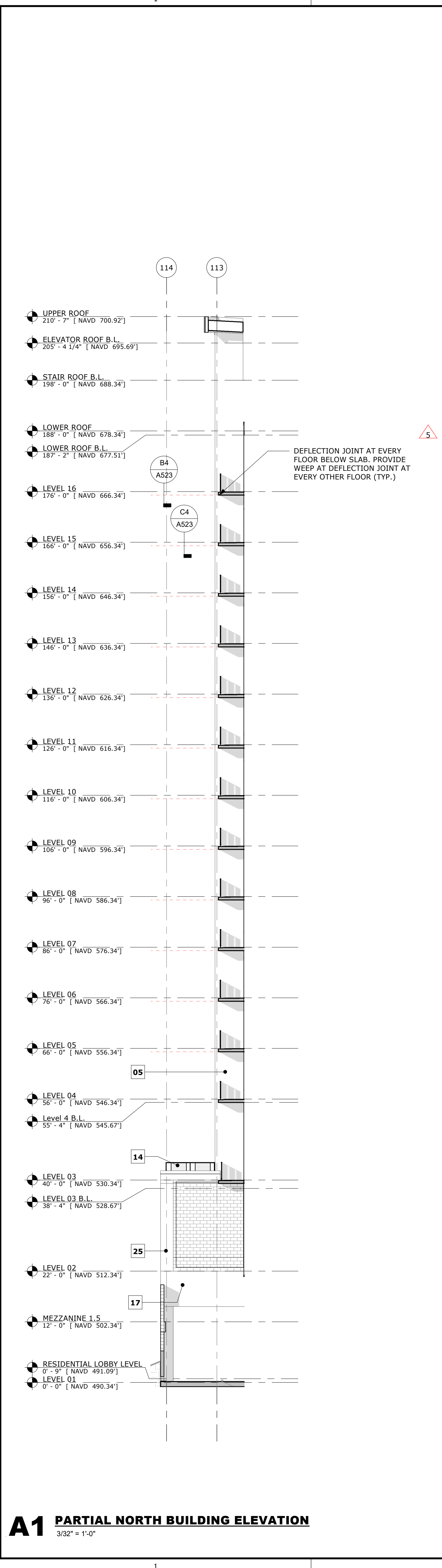
VOL I

BUILDING ELEVATION
 PROJECT NO: 200225.00 SHEET NUMBER: **A201B**

BIM 360://200225.00 - PMG 915 Division St Nashville/200225.00_A201.rvt

2/22/2023 4:16:29 PM

A1 PARTIAL NORTH BUILDING ELEVATION
 3/32" = 1'-0"



GENERAL NOTES:
 X-VENT TO BE MIN. 3'-0" FROM ANY OPERABLE WINDOW OR DOOR OPENING.
 EIFS WILL BE A TWO PASS SMOOTH FINISH WITH HYDROPHOBIC ADDITIVE.

ELEVATION KEYNOTES	
MARK	DESCRIPTION
01	EIFS FINISH - LIGHT GRAY/OFF WHITE
02	42" MAJESTIC BLACK GRANITE
03	ALUCOBOND METAL PANEL - PPG UC110628F DURANAR SUNSTORM GRAPHITE GRAY
04	ALUCOBOND METAL PANEL - LIGHT GRAY
05	EIFS - MEDIUM GRAY
06	PAINT - DARK GRAY
07	WINDOW WALL - GRAY HUE GLAZING AND DARK FRAME. MIN 60% LIGHT TRANSMISSION. FRAME: PPG UC110628F DURANAR SUNSTORM GRAPHITE GRAY
08	WINDOW WALL - SOLID PANEL TO MATCH FRAME
09	RESCUE AIR EMAC MOBILE AIR CONNECTION PANEL RECESS
10	GLASS SWING DOOR - GRAY HUE GLAZING AND DARK FRAME. FRAME: PPG UC110628F DURANAR SUNSTORM GRAPHITE GRAY
11	HM SWING DOOR - PAINT TO MATCH ADJACENT WALL COLOR
12	GLASS SLIDING DOORS - GRAY HUE GLAZING AND DARK FRAME. FRAME: PPG UC110628F DURANAR SUNSTORM GRAPHITE GRAY
13	ROLLING DOOR
14	BLACK WIRE MESH RAILING 2" X 2" OPENING PATTERN
15	SIGNAGE BY OTHER. REFER TO DTC FOR MAXIMUM AREA OF SIGNAGE
16	OPENING IN GARAGE WALLS
17	STRUCTURAL ELEMENT
18	MECHANICAL EQUIPMENT SCREEN ENCLOSURE
19	ART MURAL BY OTHERS
21	ROOF OPENING WITH TRELLIS
22	REVEAL
23	GARAGE SCREENING WITH CONTENT BY OTHERS
24	PAINT TO MATCH METALLIC EIFS MEDIUM GRAY
25	PAINT TO MATCH EIFS LIGHT GRAY/OFF WHITE
26	RETAINING WALL. COORDINATE WITH CIVIL AND STRUCTURE DRAWINGS
27	GLASS RAILING
28	BALCONY ENCLOSURE FOR UNITS AT POOL DECK
29	GAS REGULATOR NICHE. COORDINATE WITH CIVIL AND MEP. FINISHES WORKS ON ALL SURFACES INCLUDING CEILING OF THE NICHE.
30	BALCONY CEILING & EDGES: SHERWIN WILLIAMS SW7063 NEBULOUS WHITE

FINISH LEGEND			
	FINISH LIGHT COLOR		VISION GLASS
	FINISH LIGHT GRAY COLOR		BREAK METAL
	FINISH MID GRAY COLOR		SPANDREL GLASS
	FINISH DARK GRAY COLOR		OPENING
	METAL PANEL FINISH DARK GRAY COLOR		LOUVER
	ART		MESH RAILING

NO	DATE	REVISION/ SUBMISSION
03/01/2022		PRICING SET
05/16/2022		PRICING SET
3	05/30/2022	VERTICAL PERMIT
5	12/22/2022	RESPONSE TO COMMENTS
7	02/16/2023	CONFORMED PROJECT SET
8	02/22/2023	DTC RESPONSE TO COMMENTS

TO THE BEST OF THE ARCHITECT'S OR ENGINEER'S KNOWLEDGE AND ABILITY, THE PLANS AND SPECIFICATIONS COMPLY WITH THE APPLICABLE MINIMUM BUILDING CODES.
 Jed R Prest, AIA
 AR107147

Baker Barrios
 NASHVILLE
 700 12TH AVE. S., SUITE 302A
 NASHVILLE, TENNESSEE 37203
 615 921 0570
 INFO@BAKERBARRIOS.COM
 BAKERBARRIOS.COM
 AA0002981 | LC24000427

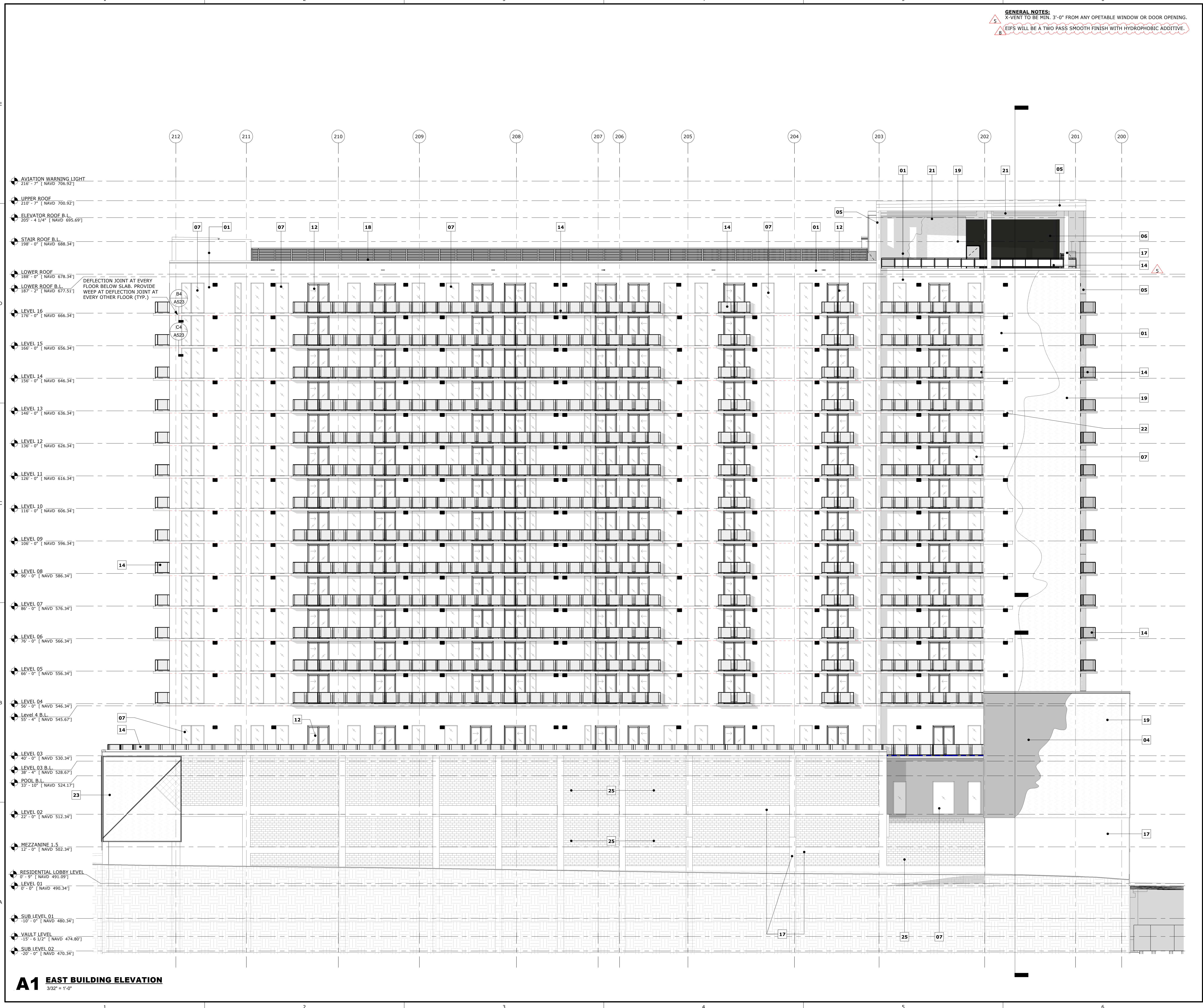
SOCIETY NASHVILLE
 915 DIVISION, LLC
 915 Division St. Nashville, TN 37203

BUILDING ELEVATION
 PROJECT NO: 200225.00 SHEET NUMBER: **A202**

VOL I

BIM 360://200225.00 - PMG 915 Division St Nashville/200225.00_AS20.rvt
 2/22/2023 4:17:11 PM

A1 EAST BUILDING ELEVATION
 3/32" = 1'-0"



GENERAL NOTES:
 X-VENT TO BE MIN. 3'-0" FROM ANY OPEABLE WINDOW OR DOOR OPENING.
 EIFS WILL BE A TWO PASS SMOOTH FINISH WITH HYDROPHOBIC ADDITIVE.

ELEVATION KEYNOTES	
MARK	DESCRIPTION
01	EIFS FINISH - LIGHT GRAY/OFF WHITE
02	42" MAJESTIC BLACK GRANITE
03	ALUCOBOND METAL PANEL - PPG UC110628F DURANAR SUNSTORM GRAPHITE GRAY
04	ALUCOBOND METAL PANEL - LIGHT GRAY
05	EIFS - MEDIUM GRAY
06	PAINT - DARK GRAY
07	WINDOW WALL - GRAY HUE GLAZING AND DARK FRAME. MIN 60% LIGHT TRANSMISSION. FRAME: PPG UC110628F DURANAR SUNSTORM GRAPHITE GRAY
08	WINDOW WALL - SOLID PANEL TO MATCH FRAME
09	RESCUE AIR EMAC MOBILE AIR CONNECTION PANEL RECESS
10	GLASS SWING DOOR - GRAY HUE GLAZING AND DARK FRAME. FRAME: PPG UC110628F DURANAR SUNSTORM GRAPHITE GRAY
11	HM SWING DOOR - PAINT TO MATCH ADJACENT WALL COLOR
12	GLASS SLIDING DOORS - GRAY HUE GLAZING AND DARK FRAME. FRAME: PPG UC110628F DURANAR SUNSTORM GRAPHITE GRAY
13	ROLLING DOOR
14	BLACK WIRE MESH RAILING 2" X 2" OPENING PATTERN
15	SIGNAGE BY OTHER. REFER TO DTC FOR MAXIMUM AREA OF SIGNAGE
16	OPENING IN GARAGE WALLS
17	STRUCTURAL ELEMENT
18	MECHANICAL EQUIPMENT SCREEN ENCLOSURE
19	ART MURAL BY OTHERS
21	ROOF OPENING WITH TRELIS
22	REVEAL
23	GARAGE SCREENING WITH CONTENT BY OTHERS
24	PAINT TO MATCH METALLIC EIFS MEDIUM GRAY
25	PAINT TO MATCH EIFS LIGHT GRAY/OFF WHITE
26	RETAINING WALL. COORDINATE WITH CIVIL AND STRUCTURE DRAWINGS
27	GLASS RAILING
28	BALCONY ENCLOSURE FOR UNITS AT POOL DECK
29	GAS REGULATOR NICHE. COORDINATE WITH CIVIL AND MEP. FINISHES WRAPS ON ALL SURFACES INCLUDING CEILING OF THE NICHE.
30	BALCONY CEILING & EDGES: SHERWIN WILLIAMS SW7063 NEBULOUS WHITE

FINISH LEGEND			
	FINISH LIGHT COLOR		VISION GLASS
	FINISH LIGHT GRAY COLOR		BREAK METAL
	FINISH MID GRAY COLOR		SPANDREL GLASS
	FINISH DARK GRAY COLOR		OPENING
	METAL PANEL FINISH DARK GRAY COLOR		LOUVER
	ART		MESH RAILING

ALL IDEAS, DECISIONS, ARRANGEMENTS AND PLANS INDICATED OR REPRESENTED BY THIS DRAWING ARE OWNED BY AND THE PROPERTY OF BAKER BARRIOS ARCHITECTS, INC. AND WHEN CREATED, ENDED, AND DEVELOPED BY OR FOR THE CLIENT. NO PART OF THIS DRAWING OR ANY INFORMATION CONTAINED HEREIN IS TO BE REPRODUCED OR TRANSMITTED IN ANY FORM OR BY ANY MEANS, ELECTRONIC OR MECHANICAL, INCLUDING PHOTOCOPYING, RECORDING, OR BY ANY INFORMATION STORAGE AND RETRIEVAL SYSTEM, WITHOUT THE WRITTEN PERMISSION OF BAKER BARRIOS ARCHITECTS, INC. REPRODUCTION HEREOF IS A CRIMINAL OFFENSE UNDER 18 U.S.C. SEC. 1030 UNAUTHORIZED DISCLOSURE MAY CONSTITUTE TRADE SECRET VIOLATION IN VIOLATION OF 18 U.S.C. 1832 AND OTHER LAWS. THE IDEAS, ARRANGEMENTS AND DECISIONS DISCLOSED HEREIN MAY BE PATENTED OR BE THE SUBJECT OF PENDING PATENT APPLICATION.

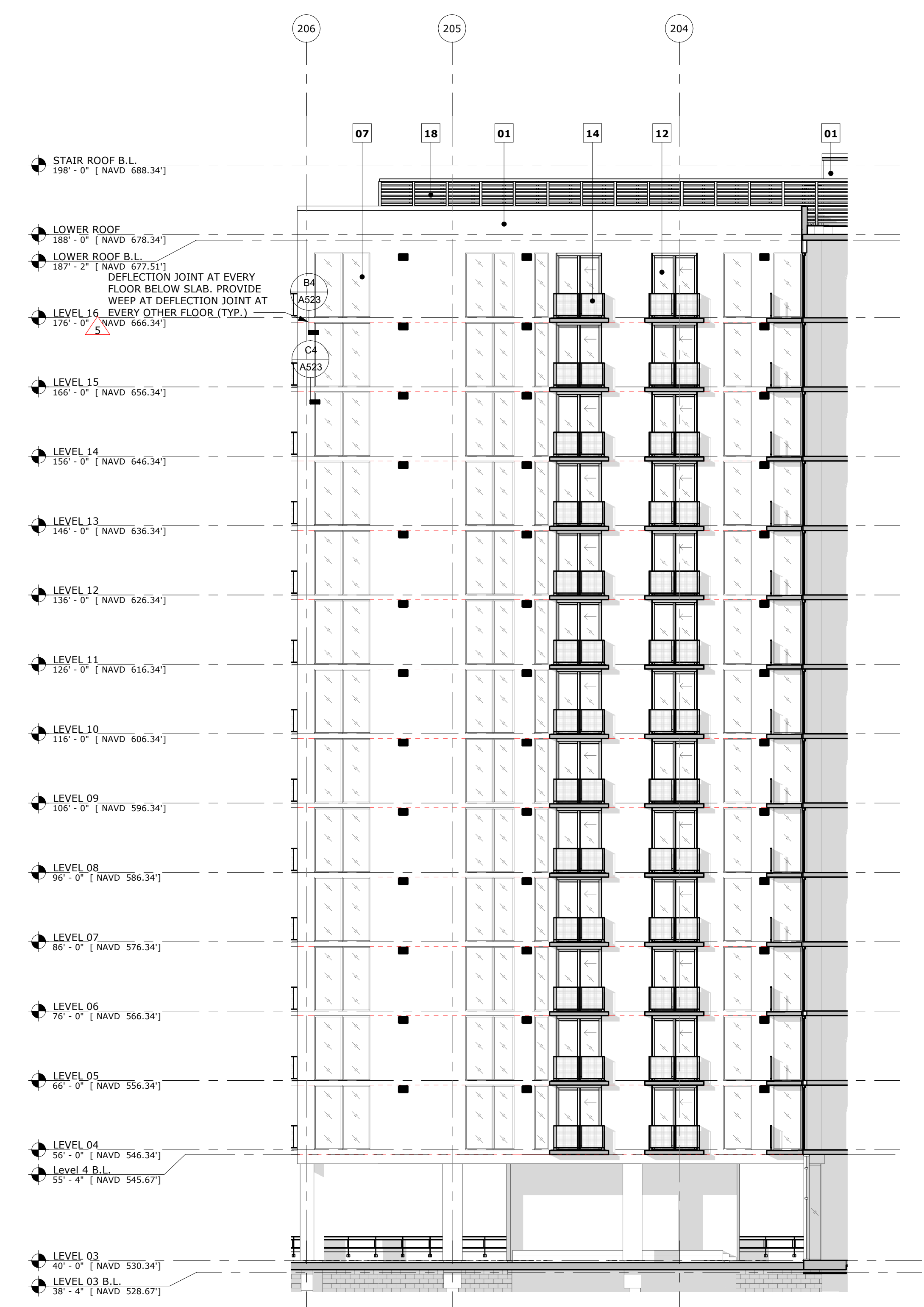
NO	DATE	REVISION/ SUBMISSION
	03/01/2022	PRICING SET
	05/16/2022	PRICING SET
3	05/30/2022	VERTICAL PERMIT
5	12/22/2022	RESPONSE TO COMMENTS
7	02/16/2023	CONFORMED PROJECT SET
8	02/22/2023	DTC RESPONSE TO COMMENTS

TO THE BEST OF THE ARCHITECTS OR ENGINEERS' KNOWLEDGE AND ABILITY, THE PLANS AND SPECIFICATIONS COMPLY WITH THE APPLICABLE MINIMUM BUILDING CODES.
 Jedd R. Prest, AIA
 AR107147

Baker Barrios
 NASHVILLE
 700 12TH AVE. S., SUITE 302A
 NASHVILLE, TENNESSEE 37203
 615 921 0570
 INFO@BAKERBARRIOS.COM
 BAKERBARRIOS.COM
 AA0002981 | LC24000427

SOCIETY NASHVILLE
 915 DIVISION, LLC
 915 Division St. Nashville, TN 37203

BUILDING ELEVATION
 PROJECT NO: 200225.00 SHEET NUMBER: A202B



A4 PARTIAL EAST BUILDING ELEVATION @ POOL DECK
 3/32" = 1'-0"

BIM 360://200225.00 - PMG 915 Division St Nashville/200225.00_A520.rvt

2/22/2023 4:17:13 PM

GENERAL NOTES:
 X-VENT TO BE MIN. 3'-0" FROM ANY OPEABLE WINDOW OR DOOR OPENING.
 EIFS WILL BE A TWO PASS SMOOTH FINISH WITH HYDROPHOBIC ADDITIVE.

ELEVATION KEYNOTES

MARK	DESCRIPTION
01	EIFS FINISH - LIGHT GRAY/OFF WHITE
02	42" MAJESTIC BLACK GRANITE
03	ALUCOBOND METAL PANEL - PPG UC110628F DURANAR SUNSTORM GRAPHITE GRAY
04	ALUCOBOND METAL PANEL - LIGHT GRAY
05	EIFS - MEDIUM GRAY
06	PAINT - DARK GRAY
07	WINDOW WALL - GRAY HUE GLAZING AND DARK FRAME. MIN 60% LIGHT TRANSMISSION. FRAME: PPG UC110628F DURANAR SUNSTORM GRAPHITE GRAY
08	WINDOW WALL - SOLID PANEL TO MATCH FRAME
09	RESCUE AIR EMAC MOBILE AIR CONNECTION PANEL RECESS
10	GLASS SWING DOOR - GRAY HUE GLAZING AND DARK FRAME. FRAME: PPG UC110628F DURANAR SUNSTORM GRAPHITE GRAY
11	HM SWING DOOR - PAINT TO MATCH ADJACENT WALL COLOR
12	GLASS SLIDING DOORS - GRAY HUE GLAZING AND DARK FRAME. FRAME: PPG UC110628F DURANAR SUNSTORM GRAPHITE GRAY
13	ROLLING DOOR
14	BLACK WIRE MESH RAILING 2" X 2" OPENING PATTERN
15	SIGNAGE BY OTHER. REFER TO DTC FOR MAXIMUM AREA OF SIGNAGE
16	OPENING IN GARAGE WALLS
17	STRUCTURAL ELEMENT
18	MECHANICAL EQUIPMENT SCREEN ENCLOSURE
19	ART MURAL BY OTHERS
21	ROOF OPENING WITH TRELIS
22	REVEAL
23	GARAGE SCREENING WITH CONTENT BY OTHERS
24	PAINT TO MATCH METALLIC EIFS MEDIUM GRAY
25	PAINT TO MATCH EIFS LIGHT GRAY/OFF WHITE
26	RETAINING WALL. COORDINATE WITH CIVIL AND STRUCTURE DRAWINGS
27	GLASS RAILING
28	BALCONY ENCLOSURE FOR UNITS AT POOL DECK
29	GAS REGULATOR NICHE. COORDINATE WITH CIVIL AND MEP. FINISHES WRAPS ON ALL SURFACES INCLUDING CEILING OF THE NICHE.
30	BALCONY CEILINGS & EDGES: SHERWIN WILLIAMS SW7063 NEBULOUS WHITE

FINISH LEGEND

	FINISH LIGHT COLOR		VISION GLASS
	FINISH LIGHT GRAY COLOR		BREAK METAL
	FINISH MID GRAY COLOR		SPANDREL GLASS
	FINISH DARK GRAY COLOR		OPENING
	METAL PANEL FINISH DARK GRAY COLOR		LOUVER
	ART		MESH RAILING

ALL IDEAS, DECISIONS, ARRANGEMENTS AND PLANS INDICATED OR REPRESENTED BY THIS DRAWING ARE OWNED BY AND THE PROPERTY OF BAKER BARRIOS ARCHITECTS, INC. AND WERE CREATED, DEVELOPED, AND DELIVERED BY US OR BY OUR LICENSEES WITH THE EXPLICIT PERMISSION OF BAKER BARRIOS ARCHITECTS, INC. ANY REPRODUCTION HEREOF BY A THIRD PARTY WITHOUT THE WRITTEN PERMISSION OF BAKER BARRIOS ARCHITECTS, INC. IS PROHIBITED. THIS DRAWING IS THE PROPERTY OF BAKER BARRIOS ARCHITECTS, INC. AND IS NOT TO BE REPRODUCED OR TRANSMITTED IN ANY FORM OR BY ANY MEANS, ELECTRONIC OR MECHANICAL, INCLUDING PHOTOCOPYING, RECORDING, OR BY ANY INFORMATION STORAGE AND RETRIEVAL SYSTEM, WITHOUT THE WRITTEN PERMISSION OF BAKER BARRIOS ARCHITECTS, INC. ANY REPRODUCTION HEREOF BY A THIRD PARTY WITHOUT THE WRITTEN PERMISSION OF BAKER BARRIOS ARCHITECTS, INC. IS PROHIBITED. THIS DRAWING IS THE PROPERTY OF BAKER BARRIOS ARCHITECTS, INC. AND IS NOT TO BE REPRODUCED OR TRANSMITTED IN ANY FORM OR BY ANY MEANS, ELECTRONIC OR MECHANICAL, INCLUDING PHOTOCOPYING, RECORDING, OR BY ANY INFORMATION STORAGE AND RETRIEVAL SYSTEM, WITHOUT THE WRITTEN PERMISSION OF BAKER BARRIOS ARCHITECTS, INC.

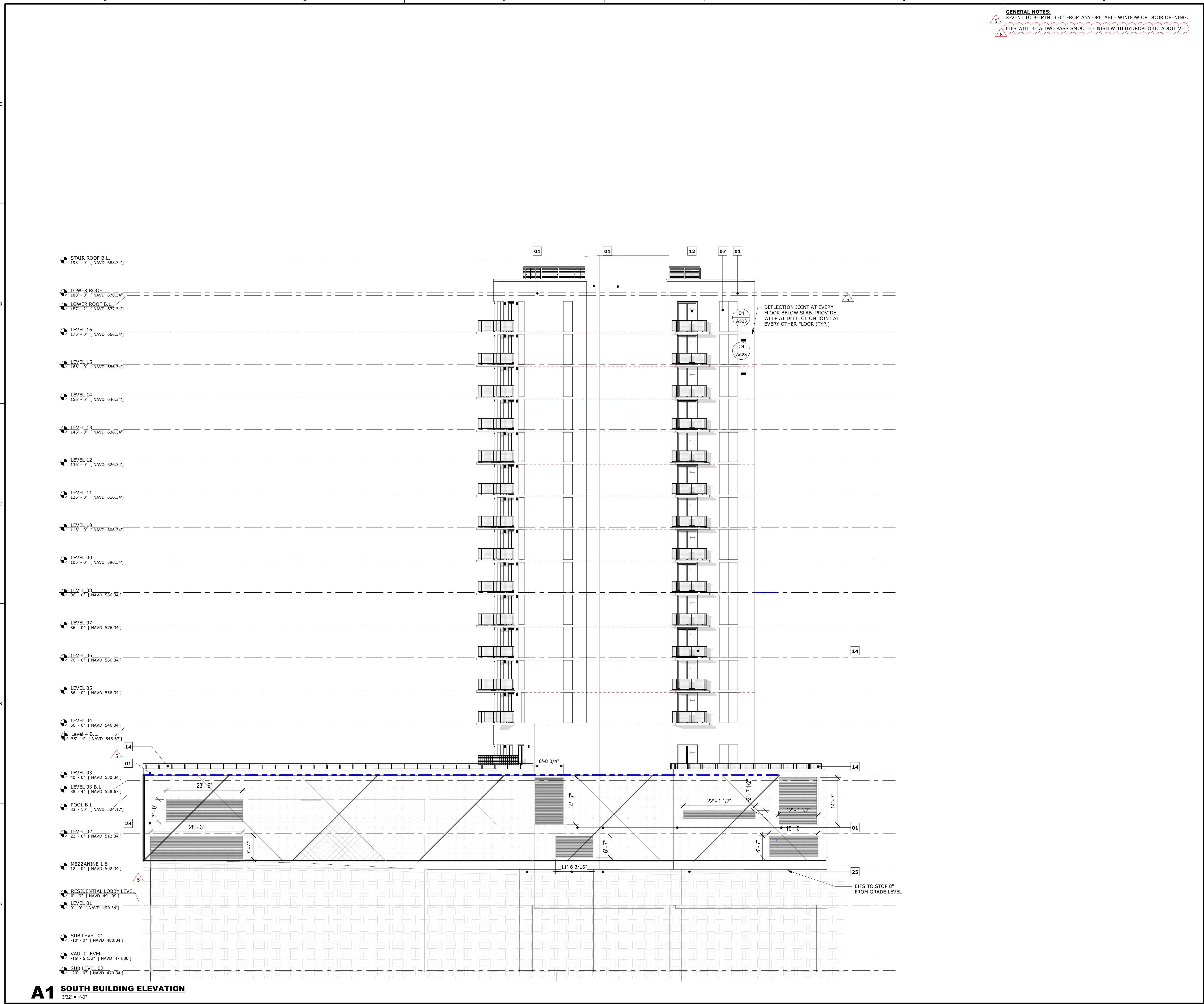
NO	DATE	REVISION/ SUBMISSION
	03/01/2022	PRICING SET
	05/16/2022	PRICING SET
3	05/30/2022	VERTICAL PERMIT
5	12/22/2022	RESPONSE TO COMMENTS
7	02/16/2023	CONFORMED PROJECT SET
8	02/22/2023	DTC RESPONSE TO COMMENTS

TO THE BEST OF THE ARCHITECTS OR ENGINEERS KNOWLEDGE AND ABILITY, THE PLANS AND SPECIFICATIONS COMPLY WITH THE APPLICABLE MINIMUM BUILDING CODES.
 JED R PREST, AIA
 AR107147

NASHVILLE
 700 12TH AVE. S., SUITE 302A
 NASHVILLE, TENNESSEE 37203
 615 921 0570
 INFO@BAKERBARRIOS.COM
 BAKERBARRIOS.COM
 AA0002981 | LC26000427

SOCIETY NASHVILLE
 915 DIVISION, LLC
 915 Division St. Nashville, TN 37203

BUILDING ELEVATION
 PROJECT NO: 200225.00 SHEET NUMBER: A203



BIM 360://200225.00 - PMG 915 Division St Nashville/200225.00_AS20.rvt

2/22/2023 4:17:21 PM

A1 SOUTH BUILDING ELEVATION
 3/32" = 1'-0"

GENERAL NOTES:
 X-VENT TO BE MIN. 3'-0" FROM ANY OPERABLE WINDOW OR DOOR OPENING.
 EIFS WILL BE A TWO PASS SMOOTH FINISH WITH HYDROPHOBIC ADDITIVE.

ELEVATION KEYNOTES

MARK	DESCRIPTION
01	EIFS FINISH - LIGHT GRAY/OFF WHITE
02	42" MAJESTIC BLACK GRANITE
03	ALUCOBOND METAL PANEL - PPG UC110628F DURANAR SUNSTORM GRAPHITE GRAY
04	ALUCOBOND METAL PANEL - LIGHT GRAY
05	EIFS - MEDIUM GRAY
06	PAINT - DARK GRAY
07	WINDOW WALL - GRAY HUE GLAZING AND DARK FRAME. MIN 60% LIGHT TRANSMISSION. FRAME: PPG UC110628F DURANAR SUNSTORM GRAPHITE GRAY
08	WINDOW WALL - SOLID PANEL TO MATCH FRAME
09	RESCUE AIR EMAC MOBILE AIR CONNECTION PANEL RECESS
10	GLASS SWING DOOR - GRAY HUE GLAZING AND DARK FRAME. FRAME: PPG UC110628F DURANAR SUNSTORM GRAPHITE GRAY
11	HM SWING DOOR - PAINT TO MATCH ADJACENT WALL COLOR
12	GLASS SLIDING DOORS - GRAY HUE GLAZING AND DARK FRAME. FRAME: PPG UC110628F DURANAR SUNSTORM GRAPHITE GRAY
13	ROLLING DOOR
14	BLACK WIRE MESH RAILING 2" X 2" OPENING PATTERN
15	SIGNAGE BY OTHER. REFER TO DTC FOR MAXIMUM AREA OF SIGNAGE
16	OPENING IN GARAGE WALLS
17	STRUCTURAL ELEMENT
18	MECHANICAL EQUIPMENT SCREEN ENCLOSURE
19	ART MURAL BY OTHERS
21	ROOF OPENING WITH TRELIS
22	REVEAL
23	GARAGE SCREENING WITH CONTENT BY OTHERS
24	PAINT TO MATCH METALLIC EIFS MEDIUM GRAY
25	PAINT TO MATCH EIFS LIGHT GRAY/OFF WHITE
26	RETAINING WALL. COORDINATE WITH CIVIL AND STRUCTURE DRAWINGS
27	GLASS RAILING
28	BALCONY ENCLOSURE FOR UNITS AT POOL DECK
29	GAS REGULATOR NICHE. COORDINATE WITH CIVIL AND MEP. FINISHES WORKS ON ALL SURFACES INCLUDING CEILING OF THE NICHE.
30	BALCONY CEILING & EDGES: SHERWIN WILLIAMS SW7063 NEBULOUS WHITE

FINISH LEGEND

	FINISH LIGHT GRAY COLOR		VISION GLASS
	FINISH LIGHT GRAY COLOR		BREAK METAL
	FINISH MID GRAY COLOR		SPANDREL GLASS
	FINISH DARK GRAY COLOR		OPENING
	METAL PANEL FINISH DARK GRAY COLOR		LOUVER
	ART		MESH RAILING

ALL IDEAS, DECISIONS, ARRANGEMENTS AND PLANS INDICATED OR REPRESENTED BY THIS DRAWING ARE OWNED BY AND THE PROPERTY OF BAKER BARRIOS ARCHITECTS, INC. AND SHALL BE KEPT CONFIDENTIAL AND NOT REPRODUCED OR PLANS SHALL BE USED BY OR DISCLOSED TO ANY PERSON, FIRM, OR CORPORATION FOR ANY PURPOSE WITHOUT THE WRITTEN PERMISSION OF BAKER BARRIOS ARCHITECTS, INC. ANY REPRODUCTION HEREOF IS A VIOLATION OF FEDERAL AND STATE PATENT LAWS. THE PATENT APPLICATIONS AND DESIGN DISCLOSURES HEREIN MAY BE PATENTED OR BE THE SUBJECT OF PENDING PATENT APPLICATIONS.

NO	DATE	REVISION/ SUBMISSION
	03/01/2022	PRICING SET
	05/16/2022	PRICING SET
3	05/30/2022	VERTICAL PERMIT
5	12/22/2022	RESPONSE TO COMMENTS
7	02/16/2023	CONFORMED PROJECT SET
8	02/22/2023	DTC RESPONSE TO COMMENTS

TO THE BEST OF THE ARCHITECTS OR ENGINEERS KNOWLEDGE AND ABILITY, THE PLANS AND SPECIFICATIONS COMPLY WITH THE APPLICABLE MINIMUM BUILDING CODES.
 Jedd R. Prest, AIA
 AR107147

Baker Barrios
 NASHVILLE
 700 12TH AVE. S., SUITE 302A
 NASHVILLE, TENNESSEE 37203
 615 921 0570
 INFO@BAKERBARRIOS.COM
 BAKERBARRIOS.COM
 AA0002981 | LC24000427

SOCIETY NASHVILLE
 915 DIVISION, LLC
 915 Division St. Nashville, TN 37203

BUILDING ELEVATION
 PROJECT NO: 200225.00 SHEET NUMBER: A203B



A2 PARTIAL SOUTH BUILDING ELEVATION @ POOL DECK
 3/32" = 1'-0"



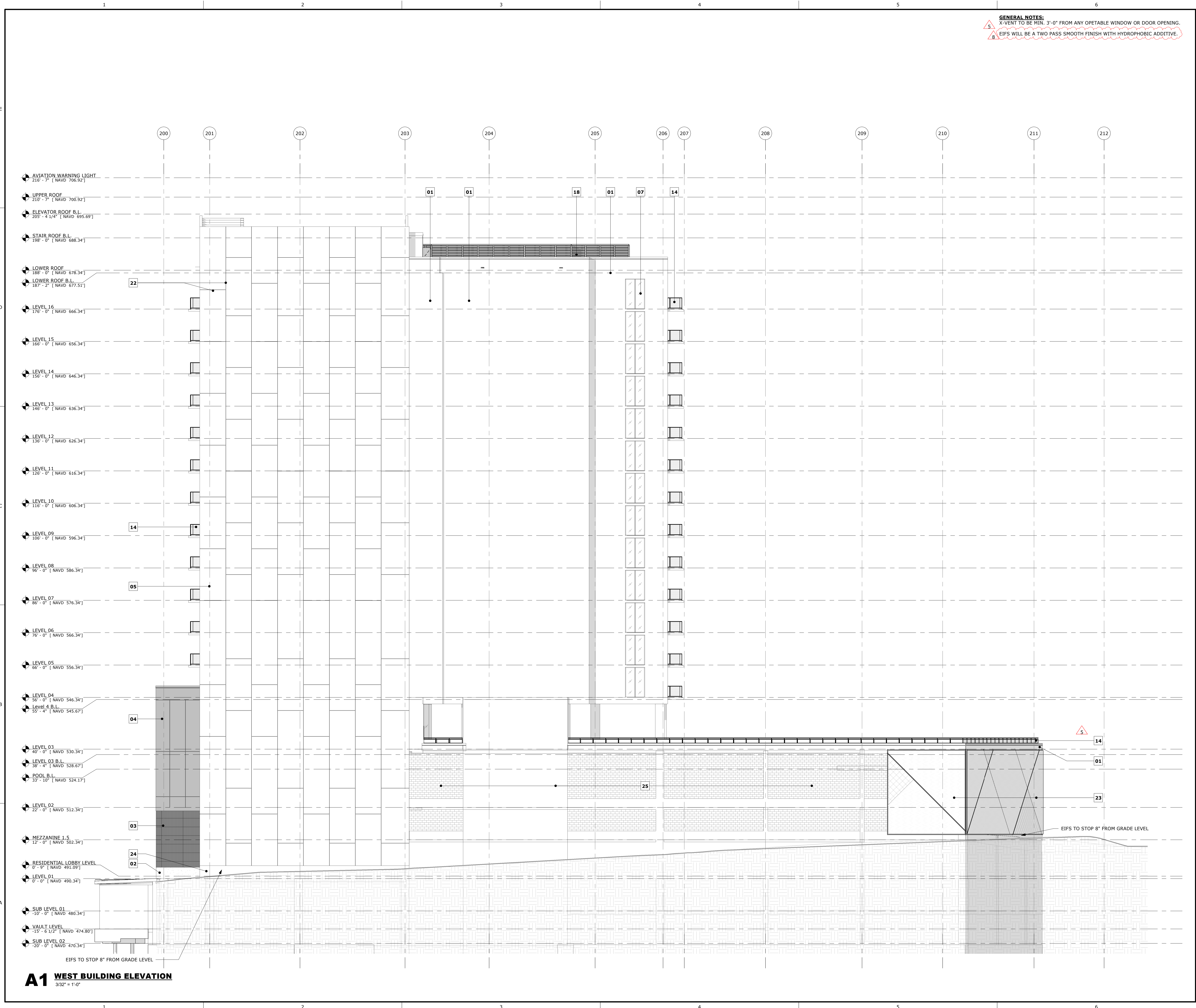
A5 PARTIAL SOUTH ELEVATION @ POOL DECK.
 3/32" = 1'-0"

BIM 360://200225.00 - PMG 915 Division St Nashville/200225.00_A520.rvt

2/22/2023 4:17:24 PM

BIM 360://200225.00 - PMG 915 Division St Nashville/200225.00_AS20.rvt

2/22/2023 4:17:40 PM



GENERAL NOTES:
 X-VENT TO BE MIN. 3'-0" FROM ANY OPERABLE WINDOW OR DOOR OPENING.
 EIFS WILL BE A TWO PASS SMOOTH FINISH WITH HYDROPHOBIC ADDITIVE.

ELEVATION KEYNOTES	
MARK	DESCRIPTION
01	EIFS FINISH - LIGHT GRAY/OFF WHITE
02	42" MAJESTIC BLACK GRANITE
03	ALUCOBOND METAL PANEL - PPG UC110628F DURANAR SUNSTORM GRAPHITE GRAY
04	ALUCOBOND METAL PANEL - LIGHT GRAY
05	EIFS - MEDIUM GRAY
06	PAINT - DARK GRAY
07	WINDOW WALL - GRAY HUE GLAZING AND DARK FRAME. MIN 60% LIGHT TRANSMISSION. FRAME: PPG UC110628F DURANAR SUNSTORM GRAPHITE GRAY
08	WINDOW WALL - SOLID PANEL TO MATCH FRAME
09	RESCUE AIR EMAC MOBILE AIR CONNECTION PANEL RECESS
10	GLASS SWING DOOR - GRAY HUE GLAZING AND DARK FRAME. FRAME: PPG UC110628F DURANAR SUNSTORM GRAPHITE GRAY
11	HM SWING DOOR - PAINT TO MATCH ADJACENT WALL COLOR
12	GLASS SLIDING DOORS - GRAY HUE GLAZING AND DARK FRAME. FRAME: PPG UC110628F DURANAR SUNSTORM GRAPHITE GRAY
13	ROLLING DOOR
14	BLACK WIRE MESH RAILING 2" X 2" OPENING PATTERN
15	SIGNAGE BY OTHER. REFER TO DTC FOR MAXIMUM AREA OF SIGNAGE
16	OPENING IN GARAGE WALLS
17	STRUCTURAL ELEMENT
18	MECHANICAL EQUIPMENT SCREEN ENCLOSURE
19	ART MURAL BY OTHERS
21	ROOF OPENING WITH TRELIS
22	REVEAL
23	GARAGE SCREENING WITH CONTENT BY OTHERS
24	PAINT TO MATCH METALLIC EIFS MEDIUM GRAY
25	PAINT TO MATCH EIFS LIGHT GRAY/OFF WHITE
26	RETAINING WALL. COORDINATE WITH CIVIL AND STRUCTURE DRAWINGS
27	GLASS RAILING
28	BALCONY ENCLOSURE FOR UNITS AT POOL DECK
29	GAS REGULATOR NICHE. COORDINATE WITH CIVIL AND MEP FINISHES WORKS ON ALL SURFACES INCLUDING CEILING OF THE NICHE.
30	BALCONY CEILINGS & EDGES: SHERWIN WILLIAMS SW7063 NEBULOUS WHITE

FINISH LEGEND			
	FINISH LIGHT COLOR		VISION GLASS
	FINISH LIGHT GRAY COLOR		BREAK METAL
	FINISH MID GRAY COLOR		SPANDREL GLASS
	FINISH DARK GRAY COLOR		OPENING
	METAL PANEL FINISH DARK GRAY COLOR		LOUVER
	ART		MESH RAILING

ALL IDEAS, DECISIONS, ARRANGEMENTS AND PLANS INDICATED OR REPRESENTED BY THIS DRAWING ARE OWNED BY AND THE PROPERTY OF BAKER BARRIOS ARCHITECTS, INC. AND WERE CREATED, DEVELOPED, AND DEVELOPED BY BAKER BARRIOS ARCHITECTS, INC. FOR THE PROJECT HEREIN. NO PART OF THIS DRAWING OR ANY INFORMATION CONTAINED HEREIN SHALL BE REPRODUCED OR TRANSMITTED IN ANY FORM OR BY ANY MEANS, ELECTRONIC OR MECHANICAL, INCLUDING PHOTOCOPYING, RECORDING, OR BY ANY INFORMATION STORAGE AND RETRIEVAL SYSTEM, WITHOUT THE WRITTEN PERMISSION OF BAKER BARRIOS ARCHITECTS, INC. ANY REPRODUCTION HEREOF IS A VIOLATION OF FEDERAL AND STATE LAWS. ANY REPRODUCTION OF THIS DRAWING FOR ANY PURPOSE WITHOUT THE WRITTEN PERMISSION OF BAKER BARRIOS ARCHITECTS, INC. IS PROHIBITED. THE USER OF THIS DRAWING SHALL BE RESPONSIBLE FOR OBTAINING ALL NECESSARY PERMITS AND APPROVALS FROM THE APPROPRIATE AGENCIES. THE USER OF THIS DRAWING SHALL BE RESPONSIBLE FOR OBTAINING ALL NECESSARY PERMITS AND APPROVALS FROM THE APPROPRIATE AGENCIES. THE USER OF THIS DRAWING SHALL BE RESPONSIBLE FOR OBTAINING ALL NECESSARY PERMITS AND APPROVALS FROM THE APPROPRIATE AGENCIES.

NO	DATE	REVISION/ SUBMISSION
	03/01/2022	PRICING SET
	05/16/2022	PRICING SET
3	05/30/2022	VERTICAL PERMIT
5	12/22/2022	RESPONSE TO COMMENTS
7	02/16/2023	CONFORMED PROJECT SET
8	02/22/2023	DTC RESPONSE TO COMMENTS

TO THE BEST OF THE ARCHITECTS OR ENGINEERS KNOWLEDGE AND ABILITY, THE PLANS AND SPECIFICATIONS COMPLY WITH THE APPLICABLE MINIMUM BUILDING CODES.
 Jedd R. Prest, AIA
 AR107147

Baker Barrios
 NASHVILLE
 700 12TH AVE. S., SUITE 302A
 NASHVILLE, TENNESSEE 37203
 615 921 0570
 INFO@BAKERBARRIOS.COM
 BAKERBARRIOS.COM
 AA0002981 | LC26000427

SOCIETY NASHVILLE
 915 DIVISION, LLC
 915 Division St. Nashville, TN 37203

BUILDING ELEVATION
 PROJECT NO: 200225.00 SHEET NUMBER: A204

VOL I

A1 WEST BUILDING ELEVATION
 3/32" = 1'-0"

GENERAL NOTES:
 X-VENT TO BE MIN. 3'-0" FROM ANY OPERABLE WINDOW OR DOOR OPENING.
 EIFS WILL BE A TWO PASS SMOOTH FINISH WITH HYDROPHOBIC ADDITIVE.

ELEVATION KEYNOTES	
MARK	DESCRIPTION
01	EIFS FINISH - LIGHT GRAY/OFF WHITE
02	42" MAJESTIC BLACK GRANITE
03	ALUCOBOND METAL PANEL - PPG UC110628F DURANAR SUNSTORM GRAPHITE GRAY
04	ALUCOBOND METAL PANEL - LIGHT GRAY
05	EIFS - MEDIUM GRAY
06	PAINT - DARK GRAY
07	WINDOW WALL - GRAY HUE GLAZING AND DARK FRAME. MIN 60% LIGHT TRANSMISSION. FRAME: PPG UC110628F DURANAR SUNSTORM GRAPHITE GRAY
08	WINDOW WALL - SOLID PANEL TO MATCH FRAME
09	RESCUE AIR EMAC MOBILE AIR CONNECTION PANEL RECESS
10	GLASS SWING DOOR - GRAY HUE GLAZING AND DARK FRAME. FRAME: PPG UC110628F DURANAR SUNSTORM GRAPHITE GRAY
11	HM SWING DOOR - PAINT TO MATCH ADJACENT WALL COLOR
12	GLASS SLIDING DOORS - GRAY HUE GLAZING AND DARK FRAME. FRAME: PPG UC110628F DURANAR SUNSTORM GRAPHITE GRAY
13	ROLLING DOOR
14	BLACK WIRE MESH RAILING 2" X 2" OPENING PATTERN
15	SIGNAGE BY OTHER. REFER TO DTC FOR MAXIMUM AREA OF SIGNAGE
16	OPENING IN GARAGE WALLS
17	STRUCTURAL ELEMENT
18	MECHANICAL EQUIPMENT SCREEN ENCLOSURE
19	ART MURAL BY OTHERS
21	ROOF OPENING WITH TRELIS
22	REVEAL
23	GARAGE SCREENING WITH CONTENT BY OTHERS
24	PAINT TO MATCH METALLIC EIFS MEDIUM GRAY
25	PAINT TO MATCH EIFS LIGHT GRAY/OFF WHITE
26	RETAINING WALL. COORDINATE WITH CIVIL AND STRUCTURE DRAWINGS
27	GLASS RAILING
28	BALCONY ENCLOSURE FOR UNITS AT POOL DECK
29	GAS REGULATOR NICHE. COORDINATE WITH CIVIL AND MEP. FINISHES WORKS ON ALL SURFACES INCLUDING CEILING OF THE NICHE.
30	BALCONY CEILING & EDGES: SHERWIN WILLIAMS SW7063 NEBULOUS WHITE

FINISH LEGEND	
	VISION GLASS
	BREAK METAL
	SPANDREL GLASS
	OPENING
	LOUVER
	MESH RAILING

ALL IDEAS, DECISIONS, ARRANGEMENTS AND PLANS INDICATED OR REPRESENTED BY THIS DRAWING ARE OWNED BY AND THE PROPERTY OF BAKER BARRIOS ARCHITECTS, INC. AND SHALL BE KEPT CONFIDENTIAL. NO PART OF THIS DRAWING OR PLANS SHALL BE USED BY OR DISCLOSED TO ANY PERSON, FIRM, OR CORPORATION FOR ANY PURPOSE WITHOUT THE WRITTEN PERMISSION OF BAKER BARRIOS ARCHITECTS, INC. REPRODUCTION HEREOF IS A CRIMINAL OFFENSE UNDER 18 U.S.C. SEC. 1030 UNAUTHORIZED DISCLOSURE MAY CONSTITUTE TRADE SECRET VIOLATION IN VIOLATION OF 18 U.S.C. 1832 AND OTHER LAWS. THE DESIGN, ARRANGEMENTS AND DECISIONS DISCLOSED HEREIN MAY BE PATENTED OR BE THE SUBJECT OF PENDING PATENT APPLICATIONS.

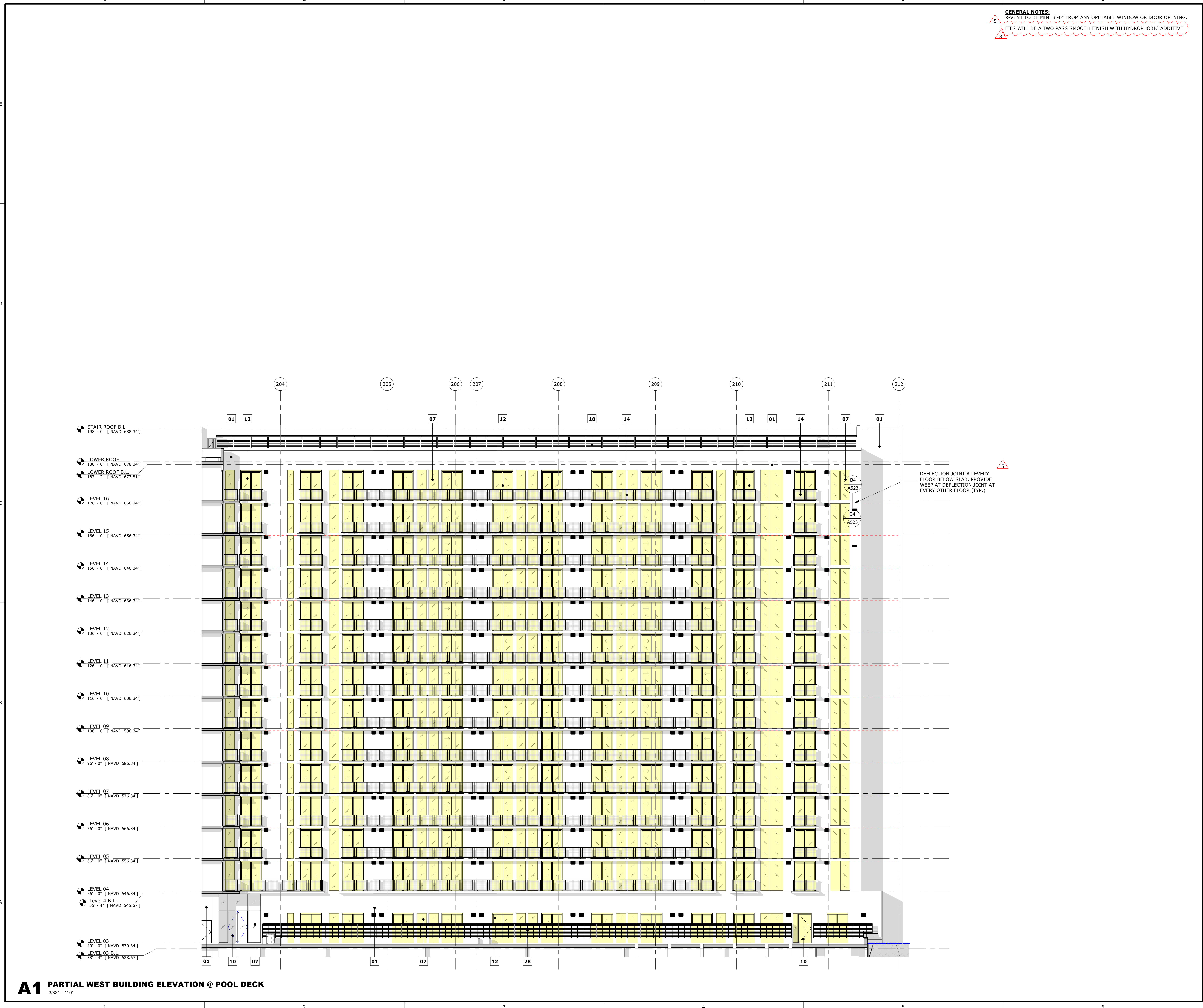
NO	DATE	REVISION / SUBMISSION
	03/01/2022	PRICING SET
	05/16/2022	PRICING SET
3	05/30/2022	VERTICAL PERMIT
5	12/22/2022	RESPONSE TO COMMENTS
7	02/16/2023	CONFORMED PROJECT SET
8	02/22/2023	DTC RESPONSE TO COMMENTS

TO THE BEST OF THE ARCHITECT'S OR ENGINEER'S KNOWLEDGE AND ABILITY, THE PLANS AND SPECIFICATIONS COMPLY WITH THE APPLICABLE MINIMUM BUILDING CODES.
 Jedd R. Prest, AIA
 AR107147

Baker Barrios
 NASHVILLE
 700 12TH AVE. S., SUITE 302A
 NASHVILLE, TENNESSEE 37203
 615 921 0570
 INFO@BAKERBARRIOS.COM
 BAKERBARRIOS.COM
 AA0002981 | LC26000427

SOCIETY NASHVILLE
 915 DIVISION, LLC
 915 Division St. Nashville, TN 37203

BUILDING ELEVATION
 PROJECT NO: 200225.00 SHEET NUMBER: **A204B**



A1 PARTIAL WEST BUILDING ELEVATION @ POOL DECK
 3/32" = 1'-0"

BIM 360://200225.00 - PMG 915 Division St Nashville/200225.00_AS20.rvt

2/22/2023 4:17:47 PM

