

METROPOLITAN GOVERNMENT OF NASHVILLE AND DAVIDSON COUNTY, TENNESSEE

NATIONS NEIGHBORWAYS BIKEWAY IMPROVEMENTS

APRIL, 2023



LDA ENGINEERING

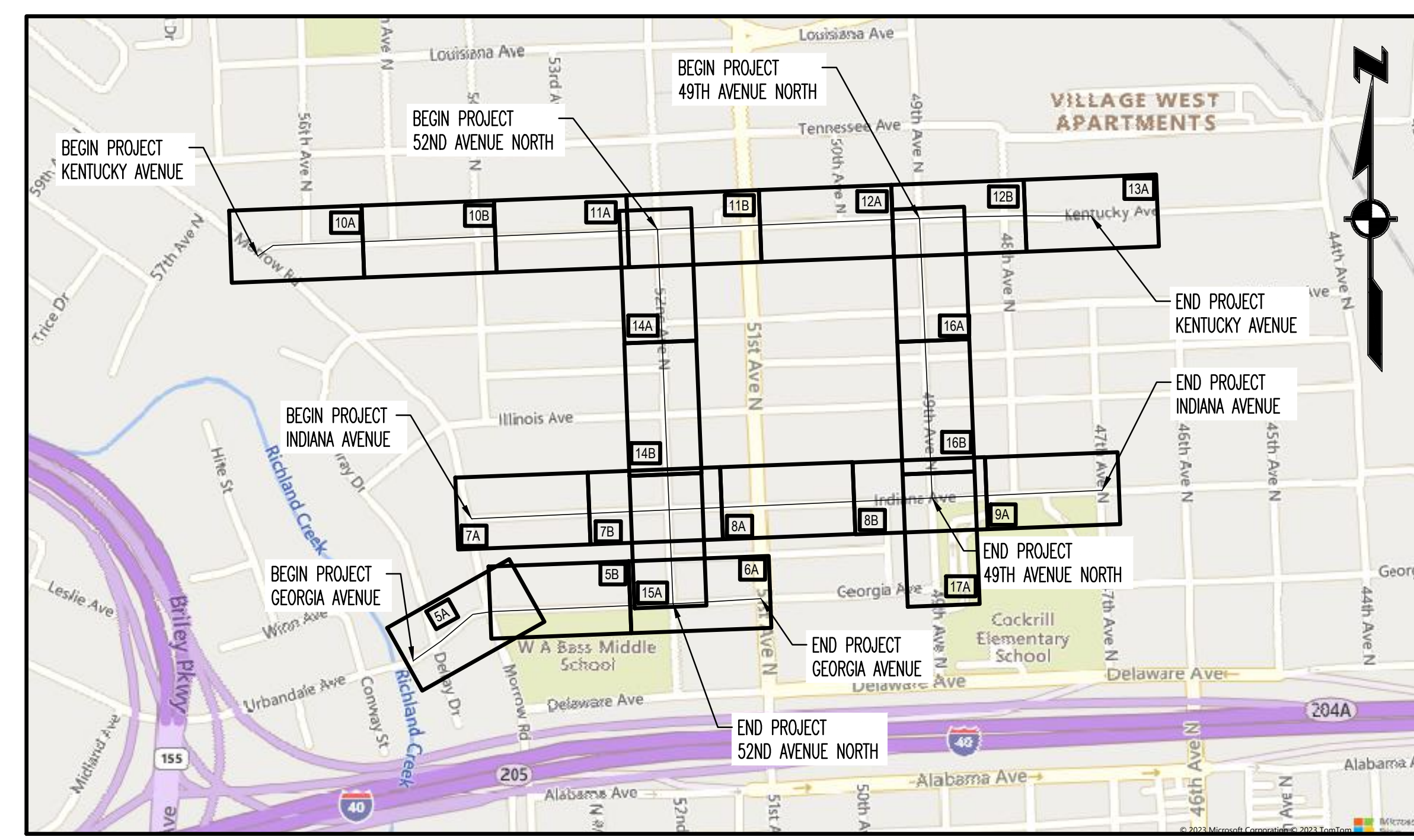
REV	DATE	REVISION DESCRIPTION

METROPOLITAN GOVERNMENT OF NASHVILLE
AND DAVIDSON COUNTY, TENNESSEE
NATIONS NEIGHBORWAYS BIKEWAY IMPROVEMENTS

PRELIMINARY

PROJECT NUMBER:	MET001
DATE:	04-2023
SCALE:	
DRAWN BY:	JWC
DESIGNED BY:	NHP

SHEET TITLE:
COVER SHEET



LOCATION MAP
SCALE: 1"=500'

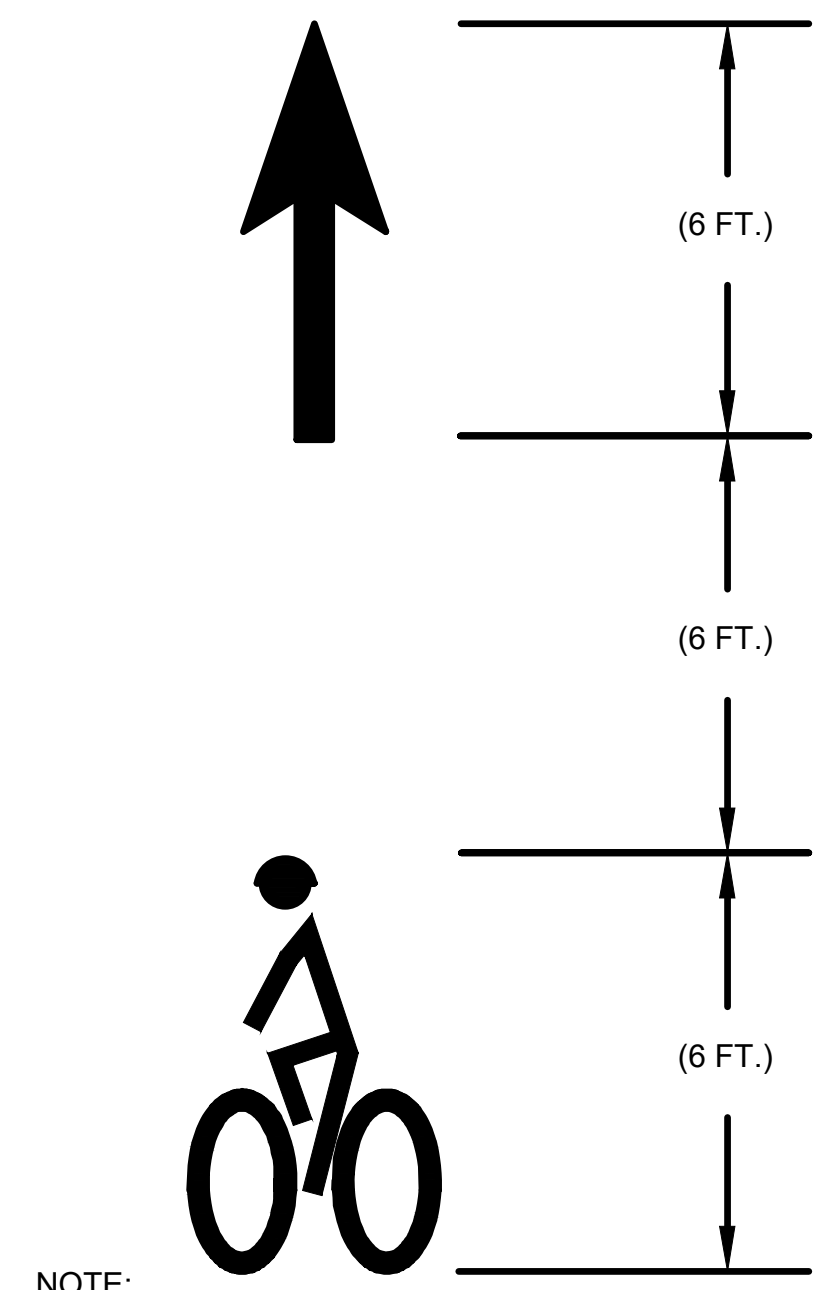
DRAWING INDEX

1. COVER SHEET
2. DETAILS
3. DETAILS
4. DETAILS
5. PROPOSED SITE LAYOUT
6. PROPOSED SITE LAYOUT
7. PROPOSED SITE LAYOUT
8. PROPOSED SITE LAYOUT
9. PROPOSED SITE LAYOUT
10. PROPOSED SITE LAYOUT
11. PROPOSED SITE LAYOUT
12. PROPOSED SITE LAYOUT
13. PROPOSED SITE LAYOUT
14. PROPOSED SITE LAYOUT
15. PROPOSED SITE LAYOUT
16. PROPOSED SITE LAYOUT
17. PROPOSED SITE LAYOUT

C:\MET002\BREVIEWS\MET002_020_NATIONS_NEIGHBORWAYS_CONCEPTUAL_DESIGN\SHEET_FILES\MET002_GEORAVIAE_01_COVER.DWG, 4/17/2023 8:47 PM, NATE PICKERING



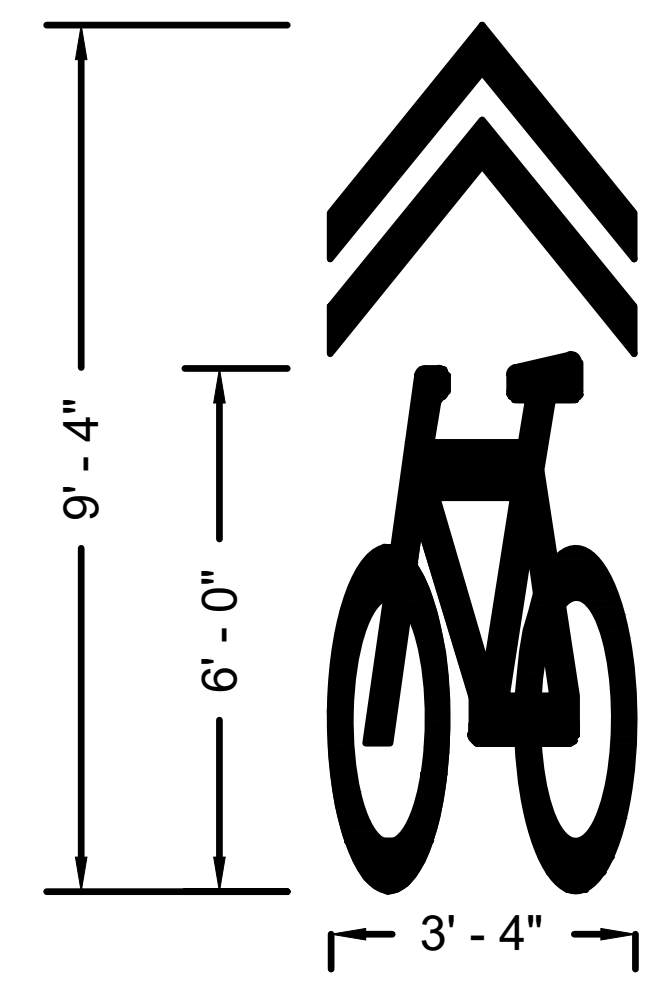
LDA ENGINEERING
402 BNA DRIVE SUITE 403
NASHVILLE, TENNESSEE 37217
TELEPHONE: 877-754-8254
FAX: 865-573-1352



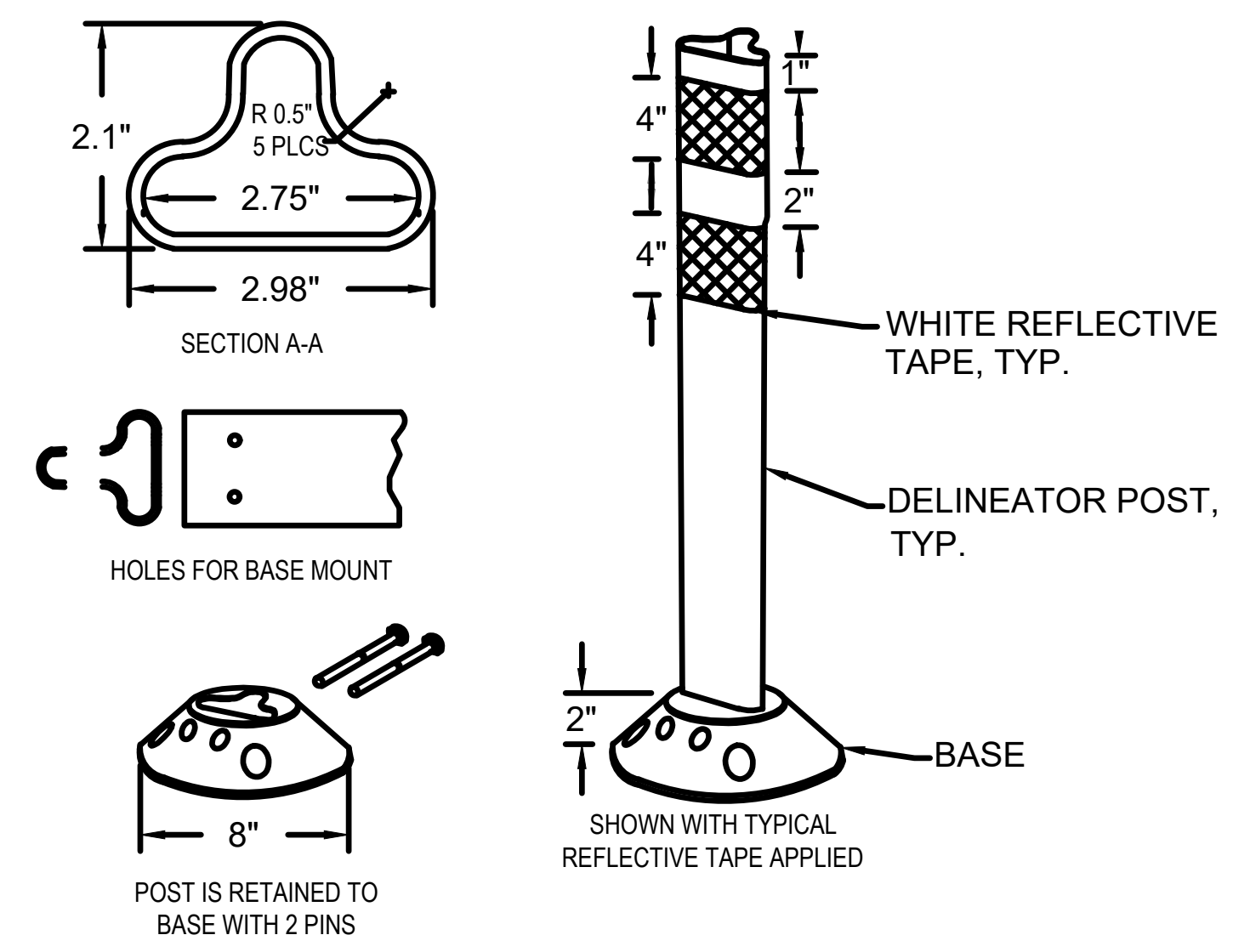
NOTE:
 • REFER TO MUTCD 2009 EDITION PART 9 FIGURE 9C-3 WORD, SYMBOL, AND ARROW PAVEMENT MARKINGS FOR BICYCLE LANES. REDUCED SIZE MARKINGS TO BE USED WHERE REQUIRED IN THE FIELD, SCALE AS NEEDED.

BIKE LANE PAVEMENT MARKING
DETAIL
 N.T.S.

NOTE:
 • REFER TO MUTCD 2009 EDITION PART 9 FIGURE 9C-3 WORD, SYMBOL, AND ARROW PAVEMENT MARKINGS FOR BICYCLE LANE. REDUCED SIZE MARKINGS TO BE USED WHERE REQUIRED IN THE FIELD. REFER TO FIGURE 9C-9 FOR SHARED LANE MARKINGS.

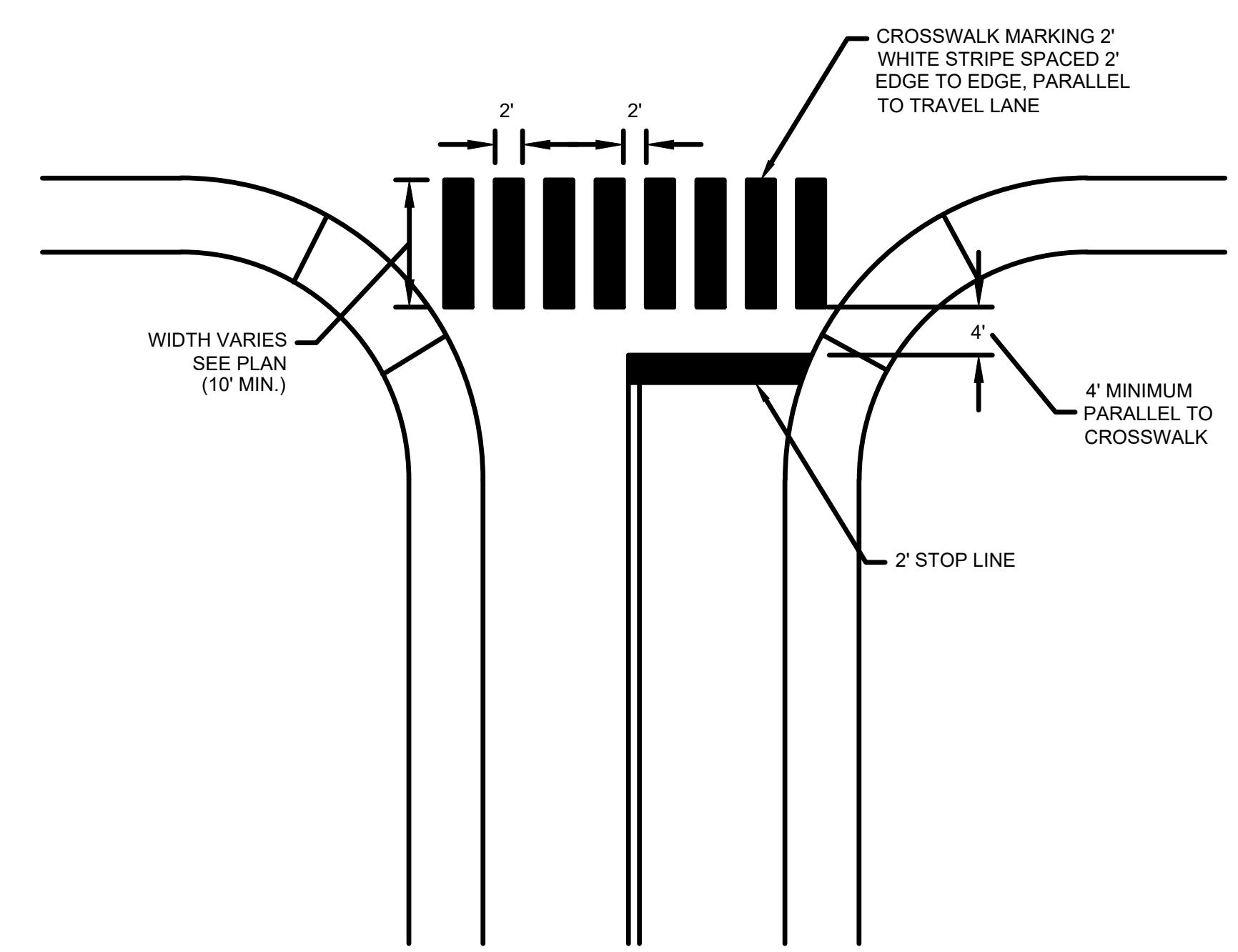


SHARROW MARKING
DETAIL
 N.T.S.

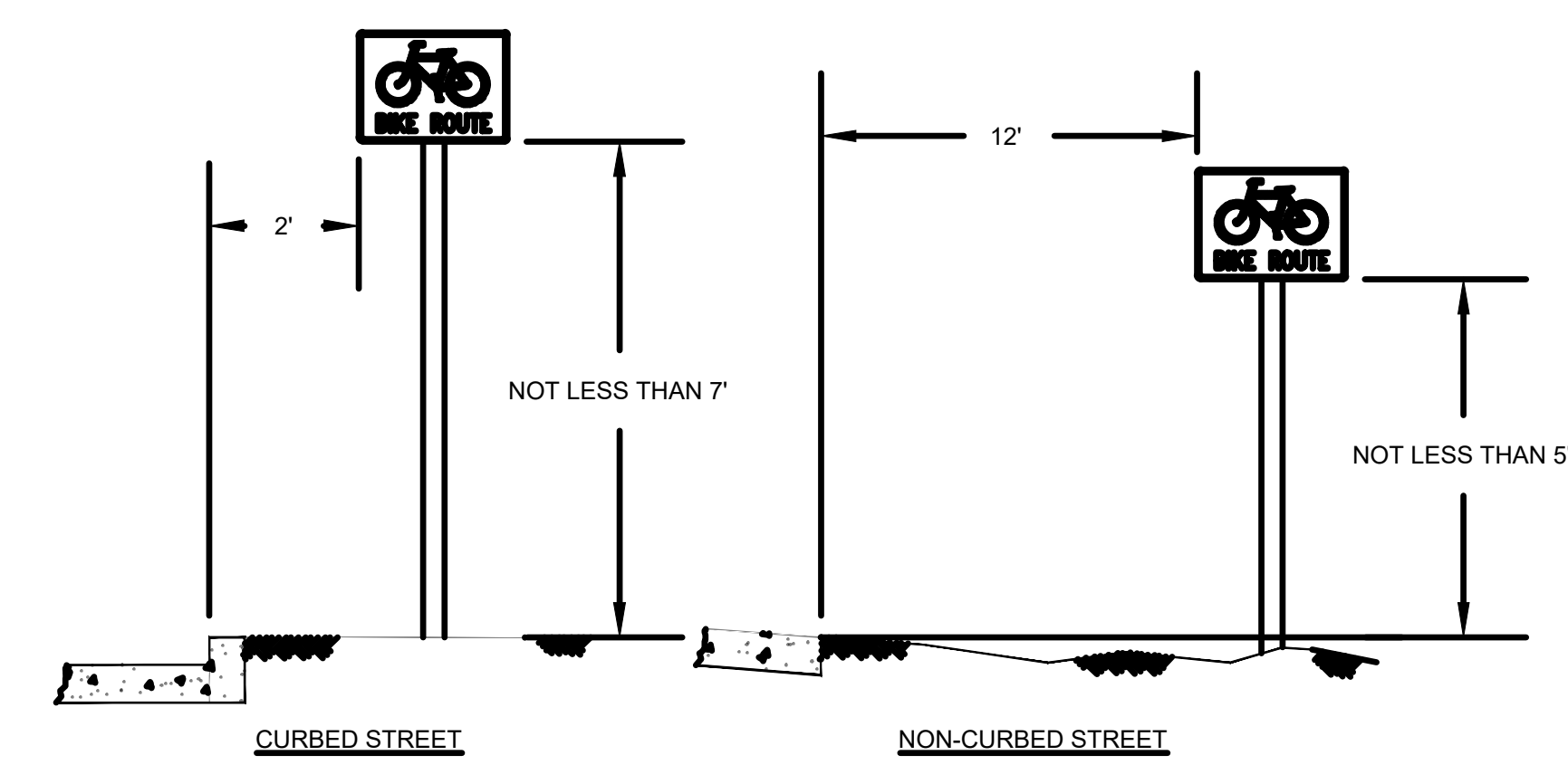


NOTES:
 • INSTALLATION TO BE COMPLETED IN ACCORDANCE WITH MANUFACTURER'S SPECIFICATIONS.
 • DIMENSIONS, MATERIALS, AND ATTACHMENTS MAY VARY BETWEEN MANUFACTURERS.
 • COLOR OF POST SHALL MATCH COLOR OF APPLICABLE EDGE LINE AS NOTED IN PLANS.
 • SUGGESTED MANUFACTURERS INCLUDE: PEXCO DAVIDSON TRAFFIC CONTROL, SUPERIOR TRAFFIC CONTROL OR APPROVED BY METRO REPRESENTATIVE
 • DELINEATORS SHALL BE SPACED 20' CENTER-TO-CENTER IN THE PLANS CONTRACTOR TO COORDINATE WITH MPW PRIOR TO INSTALLATION.

36" FLEXIBLE DELINEATOR POST
DETAIL
 N.T.S.



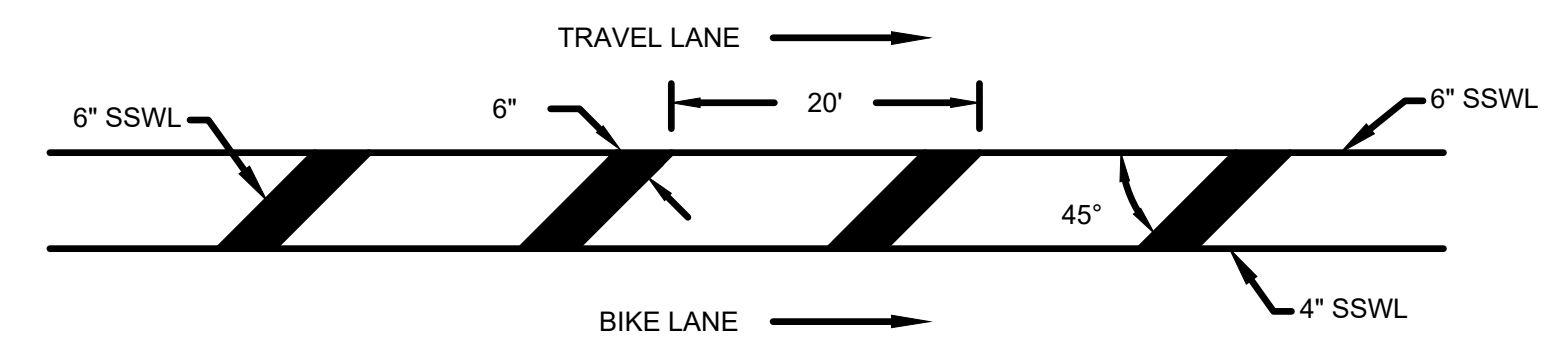
TYPICAL STOP LINE PLACEMENT AND CROSSWALK
MARKINGS
 N.T.S.



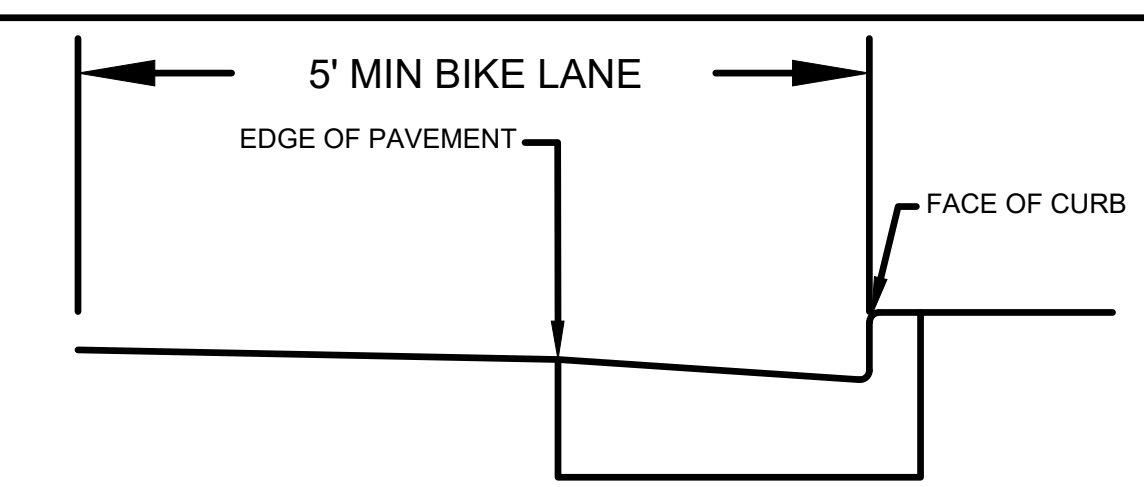
HEIGHT AND LATERAL LOCATION OF SIGNS - TYPICAL INSTALLATIONS

SIGN INSTALLATION NOTES:
 • ALL SIGNS SHALL BE INSTALLED IN THE APPROXIMATE LOCATIONS SHOWN ON PLAN SHEETS. ANY DEVIATION MUST BE APPROVED BY THE METROPOLITAN DEPARTMENT OF PUBLIC WORKS.
 • SIGNS SHALL BE INSTALLED IN STRICT ACCORDANCE WITH THE CURRENT EDITION OF THE MANUAL ON UNIFORM CONTROL DEVICES, AND SHALL HAVE THE HEIGHT AND CLEARANCE SPECIFICATIONS SHOWN ON THIS SHEET.
 • ALL SIGNING EQUIPMENT AND INSTALLATION PROCEDURES SHALL COMPLY WITH THE T.D.O.T. STANDARD SPECIFICATIONS FOR ROAD AND BRIDGE CONSTRUCTION, SECTION 713 - HIGHWAY SIGNING, AND WITH THE SPECIFICATIONS OF METROPOLITAN NASHVILLE AND DAVIDSON COUNTY.

HEIGHT AND LATERAL LOCATION OF SIGNS - TYPICAL
INSTALLATIONS
 N.T.S.



BIKE LANE BUFFER PAVEMENT MARKINGS
 N.T.S.



NOTE:
 • LATERAL PAVEMENT MARKING DIMENSIONS ARE TYPICALLY MEASURED TO AN ADJACENT FACE OF CURB OR TO THE CENTERLINE OF AN ADJACENT PAVEMENT MARKING AS SHOWN IN THE PLANS.

TYPICAL LATERAL STRIPING DIMENSIONS
 N.T.S.



REV	DATE	REVISION DESCRIPTION

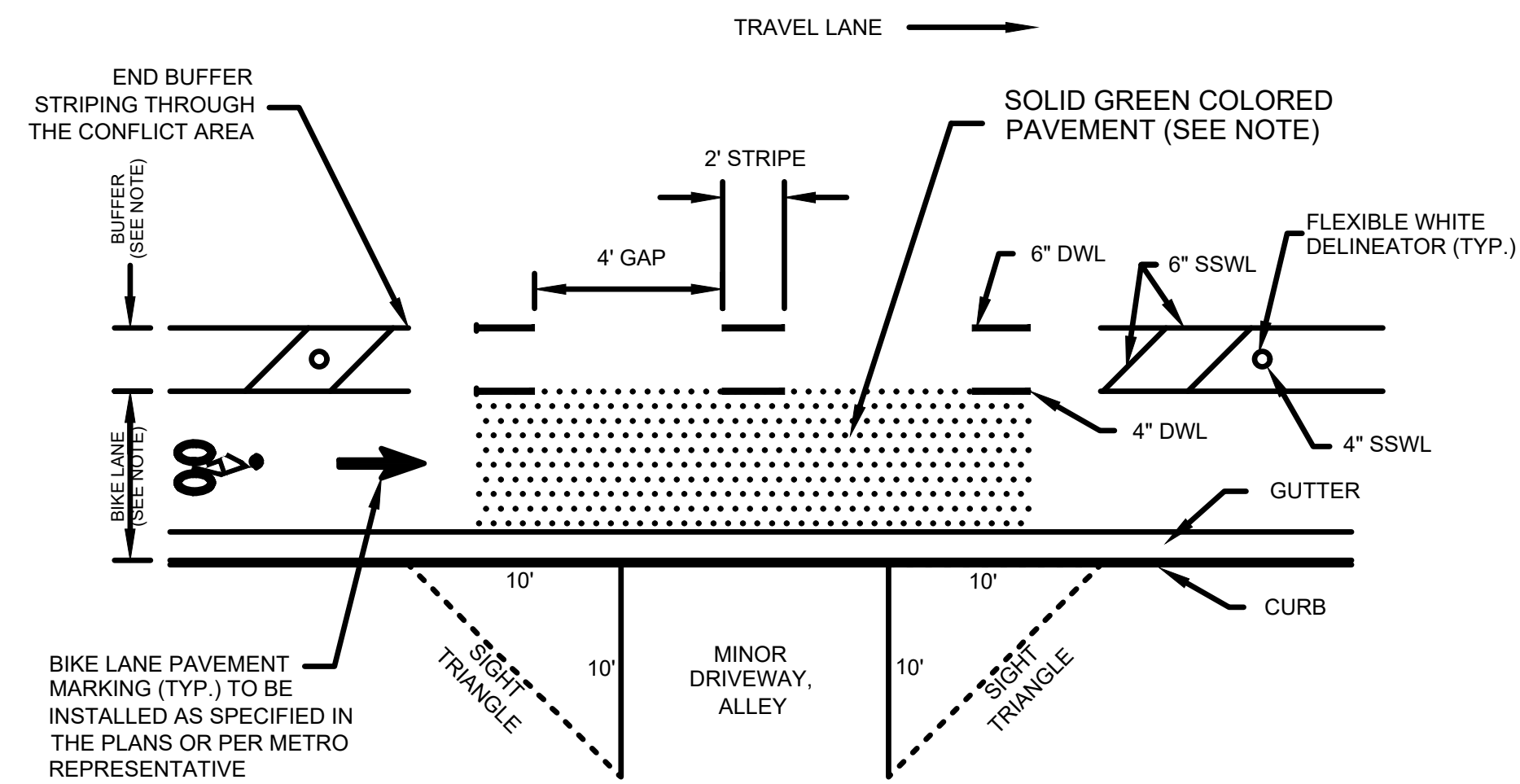
METROPOLITAN GOVERNMENT OF NASHVILLE
 AND DAVIDSON COUNTY, TENNESSEE
 NATIONS NEIGHBORWAYS BIKEWAY IMPROVEMENTS

PRELIMINARY

PROJECT NUMBER:	MET001
DATE:	04-2023
SCALE:	N/A
DRAWN BY:	JWC
DESIGNED BY:	NHP

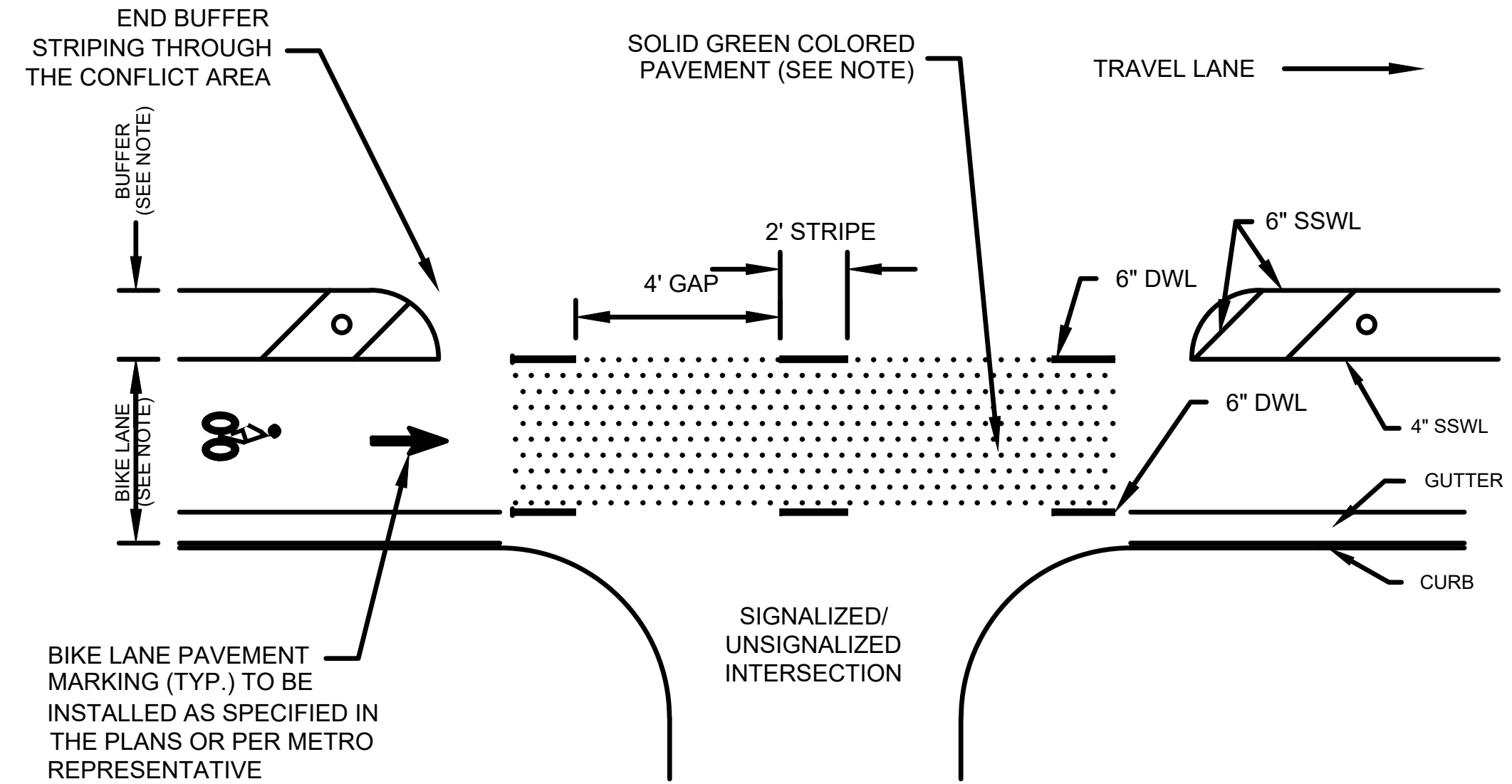
SHEET TITLE:
 DETAILS

C:\METRO2\BREVIS\MET002_000_NATIONS_NEIGHBORWAYS_CONCEPTUAL_DESIGN\SHEET_FILES\MET002_NATIONS_NEIGHBORWAYS_DETAILS.DWG, 4/12/2023 8:47 PM, WATE_PICERING



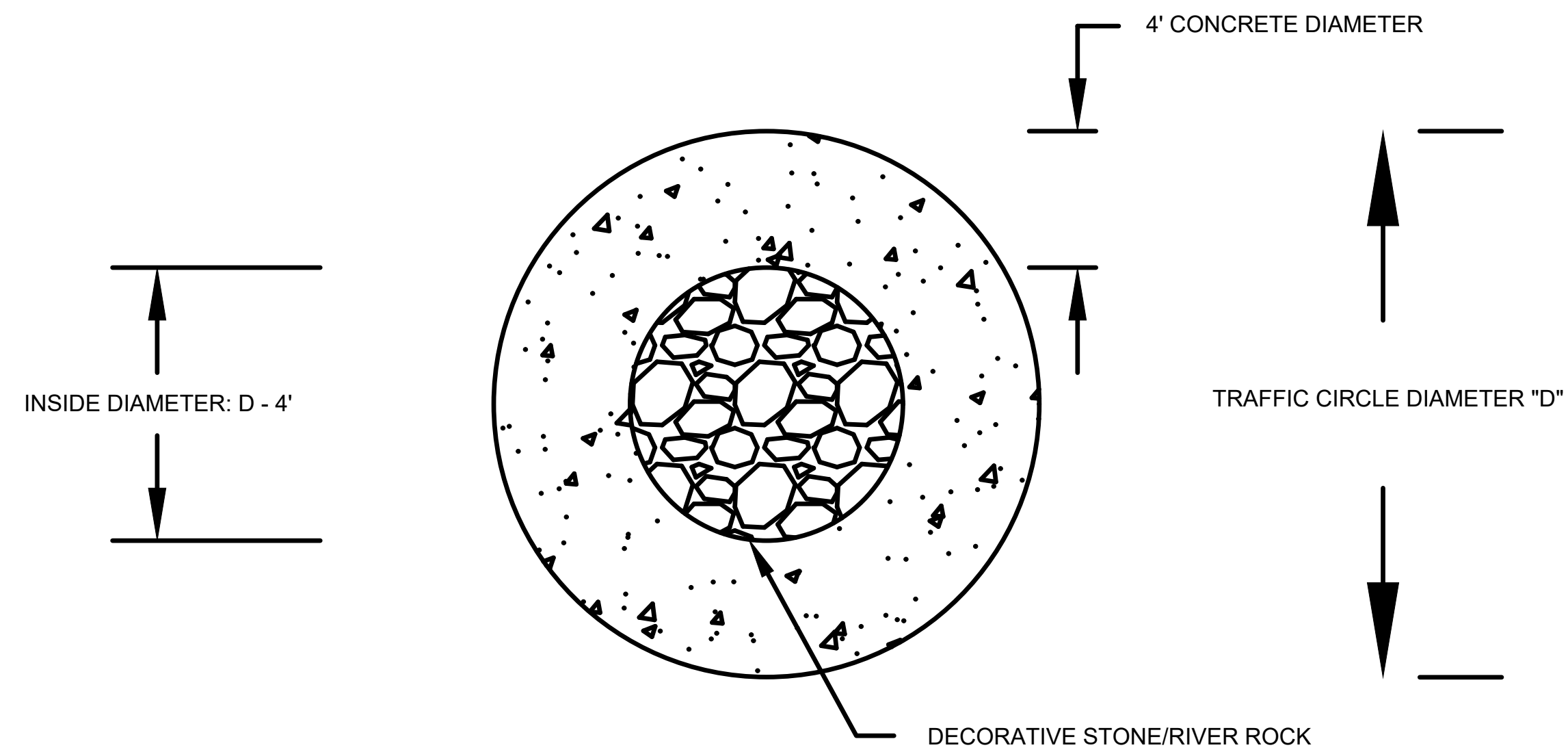
SIGHT TRIANGLE & BIKE CONFLICT LINE (BCL) DETAIL AT DRIVEWAYS/ALLEYS
N.T.S.

NOTE:
• SOLID GREEN COLORED PAVEMENT IS NOT REQUIRED AT DRIVEWAY LOCATIONS BUT MAY BE INSTALLED AS NEEDED (SEE PLANS).

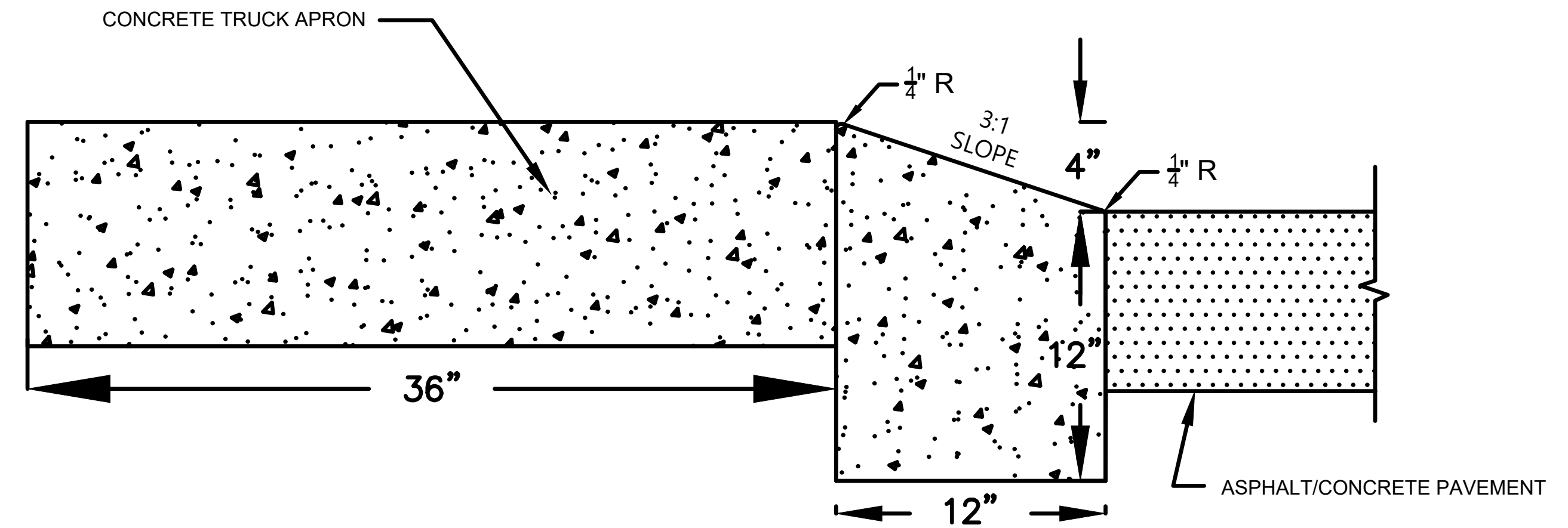


BIKE CONFLICT LINE (BCL) AT INTERSECTIONS
N.T.S.

NOTES:
• BIKE LANE WIDTH AND BUFFER WIDTH SPECIFIED ON THE PLANS. BIKE LANE WIDTH DIMENSION SHOWN ON THE PLANS INCLUDES THE EXIST. GUTTER PAN WHERE APPLICABLE.
• 36" WHITE FLEXIBLE DELINEATOR POSTS TO BE INSTALLED WITHIN THE BUFFER AT 20' SPACING CONTRACTOR TO COORDINATE WITH MPW PRIOR TO INSTALLATION.
• SOLID GREEN COLORED PAVEMENT SHALL BE REQUIRED AT ALL INTERSECTIONS.



MINIATURE CONCRETE TRAFFIC CIRCLE DETAIL
N.T.S.

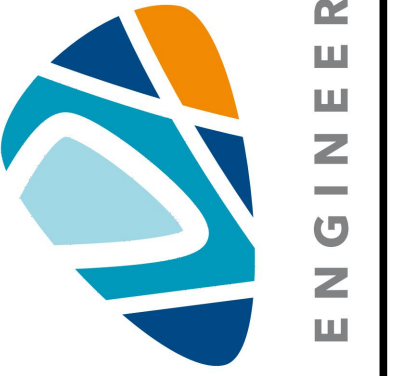


4" SLOPING DETACHED CONCRETE CURB DETAIL (FROM TDOT STANDARD DRAWING RP-SC-1)
N.T.S.

NOTE:
CONCRETE EXPANSION JOINT MATERIAL IS TO BE 1/2" IN THICKNESS AT ALL LOCATIONS. ALL MATERIAL IS TO BE PRE-MOLDED FIBER IN ACCORDANCE WITH THE TENNESSEE DEPARTMENT OF TRANSPORTATION'S SECTION 905 - JOINT MATERIALS OF THE STANDARD SPECIFICATIONS.

- EXPANSION JOINTS ARE TO BE PLACED AS FOLLOWS:
1. AT TANGENT POINTS OF CIRCULAR CURBS
 2. BETWEEN CURBS AND ABUTTING RIGID OBJECTS.
 3. AT OTHER PLACES WHERE STRESSES MAY DEVELOP.
 4. TO LINE UP WITH PAVEMENT JOINTS WHERE THE ADJACENT PAVEMENT IS CONCRETE.
 5. THE MAXIMUM SPACING IS TO BE 100 FEET.
 6. BETWEEN CONCRETE CURBS OR CURB AND GUTTERS AND CONCRETE PAVEMENT. IT IS NOT REQUIRED WHEN CURBS OR CURB AND GUTTERS ARE ADJACENT TO ASPHALT.

C:\METRO2\BIRWAYS\METRO2_020_NATIONS_NEIGHBORHOODS\CONCEPTUAL_DESIGN\SHEET_FILES\METRO2_NATIONS_NEIGHBORHOODS_DETAILS.DWG, 4/17/2023 8:47 PM, WATE, PCKERING



LDA ENGINEERING

REV	DATE	REVISION DESCRIPTION

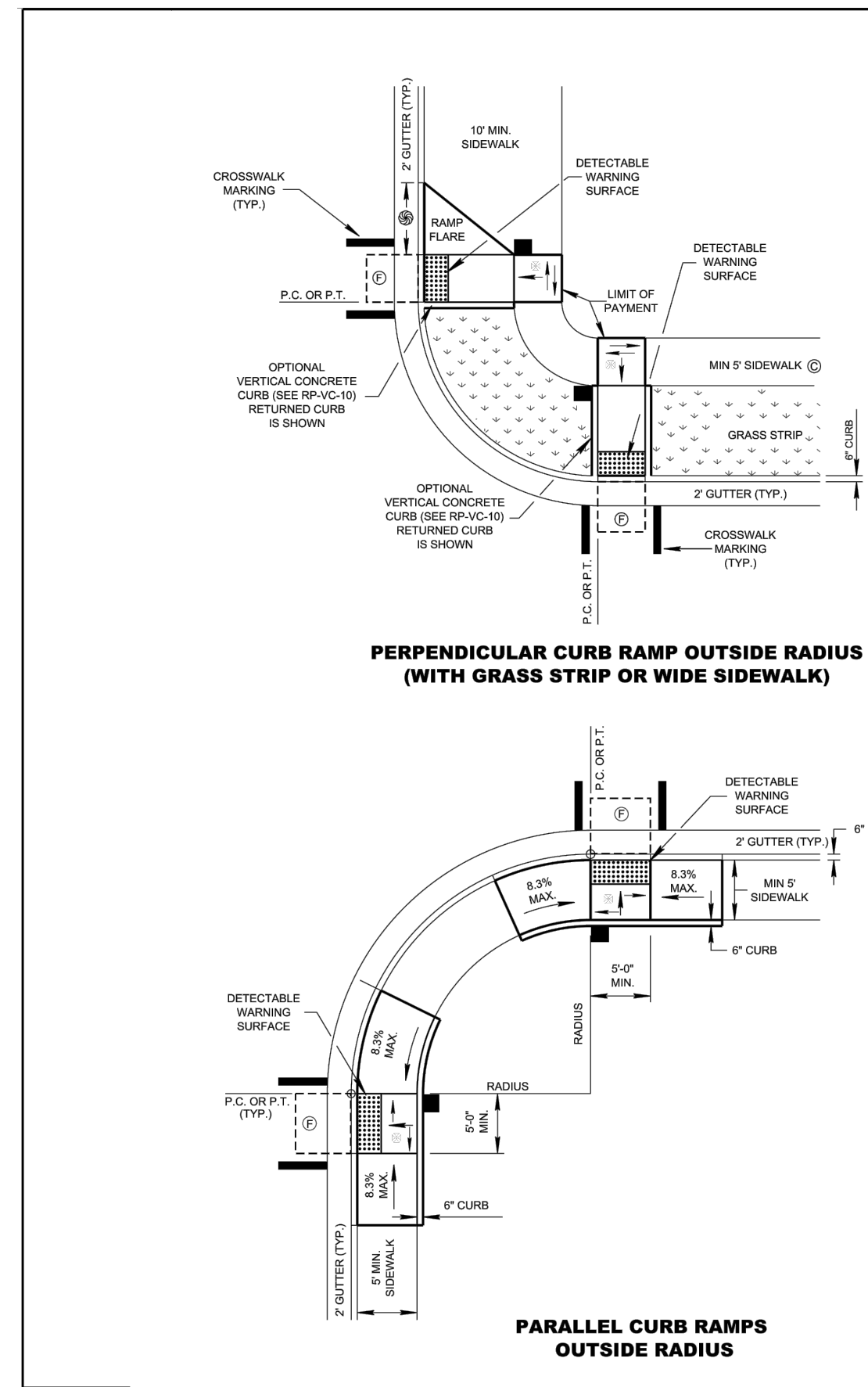
METROPOLITAN GOVERNMENT OF NASHVILLE
AND DAVIDSON COUNTY, TENNESSEE
NATIONS NEIGHBORHOODS BIKEWAY IMPROVEMENTS

PRELIMINARY

PROJECT NUMBER: MET001	SCALE: N/A
DATE: 04-2023	DESIGNED BY: NHP
DRAWN BY: JWC	

SHEET TITLE:
DETAILS

C:\METRO2\BIM\MS\METRO2_020_NATIONS_NEIGHBORHOODS_CONCEPTUAL_DESIGN\DWG_4/15/2023_8:53 PM_NTE_PICKEING



LEGEND

- ⊙ DIMENSION VARIES RELATIVE TO LONGITUDINAL ROADWAY GRADE, 8.3% DESIRABLE (10.0% MAX.)
- DENOTES APPROXIMATE PEDESTRIAN POLE/PUSHBUTTON LOCATION FOR SIGNALIZED INTERSECTIONS
- ⊗ 1.5% (2.0% MAX.)

GENERAL NOTES

(A) FOR DETECTABLE WARNING SURFACE DETAILS SEE STD. DWG. MM-CR-1. FOR ADDITIONAL DETAILS AND OTHER INFORMATION FOR PERPENDICULAR CURB RAMPS NOT SHOWN ON THIS DRAWING SEE STD. DWG. MM-CR-2 AND FOR PARALLEL CURB RAMPS SEE STD. DWG. MM-CR-3. FOR CROSSWALK MARKING DETAILS SEE STD. DWG. T-44.

(B) IF PERPENDICULAR CURB RAMPS AND TURNING SPACE CANNOT BE CONSTRUCTED DUE TO LIMITED RIGHT-OF-WAY, USE PARALLEL CURB RAMP INSTEAD.

(C) CARE SHALL BE TAKEN ON ALL ROADWAY CURB RAMPS AT INTERSECTIONS WITH SIDEWALK AND CURB RAMPS TO ENSURE A UNIFORM GRADE AROUND THEM. THE ROADWAY CURB RAMP GRADE SHALL BE FREE OF SAGS AND SHORT GRADE CHANGES.

(D) SIDEWALK WIDTH SHALL NOT INCLUDE 6" CONCRETE CURB. THE DESIRABLE SIDEWALK CROSS SLOPE IS 1.5%, ABSOLUTE MAXIMUM IS 2.0%.

(E) SPAN/RAIL STRUCTURES SHALL NOT BE PLACED IN THE CROSSWALK OR IN FRONT OF THE CURB RAMP.

(F) TURNING SPACE 1 CLEAR SPACE:
CLEAR SPACE BEYOND THE BOTTOM GRADE BREAK. A CLEAR SPACE 4' (MIN.) BY 4' (MIN.) SHALL BE PROVIDED WITHIN THE WIDTH OF THE PEDESTRIAN STREET CROSSING AND WHOLLY OUTSIDE THE PARALLEL VEHICLE TRAVEL LANE.
TURNING SPACE MUST BE PROVIDED AT THE TOP OF PERPENDICULAR CURB RAMPS. THE TURNING SPACE MUST BE 4' (MIN.) BY 4' (MIN.) AND IS PERMITTED TO OVERLAP OTHER TURNING SPACES AND CLEAR SPACES. WHERE THE TURNING SPACE IS CONFINED AT THE BACK OF THE SIDEWALK, THE TURNING SPACE MUST BE 4' (MIN.) BY 5' (MIN.), WITH THE 5' DIMENSION PROVIDED IN THE DIRECTION OF THE RAMP RUN.
FOR PARALLEL CURB RAMPS, A TURNING SPACE 4' (MIN.) BY 4' (MIN.) SHALL BE PROVIDED AT THE BOTTOM OF THE CURB RAMP AND SHALL BE PERMITTED TO OVERLAP OTHER TURNING SPACES AND CLEAR SPACES. IF THE TURNING SPACE IS CONFINED ON ONE OR MORE SIDES, THE TURNING SPACE SHALL BE 4' (MIN.) BY 5' (MIN.), THE 5' DIMENSION SHALL BE PROVIDED IN THE DIRECTION OF THE PEDESTRIAN STREET CROSSING.

(G) GRADE BREAKS:
GRADE BREAKS AT THE TOP AND BOTTOM OF CURB RAMP RUNS SHALL BE PERPENDICULAR TO THE DIRECTION OF THE CURB RAMP RUN. GRADE BREAKS SHALL NOT BE PERMITTED ON THE SURFACE OF CURB RAMP RUNS AND TURNING SPACES. SURFACE SLOPES THAT MEET AT GRADE BREAKS SHALL BE FLUSH.
WHERE THE END OF BOTTOM GRADE BREAK ARE BEHIND THE BACK OF CURB AND THE DISTANCE FROM EITHER END OF THE BOTTOM GRADE BREAK TO THE BACK OF CURB IS 3' OR LESS, DETECTABLE WARNING SURFACES SHALL BE PLACED ON THE CURB RAMP RUN WITHIN ONE DOME SPACING OF THE BOTTOM GRADE BREAK.

(H) PEDESTRIAN SIGNAL PUSHBUTTON:
WHERE PEDESTRIAN SIGNALS ARE PROVIDED AT PEDESTRIAN STREET CROSSINGS, THEY SHALL INCLUDE ACCESSIBLE PEDESTRIAN SIGNALS AND POLE/PEDESTRIAN PUSHBUTTONS COMPLYING WITH SECTIONS 4B.39 THROUGH 4B.10 OF THE MUTCD. FOR DETAILS OF THE PLACING OF PEDESTRIAN SIGNAL PUSHBUTTONS SEE TDDOT TRAFFIC DESIGN MANUAL.
WHEN TWO PEDESTRIAN PUSHBUTTONS ARE ON ONE CORNER THEY WILL BE SEPARATED BY 10 FEET.

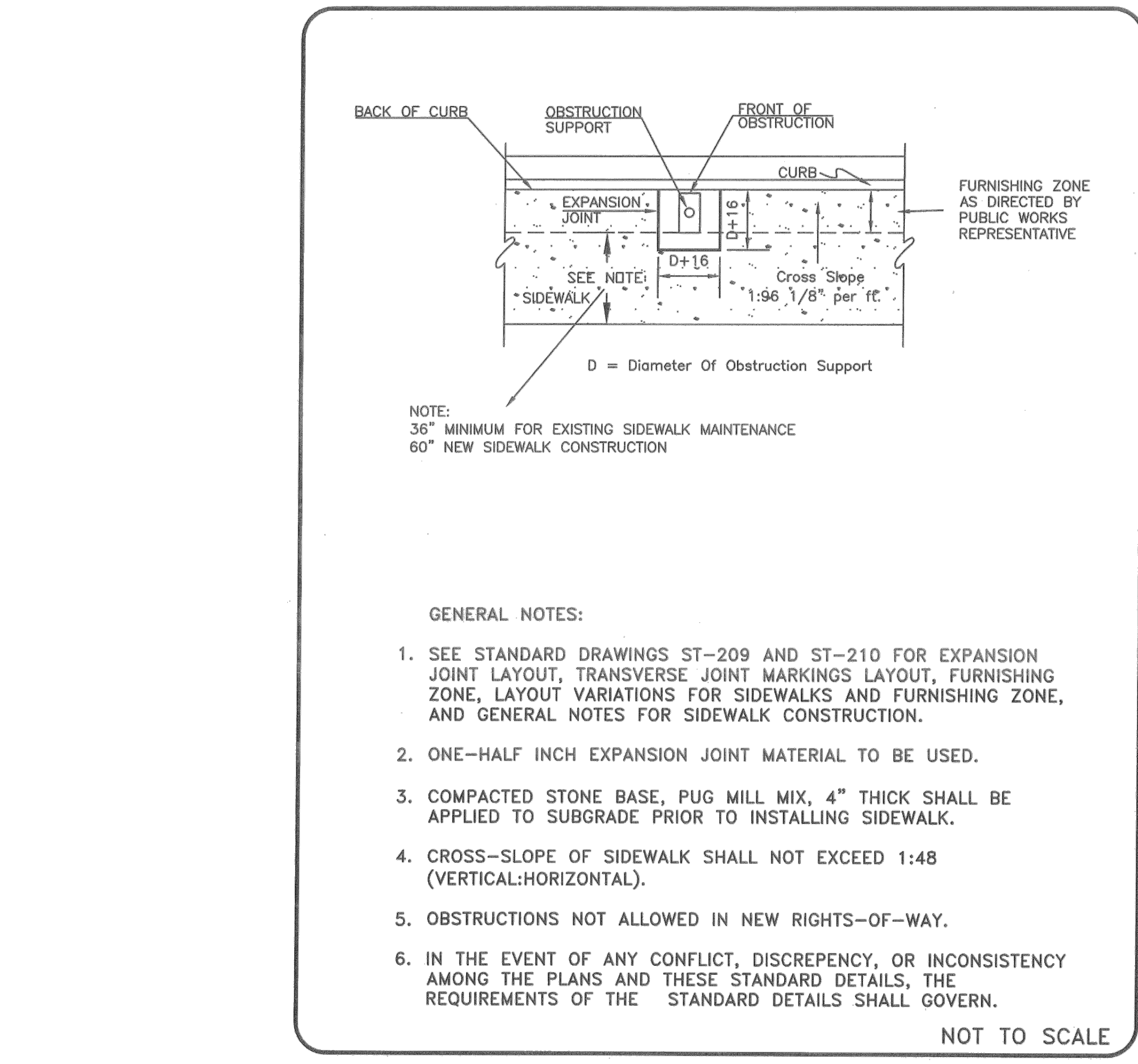
(I) PAYMENT:
COST OF CURB AND GUTTER TO BE INCLUDED IN THE PRICE OF ITEM NO. 702-01, CONCRETE CURB, PER C. Y. OR ITEM NO. 702-03, CONCRETE COMBINED CURB & GUTTER, PER C. Y.

NEW CURB RAMPS:
ALL COSTS OF INSTALLING CURB RAMPS, INCLUDING DETECTABLE WARNING SURFACES IN NEWLY CONSTRUCTED SIDEWALK AREAS, SHALL BE PAID BY ITEM NO. 701-02-03, CONCRETE CURB RAMP, PER SQUARE FOOT.
PAYMENT SHALL INCLUDE ALL MATERIALS, EQUIPMENT, AND LABOR NECESSARY FOR CONSTRUCTION OF THE CURB RAMPS, INCLUDING INSTALLATION OF DETECTABLE WARNING SURFACES.

CURB RAMPS (RETROFIT):
ALL COSTS OF INSTALLING CURB RAMPS, INCLUDING DETECTABLE WARNING SURFACES IN EXISTING SIDEWALK AREAS, REMOVAL OF THE EXISTING SIDEWALK, AND ADJUSTMENT OF GUTTER PAN SLOPE, SHALL BE PAID BY ITEM NO. 701-02-01, CONCRETE CURB RAMP (RETROFIT), PER SQUARE FOOT.
PAYMENT SHALL INCLUDE ALL MATERIALS, EQUIPMENT, AND LABOR INSTALLATION OF CURB RAMPS, INCLUDING INSTALLATION OF DETECTABLE WARNING SURFACES.

(Replaces Std. Draw. RP-H-4)

STATE OF TENNESSEE
STANDARD DRAWING
DEPARTMENT OF TRANSPORTATION
DUAL CROSSING CURB RAMP PLACED OUTSIDE CURVE
01-07-2019 MM-CR-6

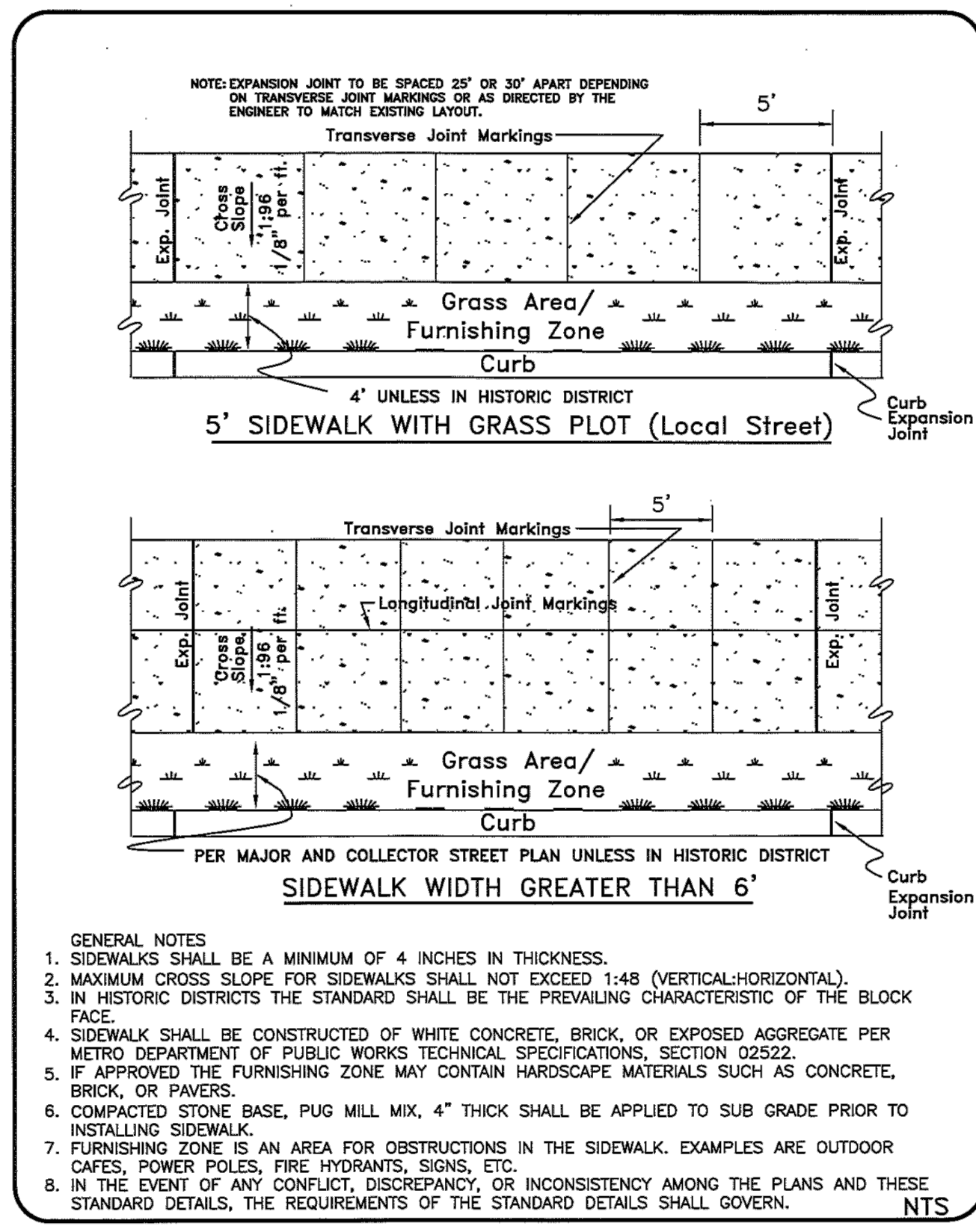


GENERAL NOTES:

- SEE STANDARD DRAWINGS ST-209 AND ST-210 FOR EXPANSION JOINT LAYOUT, TRANSVERSE JOINT MARKINGS LAYOUT, FURNISHING ZONE, LAYOUT VARIATIONS FOR SIDEWALKS AND FURNISHING ZONE, AND GENERAL NOTES FOR SIDEWALK CONSTRUCTION.
- ONE-HALF INCH EXPANSION JOINT MATERIAL TO BE USED.
- COMPACTED STONE BASE, PUG MILL MIX, 4" THICK SHALL BE APPLIED TO SUBGRADE PRIOR TO INSTALLING SIDEWALK.
- CROSS-SLOPE OF SIDEWALK SHALL NOT EXCEED 1:48 (VERTICAL:HORIZONTAL).
- OBSTRUCTIONS NOT ALLOWED IN NEW RIGHTS-OF-WAY.
- IN THE EVENT OF ANY CONFLICT, DISCREPANCY, OR INCONSISTENCY AMONG THE PLANS AND THESE STANDARD DETAILS, THE REQUIREMENTS OF THE STANDARD DETAILS SHALL GOVERN.

NOT TO SCALE

METROPOLITAN GOVERNMENT OF NASHVILLE AND DAVIDSON COUNTY DEPARTMENT OF PUBLIC WORKS	OBSTRUCTION IN SIDEWALK	DWG. NO. ST-211
DIR. OF ENG.: <i>Mark Macy</i> DATE: 7/15/04	REVISED: 11/24/03	REVISED: 02/17/04
	REVISED: 06/23/04	

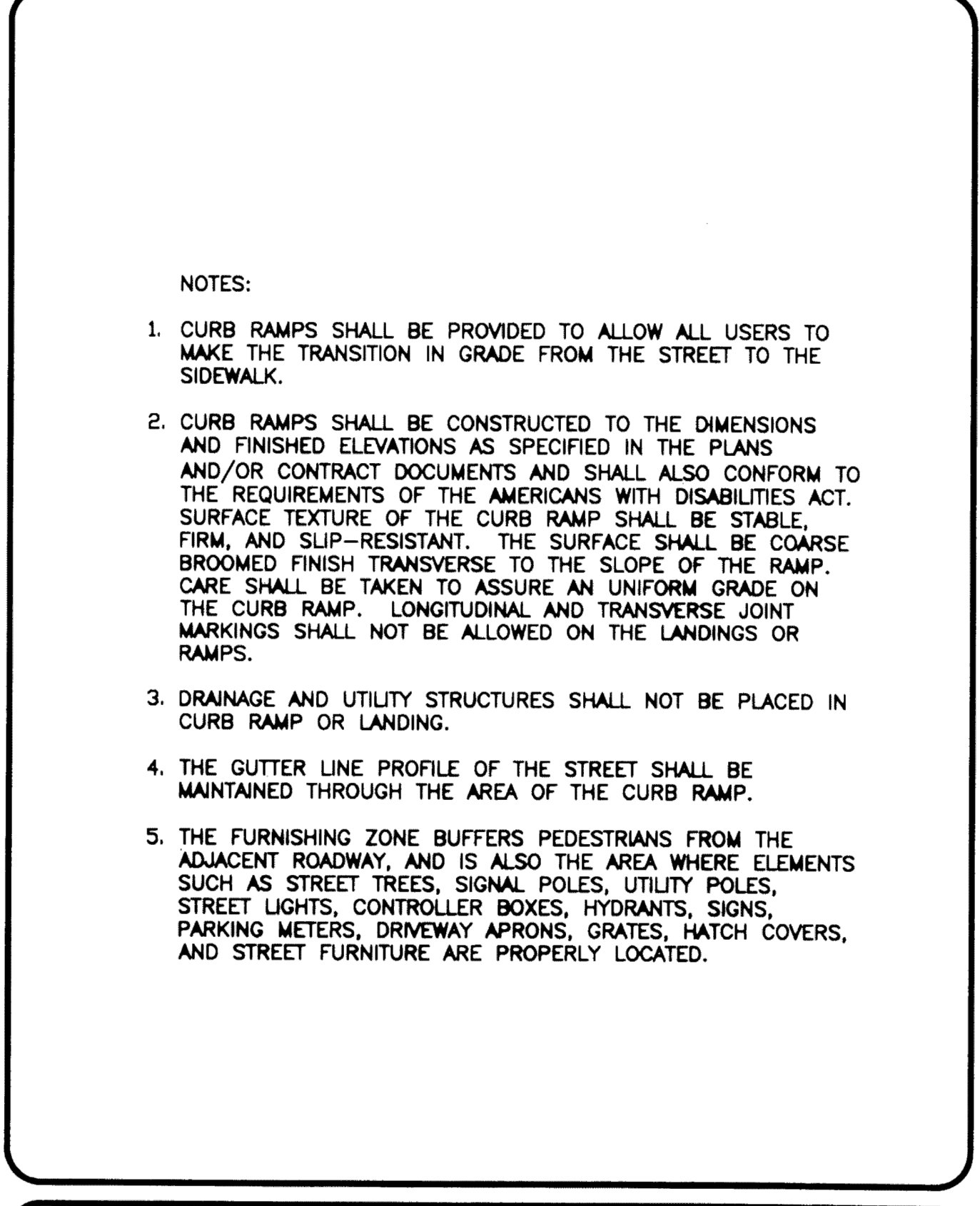


GENERAL NOTES

- SIDEWALKS SHALL BE A MINIMUM OF 4 INCHES IN THICKNESS.
- MAXIMUM CROSS SLOPE FOR SIDEWALKS SHALL NOT EXCEED 1:48 (VERTICAL:HORIZONTAL).
- IN HISTORIC DISTRICTS THE STANDARD SHALL BE THE PREVAILING CHARACTERISTIC OF THE BLOCK FACE.
- SIDEWALK SHALL BE CONSTRUCTED OF WHITE CONCRETE, BRICK, OR EXPOSED AGGREGATE PER METRO DEPARTMENT OF PUBLIC WORKS TECHNICAL SPECIFICATIONS, SECTION 02522.
- IF APPROVED THE FURNISHING ZONE MAY CONTAIN HARDSCAPE MATERIALS SUCH AS CONCRETE, BRICK, OR PAVERS.
- COMPACTED STONE BASE, PUG MILL MIX, 4" THICK SHALL BE APPLIED TO SUB GRADE PRIOR TO INSTALLING SIDEWALK.
- FURNISHING ZONE IS AN AREA FOR OBSTRUCTIONS IN THE SIDEWALK. EXAMPLES ARE OUTDOOR CAFES, POWER POLES, FIRE HYDRANTS, SIGNS, ETC.
- IN THE EVENT OF ANY CONFLICT, DISCREPANCY, OR INCONSISTENCY AMONG THE PLANS AND THESE STANDARD DETAILS, THE REQUIREMENTS OF THE STANDARD DETAILS SHALL GOVERN.

NTS

METROPOLITAN GOVERNMENT OF NASHVILLE AND DAVIDSON COUNTY DEPARTMENT OF PUBLIC WORKS	SIDEWALK CONSTRUCTION	DWG. NO. ST-210
DIR. OF ENG.: <i>Mark Macy</i> DATE: 9/12/17	REVISED: 05/02/03	REVISED: 11/24/03
	REVISED: 06/23/04	REVISED: 09/11/17



NOTES:

- CURB RAMPS SHALL BE PROVIDED TO ALLOW ALL USERS TO MAKE THE TRANSITION IN GRADE FROM THE STREET TO THE SIDEWALK.
- CURB RAMPS SHALL BE CONSTRUCTED TO THE DIMENSIONS AND FINISHED ELEVATIONS AS SPECIFIED IN THE PLANS AND/OR CONTRACT DOCUMENTS AND SHALL ALSO CONFORM TO THE REQUIREMENTS OF THE AMERICANS WITH DISABILITIES ACT. SURFACE TEXTURE OF THE CURB RAMP SHALL BE STABLE, FIRM, AND SLIP-RESISTANT. THE SURFACE SHALL BE COARSE BROOMED FINISH TRANSVERSE TO THE SLOPE OF THE RAMP. CARE SHALL BE TAKEN TO ASSURE AN UNIFORM GRADE ON THE CURB RAMP. LONGITUDINAL AND TRANSVERSE JOINT MARKINGS SHALL NOT BE ALLOWED ON THE LANDINGS OR RAMPS.
- DRAINAGE AND UTILITY STRUCTURES SHALL NOT BE PLACED IN CURB RAMP OR LANDING.
- THE GUTTER LINE PROFILE OF THE STREET SHALL BE MAINTAINED THROUGH THE AREA OF THE CURB RAMP.
- THE FURNISHING ZONE BUFFERS PEDESTRIANS FROM THE ADJACENT ROADWAY, AND IS ALSO THE AREA WHERE ELEMENTS SUCH AS STREET TREES, SIGNAL POLES, UTILITY POLES, STREET LIGHTS, CONTROLLER BOXES, HYDRANTS, SIGNS, PARKING METERS, DRIVEWAY APRONS, GRATES, HATCH COVERS, AND STREET FURNITURE ARE PROPERLY LOCATED.

METROPOLITAN GOVERNMENT OF NASHVILLE AND DAVIDSON COUNTY DEPARTMENT OF PUBLIC WORKS	STANDARD CURB RAMP NOTES	DWG. NO. ST-215
ASST. DIR. ENG.: <i>Mark Macy</i> DATE: 11/21/00	REVISED: 11/20/00	REVISED: 11/10/00



LDA ENGINEERING

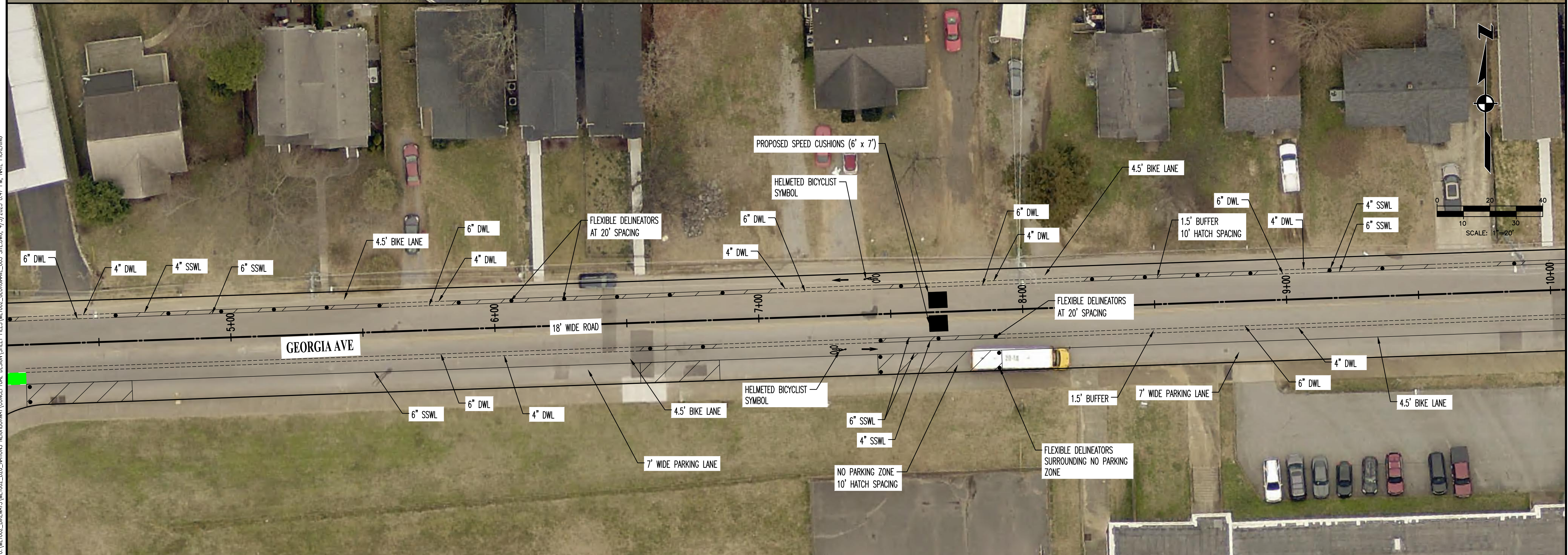
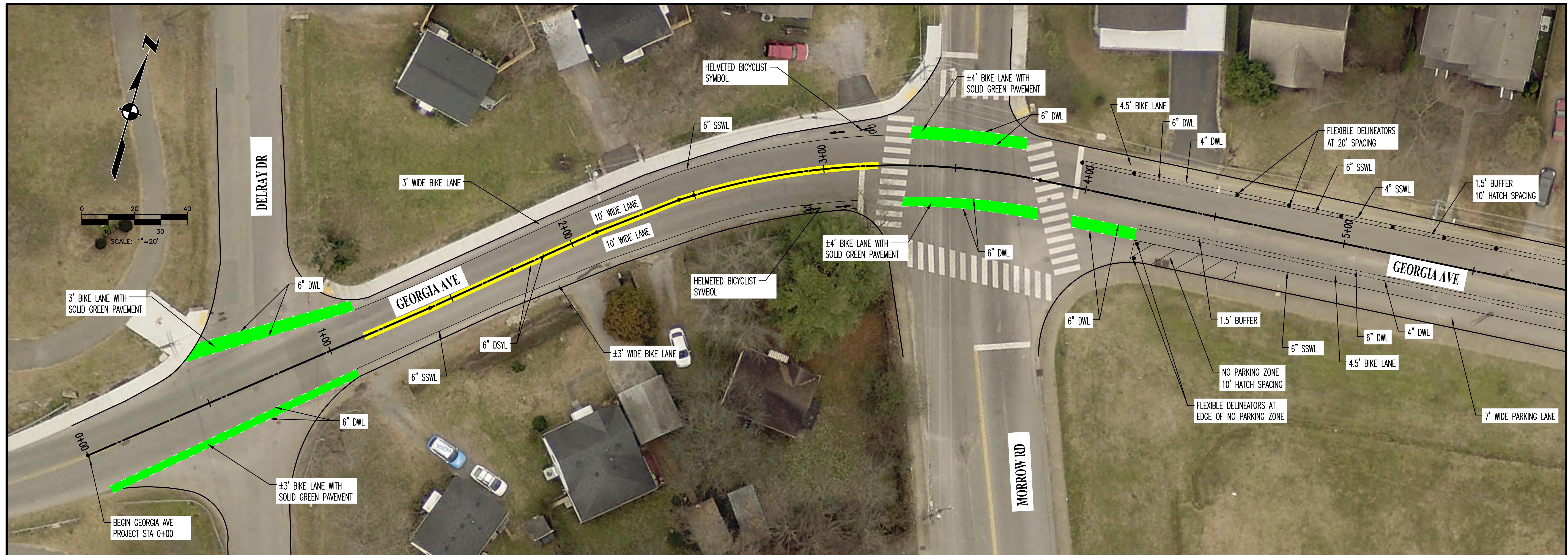
REV	DATE	REVISION DESCRIPTION

METROPOLITAN GOVERNMENT OF NASHVILLE AND DAVIDSON COUNTY, TENNESSEE
NATIONS NEIGHBORHOODS BIKEWAY IMPROVEMENTS

PRELIMINARY

PROJECT NUMBER: MET001	DATE: 04-2023	SCALE: N/A
DRAWN BY: JWC	DESIGNED BY: NHP	
SHEET TITLE: DETAILS		

SHEET 4 OF 17



C:\MET002\BREVIEWS\MET002_020_NATIONS_NEIGHBORHOODS\CONCEPTUAL DESIGN SHEET FILES\MET002_GEOGRAPHIC_005_SHEETS_4/15/2023 8:47 PM WATE PICKERING

THIS DOCUMENT AND THE IDEAS AND DESIGNS INCORPORATED HEREIN, AS AN INSTRUMENT OF PROFESSIONAL SERVICE, IS THE PROPERTY OF LDA ENGINEERING AND IS NOT TO BE USED, IN WHOLE OR IN PART, FOR ANY OTHER PROJECT WITHOUT THE WRITTEN AUTHORIZATION OF LDA ENGINEERING.



LDA ENGINEERING

REV	DATE	REVISION DESCRIPTION

METROPOLITAN GOVERNMENT OF NASHVILLE
AND DAVIDSON COUNTY, TENNESSEE
NATIONS NEIGHBORHOODS BIKEWAY IMPROVEMENTS

PRELIMINARY

PROJECT NUMBER: MET001	
DATE: 04-2023	SCALE: 1"=20'
DRAWN BY: JWC	DESIGNED BY: NHP
SHEET TITLE: PROPOSED SITE LAYOUT	
SHEET 5 OF 17	



LDA ENGINEERING

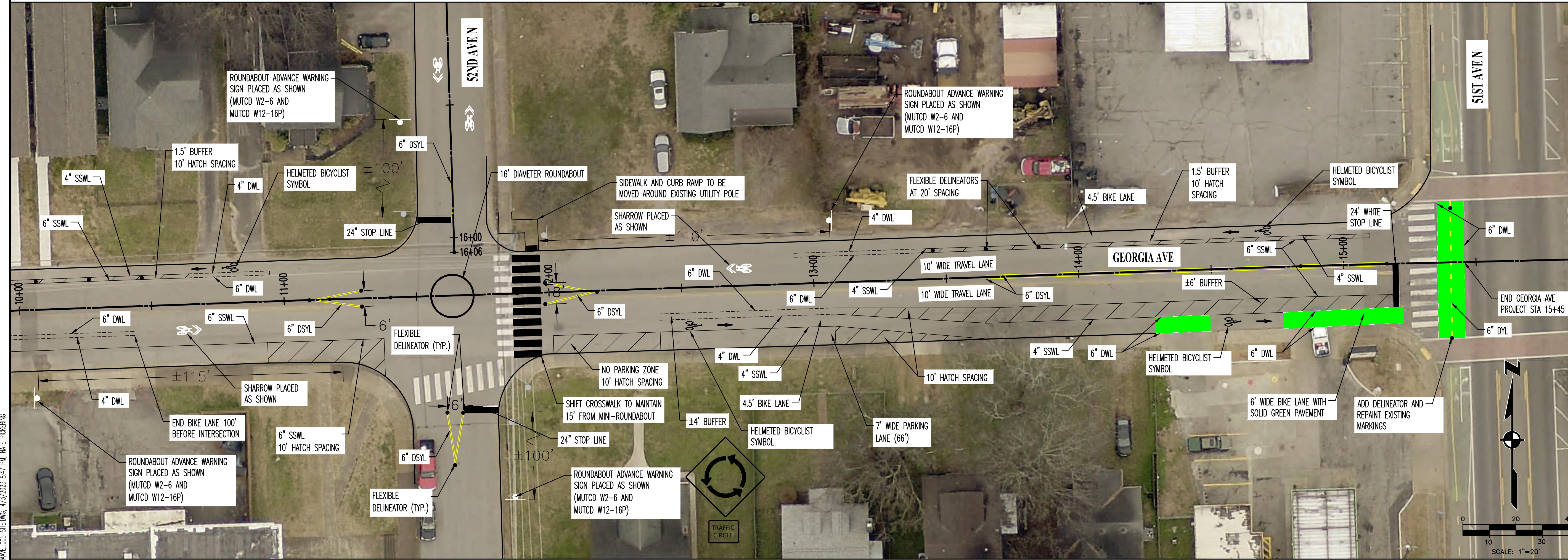
REV	DATE	REVISION DESCRIPTION

METROPOLITAN GOVERNMENT OF NASHVILLE
AND DAVIDSON COUNTY, TENNESSEE
NATIONS NEIGHBORWAYS BIKEWAY IMPROVEMENTS

PRELIMINARY

PROJECT NUMBER:	MET001
DATE:	04-2023
SCALE:	1"=20'
DRAWN BY:	JWC
DESIGNED BY:	NHP

SHEET TITLE:
PROPOSED SITE LAYOUT



C:\MET002\BHW\MET002_000_NATIONS_NEIGHBORWAYS_CONCEPTUAL_DESIGN\SHEET FILES\MET002_GEOGRAPHIC_005_SHEETING_4/15/2023_8:47 PM_INTE_PICKERING

THIS DOCUMENT AND THE IDEAS AND DESIGNS INCORPORATED HEREIN, AS AN INSTRUMENT OF PROFESSIONAL SERVICE, IS THE PROPERTY OF LDA ENGINEERING AND IS NOT TO BE USED, IN WHOLE OR IN PART, FOR ANY OTHER PROJECT WITHOUT THE WRITTEN AUTHORIZATION OF LDA ENGINEERING.



C:\METD02\BREVIS\METD02_020_NATIONS_NEIGHBORWAYS_CONCEPTUAL_DESIGN_SHEET_FILES\METD02_GEOGRAPHIC_05 SITEWORK_4/15/2023 8:47 PM INE PICKERING



REV	DATE	REVISION DESCRIPTION

METROPOLITAN GOVERNMENT OF NASHVILLE
AND DAVIDSON COUNTY, TENNESSEE
NATIONS NEIGHBORWAYS BIKEWAY IMPROVEMENTS

PRELIMINARY

PROJECT NUMBER: MET001	SCALE: 1"=20'
DATE: 04-2023	DRAWN BY: JWC
DESIGNED BY: NHP	SHEET TITLE: PROPOSED SITE LAYOUT

C:\MET002\BIRWAYS\MET002_020_NATIONS_NEIGHBORWAY\CONCEPTUAL_DESIGN\SHEET_FILES\MET002_GEOGRAPHIC_005_SHEWING_4/5/2023_8:48 PM_INTE_PICKERING



LDA ENGINEERING

REV	DATE	REVISION DESCRIPTION

METROPOLITAN GOVERNMENT OF NASHVILLE
AND DAVIDSON COUNTY, TENNESSEE
NATIONS NEIGHBORWAYS BIKEWAY IMPROVEMENTS

PRELIMINARY

PROJECT NUMBER:	MET001
DATE:	04-2023
SCALE:	1"=20'
DRAWN BY:	JWC
DESIGNED BY:	NHP

SHEET TITLE:
PROPOSED SITE
LAYOUT

THIS DOCUMENT AND THE IDEAS AND DESIGNS INCORPORATED HEREIN, AS AN INSTRUMENT OF PROFESSIONAL SERVICE, IS THE PROPERTY OF LDA ENGINEERING AND IS NOT TO BE USED, IN WHOLE OR IN PART, FOR ANY OTHER PROJECT WITHOUT THE WRITTEN AUTHORIZATION OF LDA ENGINEERING.

C:\MET002\BIRNEM\MET002_000_NATIONS_NEIGHBORHOODS_CONCEPTUAL_DESIGN\CONCEPTUAL_DESIGN\DESIGN_SHEET_FILES\MET002_GEOGRAPHIC_4/5/2023_8:48 PM_INTE_PICKERING



LDA ENGINEERING

REV	DATE	REVISION DESCRIPTION

METROPOLITAN GOVERNMENT OF NASHVILLE
AND DAVIDSON COUNTY, TENNESSEE
NATIONS NEIGHBORHOODS BIKEWAY IMPROVEMENTS

PRELIMINARY

PROJECT NUMBER: MET001
DATE: 04-2023 SCALE: 1"=20'
DRAWN BY: JWC DESIGNED BY: NHP

SHEET TITLE:
PROPOSED SITE LAYOUT

THIS DOCUMENT AND THE IDEAS AND DESIGNS INCORPORATED HEREIN, AS AN INSTRUMENT OF PROFESSIONAL SERVICE, IS THE PROPERTY OF LDA ENGINEERING AND IS NOT TO BE USED, IN WHOLE OR IN PART, FOR ANY OTHER PROJECT WITHOUT THE WRITTEN AUTHORIZATION OF LDA ENGINEERING.



REV	DATE	REVISION DESCRIPTION

METROPOLITAN GOVERNMENT OF NASHVILLE
AND DAVIDSON COUNTY, TENNESSEE
NATIONS NEIGHBORWAYS BIKEWAY IMPROVEMENTS

PRELIMINARY

PROJECT NUMBER:	MET001
DATE:	04-2023
DRAWN BY:	JWC
DESIGNED BY:	NHP

SHEET TITLE:
PROPOSED SITE
LAYOUT



C:\MET002\BUREAU\MET002_000_NATIONS_NEIGHBORWAYS_CONCEPTUAL_DESIGN\SHEET FILES\MET002_GEOGRAPHIC_4/15/2023_8:48 PM_AE_PICKERING

C:\MET002\BHWK\MET002_020_NATIONS_NEIGHBORWAY\CONCEPTUAL_DESIGN\SHEET_FILES\MET002_GEOGRAPHIC_005_SHEETS_4/15/2023_8:48 PM_INTE_PICKERING



LDA ENGINEERING

REV	DATE	REVISION DESCRIPTION

METROPOLITAN GOVERNMENT OF NASHVILLE
AND DAVIDSON COUNTY, TENNESSEE
NATIONS NEIGHBORWAYS BIKEWAY IMPROVEMENTS

PRELIMINARY

PROJECT NUMBER:	MET001
DATE:	04-2023
SCALE:	1"=20'
DRAWN BY:	JWC
DESIGNED BY:	NHP

SHEET TITLE:
PROPOSED SITE
LAYOUT

C:\MET002\BREVWKS\MET002_000_NATIONS_NEIGHBORWAYS_CONCEPTUAL_DESIGN\SHEET_FILES\MET002_GEOGRAPHIC_4/5/2023_8:48 PM_INTE_PICKERING



LDA ENGINEERING

REV	DATE	REVISION DESCRIPTION

METROPOLITAN GOVERNMENT OF NASHVILLE
AND DAVIDSON COUNTY, TENNESSEE
NATIONS NEIGHBORWAYS BIKEWAY IMPROVEMENTS

PRELIMINARY

PROJECT NUMBER: MET001
DATE: 04-2023 SCALE: 1"=20'
DRAWN BY: JWC DESIGNED BY: NHP

SHEET TITLE:
PROPOSED SITE LAYOUT

THIS DOCUMENT AND THE IDEAS AND DESIGNS INCORPORATED HEREIN, AS AN INSTRUMENT OF PROFESSIONAL SERVICE, IS THE PROPERTY OF LDA ENGINEERING AND IS NOT TO BE USED, IN WHOLE OR IN PART, FOR ANY OTHER PROJECT WITHOUT THE WRITTEN AUTHORIZATION OF LDA ENGINEERING.

C:\MET002\BVENWAYS\MET002_020_NATIONS_NEIGHBORWAY\CONCEPTUAL_DESIGN\SHEET_FILES\MET002_GEOGRAPHIC_005_SHEETS_4/15/2023_8:48 PM_INTE_PICKERING



LDA ENGINEERING

REV	DATE	REVISION DESCRIPTION

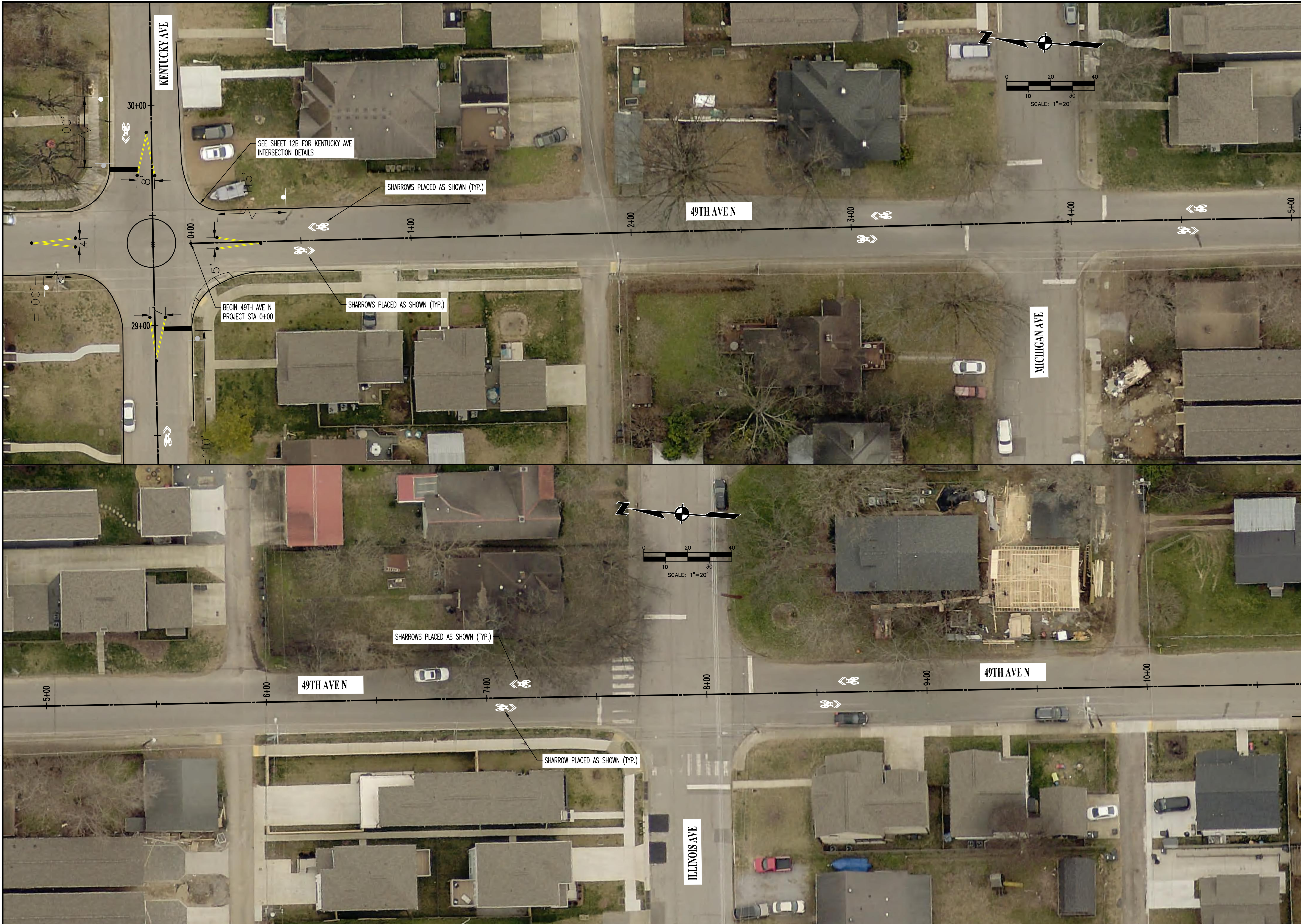
METROPOLITAN GOVERNMENT OF NASHVILLE
AND DAVIDSON COUNTY, TENNESSEE
NATIONS NEIGHBORWAYS BIKEWAY IMPROVEMENTS

PRELIMINARY

PROJECT NUMBER:	MET001
DATE:	04-2023
SCALE:	1"=20'
DRAWN BY:	JWC
DESIGNED BY:	NHP

SHEET TITLE:
PROPOSED SITE LAYOUT

C:\MET002\BUREAU\MET002_000_NATIONS_NEIGHBORHOOD_CONCEPTUAL_DESIGN\SHEET_FILES\MET002_GEOGRAPHIC_4/5/2023_8:48 PM_AVE_PICKING



LDA ENGINEERING

REV	DATE	REVISION DESCRIPTION

METROPOLITAN GOVERNMENT OF NASHVILLE
AND DAVIDSON COUNTY, TENNESSEE
NATIONS NEIGHBORHOODS BIKEWAY IMPROVEMENTS

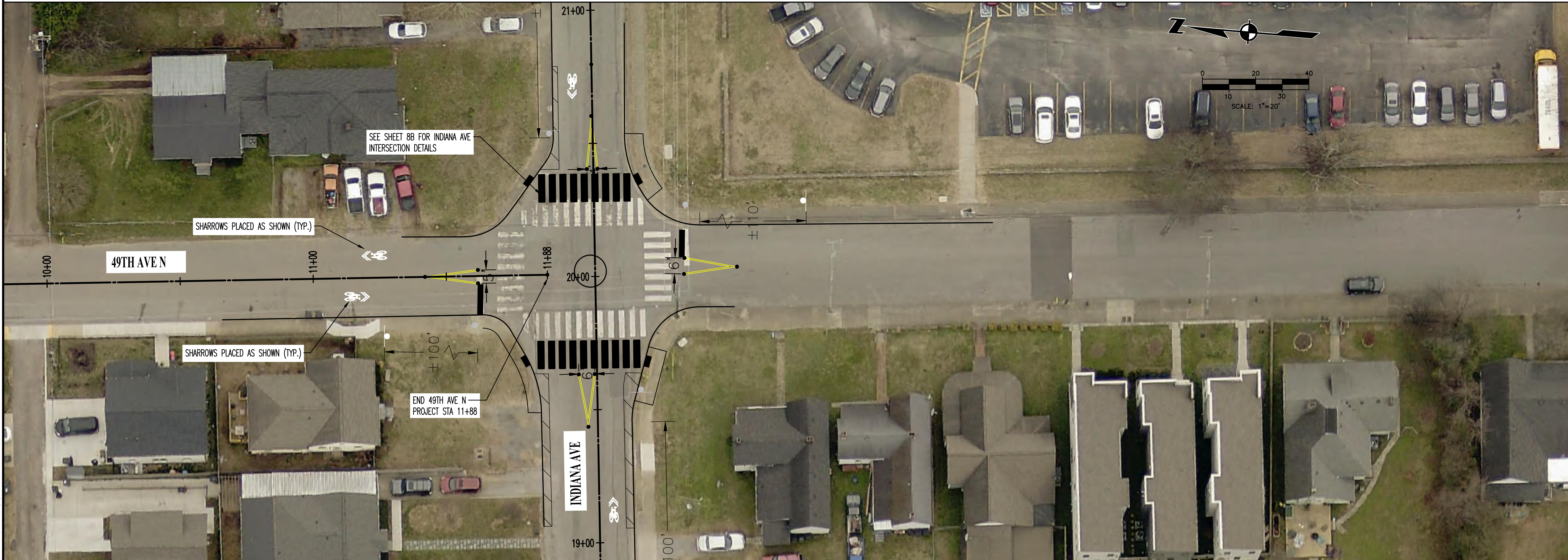
PRELIMINARY

PROJECT NUMBER:	MET001
DATE:	04-2023
DRAWN BY:	JWC
DESIGNED BY:	NHP

SHEET TITLE:
PROPOSED SITE LAYOUT

THIS DOCUMENT AND THE IDEAS AND DESIGNS INCORPORATED HEREIN, AS AN INSTRUMENT OF PROFESSIONAL SERVICE, IS THE PROPERTY OF LDA ENGINEERING AND IS NOT TO BE USED, IN WHOLE OR IN PART, FOR ANY OTHER PROJECT WITHOUT THE WRITTEN AUTHORIZATION OF LDA ENGINEERING.

C:\MET002\BIRNICK\MET002_020_NATIONS_NEIGHBORWAY_CONCEPTUAL_DESIGN\SHEET FILES\MET002_GEOGRAPHIC_005_SHEETS_4/15/2023 8:48 PM INE PICKERING



LDA ENGINEERING

REV	DATE	REVISION DESCRIPTION

METROPOLITAN GOVERNMENT OF NASHVILLE
AND DAVIDSON COUNTY, TENNESSEE
NATIONS NEIGHBORWAYS BIKEWAY IMPROVEMENTS

PRELIMINARY

PROJECT NUMBER:	MET001
DATE:	04-2023
SCALE:	1"=20'
DRAWN BY:	JWC
DESIGNED BY:	NHP

SHEET TITLE:
PROPOSED SITE
LAYOUT