

South 14th Street
81 Wm St, Nashville, TN
36°17'N 86°37'W

10 m | Camera: 300 m 38°09'49"N 86°44'48"W 131 m

add helmeted biker symbol

add helmeted biker symbol

4'-2.5' buffer
20' hatch spacing
add delineators 20' spacing

5' bike lane
(does not include curb and gutter)

7.5' parking lane

10' travel lane

10' travel lane

6" DSYL centerline

end parking lane 30' before driveway at 1317 S 14th St

S 14TH STREET

6" DWL/4" DWL across all driveways leave room for 15' turn radius

4'-2' buffer
20' hatch spacing
add delineators 20' spacing

add 24" stop line, min. 4' from bikeway crossing

5' bike lane

remove existing W16-18P and R4-11 replace with R3-17 (24" X18")

add 10'x2' pedestrian crosswalks

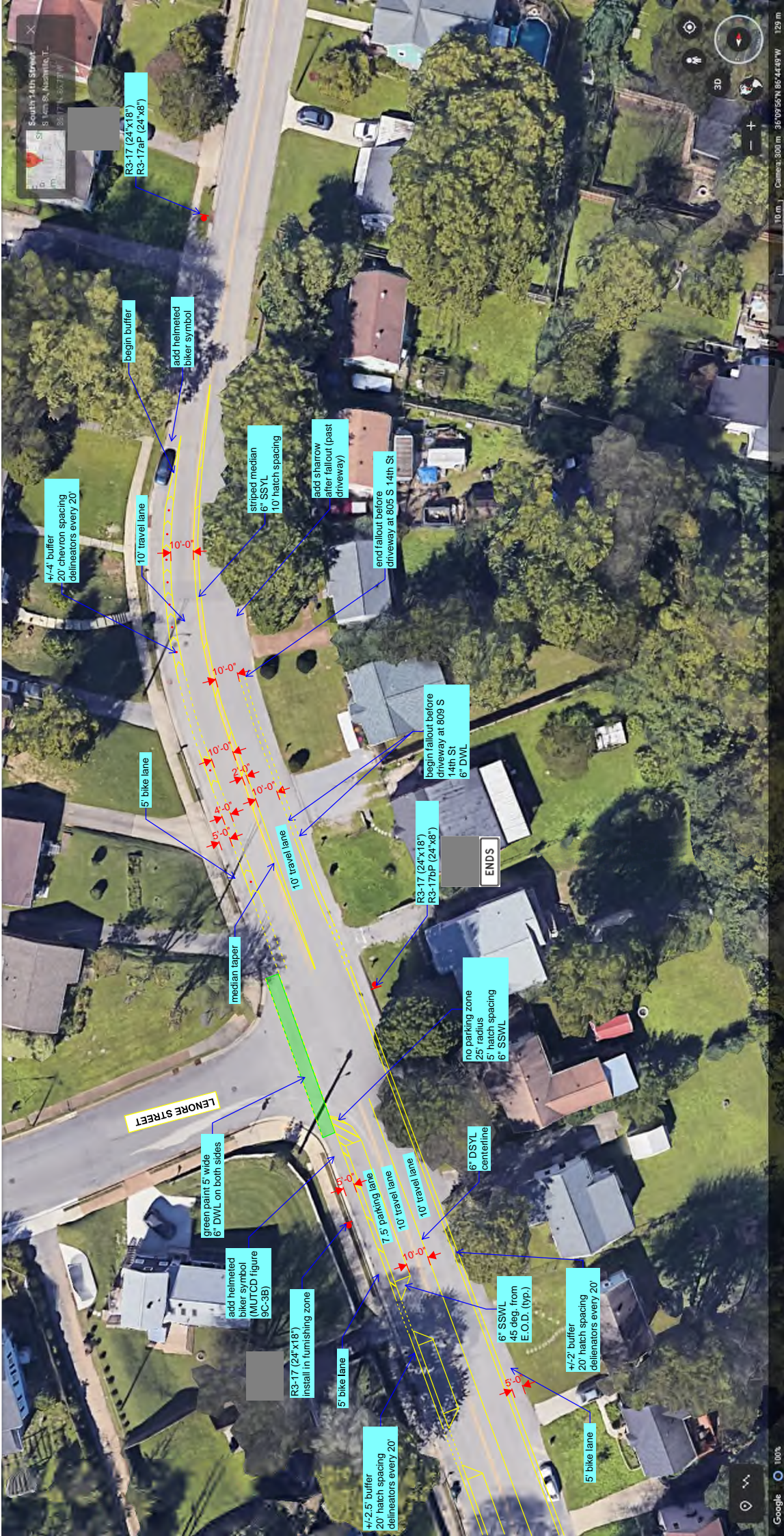
add 5'x2' green "crossbikes" markings adjacent to crosswalk

add helmeted biker symbol (MUTCD Figure 9C-3B)

DAVIDSON STREET

green paint 5' wide across intersection
6" DWL on both sides

6" DWL until buffer starts after driveway at 1401 S 14th St



South 14th Street
5.1 km S, Nashville, TN
36°17'N 86°37'W

R3-17 (24"x18")
R3-17aP (24"x8")

begin buffer

add helmeted
biker symbol

4'-4' buffer
20' chevron spacing
delineators every 20'

10' travel lane

striped median
6" SSYL
10' hatch spacing

add narrow
after fallout (past
driveway)

end fallout before
driveway at 805 S 14th St

10'-0"

10'-0"

10'-0"

2'-0"

4'-0"

6'-0"

10'-0"

5' bike lane

10' travel lane

begin fallout before
driveway at 809 S
14th St
6" DWL

R3-17 (24"x18")
R3-17bP (24"x8")

ENDS

median taper

no parking zone
25' radius
5' hatch spacing
6" SSWL

LENORE STREET

green paint 5' wide
6" DWL on both sides

add helmeted
biker symbol
(MUTCD figure
9C-3B)

R3-17 (24"x18")
install in furnishing zone

5' bike lane

4'-2.5' buffer
20' hatch spacing
delineators every 20'

7.5' parking lane

10' travel lane

10' travel lane

6" SSWL
45 deg. from
E.O.D. (typ.)

6" DSYL
centerline

4'-2' buffer
20' hatch spacing
delineators every 20'

5' bike lane

10 m Camera: 300 m 36°09'56"N 86°44'09"W 129 m

Google 100%



SEVIER CT

SEVIER ST

add sharrow 225' from previous (SB)

add sharrow 225' from previous (NB)

add sharrow 225' from previous (SB) (just before driveway)

existing 6x7 speed cushions 20' from driveway at 708 S 14th St

add sharrow 200' from previous (NB)

add sharrow 225' from previous (SB)

S 14TH ST

W16-18P (24'x12') R4-11 (30'x30')

add sharrow approx 15' north of driveway at 801 S 14th st (NB)

DSYL to match existing from this point on





add sharrow 250' from previous (SE)

add sharrow 250' from previous (NE)

existing 6X7' speed shorons 25' west of driveway at 922 S 14th St

add sharrow 250' from previous (SB)

add sharrow -215' from previous (NB)

add sharrow 250' from previous (SB)

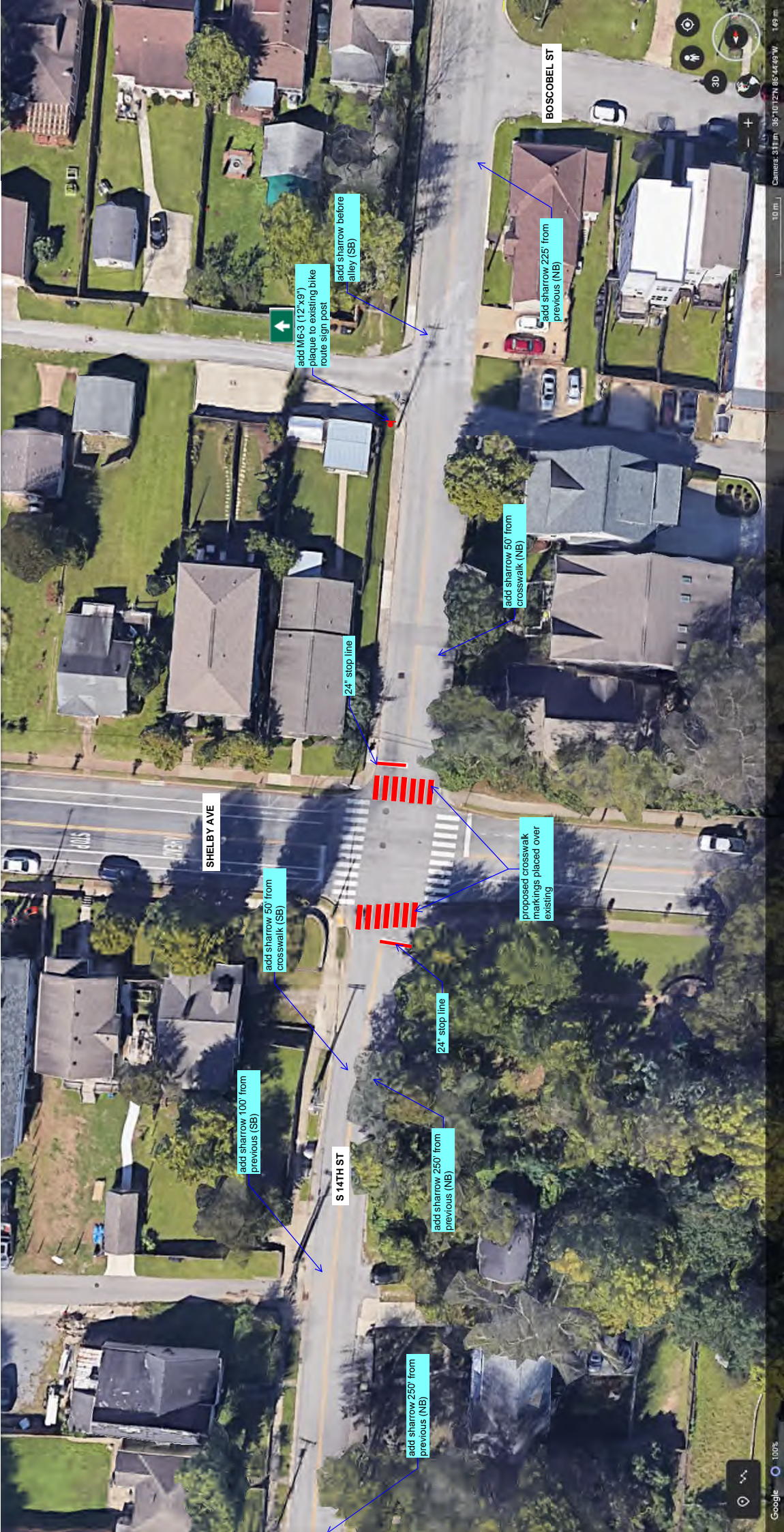
add sharrow 250' from previous (NB)

add sharrow 250' from previous (NB)

25'-0"

10 m Camera: 311 m 30° 10' 25" N 80° 54' 5" W 144 m

Google 100%



BOSCOBEL ST

add sharrow 225' from previous (NB)

add sharrow 50' from crosswalk (NE)

add sharrow before alley (SB)

add M6-3 (12"x9") plaque to existing bike route sign post

24" stop line

SHELBY AVE

proposed crosswalk markings placed over existing

add sharrow 50' from crosswalk (SB)

24" stop line

add sharrow 100' from previous (SB)

S 14TH ST

add sharrow 250' from previous (NB)

add sharrow 250' from previous (NB)



no parking zone
25' radius
6' hatch spacing
6' SSWL

7.5' parking lane
6' SSWL boundary

add sharrow 150' from
previous (SB)

LILLIAN ST

add sharrow 200' from
previous (SB)

S 14TH ST

LILLIAN ST

add sharrow 250' from
previous (NB)

add sharrow 225' from
previous (SB)

existing 6'x7' speed
cushions
37' west of driveway at
317 S 14th St

37'0"

BOSCOBEL ST

BOSCOBEL ST

6" SSWL
45 deg. from
E.O.D. (typ.)

add sharrow 200' from
previous (NB)

add sharrow 200' from
previous (NB)



add sharrow 50' from Fatherland St intersection (SB)

7.5' parking lane 6\"/>

No parking zone 25' radius 6\"/>

add 24\"/>

add 24\"/>

add sharrow 50' from Fatherland St intersection (NB)

add sharrow 250' from previous (SB)

S 14TH ST

add sharrow 250' from previous (NB)

add sharrow 250' from previous (NB) (just after the alley)

50'

50'

50'

50'

FATHERLAND ST

3D Camera: 311 m 36°10'27\"/>

Google 100%



end project at Woodland St intersection

WOODLAND ST

add sharrow 50' from Woodland St intersection (SB)

50'

24" stop line placed over existing

add sharrow 200' from previous (NB)

add sharrow 200' from previous (SB)

W16-18P (24"x12") R4-11 (30"x30") install in furnishing zone

24" stop line placed over existing

S 14TH ST

add sharrow 50' from Holly St intersection (NB)

50'

HOLLY ST

add sharrow 50' from Holly St intersection (SB)

24" stop line placed over existing