

ESTIMATED QUANTITIES

SPEED CUSHIONS

6' X 10.5' SPEED CUSHION WITH ONE ARROW	6
---	---

SIGNING

W17-1 (VAR.) "SPEED CUSHION" SIGN (30" X 30")	6
---	---

W13-1P "20 M.P.H" SIGN (18" X 18")	6
------------------------------------	---

PAVEMENT MARKINGS AND DELINEATORS

4" WHITE FLEXIBLE DELINEATOR	12
------------------------------	----

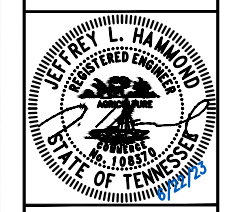
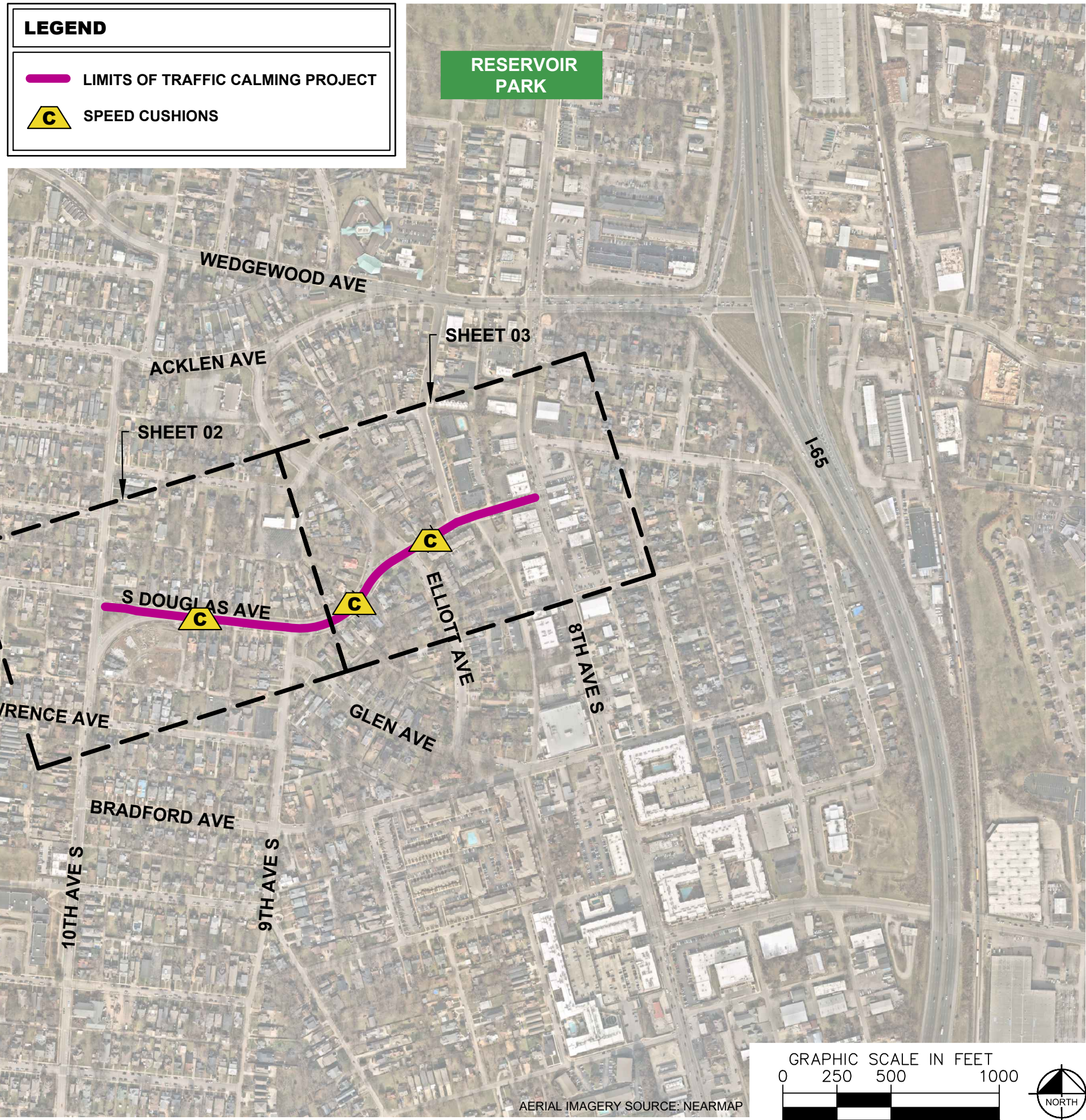
4" YELLOW FLEXIBLE DELINEATOR	36
-------------------------------	----

NOTE: ALL LOCATIONS ARE REFERENCED FROM CENTERLINE OF DRIVEWAYS OR OTHER LANDMARKS TO THE CENTER OF SPEED CUSHIONS OR SIGNS.

LEGEND

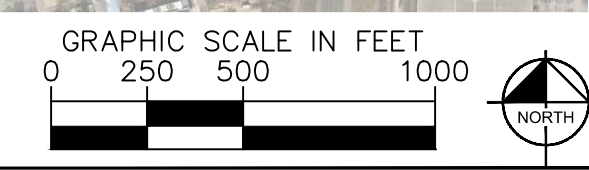
 LIMITS OF TRAFFIC CALMING PROJECT

 SPEED CUSHIONS



DESIGNED BY: JLH
DRAWN BY: GGG
CHECKED BY: NDOT
DATE: 8/29/2023
KIMLEY-HORN PROJECT NO. 118800036

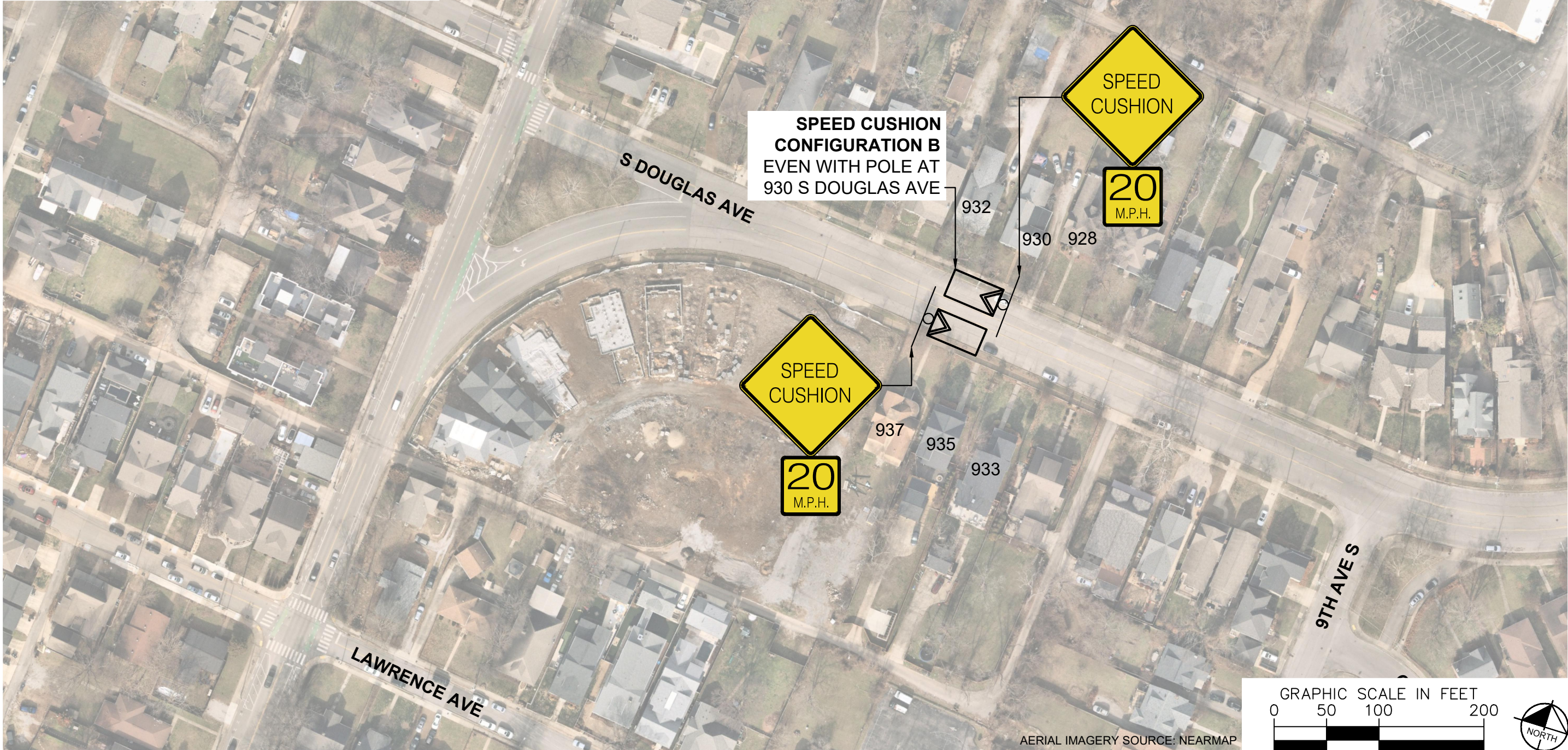
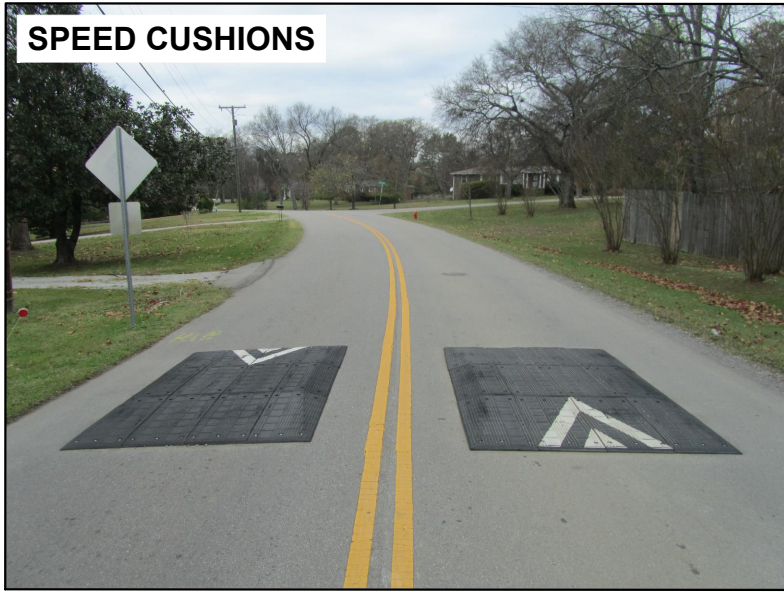
KEY
SHEET NUMBER
01



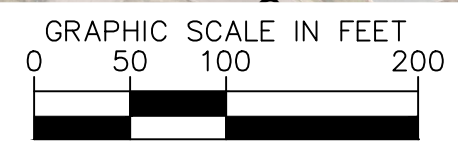
AERIAL IMAGERY SOURCE: NEARMAP

This document, together with the concepts and designs presented herein, is intended only for the specific purpose and client for which it was prepared. Reuse of and improper reliance on this document without written authorization and adaptation by Kimley-Horn and Associates, Inc. shall be without liability to Kimley-Horn and Associates, Inc.

SPEED CUSHIONS



**SPEED CUSHION CONFIGURATION B
EVEN WITH POLE AT
930 S DOUGLAS AVE**



AERIAL IMAGERY SOURCE: NEARMAP



**SOUTH DOUGLAS AVENUE
TRAFFIC CALMING**
NASHVILLE, TN

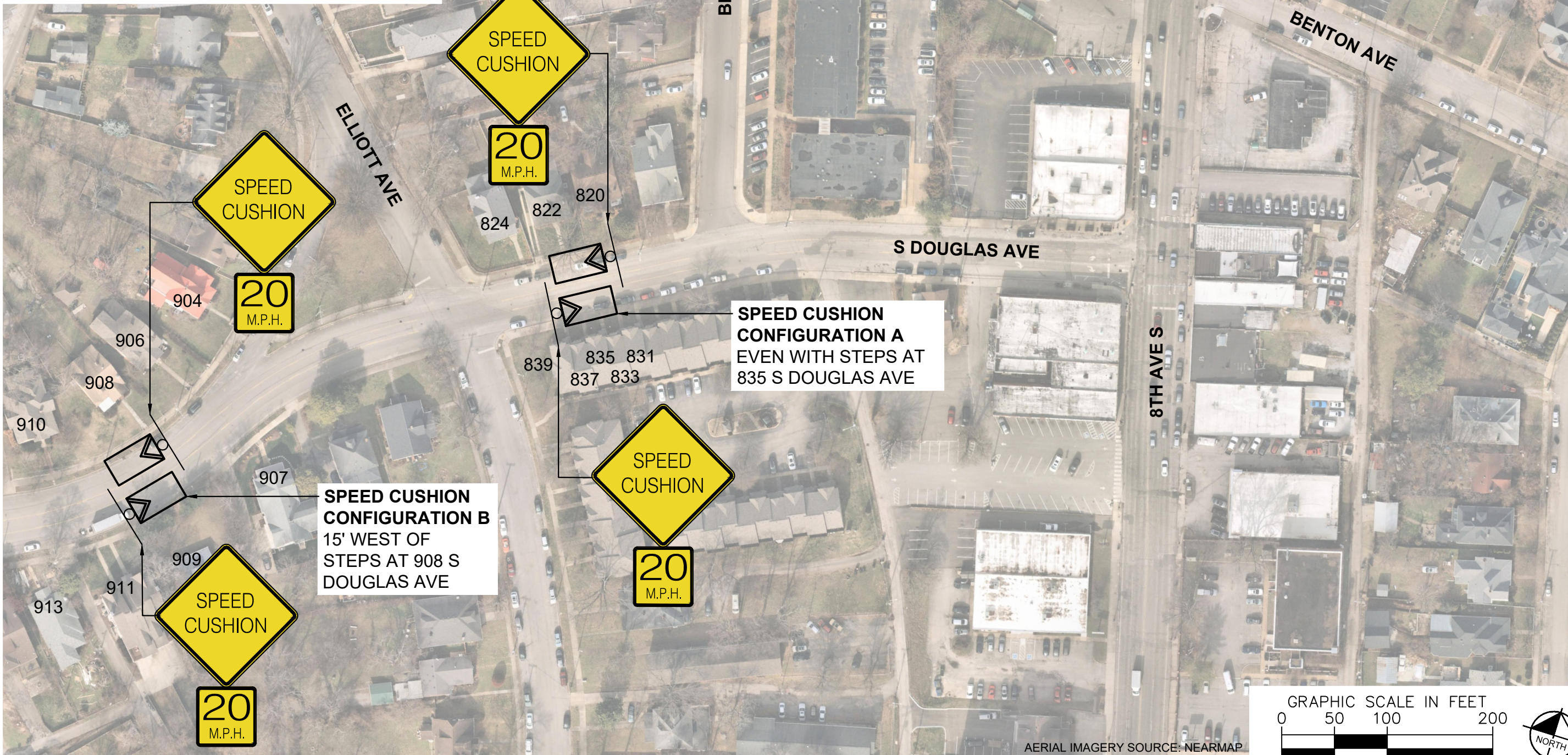
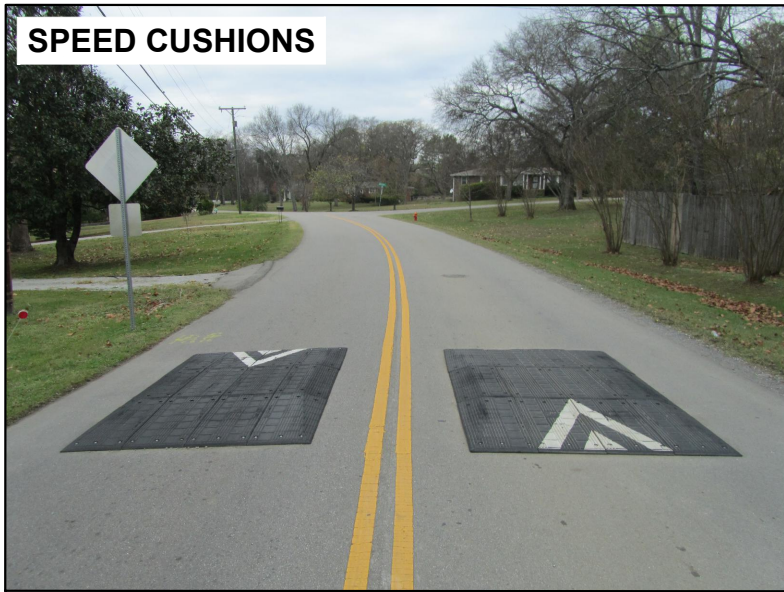


DESIGNED BY:	JLH
DRAWN BY:	GGG
CHECKED BY:	NDOT
DATE:	8/29/2023
KIMLEY-HORN PROJECT NO.:	118800036

CONCEPT
SHEET NUMBER
02

This document, together with the concepts and designs presented herein, is intended only for the specific purpose and client for which it was prepared. Reuse of and improper reliance on this document without written authorization and adaptation by Kimley-Horn and Associates, Inc. shall be without liability to Kimley-Horn and Associates, Inc.

SPEED CUSHIONS



**SPEED CUSHION CONFIGURATION A
EVEN WITH STEPS AT
835 S DOUGLAS AVE**

**SPEED CUSHION CONFIGURATION B
15' WEST OF
STEPS AT 908 S
DOUGLAS AVE**



AERIAL IMAGERY SOURCE: NEARMAP



**SOUTH DOUGLAS AVENUE
TRAFFIC CALMING**
NASHVILLE, TN

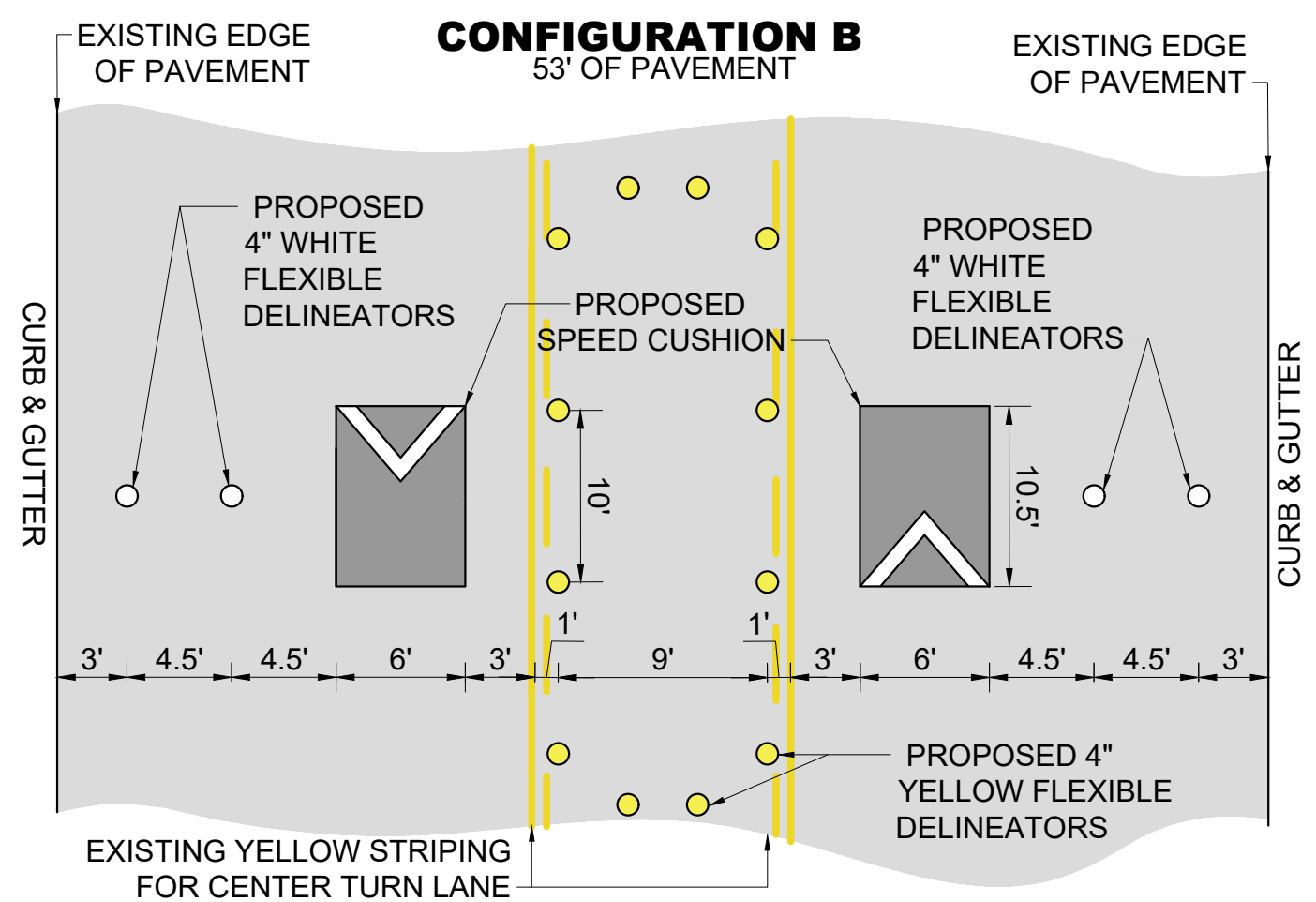
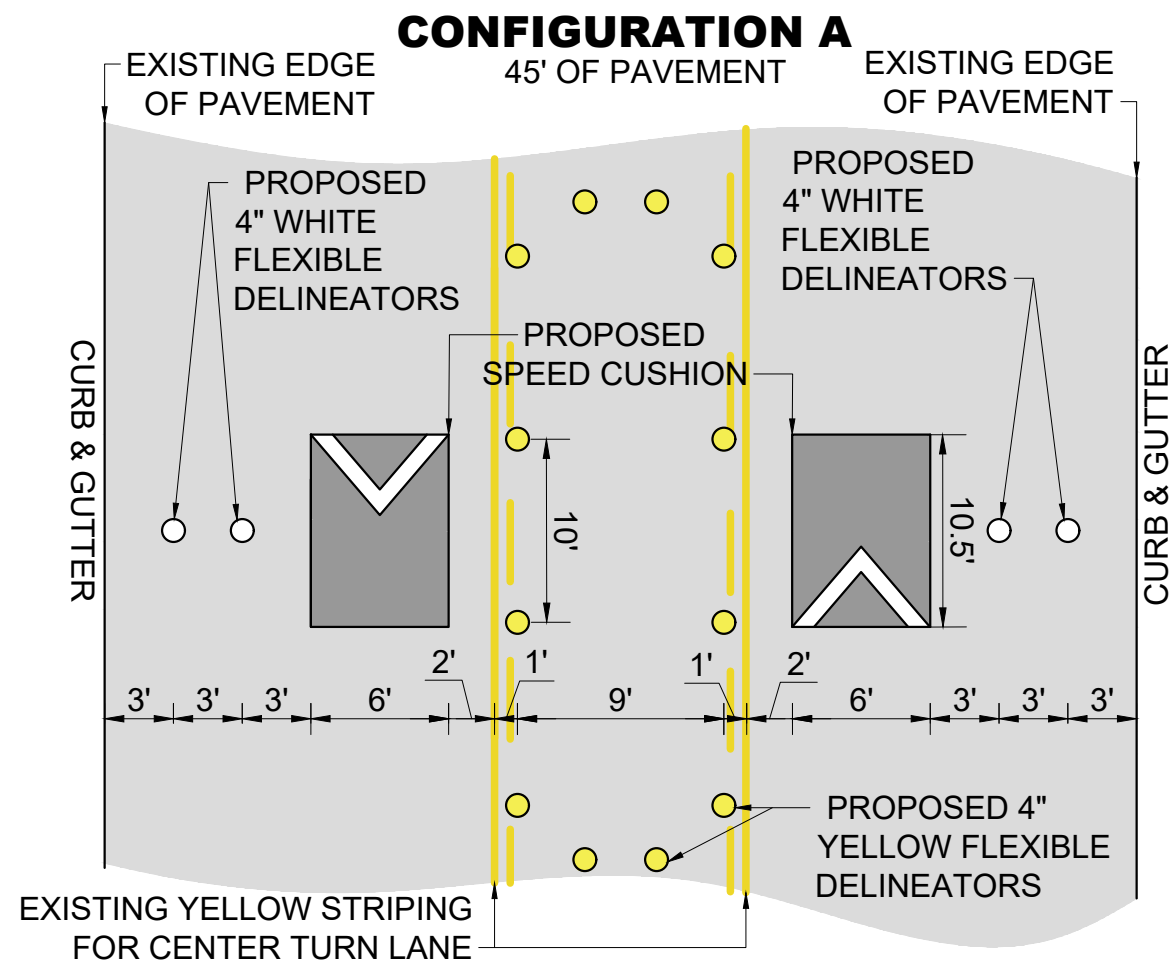


DESIGNED BY: JLH
DRAWN BY: GGG
CHECKED BY: NDOT
DATE: 8/22/2023
KIMLEY-HORN PROJECT NO. 118800036

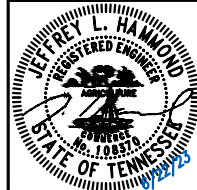
CONCEPT
SHEET NUMBER
03

This document, together with the concepts and designs presented herein, is intended only for the specific purpose and client for which it was prepared. Reuse of and improper reliance on this document without written authorization and adaptation by Kimley-Horn and Associates, Inc. shall be without liability to Kimley-Horn and Associates, Inc.

This document, together with the concepts and designs presented herein, as an instrument of service, is intended only for the specific purpose and client for which it was prepared. Reuse of and improper reliance on this document without written authorization and adaptation by Kimley-Horn and Associates, Inc. shall be without liability to Kimley-Horn and Associates, Inc.



SOUTH DOUGLAS AVENUE
TRAFFIC CALMING
 NASHVILLE, TN



DESIGNED BY:	JLH
DRAWN BY:	GGG
CHECKED BY:	NDOT
DATE:	8/22/2023
KIMLEY-HORN PROJECT NO. 118800036	

DETAIL

SHEET NUMBER
04