

METROPOLITAN GOVERNMENT OF NASHVILLE AND DAVIDSON COUNTY, TENNESSEE

BIXLER AVENUE AND DUPONT AVENUE BIKEWAY IMPROVEMENTS FROM DUPONT AVENUE TO ANDERSON LANE AND FROM GALLATIN PIKE NORTH TO MADISON PARK AUGUST, 2023



LOCATION MAP:
SCALE: 1"=500'

DRAWING INDEX

1. COVER SHEET
2. DETAILS SHEET
3. PROPOSED PAVEMENT LAYOUT
4. PROPOSED PAVEMENT LAYOUT
5. PROPOSED PAVEMENT LAYOUT
6. PROPOSED PAVEMENT LAYOUT
7. PROPOSED PAVEMENT LAYOUT
8. PROPOSED PAVEMENT LAYOUT



LDA ENGINEERING

REV	DATE	REVISION DESCRIPTION


METROPOLITAN GOVERNMENT OF NASHVILLE
AND DAVIDSON COUNTY, TENNESSEE
BIXLER AVENUE AND DUPONT AVENUE BIKEWAY IMPROVEMENTS
FROM DUPONT AVENUE TO ANDERSON LANE AND
FROM GALLATIN PIKE NORTH TO MADISON PARK

PRELIMINARY

PROJECT NUMBER:	MET002
DATE:	08-2023
SCALE:	1"=20'
DRAWN BY:	JWC
DESIGNED BY:	ZDB

SHEET TITLE:
COVER SHEET

C:\MET002\BKNMVS\MET002_000_FASTTRACKS\BIXLER_AVE_CONCEPTUAL_DESIGN_SHEET_FILES\BIXLER_COVER_3_4.DWG, 7/25/2023 8:28 AM, ZACH BARNETTE

 LDA ENGINEERING
402 BNA DRIVE SUITE 403
NASHVILLE, TENNESSEE 37217
TELEPHONE: 877-754-8254
FAX: 865-573-1352

THIS DOCUMENT AND THE IDEAS AND DESIGNS INCORPORATED HEREIN, AS AN INSTRUMENT OF PROFESSIONAL SERVICE, IS THE PROPERTY OF LDA ENGINEERING AND IS NOT TO BE USED, IN WHOLE OR IN PART, FOR ANY OTHER PROJECT WITHOUT THE WRITTEN AUTHORIZATION OF LDA ENGINEERING.



3A

MATCHLINE STA 5+50 (SEE BELOW)



3B

MATCHLINE STA 11+00 (SEE SHEET 4A)



LDA ENGINEERING

REV	DATE	REVISION DESCRIPTION

METROPOLITAN GOVERNMENT OF NASHVILLE
AND DAVIDSON COUNTY, TENNESSEE
BIXLER AVENUE BIKEWAY IMPROVEMENTS
FROM DUPONT AVE TO ANDERSON LANE

PRELIMINARY

PROJECT NUMBER: MET002
DATE: 08-2023 SCALE: 1"=20'
DRAWN BY: JWC DESIGNED BY: ZDB

SHEET TITLE:
PROPOSED PAVEMENT LAYOUT

C:\METODO2_BIKEMV\METODO2_DWG_PASTRACKS\BIXLER_AVE_CONCEPTUAL_DESIGN\SHEET FILES\BIXLER_AVE_DUPONT_AVE_SITE_6_21.DWG, 8/2/2023 3:45 PM, ZACH BARRETT

MATCHLINE STA 5+50 (SEE ABOVE)

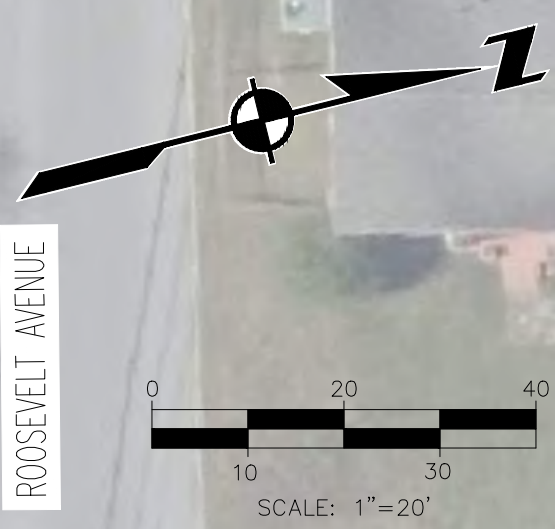
MATCHLINE STA 0+00 (SEE ABOVE)

THIS DOCUMENT AND THE IDEAS AND DESIGNS INCORPORATED HEREIN, AS AN INSTRUMENT OF PROFESSIONAL SERVICE, IS THE PROPERTY OF LDA ENGINEERING AND IS NOT TO BE USED, IN WHOLE OR IN PART, FOR ANY OTHER PROJECT WITHOUT THE WRITTEN AUTHORIZATION OF LDA ENGINEERING.

MATCHLINE 11+00 (SEE SHEET 3B)



4A

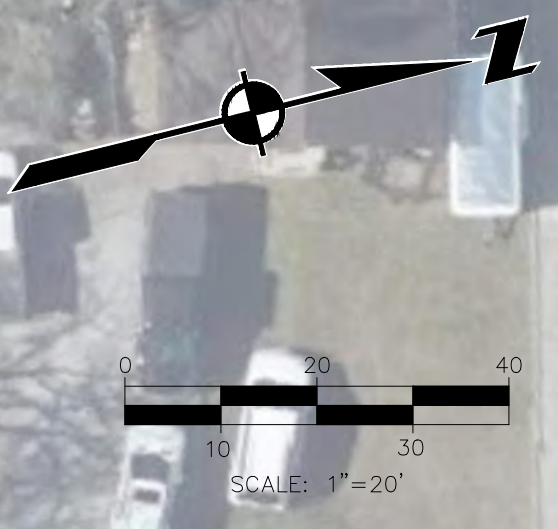


MATCHLINE 16+50 (SEE BELOW)

MATCHLINE 16+50 (SEE ABOVE)



4B



MATCHLINE 22+05 (SEE SHEET 5A)



LDA ENGINEERING

REV	DATE	REVISION DESCRIPTION

**METROPOLITAN GOVERNMENT OF NASHVILLE
AND DAVIDSON COUNTY, TENNESSEE**
BIXLER AVENUE BIKEWAY IMPROVEMENTS
FROM DUPONT AVE TO ANDERSON LANE

PRELIMINARY

PROJECT NUMBER:	MET002
DATE:	08-2023
SCALE:	1"=20'
DRAWN BY:	JWC
DESIGNED BY:	ZDB

SHEET TITLE:
PROPOSED PAVEMENT LAYOUT

C:\MET002_BKEMW\MET002_000_PASTRACKS\BIXLER_AVE\CONCEPTUAL DESIGN\SHEET FILES\BIXLER_AVE_SITE_6_21.DWG, 8/2/2023 3:21 PM, ZACH BARNETTE

THIS DOCUMENT AND THE IDEAS AND DESIGNS INCORPORATED HEREIN, AS AN INSTRUMENT OF PROFESSIONAL SERVICE, IS THE PROPERTY OF LDA ENGINEERING AND IS NOT TO BE USED, IN WHOLE OR IN PART, FOR ANY OTHER PROJECT WITHOUT THE WRITTEN AUTHORIZATION OF LDA ENGINEERING.



6A



LDA ENGINEERING

REV	DATE	REVISION DESCRIPTION

METROPOLITAN GOVERNMENT OF NASHVILLE
AND DAVIDSON COUNTY, TENNESSEE
DUPONT AVENUE BIKEWAY IMPROVEMENTS
FROM GALLATIN PIKE NORTH TO
MADISON PARK



6B



C:\METODO2_BIWAYS\METODO2_D00_PASTRICKS\BIKELR_AVE_CONCEPTUAL_DESIGN\SHEET FILES\BIKELR_AVE_SITE_6_21.DWG, 6/2/2023 3:22 PM, ZACH BARBETTE

PRELIMINARY

PROJECT NUMBER:	MET002
DATE:	08-2023
SCALE:	1"=20'
DRAWN BY:	JWC
DESIGNED BY:	ZDB

SHEET TITLE:
PROPOSED PAVEMENT LAYOUT

THIS DOCUMENT AND THE IDEAS AND DESIGNS INCORPORATED HEREIN, AS AN INSTRUMENT OF PROFESSIONAL SERVICE, IS THE PROPERTY OF LDA ENGINEERING AND IS NOT TO BE USED, IN WHOLE OR IN PART, FOR ANY OTHER PROJECT WITHOUT THE WRITTEN AUTHORIZATION OF LDA ENGINEERING.

C:\MET002_BKRWIS\MET002_DWG_PASTRACKS\BIXLER AVE\CONCEPTUAL DESIGN\SHEET FILES\BIXLER AVE_SITE_6_21.DWG, 6/2/2023 3:23 PM, ZACH BARNETTE



7A

7B



REV	DATE	REVISION DESCRIPTION

**METROPOLITAN GOVERNMENT OF NASHVILLE
AND DAVIDSON COUNTY, TENNESSEE**
DUPONT AVENUE BIKEWAY IMPROVEMENTS
FROM GALLATIN PIKE NORTH TO
MADISON PARK

PRELIMINARY

PROJECT NUMBER: MET002	SCALE: 1"=20'
DATE: 08-2023	DESIGNED BY: ZDB
DRAWN BY: JWC	

SHEET TITLE:
PROPOSED PAVEMENT LAYOUT

THIS DOCUMENT AND THE IDEAS AND DESIGNS INCORPORATED HEREIN, AS AN INSTRUMENT OF PROFESSIONAL SERVICE, IS THE PROPERTY OF LDA ENGINEERING AND IS NOT TO BE USED, IN WHOLE OR IN PART, FOR ANY OTHER PROJECT WITHOUT THE WRITTEN AUTHORIZATION OF LDA ENGINEERING.

