

METROPOLITAN GOVERNMENT OF NASHVILLE AND DAVIDSON COUNTY, TENNESSEE

CUNNIFF PARKWAY BIKEWAY IMPROVEMENTS FROM DICKERSON PIKE TO GREEN ACRES DRIVE NOVEMBER 2023



LOCATION MAP
SCALE: 1"=1000'

DRAWING INDEX

1. COVER SHEET
2. TYPICAL DETAILS
3. PROPOSED LAYOUT
4. PROPOSED LAYOUT
5. PROPOSED LAYOUT
6. PROPOSED LAYOUT
7. PROPOSED LAYOUT



LDA ENGINEERING

REV	DATE	REVISION DESCRIPTION

METROPOLITAN GOVERNMENT OF NASHVILLE
AND DAVIDSON COUNTY, TENNESSEE
CUNNIFF PARKWAY BIKEWAY IMPROVEMENTS
FROM DICKERSON PIKE TO GREEN ACRES DRIVE



PROJECT NUMBER: MET008	SCALE:
DATE: 11-2023	DESIGNED BY: JML
DRAWN BY: JEP	

SHEET TITLE:
COVER SHEET

C:\MET002\BREVIEWS\MET002_000_FASTTRACKS\CUNNIFF PARKWAY\CONCEPTUAL DESIGN\SHEET FILES\CUNNIFF PARK COVERING_11/8/2023 12:19 PM.MAI.YOUNG

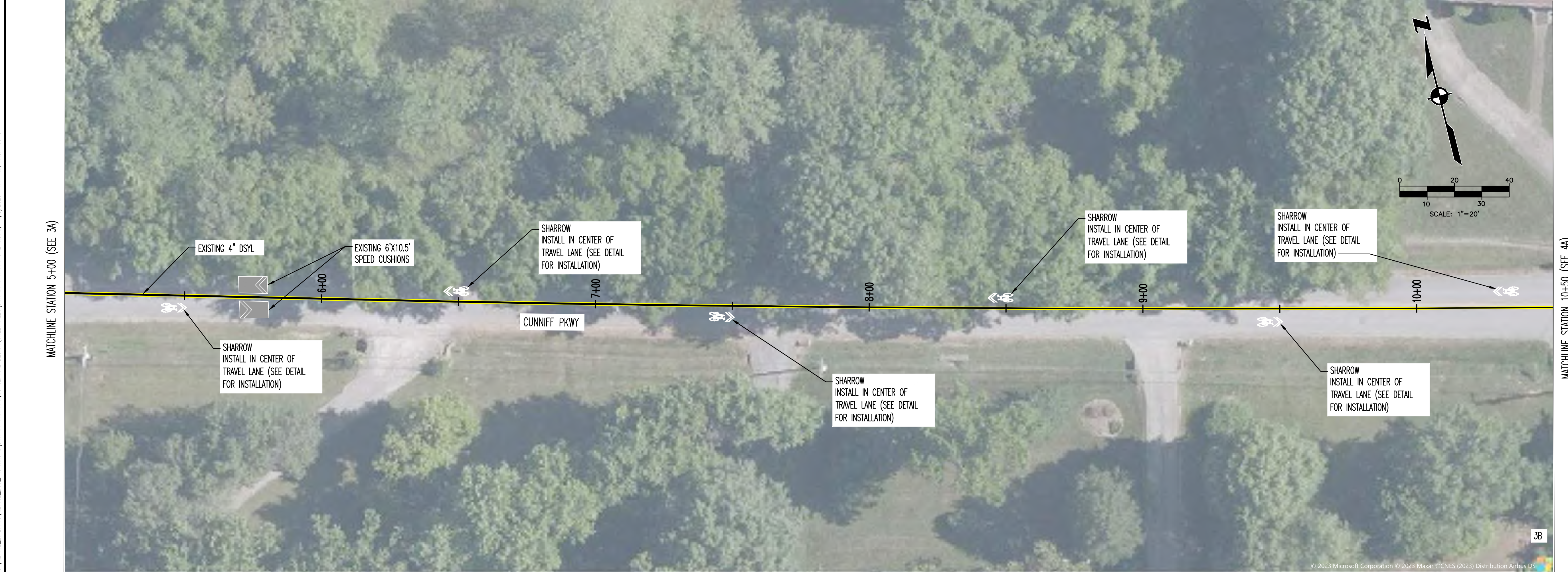


LDA ENGINEERING
402 BNA DRIVE SUITE 403
NASHVILLE, TENNESSEE 37217
TELEPHONE: 877-754-8254
FAX: 865-573-1352

C:\MET002\BUREAU\MET002_000_FASTTRACKS\CUNIFF PARKWAY\CONCEPTUAL DESIGN\SHEET FILES\CUNIFF PARKWAY SITE CONING_11/8/2023 11:40 AM.MXD JLD YOUNG



MATCHLINE STATION 5+00 (SEE 3B)



MATCHLINE STATION 10+50 (SEE 4A)



REV	DATE	REVISION DESCRIPTION

METROPOLITAN GOVERNMENT OF NASHVILLE
AND DAVIDSON COUNTY, TENNESSEE
CUNIFF PARKWAY BIKEWAY IMPROVEMENTS
FROM DICKERSON PIKE TO GREEN ACRES DRIVE

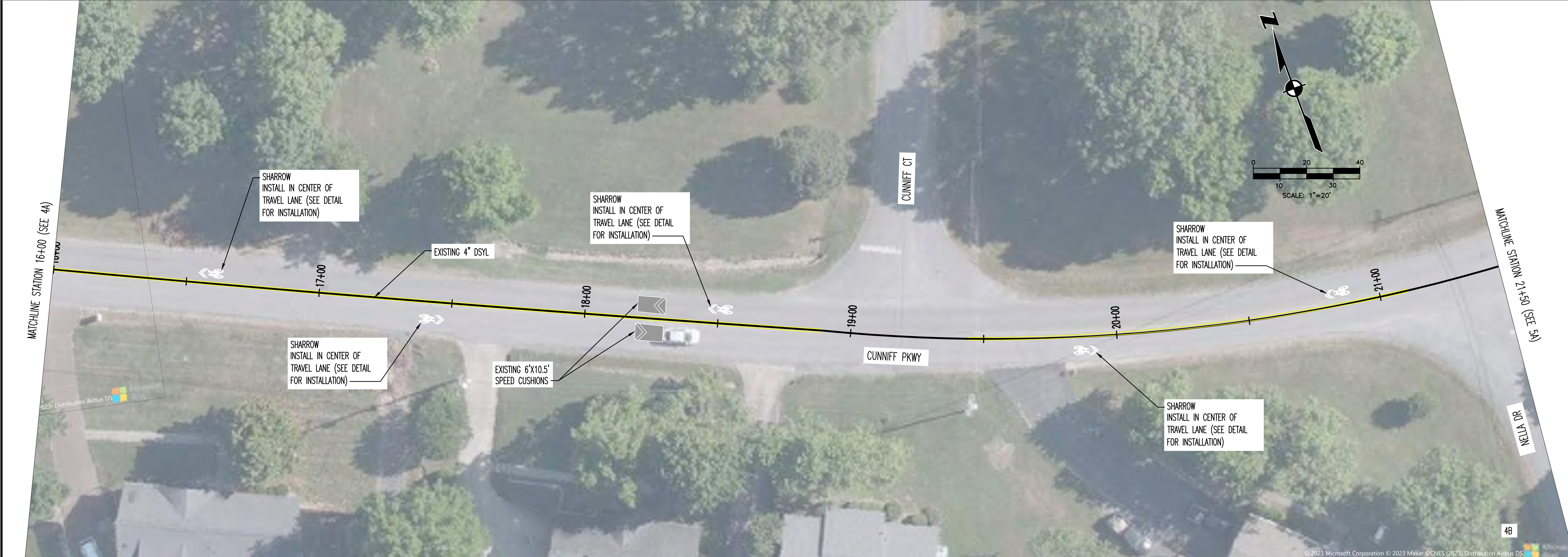
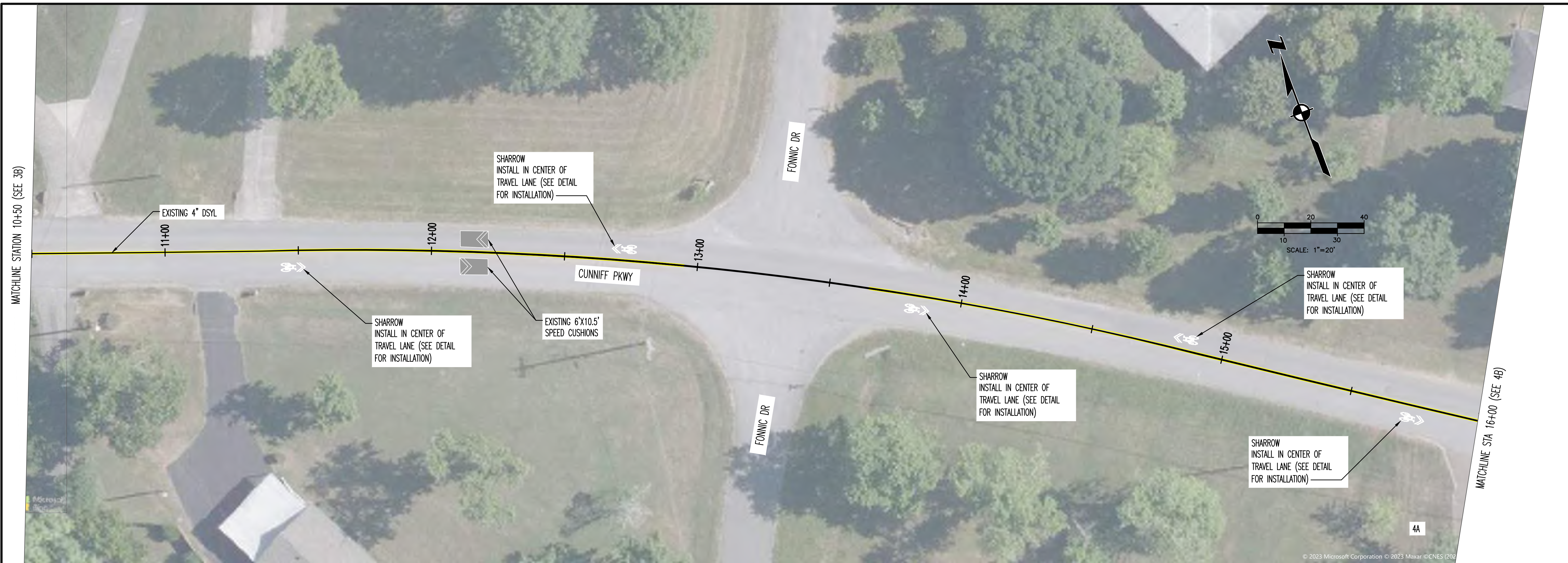


PROJECT NUMBER: MET008
DATE: 11-2023 SCALE: 1"=20'
DRAWN BY: JEP DESIGNED BY: JML

SHEET TITLE:
PROPOSED LAYOUT

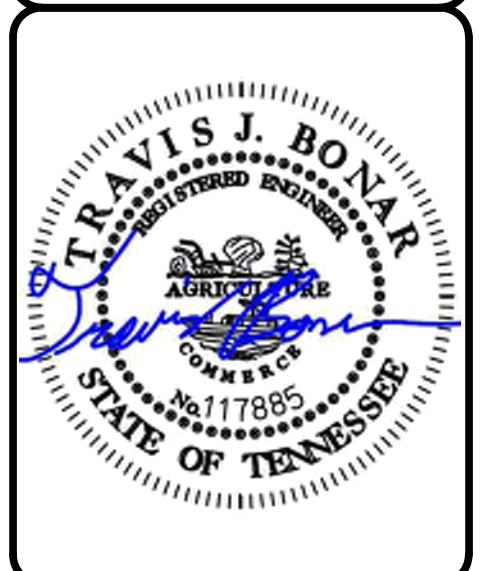
THIS DOCUMENT AND THE IDEAS AND DESIGNS INCORPORATED HEREIN, AS AN INSTRUMENT OF PROFESSIONAL SERVICE, IS THE PROPERTY OF LDA ENGINEERING AND IS NOT TO BE USED, IN WHOLE OR IN PART, FOR ANY OTHER PROJECT WITHOUT THE WRITTEN AUTHORIZATION OF LDA ENGINEERING.

© 2023 Microsoft Corporation © 2023 Maxar © CNES (2023) Distribution Airbus DS



REV	DATE	REVISION DESCRIPTION

**METROPOLITAN GOVERNMENT OF NASHVILLE
 AND DAVIDSON COUNTY, TENNESSEE**
 CUNNIFF PARKWAY BIKEWAY IMPROVEMENTS
 FROM DICKERSON PIKE TO GREEN ACRES DRIVE



PROJECT NUMBER: MET008
 DATE: 11-2023 SCALE: 1"=20'
 DRAWN BY: JEP DESIGNED BY: JML

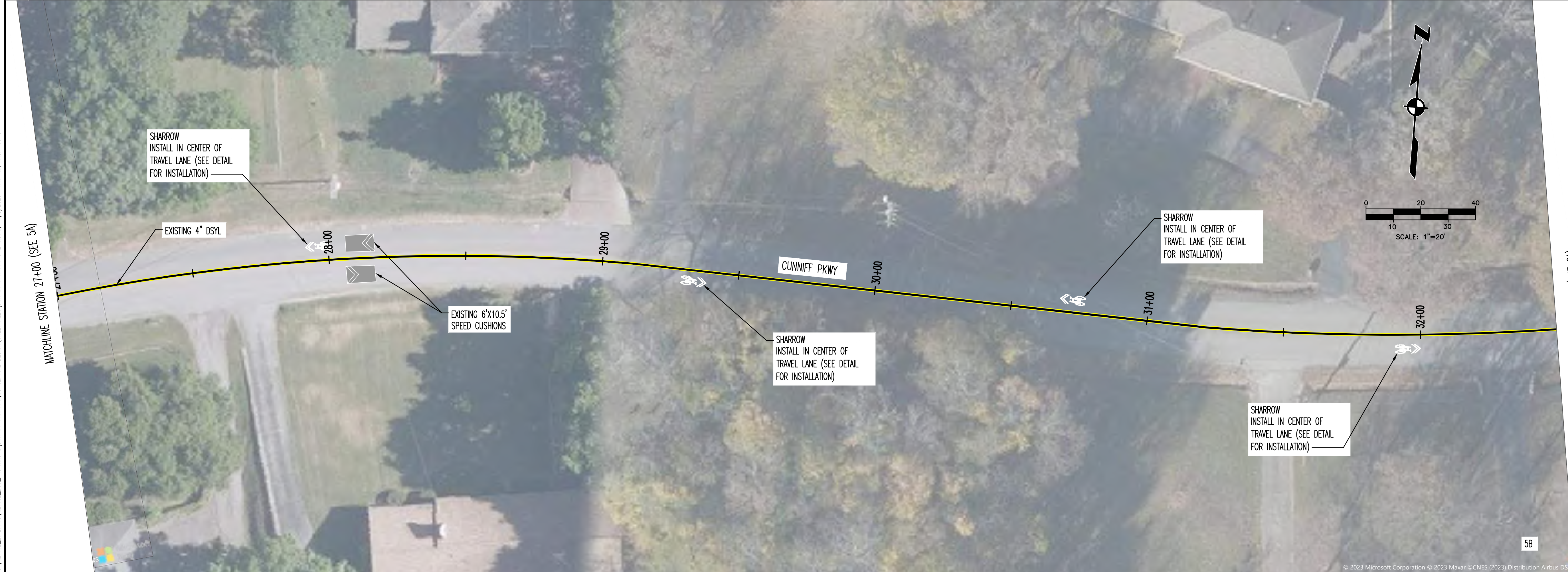
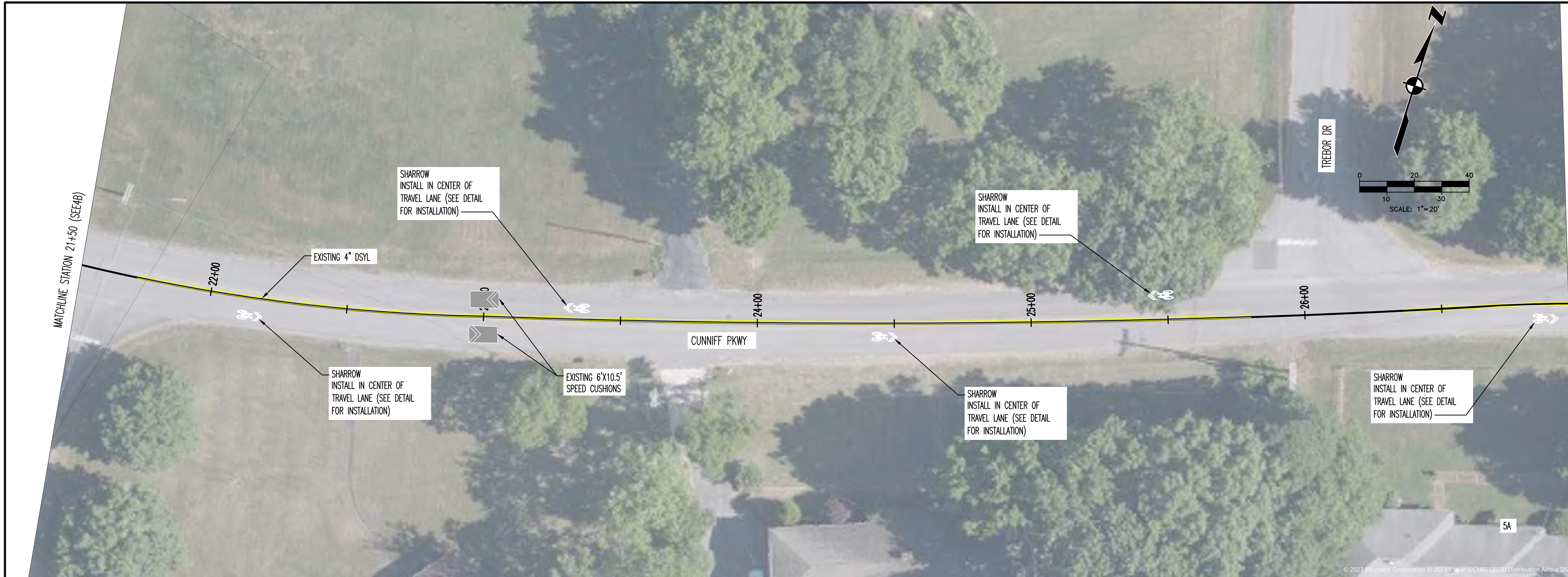
SHEET TITLE:
 PROPOSED LAYOUT

C:\MET002\BREVIEWS\MET002_000_FASTTRACKS\CUNNIFF PARKWAY\CONCEPTUAL DESIGN\SHEET FILES\CUNNIFF PARKWAY SITE CONG. 11/8/2023 11:43 AM JML YOUNG

THIS DOCUMENT AND THE IDEAS AND DESIGNS INCORPORATED HEREIN, AS AN INSTRUMENT OF PROFESSIONAL SERVICE, IS THE PROPERTY OF LDA ENGINEERING AND IS NOT TO BE USED, IN WHOLE OR IN PART, FOR ANY OTHER PROJECT WITHOUT THE WRITTEN AUTHORIZATION OF LDA ENGINEERING.

© 2023 Microsoft Corporation © 2023 Maxar © CNES (2023) Distribution Airbus DS

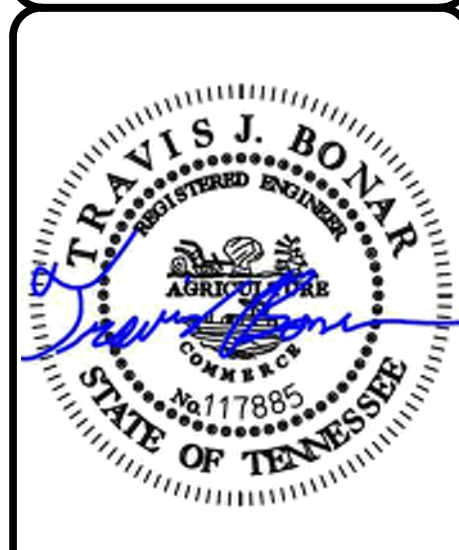
C:\MET002\BUREAU\MET002_000_PASTRACKS\CUNIFF PARKWAY\CONCEPTUAL DESIGN\SHEET FILES\CUNIFF PARKWAY SITE.CDWG, 11/8/2023 11:45 AM, MJD, YOUNG



LDA ENGINEERING

REV	DATE	REVISION DESCRIPTION

METROPOLITAN GOVERNMENT OF NASHVILLE
AND DAVIDSON COUNTY, TENNESSEE
CUNIFF PARKWAY BIKEWAY IMPROVEMENTS
FROM DICKERSON PIKE TO GREEN ACRES DRIVE

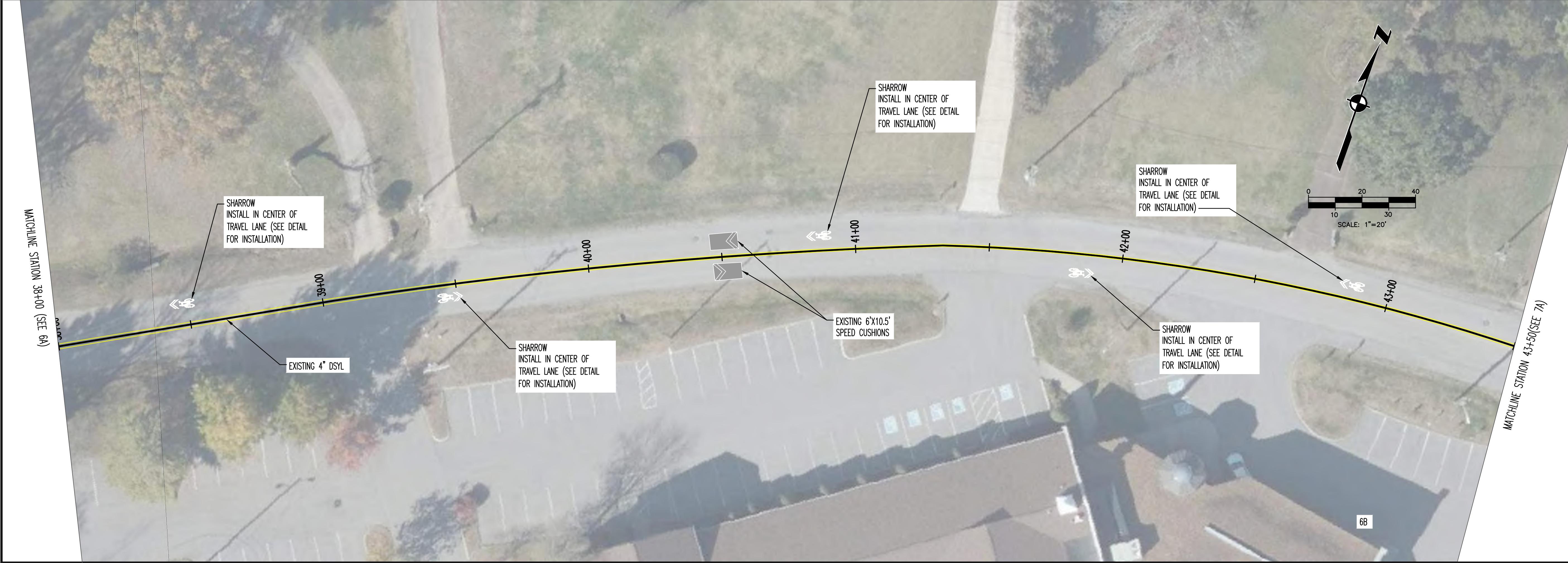
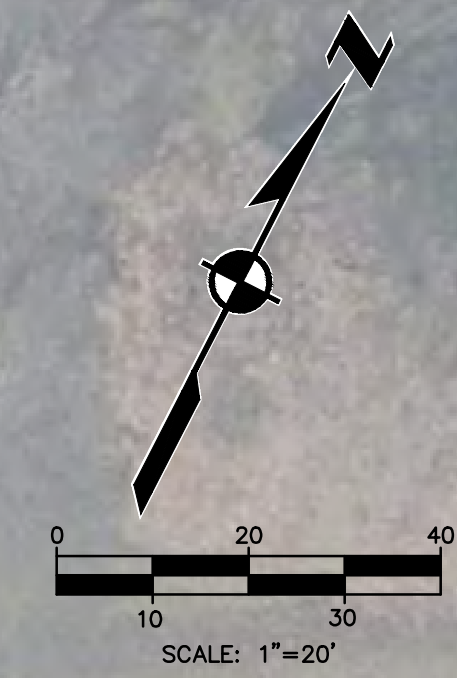
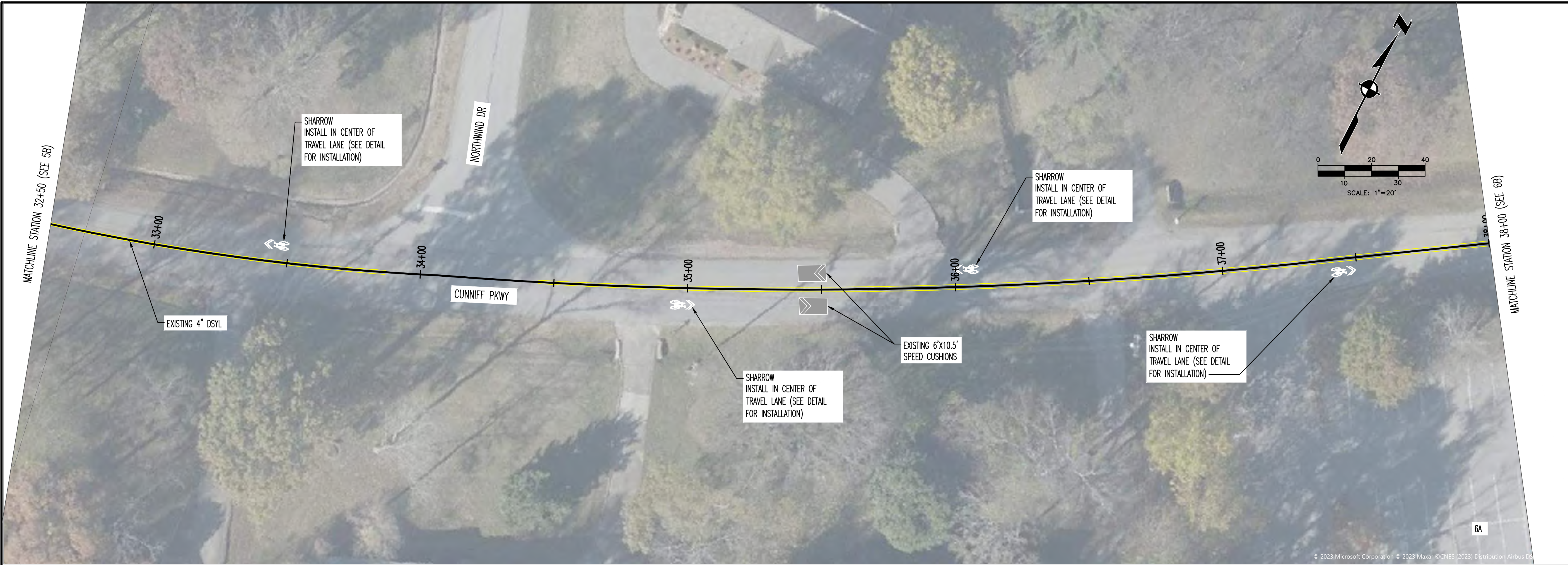


PROJECT NUMBER: MET008
DATE: 11-2023 SCALE: 1"=20'
DRAWN BY: JEP DESIGNED BY: JML

SHEET TITLE:
PROPOSED LAYOUT

THIS DOCUMENT AND THE IDEAS AND DESIGNS INCORPORATED HEREIN, AS AN INSTRUMENT OF PROFESSIONAL SERVICE, IS THE PROPERTY OF LDA ENGINEERING AND IS NOT TO BE USED, IN WHOLE OR IN PART, FOR ANY OTHER PROJECT WITHOUT THE WRITTEN AUTHORIZATION OF LDA ENGINEERING.

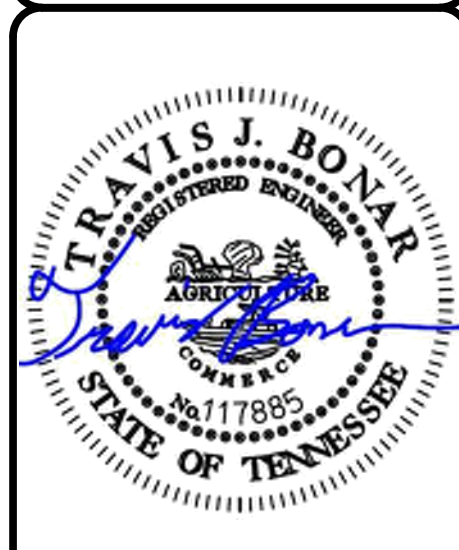
© 2023 Microsoft Corporation © 2023 Maxar © CNES (2023) Distribution Airbus DS



LDA ENGINEERING

REV	DATE	REVISION DESCRIPTION

METROPOLITAN GOVERNMENT OF NASHVILLE
 AND DAVIDSON COUNTY, TENNESSEE
 CUNNIFF PARKWAY BIKEWAY IMPROVEMENTS
 FROM DICKERSON PIKE TO GREEN ACRES DRIVE



PROJECT NUMBER: MET008
 DATE: 11-2023 SCALE: 1"=20'
 DRAWN BY: JEP DESIGNED BY: JML

SHEET TITLE:
 PROPOSED LAYOUT

C:\MET002\BREVIS\MET002_DWG_PASTRACKS\CUNNIFF PARKWAY CONCEPTUAL DESIGN SHEET FILES\CUNNIFF PARKWAY SITE.CADD, 11/8/2023 11:46 AM, MWS, YOUNG

THIS DOCUMENT AND THE IDEAS AND DESIGNS INCORPORATED HEREIN, AS AN INSTRUMENT OF PROFESSIONAL SERVICE, IS THE PROPERTY OF LDA ENGINEERING AND IS NOT TO BE USED, IN WHOLE OR IN PART, FOR ANY OTHER PROJECT WITHOUT THE WRITTEN AUTHORIZATION OF LDA ENGINEERING.

