

FILE NO.	891704370.03
DATE:	12/10/2018
DESIGNED BY:	JEG
DRAWN BY:	DKC
CHECKED BY:	BJT

REVISION BLOCK	
DATE:	



SEE SHEET 4
MATCH LINE

SEE SHEET 4
MATCH LINE

SEE SHEET 4
MATCH LINE

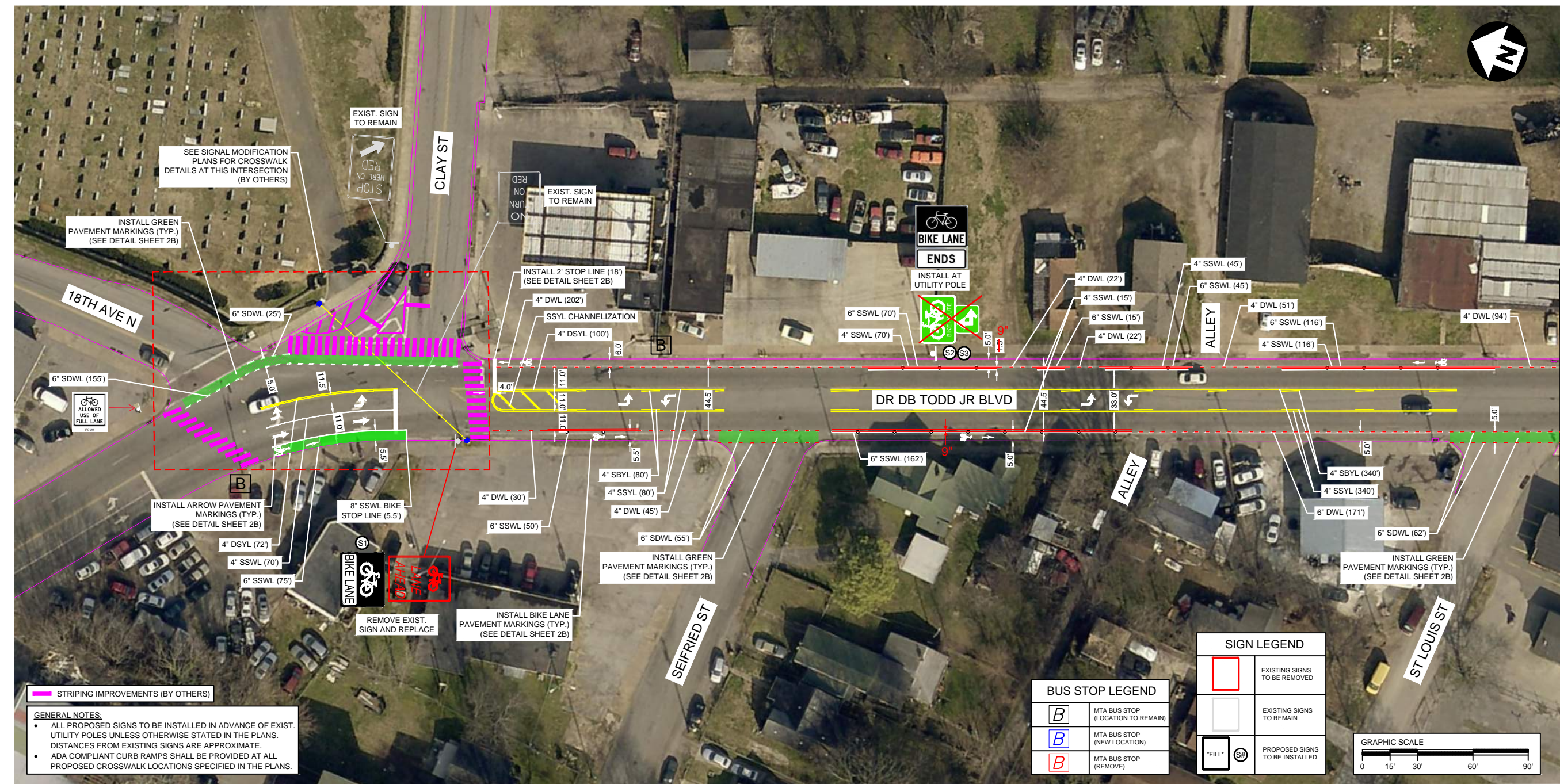
METROPOLITAN GOVERNMENT
OF NASHVILLE & DAVIDSON COUNTY, TENNESSEE
PUBLIC WORKS DEPARTMENT
ENGINEERING DIVISION

DR. D.B. TODD JR. BLVD.

Proposed Pavement Marking and Signing Plan

SCALE: 1"=30'

SHEET 3 OF 10

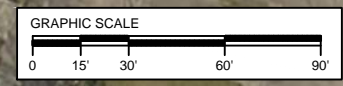


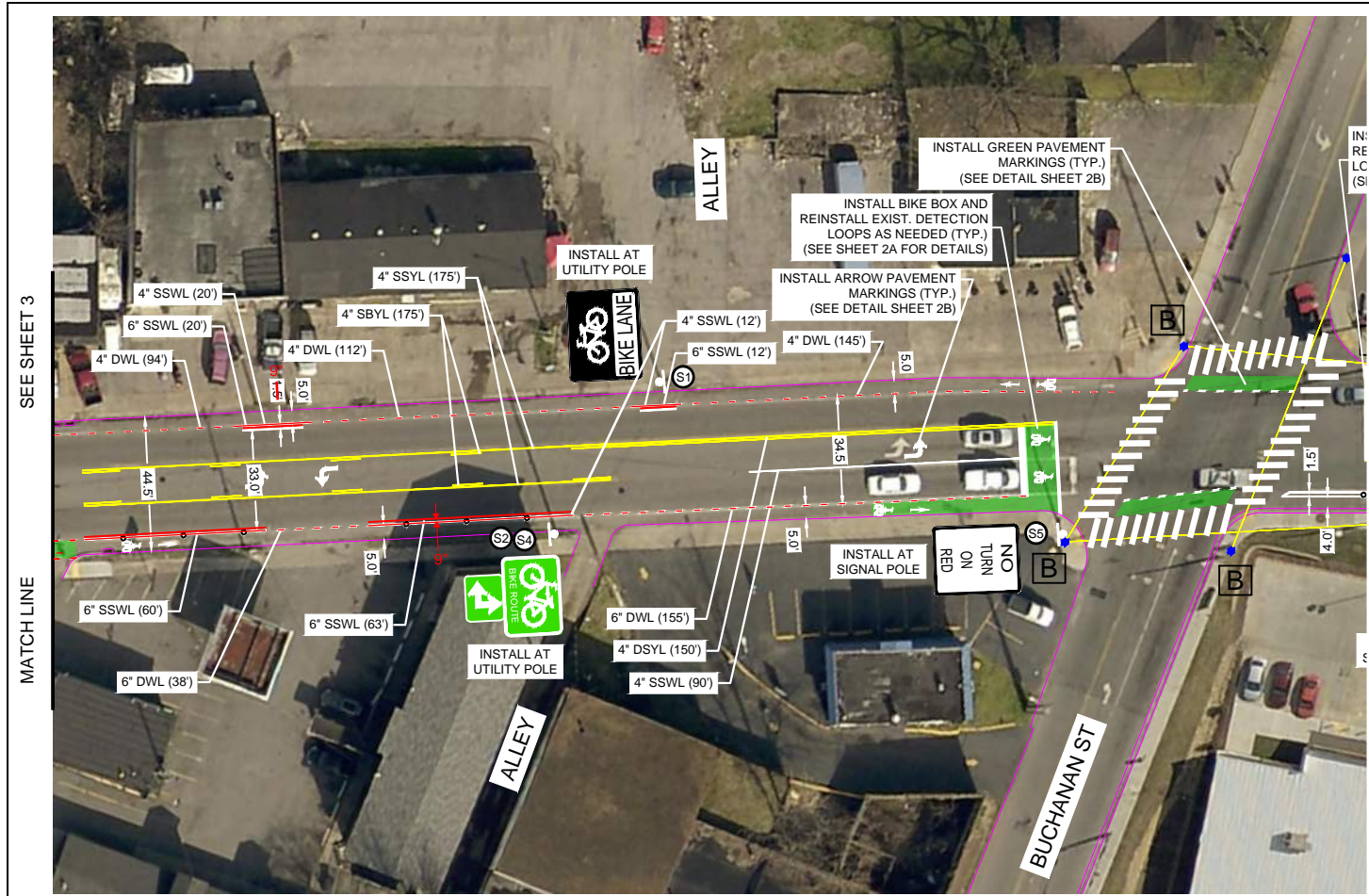
GENERAL NOTES:

- ALL PROPOSED SIGNS TO BE INSTALLED IN ADVANCE OF EXIST. UTILITY POLES UNLESS OTHERWISE STATED IN THE PLANS. DISTANCES FROM EXISTING SIGNS ARE APPROXIMATE.
- ADA COMPLIANT CURB RAMPS SHALL BE PROVIDED AT ALL PROPOSED CROSSWALK LOCATIONS SPECIFIED IN THE PLANS.

SIGN LEGEND	
	EXISTING SIGNS TO BE REMOVED
	EXISTING SIGNS TO REMAIN
	PROPOSED SIGNS TO BE INSTALLED

BUS STOP LEGEND	
	MTA BUS STOP (LOCATION TO REMAIN)
	MTA BUS STOP (NEW LOCATION)
	MTA BUS STOP (REMOVE)





SEE SHEET 3

MATCH LINE

SEE THIS SHEET

MATCH LINE

FILE NO.	891704370.03
DATE:	12/10/2018
DESIGNED BY:	JEG
DRAWN BY:	DKC
CHECKED BY:	BJT

REVISION BLOCK	
DATE:	

SEE THIS SHEET



MATCH LINE

SEE SHEET 5

MATCH LINE

METROPOLITAN GOVERNMENT
OF NASHVILLE & DAVIDSON COUNTY, TENNESSEE
PUBLIC WORKS DEPARTMENT
ENGINEERING DIVISION

DR. D.B. TODD JR. BLVD.

Proposed Pavement Marking and Signing Plan

SCALE: 1"=30'

SHEET 4 OF 10