

ESTIMATED QUANTITIES

SPEED CUSHIONS

6' X 14' SPEED CUSHION WITH ONE ARROW	32
---------------------------------------	----

SIGNING

W17-1 (VAR.) "SPEED CUSHION" SIGN (30" X 30")	6
---	---

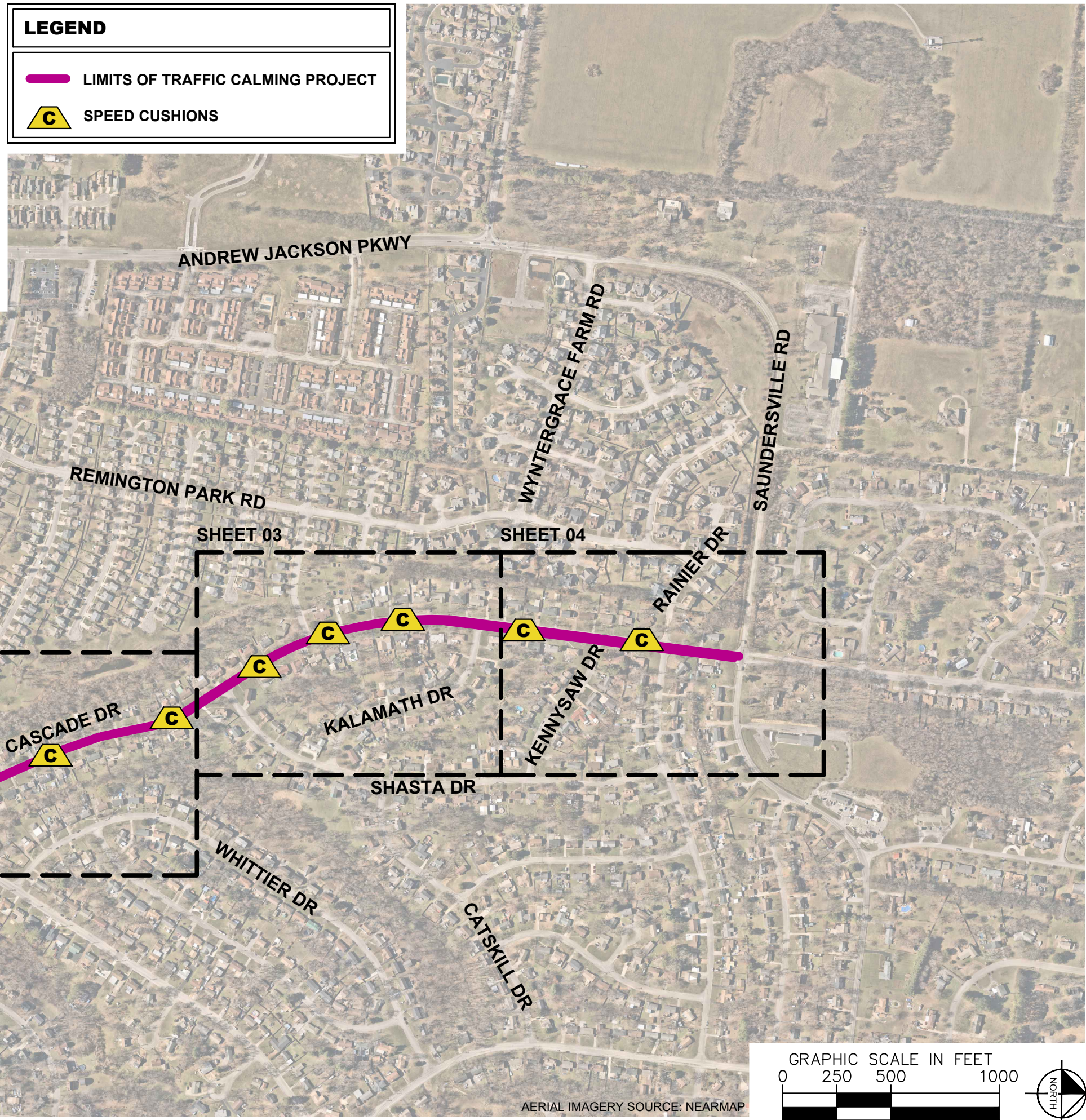
W17-1 (VAR.) "SPEED CUSHIONS AHEAD" SIGN (30" X 30")	4
--	---

W13-1P "20 M.P.H" SIGN (18" X 18")	10
------------------------------------	----

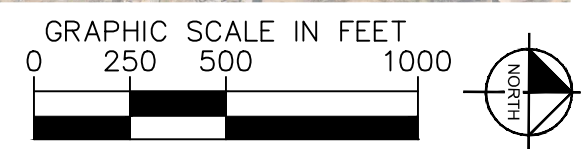
NOTE: ALL LOCATIONS ARE REFERENCED FROM CENTERLINE OF DRIVEWAYS OR OTHER LANDMARKS TO THE CENTER OF SPEED CUSHIONS OR SIGNS.

LEGEND

-  LIMITS OF TRAFFIC CALMING PROJECT
-  SPEED CUSHIONS



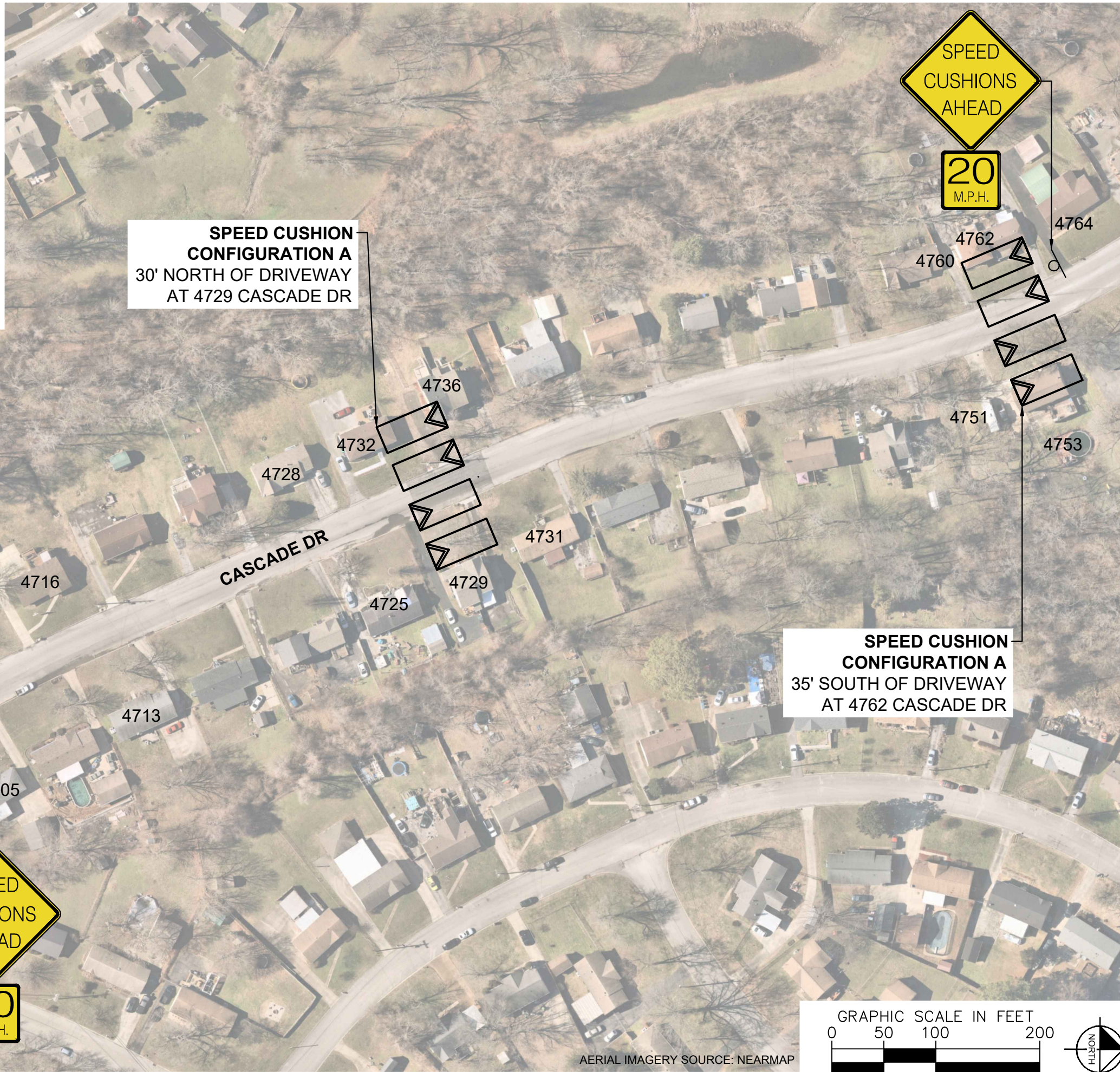
DESIGNED BY:	DHT
DRAWN BY:	DKW
CHECKED BY:	NDOT
DATE:	1/29/2024
KIMLEY-HORN PROJECT NO. 11890046	



KEY
SHEET NUMBER
01

This document, together with the concepts and designs presented herein, is intended only for the specific purpose and client for which it was prepared. Reuse of and/or reliance on this document without written authorization and adaptation by Kimley-Horn and Associates, Inc. shall be without liability to Kimley-Horn and Associates, Inc.

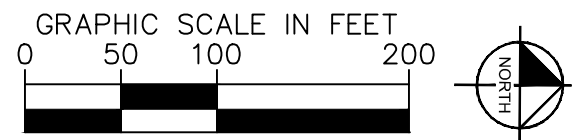
SPEED CUSHIONS



SPEED CUSHION CONFIGURATION A
30' NORTH OF DRIVEWAY
AT 4729 CASCADE DR

SPEED CUSHION CONFIGURATION A
40' SOUTH OF DRIVEWAY
AT 4712 CASCADE DR

SPEED CUSHION CONFIGURATION A
35' SOUTH OF DRIVEWAY
AT 4762 CASCADE DR



AERIAL IMAGERY SOURCE: NEARMAP

NDOT

CASCADE DRIVE
TRAFFIC CALMING
NASHVILLE, TN



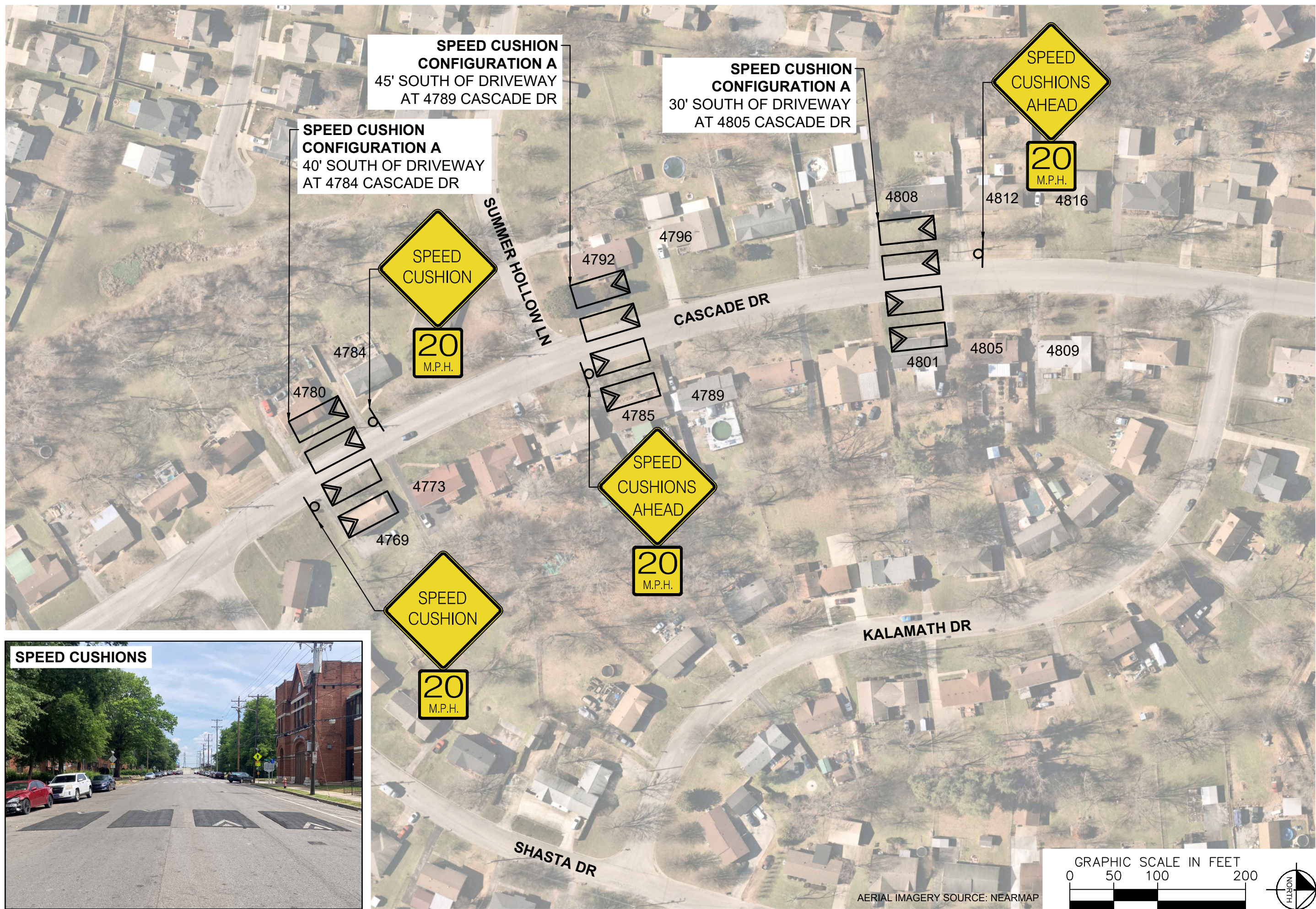
Kimley»Horn

DESIGNED BY:	DHT
DRAWN BY:	DKW
CHECKED BY:	NDOT
DATE:	1/29/2024
KIMLEY-HORN PROJECT NO.:	118900046

CONCEPT
SHEET NUMBER
02

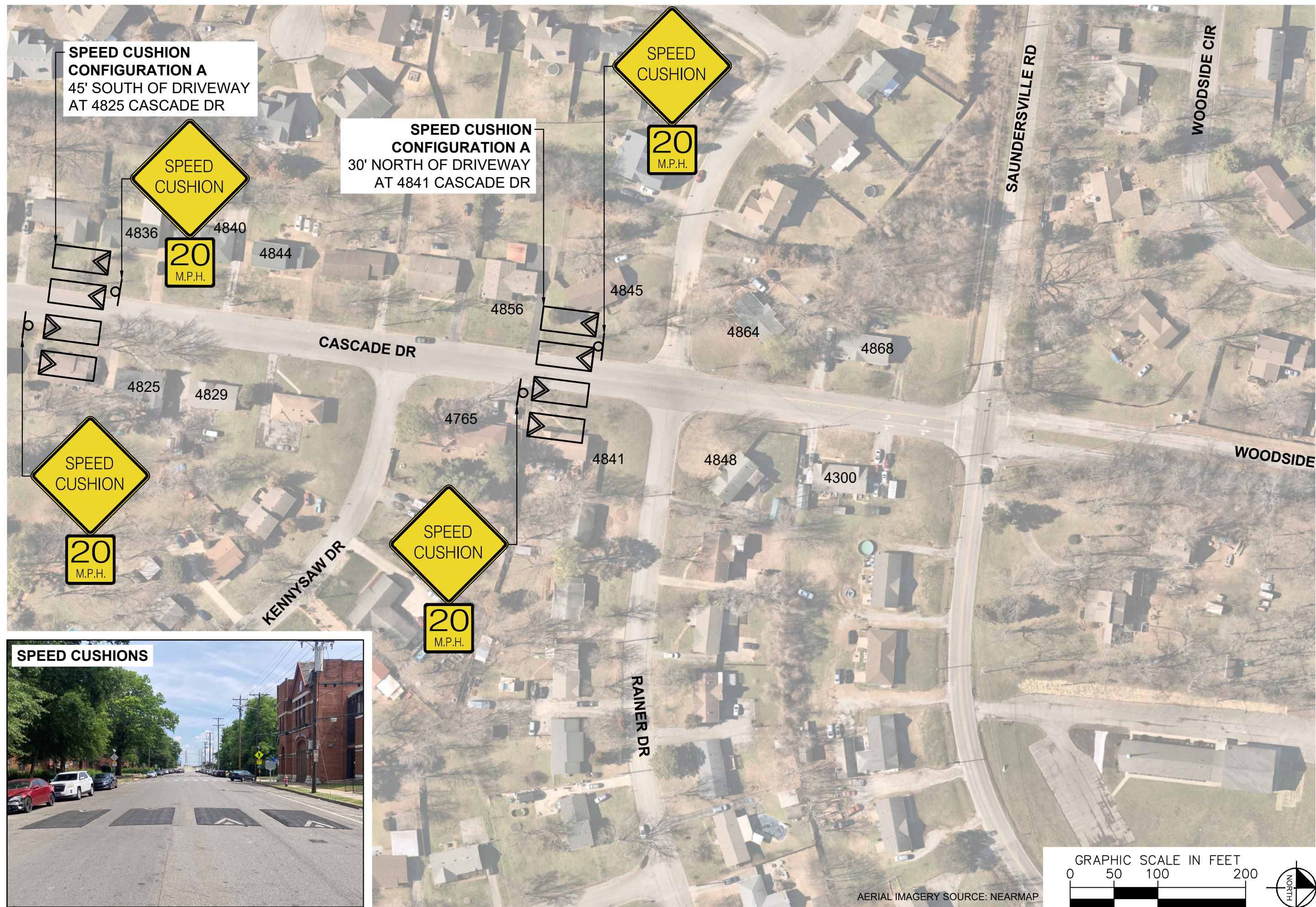
This document, together with the concepts and designs presented herein, is intended only for the specific purpose and client for which it was prepared. Reuse of and improper reliance on this document without written authorization and adaptation by Kimley-Horn and Associates, Inc. shall be without liability to Kimley-Horn and Associates, Inc.

This document, together with the concepts and designs presented herein, is intended only for the specific purpose and client for which it was prepared. Reuse of and improper reliance on this document without written authorization and adaptation by Kimley-Horn and Associates, Inc. shall be without liability to Kimley-Horn and Associates, Inc.



DESIGNED BY:	DHT
DRAWN BY:	DKW
CHECKED BY:	NDOT
DATE:	1/29/2024
KIMLEY-HORN PROJECT NO.:	118900046

This document, together with the concepts and designs presented herein, is intended only for the specific purpose and client for which it was prepared. Reuse of and improper reliance on this document without written authorization and adaptation by Kimley-Horn and Associates, Inc. shall be without liability to Kimley-Horn and Associates, Inc.



SPEED CUSHIONS



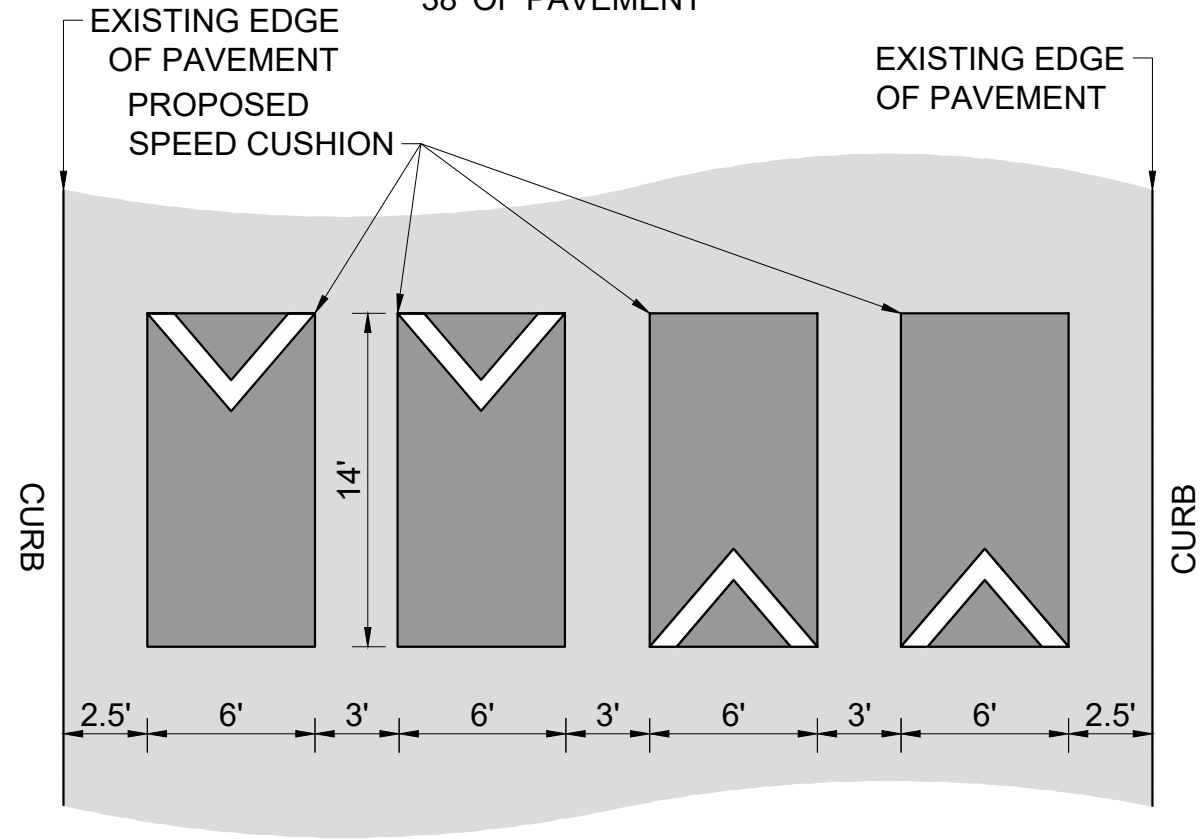
DESIGNED BY:	DHT
DRAWN BY:	DKW
CHECKED BY:	NDOT
DATE:	1/29/2024
KIMLEY-HORN PROJECT NO.:	118900046

AERIAL IMAGERY SOURCE: NEARMAP

This document, together with the concepts and designs presented herein, is intended only for the specific purpose and client for which it was prepared. Reuse of and improper reliance on this document without written authorization and adaptation by Kimley-Horn and Associates, Inc. shall be without liability to Kimley-Horn and Associates, Inc.

CONFIGURATION A

38' OF PAVEMENT



CASCADE DRIVE
TRAFFIC CALMING
NASHVILLE, TN



DESIGNED BY:	DHT
DRAWN BY:	DKW
CHECKED BY:	NDOT
DATE:	1/29/2024
KIMLEY-HORN PROJECT NO.	118900046

DETAIL

SHEET NUMBER
05