



TENNIS & PICKLEBALL PUBLIC INPUT
DATA ANALYSIS

METRO PARKS & RECREATION
November-December 2023

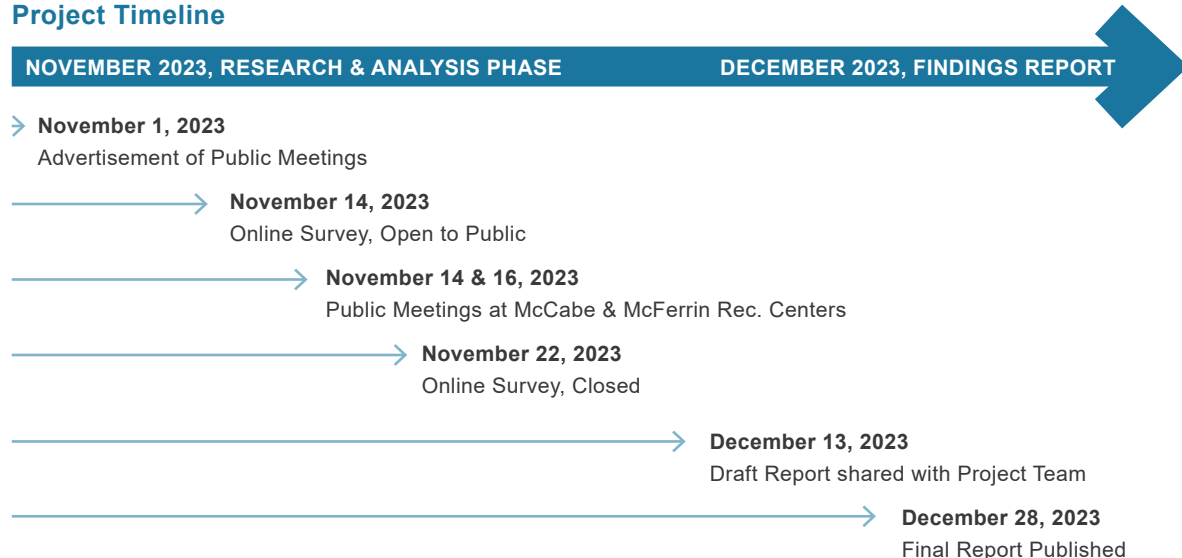
TABLE OF CONTENTS

SUMMARY OF FINDINGS	1
PUBLIC MEETING DATA	2
SURVEY DATA	7
APPENDIX	A
• Boards from Public Meetings	A1
• Comments from Meeting, Board 4	B1
• Comments from Survey, Question 4	C1
• Comments from Survey, Question 8	C15

SUMMARY OF FINDINGS

As requested by Metro Nashville Parks & Recreation, this document contains data collected from tennis and pickleball players in and around the Davidson County area. The Collier Engineering team was consulted to initiate a platform for public input that would inform future improvements to the tennis and pickleball courts at McFerrin/Cleveland Park and Richland/Charlotte Park. However, understanding the rapidly growing interest in Pickleball across the nation, as well as in Nashville, the effort grew to capture public input that could be used by Metro Parks to guide the future renovation and construction of tennis & pickleball courts throughout Davidson County. Notice for two public meetings was posted at several Metro Parks and online through Metro Parks social media platforms to make the public aware of the study underway. State representatives for USTA and USA Pickleball were also made aware of the public meetings. The result of this effort proved valuable as there were 100 in-person participants at each public meeting and nearly 700 survey responses collected.

Project Timeline



The findings concluded that the players most involved with this process were 58% tennis enthusiasts. Pickleball players represented 28% of the public engagement while 14% noted participating in both sports. Through open response questions, the study collected and documented the unfiltered thoughts of the greater Nashville community. Many of the responses submitted expressed explicit motives to separate the two sports. Various respondents also felt the blended court lines to be confusing, that the play of both sports can be distracting, and noted the tennis and pickleball play etiquettes as markedly different. A portion of the comments also acknowledged that separated courts could potentially deescalate the current conflict between the sports.

In summary, both tennis and pickleball were noted as highly valued activities in the Davidson County community. Both athletic avenues provide multi-generational opportunities for healthy and active lifestyles as well as generate community and social benefits. However, due to the differences between pickleball and tennis, the data supports that future tennis and pickleball improvement projects should focus on separating the two sports when appropriate while also emphasizing equal opportunity for play of each sport at or near public parks. To allow for the continuation of play on the public's preferred courts, emphasis was also placed on existing court improvements/upgrades; these improvements included, but were not limited to, court lights and crack repair.

Please see the following complete report to review the data and various comments collected from the general Davidson County public.

Project Team

Metro Parks & Recreation | Phil Luckett, Dillon Hoyt, John Holmes

Collier Engineering Co. Inc. | Chad Collier-P.E., Matt Campbell, Nick Tuttle-RLA, DeMera Ollinger, Max Hammer

PUBLIC MEETING DATA OVERVIEW

Participants

McFerrin Community Center:	40 sign-ins
McCabe Community Center:	68 sign-ins
*TOTAL:	108 sign-ins

Format

The public meetings each took place in a room inside of the community centers. Each meeting was held from 6:00-8:00 PM.

McFerrin Community Center - 11/14/2023
310 Grace St, Nashville, TN 37207

McCabe Community Center - 11/16/2023
101 46th Ave N, Nashville, TN 37209

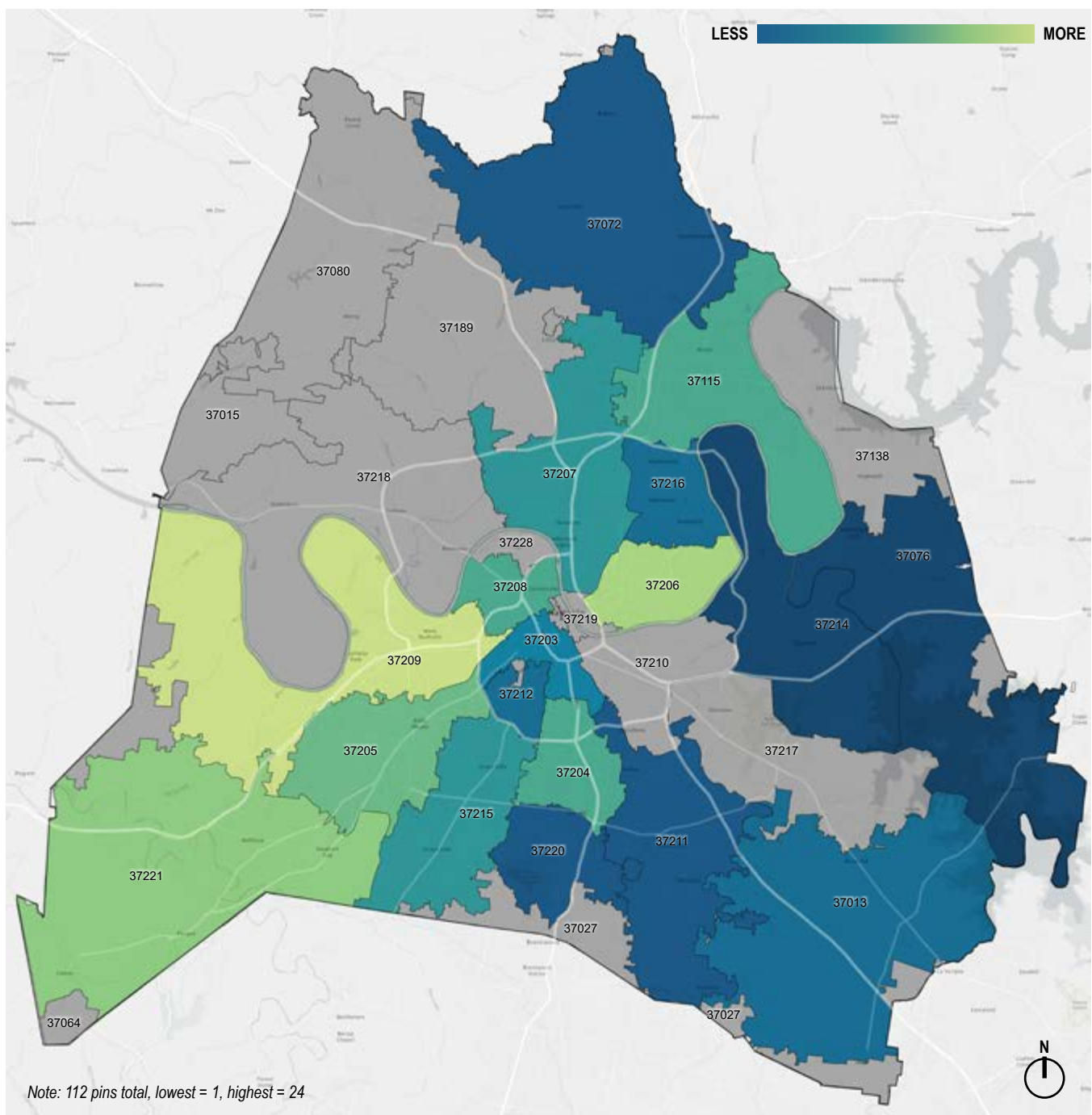
First, participants were asked to provide their name, address, zip code, and email at a sign-in table staffed by a Collier Engineering representative. At this table, they were handed a sticker and 2 pins to interact with graphic boards displayed around the room. The pins were used on Boards 1 and 2, and the sticker was used on Board 3. With assistance from Metro Parks and Collier Engineering employees, the participants identified where they live, where they play, and which court layout they preferred. Afterwards, they were invited to leave a comment on a post-it note to express opinions about the topic on Board 4. The final board presented a design for Cedar Hill Park as an example of future plans for the park's tennis and pickleball facility layout.

There was no formal presentation by Metro Parks or Collier Engineering. The participants were invited to discuss their wants and needs with the meeting staff. Many participants stayed after completing the boards to discuss athletics with other players.

To see the boards presented at the public meeting, reference Appendix A. The original presentation boards were sized at 30"x40" for legibility.

*Several attendees participated in the meeting but refused to sign in.

PUBLIC MEETING DATA - BOARD 1



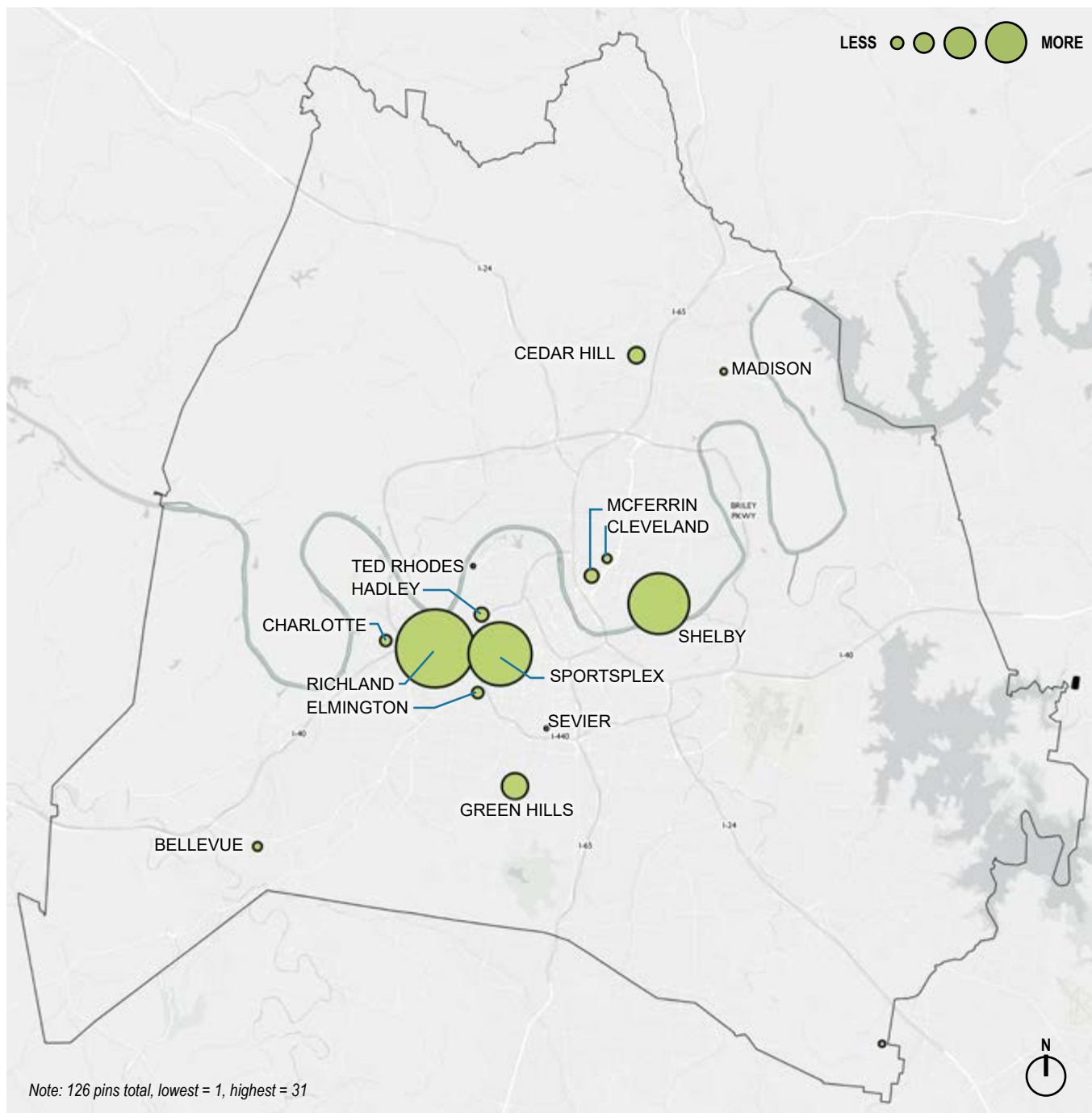
Board 1

Which area do you live in? Put a pin in it!

The first interactive board collected data about where the public meeting participants came from to attend the meeting. By collecting information about residency at the meeting, we can show where passionate racquet sport athletes are living. We can plan to better serve those communities with future designs targeted toward their wants and needs.

A meeting at McFerrin Park (37206) followed by another at McCabe Community Center (37209) is a good indicator why the two most represented zip codes are in East Nashville and West Nashville. Even though other zip codes may not have the same representation, it is important to know that their community members came to the public meeting to voice their opinions with Metro Parks, designers, and other players. Use the color key on the map to depict the concentration of people from each area that attended the public meetings.

PUBLIC MEETING DATA - BOARD 2



Board 2 Which courts do you frequent? Put a pin in it!

Pins were placed on a map which showed all Metro parks with a tennis court or dedicated pickleball courts. The pins represented the participant's most frequented park. The park map was accompanied by a numbered list of shown parks to help assist in finding the park's location on the map of Davidson County.

Parks such as Richland Park, Centennial Sportsplex, and Shelby Park were voted more frequently than others. Some parks received no pins from participants. There seems to be a correlation between the amount of courts, the condition of the courts, and the frequency of use. The map legend corresponds to the amount of pins received at each location.

PUBLIC MEETING DATA - BOARD 3

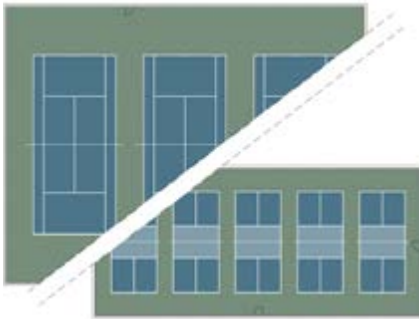


Exhibit 1: Separated

1. Park A would have 3 tennis courts, but no pickleball courts *and/or*
2. Park B would have 5 pickleball courts, but no tennis courts

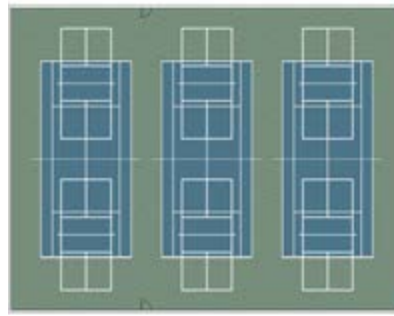


Exhibit 2: Blended

Both tennis and pickleball stripes are painted to allow court flexibility

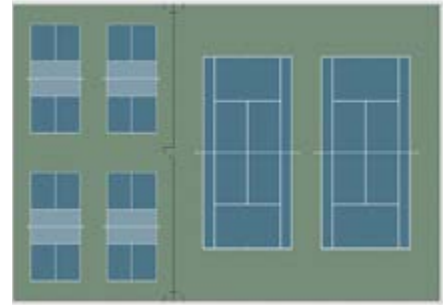
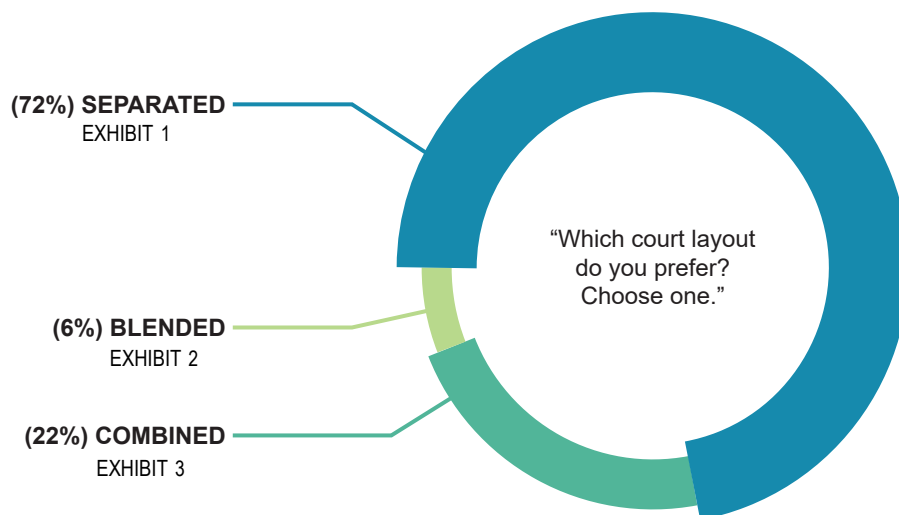


Exhibit 3: Combined

Both sports are playable at this park simultaneously. A fence separates the two sports.



Notes: 110 votes from Davidson County
5 votes from Outer Areas
115 votes Total

The results represent the collaboration of players and designers discussing the pros and cons of each layout.

Board 3 Which court layout do you prefer? Choose one.

Board 3 was a presentation of graphics for 3 types of court layouts: separated, blended, and combined. See the exhibits above. The majority of public meeting participants chose the separated court layout. This option gave an example to clarify the meaning of the graphic. Separated courts mean that a park would only have facilities for one of the two sports. Players would need to travel to another park to play the other sport. Blended courts, the least popular option, is found in several Metro Nashville parks. The lines for both sports are overlaid on the same surface.

The results of this board are telling of how tennis and pickleball players prefer to interact in an athletic context. Verbal and written comments at the meeting indicate that differences in playing style and culture make it difficult to share courts.

PUBLIC MEETING DATA - BOARD 4

Board 4

Comments

Public meeting participants were given the opportunity to leave comments on a blank board by posting a note. The comments were typed after each meeting, and they are presented in this document in full under Appendix B. The comments are sorted by the public meeting at which they were collected.

Many comments suggest the need for both sports to have dedicated courts. Some acknowledge the differences in playing style as the reason for separate courts. Other comments point to specific locations needing repairs, bathrooms, lights, or additional playing surfaces. Finally, some commenters recognize the conflict they see among the two sports. All of these themes are reflected through the rest of the responses received through the online survey.

ONLINE SURVEY DATA OVERVIEW

Participants

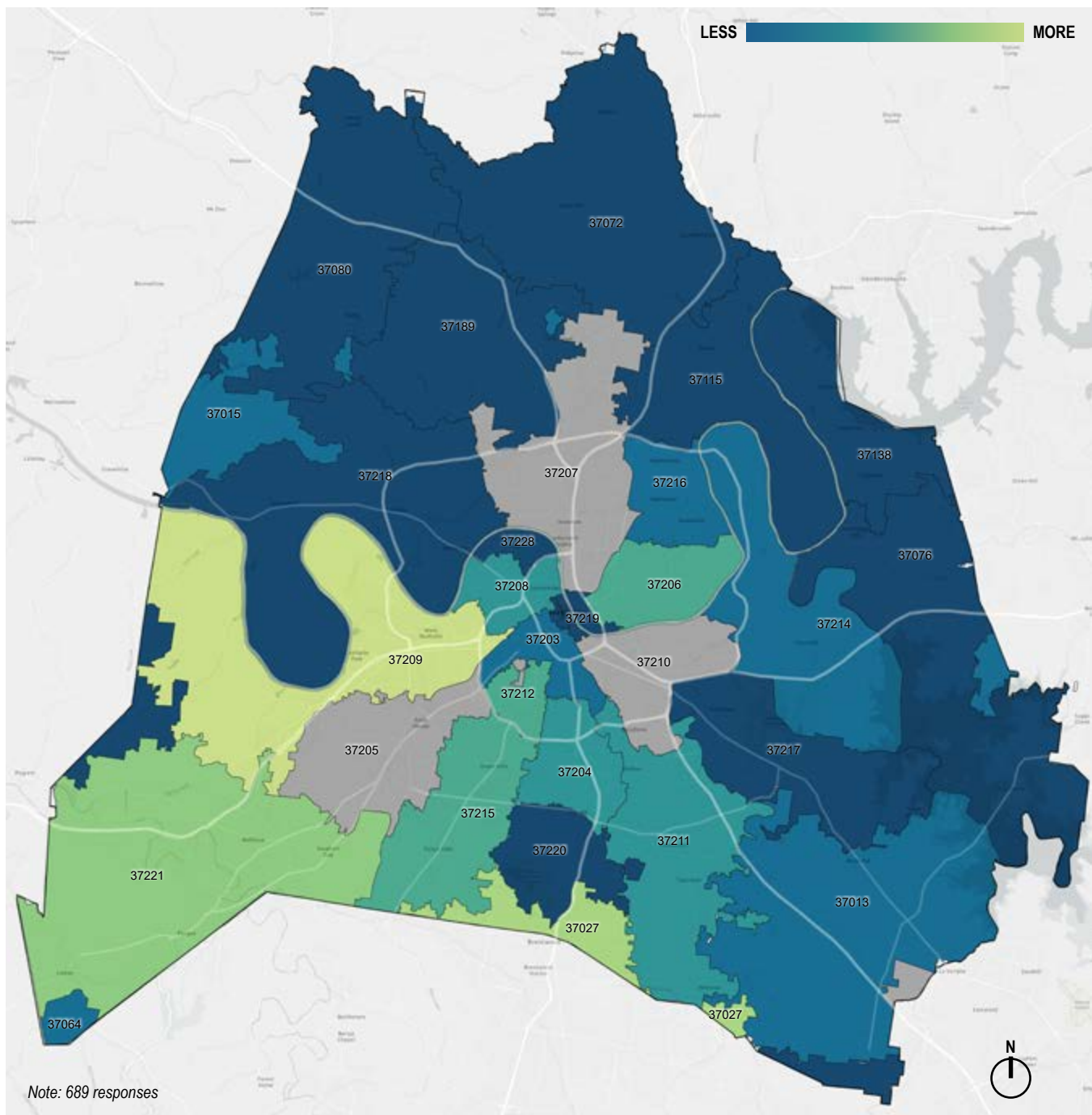
Paper Survey Response:	42
Online Survey Response:	647
Total Survey Response:	689

Format

A short survey was made available by Collier Engineering to collect data about tennis and pickleball preferences in Metro Parks. The survey was shared through multiple facets. At the public meeting, participants had the ability to take the survey on paper. These paper responses were digitized to consolidate data with online responses. Public meeting participants had the alternative option to scan a QR code to complete the survey online. Those who took the survey online may have also seen the QR code through Collier Engineering, Metro Parks, or other social media accounts. The survey was set to accept only one response per device, ideally limiting the response rate to one per person. No location data or other personal information was collected in this anonymous survey.

The following section presents the data collected per question. A summary of comments has been provided in this document. Due to extensive open response comments, the full collection is available in Appendix B.

ONLINE SURVEY DATA - QUESTION 1



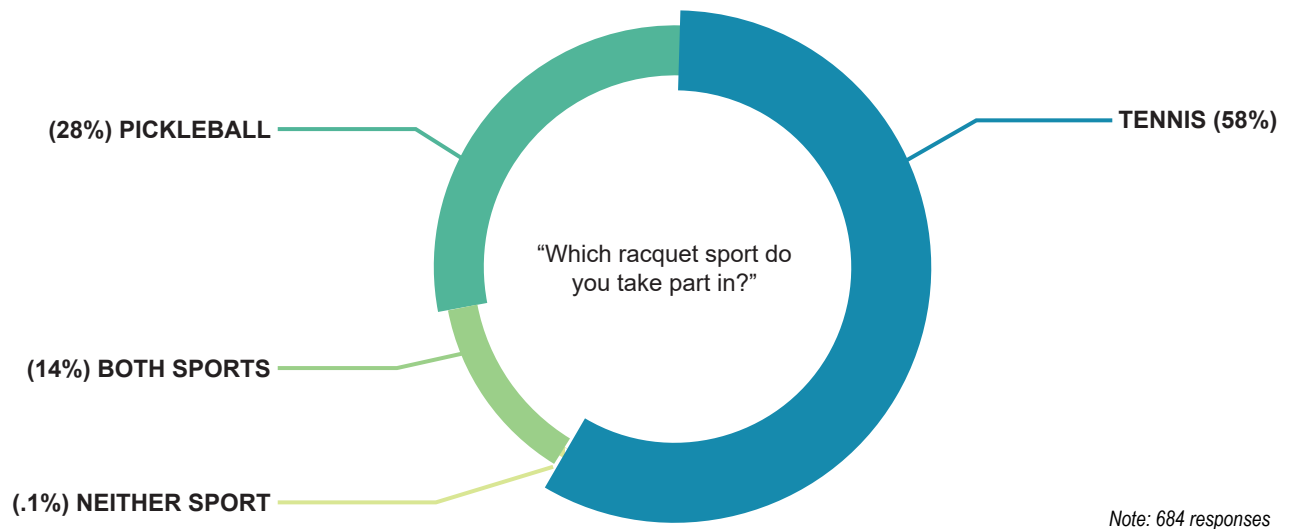
Q1 What is your home zip code in Nashville or in the greater Nashville area?

The online survey zip code assists the study by highlighting the regions of the county that racquet sport athletes are from. The online survey showed great representation of the county from end to end.

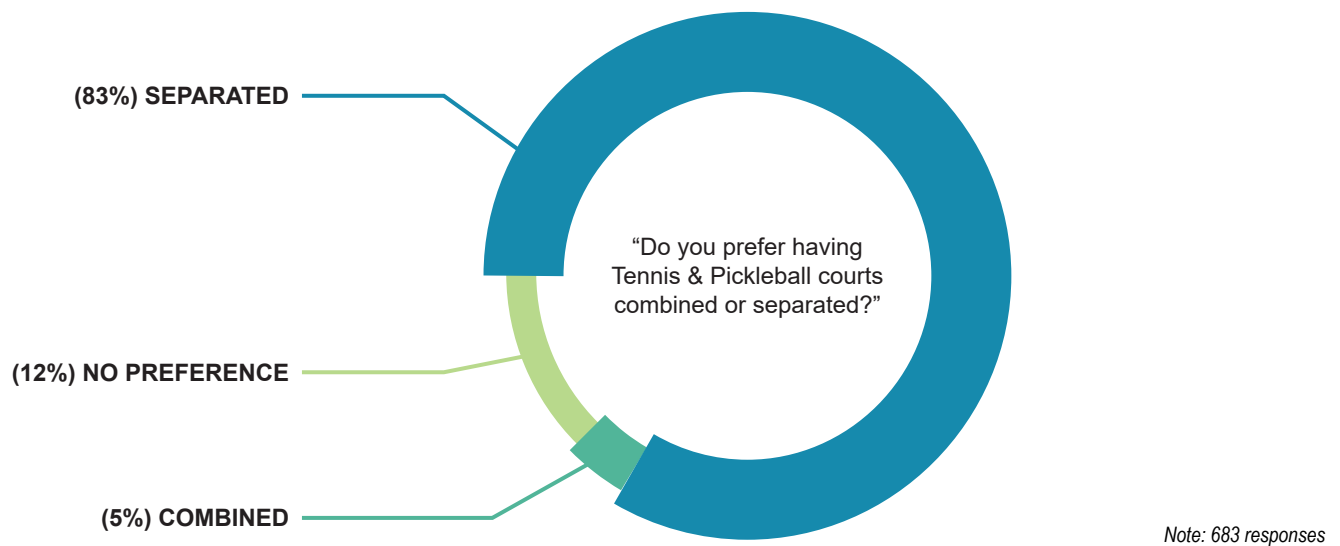
We noted that many respondents are from 37027 and 37064 which are both Davidson and Williamson County zip codes. The zip codes are a small area of Davidson, but they make up a larger portion of Williamson County. Comments received later in the survey indicate that Williamson County residents may have had significant input as well. Use the color key on the map to depict the concentration of people from each area that attended the public meetings.

ONLINE SURVEY DATA - QUESTION 2 & 3

Q2 Which racquet sport do you take part in?



Q3 Do you prefer having Tennis and Pickleball courts combined or separated?



ONLINE SURVEY DATA - QUESTION 4

Q4

Please specify reasoning for 'Separated' or 'Combined' below:

Most answers to this question provided reasoning for choosing separated courts. Q3 showed this was the preference of the majority of respondents. The open responses were sorted into categories defined by the reason/motive the response was submitted.

Many who responded from the perspective of a tennis player mentioned the effect of pickleball noise on tennis player focus. Others noted that USTA sanctioned tennis matches cannot be played on blended courts.

Comments sorted into categories based on compromise or the support of both sports often mentioned separated courts may help avoid conflict between players. Many players mentioned the confusion multiple line sets create.

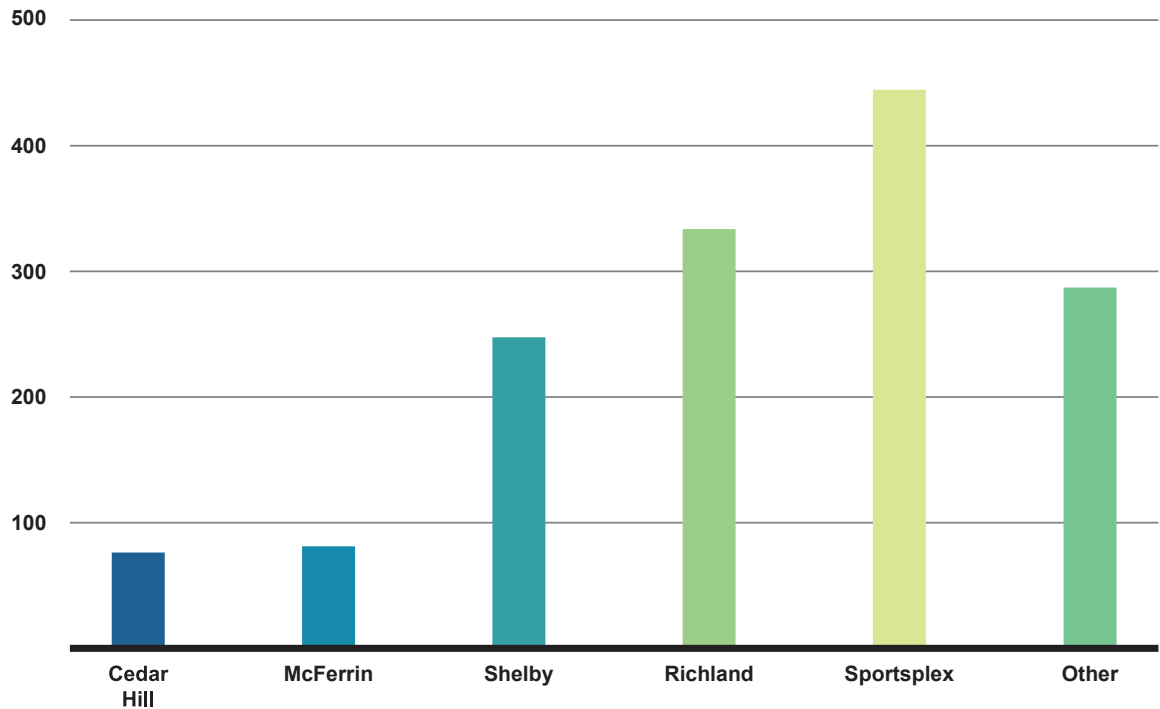
For a full list of sorted comments, please refer to the appendix of this document.

ONLINE SURVEY DATA - QUESTION 5

Q5

Which courts do you frequent?

This question listed 5 example responses: Cedar Hill, McFerrin, Richland, Shelby, and Sportsplex. Another answer was 'Other' which prompted a blank box to be filled by the survey taker. Multiple responses were allowed on this question. Some 'Other' answers collected reference courts outside of the Metro Parks inventory. See the bar chart for a breakdown of multiple choice answers, then see the word cloud for a graphic of responses collected in the 'other' response box.



Note: 680 responses total, multiple answers allowed



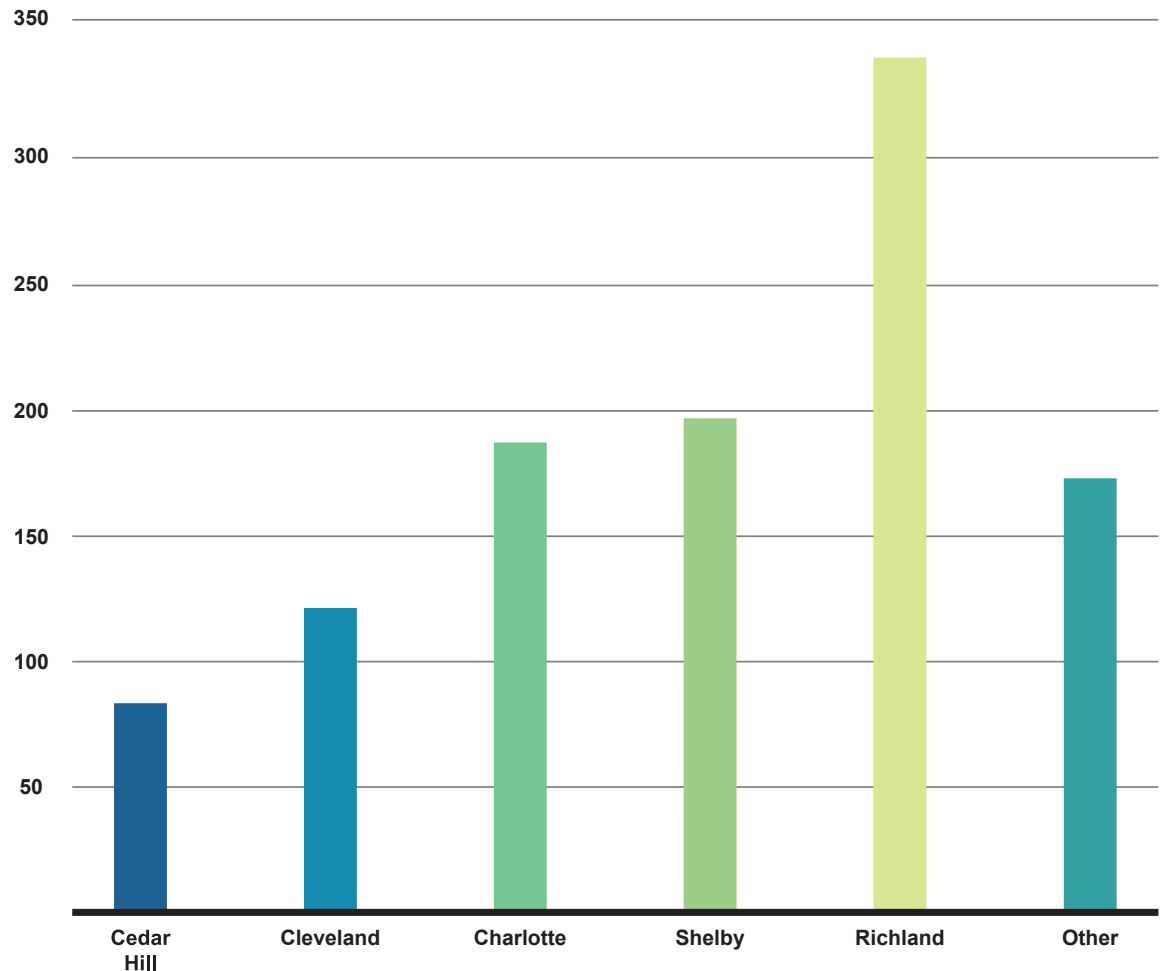
Note: 'Other' responses, some words not included for clarity. The word cloud above has scaled words to represent the number of times mentioned in responses (i.e. larger words represent a greater number of public mentions)

ONLINE SURVEY DATA - QUESTION 6

Q6

Several Metro Parks courts, including Cleveland Park & Charlotte Park, are currently in design for improvement. Which Metro Parks racquet sport courts you would like to see improved next?

This question listed 5 example responses: Cedar Hill, Charlotte, Cleveland, Shelby, and Richland. Another answer was 'Other' which prompted a blank box to be filled by the survey taker. Multiple responses were allowed on this question. Some 'Other' answers collected reference courts outside of the Metro Parks inventory. See the bar chart for a breakdown of multiple choice answers, then see the word cloud for a graphic of responses collected in the 'other' response box.



Note: 609 responses total, multiple answers allowed



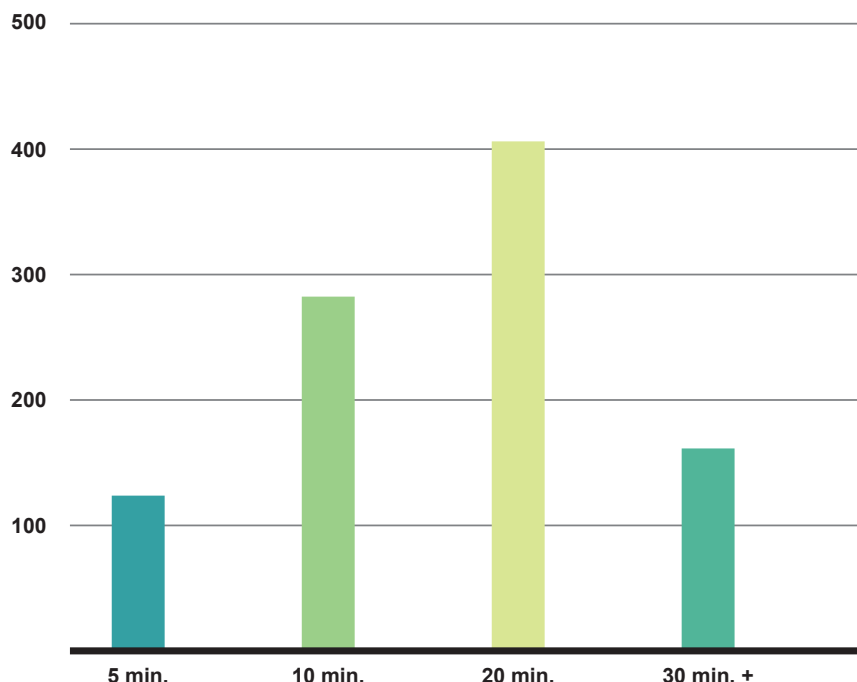
Note: 'Other' responses, some words not included for clarity. The word cloud above has scaled words to represent the number of times mentioned in responses (i.e. larger words represent a greater number of public mentions)

ONLINE SURVEY DATA - QUESTION 7 & 8

Q7

How many minutes would you travel for ideal racquet court conditions

The intent of this question was to gauge the location of future court updates in relation to regions of Davidson County. By knowing many people will travel between 10 and 20 minutes, we can start to estimate a radius of neighborhoods and parks that intertwine. There are 687 responders to this question. The median travel time is 20 minutes with an average time of 17 minutes. The distance one can drive in this time could vary greatly across Davidson County, but an estimate of 5 miles is applicable. The drive time could be used from neighborhoods, businesses, or schools to the nearest park with tennis and/or pickleball courts.



Note: 687 responses total, multiple answers allowed

Q8

Please enter any additional comments or requests regarding racquet court location or layout:

This open response comment opportunity yielded many helpful results and perspectives. The comments we received were grouped into categories: Tennis Perspective, Pickleball Perspective, Support of Both Sports, and a combination of Suggestions, Locations, and Thanks.

From a tennis perspective, it was common to read about the cultural, noise, and style differences of the two sports. In a pickleball perspective, the community feels under-served by their park system. Both tennis and pickleball feel that dedicated courts are necessary to continue the growth of their sport. Many comments highlight the sports are different, have different nets and lines, and attract a different set of people.

A significant number of comments say separate courts are needed to avoid conflict, altercations, or difficult situations. The separate courts are also believed to reduce wait times, drive times, and general frustration between players.

The suggestions category often mentions the need for lighting, restrooms, and quality surfacing. These suggestions are made as generalities as well as location-specific requests. A frequent request, for example, is Shelby Park needs lighting on the lower courts. Many other suggestions refer to court booking systems and priority rules. Please review the comments in the appendix of this report to understand the full scope of the participants' replies.

Note: 305 responses total

The background is a solid blue color. Two thick white diagonal lines intersect. One line runs from the top-left corner towards the bottom-right. The other line runs from the top-right corner towards the bottom-left. They intersect in the upper-middle portion of the page.

APPENDIX A

PUBLIC MEETING BOARDS

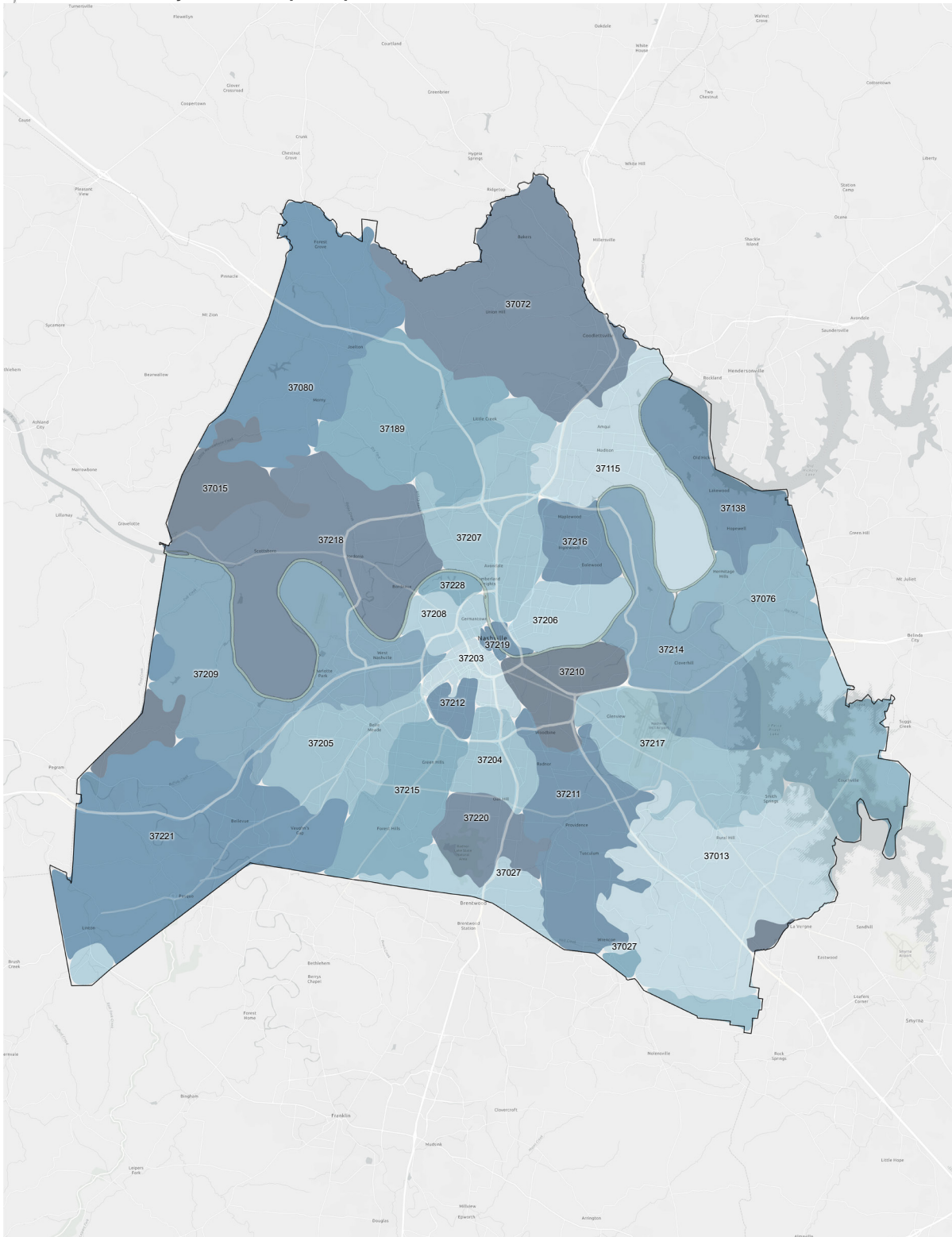
METRO PARKS & RECREATION

TENNIS & PICKLEBALL PUBLIC INPUT

BOARD 1



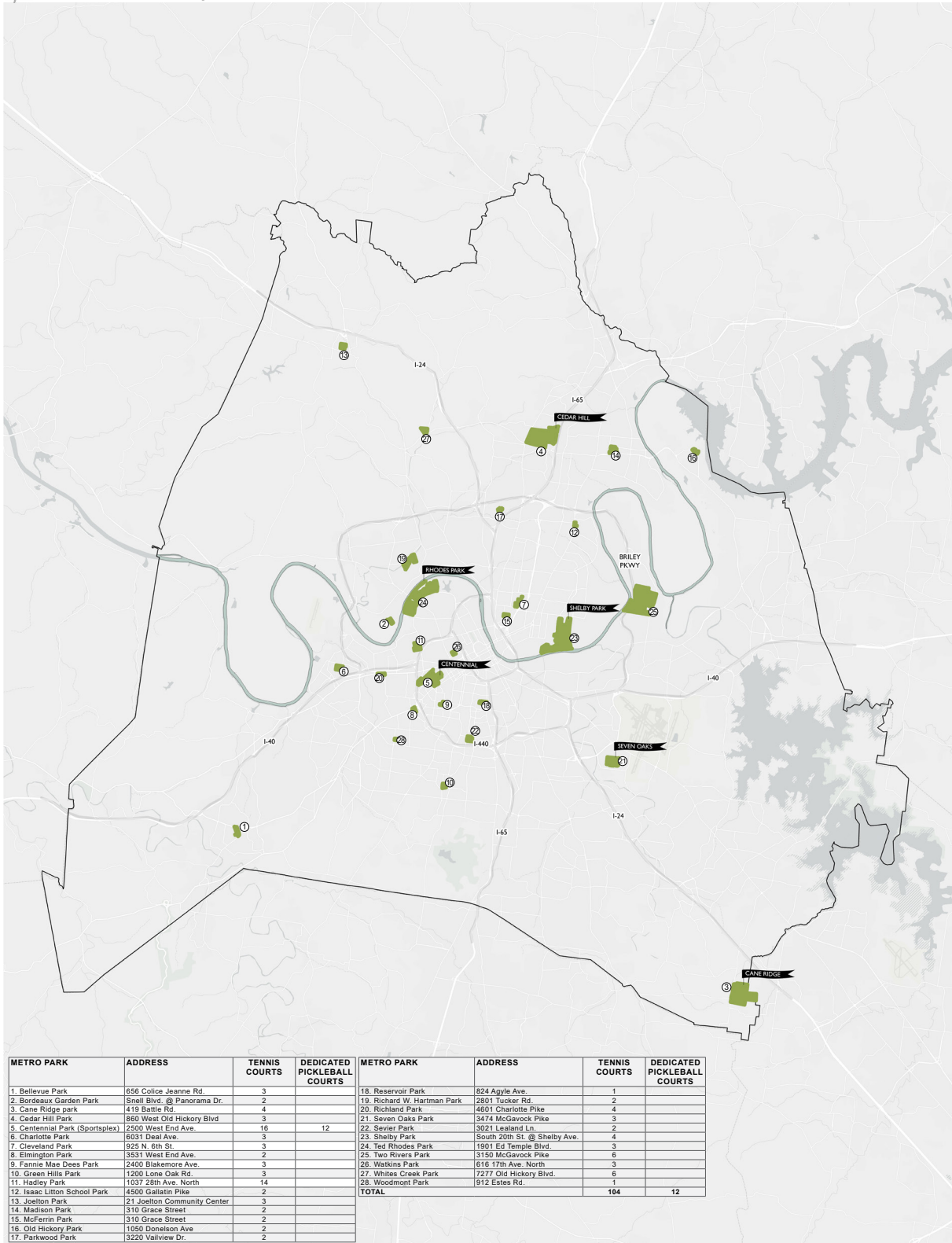
which area do you live in? put a pin in it!



BOARD 2

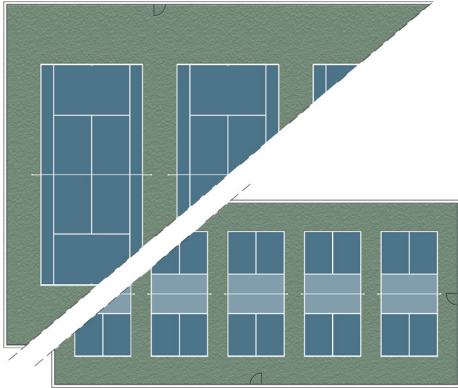


which courts do you frequent? put a pin in it!



BOARD 3

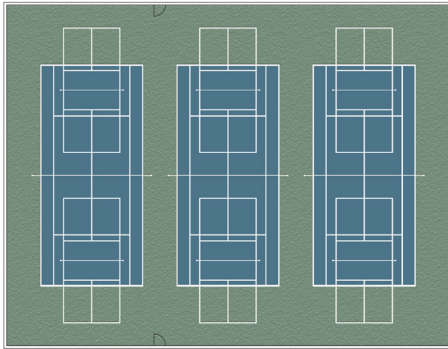
● which court layout do you prefer? choose one



SEPARATE COURTS

Park A would have 3 tennis courts, but no pickleball courts and/or
Park B would have 5 pickleball courts, but no tennis courts

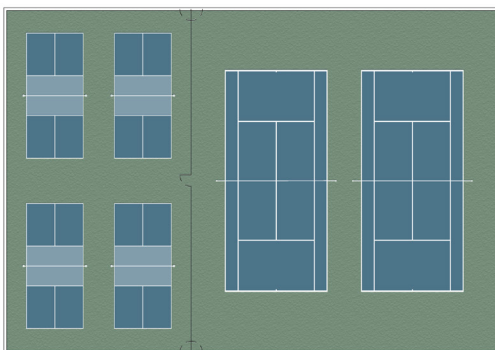
VOTE
HERE



BLENDED COURTS

Both tennis and pickleball court stripes are painted to allow court flexibility

VOTE
HERE



COMBINED COURTS

Both sports are playable at this park simultaneously. A fence separates the two sports.

VOTE
HERE

BOARD 4



additional comments, thoughts? we want your input!

don't forget to take
the survey!
see QR code below



BOARD 5



The background is a solid blue color with two thick white diagonal lines. One line runs from the top-left corner towards the bottom-right, and the other runs from the top-right corner towards the bottom-left, intersecting in the center of the page.

APPENDIX B

**COMMENTS FROM MEETING BOARD 4
METRO PARKS & RECREATION
TENNIS & PICKLEBALL PUBLIC INPUT**

MCCABE PUBLIC MEETING COMMENTS

Board 4 – Comments

1. I have played tennis for 30 years. I played at Richland Park and Centennial 2x per week for the last 15 years. I have now been playing PB for a year. It's great. Fix all tennis courts and add PB
2. It seems finally *illegible* to convert tennis to pickleball just because there is a loud group. Also pickleball players need to learn court etiquette. They walk behind my tennis game and leave the gates open
3. There are currently 28 PB courts in the works on private business establishments. Eat. Drink. PB... let that be the majority. If you turn tennis courts to PB, they only have 1 use. PB players can bring nets and play at tennis courts
4. Separate tennis and pickleball. Different parks for each sport.
5. As a pickleball instructor, I have very few courts I can teach at around town. There is a high demand for pickleball lessons but we instructors can't provide them with current court permissions
6. We need new dedicated pickleball courts and reserve the pre-existing tennis courts for tennis
7. Separate courts will ease demand, friction, etc that shared courts currently have
8. Cedar Hill Park design is great. Keep existing tennis courts
9. Dedicated courts area must for pickleball & tennis. Indoor and covered courts for pickleball are a must when factoring heat, cold, rain, and wind
10. Many pickleball players have an AARP card – bathrooms are nice. (speaking for a friend)
11. Creation of revenues: I'd organize play by levels, tournaments, local MCP events, cash 4 play
12. Please don't take away existing tennis courts in West Nashville
13. McGavock Courts need to be redone badly. A lot of room to play tennis, which I love. Terrible ground.
14. Study future possibility for outdoor courts at McCabe
15. Port-o-potties at courts would be greatly appreciated. Nature calls when she calls. Also lights at Hillsboro HS courts
16. The tennis courts at Sevier park are in rough shape. The Lights at Glenclyff tennis courts do not work. Please don't let the quality of courts be dictated by socioeconomic status of each zip code. All Nashvillians deserve quality courts
17. McGavock courts need a major overall. There are plenty of courts but the grounds are cracked.
18. Distribution of tennis courts does not match distribution of players in the city. Need more focus on Richland/Shelby. During evening hours, tennis courts see a healthy turnout
19. Bellevue needs pickleball courts
 - a. I second this
 - b. I third this, and the Bellevue CC need lines
20. Lights on unlit courts will allow their use to continue into the evening and alleviate demand across courts
21. Bathrooms. Nice and clean
22. Bellevue needs pickleball courts, we have to go 15-20 miles to play
23. Need for pickleball: lights on courts, reservation system, indoor courts
24. Excited to see Charlotte Park tennis courts get refurbished and opened soon
 - a. Agree
 - b. +1
 - c. +1
25. Separate courts for tennis and pickleball are important as long as there is equal investment in each
26. Can pickleball lines be added to the tennis courts at cane ridge park until there is funding to refurbish them
27. Combined to allow most courts, first come first serve. Dedicated pickleball courts additionally would be great for all the growth. Just as many courts as possible, less interested in aesthetics, thanks
28. Reservation system to make it easy to reserve online without calling a metro center
29. Bathrooms are needed for pickleball and tennis courts. Lights are important to play in evenings after work
30. Re: Cedar Hill. Great but nobody plays there per your survey
31. Indoor courts are a nice addition to the pickleball plan for expansion
32. Please add pb courts around Bellevue area. We are currently driving to Maryland Farms to play open play (30+ min)
33. Re: Green Hills Park (#10). 6 tennis courts that are unplayable. 5 unofficial PB courts that used all the time. Redo as PB courts. Tennis players are going to Hillsboro HS new courts
34. As a tennis player I believe active tennis courts should not be given over to PB (as in Richland Park). The two sports are not compatible. As for old tennis courts not used, I would be ok with repurposing

MCCABE PUBLIC MEETING COMMENTS

35. Please take into consideration the large number of pickleball players vs number wanting to play tennis
36. Bathroom, proximity to green hills
37. The current court priority system (e.g. at Richland) is working well
38. Please do the eye test... visit courts, see how many pickleball player vs tennis around the city. You would make a lot of players happy
39. The eye test is a poor way to judge interest. Plenty of tennis players want to play but fell discouraged by long waits/full courts (mostly pickleballer groups)
40. Online reservation system that's easy to use and easy to find & bathrooms
41. PB is easy to pick up. Therefore more people are able to show up and play. Good. But this should not come at the expense of another sport which has a steeper learning curve. It needs facilities to cultivate players at its own pace
42. It appears PBallers are more likely than tennis players to camp out on courts for longer periods of time
43. Tennis: 28 facilities. Pickleball: 1 locations. I'm not feeling sorry if they lose 2 or 3 locations. They still have 25 to 3 locations. For the number of active players, pickleball is still grossly under represented
44. Will the demand for pickleball be the same five years from now, ten years from now? Find out on the next episode of...
 - a. Also same for tennis technically
45. Please don't take away tennis courts
46. Pickleball players should not come at the expense of tennis. Tennis players lost 50% of our courts with the new regulations
47. This early antagonism will eventually mature into a strong synergy between the two communities

MCFERRIN PUBLIC MEETING COMMENTS

Board 4

1. Tennis & pickleball have different court etiquette. Some pickleball groups plan 5 hours plus sessions (e.g. Richland Park) where the court rules state 90 min limits, when others wait. Proper etiquette needs to be agreed upon/communicated to everyone
2. Interim solution is to try to make sure lighted courts are available for pickleball e.g. Ted Rhodes Park
3. While the sports might seem compatible for the same space, they're culturally so different. Please provide separate facilities. Both sports have high demand. But right now, tennis is being wiped out because there are no pickle courts. So of course pickle will swarm them
4. It's already hard enough to access free tennis courts. It'd be great to find a way for pickleball to find its own space
5. Thank you for listening to the community. We love you – tennis peeps (pickle is fine too)
6. Cleveland Park would be an awesome pickleball dedicated facility for Nashville with dedicated tennis at McFerrin just down the street
7. Don't forget the kids, Craig
8. Both are growing sports. We should add/fix tennis courts & also add pickle ball courts
9. Thank you, we need more pickleball courts. At a minimum, put pball lines down on all metro school tennis courts
10. Thank you for asking, other counties nearby (Rutherford) are not asking
11. Pickleball is loud, disruptive and doesn't respect other courts – not always because of the players. They inherently need to be separated
12. I have seen pickleball players take rocks to the court to create lines, I have also tripped over the tape. It is dangerous and destructive
13. This is great. Thanks for investigating solutions. Remember: pickleball requires 6-8 parking spaces per court; tennis 4 per court
14. If you build 2 pickleball facilities with 8-12 courts per, we would flock to those courts
15. Never in history has one sport actively looked to steal another's space & act entitled to it. That said I still support providing pickle with separate facilities. Just don't eliminate tennis courts
16. Thank you for finally hearing the pickleball community in Davidson County. We sincerely appreciate your efforts to meet the growing demand for courts
17. Thanks for what you guys are doing

Board 5 (Cedar Hill Park Exhibit)

1. We need this in West Nashville
2. Separated courts at same park where possible. Never on same court. PB is social, needs +5 courts, picnic tables & pavilions. City needs to plan for growth of both activities
3. I like this
4. Biggest win here is 8+ pickleball courts together. PB is social so better to have more courts together than same number scattered

The background is a solid blue color with two thick white diagonal lines. One line runs from the top-left corner towards the bottom-right, and the other runs from the top-right corner towards the bottom-left, intersecting in the center of the page.

APPENDIX C

COMMENTS FROM SURVEY

METRO PARKS & RECREATION

TENNIS & PICKLEBALL PUBLIC INPUT

QUESTION 4 RESPONSES – SEPARATED COURTS

Comments Based on Compromise

1. So everyone can play their sport simultaneously, creating bigger and better community!
2. Easier to see lines. Permanent nets for PB are nicer. No fighting over courts.
3. So there is no conflict between players
4. To remove the in fighting between tennis players and pickleball play, to remove competition for court space, not fair pickleball has to produce their own portable nets when playing on tennis court
5. Excess lines, but i am happy to play on either(you said prefer)
6. Each sport has a great following. Don't want either sport to take away from the other.
7. Two different sports deserve two different dedicated options
8. If combined allows for more courts to be built I'm in favor of that. If not, then I'd want them separate.
9. There are many more options for pickleball court locations, these are not being utilized. Indoor facilities such as old retail storefronts would be the great locations for tons of pickleball courts. Look at the facility coming to Brentwood.
10. Preference is due to noise but not necessary to be separated.
11. I wouldn't mind a park having tennis and pickleball courts, just not pickleball on top of tennis courts. Would be less tension to have dedicated courts.

Comments to Support Both Sports

1. Lines are easier to see.
2. pickleball has a different physical structure for play. courts cannot be used interchangeably. tennis players cannot play on pickleball courts.
3. Different games/environment
4. Because the lines are totally different
5. So people that play tennis can have their own courts. Just like Mundy Park in MJ
6. It cleaner and it will reduce wait time and frustration
7. Easier to play
8. Confusion with lines, court availability
9. I do not like a confusing number of lines on a court.
10. Lines can be confusing if a quart has both tennis and pickle ball lines.
11. Lines are crossed and super distracting
12. Noise and nuisance and competition for court time
13. Lines for both on same court are distracting
14. The crowds and noise level is very distracting when both tennis and Pickleball are being played in the same location.
15. Noise
16. The lines are confusing
17. Lines are confusing otherwise and ease of booking
18. More lines on the court is confusing. The ball slides on lines. The net dimensions are different.
19. Hard to read lines
20. Better spacing
21. Court time
22. Noise & lines
23. Clear distinction between of the courts purpose
24. Easier play / dedicated lines
25. So both sports can play without being halted by the other
26. Less line confusion and fighting over court usage.
27. Too distracting to have that many people playing 2 different games in close proximity.
28. So people that want to participate either sport have a place to play.
29. Reduces confusion with lines
30. To allow for more players to access the courts at once.
31. The nets are lower for pickleball than for tennis+
32. Avoid conflicts
33. Nicer for any sport to have dedicated courts. Would love to have PB courts at Ravenwood!

QUESTION 4 RESPONSES – SEPARATED COURTS

34. So we can all play at the same time
35. It's just better that way...
36. Different lines
37. permanent nets
38. Having them separate reduces the conflicts between the two sports. The tennis players think they have the priority because they courts were originally for tennis, but there are far more pickleball players now than tennis players. courts
39. Less hassle in dealing with who gets the court
40. Designated place to play
41. No fighting over court space
42. Both sports can be enjoyed
43. Makes the lines cleaner and less confusing
44. Courts are already packed as is, taking over another sport just makes the courts too busy
45. Easier for multiple parties to play at once
46. Keeps courts in condition and right now I think things are skewing toward more PB so would be nice to allow for separation
47. The lines
48. Pickleball courts are different than a regular full size tennis court!
49. Clear boundary lines, stationary nets of appropriate height
50. Lines can be confusing
51. Less conflict between tennis and pickleball players positioning for playing time
52. Because we have to share if the courts are combined
53. Allows for dedicated play and less overlap conflict which has happened many times
54. More availability
55. Would be nice to have dedicated lines and nets
56. Consistency and clear expectations
57. Noise, line clarity
58. two set of lines make it really hard to call lines
59. Less fighting over courts
60. Each sport needs dedicated lines and nets. It's too confusing playing on courts that have both lines and creates resentment between tennis and pickleball players.
61. Less risk of conflict.
62. Sport appropriate nets and lines are a big part of what differentiate the sports
63. To allow equal access to the courts and provide a suitable playing environment for both sports. The differences in the way the sports are played and the culture around them prevent them from being combined in a way that serves both communities.
64. Allows for more courts of each at one spot. Increasing likelihood a court will be available if I go there. Versus if you have some tennis and some pickleball at the same spot, there's a higher chance all of them will be taken.
65. Less confusion due to multiple Court configurations and less conflicts due to court usage.
66. So we don't have to argue over courts
67. Gets too crowded
68. Line distractio, too many people on the court
69. Courts are often unavailable
70. This assures that if you are intending to play one sport or the other there is an equal opportunity to do so. At this point our location tennis time is rarely available due to pickel ball being on all courts.
71. easier for scheduling of each
72. Less confusion with the lines and more courts for each sport
73. Difficult time sharing courts
74. More availability.
75. Less confusing
76. So there is no fighting between pickleball and tennis players on who should play.
77. Clear lines and permanent nets
78. It ensures there are dedicated spaces for both sports
79. Eliminate extraneous lines that affect play. Eliminate use/right to use conflicts

QUESTION 4 RESPONSES – SEPARATED COURTS

80. Dedicated separate courts helps alleviate sharing issues.
81. Not enough courts for both pickleball and tennis to play especially on weekends.
82. Both games are great. More and more private companies are building indoor courts for pickle ball because it's a good fit for indoor spaces.
83. Too much interest in both, noise differences, line differences
84. Should make more courts for both so there is room for everyone
85. No conflicts
86. Ball rolling on courts
87. Too many lines on one court makes it hard to make clear line calls
88. Easier to get a court
89. Combined court sharing makes for adversarial situations, causes tension and conflict
90. Correct nets used
91. Other sports don't share why should tennis and PB? Besides they both need less room than other sports.
92. Extra lines can be distracting and the I believe Pickleball courts need to have closer boundaries(fencing or netting)
93. Two totally different games. Tennis takes longer than pickleball and requires more space/running.
94. Different vibe. Dinks are distracting.
95. Too much conflict between players
96. Destination for the individual sport
97. If space allows, it is ideal. They are different sports that can interfere with each other due to natural positioning of players
98. lines are confusing
99. Then there is no question who can use the courts
100. Less debate over which sport gets priority, lines can be specific to tennis or pickleball, same with nets
101. less friction between sports, don't have to bring nets for pickleball, having both lines on courts can be confusing
102. No altercation between players
103. All the lines are confusing
104. Giving all players opportunity to play
105. Less conflicts
106. The lines are confusing
107. Fewer court conflicts and confusion.
108. No confusion on who gets the courts. Pickleball lines are out already
109. Too many lines on the court can be confusing
110. Less wear and tear, easier to see the lines
111. Lines get confusing
112. It's easier to play when there are only one set of lines
113. Allows more people to play, and lines are easier to distinguish.
114. It reduces conflict that arises from the nature of the sports.
115. Pickleball and tennis court lines are different. Separate courts are needed to avoid confusion.
116. We just need more courts in general versus sharing.
117. Combined courts have too many lines, which make it harder to play either sport.
118. Minimize line confusion and/or competition for court usage
119. Cleaner / simpler look to the courts. Less competition to reserve the courts
120. The lines are confusing.
121. Line markings differ.
122. To offer a greater sense of community within the given sport
123. net issues
124. Less chaotic when separated
125. Harmonious relationships between tennis and pickleball players.
126. Less confusion on lines and creates a better atmosphere with all the same sport
127. Geometrically it isn't as efficient to have taped off tennis courts as pickleball courts.
128. Net size
129. Easier to notice lines and to organize groups
130. No line confusion

QUESTION 4 RESPONSES – SEPARATED COURTS

131. Different sports different needs
132. Pickleball balls easily can end up and interfere with tennis match and distracting...Unless like mcgavock that has 6 courts possibly 3 for tennis and 3 for Pickleball since those courts are separated by a fences
133. Too territorial and no one follows the 90 min rule.
134. More demand for one sport at a time
135. Too hard with multiple lines and sitting out players
136. Easier to see the lines without having so many sets on the same court.
137. Access and playability
138. Sometimes, the lines can be confusing.
139. The lines are confusing whether you are playing Pickleball or tennis if the courts are combined.
140. easier to play and less distractions and game interference
141. Availability
142. Less confusing lines
143. Use less real estate for PB. PB move court to court during open play. Less distractions for both dports
144. Better for both sports
145. Because the official net height is different.
146. Better nets, Easier to see the lines, no conflict with tennis vs pickleball
147. Just easier with few lines. Not a deal breaker though
148. The overlapping lines impact the play
149. The tennis players complain about the noise. Unless there are curtains between the two, which is impossible if lined for both sports, players will spend much time chasing balls. 1 tennis game takes up 2-3 pb courts. Need to be separated to do it well!
150. Lines
151. Lines can be confusing
152. Easier to see lines
153. creates designated area for each, and allows more flexibility for how the courts are used, ie you don't have to wait for someone to break down their court in order to play your sport
154. Easier to play when there is a single set of lines.
155. There wouldn't be any conflict of who gets to play, pickleball or tennis.
156. Net height
157. So that tennis and pickleball can happen simultaneously
158. The overlay is a temporary solution that causes conflict.
159. Avoids conflict
160. Confusing lines
161. Safety
162. Less conflict.
163. So there wont be any conflict of playing time with tennis.
164. Combined creates friction between the sports/players
165. Different crowd that generally want to play at the same time
166. No questions asked and nets ready to go.
167. Just seems to work better.
168. Size of courts and height of nets
169. Markings
170. So there's no conflict. Leave the tennis courts for tennis players, and build new dedicated courts (lots of them) for pickleball
171. Keep like minded people together to avoid conflict
172. Less tension between sports.
173. Separate courts reduce conflict between parties
174. Extra lines are confusing, net height is different
175. eyesite line calls
176. Court maintenance, crowds, noise
177. Like minded people together
178. Prevents arguments between tennis and pickleball players. Pickleball players rotate and play with others. 10 court facilities are ideal. I live in east so I will go to Cleveland for pickleball and mcferrin for tennis
179. Not compatible

QUESTION 4 RESPONSES – SEPARATED COURTS

180. Pickleball noise, easy to see lines, avoid conflict
181. Increase of harmony among the players
182. The sports have different play styles. Pickleball rotates faster through games. Both sports arguing for full or half courts has caused conflicts
183. avoids conflicts, more enjoyable play without lines for other uses.
184. Less issues moving forward and best at achieving harmony within both communities
185. Keeps it simple
186. The nets are different, so one does not work for both sports. Also, so there isn't competition for the courts between the sports.
187. It is easier to play on separated courts. There is no confusion of the lines
188. Permanent nets, no conflict for play between sports
189. Keeps things simple and non argumentative
190. Lines get confusing when combined
191. Avoid any tension
192. Competing noise big factor, parking competition
193. Tennis players get mad at pickleball noise
194. No arguments, but there should be more pball
195. More people can play if courts aren't separated, and no arguments between tennis and pickleball players
196. Combined PB lines on tennis courts will only cause competition of scarce resources and antagonism between communities. Have them close but separate
197. Better net heights

Comments from Tennis Perspective

1. Pickleball is loud and disruptive. Blended lines confuse tennis players. Some USTA regulations prevent matches from being played on courts with blended lines.
2. type of sport atmosphere; noise from equipment and non-participants
3. PB is too loud
4. Pickleball is too loud.
5. It's been my experience that if there are separate courts for pickleball then the pickleballers will leave the tennis courts alone even when the pickleball courts are full.
6. We need time for tennis.
7. Noise distraction & movement distraction from pickleball when playing tennis.
8. We need more tennis courts, pickleball people are mean and combative
9. So they are not blocked by Pickleball but available for tennis
10. More availability, dedicated courts means less lines, permanent nets, no bickering about court time with tennis.
11. Pickleball is offensively loud
12. So there can be designated spots for each sport. It can be distracting to play tennis next to a court of pickleball matches.
13. Availability of tennis courts is already limited in the area
14. There are different lines, and the sound of pickleball is annoying while playing tennis.
15. All the lines are confusing for tennis players
16. The noise pickle ball makes.
17. Pickball can be noisier. The multiple lines on a tennis court makes it confusing. Some Tennis leagues (USTA) have rules against playing on a court with non-tennis lines on it.
18. Pickleball takes away from an already overpopulated tennis court issue
19. The pickleball lines confuse me when I'm playing tennis. They are a distraction!
20. Noise and USTA southern does not allow sanctioned events to play on combined courts
21. The noise
22. Multiple lines and noise
23. USTA tennis policy. Too many lines are confusing.
24. In my experience pickle ballers tend to congregate in larger groups on the side of the court and are a distraction. The noise of the pickle ball paddles is also a distraction. The extra lines are also a distraction.
25. Noise

QUESTION 4 RESPONSES – SEPARATED COURTS

26. Pickleball lines are confusing, they take valuable court time away from tennis, they need their own courts
27. Different courts should be specific to their respective sport...tennis courts need to be used exclusively for tennis particularly since there seems to be a shortage of tennis courts in Nashville
28. Playing USTA matches on a tennis court marked for pickleball makes the match illegal. USTA leagues and tournaments would not be able to play on the combination courts.
29. Dual lines on the tennis court are confusing, and quite irritating when playing "real" (league) tennis matches.
30. The noise
31. Combined lines are difficult to manage. Tennis availability is already tight. Letting the Pickleball explosion remove tennis courts avail is not fair to the tennis players. Support the pickleball on its own demand.
32. Noise and etiquette
33. The Pickleball lines are very distracting when you are playing tennis.
34. Pickleball is loud and distracting
35. Takes away from tennis community waiting for pickleball to finish
36. The additional lines are intrusive when playing tennis. I don't like having to leave my tennis court to accommodate pickleball.
37. The pickle ball game is loud and there are usually more than 4 players on the court. The loudness makes it difficult to focus on the tennis game and the hear calls. Also, the pickle ball lines on the tennis courts can be somewhat confusing.
38. Pickleball is too loud for tennis players
39. Pickleball is loud. Pickle all players are loud. Pickle ball games sound like a frat party, and when I am playing tennis, which is an incredibly strenuous and athletic endeavor, it is impossible to focus when pickleball is being played nearby.
40. Lines can be confusing and the pickle ball sound is loud
41. Lack of tennis courts
42. More options to play tennis
43. if pickleball players are able to use the tennis courts to play, then it greatly reduces the amount of courts we have available. Pickleball players can play anywhere really but tennis players cannot
44. Pickleball is a much louder game and is distracting for tennis which is much quieter and involves focus.
45. Don't like additional lines on the tennis courts. Also don't like hearing the "clack" of pickleballs.
46. Pickleball is loud. Pickleball messes up the tennis lines. Pickleball people do not know court etiquette. Tennis people spent years of fundraising and grants getting those courts built!
47. Noise / distraction control and less arguing over who gets use of the court. It's not ideal when a group of pickleball players are taking half of a tennis court and the other half is empty.
48. Pickleball is a social sport, it is enjoyed better in facilities with 8-12 courts. We are a distraction to the flow of tennis pairings
49. Pickleballs are loud and distracting.
50. We are losing courts right and left to pickleball and the likes become disorienting when playing tennis.
51. We do not have enough tennis courts in the city!
52. Pickleball lines & tennis court lines do not overlap well, and it becomes very confusing. Also, pickleball courts have started to overtake tennis courts. It is becoming harder and harder to find tennis courts that aren't being used by pickleball players
53. Pickleball is more noisy.
54. Pickleballers are loud and aggressive
55. Because it's already hard enough to get a tennis court without layering another sport on top of TENNIS court
56. 1. Pickle ball is extremely noisy! It makes playing tennis an unpleasant experience to be next to pickle ball.
2. Pickle ball players take over tennis courts and prevent tennis players from playing tennis on tennis courts!
57. Noise from pickleball and players can be disruptive.
58. When playing tennis, the lines are confusing, which also makes less pleasant to play.
59. USTA rules do not allow matches to count if they are played on courts that have both tennis and pickle ball lines.
60. Difficult to play tennis when PB lines interfere!
61. Pickleball players are generally not respectful of wait times. I am often unable to play tennis despite waiting an hour for courts to clear because new people arrive and swap out with other pickleball players.
62. the pickleball noise is enormously distracting & players do not follow same etiquette as tennis players

QUESTION 4 RESPONSES – SEPARATED COURTS

63. Crowd
64. It feels like pickleballers are taking over and I worry if there aren't dedicated tennis courts, I'll never be able to find a court.
65. The sound of pickleball is annoying
66. Noise
67. Pickle ball lines are distracting. A lot of the time, people who play Pickleball will take up two tennis courts vs one
68. 1) The pickleball lines are distracting on our tennis courts. 2) The pickleball sounds and # of people on a court do not match the energy of a tennis match.
69. I find that pickle all players do a poor job of occupying space in an efficient manner. Instead on occupying one court with two games, they spread out and take over two tennis courts. And they tend to huff and puff if you suggest they may move over.
70. There is almost never tennis courts available because of how many pickleball people take
71. The lines are confusing on the court. Tennis courts were already hard to come by even before picke ball took off. Build more courts and keep them separate.
72. Pickle ball players are taking over all the tennis courts so it feels like there is barely any room for tennis players anymore. It's really frustrating.
73. Priority courts work great as long as rules are followed. No dedicated or priority leads to pickleball taking all courts (1 game each court)
74. Pickleball is quite loud
75. No other sports are allowed to infringe on tennis courts (soccer, basketball, ping pong). I've also witnessed pickle ball players sit on and damage tennis nets, using them as a seat.
76. There is a mentality that pickle ball takes precedence since more people can use the court at once but I've been to Shelby when only half of one or several courts is being used and people are upset when you ask them to consolidate.
77. as a tennis player its now impossible to snag a court due to pickleball matches
78. Harder to play tennis w/extra lines painted. New, darker lines at Shelby are better. For courts you can reserve, prefer separate b/c it is already hard to schedule courts for league play. It would be more challenging if have to compete w/pickleball.
79. More opportunity for tennis players to actually get access to a court
80. There's a shortage of tennis courts in Davidson and Williamson county and taking up some of that supply with pickleball is making it harder to play
81. So tennis players won't feel intruded upon by pickleball players.
82. Noise of pickleball plastic balls is too noisy to focus on tennis play.
83. Honestly, it seems like the space can not be shared. Pickle Ball having six courts at Shelby makes it impossible for you to play, they refuse to share court space. Setting up side-by-side games is not efficient, which is the norm it seems.
84. No tennis courts are available because they are always taken up by pickleball players
85. The sound, respect for space on the court, sometimes they cut the middle straps on the net, the pickle ball lines on tennis courts are distracting,
86. So there are enough available courts for tennis players. Pickle ball can be played anywhere. They have there own portable nets where tennis players don't have that option.
87. Pickle ball players try to take all tennis courts
88. When I want to play tennis it is at the same time as when people want to play PB. Nashville doesn't have enough courts for me to play.
89. Tennis needs its own place. There are not enough tennis courts, and tennis feels like it is growing. When has the city added tennis courts?
90. So that tennis courts aren't blocked by the smaller pickleball courts.
91. The pickleball lines on a tennis court make the court messy and confusing during a tennis match
92. Pickle ball players take over tennis courts
93. I would like to have more tennis courts to play on. The tennis courts in Nashville are always full when I try to play.
94. damage to the tennis nets and availability of courts when wanting to play
95. Not enough tennis courts!

QUESTION 4 RESPONSES – SEPARATED COURTS

96. It's very difficult to get a tennis court when pickleball is being played on it. When one half opens up, another group comes, so the court is never free. I also don't like having a ton of pickleball players having to walk across the court to access theirs
97. Because they're tennis courts
98. The pickleballers do not adhere to the 90-minute court rule and okay organized pickleball for 3-4 hours on public courts. They monopolize the courts and it is very loud.
99. Maintain space for tennis players
100. Maintain availability for tennis players
101. It's very difficult to concentrate while playing tennis when pickle ball is being played on a court over.
102. You know which courts can be used for tennis and you don't have the distraction of 8 people playing pickleball next to you
103. Tennis courts get destroyed by pickle ball players.
104. Because pickleballers tend to hog the courts for too long.
105. Please keep Tennis courts separate from Pickleball and most importantly, please enforce the rule that Pickleball players CANNOT use the Tennis courts. It is very hard for Tennis players like me to ask a group of 8 people to not to use the Tennis courts.
106. Tennis and pickle ballers prefer different atmospheres. Pickleball is extremely distracting to tennis players.
107. Pickle ball is loud and requires smaller courts
108. Pickleball too distracting and loud
109. It's almost impossible to get a tennis court after 5pm now
110. Tennis players are already outnumbered. Keeping the courts separate would allow us to have a place to play without dealing with the impact from pickleball.
111. Pickleball players take up all the tennis courts
112. Because USTA tennis rules designate that we can't play organized matches with courts that are painted with pickleball lines.
113. I play both (tennis at a high level) but regardless, it's frustrating to not find courts. It's much more of a problem to find tennis courts and many people have voiced this.
114. Because pickleball courts do not belong on tennis courts.
115. The pickleball lines are distracting.
116. Pickle ball play is too loud.
117. PB noise isn't as loud as the players are mean.
118. Pickleball players take courts that were originally built for tennis
119. PB is loud and they don't share!
120. The access to courts, wait times, and space that pickleball has caused, is leaving me without anywhere to play tennis in the greater Nashville area. I'm happy pickle ball has such a fan base, but it is kicking tennis players off courts designed for them.
121. Because like Richland tennis courts, the pickleball players take over and argue with tennis players about priority or first come first serve. It's disheartening to show up to 4 TENNIS courts and they're all taken up by pickleballers.
122. Because Pickle balls lines mark up tennis courts
123. With an influx of casual pickleball players, tennis is losing its space in the city.
124. The Pickleball lines can be confusing for tennis players. There has also been drama with some Pickleball groups squatting on courts or giving to other Pickleball groups instead of tennis players who have been waiting longer
125. Because I want to reclaim the tennis courts that already exist for just tennis
126. Pickleball players are mean and aggressive and don't need to share with Tennis
127. Too much noise from pickle ball players
128. Pickle ballers are INVASIVE
129. Because of the pickle ball play, their balls roll into our court more often
130. More time for tennis
131. With blended lines it ends up turning into all pickleball anyways - they bring their nets, put one on each side of the court. Then it's almost impossible to play tennis because you'd have to wait for two different parties to finish PB at the same time.
132. Pickle ball players are often rude, do not respect time, leave it a mess, and paint illegal lines OVER the tennis regulated lines.

QUESTION 4 RESPONSES – SEPARATED COURTS

133. Pickleball players occupy courts for long periods of time
134. Pickleball is noisy/more boisterous, the lines are confusing, and i feel the tennis courts would be taken over by pickleballers, making tennis courts even harder to get than they are now.
135. Noise level of pickle ball is distracting
136. The pickleballers have taken over and the transitioning the courts between the two sports has become cumbersome and time consuming
137. Pickle ball players have no regards to tennis etiquette. They are often boisterous and rude with no concept of their surroundings and how their actions affect others.
138. So there is access to tennis courts not taken up by pickleball players
139. Pickleballers have no etiquette when it comes to court sharing, length of use, appropriateness, etc
140. Because then pickleball players don't have to interrupt tennis players games with the jovial noise of pickleball
141. If they weren't seperated, the pickleball players would take over courts and that's not fair to tennis players. I've seen this in other cities and in other courts where tennis players cant get access to tennis courts.
142. Don't PB players have more courts coming in? Why do they need to take tennis courts?
143. Pickle ball players are very aggressive and not nice to be around. Please keep them away!
144. Pickleball players don't share!! They aren't nice.
145. There is a limited number of tennis courts as is right now and commingling them will only increase the demand while frustrating two separate groups. It's a bad idea.
146. Because they are different sports. They usually bring their own nets and therefore can play on any surface anywhere. Whereas you can't play tennis on anything but a tennis court.
147. Noise and vibe are quite different. For those of us who play competitive tennis, Pickleball directly side by side with us is pretty distracting.
148. That way you can actually play tennis
149. Noise of Pickleball
150. Lines are confusing for tennis
151. Without designated courts, it's frustrating when there are no available courts because pickleball players are using the tennis courts and that would just continue.
152. Too many lines on the court. When one sport is there the other can't play. Pickleball is loud and can effect tennis players when they're playing next to each other.
153. Availability for tennis tournaments and league play. Also multiple lines on the court are confusing and sometimes distracting. Also the pickball clacking sound is very irritating and distracting.
154. Tennis courts are not equipped for Pickleball unless you have portable nets is the net height is different
155. Noise is a concern, but the long term effects of the ball used for pickleball starts to create divets in the court. (Go to Shelby Park and look)
156. As a tennis player it is frustrating to try to go play tennis and the courts are all occupied by pickleball players
157. Tennis courts are being ruined with pickleball lines painted and mobile nets being used.
158. Noise level, less lines on the court
159. We can NOT play USTA tennis matches on courts with PB lines and the noise and etiquette of PB players
160. We barely get on the courts for tennis because they are almost always occupied by pickleball players, for example, tennis courts on Elmington park .
161. Difficult to find courts for tennis
162. Lines can be confusing and if pickleball is played ona nearby court to tennis, it's super loud and distracting
163. The sounds of a pickleball bothers tennis players
164. Since pickleball is typically a group sport, teams have a tendency to hang out for longer periods of time and typical court sharing practices aren't possible. Often, tennis players are waiting long periods of time.
165. Because pickleball players play for hours at a time keeping tennis players from being able to play
166. Pickleball players tend to be rude and hog the courts.
167. I play tennis and pickle ball is SO loud and noisy
168. The noise makes focusing too hard, and also the cultures are so different
169. There aren't enough tennis courts available to tennis players. Make more pickleball courts and make those people pay more for their own courts!
170. The sound and intensity is distracting

QUESTION 4 RESPONSES – SEPARATED COURTS

171. Pickleball nets are not the same as tennis nets leading to nets being improperly adjusted or broken. The court size difference also means entire tennis courts can be occupied by a game that just needs half the space.
172. They are "tennis" courts. Pickleball should have to go through the same process tennis players did to have courts build not just appropriate other peoples hard work.
173. Pickle Ball is very loud. Many Players on the courts
174. Pickleball is significantly louder and tends to involve blasting music.
175. Pickle all is noisy and distracting to tennis players.
176. Pickle ball is crowded and noisy
177. Pickle ball lines and ball sound are distracting.
178. I coach High School Tennis for Antioch High School. We do not have sufficient courts for our school or Cane Ridge High School. What's more the pickleball community at Cane Ridge Park have illegally spraypainted lines and leave duct tape on the court.
179. Pickleball can play on any surface. Tennis nets are permanent park equipment.
180. Lines are distracting and pickle ball is loud
181. Pickle ball is loud
182. Playing next to pickle ball is noisy and a distraction
183. So we can have dedicated places to play tennis and not have them taken over by pickleball players
184. Opponents complain about the pickleball lines on the tennis courts. And with Maryland Farms YMCA closing their facility, tennis courts are more difficult to get.
185. I don't like the pickleball noise. It's also more common for pickleball players who did not grow up playing tennis to be poorly versed in racket sports etiquette.
186. Pickle lines can make it confusing for tennis player.
187. The different lines for tennis and pickleball can be distracting. Also pickleball is very loud and can also be distracting if playing next to a tennis match.
188. The pickle ball lines make it more difficult to distinguish the lines and there is less chance you will get a tennis court to play on!
189. Too many lines on a tennis court, when you add Pickleball lines and the NOISE of the paddle making contact with the plastic ball and pickle ball is disturbing to Tennis!!!
190. additional sets of lines make tennis more difficult. reduces the number of courts for tennis
191. When the pickleball lines are added to a tennis court - the lines do not match up so therefore can cause confusion during play.
192. Pickleballers take up valuable court time
193. Pickleball lines on a tennis court are confusing. Pickleball needs its own courts because they are taking over tennis courts making it nearly impossible for tennis players to find open courts.
194. Pickle ball players take up tennis courts a d not following the rules when it's their time to get off. Due to the size of pickle ball there are often 8 people on one tennis court and too many people for covid concerns.
195. Pickleball lines confuse tennis bounds calls
196. The courts are completely different in size and added lines on the tennis court is not helpful for beginning tennis players!
197. Noise of pickleball courts is distracting during a tennis match
198. There is already a shortage of tennis courts. Nashville population keeps growing, tennis is growing at record speed. Doesn't seem like the right thing to do is to add by subtraction.
199. Prefer only tennis courts
200. The confusion with the lines not matching tennis and the irritating noise of Pickleball
201. I want to play tennis and PB is too noisy
202. Because we are in need of more tennis courts and more pickleball courts in this area and combining the courts limits the amount of tennis courts.
203. Not enough tennis courts
204. Pickle ball players completely take over any courts with pickle ball lines by bringing a 10+ crowd to tailgate as games go on. Pickleballers do not respect the court when tennis is going on nearby - loud music, interrupting games, lingering on the court
205. Pickle ball is growing too quickly and using all combined courts not allowing tennis to be played.
206. Do not want to hear the noise of the ball
207. Do not like Pickleball lines on tennis courts.

QUESTION 4 RESPONSES – SEPARATED COURTS

- 208. Hard to see tennis lines with all the pickleball lines
- 209. Pickleball is very loud
- 210. Noise!
- 211. Pickleball is loud, and the lines make the court unappealing and difficult to play tennis on for line calls
- 212. Too many lines that distract calling shots
- 213. The pickle ball lines are too much on a tennis court. Also, the noise of pickle ball should be kept away from tennis.
- 214. Availability- we need more tennis courts especially the Maryland Farms YMCA is closing and WCPR are only renting our the facility for 9 months.
- 215. Pickle ball are too loud!
- 216. Pickle ball takes over ALL tennis courts
- 217. Pickle ballers are loud, come in numbers
- 218. Number of people
- 219. Noise, cultural differences, can't focus while playing
- 220. Tennis and pickleball are completely different sports and culture. It's hard to focus on tennis or get a court because pickleballers take over and don't have etiquette
- 221. They are not compatible in many ways. Pickle is noisier (some bring boom boxes) and because it is more social, they hang out all day and often don't leave courts
- 222. Lines don't distract in tennis
- 223. Too many lines on a tennis court can be confusing.
- 224. It can be difficult to see the proper lines if you're playing on a tennis court that has been lined for pickleball as well.
- 225. Tennis takes more concentration while pickleball is loud party atmosphere
- 226. Pickleball makes a distracting noise,. Not a fan of pickleball lines on tennis courts. Tennis courts shouldn't be compromised add more pickleball courts instead
- 227. Pickleball sound is distracting, lines on court are distracting
- 228. I only want to play tennis. Let PB do what they want.

Comments from Pickleball Perspective

- 1. I wish pickleball and tennis could coexist, but the differences in court are too much. Nashville needs dedicated pickleball courts like any other big city. I have to drive out to Mount Juliet to find free, dedicated pickleball courts.
- 2. I don't have a problem with court spaces being shared but there is a huge chance to build more public pickleball facilities. They don't take up as much space and could be easily publicly/privately funded
- 3. Pickleball courts deserve their own surface and area.
- 4. So there is no conflict with tennis players.
- 5. Tennis has different markings
- 6. Only play Pickleball
- 7. Tennis people need their own location lest they get angry...
- 8. tennis doesn't take priority
- 9. While the sports appear similar the cultures of each are very different. They don't mesh well and it's best to provide for each. Lastly, the demand for Pickleball is much greater than tennis and public funding to meet that request is justified.
- 10. permanent nets don't get kicked out when tennis players show up
- 11. Tennis snobbery
- 12. Sitting up and down portable nets can be a hassle
- 13. Need nets to be provided
- 14. Pickleball is smaller courts
- 15. PB is a social game with quick turnarounds so having the PB courts all together allows for more people to interact
- 16. Dedicated PB courts, better for the players and the game.
- 17. Prefer Pickleball courts
- 18. Pickleball players enjoy gathering in groups to play with different players.

QUESTION 4 RESPONSES – SEPARATED COURTS

19. Allows groups of people to play pickleball.
20. No overlapping lines or competing for courts. 2 people take a whole tennis court, meanwhile 8 people could play pickleball on something that size
21. Pb players are much more social and friendly
22. Dedicated courts for pickle bar are far superior than having to draw out lines every time. Plus there is no dispute between the tennis players and the pickle ball players
23. So that there are permanent pickleball nets.
24. Pickleball courts are smaller and should have their own space
25. Easier to see the lines to play and also avoids conflicts with tennis players.
26. Hopefully it means more actual pickleball courts and not just lines painted on tennis courts.
27. Have to lower net for pickle
28. Pickle ball needs their own courts
29. You can have two pickleball courts for every Tennis court. Tennis nets are higher.
30. No double lines. So the few tennis players won't complain.
31. Having 30 pickleball players waiting to play while 2 tennis players use the same space for an hour
32. When courts are shared you can be in the middle of a Pickleball game and if a tennis player arrives, you have to tear down your net and relinquish the court. This could happen after you've driven 25 minutes to play and are only 5 minutes into the game.
33. Combined makes lines hard to see. Also usually tennis nets separate multiple pickleball courts from each other which usually leaves little to no room to make full strokes. Its also really difficult when 8 players on 2 pickleball courts wait for 2 tennis,
34. Better Pickleball. Lines are easier to read.
35. Less lines, better painted lines, no sharing with tennis players, and you don't have to have your own net
36. No conflict with tennis folks
37. Because it makes it easier to distinguish the lines and I just enjoy playing on sticky pickleball courts over blended.
38. Pickleball way outnumbers tennis
39. Pickleball has different lines and net heights. Putting pickle ball lines around tennis lines can create confusion as well. Best to have Pickleball with dedicated courts.

Comments with General Complaints

1. PB players are mean!!!
2. PB players are mean!
3. I can foresee (have seen) the confront between pickleball and tennis player on courts national wide. Having combined courts will promote these type of incidences.
4. Why share courts?
5. Tennis is not pickleball. Does the golf course share space with frisbee golf? Was is this any different?
6. I don't have to share with as many people
7. Pickleball and tennis are very different sports and there never seems to be an equal amount of space available
8. Pickle ball players always use the tennis courts
9. Pickle ball players generally don't respect the tennis etiquette. Too loud to tally and players walk out on your court in the middle of a point. More of a yacht club than a sport that actually provides positive impact in the community
10. They are. Different sports
11. Don't like PB
12. Don't really care about PB
13. Pickleball is stupid
14. Pickle ball players at Richland Park are not very nice and don't share.
15. I have never had a good experience with PB players. They are not nice to tennis players.
16. Pickleball players are mean and very combative. I would prefer not to have to deal with them.
17. Pickleball people are mean at Shelby!

QUESTION 4 RESPONSES – SEPARATED COURTS

18. Because they are different sports. Just because they both have nets is not enough. If they played in the middle of a basketball court and there were lots of people waiting to play basketball would we be having this conversation.
19. Want court availability
20. Football is not played on a basketball court.
21. Because that's way it should be

Misunderstanding

1. Although it may seem advantageous to utilize any existing courts/spaces to their max potential by combining both, I believe that it does best serve players from either sport.
2. Because Tennis has priority in Public courts
3. Where did the tennis courts go?
4. It encourages group play.
5. Tennis only allows for more tennis plays

QUESTION 4 RESPONSES – COMBINED COURTS

Comments Based on Compromise

1. Most efficient use of resources
2. Saves space
3. More space is utilized this way
4. Saves space for more courts
5. This allows greatest flexibility and number of courts
6. More opportunity and flexibility for both tennis or pickleball players
7. Options for everyone. Tennis can't be played on a Pickleball court whereas Pickleball can be played on a tennis court. This assumes there are priority courts for tennis and Pickleball.
8. Opportunities for people of either sport. But as a tennis player whose courts have been taken over by large Pickleball groups, this would only work if we have more courts. The priority system also seems to be working well, with everyone respecting rules.
9. Because I don't see the city making separate courts
10. More likely to get funding and maintenance

Comments to Support Both Sports

1. So that the club could host pickle ball tournaments and tennis tournaments. Have courts designated for each but if not in use tennis or pickle ball can play if the designated courts are full.
2. One location
3. If people are not playing one or the other than the courts are available for other and not sitting empty
4. Options!
5. Multiple activities
6. More flexible space that can be used based on current demand. If pickle ball (or even tennis) is less popular in 10, 20 or 30 years, the courts will at least remain functional for one of the sports
7. Makes better use of them. But it may encourage more confrontations. 😬
8. I feel like Pickleball is a fad and in a few years they won't be played as much. Combined means both sports will have a spot to play in the future.
9. Lesser space to built courts
10. A lot of people play both, and like to switch between courts during playing.
11. Tennis courts with lines with pickleball lines for court use
12. Benefits all.

Comments from Tennis Perspective

1. I do not want tennis courts eliminated
2. So that tennis players don't get squeezed out by pickleball games. More courts available for both players is likely more advantageous for both groups. The key is providing enough locations!
3. Building new, dedicated pickleball courts would be pretty expensive, and private sector pickleball courts in development right now would serve the purpose just fine
4. Combined courts are preferred only if priority courts are dedicated to tennis. It's working well at Richland. While it's not ideal having 2 of the tennis courts taken away / dedicated to Pickleball, at least we have a chance to play.
5. Once it's PB no going back. PB is a fad also there are tons of business opening for PB. It's irresponsible to close tennis

QUESTION 8 RESPONSES

Comments from Tennis Perspective

1. Tennis players need more courts, PB isn't tennis!
2. As a tennis pro, I welcome the growing popularity of pickleball but not at the expense of losing all tennis courts. I'm am fond of places like Shelby park has made a system of usage and lines to normalize pickleball and tennis having its own space/time.
3. I think it's a mistake to invest a lot of money in pickleball so soon. Yes it's popular now but I have a feeling it's a fad that will eventually pass and we'll end up with all these unused pickleball courts everywhere.
4. Nashville needs more tennis courts, not less!
5. I'm an avid tennis player in and play throughout the city. I'm willing to drive wherever to play but it's getting harder and harder. There are numerous courts I play on that aren't listed in this survey. They also need to be resurfaced for tennis.
6. More tennis courts please.
7. The narrative that Pickleball doesn't have enough access is incorrect. Tennis which has more tennis players has less access by population density. The narrative that is being pushed by pickle ball is patently incorrect.
8. Multiple court lines are a distraction. Pickle Ball has a much higher noise level and can be distracting and a complaint in surrounding neighborhoods. Portable metal pickleball set ups damage court surfaces
9. Nashville needs more indoor courts. We are having to schedule matches in excessive heat or not play enough in the winter which is not ideal. Can the city team up with USTA to build a facility in Nashville instead of in Spring Hill?
10. There is a lack of good tennis courts in the area. With Pickleball picking up popularity, that even decreases the availability of courts.
11. There is a need for more tennis courts, more indoor tennis courts, pressure washed courts, and resurfaced courts. Maryland farms court closure will cause a void in the tennis community. Davidson County/ Nashville deserves to have online court booking.
12. The concern is the lack of indoor courts. Tennis is a very popular sport and it's tough to play during the winter months with the lack of indoor courts.
13. Centennial courts need help - why did PB move in there. I love playing tennis at Centennial!
14. More tennis courts please..
15. Why are tennis courts going away at Centennial to PB?
16. Pickle ball is a growing sport but like frisbee golf , roller disco, pelleton tae Bo etc, I don't believe if yet deserves funds reallocated from other popular sports and activities.
17. I would love to see more indoor or covered courts for year round play. A facility like the indoor tennis courts at the Sportsplex, that would dedicated to pickleball would be ideal! Being able to book time in advance is also preferred.
18. We desperately need more tennis courts with lights in the area. If the lights could get fixed at Glenclyff, that would help us be able to play year round. There are also courts like McGavock that have lights but the courts are in terrible shape.
19. Tennis will keep you alive longer than Pickleball.
20. PLEASE do not construct pickleball courts at the expense of tennis courts. Tennis courts are in DESPERATE need in this community, especially INDOOR TENNIS COURTS. Honestly Memphis, Chattanooga and Knoxville all have better tennis facilities than Nashville
21. Tennis facilities need to have at least four (ideally six or more) courts to work for league competition, which is how most frequent players compete. Smaller facilities simply don't work for league play.
22. I just suggest that we do not let the pickleball craze negatively impact the tennis community that has been a staple in Nashville for decades. It feels like we are slowly getting pushed out of existing tennis spaces vs just adding pickleball courts.
23. Tennis has always got/made funding for courts. Why can't pickle ballers do the same and build courts in a different area, rather than take what tennis courts we have. They are both growing sports and need dedicated space.
24. We'd love more indoor courts to enjoy tennis year round.
25. Keep tennis and pickle ball separate! Tennis courts or for tennis. Pickle ball players do not have the entitled right to take over tennis courts!!
26. "USTA growing by leaps and boundsWe need dedicated tennis courts to play on Including indoor courts PB plenty of private sponsors to build courts for profit

QUESTION 8 RESPONSES

27. zip code 37066 Tennis players from Beth Page-Gallatin-Hendersonville come into Nash to play tennis!"
28. Pickleball players are generally not respectful of wait times. I am often unable to play tennis despite waiting an hour for courts to clear because new people arrive and swap out with other pickleball players.
29. do not convert tennis courts to pickleball courts. there are shockingly few tennis courts in Nashville to the point where I am considering moving to a different city
30. "I was going to Litton park courts, but now they have all been updated to pickleball courts which is annoying. Often, there isn't anyone there and it was a great place to play.
31. Is there any funding to build additional courts to accommodate high demand?"
32. Pls do not combine. Save tennis court integrity!
33. "It would be helpful to perhaps not draw pickle ball lines on all the tennis courts.
34. Example: Shelby has four tennis courts. Draw lines on three courts but leave in court tennis-only. That way there would remain some dedicated tennis space. "
35. I've been playing tennis at Shelby since 2019 and pickleballers will walk across your court in the middle of a point they've even tried to kick me off the court by sitting on my bench & saying they have other people waiting. It's not a great environment
36. There's no illogical reason pickle ball courts shouldn't be built and exist separately from tennis courts. The popularity of tennis reached an all time through the pandemic of 2020, to decrease the number of available courts due to pickle ball is illogical
37. The tennis community is negatively affected by pickle ball. Pickle ball players make it extremely hard for tennis players to find public courts
38. Please add more tennis courts, particularly indoor
39. Several MNPS schools use Metro Parks tennis courts: Cane Ridge Park - Cane Ridge and Antioch and the courts at McGavock. A concern is that if pickleball courts are overlaid, there could be conflict with the schools' match schedules.
40. Pickleball population needs to fund and construct their own courts near noisy sport areas.
41. "Need more tennis courts in Nashville. It is a growing sport, and there are already too few facilities. Pickleball using the courts has only made the issue 10x worse.
42. Need some courts wholly dedicated to tennis.
43. I read somewhere where one community was adding pickle ball courts under highway overpasses which makes a lot of sense. If the courts are to be shared, only half should be allowed to be occupied by pickle ballers if tennis players are waiting,
44. The Shelby courts are constantly trying to be used by pickle ball players and often we can't even get in for tennis. Would love more courts there and ability to reserve. More courts in east Nash and maybe indoor courts east Nash as well!!
45. Tennis courts are dwindling in Nashville. Courts are harder and harder to come by, I haven't seen any "new" courts added in the community in a long time.
46. Please maintain or expand the existing number of tennis courts in nashville.
47. I'm an avid tennis player Emma playing any courts that I can find her not in the tennis courts in Nashville for me to play when I want because everyone keeps using them.
48. There aren't enough tennis courts properly resurfaced. We need to keep up tennis courts in the city. Many times people can't play on tennis courts.
49. We need additional tennis courts. Or, separate facilities should be built for pickleball. The courts are already saturated even bit taking pickleball into account.
50. Please make more public Tennis courts in Nashville, and even more critical is the maintenance of the existing courts. Due to the heavy Pickleball activities on existing Tennis courts, they have gotten damaged and too rough to play on.
51. We need more tennis courts in Nashville. I am having a hard time getting on a court. PB players keep sitting on the courts.
52. Please do not take away any tennis courts to be used for pickleball courts, it is already hard enough finding tennis courts and having pickle ballers use tennis courts makes it much more difficult!
53. I love tennis and prefer to play tennis. Don't like to be around Pickleball players.
54. Keep PB away from tennis players!
55. More tennis courts please, keep PB away from tennis.
56. Why are Pickleball players so mean. Can the city stop them from being so rude to others.
57. I am a diehard tennis player and want to play as much as I can wherever and whenever.

QUESTION 8 RESPONSES

58. Tennis needs a bigger home. Believe it or not tennis is popular and there are lots of players.
59. Watch out for PB players! I love tennis, and it is so much fun. However PB players are so angry and have no respect for others. They don't share well and can be very angry. I was yelled at the other day because I didn't want to play PB. Who needs that?
60. Tennis courts need to be priority!
61. A few public indoor courts for tennis.
62. Richland did a solid job with the priority tennis on courts 1 & 2, but then courts 3 & 4 are pickleball priority, so that's 4 TENNIS courts now dwindled down to 2. They should have their own specific courts to avoid these issues.
63. There are not enough tennis courts in Nashville. We need more tennis courts.
64. Pickleball seems to be more of a group sport with courts being used for longer than typical tennis matches. It is also a different pace game with much more chatter. One comparison would be pools with designated lap lanes and designated free swim areas.
65. keep more courts available for tennis
66. More tennis
67. Pickleball players are crowding tennis courts leading to less accessibility. Metro needs to build designated pickleball courts (and resurface all existing tennis courts across Nashville)
68. I know that pickleball is becoming a popular sport, but there are still a lot of us who play tennis. If first come, first serve I believe pb players would try to take over tennis courts. There needs to be courts set aside for tennis.
69. Tennis players don't like the noise nor the aggressive nature of Pickleball players I, please help. Add more tennis courts!
70. Tennis courts are under attack by aggressive PB players. There are fewer tennis courts now and PB have been very confrontational, I sometimes uncomfortable when they come out on tennis courts.
71. This is an utter disgrace that tennis players can't play tennis in our own city. A beautiful sport with more than a century of history in this country is being overrun by a new fad. Unless this changes Nashville won't ever have a local hero at the US OPEN
72. Tennis courts need to be on their own, there aren't enough of them anyway. Why can't PB get their own, besides they are not very nice to tennis players.
73. There is a HUGE need for TENNIS courts in nashville. I am on 3-5 teams a season and we are always scrambling to find space and often/ almost always have to go to Williamson County. We would be so proud to have good TENNIS courts in Davidson County
74. More tennis courts not less. Don't care about PB but want more tennis courts.
75. we need more tennis courts please
76. PB'ers really need their own courts. They are disrespectful to players and courts. The tennis community has funded the actual tennis courts. As a tennis player I pay league fees to support the upkeep of tennis courts. PB pay nothing
77. Please do not take tennis courts away.
78. Use the US Open color palette
79. Pickleball players don't adhere to tennis etiquette or rules according to the city parks: they play for hours at a time when the limit is 1.5 hrs
80. More tennis courts would always be great. We don't have enough indoor courts in Nashville
81. It would be great to designate tennis/pickle ball areas to a separate areas of the parks Noise is often distracting, and especially so indoors.
82. We lack tennis courts, and we certainly lack indoor tennis courts in safe neighborhoods !!!!!
83. The courts at McGavock, Cane Ridge, the Sportsplex and Hadley are all used for HS Tennis. We already have limited tennis courts for our matches & to resurface & redraw or draw new lines for pickleball will jeopardize the tennis programs at many MNPS HSs!
84. Support tennis!
85. I would just like to see more tennis courts available. I am excited about this survey and I hope the city will consider adding more tennis courts.
86. More tennis courts please, I just started and want to play more.
87. When I moved here 3 years ago I would always have to wait to use the public tennis courts due to the high demand. Now it is impossible to get time on the courts bc they are shared with PB. City needs to address the issue of providing more tennis courts.

QUESTION 8 RESPONSES

88. It's difficult enough trying to find available Tennis courts. We have a group that plays once a week (frequently paying at the Hadley Center for courts). So voting to combine courts seems silly. My vote is for more & separate. Also HITTING WALLS PLZ
89. Please build separated courts! Tennis players are being pushed out by the huge number of pickle ballers on TENNIS COURTS! Pickle ball courts do not require the same quality of court - paint empty Metro lots with pickle ball lines to accommodate demand.
90. If separate courts are done there needs to be a sign that says tennis only so that pickle ball players do not also use those courts. It is not uncommon to find pickle ball lines drawn/taped down on tennis courts that don't have lines already painted.
91. Please make more indoor courts for tennis
92. "Tennis courts are built for tennis. Use malls or build other courts. Too noisy. Damage is done to existing courts."
93. Tennis ❤️
94. tennis is the backbone to racquet sports. try not to forget what "serves" as the catalyst to racquet sports. tennis will be here for much longer (and already has) than any other racquet sport. dont forget...
95. More tennis courts in the Shelby park area

Comments from Pickleball Perspective

1. Any dedicated pickleball courts would be a huge boon to the Nashville area. If you look at the pickleball courts at Sgt. Mundy Memorial Park, they are constantly packed with people playing. I wish we could share with tennis, but I don't think it works.
2. Bellevue Rec center refuses to add pickle ball lines .. they say it confuses referees.. I disagree.. please help change their view point .. I pay taxes .. thank you!
3. We need major improvements with regards to more dedicated pickleball courts.
4. Pickleball is great, and the cost for building dedicated pickleball courts is quite low compared to the cost of building/renovating tennis courts. To have good facility, add pickleball courts to a new tennis development, but keep the two separate.
5. Pickleball is not a fad!!!!
6. Pickleball definitely deserves to have courts. It may take extended surveying, analysis to determine which would be most cost-effective, yet meet the needs of the community. For now, an additional of pb courts should be strategic in location and numbers
7. Be nice to have a Pickleball complex with 30 courts, so Nashville could host national championships!
8. "The new Ravenwood park in Hermitage would be perfect for pickleball court additions. 6-8 courts should be the minimum.
9. Check with Mt Juliet and see how they way underestimated the popularity and interest in the sport."
10. So many people are starting to play PB. We just need more courts. I played today & there were 20 people waiting to play! I think PB courts at Ravenwood would be awesome!
11. We definitely need more Pickleball courts in the Hermitage area.
12. 8-12 dedicated pickleball courts works best. Need 2 such locations and we would not need to encroach on tennis. Need 6-8 parking spaces per court. Include restrooms. Thanks for listening.
13. Please don't let the Sportsplex pickleball courts continue to deteriorate. It is a shame if those courts become beyond repair. I can't understand why basic maintenance to seal cracks is not being done. And there is no communication either.
14. We need more indoor courts and separate pickleball courts.
15. Very excited Nashville is taking notice of the increased interest in pickleball. We need more designated courts. Thank You
16. Davidson county has to step up - to cool of a city to not have dedicated Pickleball courts.
17. Need free courts. Companies are charging 10/Hr. Pickelball is mostly for older communities who are on retired/fixed incomes.
18. I would go with dedicated pickleball courts like they did at Peay Park in Goodlettsville. Well done there.
19. Want to see more permanent courts instead of temp layouts
20. Would love pickleball courts in East Nashville!!!

QUESTION 8 RESPONSES

21. I live near the McFerrin Park Courts, and would like to be able to play pickle ball there. I don't mind if there are tennis players there also.
22. Nashville and the surrounding areas are way behind in pickleball facilities. Many new locations are needed. Layout should be what is standard for public courts. Doesn't have to be fancy- just dedicated courts.
23. Big Demand for PB here in Nashville, the courts easily have 3x1 over tennis players. At the Richland courts alone, there is a 1-2 hr wait for a PB court every night, & longer on weekends. 10-18 players waiting vs only about 2 waiting for tennis.
24. Pickleball is growing a ton and don't see going away. Nashville would be much more enjoyable to live in with more courts that bring people together!
25. PLEASE improve the availability of pickleball courts her in Nashville. There are so many of us out here trying to play the game, both beginners, and advanced (including tourists coming in town looking to play). There just isn't enough courts here.
26. We need more dedicated pickleball courts. But in the interim, we really need to fix the lighting for courts that have overlaying pickleball lines. Tennis has several options w lights but many pickleball court options don't have lights or are shared.
27. Create a destination pickleball center within the city.
28. All of the east side tennis courts at the Sportsplex should be resurfaced and converted into proper Pickleball courts. Watch your revenues explode.
29. Would love indoor/outdoor pickleball in the Bellevue area
30. Pickleball is dominating the country now. At any given time you can ride by and see the difference in "tennis" and "pickleball" players. It is time that Nashville get on board and help us stay as relevant as Broadway.
31. Pickleball courts need to be free. No reservations allowed. Open play ALWAYS. Dedicated pickleball courts with the paddle system is a great way to start. Florida is a good example of courts that don't charge people money and are always open to randoms
32. "McFerrin's tennis courts are unplayable. Could this space be used for a pickleball center?"
33. No solutions are cheap or easy. Similar sized cities have dealt with this. San Diego had severe issues. Cincinnati has a great set up for both. Invest in a study?"
34. Pickleball needs it's own designated courts. We already have a shortage of Tennis courts to use for USTA matches and painting them with Pickleball lines is ruining the enjoyment of Tennis .
35. Pickleball is great for health AND COMMUNITY.
36. Allow more pickleball with curfew hours
37. Use all of Metro schools for pickleball
38. Nashville is way behind on dedicated pb courts. They must be separate for quality play. Please be aware of placement of pb courts close to residents. There are a number of complaints about pb noise when they are too close to homes. Early morning noise
39. "More pickleball courts help
40. Mental health. Also I wok at Vanderbilt with people with disabilities and a wc accessible court"
41. Please add as many as you can! Pickleball is a community sport, and when we go out to play we show up in the DOZENS!
42. Pickleball isn't as good on a tennis court. The lines fade and you have to bring your own net. Nashville has fallen far behind other cities in providing what citizens of all ages want—lots of dedicated pickleball courts in parks for open play. Indoor too.
43. The more courts designated for pickleball the better. Build designated courts in Donelson: Hermitage area.

Comments to Support Both Sports

1. Don't combine pickleball & tennis. They don't mix well.
2. If you feel Pickleball is a permanent sport and not a fad, then build Pickleball specific courts. Don't take over tennis courts.
3. More courts on the south side of the city would be awesome!
4. The courts deserve to be separated. We need more or both desperately
5. Both sports need to be accommodated.
6. Keep tennis and pickelball separate

QUESTION 8 RESPONSES

7. Update the McGavock Courts.
8. Please keep them separate but equal. Please do not combine tennis and pickleball courts. Please do not eliminate tennis courts in favor of pickleball.
9. Where raven wood golf course used to be is now owned by metro parks would be a perfect place for about 20 courts Already got parking lot and Clubhouse, where the golf course used to or anywhere in that massive plot of land between kolhs and 2 rivers park
10. Lines on tennis's courts allow the courts be used for both
11. Indoor courts would be preferred for an all year round use.
12. Need more courts in general indoor and outdoor
13. Courts in Hermitage and/or Donelson would be ideal. There aren't any there that I'm aware of.
14. Need some around Old Hickory
15. Good lighting and parking are needed.
16. Including lights at more courts so they may be used later into the year!
17. 8th Ave has one great court, but it's always in use! The south side of the city has a huge lack of courts. Happy to be involved and help. xxxxx@gmail.com
18. Dedicated courts allow for safe spaces without judgment for communities to flourish. With the lack of current locations many communities are hampered in progression and development
19. JT Moore needs to be resurfaced and lined. It could be very nice
20. "If you could add working lights to the bottom courts at Shelby that would be so helpful and give more people opportunities to play once it's dark.
21. Also if you could redo the pickleball lines at sevier park I think those courts would be utilized much more"
22. Please add some lights
23. There should be dedicated tennis courts (with no pickleball lines) and dedicated pickleball courts (with permanent nets and lines) in different parks across Metro Nashville. The junior tennis courts at Sportsplex are too small/dangerous for pickleball.
24. If you combine courts, line off 4 pickleball courts on 1 tennis court.
25. Racquet sports in general have become so popular we need 1) more indoor space and 2) dedicated tennis & pickleball. For example, my neighborhood courts are Shelby & it is difficult to just show up and play these days. More courts for everyone!
26. "The Cornelia Airpark would be a fantastic location for pb courts. Either in the hangars or open areas/field.
27. Also, appreciate the work done repaving tennis courts and adding pickleball lines. It helps as we transition to getting dedicated courts. "
28. More courts of both kinds please.
29. having designated pickleball courts would be helpful to both pickleball and tennis players as it's impossible to get a court to play tennis due to pickleball matches.
30. Need more of both courts- both are growing sports without enough spaces
31. The color of the pickleball lines makes a big difference for combined courts. The new lines at McFerrin park allow two pickleball courts per tennis court and the darker lines do not detract from the tennis court.
32. Having multipurpose courts is the worst of all options. The fact is, there is a lot of demand for pickleball, so we should be working to build them dedicated courts to meet the demand.
33. The Charlotte Park tennis have been padlocked since Sept. 2020 due to disrepair. The three courts are in a great location where an influx of new residents have moved in recent years, and near Richland, which is a very busy set of courts.
34. Charlotte Park courts have been locked and unsuitable for play for at least 3 years. Please fix them.
35. Please resurface and improve courts number 9, 10, and 11 at the SportsPlex! They are so bad, the staff at the SportsPlex don't even reserve them anymore. The cracks are so big, weeds are growing out of them. Thanks
36. If the city builds pickle ball only courts, that can never be undone. I think building tennis and having pickle ball use them when they bring nets makes more sense. It's a win win that way.
37. There is demand for more courts in both racquet sports. Preferably, permanent courts for both sports so that courts do not have to be shared and both groups can be accommodated. Studies from tennis reflect healthier lifestyles in youth and adults.
38. More tennis courts please and find a home for PB players too.

QUESTION 8 RESPONSES

39. Having both sets of lines painted allows the greatest flexibility at the space. If you only paint tennis lines on a court then you exclude anyone wanting to play pickleball, even if all the tennis courts are empty, which is frequently the case at Richland
40. Combined would give the most courts and allow the most people to be active whether tennis or pball. Either option should include pickleball lines on tennis courts so that when tennis courts are empty and pickleball people want to play, they can. Thanks!
41. West nashville near Bellevue really has no good courts. Please make these a priority. Also please position the courts optimally for the sun.
42. Shared courts are appealing because when the Pickleball trend fizzles (or everyone goes to the privately-funded courts in development), the courts can be used by the many tennis diehards who haven't gone anywhere, but just can't get a court lately :)
43. Separating the courts is ideal. Pickle ball players play horizontal to our (tennis) vertical. While tennis balls can cross into other courts at times, you have 2/4x the interference chance while trying to play tennis next to pickle ball players.
44. If there's an opportunity to add separate Pickleball courts without taking away current tennis court inventory (making those existing courts tennis-only) that would be fine with me!
45. We need more courts period. There is just so much demand. But also, invest in improving preexisting facilities with resurfacing, lights, etc. so that underutilized courts can absorb some of the excess demand at more popular spots
46. Tennis and pickle ball need to be separated!!!!
47. Think we need to build more courts to accommodate pickleball - not allocate existing tennis courts to pickleball. There is already a tennis court shortage that adds to a lack of diversity in the sport because being a part of clubs isn't accessible for all
48. Pickle ball should have their own courts built for them. Please do not insist that tennis give over their courts to a different sport.
49. Rather than a concern if courts are combined or separate. Most important is to not utilize the tennis net for pickleball. This is an issue at Elmington park where the pickleball lines use the tennis net. Very poor for pickle and is last resort option.
50. Management/ control of all courts is critical. We can coexist.
51. We need more racquet courts in Nashville in general, but please keep pickleball and tennis courts separate.
52. They're separate sports both with limited facilities to accommodate all the current players. New facilities should be added to support the growth of both sports.
53. Would love more options for playing. And those locations to have more courts.
54. Most tennis courts have room for 2 PB courts, 1 court on each side of the tennis net. That configuration enables more games to be played at once. It is important though to leave plenty of room behind the service line. Sportsplex too \$\$\$ (\$10) THANKS
55. We were introduced to pickleball on the tennis courts at Green Hills Park. They are in horrible condition...both for tennis and for Pickleball but it is a great location with room for expansion and would benefit the school also.
56. Pickleball is good but I like tennis better, played it most of my life just need their own courts
57. If having entirely separated courts is not feasible, I would like to see certain courts at the park that are tennis only. At Shelby for example, maybe racquetball only happens on 2 of the 4 courts.
58. The color of the pickleball lines matter. They are done nicely at Shelby park.
59. I have no preference for layout, but some courts in the west side of Nashville or Bellevue would be nice. There's no public tennis courts in Bellevue that are marked for pickleball.
60. Pickleball and tennis are two distinct sports featuring courts with different dimensions. More people would play both sports if there were separate courts and thus more availability for each.
61. Please separate pickleball courts so they don't take up the tennis courts and won't get off when their 90 mins come up:
62. We need more tennis AND more pickleball courts that are separate. We do not have enough tennis courts to meet the demand. PB facilities are being built & are coming to this area so our city should stop allowing PB to be added to our city tennis courts.
63. I was traveling 30+ minutes to courts that are not in great shape. It would make life so much easier to have good dedicated courts worth making the trip for. Would definitely travel more if there was a proper facility
64. Pickleball courts should always be separate from tennis

QUESTION 8 RESPONSES

65. Both sports are very popular and I would love to see the county build additional pickleball courts rather than converting tennis courts into dual use
66. Create a separate space for pickle ball and tennis. The demand for pickle ball pushes the tennis players out. Lining courts for PB only takes away from tennis.
67. "Pickleball: Cleveland east charlotte west
68. Tennis: mcferrin east richland west
69. Shelby should be half pickleball half tennis"
70. Lighter courts are a big are a big challenge. There are real shortages of pickleball courts with lights. There are more tennis options
71. "Need more of both. This should not be a trade off"
72. It's great that people want to play pickleball. But they are tennis courts and tennis deserves room too
73. Whether each park is dedicated to one sport or has dedicated courts for both sports, having them separated is ideal for everyone. I live in Fairview and am planning to start visiting our town hall meetings regarding courts out here.
74. I appreciate the opportunity to play at Metro Community Centers without a fee. I prefer playing indoors and would like to have more Pickleball hours scheduled for indoor Pickleball rec play, specifically, some evening hours.
75. Need for good nets and good lighting
76. If there's more courts if we share with tennis let's do it
77. Separate tennis and pickleball at different parks is best many tennis courts need maintenance

Comments with Suggestions, Locations, and Thanks

1. I would like to request 1) the restroom at all courts 2) lights for nights
2. The past 5-10 years produced several racquet club closures and the Metro Nashville tennis community lacks court space to accommodate the large tennis community. We are woefully lacking facilities compared to metro areas of Memphis, Knoxville, Chattanooga.
3. Cane Ridge park and Seven Oaks park
4. Maryland farms has the capability of indoor- and outdoor- it is surrounded by neighborhoods and businesses-
5. There need to be more indoor courts in Williamson county...period. The high schools need to open up their courts to the public during the day. There aren't enough outdoor courts for USTA matches throughout the year.
6. We need some in the southern part of the city
7. There needs to be more indoor courts in the Brentwood and Franklin area
8. Green or blue surface with bright white lines painted
9. There are very few tennis courts east of Nashville. Donelson Hermitage area have zero options. This is a problem. Thx
10. Glad yall are looking at this! I'd love to have a good solution to help both tennis and pickle ball players. Any solution that avoids combined pickleball/tennis courts is ideal, especially if that means newly constructed dedicated pickle ball courts.
11. Thank you for providing us a space to play
12. Would love to see courts one the Green Hills area.
13. Thanks for improving the courts
14. "Fixing lighting (regularly, when lights go out) would also help by providing additional hours when play could occur. Substandard lighting prevents the ability for many to play at night.
15. I avoid driving more than 10 min when court time is not guaranteed."
16. I like the setup at Shelby with separate tennis and pickleball but the lights 100% need to be fixed on the tennis courts!
17. "Lights at Shelby can be fixed asap which would help with playing in the evenings.
18. How come Stratford high school courts are locked on their weekends? Being able to use public school courts during non-school hours is helpful.
19. Please fix the lights at Shelby

QUESTION 8 RESPONSES

20. Need working lights for night play. Even one light out is problem. Install lights where none. Recommend parks w/limited courts have combined courts or dedicated pickleball. Parks w/more courts, esp. reservable, should have dedicated tennis courts.
21. Some metro parks have "priority days" and they really don't make sense. For example Shelby park's priority pickleball says fall on the same day has USTA Tennis Days. So pickleball doesn't actually get to use the courts.
22. The Shelby location has lights that need repair in order for people to play safely.
23. For there to be only one court that has lights at Shelby also plays a massive impact on the space available. I do think at the end of the day, two racquet sports need their areas. Can't play football and soccer on the same field, make it make sense.
24. Functioning lights for all the courts would be great to be able to play more at night. Specifically both sides of the Shelby courts get lights.
25. Hadley, McFerrin and Ted Rhodes all have cracks and would be great if those can be fixed
26. Please include lights! A lot of plan can and does happen after dark.
27. There should be an online system to request and reserve courts. Additional courts need to be built specifically for pickleball so tennis players can use the tennis courts. It is much easier to set up a pickleball court anywhere- not on tennis courts.
28. resurface cracks, fix Hillwood High school upper courts and remove grass growing on court
29. Repair charlotte courts
30. Thank you!
31. Gotta limit dinking... lol. Thanks for all you do
32. I'm surprised the Hillwood High School campus hasn't been upgraded . Those courts are used all the time and it'd be great to integrate or add Pickleball .
33. "There is a great open space in Sylvan Park at 51st and Wyoming. Back near the small parking lot to the Greenway is a big flat green space. Ideal for new courts.
34. Fenced in and well lit courts are preferred.
35. Facilities with bathrooms, lights, and parking are needed throughout the city. Online reservation system to reserve courts for lessons, groups, and league play would be great.
36. If we could get the leafs blown off the courts at Richland that would be fantastic
37. Thank you for seeking public input! Hopefully there's room to add more total courts.
38. Evening lights would be incredible, as would some sort of shaded area off court
39. There is so much space to expand the courts at Richland to meet demand for courts. You could probably get 12 tennis courts on the east side of the library where there is currently 4, leaving 7+ acres of wide open park still to the south & west of library
40. Please enhance Charlotte Park- awesome place- add lights too!! Thank you
41. Please revisit renovating the Charlotte park courts. There is a lot of interest in those courts being usable.
42. Courts also need quality lights to go along with them.
43. It would be great to get some public courts in the Nolensville Pike/Thompson Lane area :)
44. Thanks so much!
45. Courts need to have lights too!
46. Would love to see more lighting and windscreens installed on the courts after resurfacing projects. Thanks! :)
47. It would be nice if Granbery had 4 courts and lights. One huge improvement on all Metro courts would be a physical shade/weather protection over metal benches. Climate change is making it so hot that without some form of shade, tennis will not be played
48. The sevier park tennis courts are falling apart.
49. "My dad built the first indoor courts (1970)where the Nashville Ballet & Liff Opera are now. The Sportsplex indoors are named after my mother(Ruthelia's Tennis Ctr.) Nashville desperately needs public clay cts. & an improved tennis facility
50. Russell Buchi"
51. I just hope everyone has fun!
52. Thanks for the effort folks!!
53. Lights are essential

QUESTION 8 RESPONSES

54. Benches and shaded sitting areas are always welcome while waiting for courts. For tennis please remember at least 4 courts are needed for most events, leagues, junior programs. Less than that will not build a community around them.
55. Would love metro public park courts somewhere in donelson
56. Permanent Neuss available like Peay Park courts
57. Would like Shelby to have three courts inside instead of two and have longer periods. Shelby needs some bulbs replaced inside as well. Would like some permanent nets outside on one set of courts instead of having to have portable ones. Thanks!
58. We need more indoor capacity
59. Thank you very much for your efforts! Appreciate you! Have a good rest of your day!
60. Allow a reservation system! If court not claimed within 10 minutes of res it can be 1st come. They do this in Williamson county. It works great and regular people can play league tennis without joining a club. I love PB but don't allow it too close to residential
61. Sportsplex pickleball courts are in sad shape with all the cracks. Also, the fences are too close to the back lines. Courts need to be free. Restrooms would be nice, but not a main concern.
62. That curfews are enforced. Lighting is an issue. With Pickleball the noise is very loud.
63. Lights please at Shelby!
64. East Nashville has a small number of courts in good condition, and especially ones with working lights. For working people, it makes playing tough in the fall and spring when weather is very nice but there's limited daylight.
65. Would love to see working lights at all facilities. I've seen Pickleball (impressively) played by headlamp at Shelby's lower courts. I can play around cracks or sagging nets- working lights allow for longer periods of use by both sports.
66. Please add a tennis court option back to the Isaac Litton courts.
67. South Nashville needs more tennis courts. This part of the city is routinely looked over and the two courts in this area are badly in need of resurfacing.
68. Thank you for your efforts in thinking through this!
69. I just recently traveled to Las Vegas and got the opportunity to play at Sunset Park. It was absolutely incredible and I think a very good case study example of a well developed court.
70. Attention to the direction of the setting sun, if possible...courts should not look into the sun but rather be angled or perpendicular
71. Bellevue needs courts. This would help alleviate Richland
72. With only Bellevue Middle having three tennis courts, one of which has pickleball lines overlayed across one tennis net, there are not enough courts in Bellevue, in general.
73. Bellevue could really use some TLC. And it's a growing area and well used courts. Definitely look at it!
74. So many of the Metro tennis courts are in such bad shape! Really very little indoor opportunity as well, where you can get time! They need to do a better job of maintaining the courts!
75. Re do the old Hillwood HS courts. Help Bellevue middle school courts which are used mainly by residents
76. 1. Facility large enough to host USTA events. 2. West Nashville location. 3. Clay court option similar to Pelham Racket Club in Pelham, AL
77. Courts are needed in the 37221 zip code. Thank you!
78. I would love to see dedicated pickleball courts at Richland, Bellevue old library, and Brookmeade. There is NO dedicated public pickleball courts on westside. I have been going to Franklin to play and then stayed for lunch and shop in Williamson co.
79. Don't build less than 4 courts anywhere but 6-8 is more idea. Provide shade over seating
80. I play tennis at Hillwood high school tennis courts. Additional information or more availability around Bellevue would be ideal for me.
81. It would be great to see lines put down at Bellevue Community Center and more time. Bellevue has two great locations for outdoor courts Harpeth Knoll Park and Harpeth River Park Hidden Lake. There are no nice courts on the west side of Nashville.
82. Our community center, to my knowledge, is the ONLY one that won't paint pickleball lines in the gym. We need more indoor courts!
83. We really need some public courts in Bellevue!
84. "Elmington courts are FANTASTIC!"
85. Idea: partner with metro schools and put pickleball lines on both sides of tennis courts at every school."

QUESTION 8 RESPONSES

86. "At least 4 courts and good lighting as many places it's hard to find that combination. You could have two and two not 4 courts in tow, but that is the minimum with a North to South orientation.
87. Tennis only. Pickle ball should have their own courts."
88. Indoor courts are what is needed.
89. About 30 minutes of travel seems reasonable.
90. More with lights please. More indoor options bc of extreme heat in summer and then wet cold in winter. Prefer separate from pickle ball BUT if we need partner to get more indoor court options then that is fine! Perhaps do alternate time windows and days?
91. Sooner the better, long overdue
92. "Engage children in community to participate or create a league and lessons
93. Set timer on lights to shut off. Lights illuminate houses interior
94. Set aside time schedule for community center league "
95. Shelby park, air park could have 8-10 courts outdoor and even have some pickle indoor in the hangars. Both easy to accomplish in north end of hangars area
96. Color selection. Shelby is very hard to see lines. Blue on blue
97. Stratford high has 3 courts which were available after school & on weekends until a month ago. Now they're padlocked for no access. The school rarely uses them. There could be a partnership b/w schools and public even if a fee is charged for maintenance
98. There should be a mechanism for court rule enforcement or conflict arbitration. For eg a point of contact at the parks dept
99. Fencing at Sportsplex pickleball courts are too close to the back lines. Hadley Park indoor bubble needs dedicated pickleball and tennis. Need covered/ indoor pickleball courts due to demand and desire to play during hot, cold, rainy, and windy times.
100. Centennial is a great central location for players in Davidson and surrounding counties. Even though I live in Sumner County, I eat, shop & buy gas in Nashville scheduled around my tennis activity. We did the same for hockey at Sportsplex for many years.
101. I drive to Maryland Farms and Coolsprings because not available in my area
102. I'm annoyed that this event is only about outdoor pball. There is plenty to discuss about indoor as well
103. Restrooms needed, lights would be nice
104. Please don't forget Green Hills Park thank you
105. The GreenHill Park has tennis courts with pickleball lines, but the courts need resurfacing badly! The school at JT Moore also like to use these courts for middle school team
106. Please don't forget Green Hills Park the courts are in very bad shape
107. There are four tennis courts at Centennial 9-12 that have not been playable for 3 years. How can you do other projects and not fix your premier courts
108. Thanks for this opportunity
109. McGavock park needs major renovations. Proposed Cedar Hill Park design is awesome! Keep existing courts.