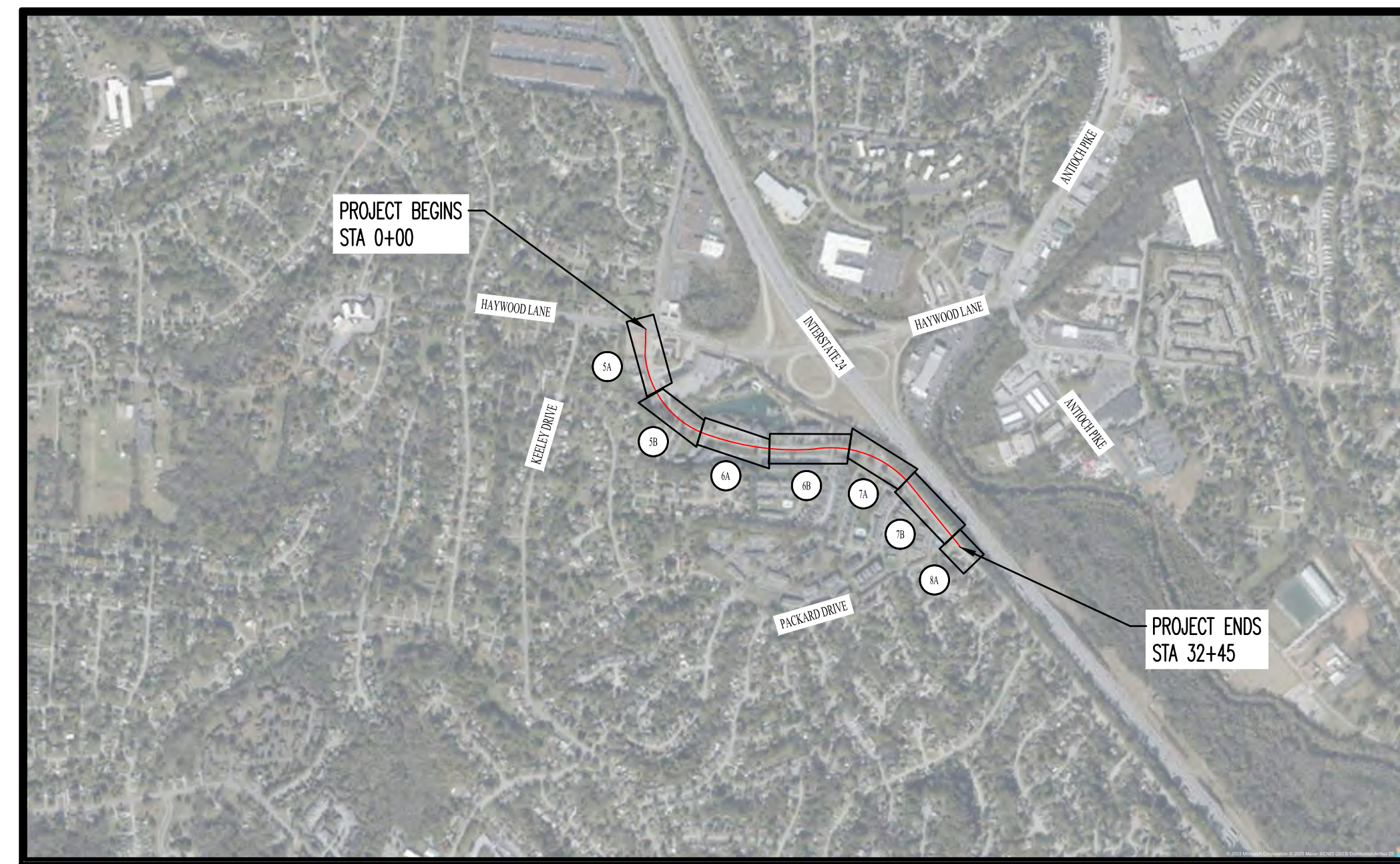


METROPOLITAN GOVERNMENT OF NASHVILLE AND DAVIDSON COUNTY, TENNESSEE

APACHE TRAIL BIKEWAY IMPROVEMENTS FROM HAYWOOD LANE TO PACKARD DRIVE SEPTEMBER 2023



LOCATION MAP
SCALE: 1"=1000'

DRAWING INDEX

- 1 COVER SHEET
- 2 TYPICAL DETAILS
- 3 TYPICAL DETAILS
- 4 TYPICAL DETAILS
- 5 PROPOSED LAYOUT
- 6 PROPOSED LAYOUT
- 7 PROPOSED LAYOUT
- 8 PROPOSED LAYOUT



LDA ENGINEERING

REV	DATE	REVISION DESCRIPTION

METROPOLITAN GOVERNMENT OF NASHVILLE
AND DAVIDSON COUNTY, TENNESSEE
APACHE TRAIL BIKEWAY IMPROVEMENTS
FROM HAYWOOD LANE TO PACKARD DRIVE



PROJECT NUMBER:	MET008
DATE:	9-2023
SCALE:	
DRAWN BY:	JEP
DESIGNED BY:	NHP

SHEET TITLE:
COVER SHEET

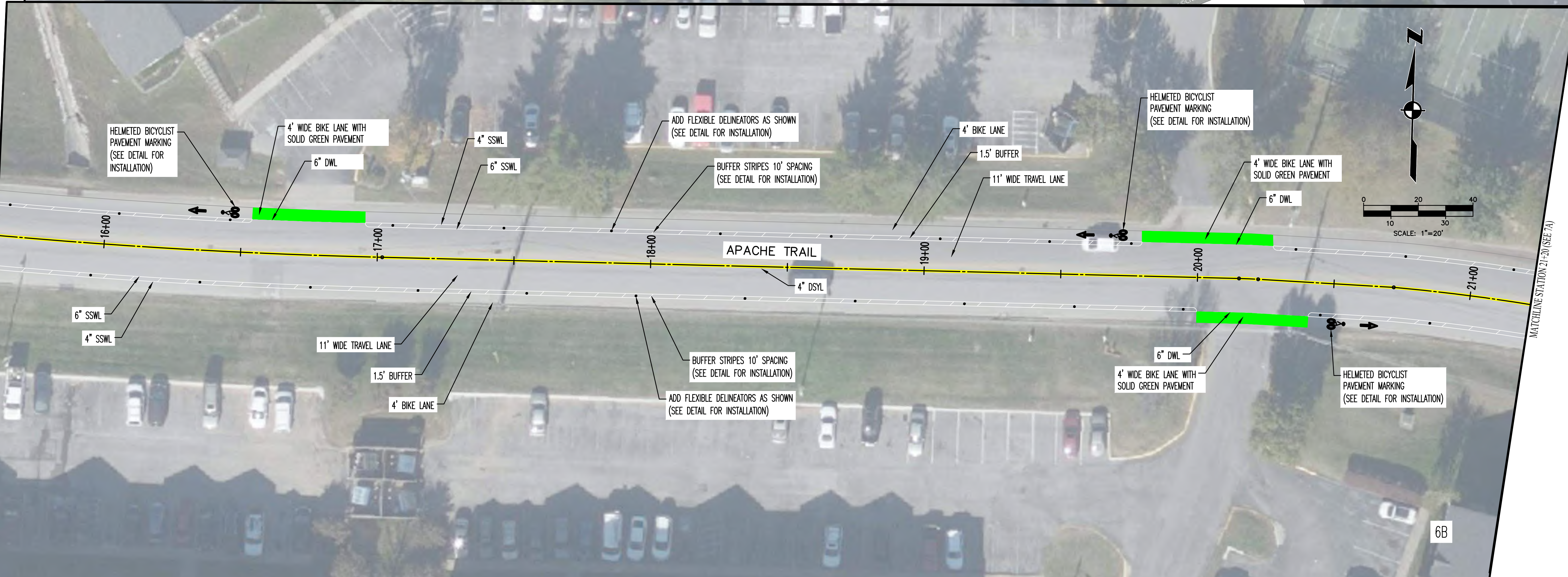
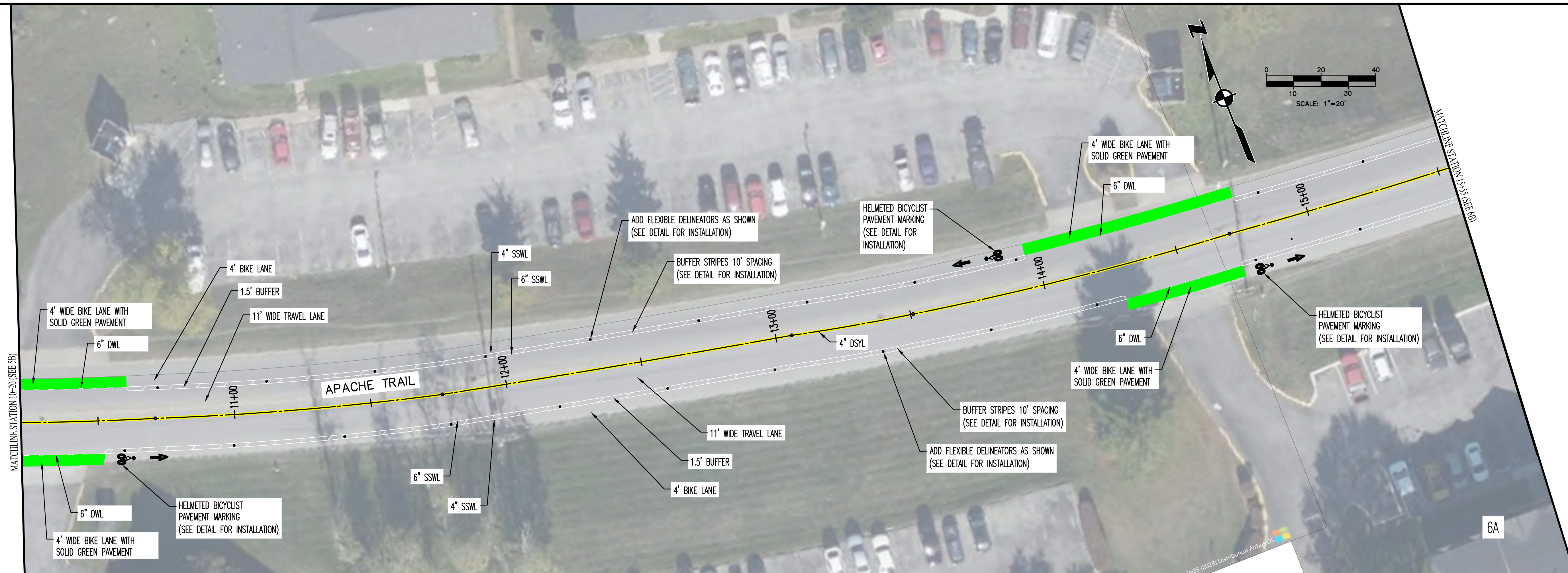
C:\METRO2_BIKWAYS\METRO2_D00_FASTRACKS\030_APACHE_TRAIL\CONCEPTUAL_DESIGN\SHEET_FILES\METRO2_APACHETRAIL_COVERINGS_9/15/2023_3:33 PM_JAMES PICKERING



LDA ENGINEERING
402 BNA DRIVE SUITE 403
NASHVILLE, TENNESSEE 37217
TELEPHONE: 877-754-8254
FAX: 865-573-1352

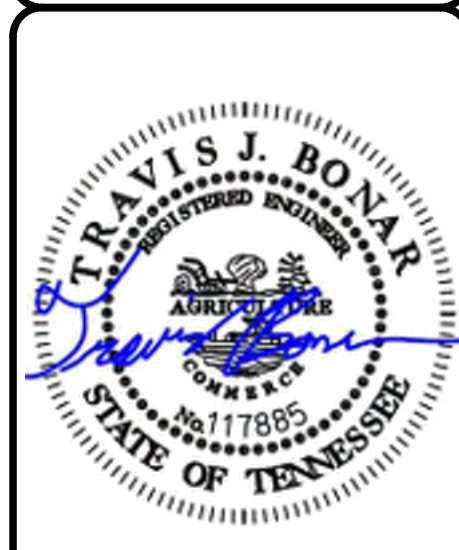
THIS DOCUMENT AND THE IDEAS AND DESIGNS INCORPORATED HEREIN, AS AN INSTRUMENT OF PROFESSIONAL SERVICE, IS THE PROPERTY OF LDA ENGINEERING AND IS NOT TO BE USED, IN WHOLE OR IN PART, FOR ANY OTHER PROJECT WITHOUT THE WRITTEN AUTHORIZATION OF LDA ENGINEERING.

C:\MET002\BREVIS\MET002_000_FASTTRACKS\030_APACHE TRAIL\CONCEPTUAL DESIGN SHEET FILES\MET002_000_APACHE TRAIL_09/15/2023 3:35 PM_JAMES PROBERING



REV	DATE	REVISION DESCRIPTION

**METROPOLITAN GOVERNMENT OF NASHVILLE
AND DAVIDSON COUNTY, TENNESSEE**
APACHE TRAIL BIKEWAY IMPROVEMENTS
FROM HAYWOOD LANE TO PACKARD DRIVE

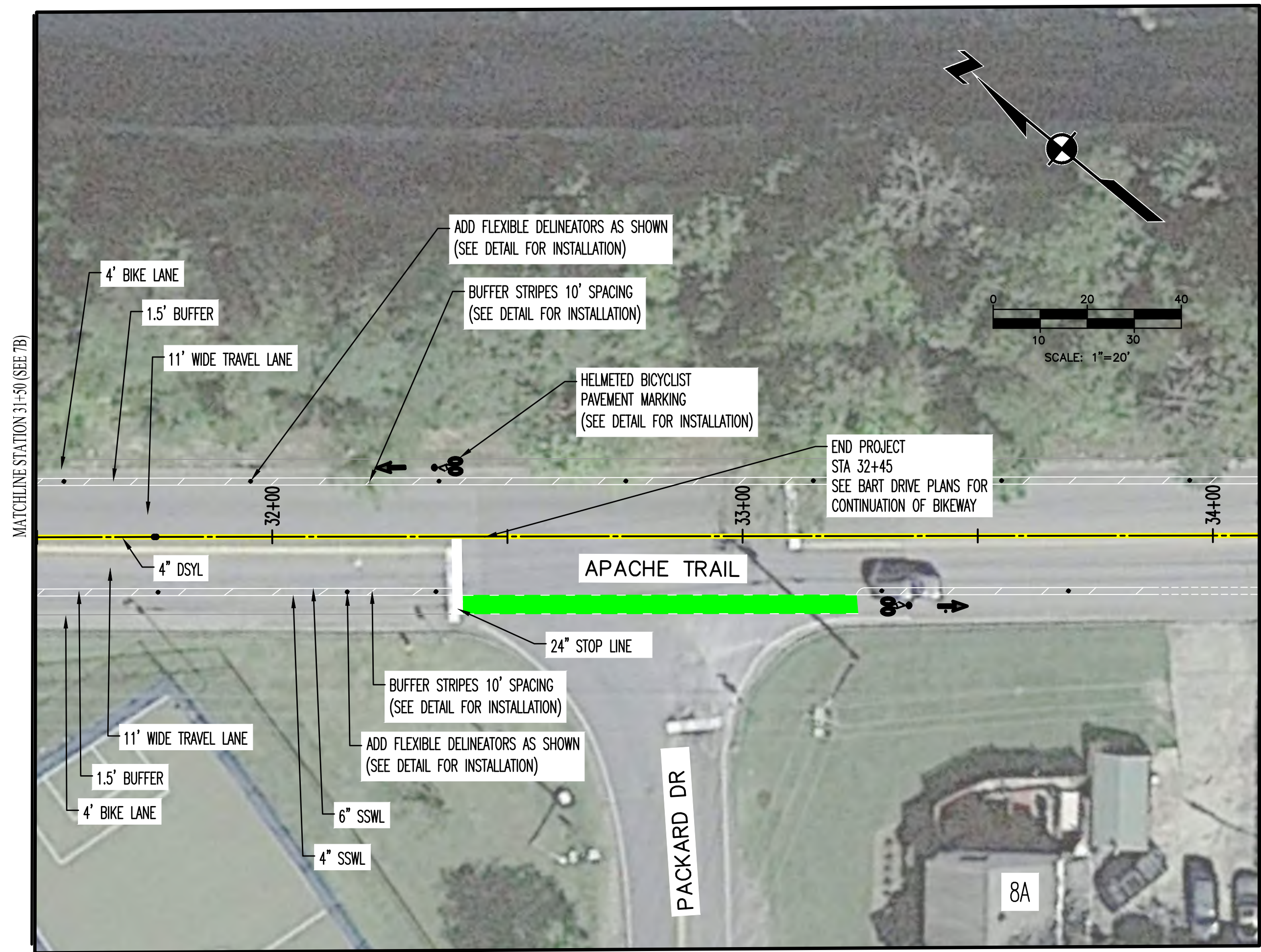


PROJECT NUMBER: MET008
DATE: 9-2023 SCALE: 1"=20'
DRAWN BY: JEP DESIGNED BY: NHP

SHEET TITLE:
PROPOSED LAYOUT

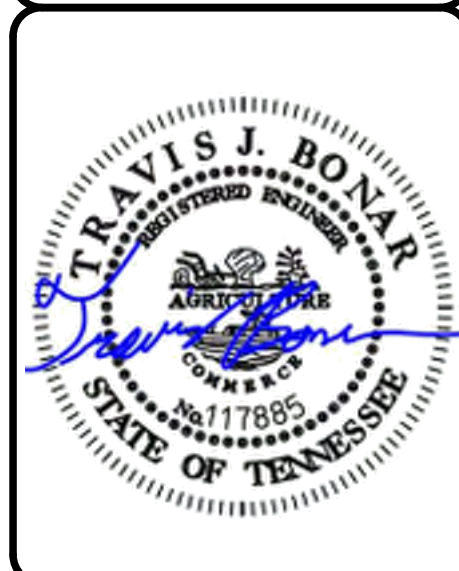
THIS DOCUMENT AND THE IDEAS AND DESIGNS INCORPORATED HEREIN, AS AN INSTRUMENT OF PROFESSIONAL SERVICE, IS THE PROPERTY OF LDA ENGINEERING AND IS NOT TO BE USED, IN WHOLE OR IN PART, FOR ANY OTHER PROJECT WITHOUT THE WRITTEN AUTHORIZATION OF LDA ENGINEERING.

C:\MET002\BHWK\MET002_000_FASTRACKS\030_APACHE TRAIL\CONCEPTUAL DESIGN SHEET FILES\MET002_APACHE TRAIL\MET002_APACHE TRAIL_9/15/2023 3:35 PM.JAMES PROKING



REV	DATE	REVISION DESCRIPTION

METROPOLITAN GOVERNMENT OF NASHVILLE
AND DAVIDSON COUNTY, TENNESSEE
APACHE TRAIL BIKEWAY IMPROVEMENTS
FROM HAYWOOD LANE TO PACKARD DRIVE



PROJECT NUMBER: MET008
DATE: 9-2023 SCALE: 1"=20'
DRAWN BY: JEP DESIGNED BY: NHP

SHEET TITLE:
PROPOSED LAYOUT