

ESTIMATED QUANTITIES

SPEED CUSHIONS

6' X 10.5' SPEED CUSHION WITH ONE ARROW	14
---	----

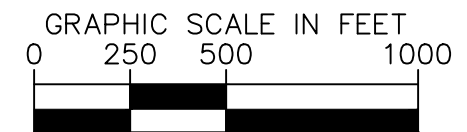
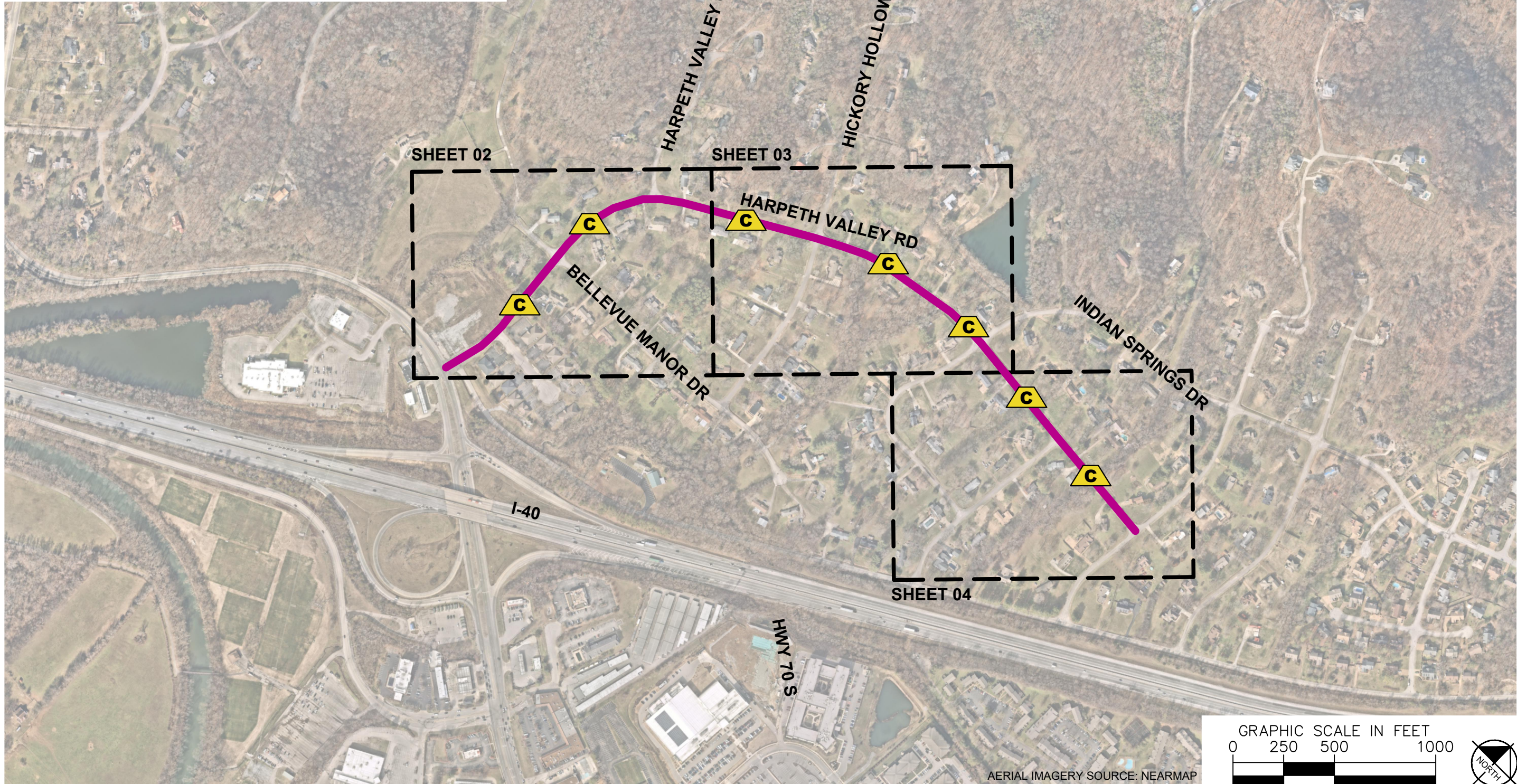
SIGNING

W17-1 (VAR.) "SPEED CUSHION" SIGN (30" X 30")	14
W13-1P "20 M.P.H" SIGN (18" X 18")	14

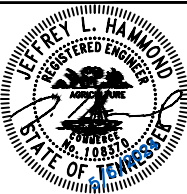
NOTE: ALL LOCATIONS ARE REFERENCED FROM CENTERLINE OF DRIVEWAYS OR OTHER LANDMARKS TO THE CENTER OF SPEED CUSHIONS OR SIGNS.

LEGEND

-  LIMITS OF TRAFFIC CALMING PROJECT
-  SPEED CUSHIONS



AERIAL IMAGERY SOURCE: NEARMAP



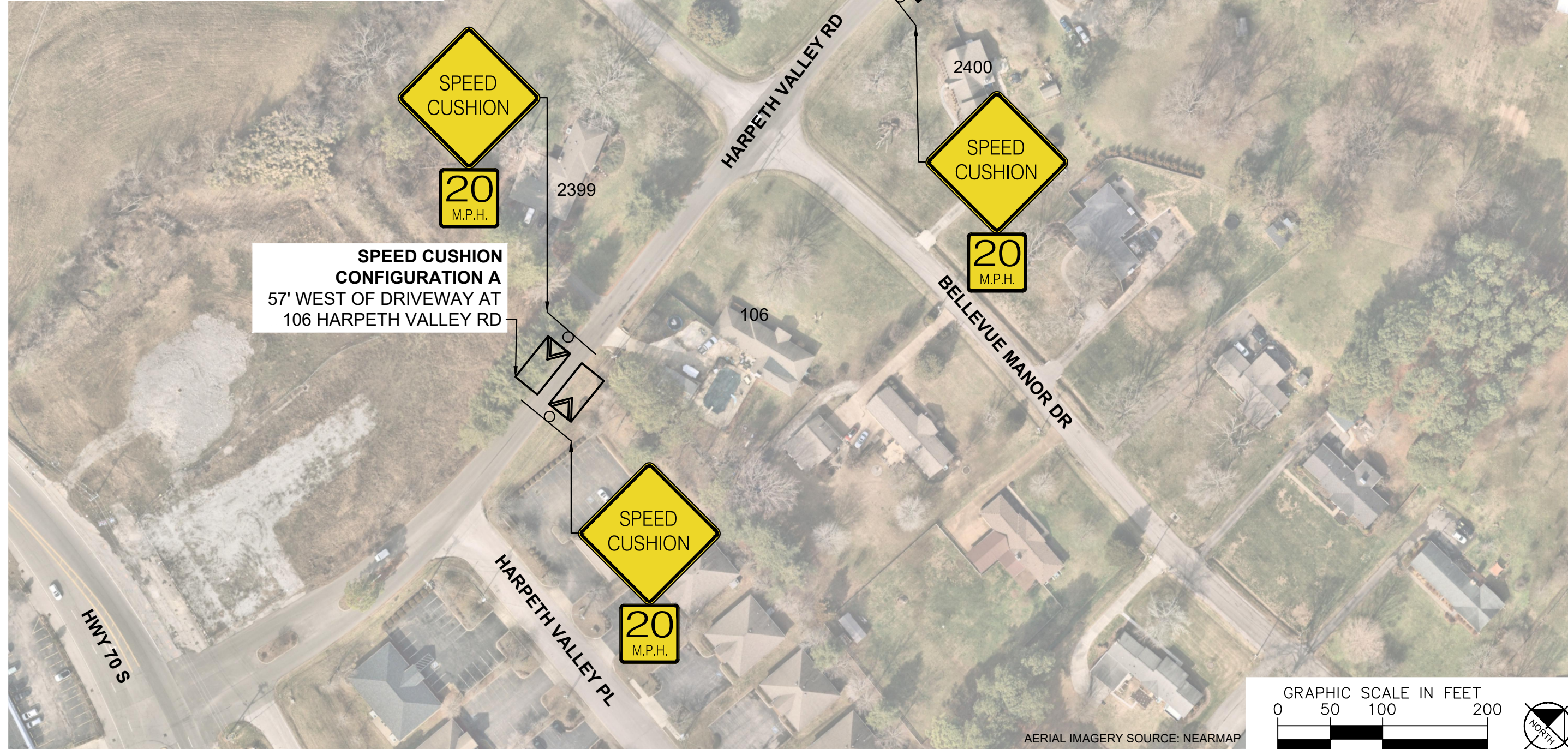
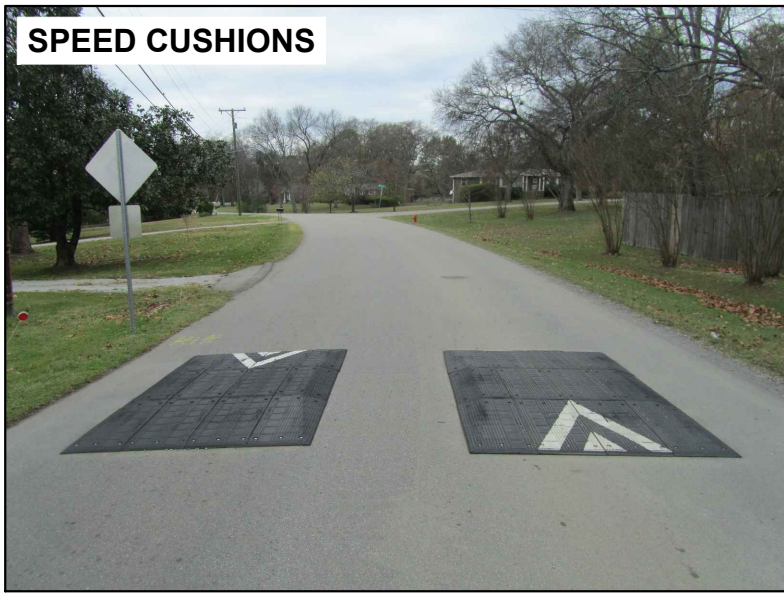
DESIGNED BY: JLH
DRAWN BY: JCB
CHECKED BY: NDOT
DATE: 5/8/2024
KIMLEY-HORN PROJECT NO. 118900046

KEY

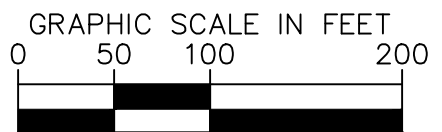
SHEET NUMBER
01

This document, together with the concepts and designs presented herein, is intended only for the specific purpose and client for which it was prepared. Reuse of and improper reliance on this document without written authorization and adaptation by Kimley-Horn and Associates, Inc. shall be without liability to Kimley-Horn and Associates, Inc.

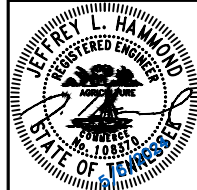
SPEED CUSHIONS



AERIAL IMAGERY SOURCE: NEARMAP



HARPETH VALLEY ROAD
TRAFFIC CALMING
NASHVILLE, TN



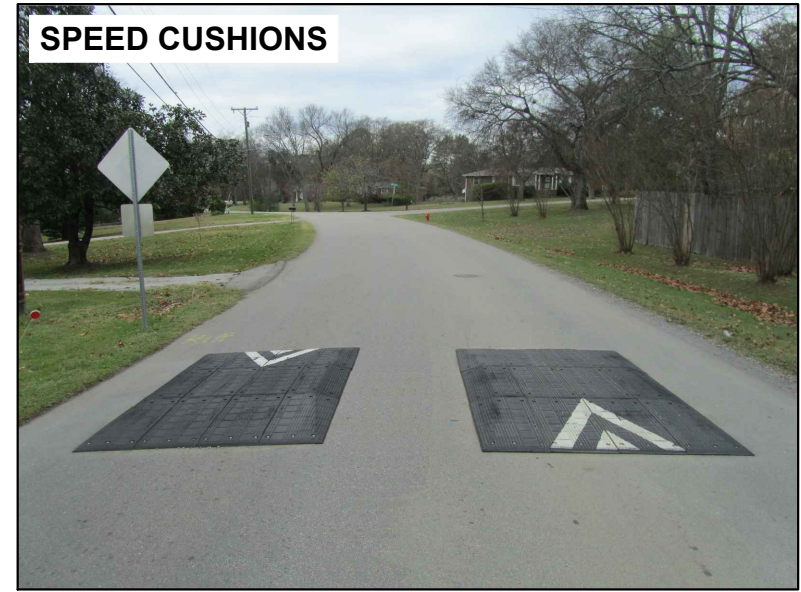
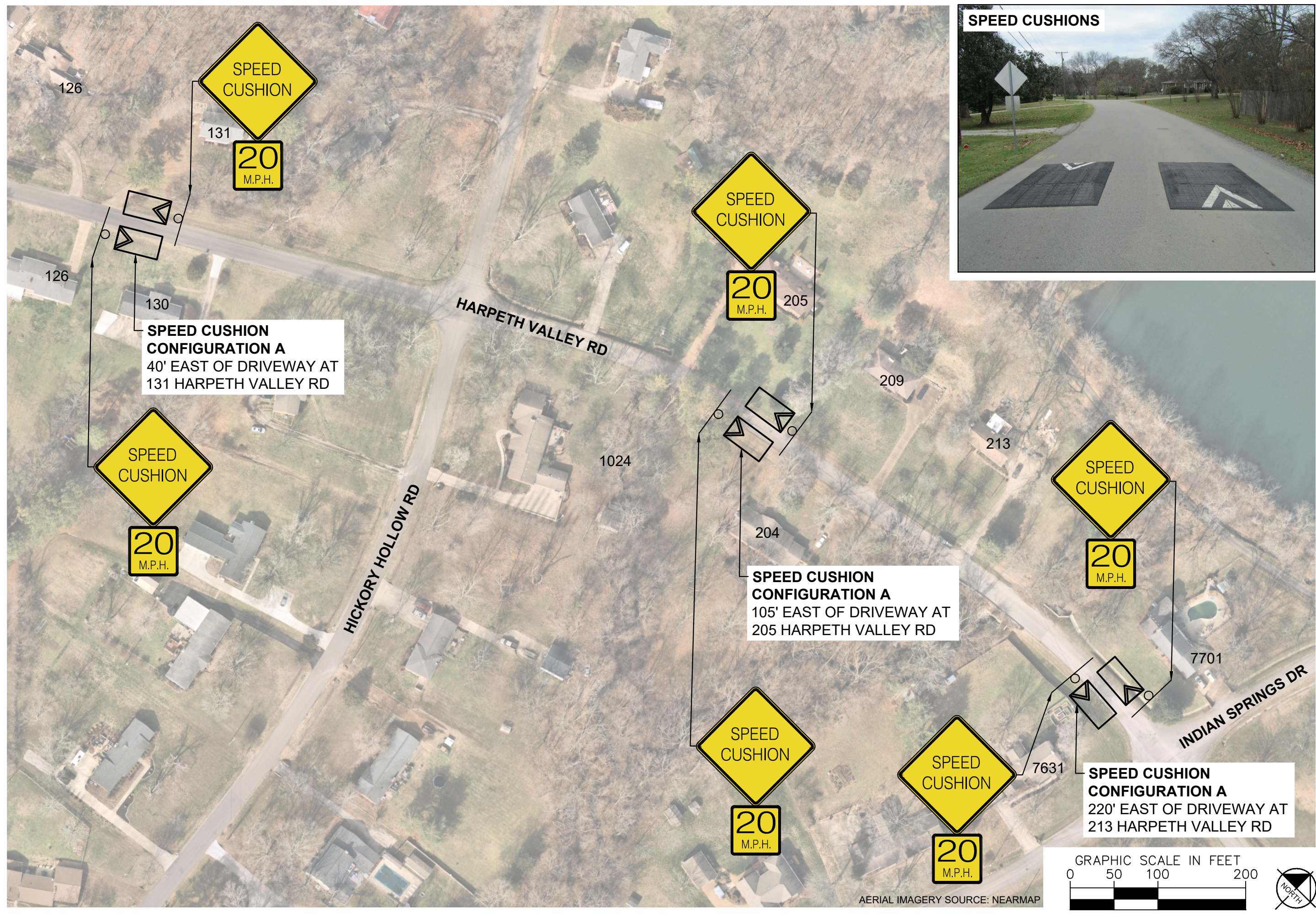
DESIGNED BY:	JLH
DRAWN BY:	JCB
CHECKED BY:	NDOT
DATE:	5/8/2024
KIMLEY-HORN PROJECT NO.:	118900046

CONCEPT

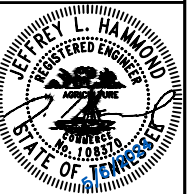
SHEET NUMBER
02

This document, together with the concepts and designs presented herein, is intended only for the specific purpose and client for which it was prepared. Reuse of and improper reliance on this document without written authorization and adaptation by Kimley-Horn and Associates, Inc. shall be without liability to Kimley-Horn and Associates, Inc.

This document, together with the concepts and designs presented herein, is intended only for the specific purpose and client for which it was prepared. Reuse of and improper reliance on this document without written authorization and adaptation by Kimley-Horn and Associates, Inc. shall be without liability to Kimley-Horn and Associates, Inc.



SPEED CUSHIONS

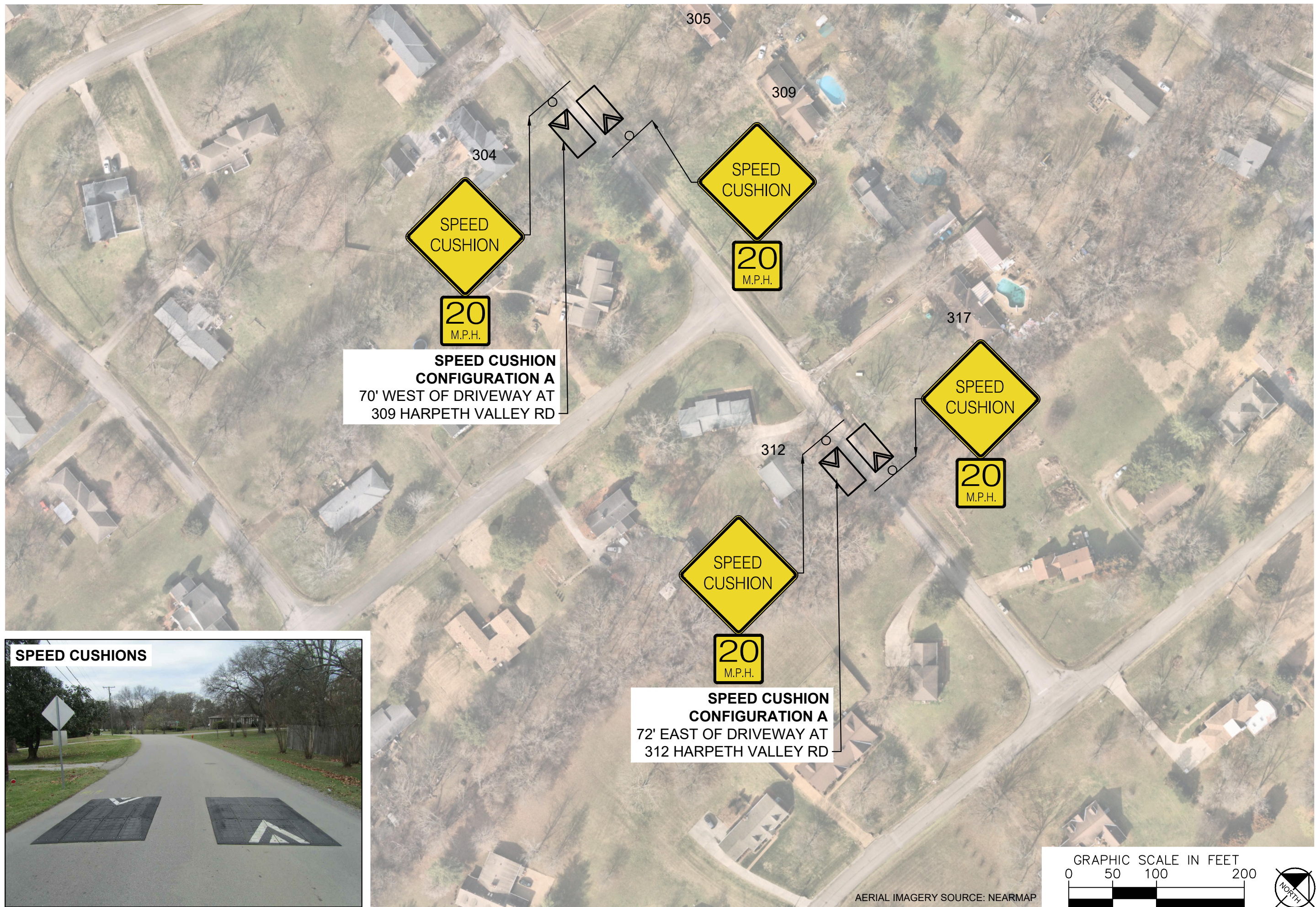


DESIGNED BY:	JLH
DRAWN BY:	JCB
CHECKED BY:	NDOT
DATE:	5/8/2024
KIMLEY-HORN PROJECT NO.:	118900046

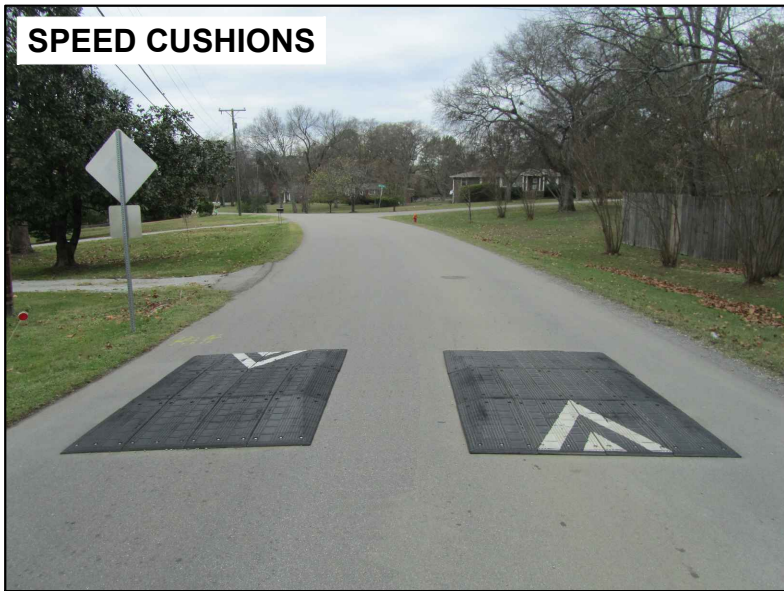
CONCEPT

SHEET NUMBER
03

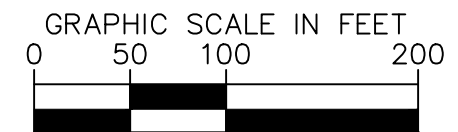
This document, together with the concepts and designs presented herein, is intended only for the specific purpose and client for which it was prepared. Reuse of and improper reliance on this document without written authorization and adaptation by Kimley-Horn and Associates, Inc. shall be without liability to Kimley-Horn and Associates, Inc.



SPEED CUSHIONS

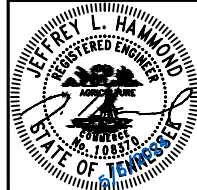


AERIAL IMAGERY SOURCE: NEARMAP



NDOT

**HARPETH VALLEY ROAD
TRAFFIC CALMING**
NASHVILLE, TN



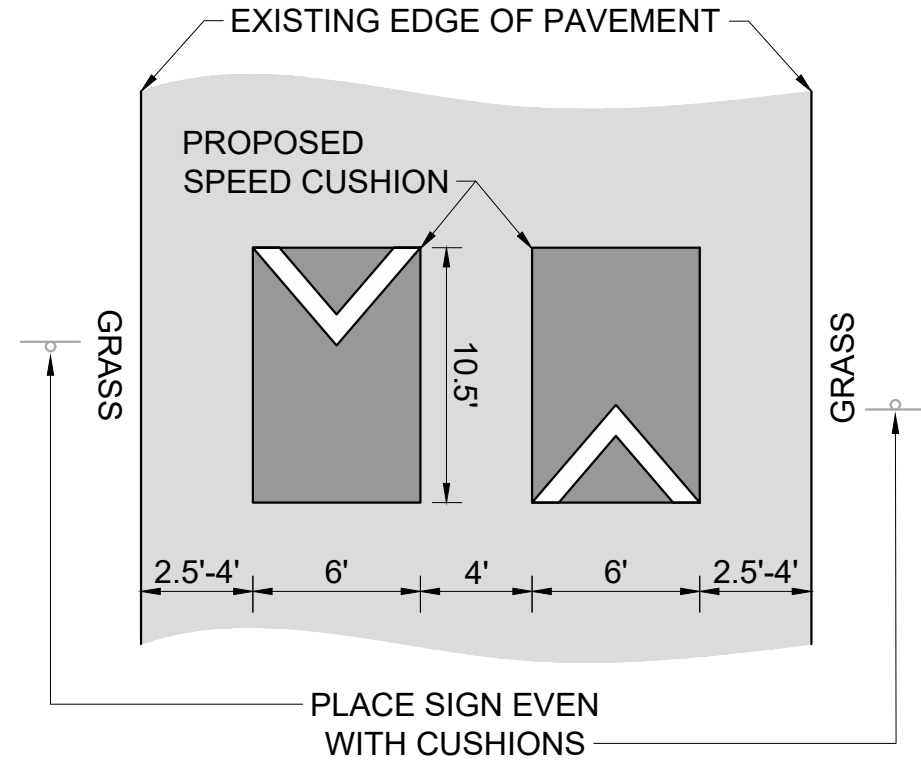
DESIGNED BY: JLH
DRAWN BY: JCB
CHECKED BY: NDOT
DATE: 5/8/2024
KIMLEY-HORN PROJECT NO. 118900046

CONCEPT
SHEET NUMBER
04

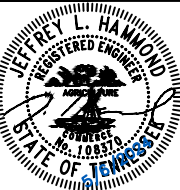
This document, together with the concepts and designs presented herein, as an instrument of service, is intended only for the specific purpose and client for which it was prepared. Reuse of and improper reliance on this document without written authorization and adaptation by Kimley-Horn and Associates, Inc. shall be without liability to Kimley-Horn and Associates, Inc.

CONFIGURATION E

21'-24' OF PAVEMENT



HARPETH VALLEY ROAD
TRAFFIC CALMING
NASHVILLE, TN



DESIGNED BY:	JLH
DRAWN BY:	JCB
CHECKED BY:	NDOT
DATE:	5/8/2024
KIMLEY-HORN PROJECT NO.:	118800046

DETAIL

SHEET NUMBER
05