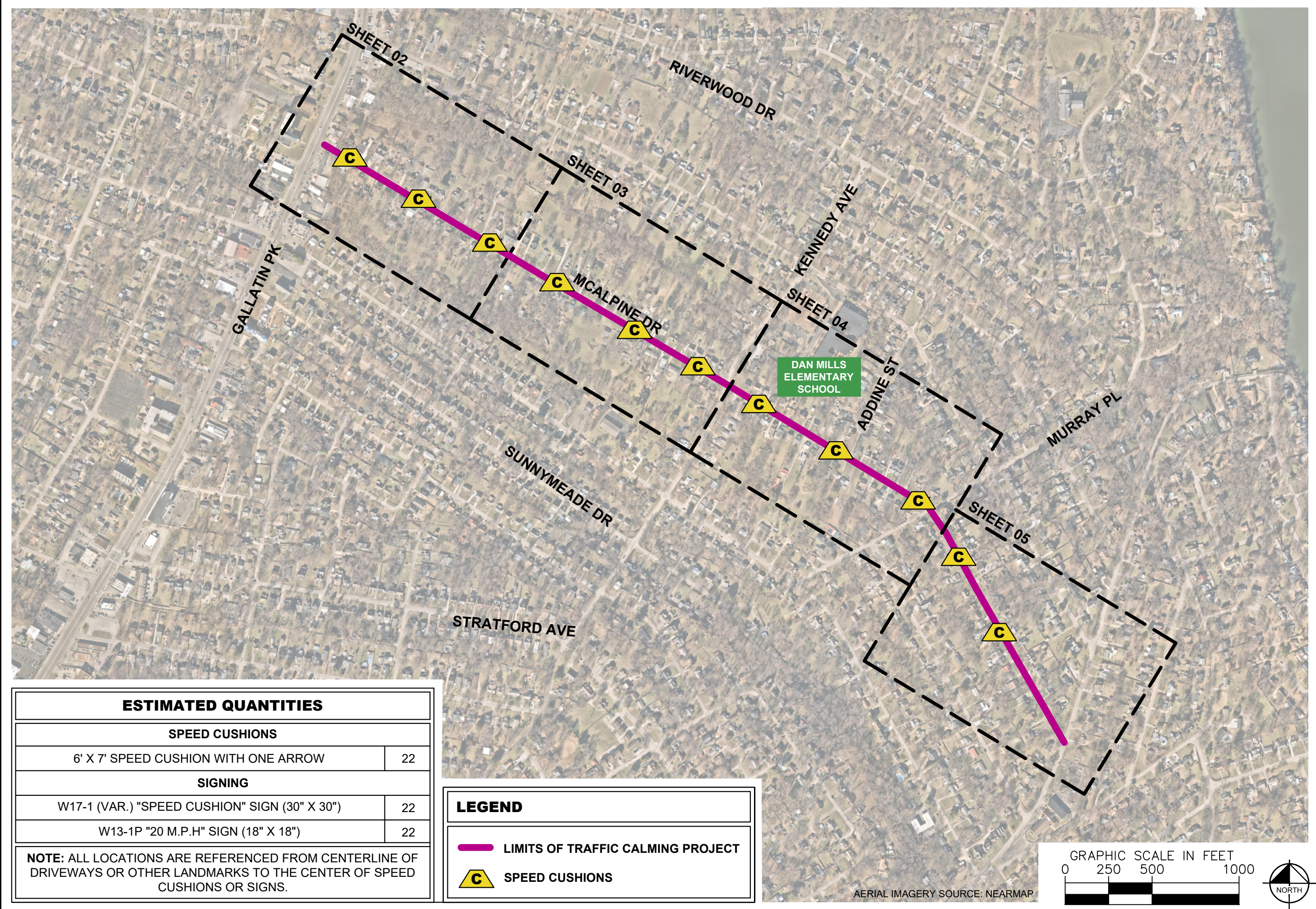


This document, together with the concepts and designs presented herein, is intended only for the specific purpose and client for which it was prepared. Reuse of and improper reliance on this document without written authorization and adaptation by Kimley-Horn and Associates, Inc. shall be without liability to Kimley-Horn and Associates, Inc.



ESTIMATED QUANTITIES

SPEED CUSHIONS

6' X 7' SPEED CUSHION WITH ONE ARROW	22
--------------------------------------	----

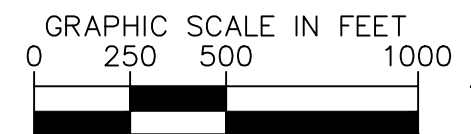
SIGNING

W17-1 (VAR.) "SPEED CUSHION" SIGN (30" X 30")	22
W13-1P "20 M.P.H" SIGN (18" X 18")	22

NOTE: ALL LOCATIONS ARE REFERENCED FROM CENTERLINE OF DRIVEWAYS OR OTHER LANDMARKS TO THE CENTER OF SPEED CUSHIONS OR SIGNS.

LEGEND

- LIMITS OF TRAFFIC CALMING PROJECT
- C SPEED CUSHIONS



AERIAL IMAGERY SOURCE: NEARMAP

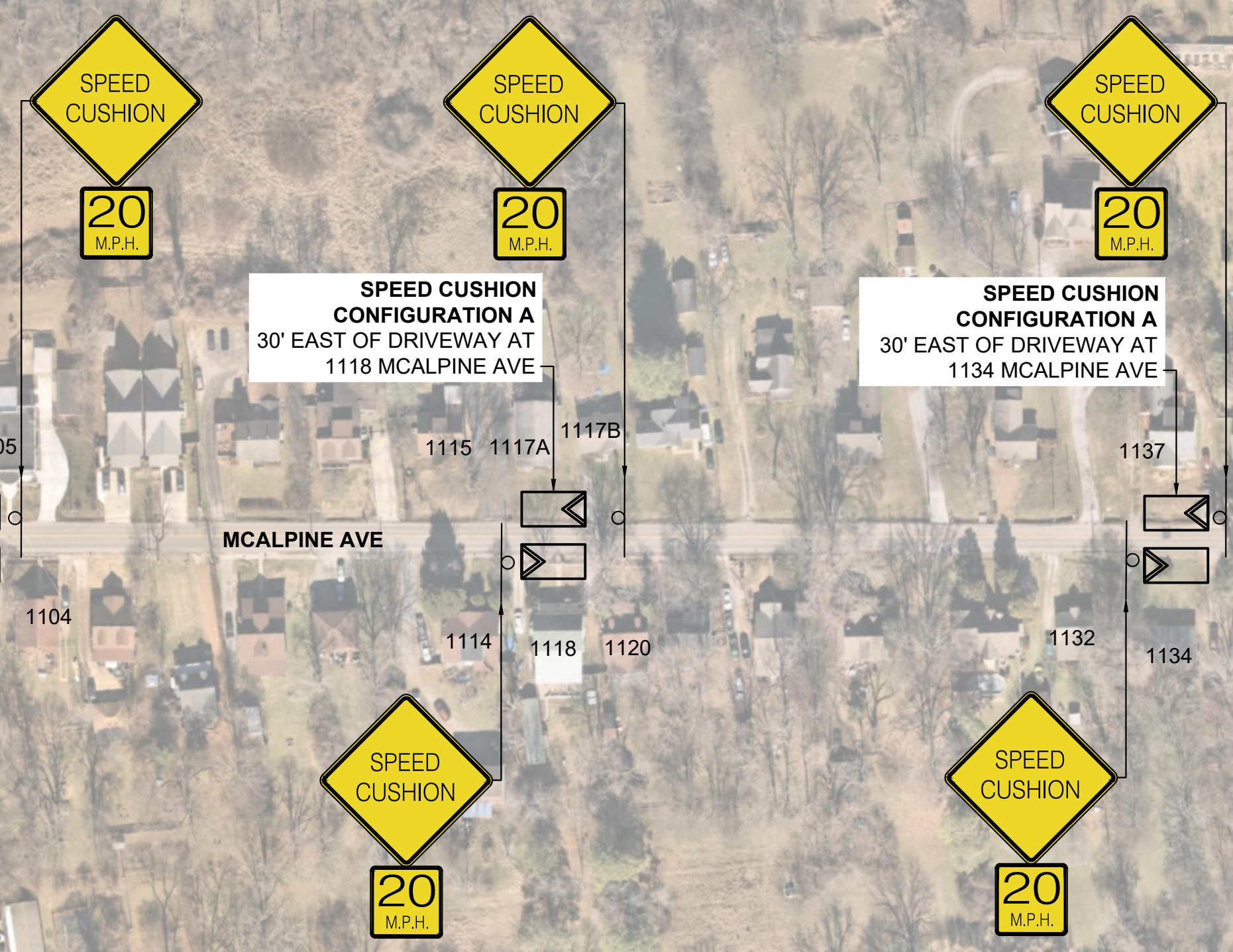


DESIGNED BY:	DHT
DRAWN BY:	JCB
CHECKED BY:	NDOT
DATE:	5/8/2024
KIMLEY-HORN PROJECT NO. 118900046	

KEY

SHEET NUMBER
01

SPEED CUSHIONS



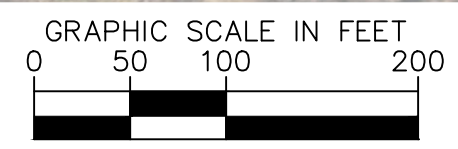
SPEED CUSHION CONFIGURATION A
25' EAST OF DRIVEWAY AT
1103 MCALPINE AVE

SPEED CUSHION CONFIGURATION A
30' EAST OF DRIVEWAY AT
1118 MCALPINE AVE

SPEED CUSHION CONFIGURATION A
30' EAST OF DRIVEWAY AT
1134 MCALPINE AVE

GALLATIN PK

MCALPINE AVE



AERIAL IMAGERY SOURCE: NEARMAP

NDOT

**MCALPINE AVENUE
TRAFFIC CALMING**
NASHVILLE, TN



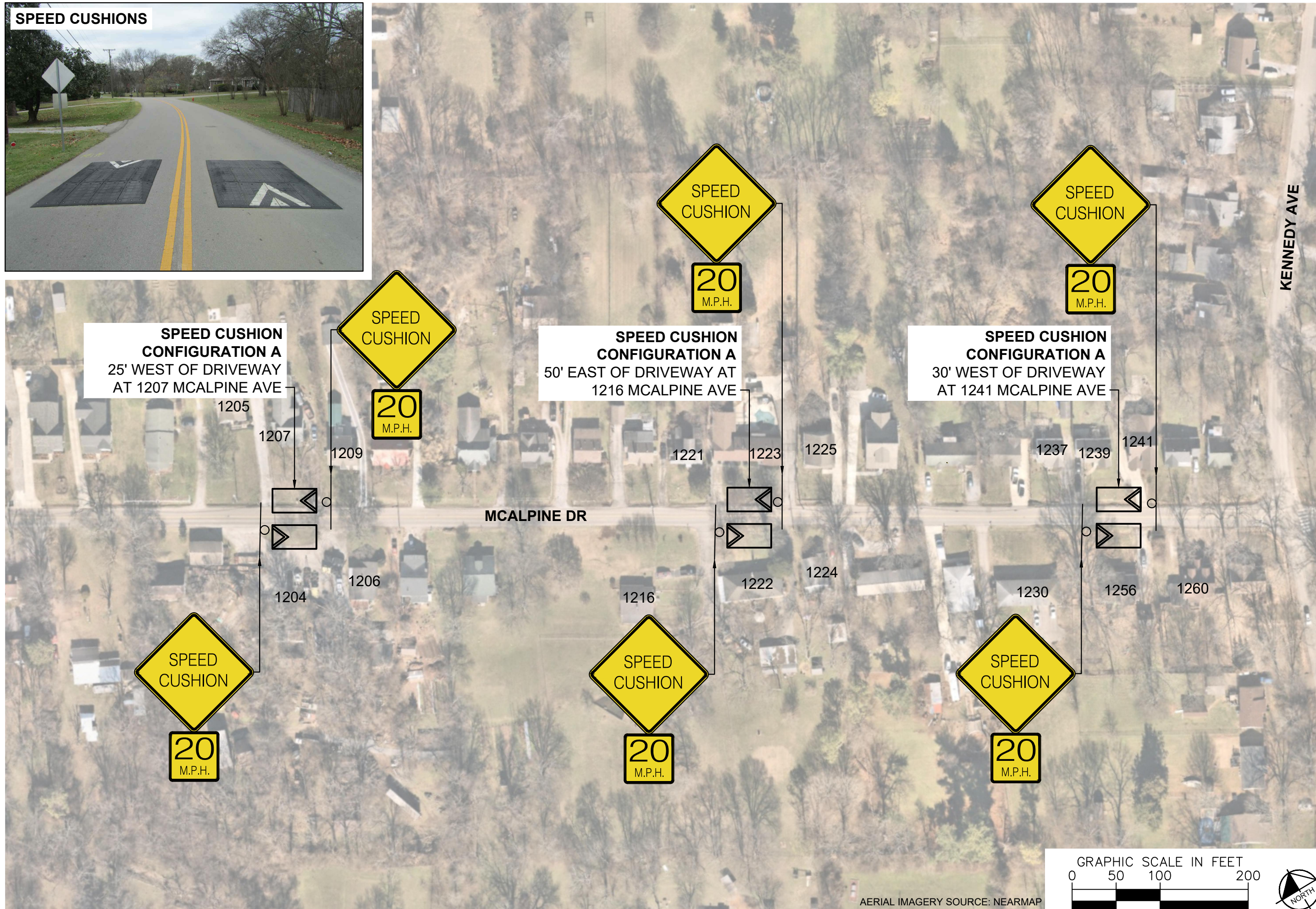
Kimley»Horn

DESIGNED BY:	DHT
DRAWN BY:	JCB
CHECKED BY:	NDOT
DATE:	5/8/2024
KIMLEY-HORN PROJECT NO. 118900046	

CONCEPT

SHEET NUMBER
02

SPEED CUSHIONS

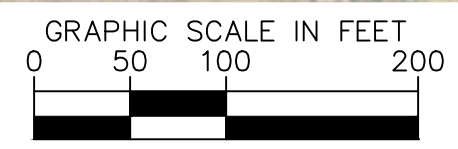


**MCALPINE AVENUE
TRAFFIC CALMING**
NASHVILLE, TN



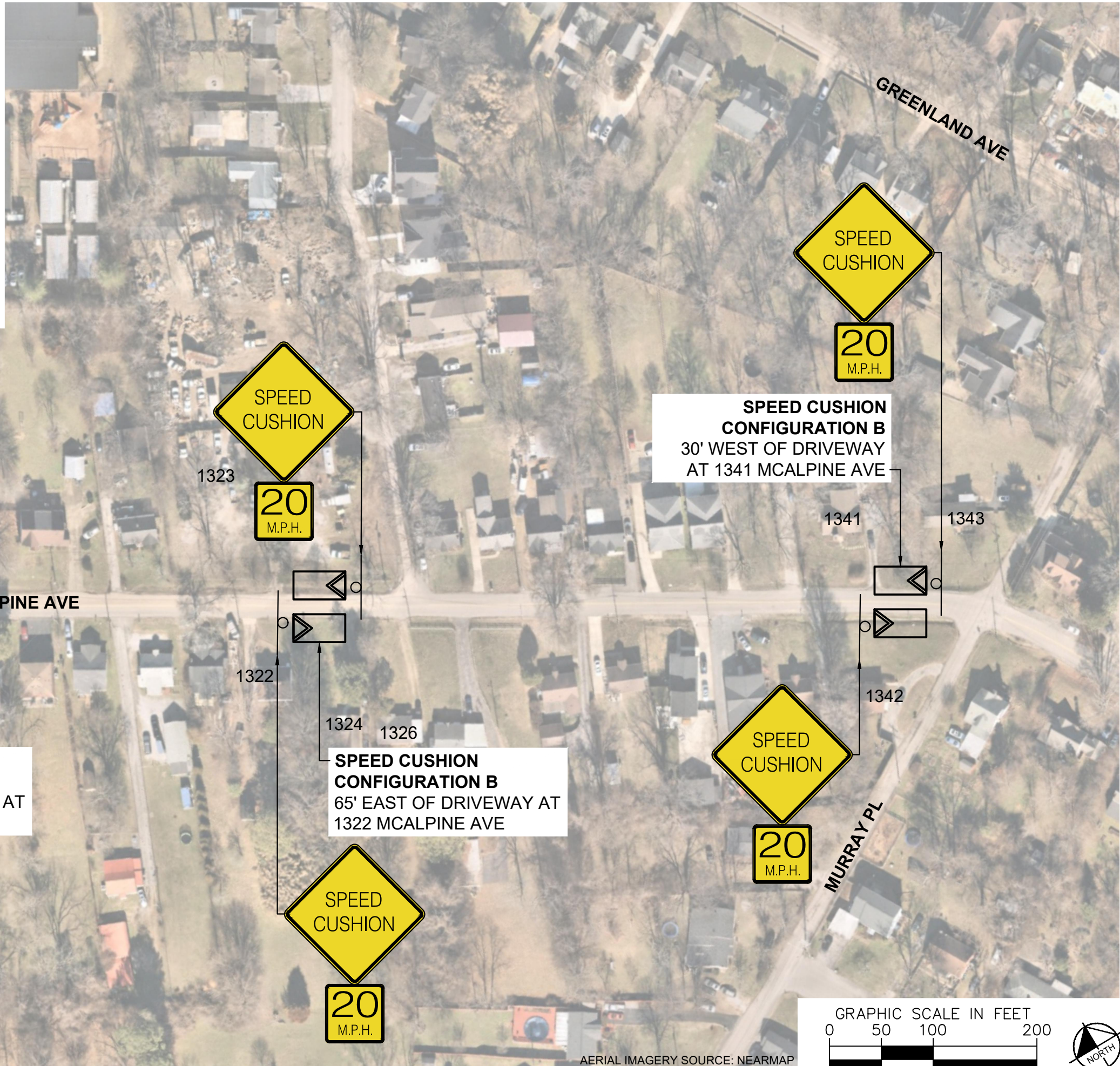
DESIGNED BY:	DHT
DRAWN BY:	JCB
CHECKED BY:	NDOT
DATE:	5/8/2024
KIMLEY-HORN PROJECT NO.:	118900046

CONCEPT
SHEET NUMBER
03



AERIAL IMAGERY SOURCE: NEARMAP

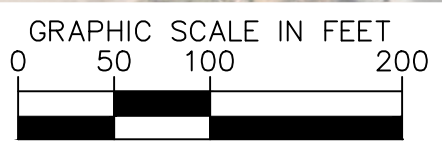
SPEED CUSHIONS



SPEED CUSHION CONFIGURATION B
30' EAST OF DRIVEWAY AT
1305 MCALPINE AVE

SPEED CUSHION CONFIGURATION B
65' EAST OF DRIVEWAY AT
1322 MCALPINE AVE

SPEED CUSHION CONFIGURATION B
30' WEST OF DRIVEWAY
AT 1341 MCALPINE AVE



AERIAL IMAGERY SOURCE: NEARMAP

This document, together with the concepts and designs presented herein, is intended only for the specific purpose and client for which it was prepared. Reuse of and improper reliance on this document without written authorization and adaptation by Kimley-Horn and Associates, Inc. shall be without liability to Kimley-Horn and Associates, Inc.



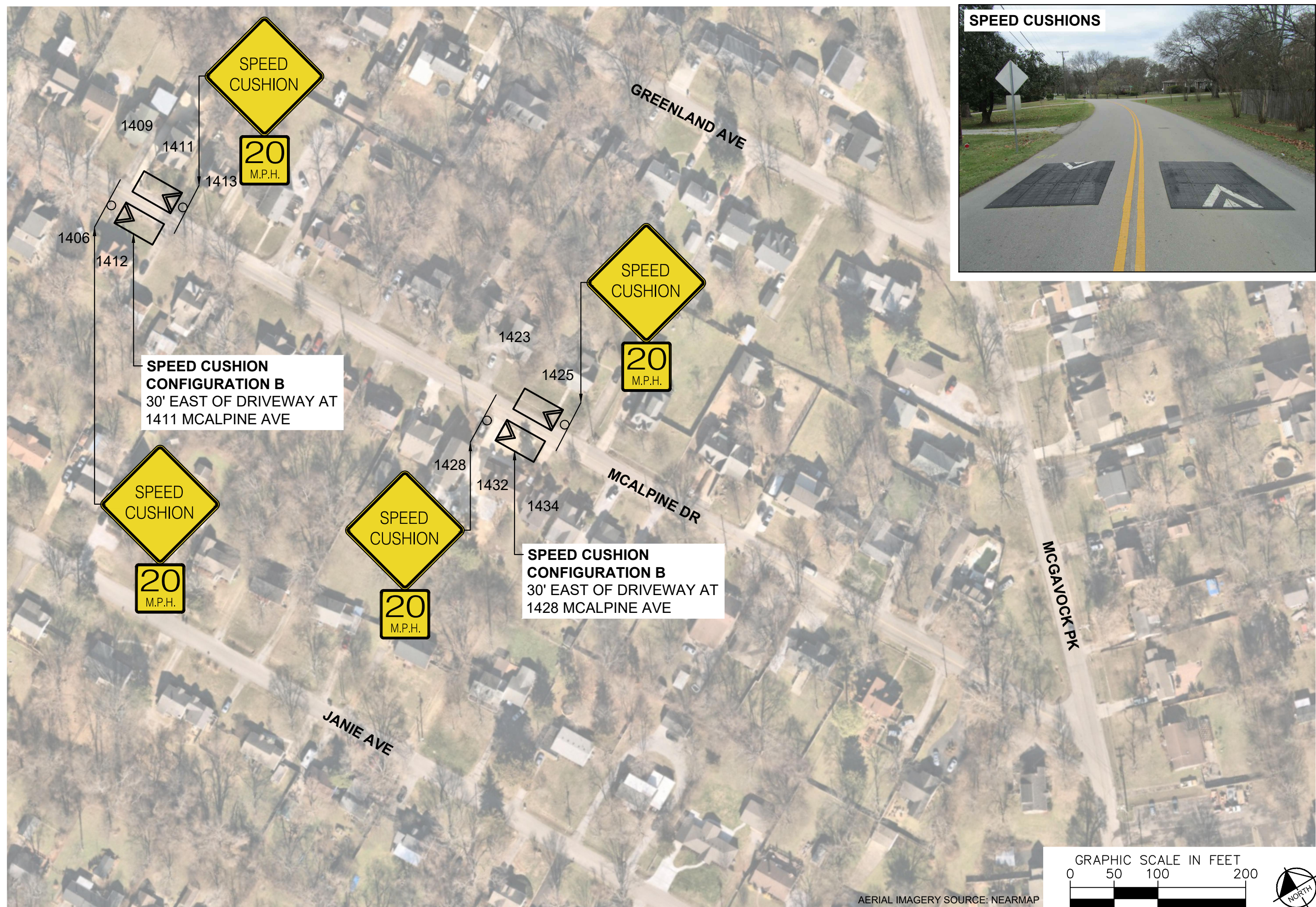
**MCALPINE AVENUE
TRAFFIC CALMING**
NASHVILLE, TN



DESIGNED BY:	DHT
DRAWN BY:	JCB
CHECKED BY:	NDOT
DATE:	5/6/2024
KIMLEY-HORN PROJECT NO.	118900046

CONCEPT
SHEET NUMBER
04

This document, together with the concepts and designs presented herein, is intended only for the specific purpose and client for which it was prepared. Reuse of and improper reliance on this document without written authorization and adaptation by Kimley-Horn and Associates, Inc. shall be without liability to Kimley-Horn and Associates, Inc.



SPEED CUSHIONS

NDOT

MCALPINE AVENUE
TRAFFIC CALMING
NASHVILLE, TN



Kimley»Horn

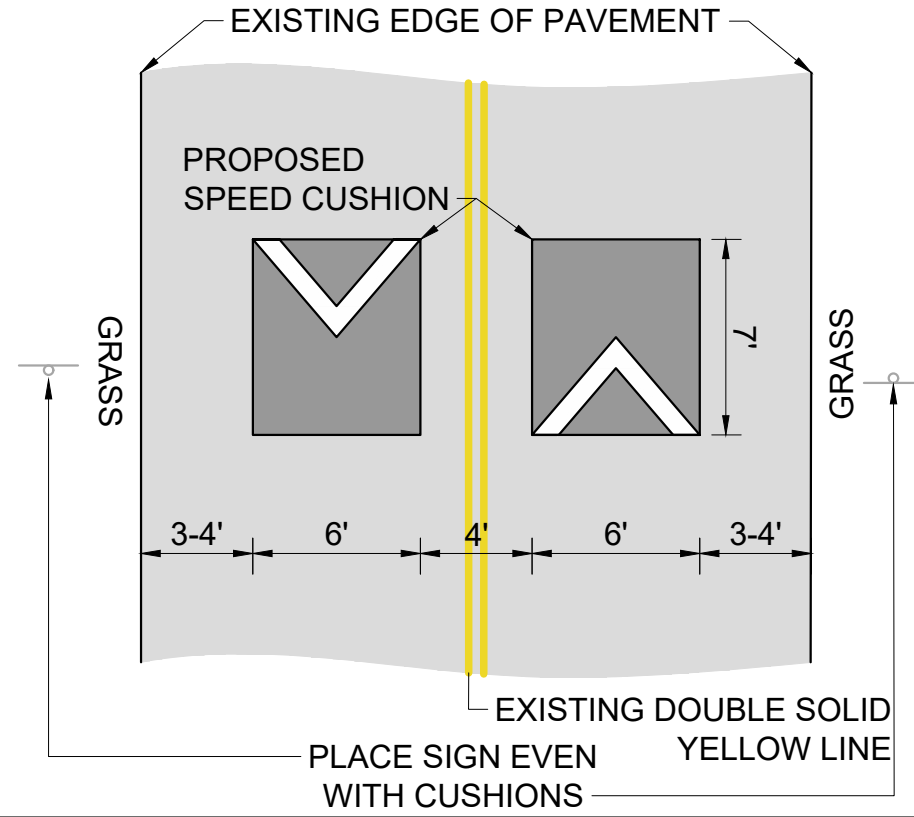
DESIGNED BY: DHT
DRAWN BY: JCB
CHECKED BY: NDOT
DATE: 5/8/2024
KIMLEY-HORN PROJECT NO. 118900046

CONCEPT
SHEET NUMBER
05

This document, together with the concepts and designs presented herein, as an instrument of service, is intended only for the specific purpose and client for which it was prepared. Reuse of and improper reliance on this document without written authorization and adaptation by Kimley-Horn and Associates, Inc. shall be without liability to Kimley-Horn and Associates, Inc.

CONFIGURATION A

22-24' OF PAVEMENT



NDOT

MCALPINE AVENUE
TRAFFIC CALMING
NASHVILLE, TN



Kimley»Horn

DESIGNED BY:	DHT
DRAWN BY:	JCB
CHECKED BY:	NDOT
DATE:	5/8/2024
KIMLEY-HORN PROJECT NO.	118800046

DETAIL

SHEET NUMBER
06