

ESTIMATED QUANTITIES

SPEED CUSHIONS

6' X 14' SPEED CUSHION WITH ONE ARROW	24
---------------------------------------	----

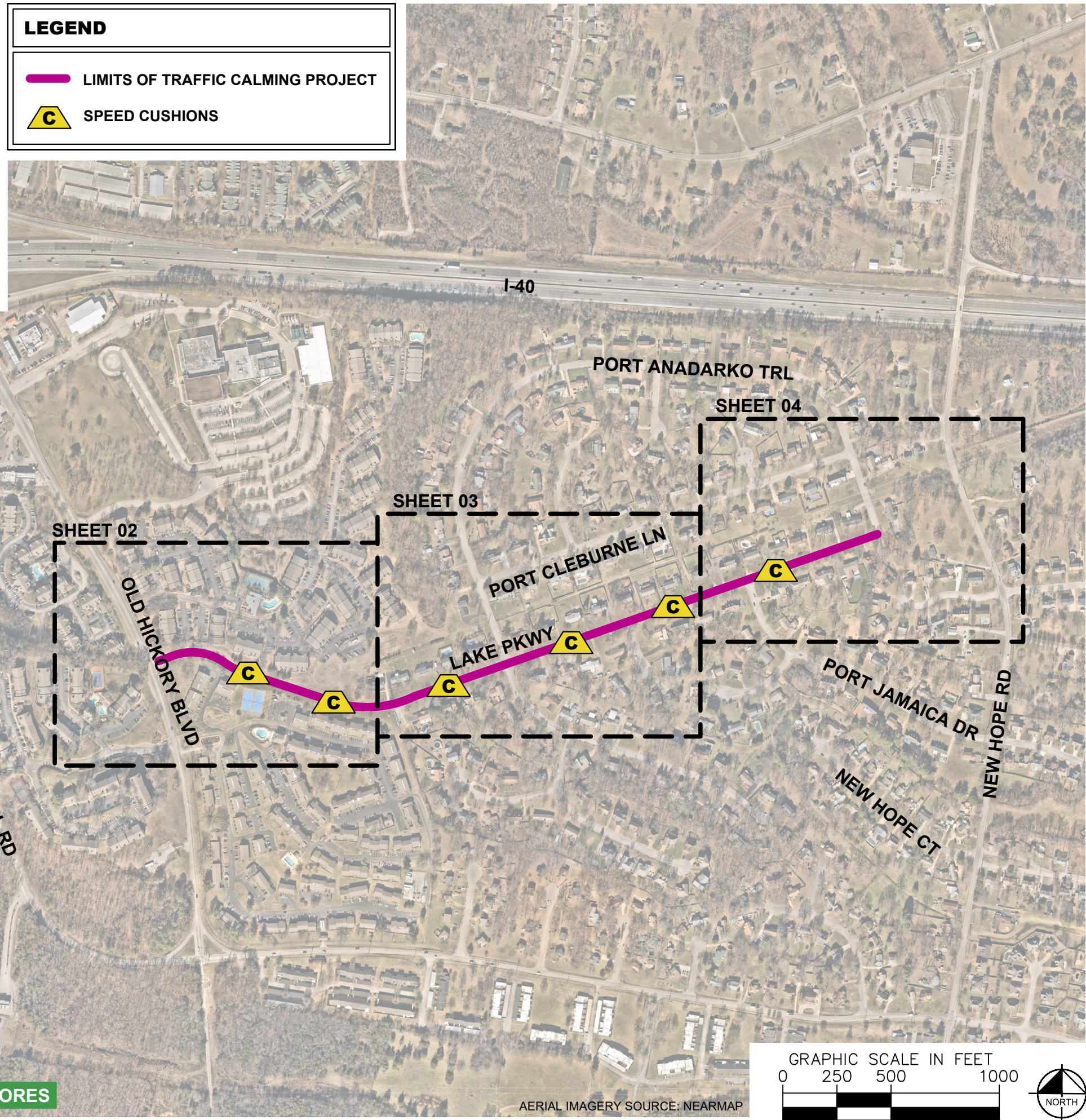
SIGNING

W17-1 (VAR.) "SPEED CUSHIONS AHEAD" SIGN (30" X 30")	5
W17-1 (VAR.) "SPEED CUSHIONS" SIGN (30" X 30")	1
W13-1P "20 M.P.H" SIGN (18" X 18")	6

NOTE: ALL LOCATIONS ARE REFERENCED FROM CENTERLINE OF DRIVEWAYS OR OTHER LANDMARKS TO THE CENTER OF SPEED CUSHIONS OR SIGNS.

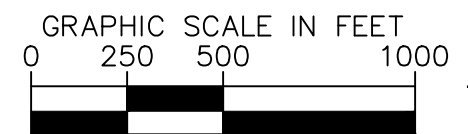
LEGEND

-  LIMITS OF TRAFFIC CALMING PROJECT
-  SPEED CUSHIONS



NASHVILLE SHORES

AERIAL IMAGERY SOURCE: NEARMAP



NDOT

LAKE PKWY
TRAFFIC CALMING
NASHVILLE, TN



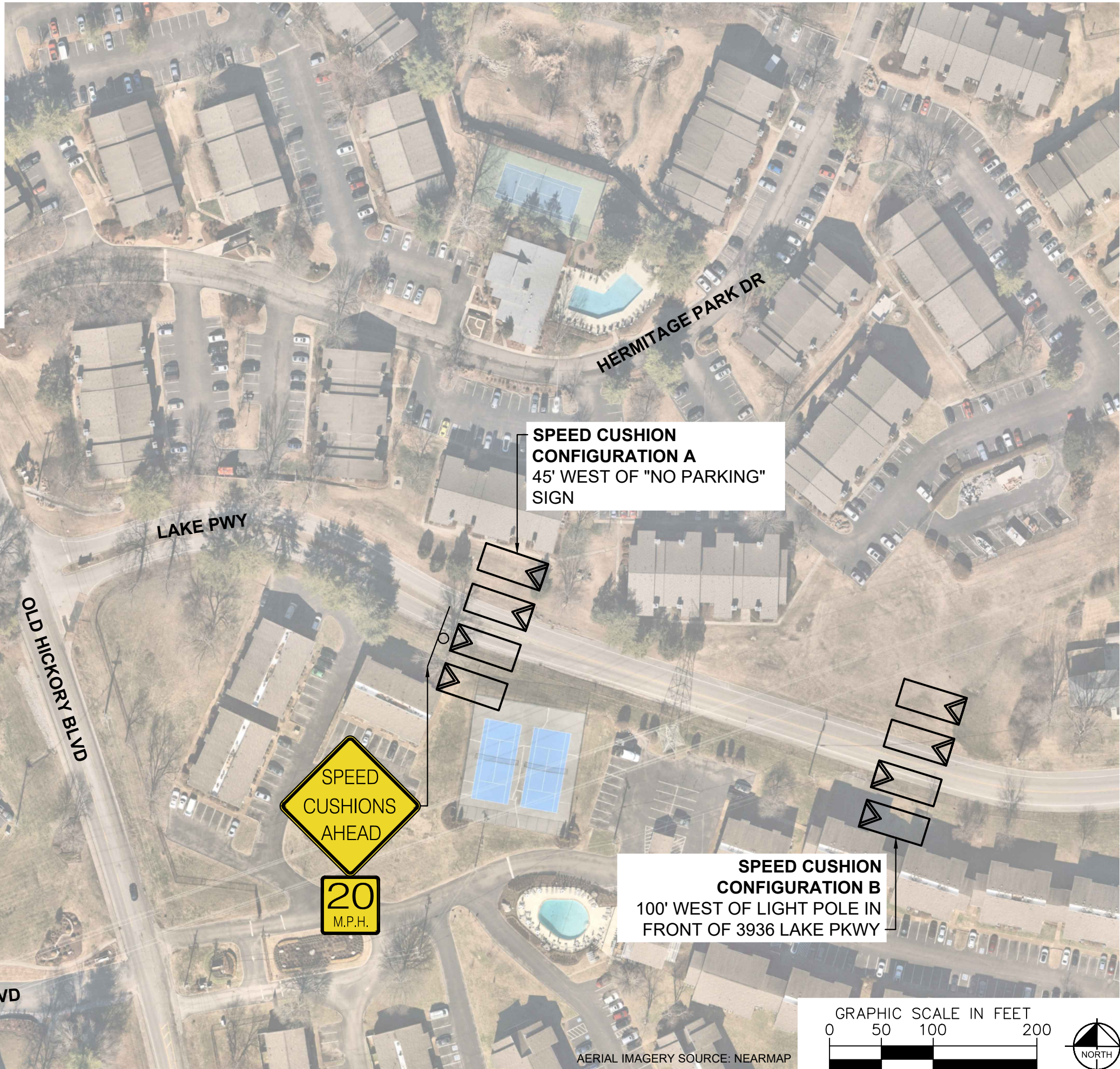
Kimley»Horn

DESIGNED BY: DHT
DRAWN BY: JCB
CHECKED BY: NDOT
DATE: 5/16/2024
KIMLEY-HORN PROJECT NO. 11890046

KEY
SHEET NUMBER
01

This document, together with the concepts and designs presented herein, is intended only for the specific purpose and client for which it was prepared. Reuse of and improper reliance on this document without written authorization and adaptation by Kimley-Horn and Associates, Inc. shall be without liability to Kimley-Horn and Associates, Inc.

SPEED CUSHIONS



SPEED CUSHION CONFIGURATION A
45' WEST OF "NO PARKING" SIGN

SPEED CUSHION CONFIGURATION B
100' WEST OF LIGHT POLE IN FRONT OF 3936 LAKE PKWY



AERIAL IMAGERY SOURCE: NEARMAP

This document, together with the concepts and designs presented herein, is intended only for the specific purpose and client for which it was prepared. Reuse of and improper reliance on this document without written authorization and adaptation by Kimley-Horn and Associates, Inc. shall be without liability to Kimley-Horn and Associates, Inc.



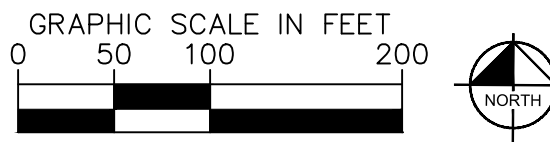
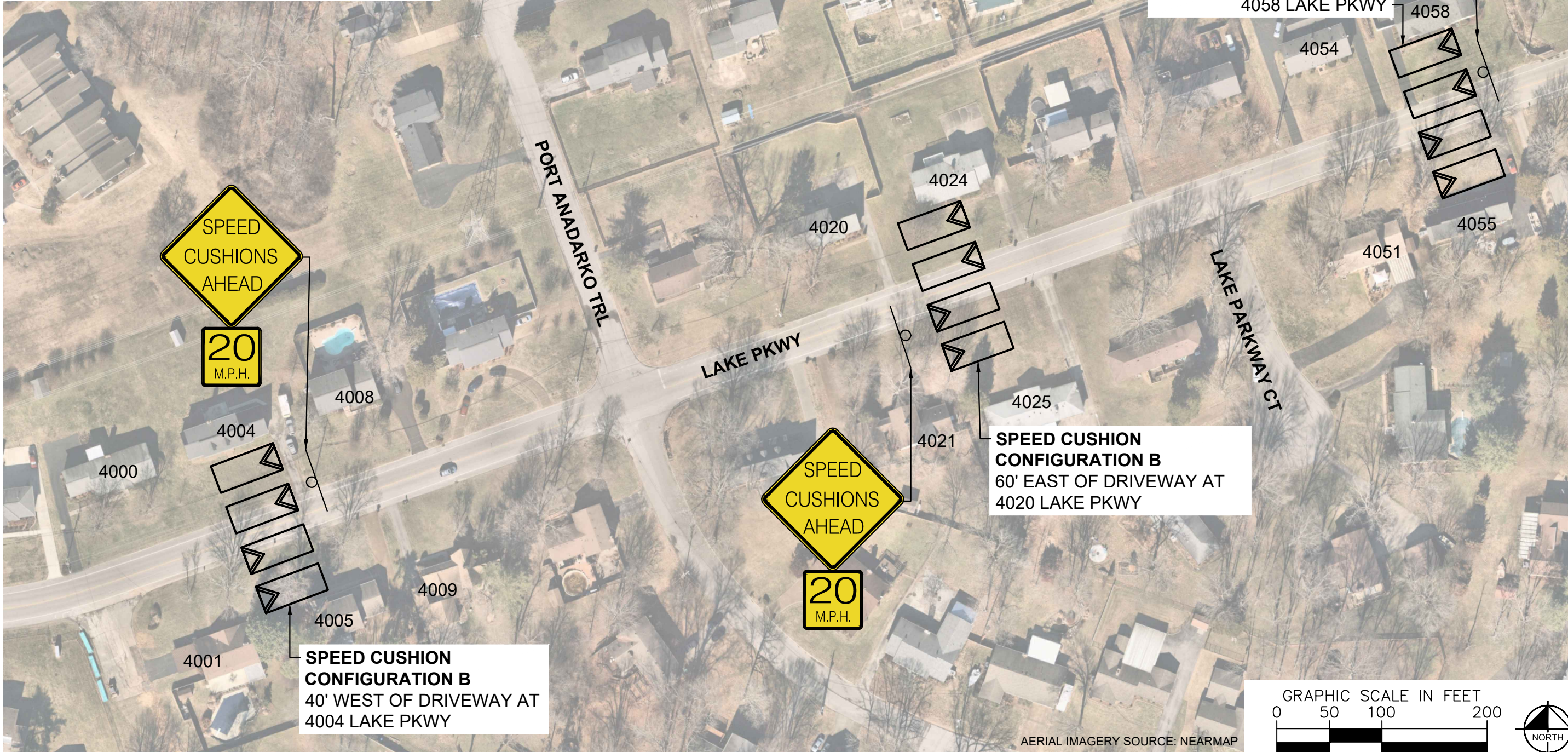
LAKE PKWY
TRAFFIC CALMING
NASHVILLE, TN



DESIGNED BY:	DHT
DRAWN BY:	JCB
CHECKED BY:	NDOT
DATE:	5/16/2024
KIMLEY-HORN PROJECT NO. 118900046	

CONCEPT
SHEET NUMBER
02

SPEED CUSHIONS



AERIAL IMAGERY SOURCE: NEARMAP

NDOT

LAKE PKWY
TRAFFIC CALMING
NASHVILLE, TN



Kimley»Horn

DESIGNED BY:	DHT
DRAWN BY:	JCB
CHECKED BY:	NDOT
DATE:	5/16/2024
KIMLEY-HORN PROJECT NO. 118900046	

CONCEPT
SHEET NUMBER
03

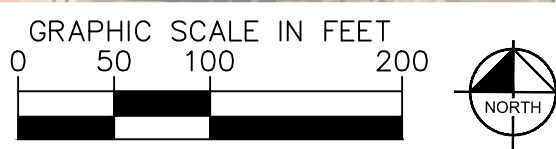
SPEED CUSHIONS



SPEED CUSHION CONFIGURATION B
30' EAST OF DRIVEWAY AT
4071 LAKE PKWY

SPEED CUSHION
20
M.P.H.

SPEED CUSHIONS AHEAD
20
M.P.H.



AERIAL IMAGERY SOURCE: NEARMAP



LAKE PKWY
TRAFFIC CALMING
NASHVILLE, TN



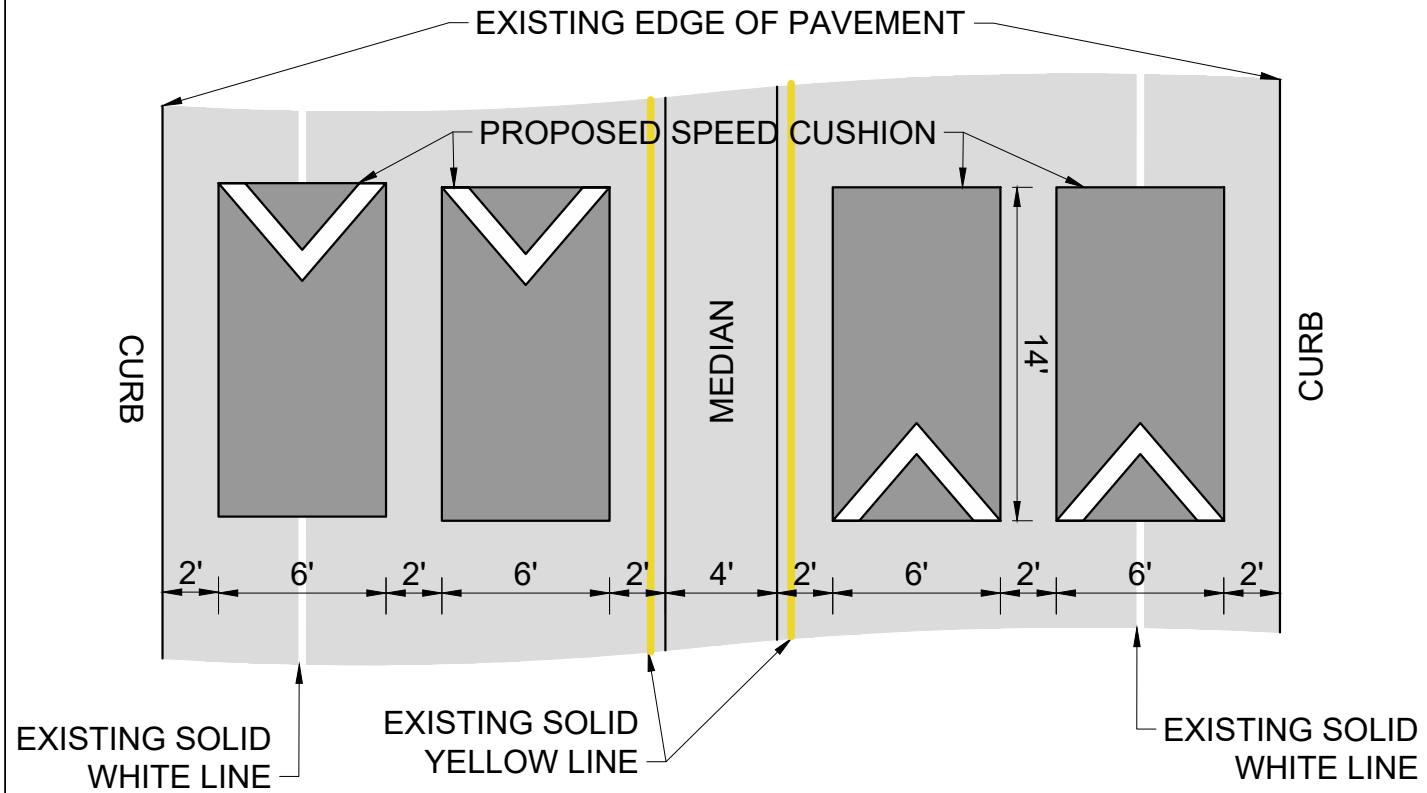
DESIGNED BY:	DHT
DRAWN BY:	JCB
CHECKED BY:	NDOT
DATE:	5/16/2024
KIMLEY-HORN PROJECT NO. 11890046	

CONCEPT
SHEET NUMBER
04

This document, together with the concepts and designs presented herein, as an instrument of service, is intended only for the specific purpose and client for which it was prepared. Reuse of and improper reliance on this document without written authorization and adaptation by Kimley-Horn and Associates, Inc. shall be without liability to Kimley-Horn and Associates, Inc.

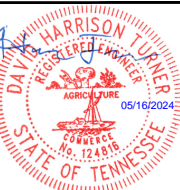
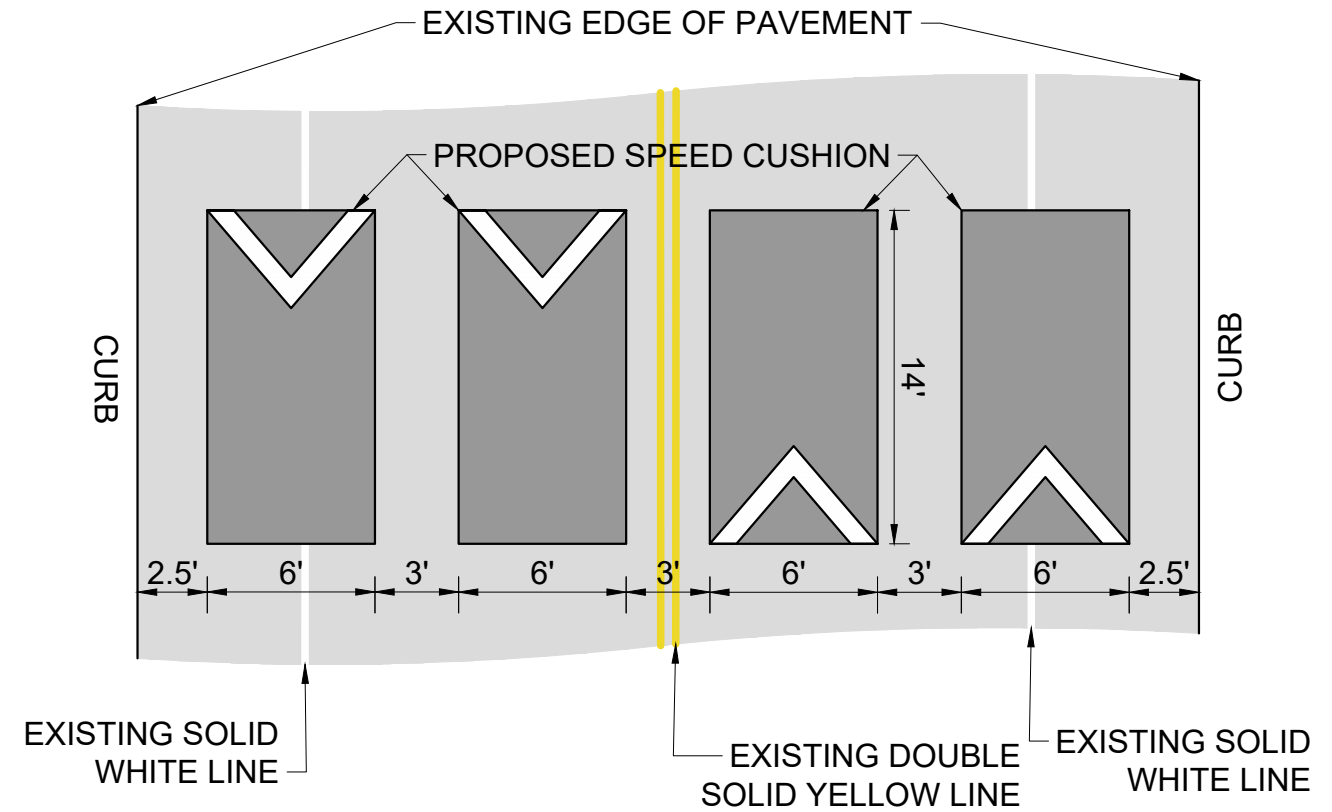
CONFIGURATION A

40' OF PAVEMENT



CONFIGURATION B

38' OF PAVEMENT



DESIGNED BY:	DHT
DRAWN BY:	JCB
CHECKED BY:	NDOT
DATE:	5/16/2024
KIMLEY-HORN PROJECT NO.	118800046

DETAIL

SHEET NUMBER
05