

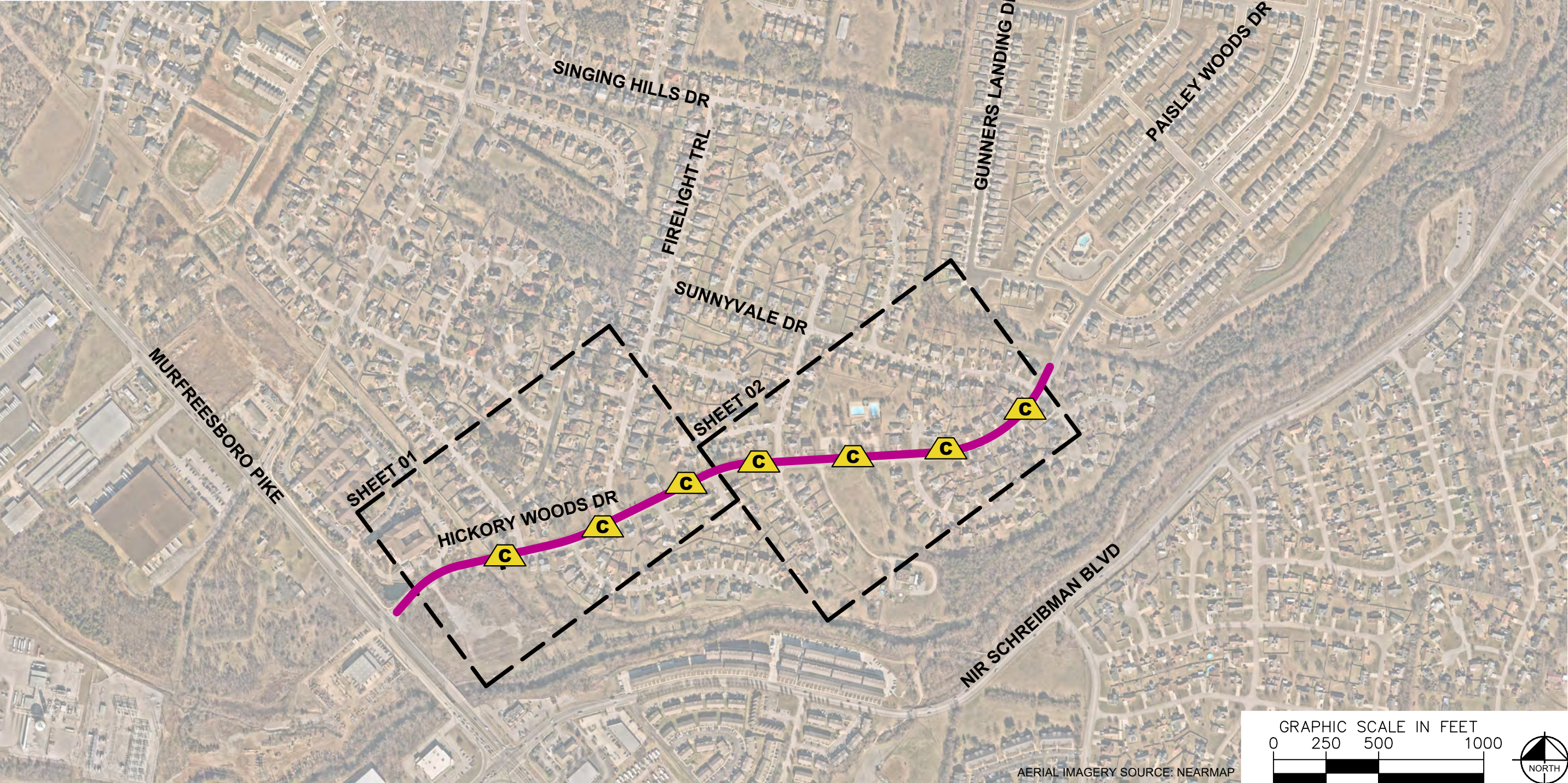



This document, together with the concepts and designs presented herein, is intended only for the specific purposes and client for which it was prepared. Reuse of and improper reliance on this document without written authorization and adaptation by Kimley-Horn and Associates, Inc. shall be without liability to Kimley-Horn and Associates, Inc.



ESTIMATED QUANTITIES	
SPEED CUSHIONS	
6' X 14' SPEED CUSHION WITH ONE ARROW	28
SIGNING	
W17-1 (VAR.) "SPEED CUSHION" SIGN (30" X 30")	4
W17-1 (VAR.) "SPEED CUSHIONS AHEAD" SIGN (30" X 30")	4
W13-1P "20 M.P.H" SIGN (18" X 18")	8
NOTE: ALL LOCATIONS ARE REFERENCED FROM CENTERLINE OF DRIVEWAYS OR OTHER LANDMARKS TO THE CENTER OF SPEED CUSHIONS OR SIGNS.	

LEGEND	
	LIMITS OF TRAFFIC CALMING PROJECT
	SPEED CUSHIONS





HICKORY WOODS DRIVE
TRAFFIC CALMING
NASHVILLE, TN



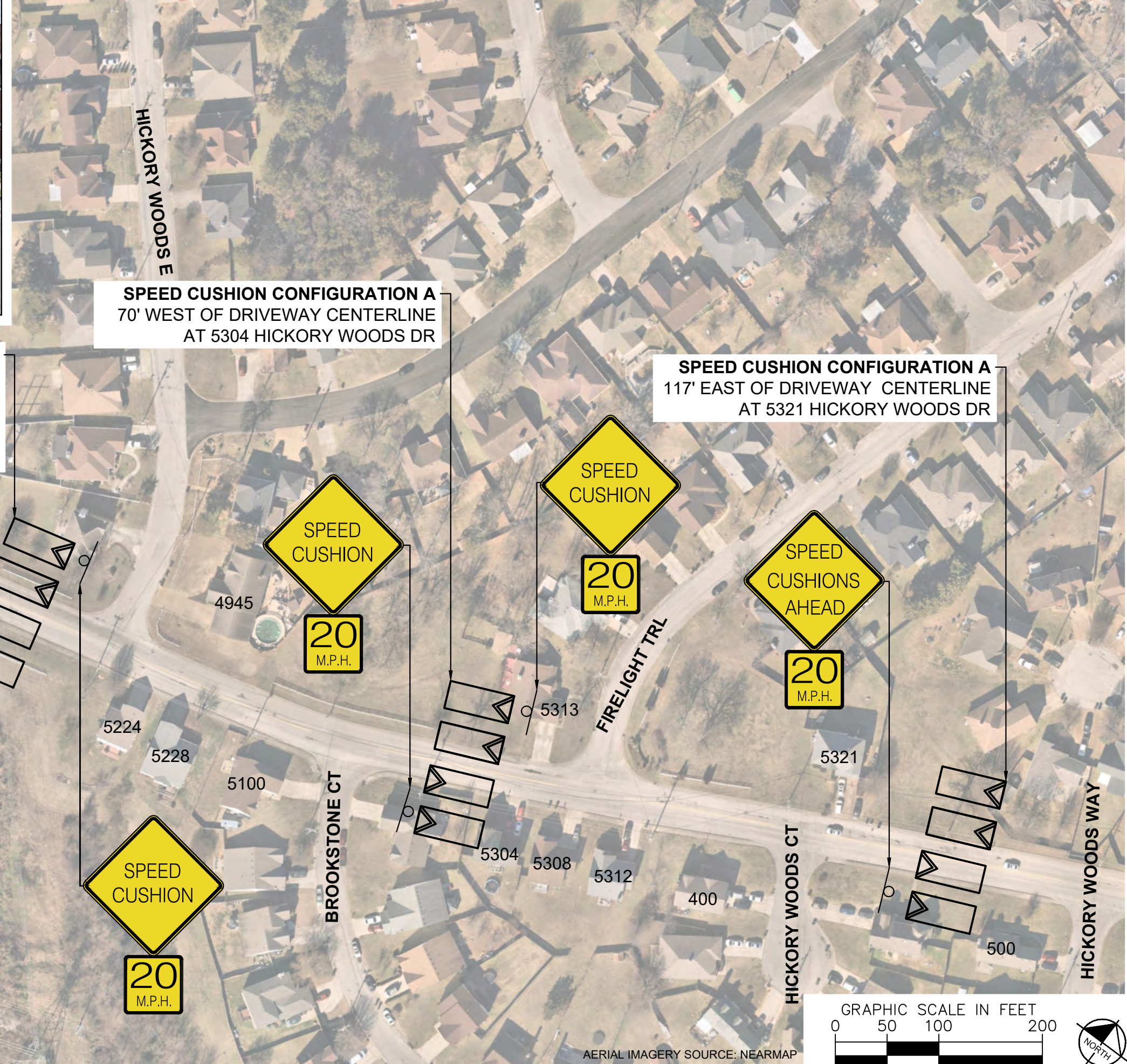
DESIGNED BY:	ALB
DRAWN BY:	KMZ
CHECKED BY:	NDOT
DATE:	8/30/2025
KIMLEY-HORN PROJECT NO.	118900051

KEY

SHEET NUMBER

01

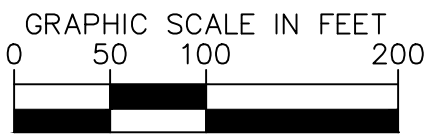
SPEED CUSHIONS



**SPEED CUSHION
CONFIGURATION A**
30' EAST OF THE END OF
THE SIDEWALK ON THE
NORTH SIDE OF HICKORY
WOODS DR

SPEED CUSHION CONFIGURATION A
70' WEST OF DRIVEWAY CENTERLINE
AT 5304 HICKORY WOODS DR

SPEED CUSHION CONFIGURATION A
117' EAST OF DRIVEWAY CENTERLINE
AT 5321 HICKORY WOODS DR



HICKORY WOODS DRIVE
TRAFFIC CALMING
NASHVILLE, TN

DESIGNED BY:	ALB
DRAWN BY:	KMZ
CHECKED BY:	NDOT
DATE:	8/30/2025
KIMLEY-HORN PROJECT NO. 118900051	

CONCEPT

SHEET NUMBER
02

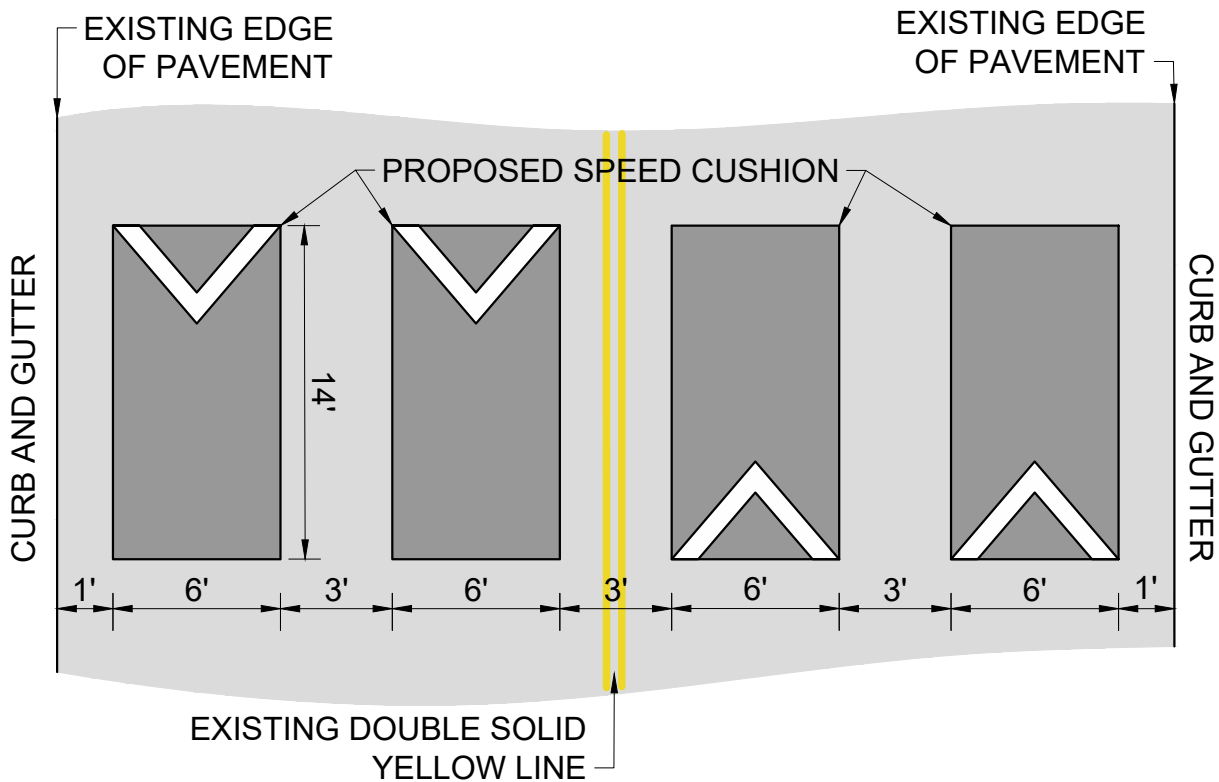
This document, together with the concepts and designs presented herein, is intended only for the specific purpose and client for which it was prepared. Reuse of and improper reliance on this document without written authorization and adaptation by Kimley-Horn and Associates, Inc. shall be without liability to Kimley-Horn and Associates, Inc.



This document, together with the concepts and designs presented herein, is intended only for the specific purpose and client for which it was prepared. Reuse of and improper reliance on this document without written authorization and adaptation by Kimley-Horn and Associates, Inc. shall be without liability to Kimley-Horn and Associates, Inc.

CONFIGURATION A

PAVEMENT WIDTH: 35'



HICKORY WOODS DRIVE
TRAFFIC CALMING
NASHVILLE, TN



DESIGNED BY:	ALB
DRAWN BY:	KMZ
CHECKED BY:	NDOT
DATE:	8/30/2025
KIMLEY-HORN PROJECT NO. 118900051	

DETAIL

SHEET NUMBER
04