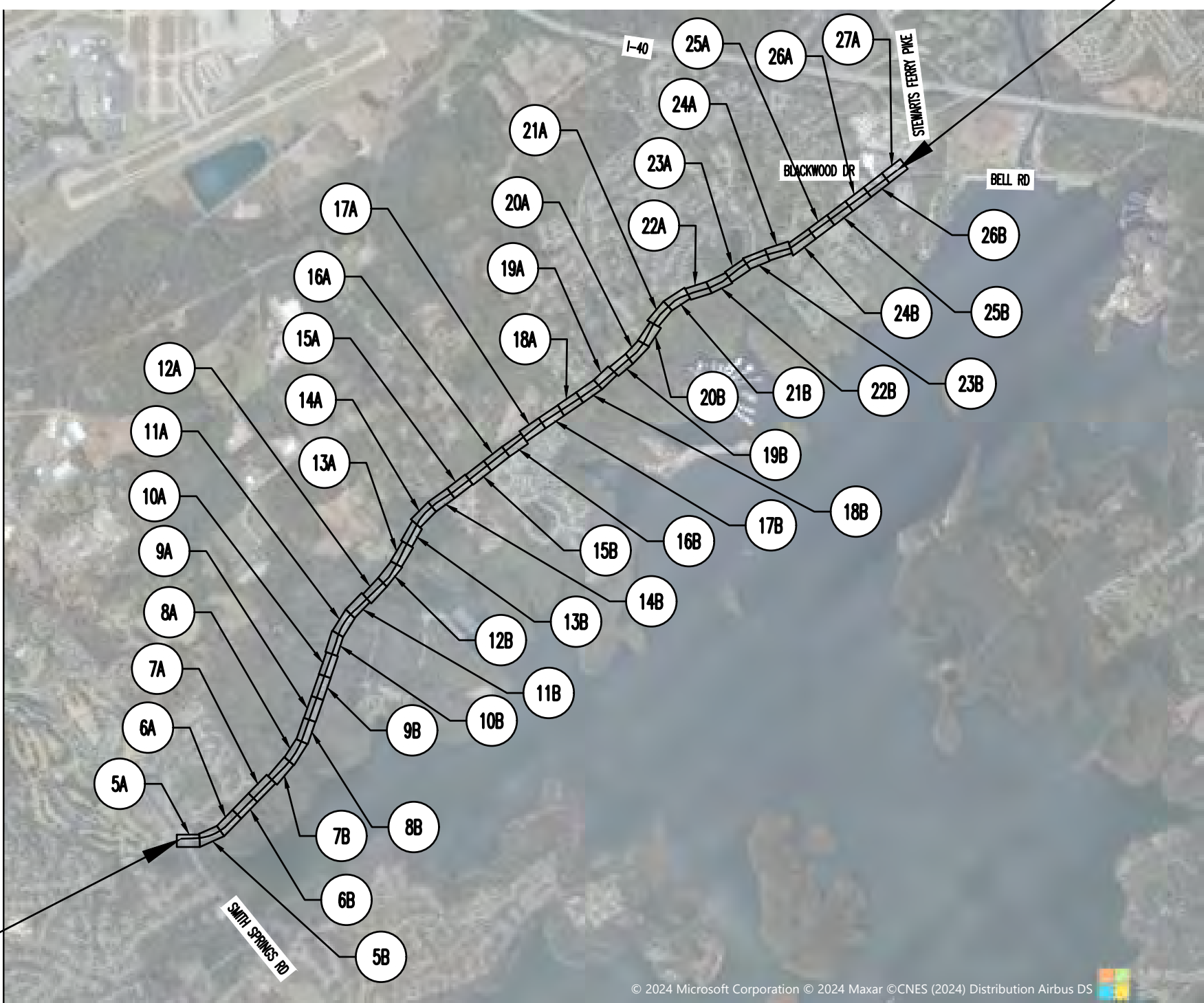
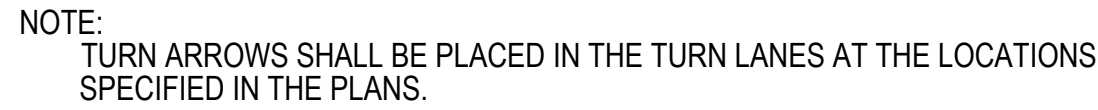


METROPOLITAN GOVERNMENT OF NASHVILLE AND DAVIDSON COUNTY, TENNESSEE

BELL ROAD BIKEWAY AND ROADWAY IMPROVEMENTS FROM SMITH SPRINGS ROAD TO BLACKWOOD DRIVE (APPROX. 4.42 L.M.) APRIL 2025





TURN LANE ARROW DETAIL

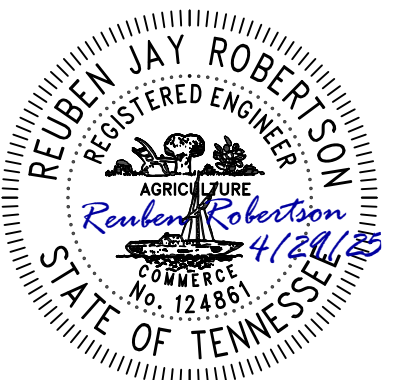
NOT TO SCALE

HEIGHT AND LATERAL LOCATION OF SIGNS - TYPICAL INSTALLATIONS

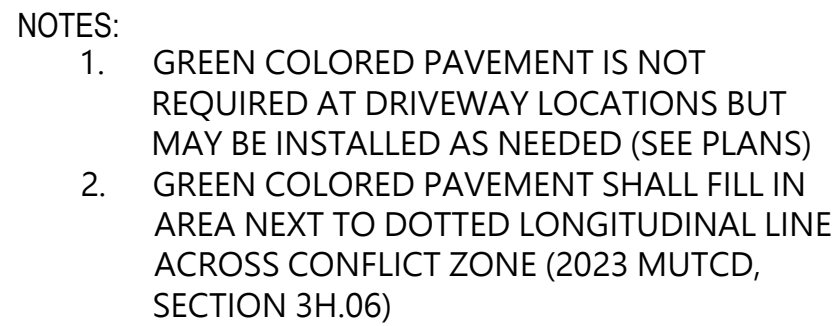
NOT TO SCALE

BIKE CONFLICT LINE (BCL) AT INTERSECTIONS

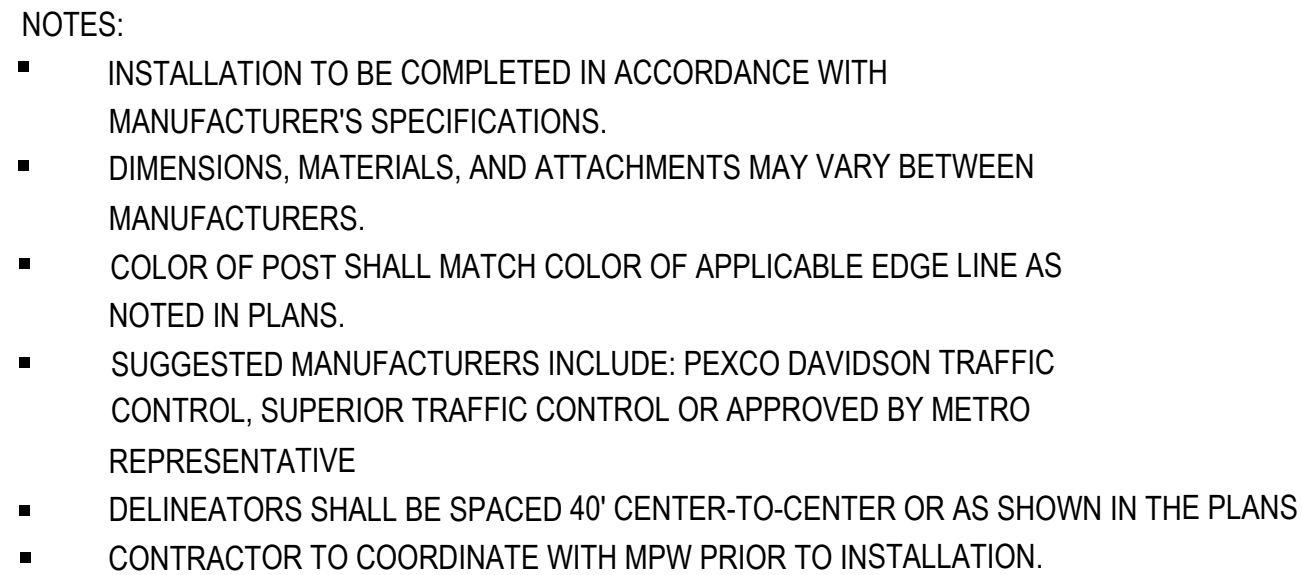
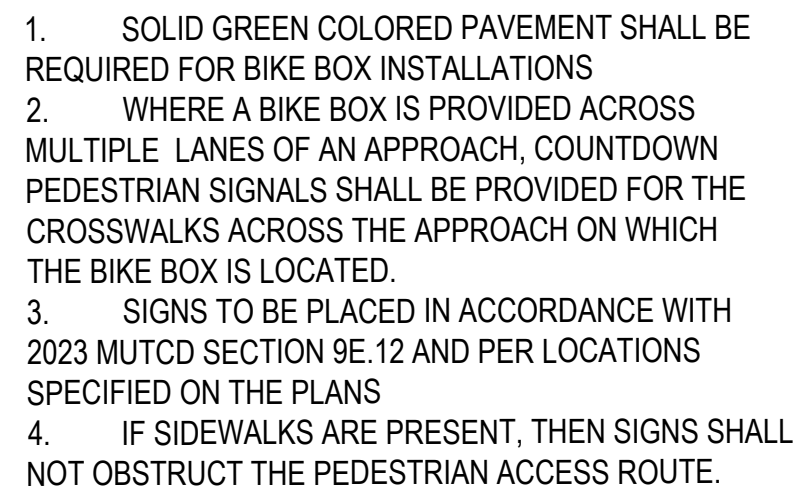
**METROPOLITAN GOVERNMENT OF NASHVILLE
AND DAVIDSON COUNTY, TENNESSEE
BELL ROAD BIKEWAY AND ROADWAY IMPROVEMENTS
FROM SMITH SPRINGS ROAD TO BLACKWOOD DRIVE**



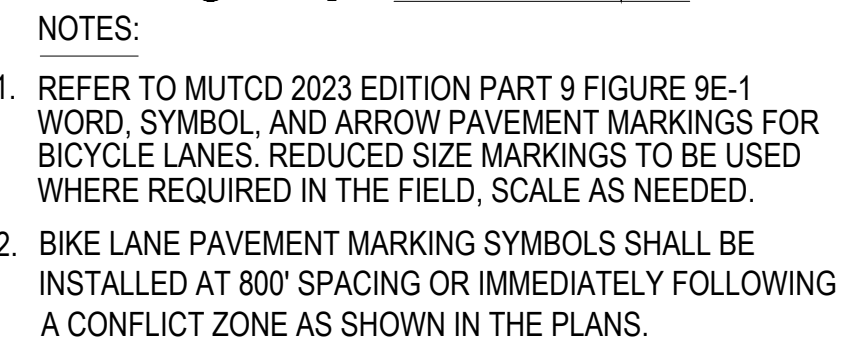
TYPICAL DETAILS



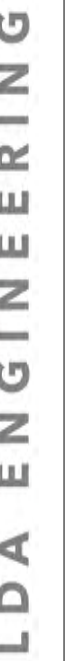
NOT TO SCALE



NOT TO SCALE

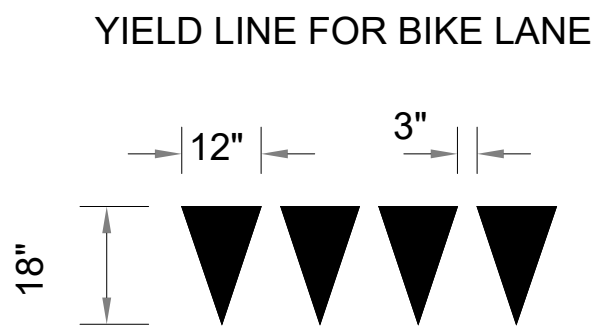
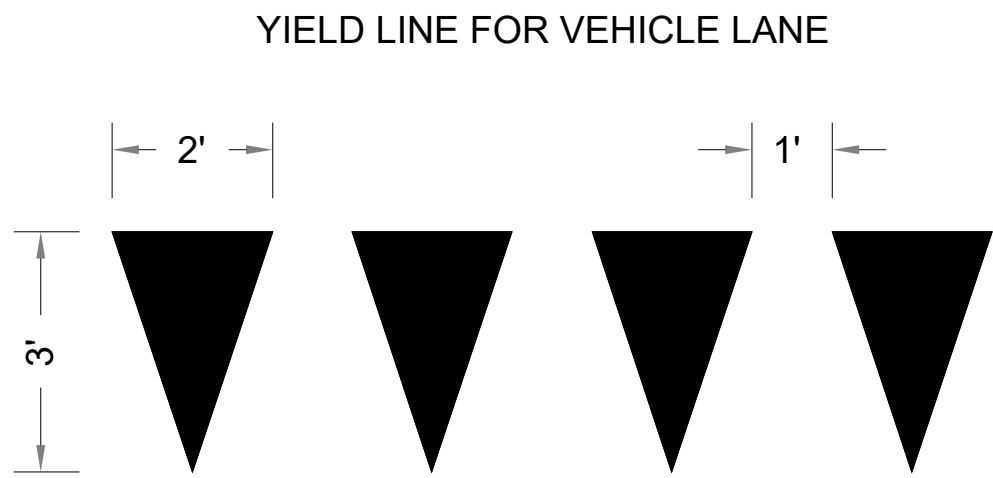


NOT TO SCALE



01	04/2025	NOT REWISED TO REFLECT ENTIRE CONCORD
REV		REVISION DESCRIPTION

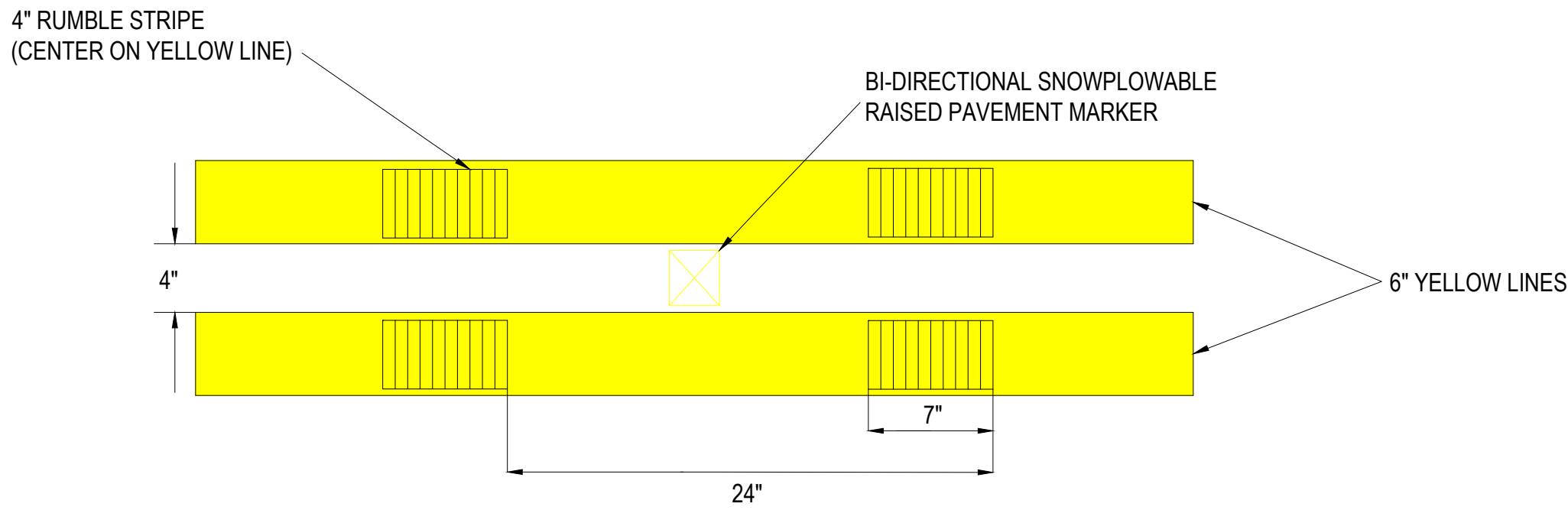
SHEET 3 OF 27



NOTE:
REFER TO MUTCD 2023 EDITION
SECTION 3B.19 AND FIGURE 3B-16. FOR
RECOMMENDED YIELD LINE LAYOUTS.
ALSO SEE TDOT T-M-4A, SHEET 4

YIELD LINE DETAIL

NOT TO SCALE



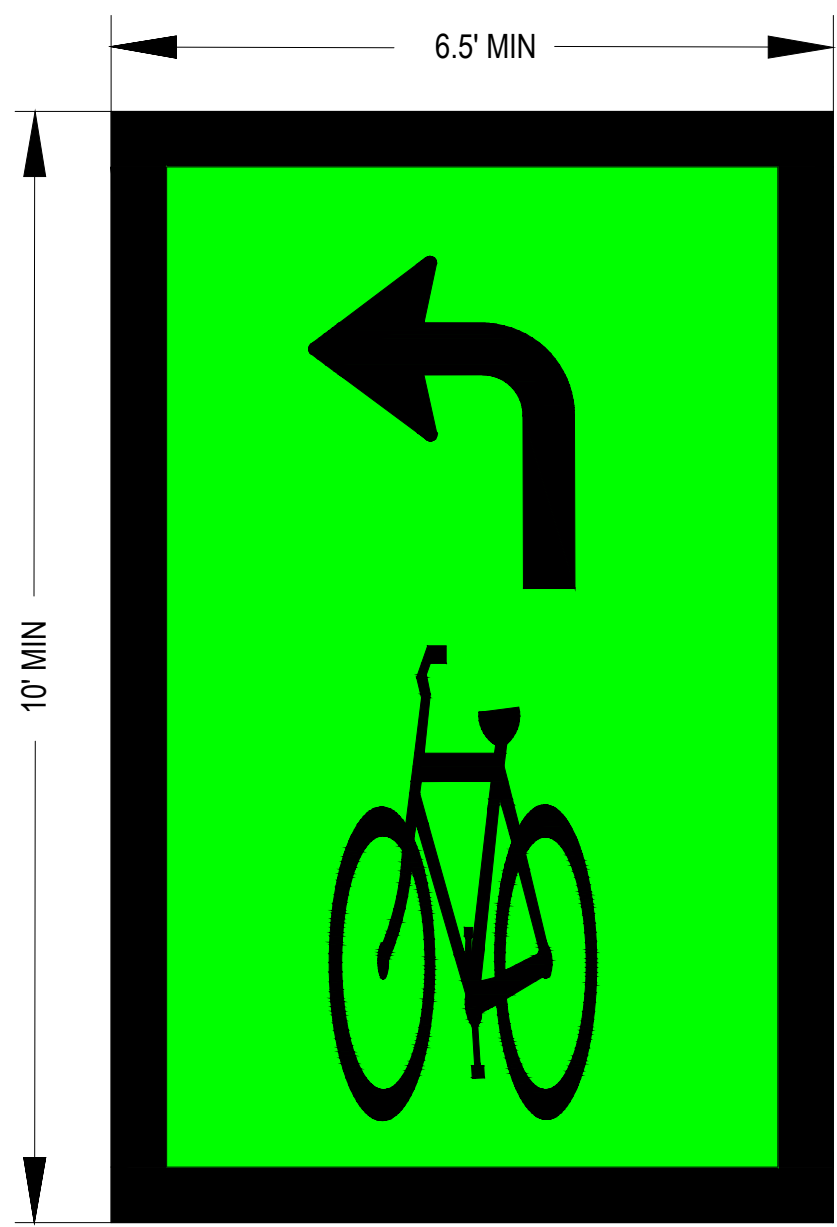
RUMBLE STRIP DETAIL

NOT TO SCALE

RUMBLE STRIP INSTALLATION LOCATIONS

SEGMENT	FROM	TO
1	STA 17+30	STA 61+05
2	STA 69+50	STA 79+90
3	STA 85+50	STA 102+30
4	STA 133+25	STA 140+30
5	STA 141+50	STA 146+80
6	STA 147+20	STA 151+80
7	STA 152+40	STA 153+60
8	STA 173+80	STA 186+00

- NOTES:
- RUMBLE STRIPE SHALL HAVE A DEPTH OF 7/16".
 - RAISED PAVEMENT MARKERS SHALL BE SPACED 80' CENTER TO CENTER UNLESS SPECIFIED OTHERWISE ON THE PLANS.

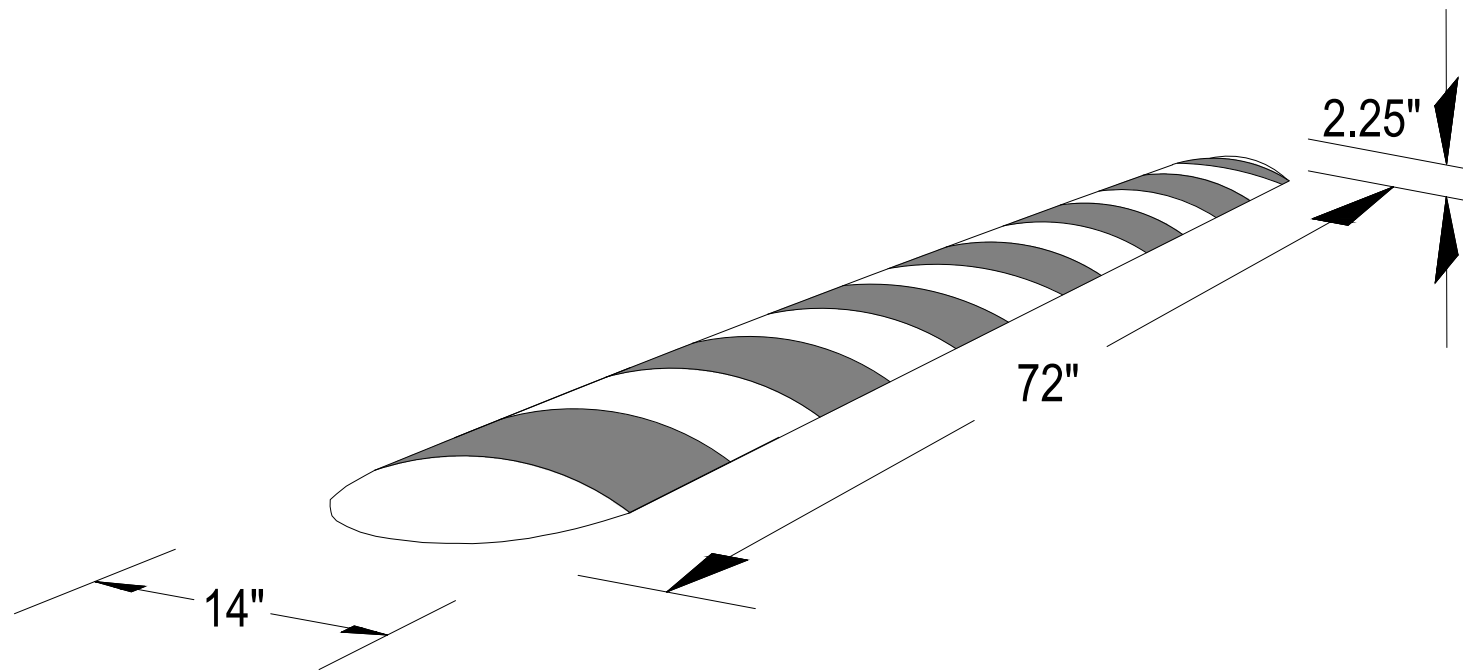


TWO STAGE TURN QUEUE DETAIL

NOT TO SCALE

NOTES:

- INSTALLATION SHALL BE COMPLETED IN ACCORDANCE WITH MANUFACTURER'S SPECIFICATIONS (TREETOP PRODUCTS SKU 3ZB3035-BK OR SIMILAR).
- SPEED BUMPS SHALL BE INSTALLED AT 45-DEGREE ANGLE TOWARD DIRECTION OF TRAVEL AS SHOWN IN THE PLANS.
- SPEED BUMPS SHALL BE INSTALLED FLUSH TO THE GROUND WITH HARDWARE HOLES ON EITHER SIDE OF THE SPEED BUMP.



SPEED BUMP DETAIL

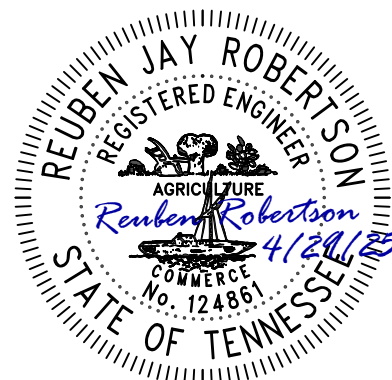
NOT TO SCALE



LDA ENGINEERING

REV	DATE	REVISION DESCRIPTION
01	04/2025	PROPOSED PLAN NOT REVIEWED TO REFLECT PROJECT CHANGES

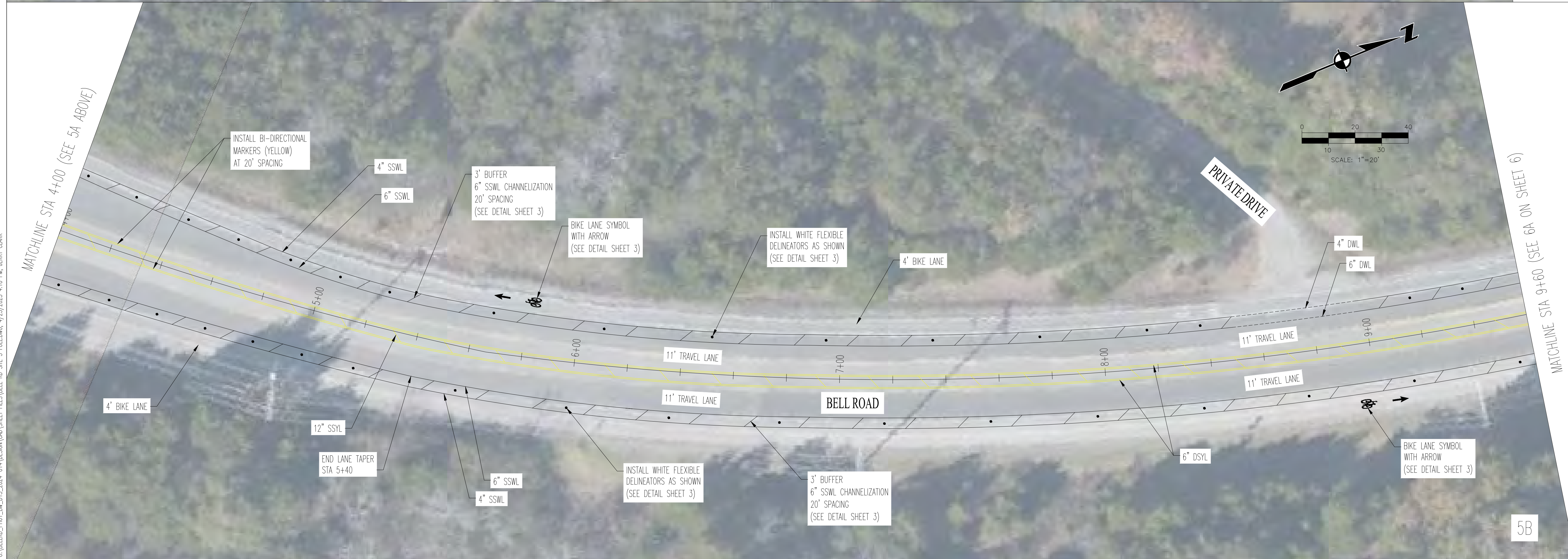
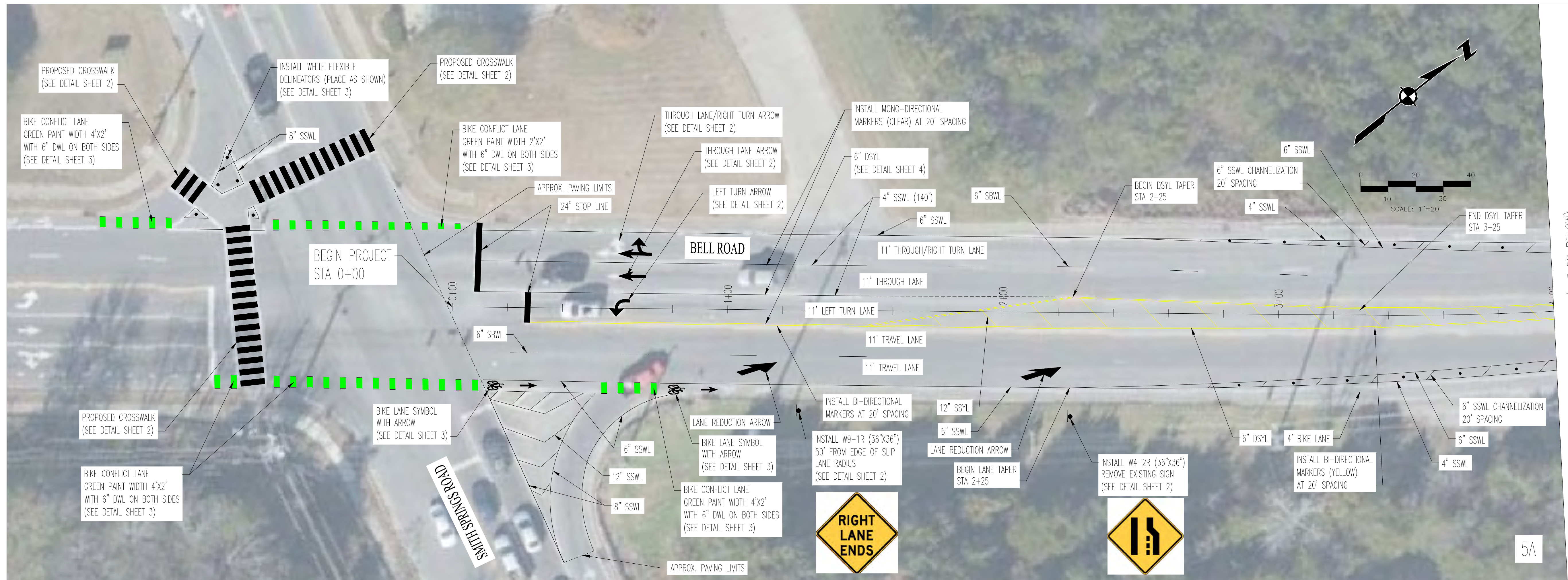
METROPOLITAN GOVERNMENT OF NASHVILLE
AND DAVIDSON COUNTY, TENNESSEE
BELL ROAD BIKEWAY AND ROADWAY IMPROVEMENTS
FROM SMITH SPRINGS ROAD TO BLACKWOOD DRIVE



PROJECT NUMBER:	NDT420
DATE: 4-2025	SCALE:
DRAWN BY: JEP	DESIGNED BY: ZDB

SHEET TITLE:

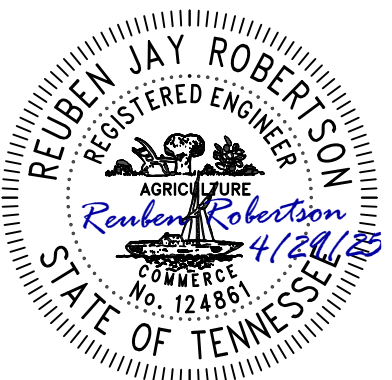
TYPICAL DETAILS



LDA ENGINEERING

01	04/2025	PROPOSED LAYOUT REVISED TO REFLECT ENTIRE CORRIDOR				
REV	DATE	REVISION DESCRIPTION				

METROPOLITAN GOVERNMENT OF NASHVILLE
AND DAVIDSON COUNTY, TENNESSEE
BELL ROAD BIKEWAY AND ROADWAY IMPROVEMENTS
FROM SMITH SPRINGS ROAD TO BLACKWOOD DRIVE



PROJECT NUMBER: NDT420

DATE: 4-2025	SCALE: 1"=20'
---------------------	----------------------

DRAWN BY: JEP	DESIGNED BY: ZDB
--------------------------------	-----------------------------------

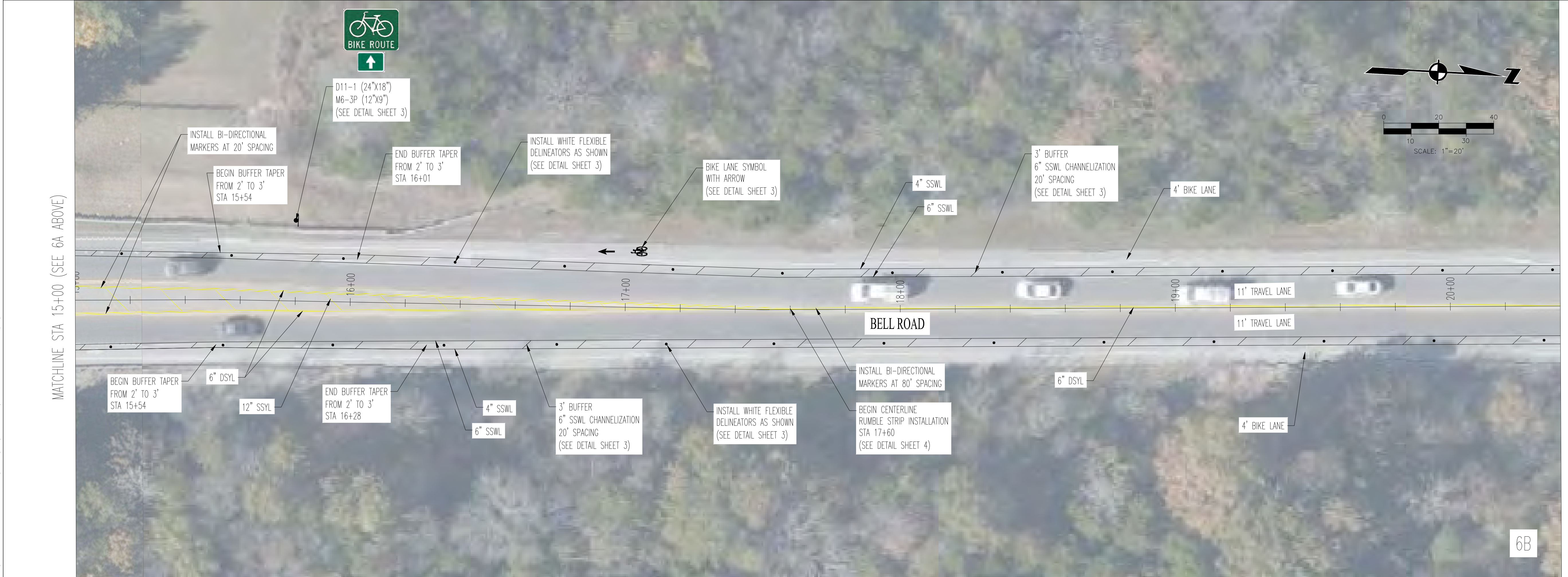
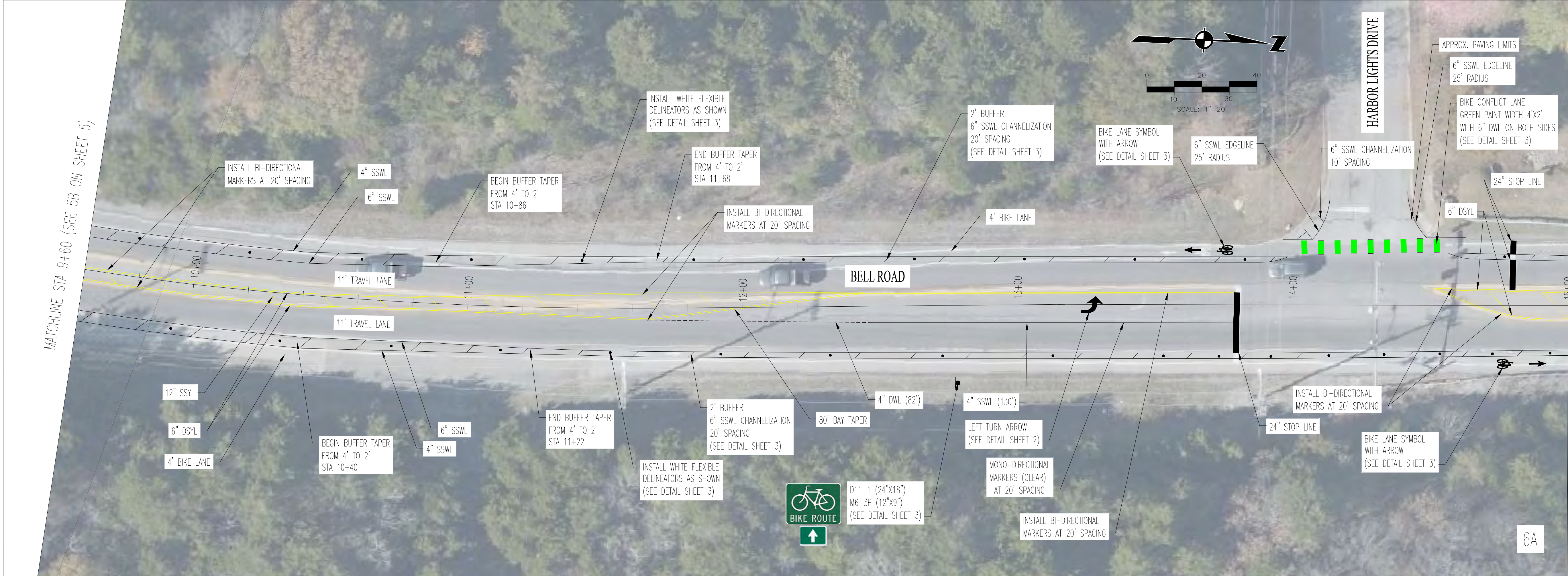
SHEET TITLE:

PROPOSED LAYOUT

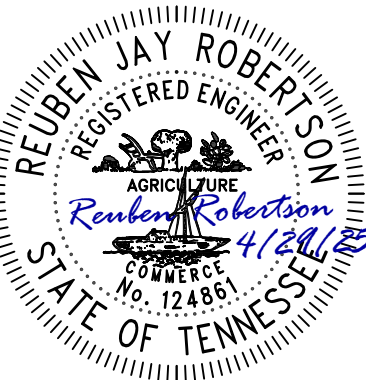
STA 00+00 TO STA 9+60

SHEET 5 OF 27

C:\BELLUR_P\01_BW_D13_2024-01A\DESIGN\ROAD SHEET FILES\BELL RD SITE 3 FULLING. 4/25/2025 4:11 PM, JERRY CLARK



MATCHLINE STA 20+40 (SEE 7A ON SHEET 7)



PROJECT NUMBER: NDT420
DATE: 4-2025 SCALE: 1"=20'
DRAWN BY: JEP DESIGNED BY: ZDB
SHEET TITLE:

PROPOSED LAYOUT

STA 9+60 TO STA 20+40

SHEET 6 OF 27

METROPOLITAN GOVERNMENT OF NASHVILLE
AND DAVIDSON COUNTY, TENNESSEE
BELL ROAD BIKEWAY AND ROADWAY IMPROVEMENTS
FROM SMITH SPRINGS ROAD TO BLACKWOOD DRIVE

REV	DATE	REVISION DESCRIPTION
01	04/2025	PROPOSED LAYOUT REVISED TO REFLECT PROJECT CHANGES



LDA ENGINEERING

C:\BELLRD_P\01_BW_013_2024-014\DESIGN\040\01 SHEET FILES\BELL RD SITE 3 FULLDWG_4/25/2025 4:11 PM JERRY CLARK

MATCHLINE STA 25+80 (SEE 7A ABOVE)

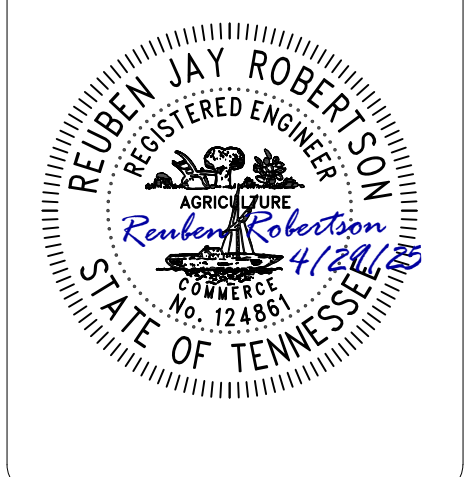
MATCHLINE STA 20+40 (SEE 6B ON SHEET 6)



MATCHLINE STA 31+20 (SEE 8A ON SHEET 8)



MATCHLINE STA 25+80 (SEE 7B BELOW)



PROJECT NUMBER: NDT420
DATE: 4-2025 SCALE: 1"=20'
DRAWN BY: JEP DESIGNED BY: ZDB
SHEET TITLE:

PROPOSED
LAYOUT
STA 20+40 TO STA 31+20
SHEET 7 OF 27

METROPOLITAN GOVERNMENT OF NASHVILLE
AND DAVIDSON COUNTY, TENNESSEE
BELL ROAD BIKEWAY AND ROADWAY IMPROVEMENTS
FROM SMITH SPRINGS ROAD TO BLACKWOOD DRIVE

REV	DATE	REVISION DESCRIPTION
01	04/2025	PROPOSED LAYOUT REMOVED TO REFLECT IMPROVEMENTS



C:\BELLOD_P\01_BW_013_2024-014\DESIGN\040\SHEET FILES\BELL RD SITE 3 PULLING 4/25/2025 4:11 PM JERRY CLARK

MATCHLINE STA 47+40 (SEE 9A ABOVE)

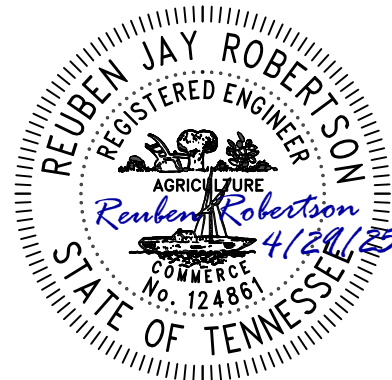


MATCHLINE STA 53+00 (SEE 10A ON SHEET 10)

MATCHLINE STA 42+00 (SEE 8B ON SHEET 8)



MATCHLINE STA 47+40 (SEE 9B BELOW)



PROJECT NUMBER: NDT420
DATE: 4-2025 SCALE: 1"=20'
DRAWN BY: JEP DESIGNED BY: ZDB

SHEET TITLE:
PROPOSED LAYOUT
STA 42+00 TO STA 53+00
SHEET 9 OF 27

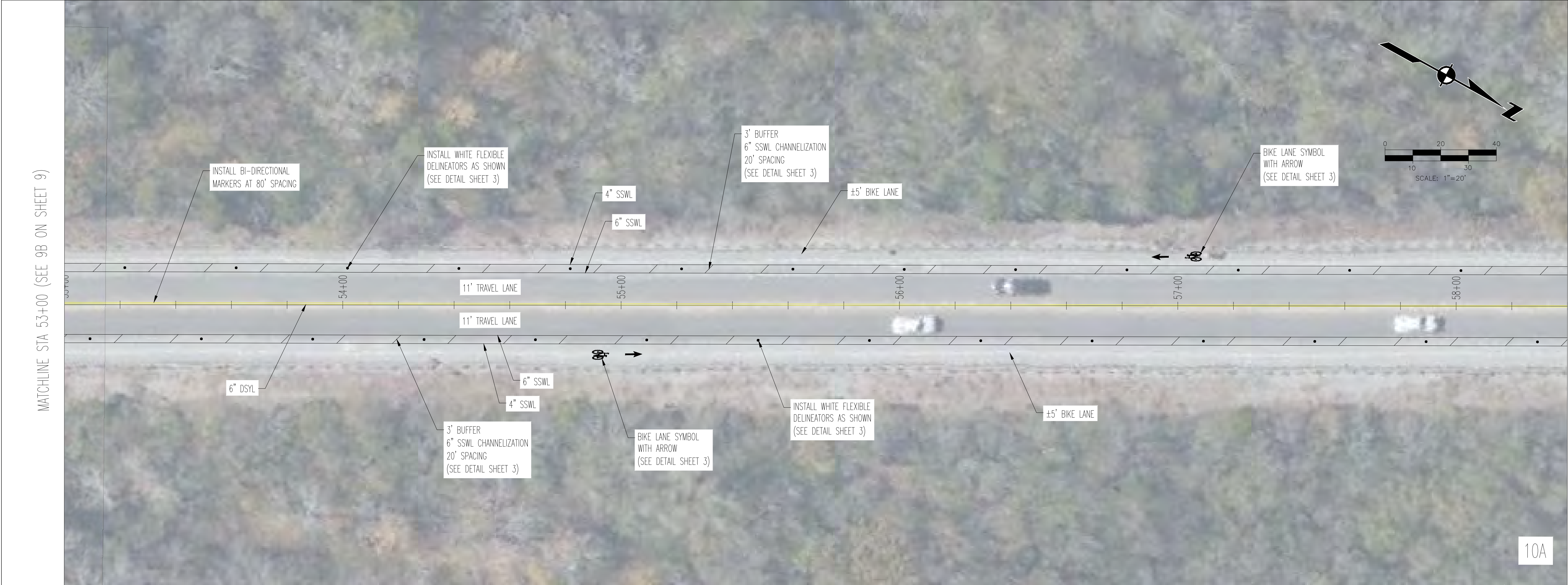
METROPOLITAN GOVERNMENT OF NASHVILLE
AND DAVIDSON COUNTY, TENNESSEE
BELL ROAD BIKEWAY AND ROADWAY IMPROVEMENTS
FROM SMITH SPRINGS ROAD TO BLACKWOOD DRIVE

REV	DATE	REVISION DESCRIPTION
01	04/2025	PROPOSED LAYOUT REMOVED TO REFLECT IMPROVEMENTS



LDA ENGINEERING

C:\BELLRD_P\01_BW_013_2024-01A\DESIGN\ROAD\Sheet Files\Bell RD Site 3 PULLING 4/25/2025 4:12 PM JERRY CLARK



MATCHLINE STA 58+40 (SEE 10B BELOW)



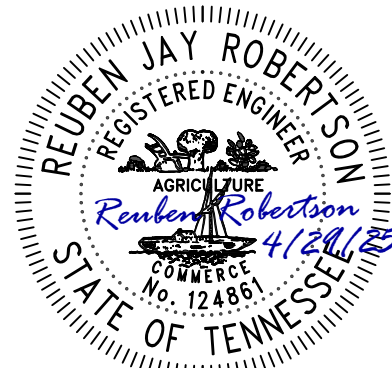
MATCHLINE STA 63+40 (SEE 11A ON SHEET 11)



LDA ENGINEERING

REV	DATE	REVISION DESCRIPTION
01	04/2025	PROPOSED LAYOUT REMOVED TO REFLECT IMPROVEMENTS TO THE PROJECT

METROPOLITAN GOVERNMENT OF NASHVILLE
AND DAVIDSON COUNTY, TENNESSEE
BELL ROAD BIKEWAY AND ROADWAY IMPROVEMENTS
FROM SMITH SPRINGS ROAD TO BLACKWOOD DRIVE



PROJECT NUMBER: NDT420
DATE: 4-2025 SCALE: 1"=20'
DRAWN BY: JEP DESIGNED BY: ZDB
SHEET TITLE:

PROPOSED
LAYOUT

STA 53+00 TO STA 63+40

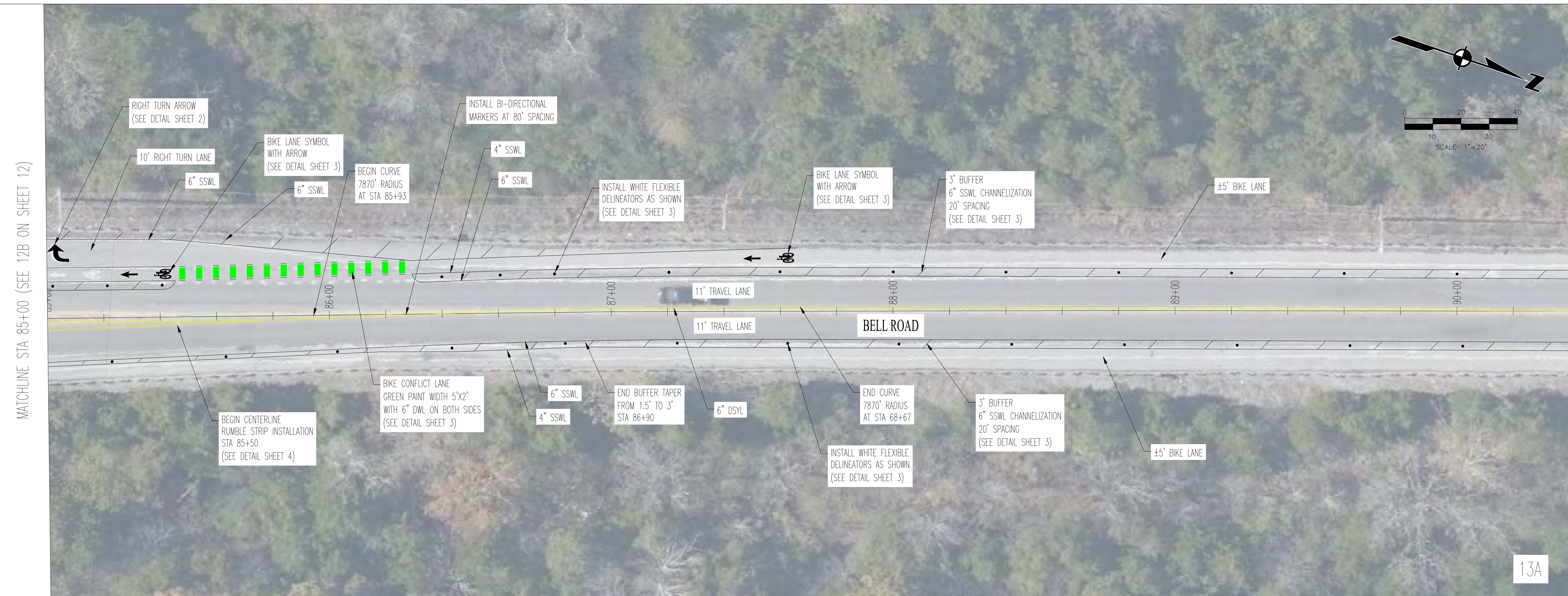
SHEET 10 OF 27

C:\BELLRD_P\01_BW_D13_2024-01\DESIGN\04\01 SHEET FILES\BELL RD SITE 3 PULLING 4/25/2025 4:12 PM JERRY CLARK

MATCHLINE STA 90+40 (SEE 13A ABOVE)

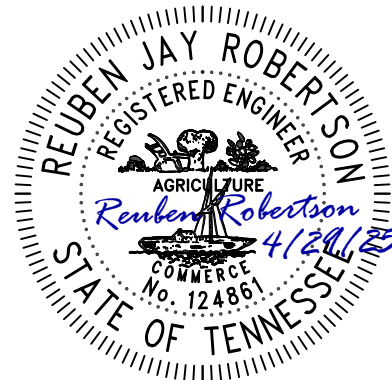


MATCHLINE STA 95+80 (SEE 14A ON SHEET 14)



MATCHLINE STA 90+40 (SEE 13B BELOW)

MATCHLINE STA 85+00 (SEE 12B ON SHEET 12)



PROJECT NUMBER: NDT420	
DATE: 4-2025	SCALE: 1"=20'
DRAWN BY: JEP	DESIGNED BY: ZDB
SHEET TITLE:	
PROPOSED LAYOUT	
STA 85+00 TO STA 95+80	
SHEET 13 OF 27	

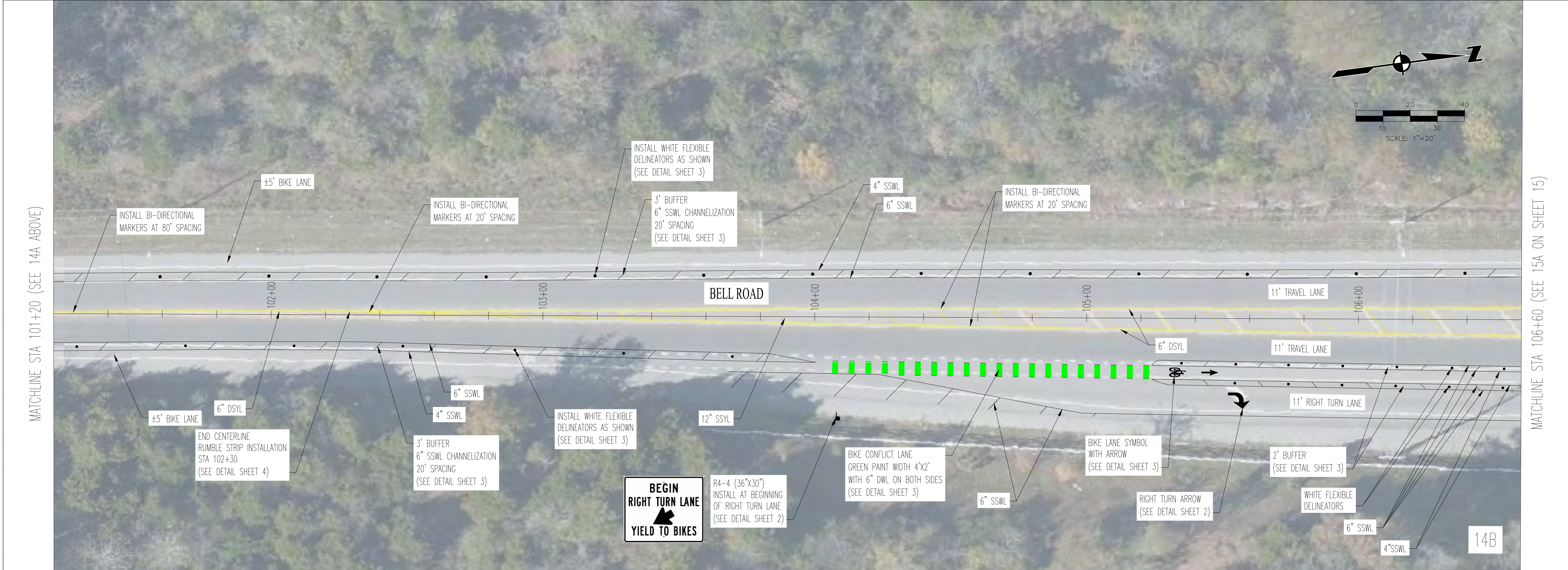
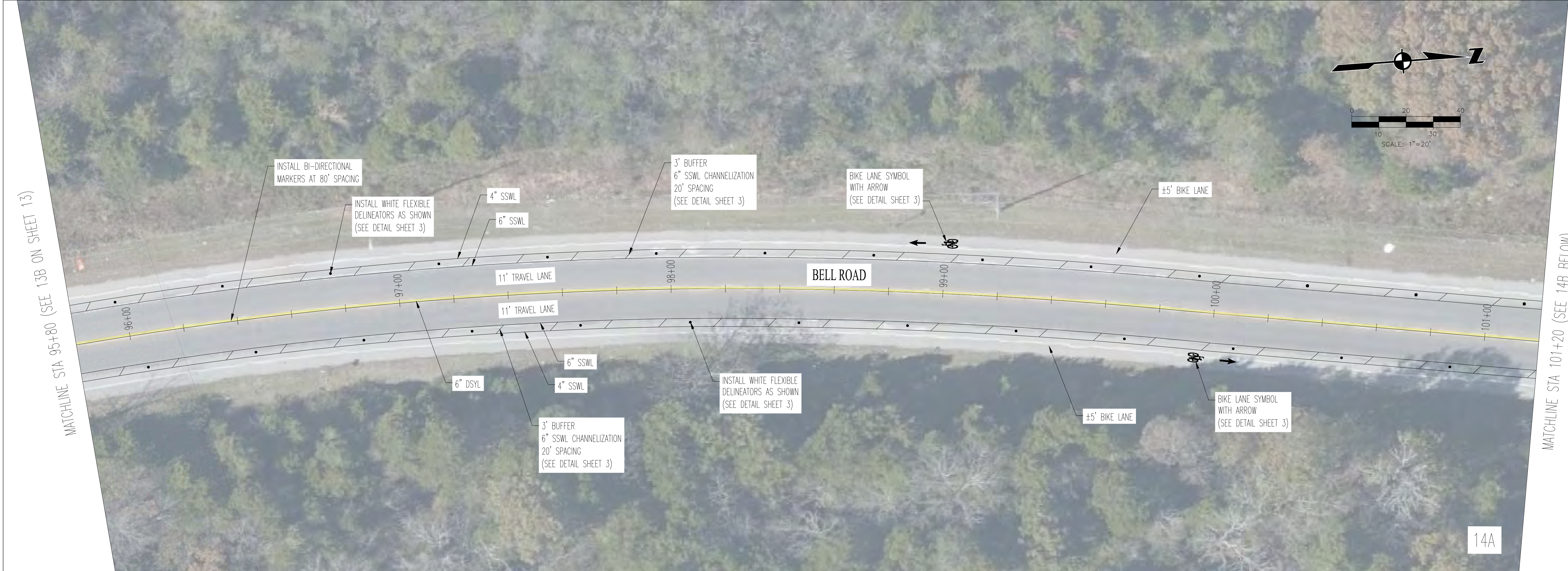
METROPOLITAN GOVERNMENT OF NASHVILLE
AND DAVIDSON COUNTY, TENNESSEE
BELL ROAD BIKEWAY AND ROADWAY IMPROVEMENTS
FROM SMITH SPRINGS ROAD TO BLACKWOOD DRIVE

REV	DATE	REVISION DESCRIPTION
01	04/2025	PROPOSED LAYOUT REMOVED TO REFLECT PROJECT REVISIONS



LDA ENGINEERING

C:\BELLRD_P\01_BW_013_2024-04\DESIGN\04\01 SHEET FILES\BELL RD SITE 3 FULLING 4/25/2025 4:13 PM JERRY CLARK



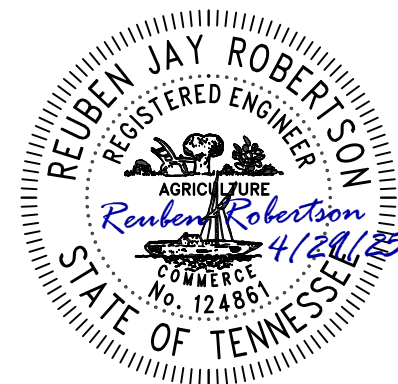
THIS DOCUMENT AND THE IDEAS AND DESIGNS INCORPORATED HEREIN, AS AN INSTRUMENT OF PROFESSIONAL SERVICE, IS THE PROPERTY OF LDA ENGINEERING AND IS NOT TO BE USED, IN WHOLE OR IN PART, FOR ANY OTHER PROJECT WITHOUT THE WRITTEN AUTHORIZATION OF LDA ENGINEERING.



LDA ENGINEERING

REV	DATE	REVISION DESCRIPTION
01	04/2025	PROPOSED LAYOUT REVISED TO REFLECT PRELIMINARY DESIGN

METROPOLITAN GOVERNMENT OF NASHVILLE
AND DAVIDSON COUNTY, TENNESSEE
BELL ROAD BIKEWAY AND ROADWAY IMPROVEMENTS
FROM SMITH SPRINGS ROAD TO BLACKWOOD DRIVE



PROJECT NUMBER: NDT420
DATE: 4-2025 SCALE: 1"=20'
DRAWN BY: JEP DESIGNED BY: ZDB
SHEET TITLE:

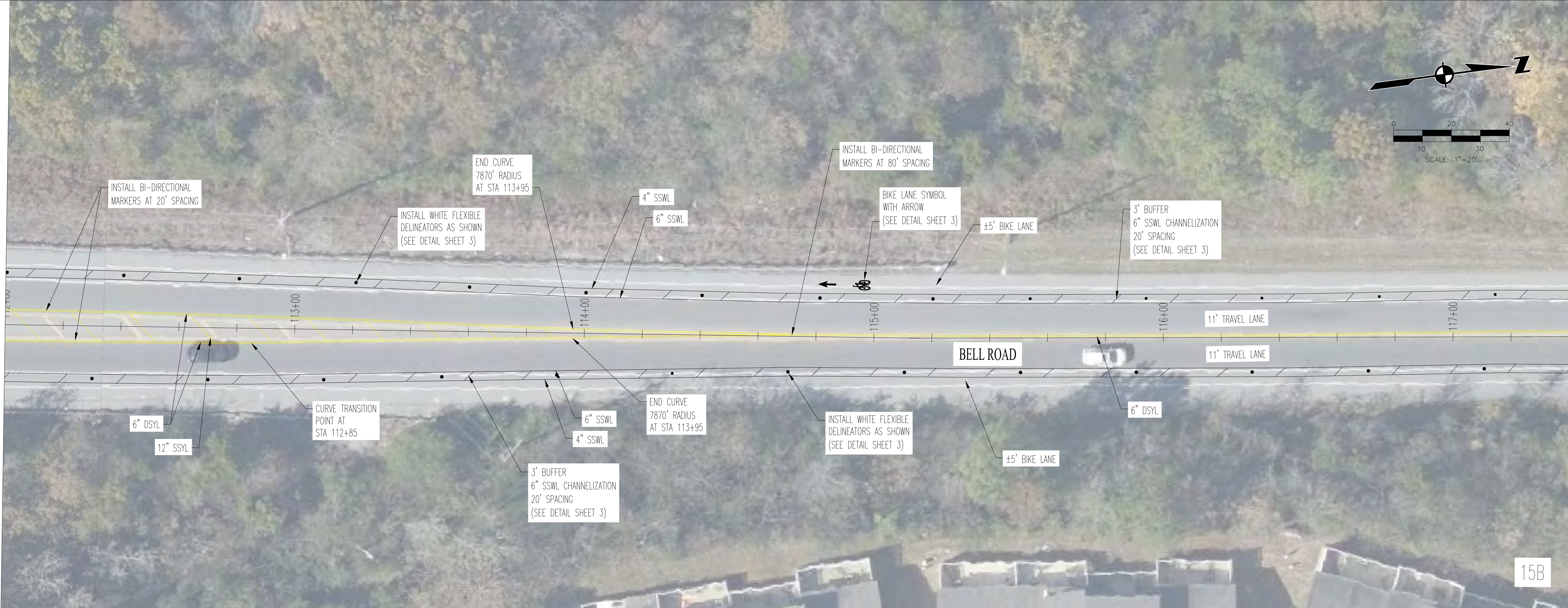
PROPOSED
LAYOUT

STA 95+80 TO STA 106+60

SHEET 14 OF 27

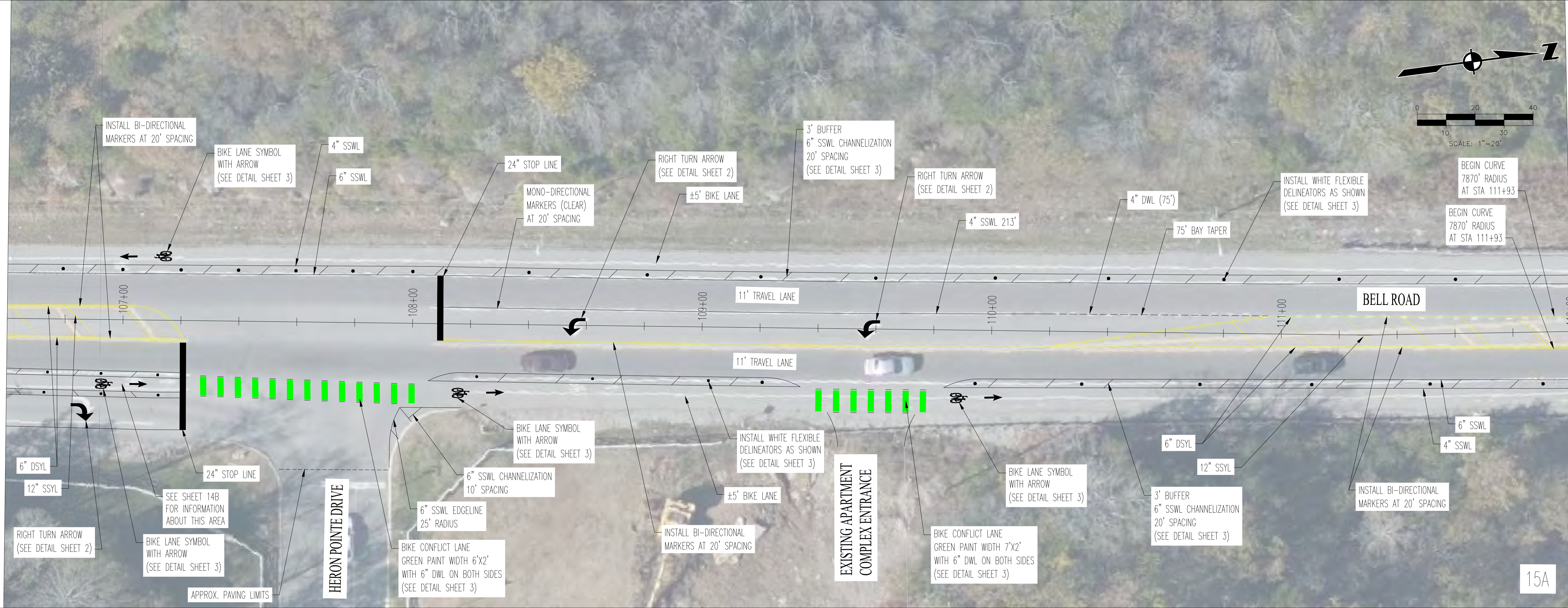
C:\BELLRD_P101_BW_D13_2024-01A\DESIGN\DWG\SHEET FILES\BELL RD SITE 3 FOLLOWING 4/25/2025 4:13 PM JERRY CLARK

MATCHLINE STA 112+00 (SEE 15A ABOVE)



MATCHLINE STA 117+40 (SEE 16A ON SHEET 16)

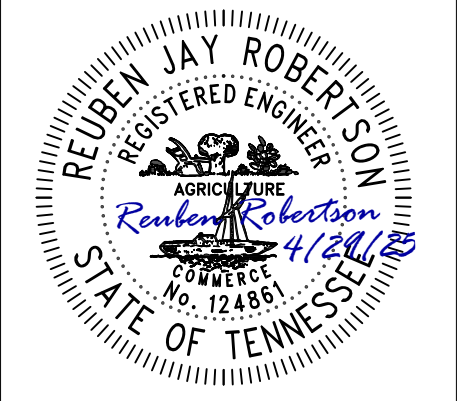
MATCHLINE STA 106+60 (SEE 14B ON SHEET 14)



MATCHLINE STA 112+00 (SEE 15B BELOW)

REV	DATE	REVISION DESCRIPTION
01	04/2025	PROPOSED LAYOUT REMOVED TO REFLECT IMPROVEMENTS

METROPOLITAN GOVERNMENT OF NASHVILLE
AND DAVIDSON COUNTY, TENNESSEE
BELL ROAD BIKEWAY AND ROADWAY IMPROVEMENTS
FROM SMITH SPRINGS ROAD TO BLACKWOOD DRIVE



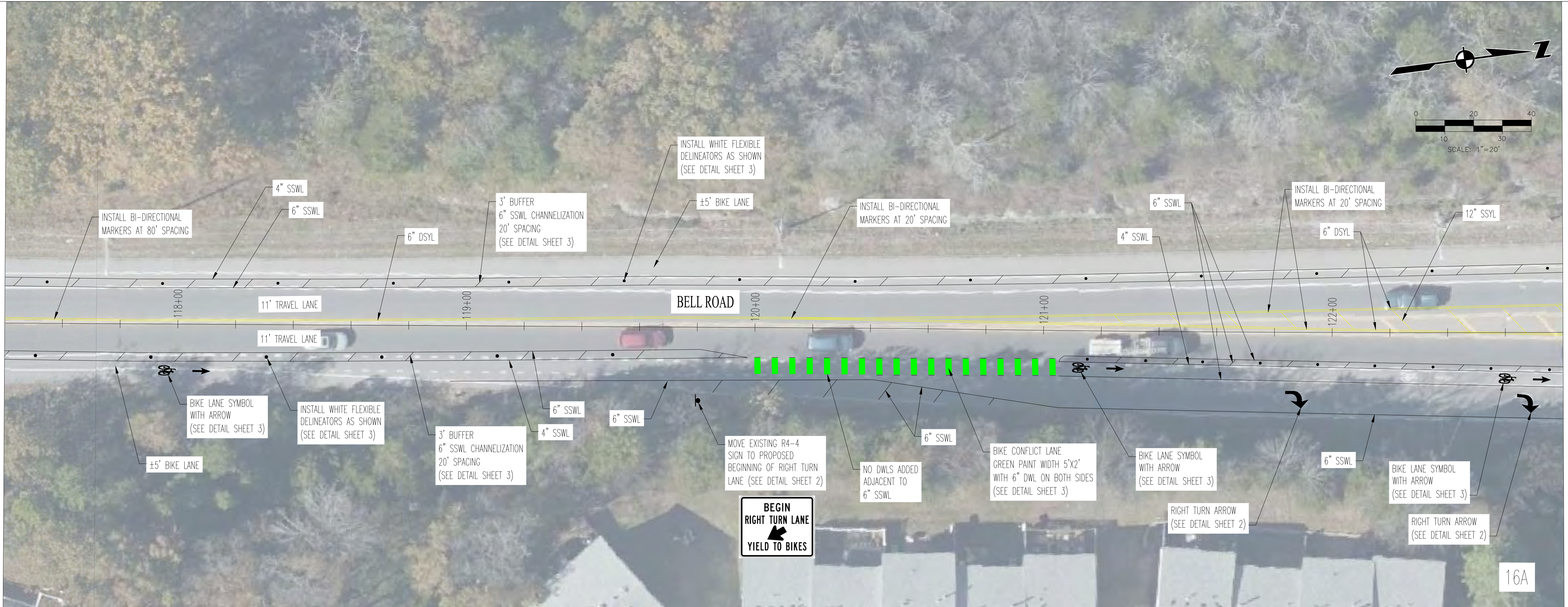
PROJECT NUMBER: NDT420
DATE: 4-2025 SCALE: 1"=20'
DRAWN BY: JEP DESIGNED BY: ZDB
SHEET TITLE:

PROPOSED
LAYOUT
STA 106+60 TO STA 117+40
SHEET 15 OF 27



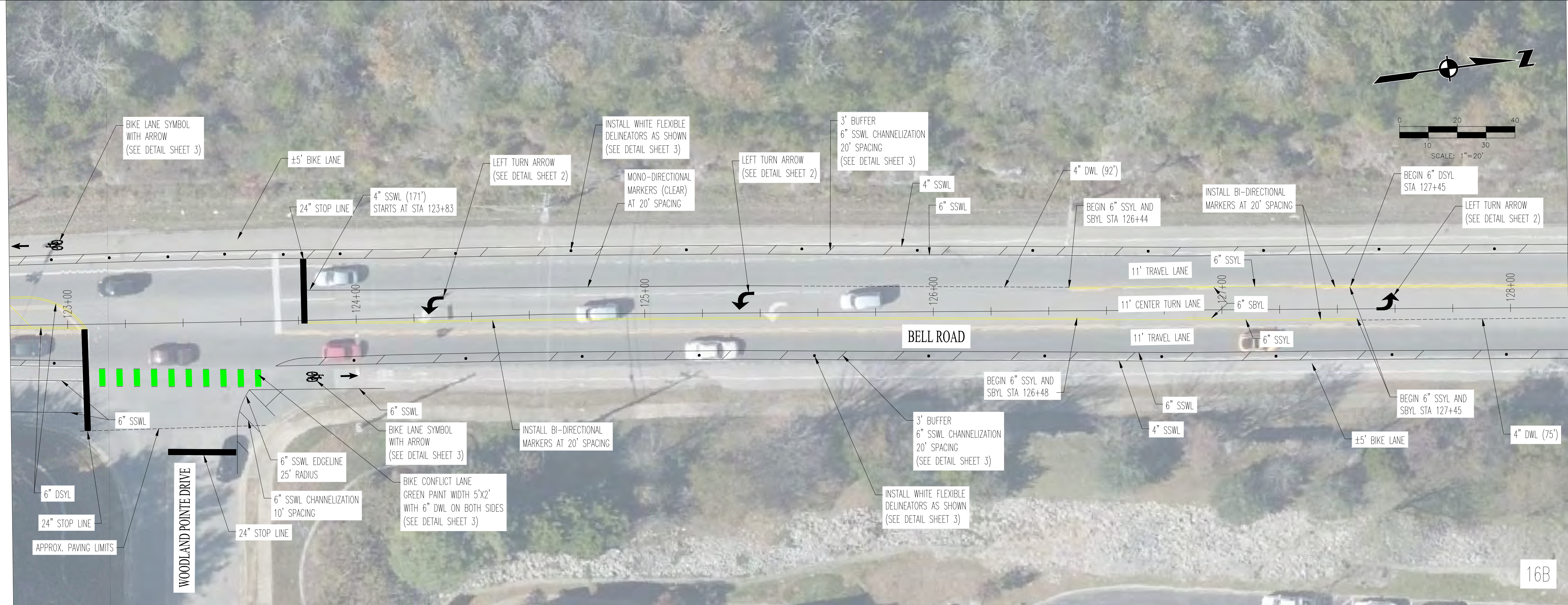
C:\BELLRD_P\01_BW.DWG, 2024-04-25 4:13 PM, JERRY CLARK

MATCHLINE STA 117+40 (SEE 15B ON SHEET 15)



MATCHLINE STA 122+80 (SEE 16B BELOW)

MATCHLINE STA 122+80 (SEE 16A ABOVE)



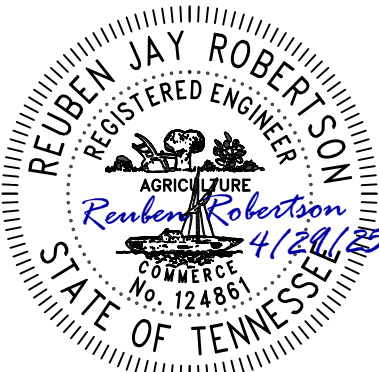
MATCHLINE STA 128+20 (SEE 17A ON SHEET 17)



LDA ENGINEERING

REV	DATE	REVISION DESCRIPTION
01	04/2025	PROPOSED LAYOUT REMOVED TO REFLECT IMPROVEMENTS

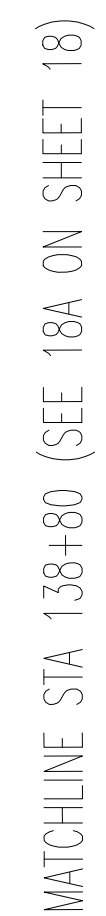
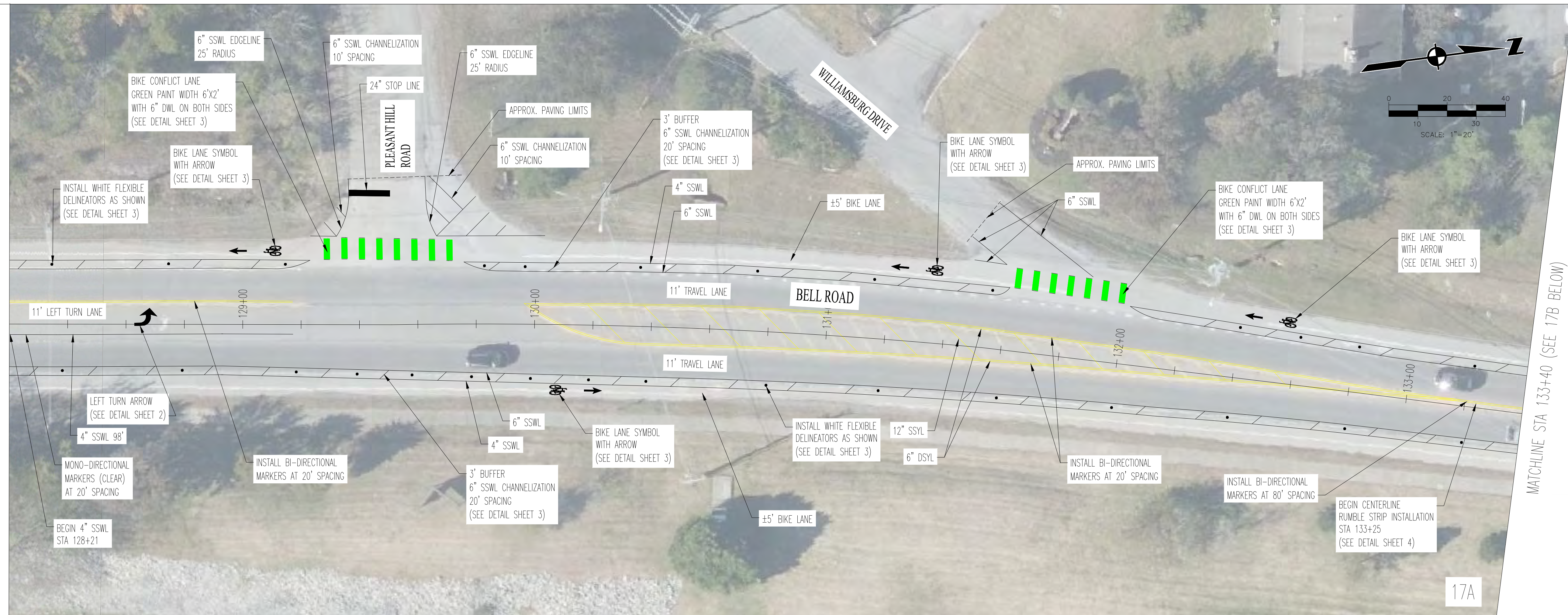
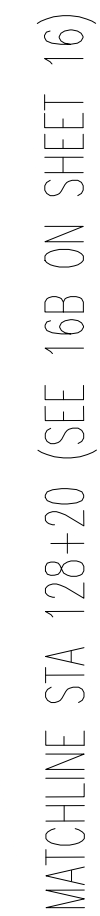
METROPOLITAN GOVERNMENT OF NASHVILLE
AND DAVIDSON COUNTY, TENNESSEE
BELL ROAD BIKEWAY AND ROADWAY IMPROVEMENTS
FROM SMITH SPRINGS ROAD TO BLACKWOOD DRIVE



PROJECT NUMBER: NDT420
DATE: 4-2025 SCALE: 1"=20'
DRAWN BY: JEP DESIGNED BY: ZDB

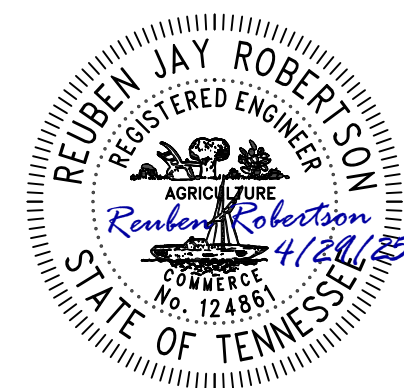
SHEET TITLE:
PROPOSED LAYOUT

STA 117+40 TO STA 128+20
SHEET 16 OF 27



01	04/2025	PROPOSED LAYOUT REVISED TO REFLECT LATEL STANDARD
REV	DATE	REVISION DESCRIPTION

**METROPOLITAN GOVERNMENT OF NASHVILLE
AND DAVIDSON COUNTY, TENNESSEE
BELL ROAD BIKEWAY AND ROADWAY IMPROVEMENTS
FROM SMITH SPRINGS ROAD TO BLACKWOOD DRIVE**



PROJECT NUMBER: NDT420

DATE: 4-2025	SCALE: 1"=20'
---------------------	----------------------

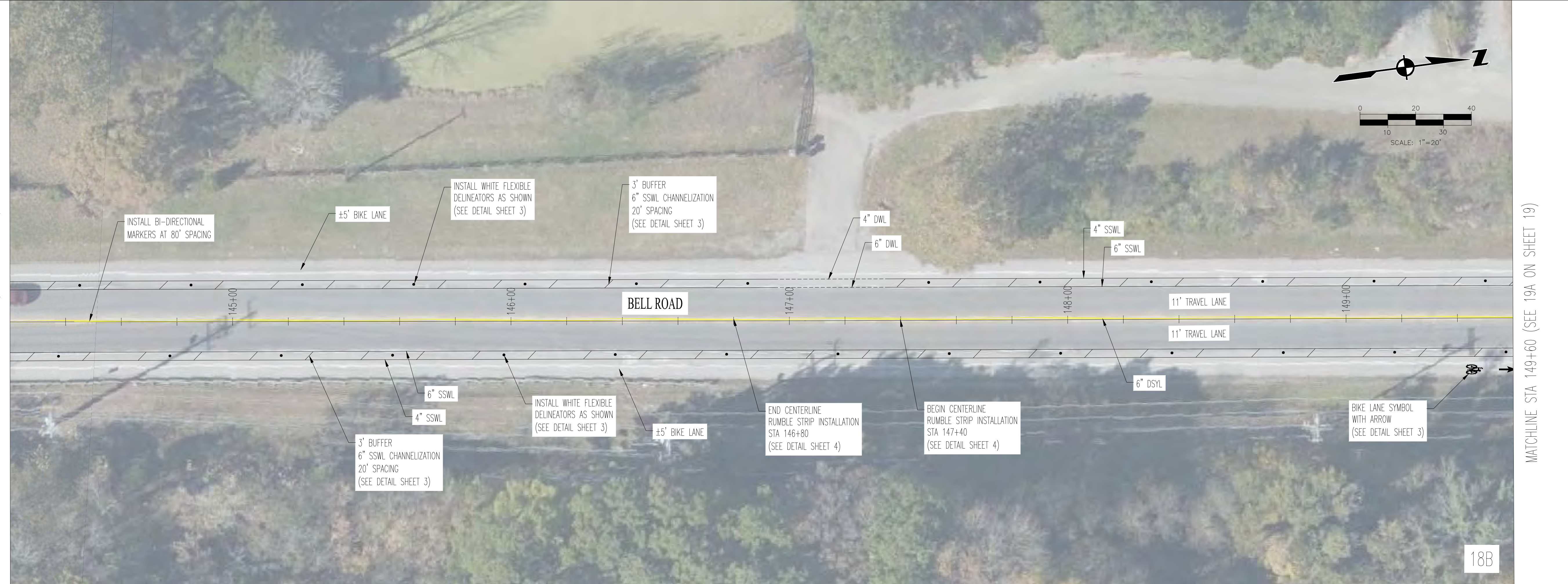
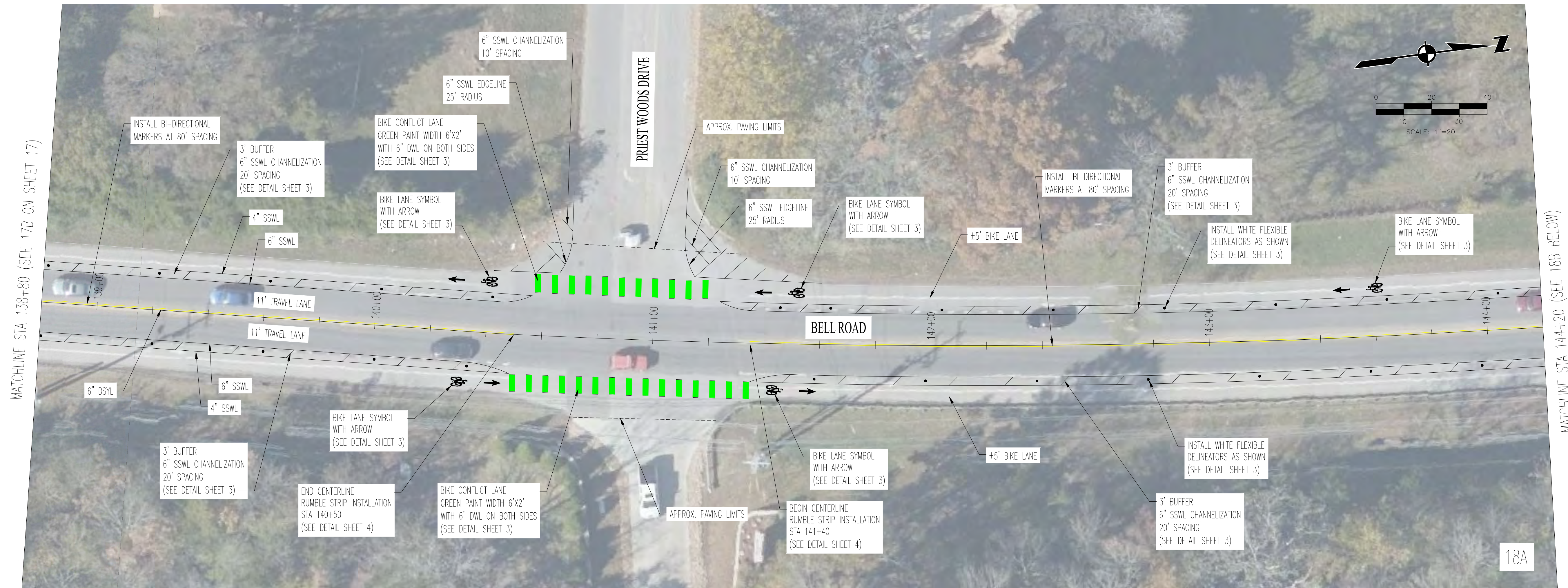
DRAWN BY: JEP	DESIGNED BY: ZDB
--------------------------------	-----------------------------------

SHEET TITLE:

PROPOSED LAYOUT

STA 128+20 TO STA 138+80

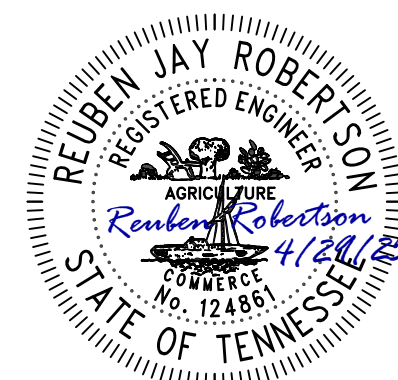
SHEET 17 OF 27



LDA ENGINEERING

	01	04/2025	PROPOSED LAYOUT REVISED TO REFLECT ENTIRE CONCEPT
REV	DATE		REVISION DESCRIPTION

**METROPOLITAN GOVERNMENT OF NASHVILLE
AND DAVIDSON COUNTY, TENNESSEE**
BELL ROAD BIKEWAY AND ROADWAY IMPROVEMENTS
FROM SMITH SPRINGS ROAD TO BLACKWOOD DRIVE



PROJECT NUMBER: NDT420

DATE: 4-2025	SCALE: 1"=20'
---------------------	----------------------

DRAWN BY: JEP	DESIGNED BY: ZDB
--------------------------------	-----------------------------------

SHEET TITLE:

PROPOSED LAYOUT

STA 138+80 TO STA 149+60

SHEET 18 OF 27

C:\BELL RD PH01 BW D13 2024-014\DESIGN\CAD\SHEET FILES\BELL RD SITE 3 FULLDWG. 4/25/2025 4:14 PM. JERRY CLARK

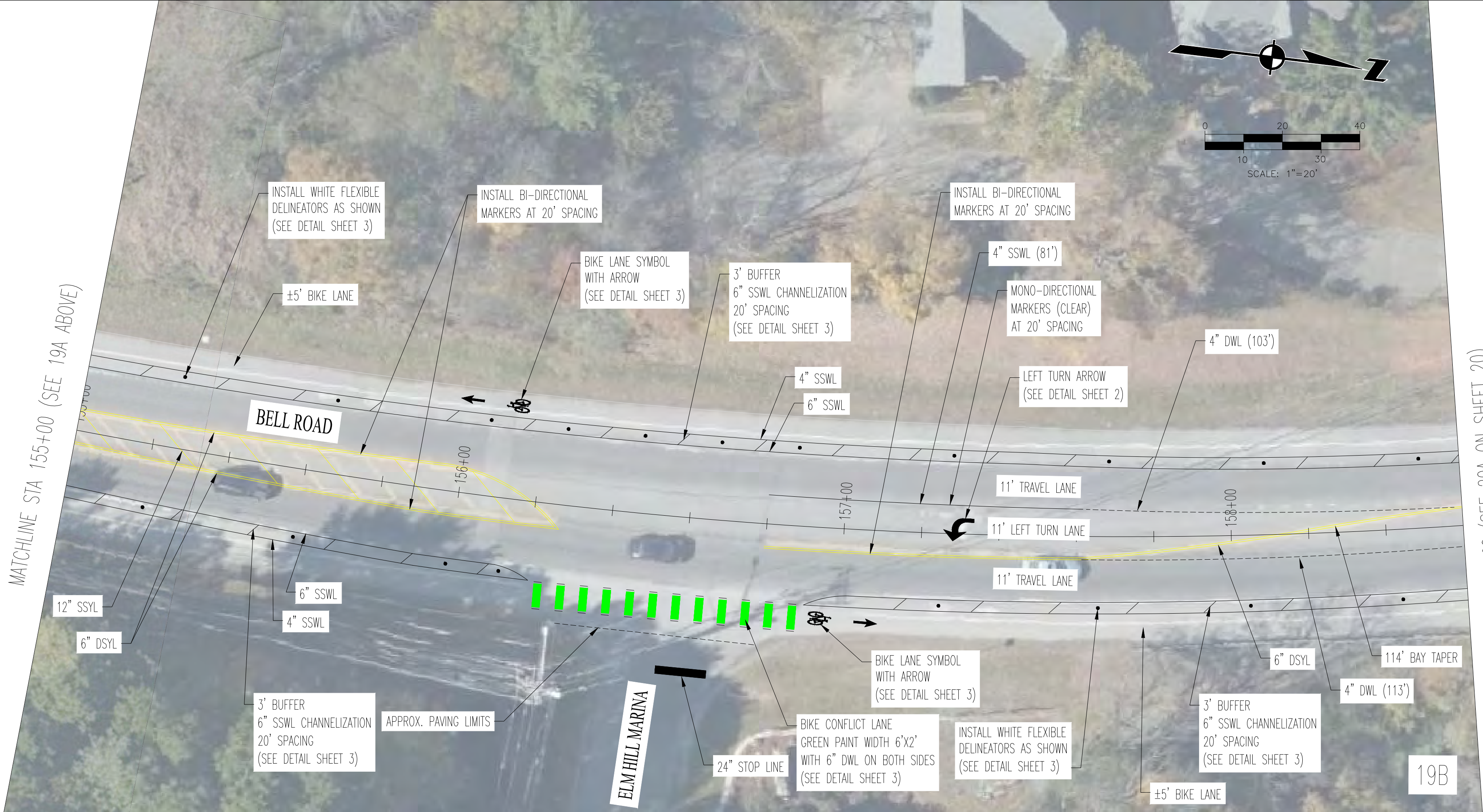
THIS DOCUMENT AND THE IDEAS AND DESIGNS INCORPORATED HEREIN, AS AN INSTRUMENT OF PROFESSIONAL SERVICE, IS THE PROPERTY OF LDA ENGINEERING AND IS NOT TO BE USED, IN WHOLE OR IN PART, FOR ANY OTHER PROJECT WITHOUT THE WRITTEN AUTHORIZATION OF LDA ENGINEERING.

C:\BELLD\PH01_BW_D13_2024-04\DESIGN\ROAD\Sheet Files\Bell RD Site 3 PULLING 4/25/2025 4:14 PM JERRY CLARK

MATCHLINE STA 149+60 (SEE 18B ON SHEET 18)



MATCHLINE STA 155+00 (SEE 19B BELOW)



PROJECT NUMBER: NDT420
DATE: 4-2025 SCALE: 1"=20'
DRAWN BY: JEP DESIGNED BY: ZDB
SHEET TITLE:

PROPOSED
LAYOUT

STA 149+60 TO STA 158+60

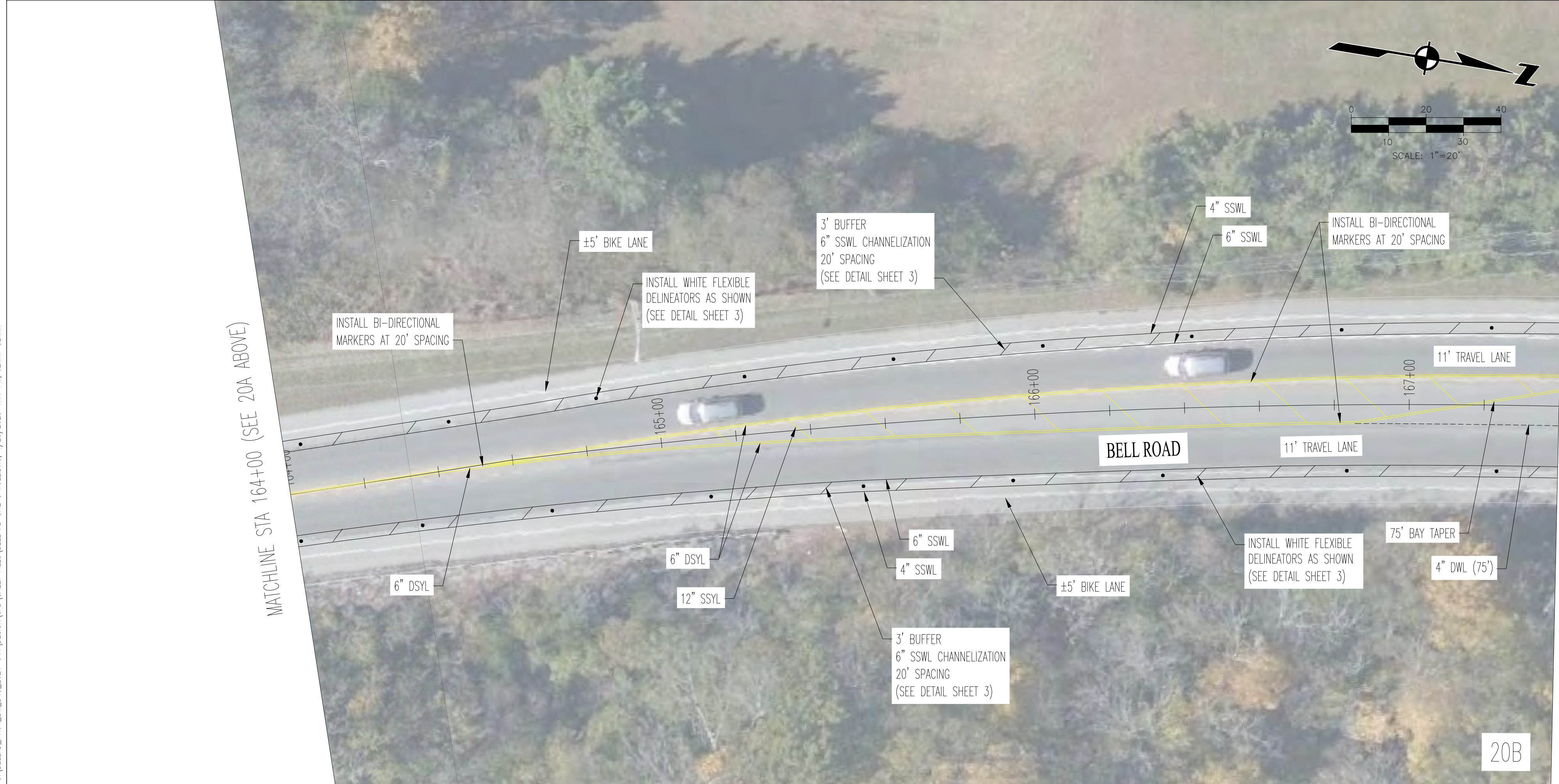
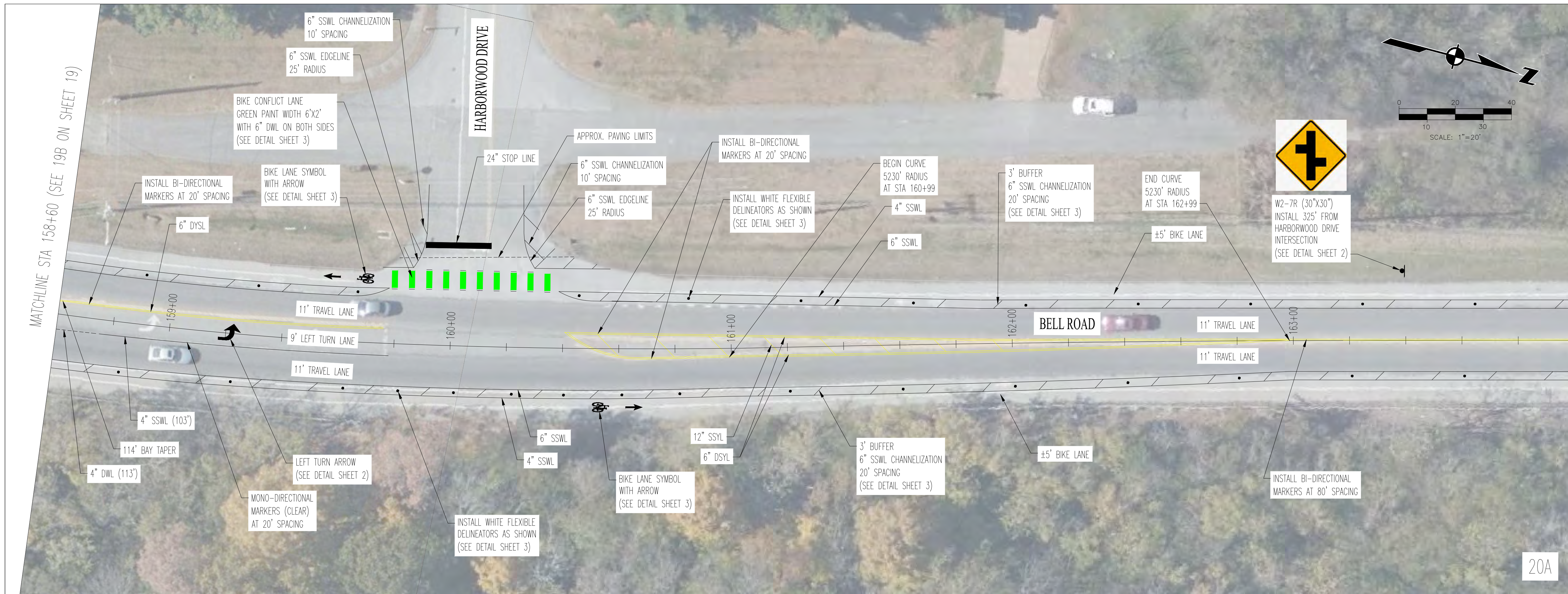
SHEET 19 OF 27

METROPOLITAN GOVERNMENT OF NASHVILLE
AND DAVIDSON COUNTY, TENNESSEE
BELL ROAD BIKEWAY AND ROADWAY IMPROVEMENTS
FROM SMITH SPRINGS ROAD TO BLACKWOOD DRIVE

REV	DATE	REVISION DESCRIPTION
01	04/2025	PROPOSED LAYOUT REMOVED TO REFLECT INTER-SECTION



LDA ENGINEERING



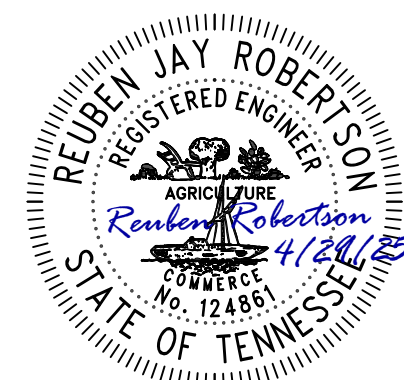
MATCHLINE STA 164+00 (SEE 20B BELOW)



LDA ENGINEERING

	01	04/2025	PROPOSED LAYOUT REVISED TO REFLECT DATE JANUARY
REV	DATE		REVISION DESCRIPTION

METROPOLITAN GOVERNMENT OF NASHVILLE
AND DAVIDSON COUNTY, TENNESSEE
BELL ROAD BIKEWAY AND ROADWAY IMPROVEMENTS
FROM SMITH SPRINGS ROAD TO BLACKWOOD DRIVE



PROJECT NUMBER: NDT420

DATE: 4-2025	SCALE: 1"=20'
--------------	---------------

DRAWN BY: JEP	DESIGNED BY: ZDB
--------------------------------	-----------------------------------

SHEET TITLE:

PROPOSED LAYOUT

STA 158+60 TO STA 167+40

SHEET 20 OF 27

C:\BELLD\PH01_BW_D13_2024-014\DESIGN\DWG\PROJECT FILES\BELL RD SITE 3 FULLING.dwg 4/25/2025 4:14 PM JERRY CLARK



22A



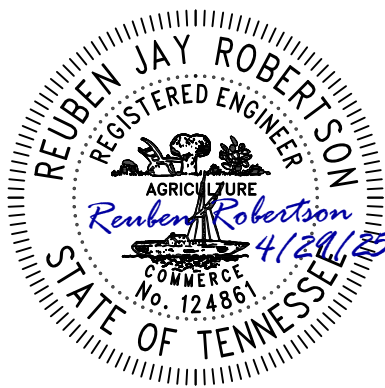
22B



LDA ENGINEERING

REV	DATE	REVISION DESCRIPTION
01	04/2025	PROPOSED LAYOUT REMOVED TO REFLECT IMPROVEMENTS

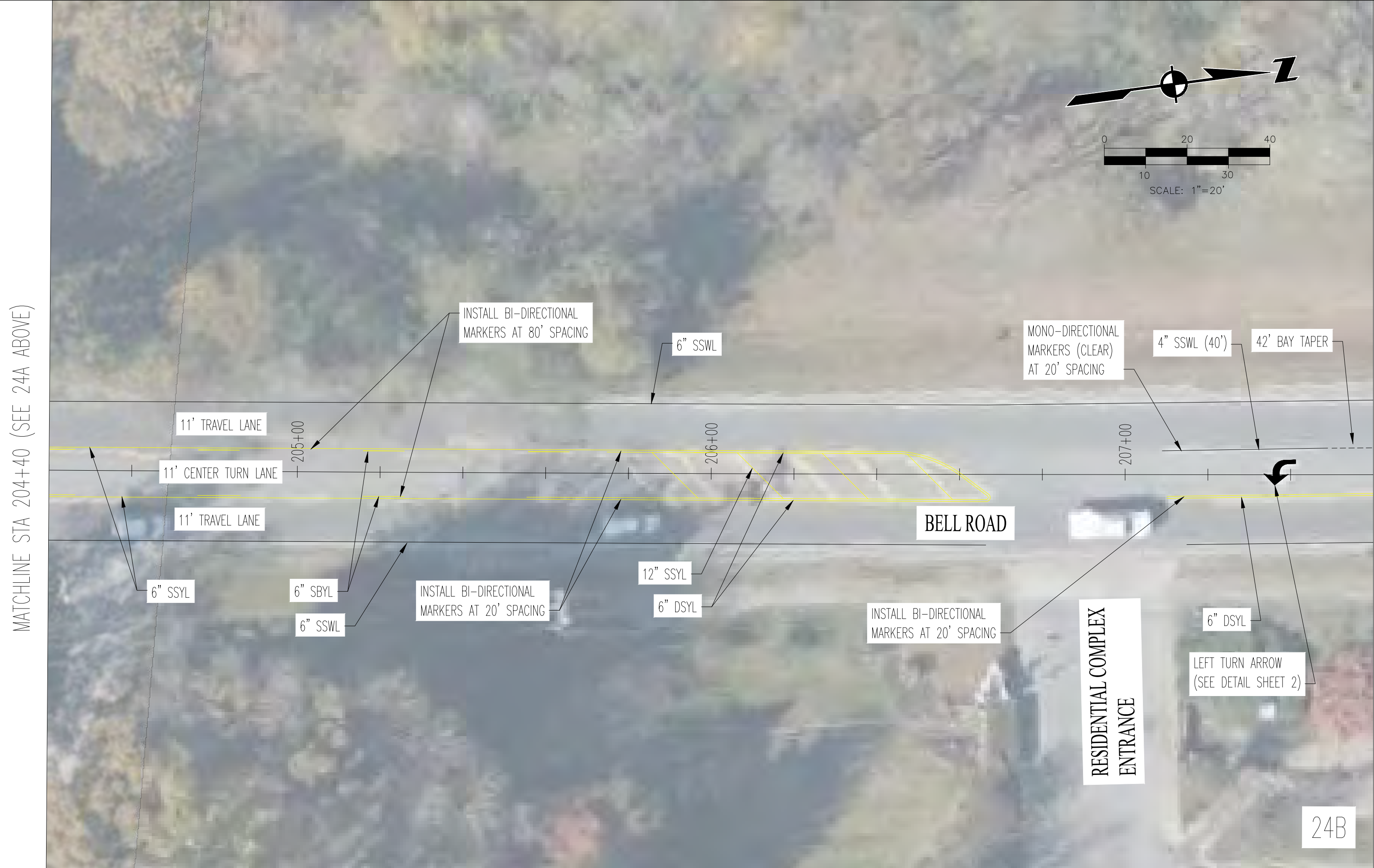
METROPOLITAN GOVERNMENT OF NASHVILLE
AND DAVIDSON COUNTY, TENNESSEE
BELL ROAD BIKEWAY AND ROADWAY IMPROVEMENTS
FROM SMITH SPRINGS ROAD TO BLACKWOOD DRIVE



PROJECT NUMBER:	NDT420
DATE:	4-2025
SCALE:	1"=20'
DRAWN BY:	JEP
DESIGNED BY:	ZDB

SHEET TITLE:
PROPOSED LAYOUT
STA 178+00 TO STA 188+60
SHEET 22 OF 27

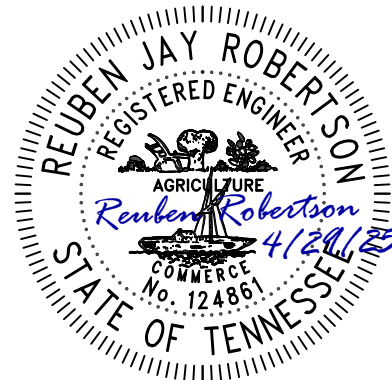
C:\BELLUR_P\01_BW_D13_2024-01A\DESIGN\040\SHEET FILES\BELL RD SITE 3 PULLING.dwg 4/25/2025 4:15 PM JERRY CLARK



LDA ENGINEERING

REV	DATE	REVISION DESCRIPTION
01	04/2025	PROPOSED LAYOUT REMOVED TO REFLECT PROPOSED BAY TAPER

METROPOLITAN GOVERNMENT OF NASHVILLE
AND DAVIDSON COUNTY, TENNESSEE
BELL ROAD BIKEWAY AND ROADWAY IMPROVEMENTS
FROM SMITH SPRINGS ROAD TO BLACKWOOD DRIVE



PROJECT NUMBER:	NDT420
DATE:	4-2025
SCALE:	1"=20'
DRAWN BY:	JEP
DESIGNED BY:	ZDB

SHEET TITLE:
PROPOSED LAYOUT
STA 199+00 TO STA 207+60
SHEET 24 OF 27

C:\BELLD\PH01_DW\DWI13_2024-04\DESIGN\ROAD\26A\26A.DWG 4/25/2025 4:15 PM JERRY CLARK

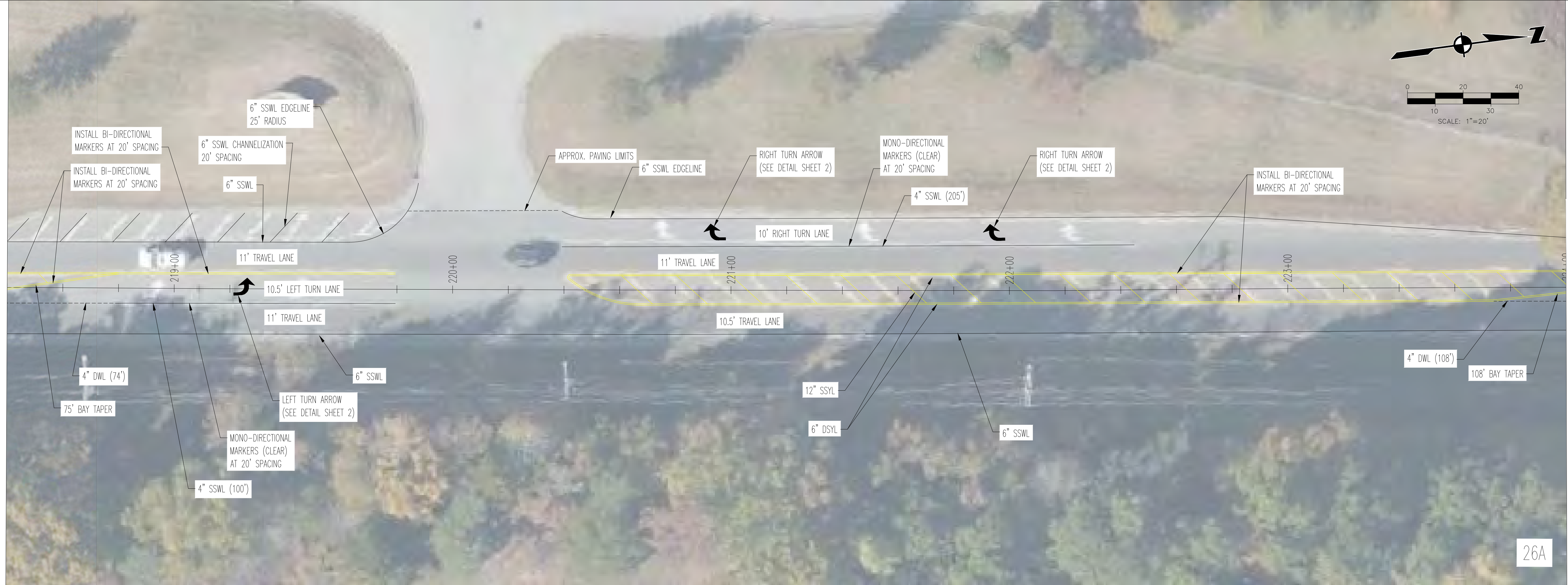
MATCHLINE STA 224+00 (SEE 26A ABOVE)



MATCHLINE STA 229+40 (SEE SHEET 27)

26B

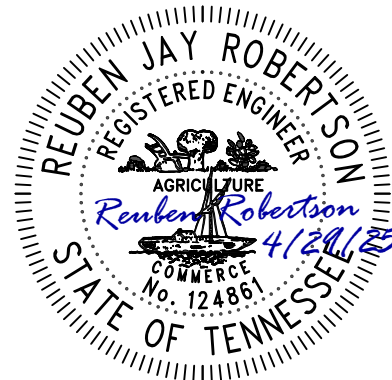
MATCHLINE STA 218+40 (SEE 25B ON SHEET 25)



MATCHLINE STA 224+00 (SEE 26B BELOW)

26A

METROPOLITAN GOVERNMENT OF NASHVILLE
AND DAVIDSON COUNTY, TENNESSEE
BELL ROAD BIKEWAY AND ROADWAY IMPROVEMENTS
FROM SMITH SPRINGS ROAD TO BLACKWOOD DRIVE



PROJECT NUMBER: NDT420
DATE: 4-2025 SCALE: 1"=20'
DRAWN BY: JEP DESIGNED BY: ZDB
SHEET TITLE:

PROPOSED
LAYOUT

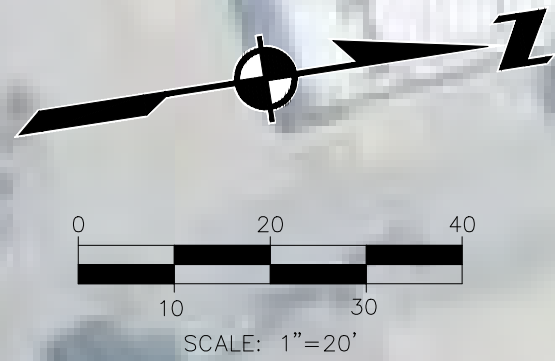
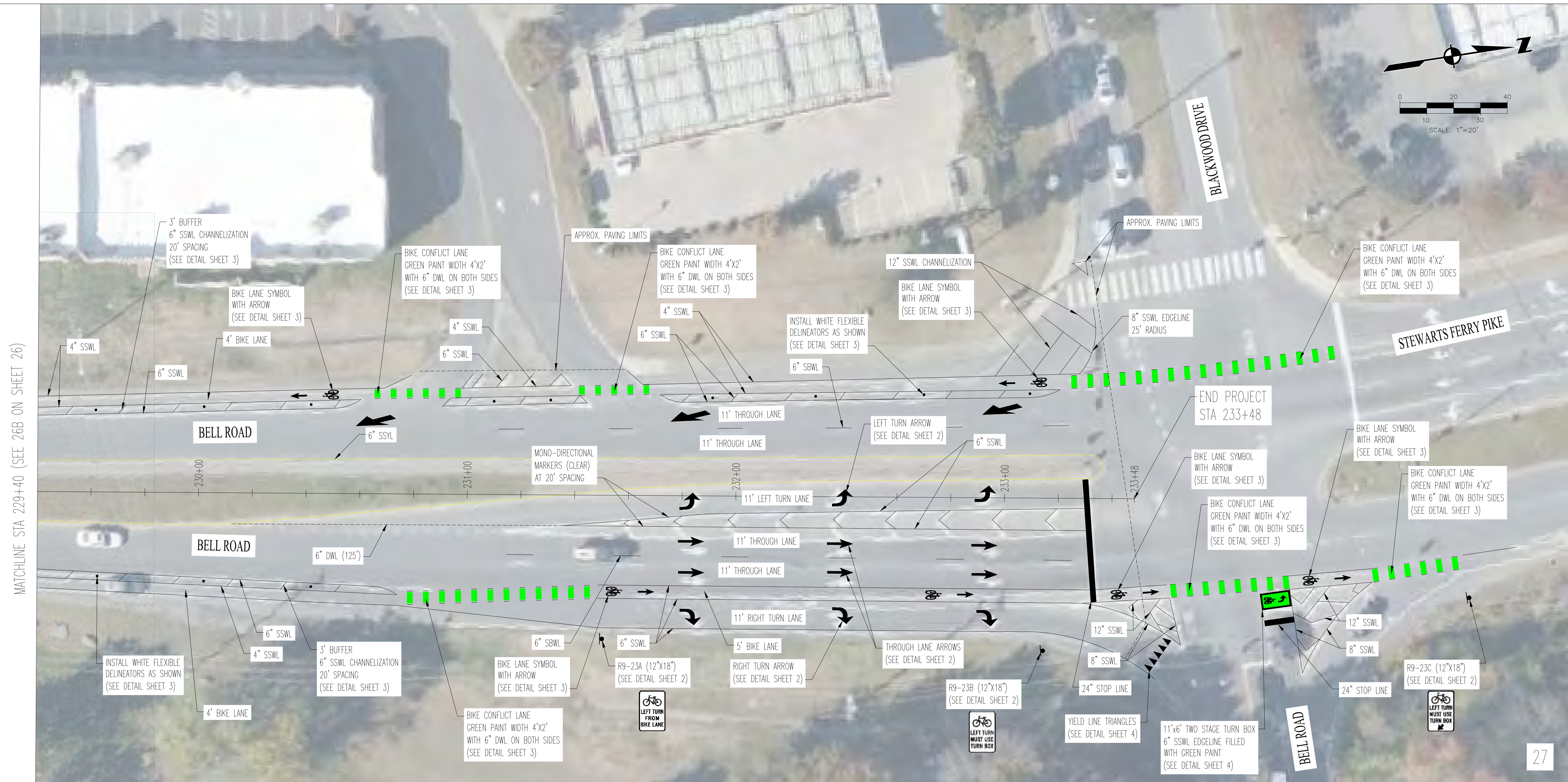
STA 218+40 TO STA 229+40

SHEET 26 OF 27



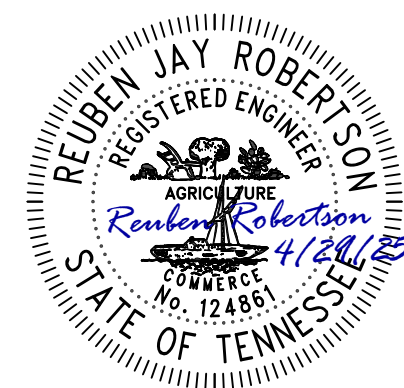
LDA ENGINEERING

REV	DATE	REVISION DESCRIPTION
01	04/2025	PROPOSED LAYOUT REMOVED TO REFLECT PROJECT REVISIONS



01	04/2023	PRODUCED LAYOUT REVISED TO REFLECT DATE CHANGES
REV	DATE	REVISION DESCRIPTION

**METROPOLITAN GOVERNMENT OF NASHVILLE
AND DAVIDSON COUNTY, TENNESSEE**
BELL ROAD BIKEWAY AND ROADWAY IMPROVEMENTS
FROM SMITH SPRINGS ROAD TO BLACKWOOD DRIVE



PROJECT NUMBER: NDT420

DATE: 4-2025

SCALE: 1"=20'

DRAWN BY
JEP

DESIGNED BY:
ZDB

SHEET TITLE:

PROPOSED LAYOUT

STA 229+40 TO STA 233+48

SHEET 27 OF 27