

PUBLIC OPEN HOUSE RESULTS SUMMARY

Plan to Play Master Plan Update

Introduction

The Parks and Recreation Department (Metro Nashville Parks) is updating its systemwide parks and recreation master plan is updating its systemwide parks and recreation master plan document, Plan to Play, originally adopted by the Metropolitan Board of Parks and Recreation on March 7, 2017. As a part of the Plan to Play Update, five public open house meetings were held to engage the public in the initial needs assessment phase of the project.

Meeting Dates

Public Session #1:

Date/Time: 5:30pm-7:00pm; Wednesday June 4th, 2025

Location: Hermitage Police Precinct, Room
3701 James Kay Ln, Hermitage, TN 37076

Public Session #2: North

Date/Time: 11am-12:30pm; Saturday June 7th, 2025

Location: Hartman Park Community Center, Room
2801 Tucker Road
Nashville, TN 37218

Public Session #3: West

Date/Time: 5:30pm-7:00pm; Tuesday June 10th, 2025

Location: Bellevue Community Center, Clubroom 1, 2, &3
7638A Highway 70 South
Nashville, TN 37221

Public Session #4: South

Date/Time: 5:30pm-7:00pm Wednesday June 11th, 2025

Location: Southeast Community Center, Room
5260 Hickory Hollow Pkwy., Suite 202
Antioch, TN 37013

Public Session #5: East/Midtown

Date/Time: 11am-12:30pm; Saturday June 14th, 2025

Location: Parks Board Room
2565 Park Plaza Nashville, TN 37203

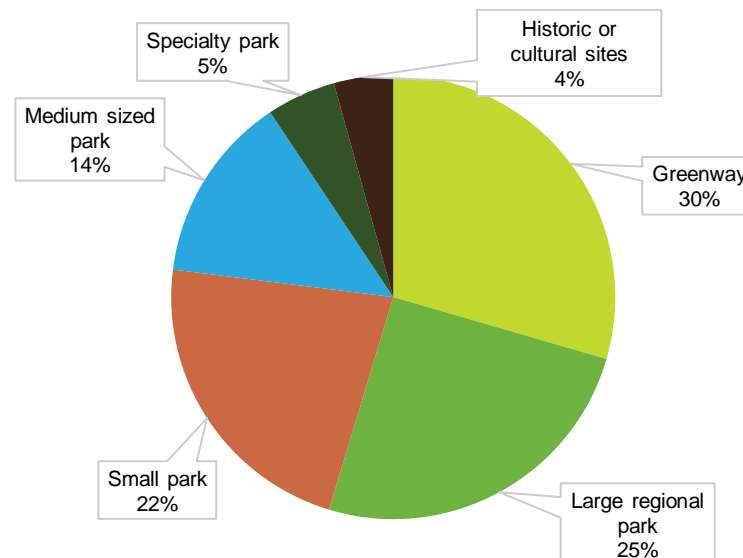
Station #1 – What is Plan to Play?

Community members were asked to describe how they feel in parks or on greenways with a one-word response. Some of the most common responses included “Relaxed”, “Happy”, “Peaceful”, “Free”, and “Calm”. This reflected a strong emotional connection to nature and these spaces. Other words like “Connected”, “Empowered”, “Loved”, and “Rejuvenated” show how these spaces might foster a sense of community and well-being.



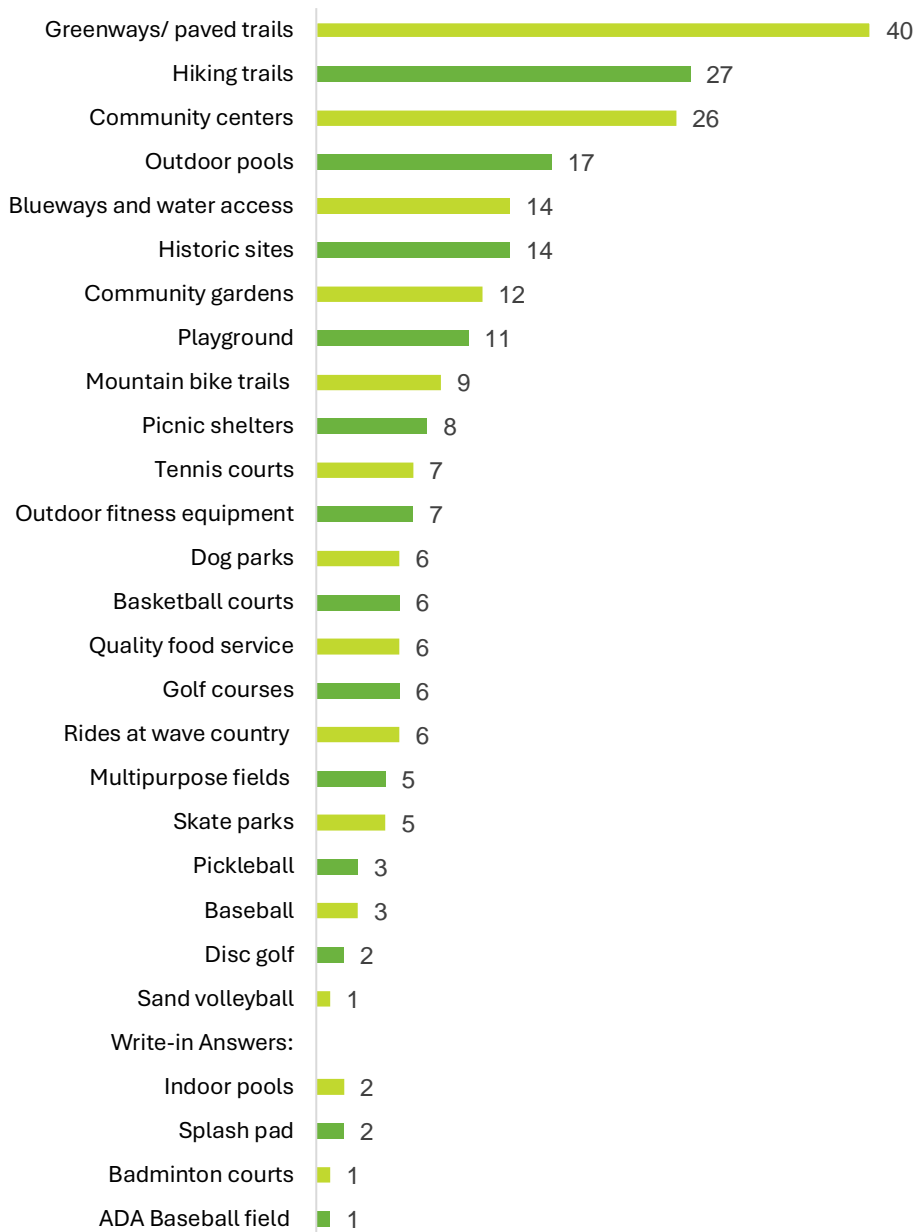
Station #2 - Land

This station asked the community to identify which types of spaces are most important to them or their households. Across all meetings, community members prioritized greenways (30%), large regional parks (25%), and small parks (22%) as the most important types of spaces.



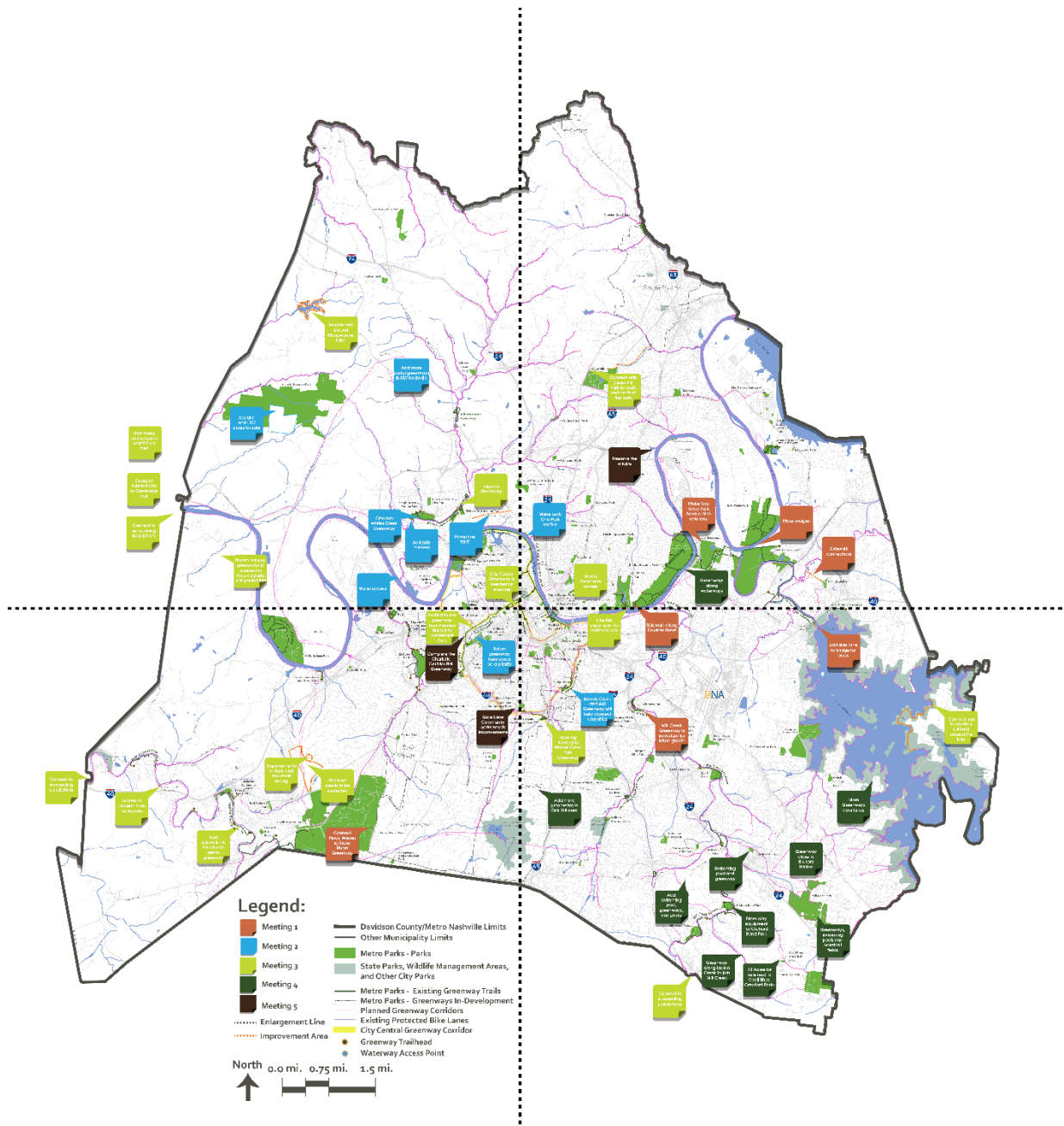
Station #3 – Facilities

This station asked community members to select the top three facilities most important to them. The most frequently chosen ones included greenways/paved trails, hiking trails, and community centers showing an interest in connecting to nature and community gathering spaces.



Station #4 - Greenways

This map offered community members the chance to give open-ended feedback on their favorite greenways, desired connections, and missing amenities like trails and water access. The feedback from the meetings was combined onto one single map below.



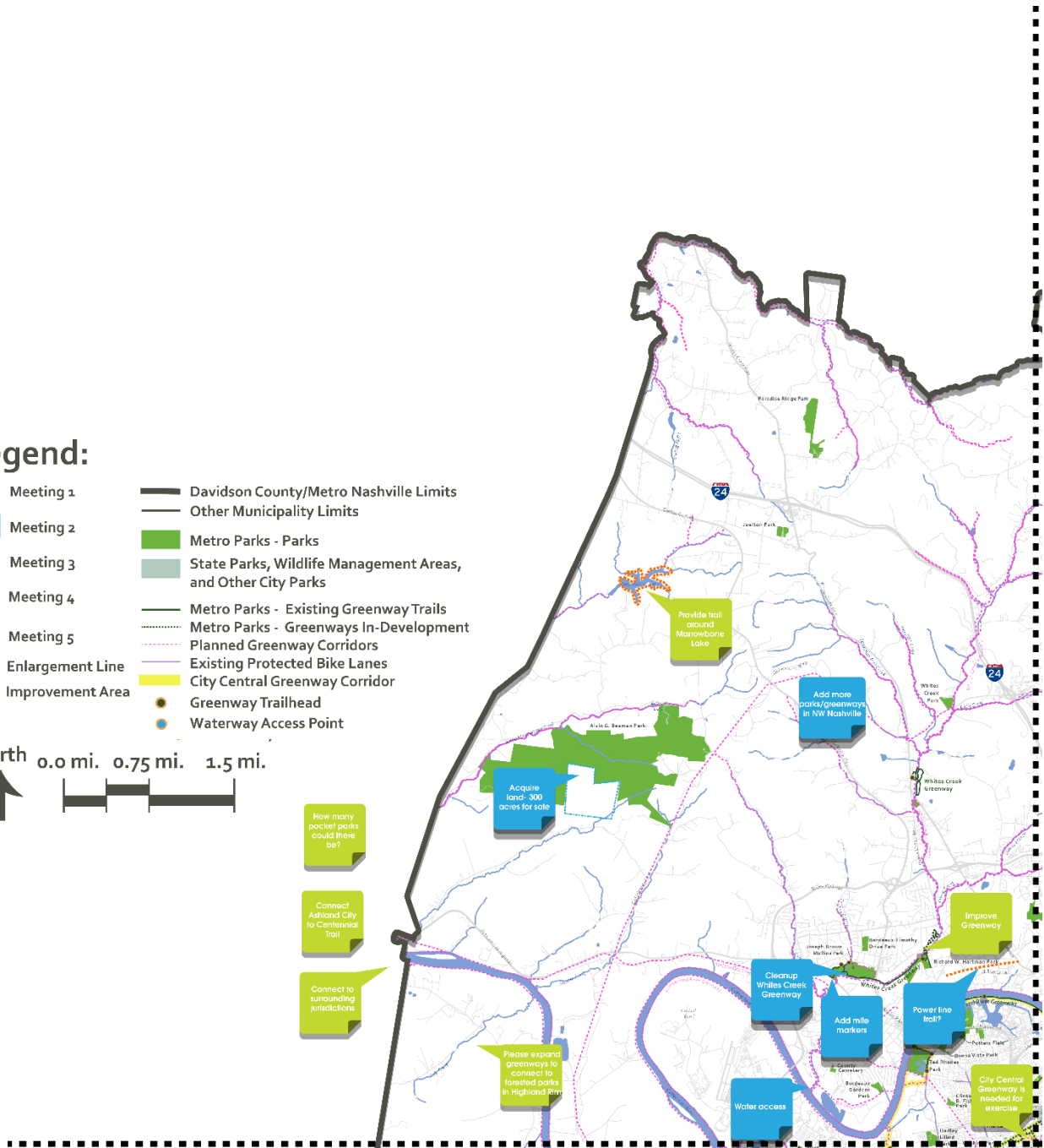
Northwest Nashville Feedback

Legend:

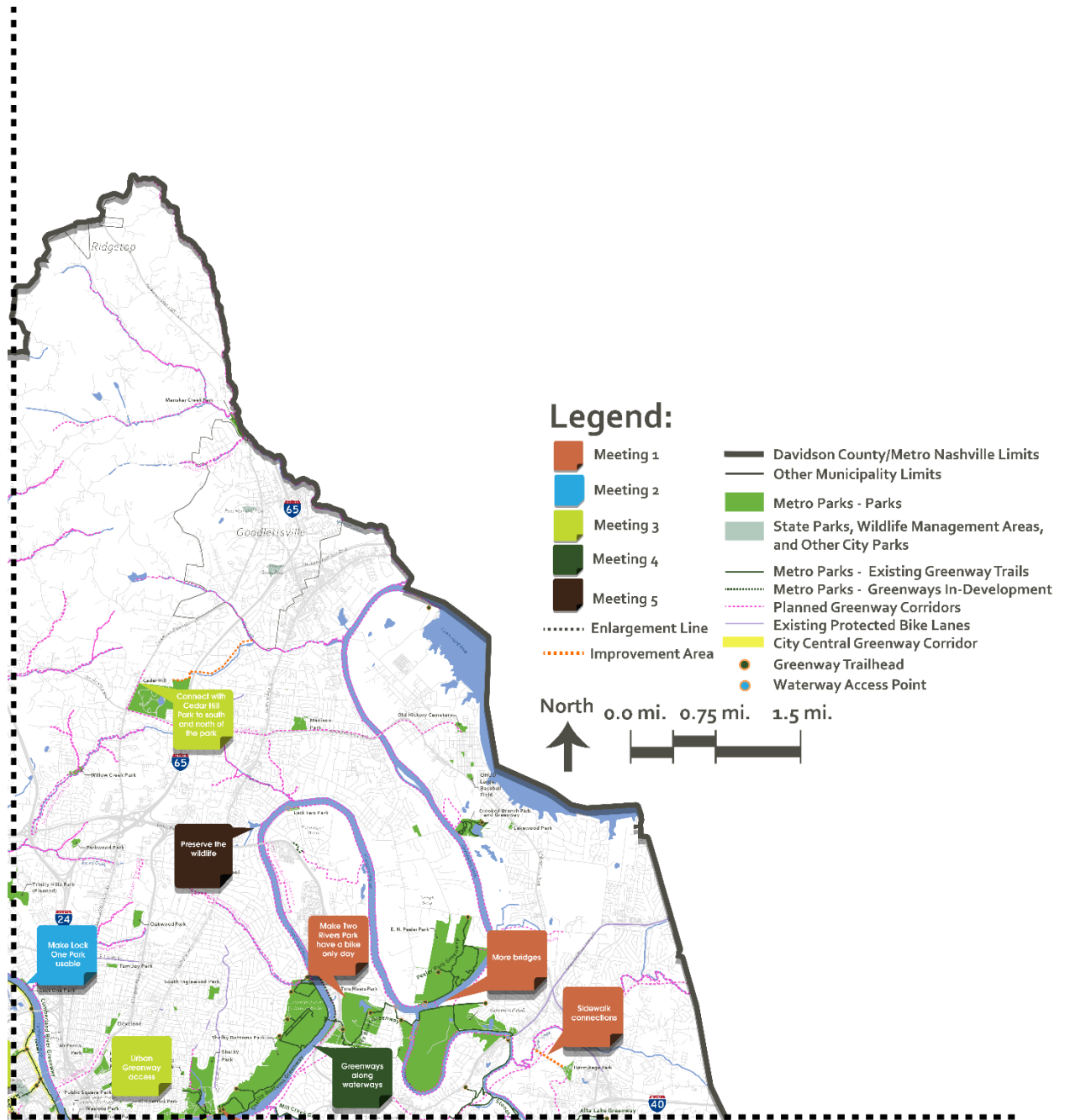
- Meeting 1
- Meeting 2
- Meeting 3
- Meeting 4
- Meeting 5
- Enlargement Line
- Improvement Area
- Davidson County/Metro Nashville Limits
- Other Municipality Limits
- Metro Parks - Parks
- State Parks, Wildlife Management Areas, and Other City Parks
- Metro Parks - Existing Greenway Trails
- Metro Parks - Greenways In-Development
- Planned Greenway Corridors
- Existing Protected Bike Lanes
- City Central Greenway Corridor
- Greenway Trailhead
- Waterway Access Point

North

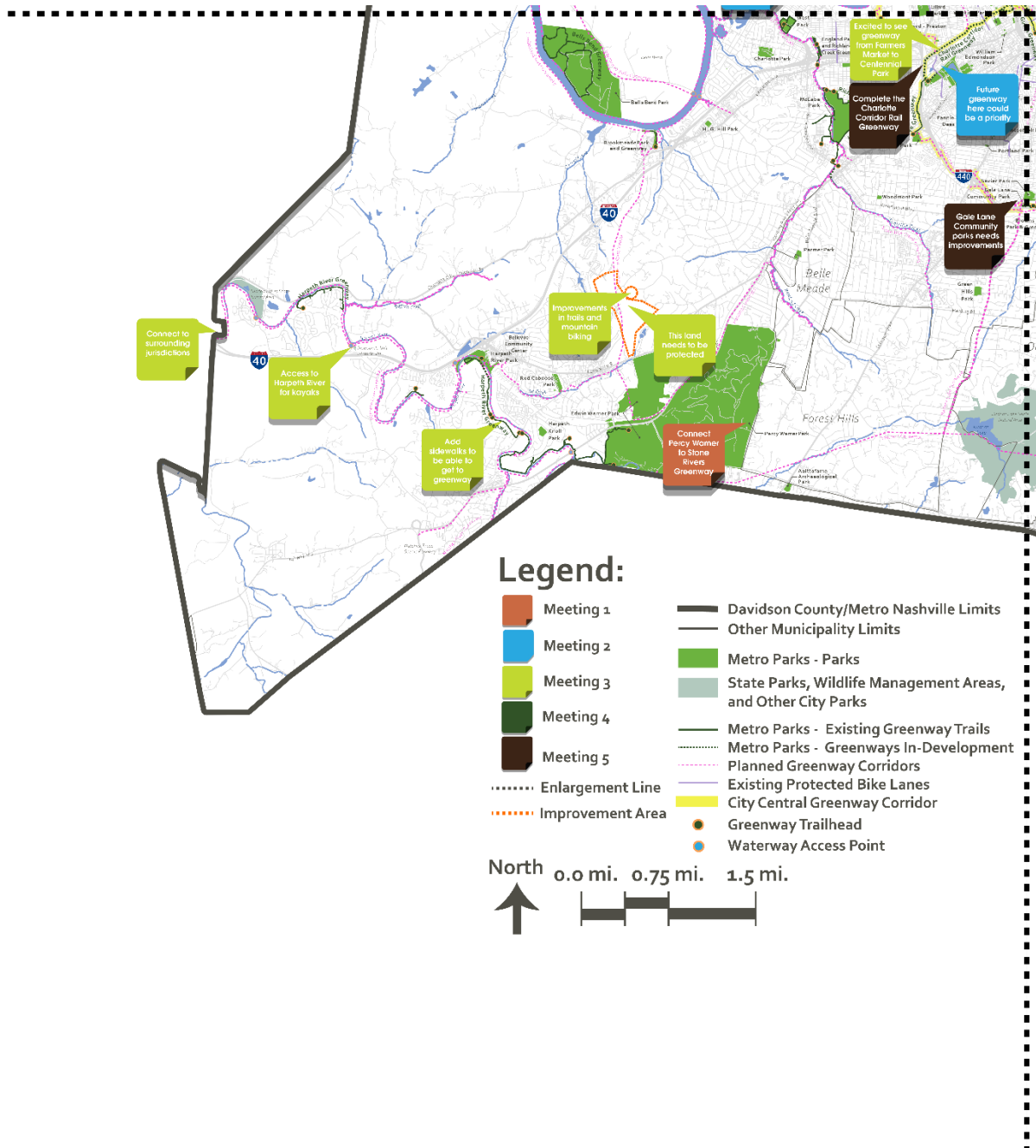
 0.0 mi. 0.75 mi. 1.5 mi.



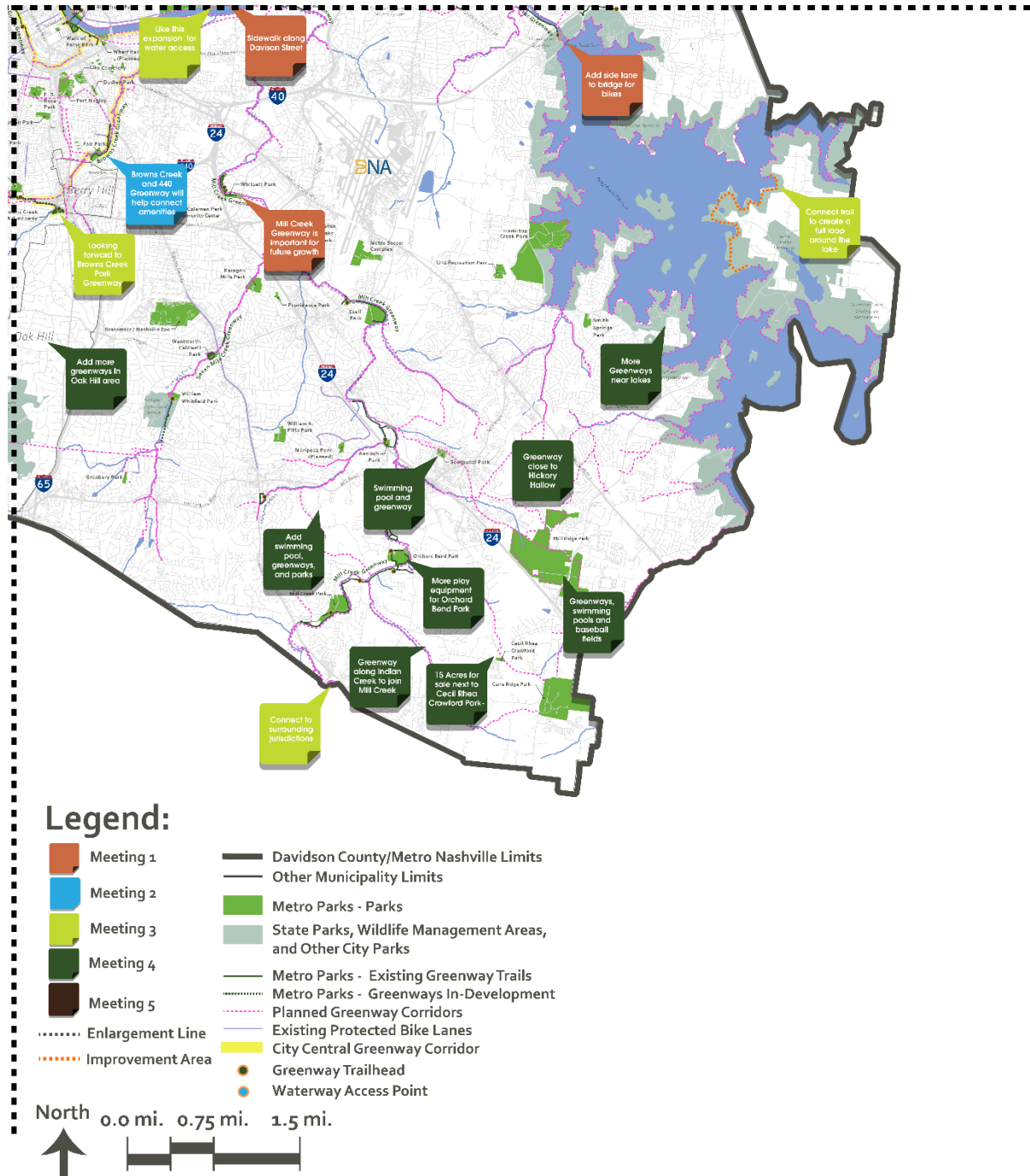
Northeast Nashville Feedback



Southwest Nashville Feedback

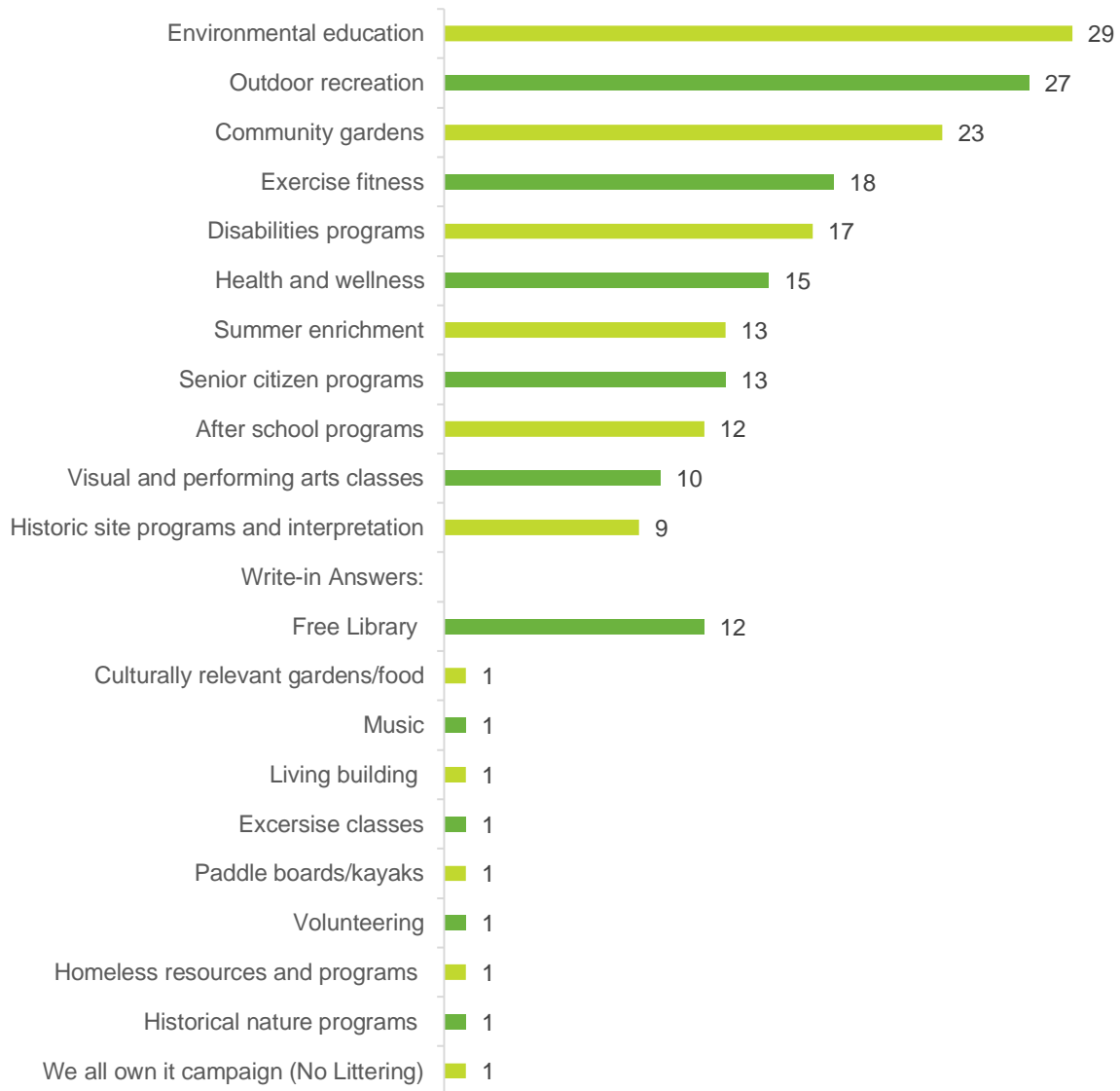


Southeast Nashville Feedback



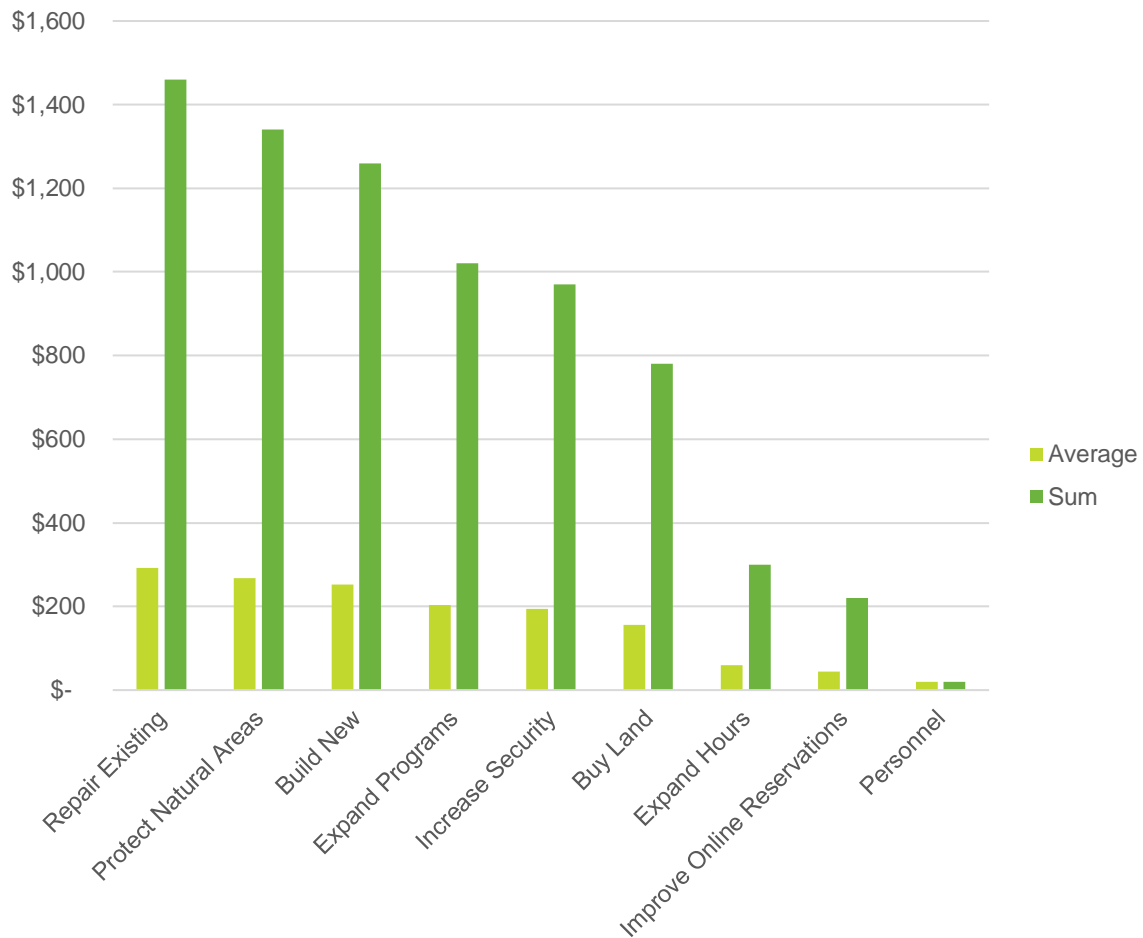
Station #5 – Programs

Community members were asked to select the top three programs they value most. The most prioritized programs included environmental education, outdoor recreation, and community gardens.



Station #6 – Funding and Operations

The community was asked how they would spend \$100 toward parks and greenways. The focus was on various categories and possible needs. The response showed great interest in repairing the already existing spaces and protecting natural areas.




Station #7 – Public Survey

The online survey station provided two tablets to community meeting participants in order to complete online surveys on site. The below board was displayed to allow use of a QR code to alternately access the online survey while attending. We also provided printed copies of the survey for those most comfortable with that format. The survey will remain open until July 31, 2025. Survey responses will be reported separately.


TELL US MORE!

Share the link and QR code with your friends and neighbors so they can share their input too!





PLAN TO play 2025 UPDATE
PARKS FOR EVERYONE

We have created an online survey with an interactive map to gather more detailed information. Please take some time to complete this survey!



Scan the QR code to complete a survey on your own device or complete a survey on one of the tablets here. If you have any questions, Metro Parks staff and the consultancy team are here to assist.

-  Scan the QR code with your phone
-  Complete online
<https://www.surveymonkey.com/r/MetroP2FU>

THANK YOU FOR SHARING YOUR THOUGHTS, IDEAS, AND CONCERNS!

Comment Cards

Additional comments were taken from each meeting.

- *"Please look to make money & time to protect & preserve the Highland Rim Forest! It is important for biodiversity, habitat and arguably most importantly - climate resilience. 100 billion gallons of rainfall on the forest each year."*
- *"Keep doing these events! Great way to engage the community!"*
- *"Since Nashville contains the largest urban forest in any city in the world, wondering if we can have an arboretum?"*
- *"Squash courts at West Park for a Squash Education Alliance Program. Currently Nashville has limited Squash courts (5 total). If Metro Parks can include new squash courts in the West Park rebuild it will open access to the sport for the people of Nashville! As an Olympic sport in 2028 this is the time for us to open a new West Park for a new sport in our city!"*