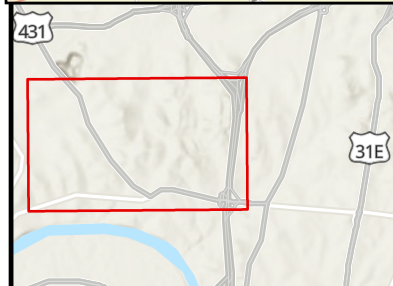


Council District #2
Councilwoman: Kyonzté Toombs

The project consists of the installation of approximately 7819 linear feet of 24-inch water main (DIP), 60 linear feet 12-inch water main (DIP), 628 linear feet of 8-inch water main (DIP), 316 linear feet of 6-inch water main (DIP) and 17 fire hydrants assemblies with associated fittings within the roadway.



24WC0011 - Whites Creek Transmission Main	
Esri, NASA, NGA, USGS, Esri Community Maps Contributors, Metro Nashville Gov't, Nashville Davidson Metro Govern, Esri, TomTom, Garmin, SafeGraph, GeoTechnologies, Inc, METI/NASA, USGS, EPA, NPS, US Census Bureau, USDA, USFWS, Esri, TomTom, Garmin, SafeGraph, METI/NASA, USGS, EPA, NPS, USDA, USFWS	2025
Coordinate System: NAD 1983 StatePlane Tennessee FIPS 4100 Feet	

