

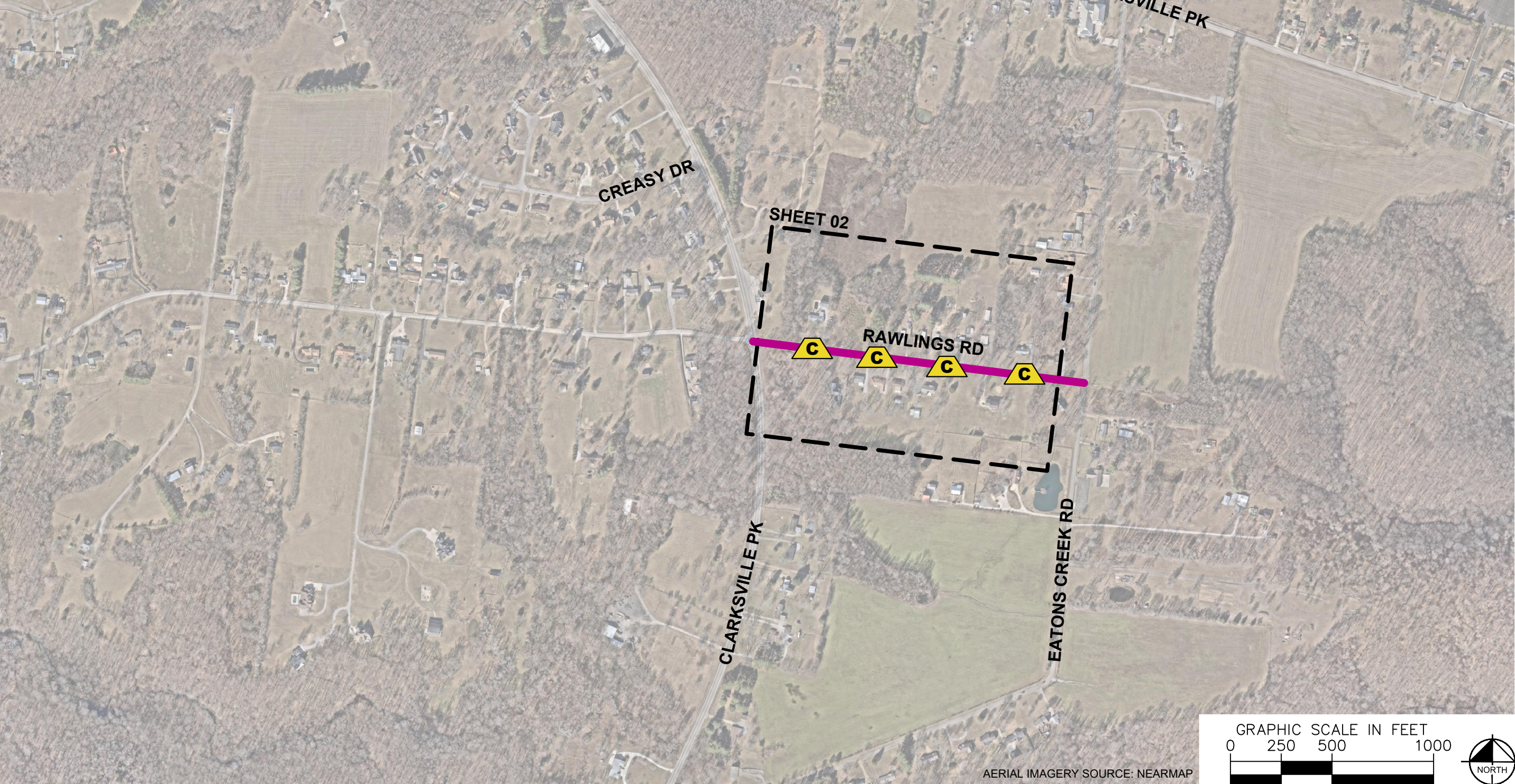


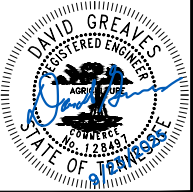
This document, together with the concepts and designs presented herein, is intended only for the specific purposes and client for which it was prepared. Reuse of and improper reliance on this document without written authorization and adaptation by Kimley-Horn and Associates, Inc. shall be without liability to Kimley-Horn and Associates, Inc.

ESTIMATED QUANTITIES	
SPEED CUSHIONS	
6' X 10.5' SPEED CUSHION WITH ONE ARROW	8
SIGNING	
W17-1 (VAR.) "SPEED CUSHIONS AHEAD" SIGN (30" X 30")	2
W13-1P "20 M.P.H" SIGN (18" X 18")	2
NOTE: ALL LOCATIONS ARE REFERENCED FROM CENTERLINE OF DRIVEWAYS OR OTHER LANDMARKS TO THE CENTER OF SPEED CUSHIONS OR SIGNS.	

LEGEND	
	LIMITS OF TRAFFIC CALMING PROJECT
	SPEED CUSHIONS



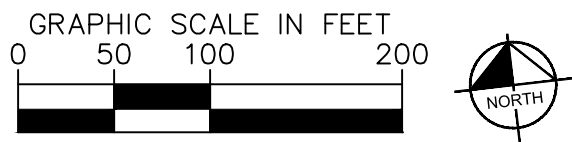
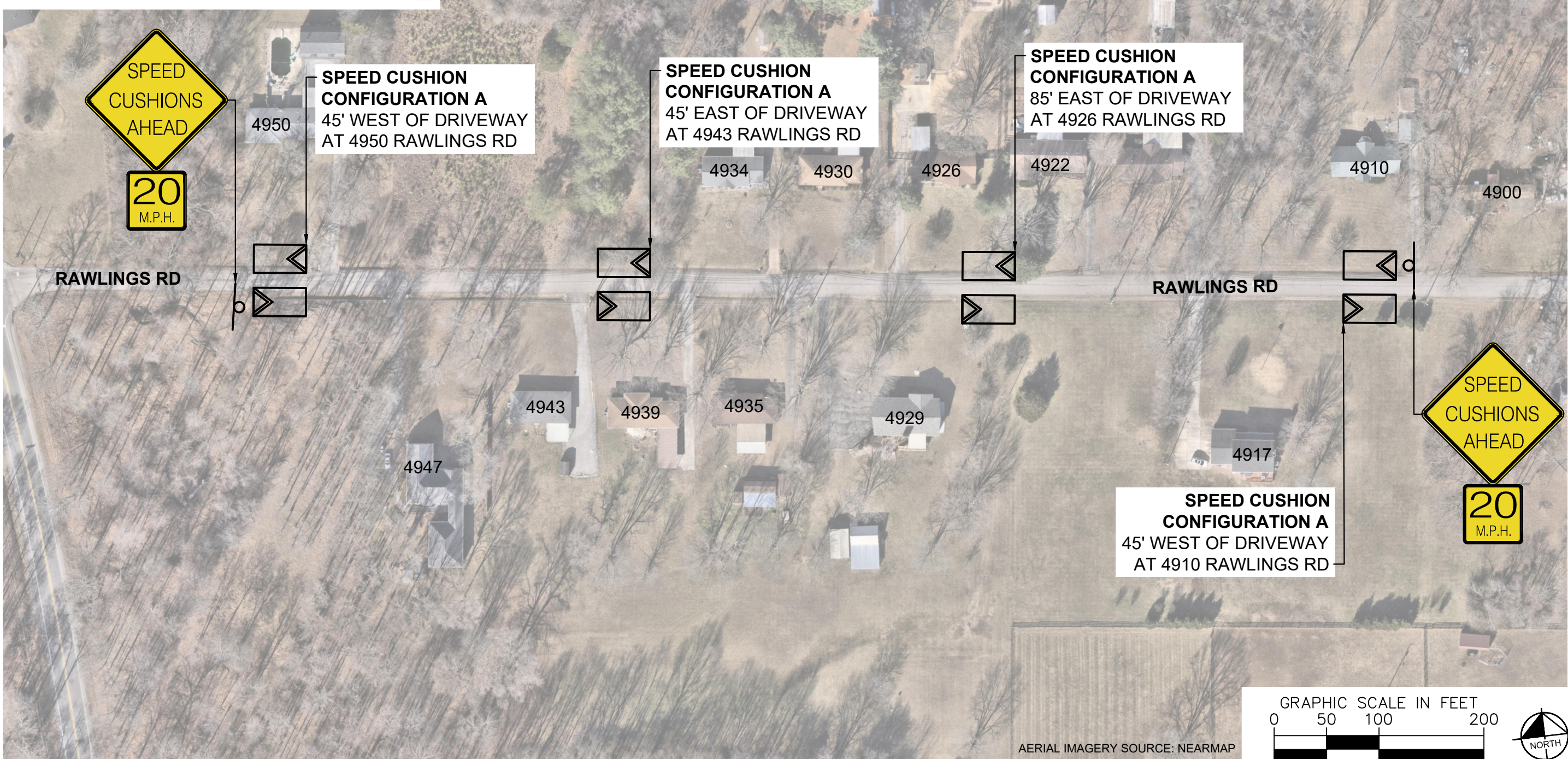
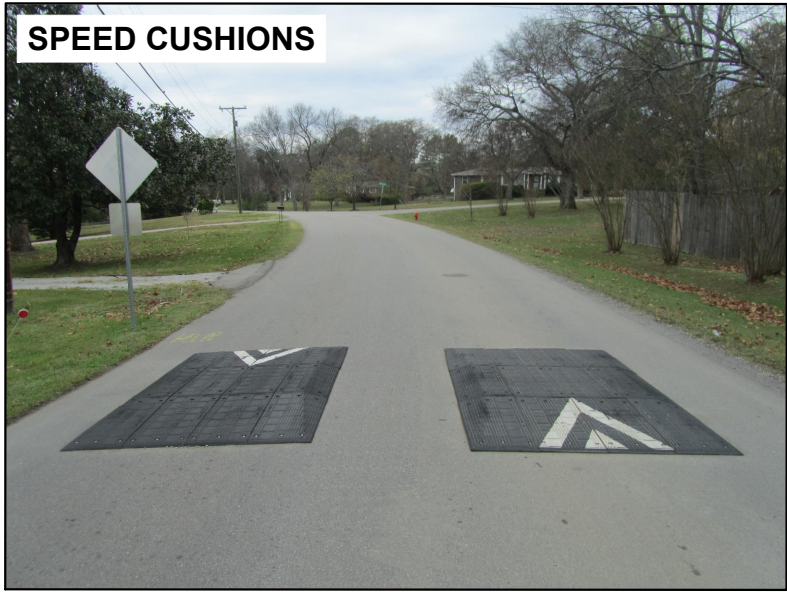
RAWLINGS ROAD
TRAFFIC CALMING
NASHVILLE, TN



DESIGNED BY:	KMZ
DRAWN BY:	KMZ
CHECKED BY:	NDOT
DATE:	9/23/2025
KIMLEY-HORN PROJECT NO. 118900066	

01-KEY
SHEET NUMBER
01

SPEED CUSHIONS



RAWLINGS ROAD
TRAFFIC CALMING
NASHVILLE, TN

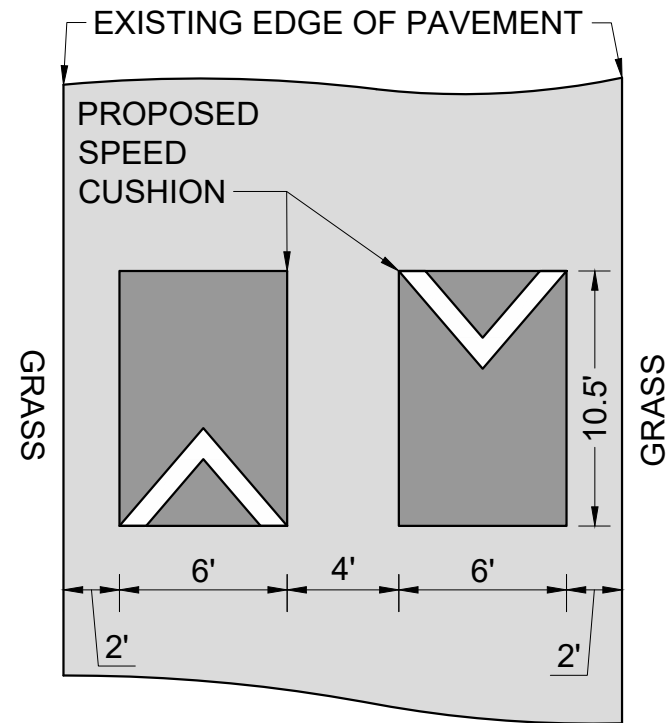


DESIGNED BY:	KMZ
DRAWN BY:	KMZ
CHECKED BY:	NDOT
DATE:	9/23/2025
KIMLEY-HORN PROJECT NO. 118900066	

CONCEPT

SHEET NUMBER
02

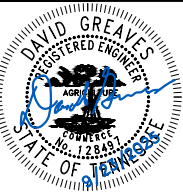
PAVEMENT WIDTH: 20'



This document, together with the concepts and designs presented herein, as an instrument of service, is intended only for the specific purpose and client for which it was prepared. Reuse of and improper reliance on this document without written authorization and adaptation by Kinley-Horn and Associates, Inc. shall be without liability to Kinley-Horn and Associates, Inc.



RAWLINGS ROAD TRAFFIC CALMING



DESIGNED BY:	KMZ
DRAWN BY:	KMZ
CHECKED BY:	NDOT
DATE:	9/23/2025
KIMLEY-HORN PROJECT NO. 118900066	

DETAIL

SHEET NUMBER
03