

This document, together with the concepts and designs presented herein, is intended only for the specific purpose and client for which it was prepared. Reuse of and improper reliance on this document without written authorization and adaptation by Kimley-Horn and Associates, Inc. shall be without liability to Kimley-Horn and Associates, Inc.

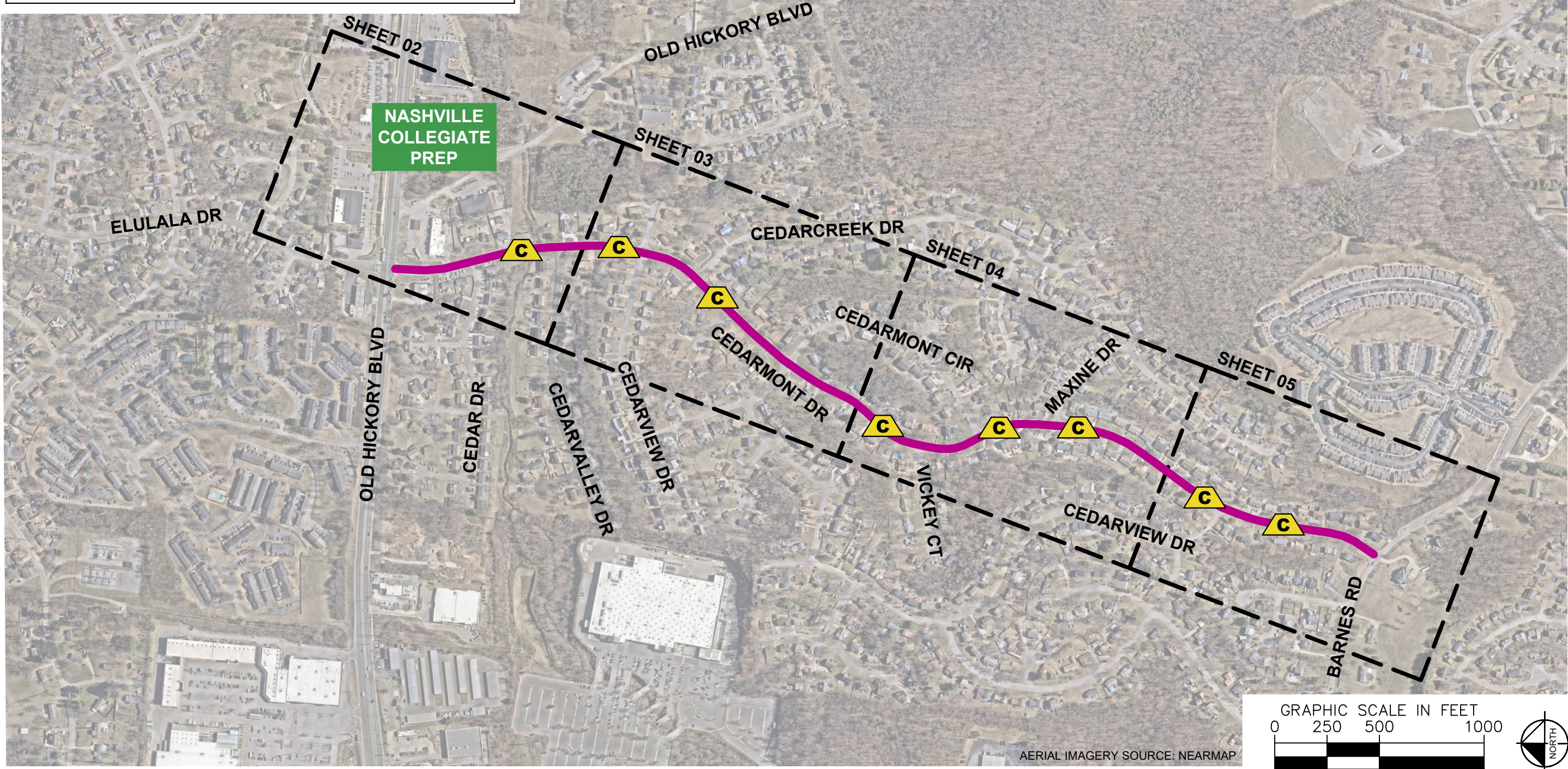
ESTIMATED QUANTITIES

SPEED CUSHIONS	
6' X 10.5' SPEED CUSHION WITH ONE ARROW	22
SIGNING	
W17-1 (VAR.) "SPEED CUSHION" SIGN (30" X 30")	16
W13-1P "20 M.P.H" SIGN (18" X 18")	16
PAVEMENT MARKINGS AND DELINEATORS	
4" WHITE FLEXIBLE DELINEATOR	40

NOTE: ALL LOCATIONS ARE REFERENCED FROM CENTERLINE OF DRIVEWAYS OR OTHER LANDMARKS TO THE CENTER OF SPEED CUSHIONS OR SIGNS.

LEGEND

- LIMITS OF TRAFFIC CALMING PROJECT
- SPEED CUSHIONS



NDOT

CEDARMONT DRIVE
TRAFFIC CALMING
NASHVILLE, TN

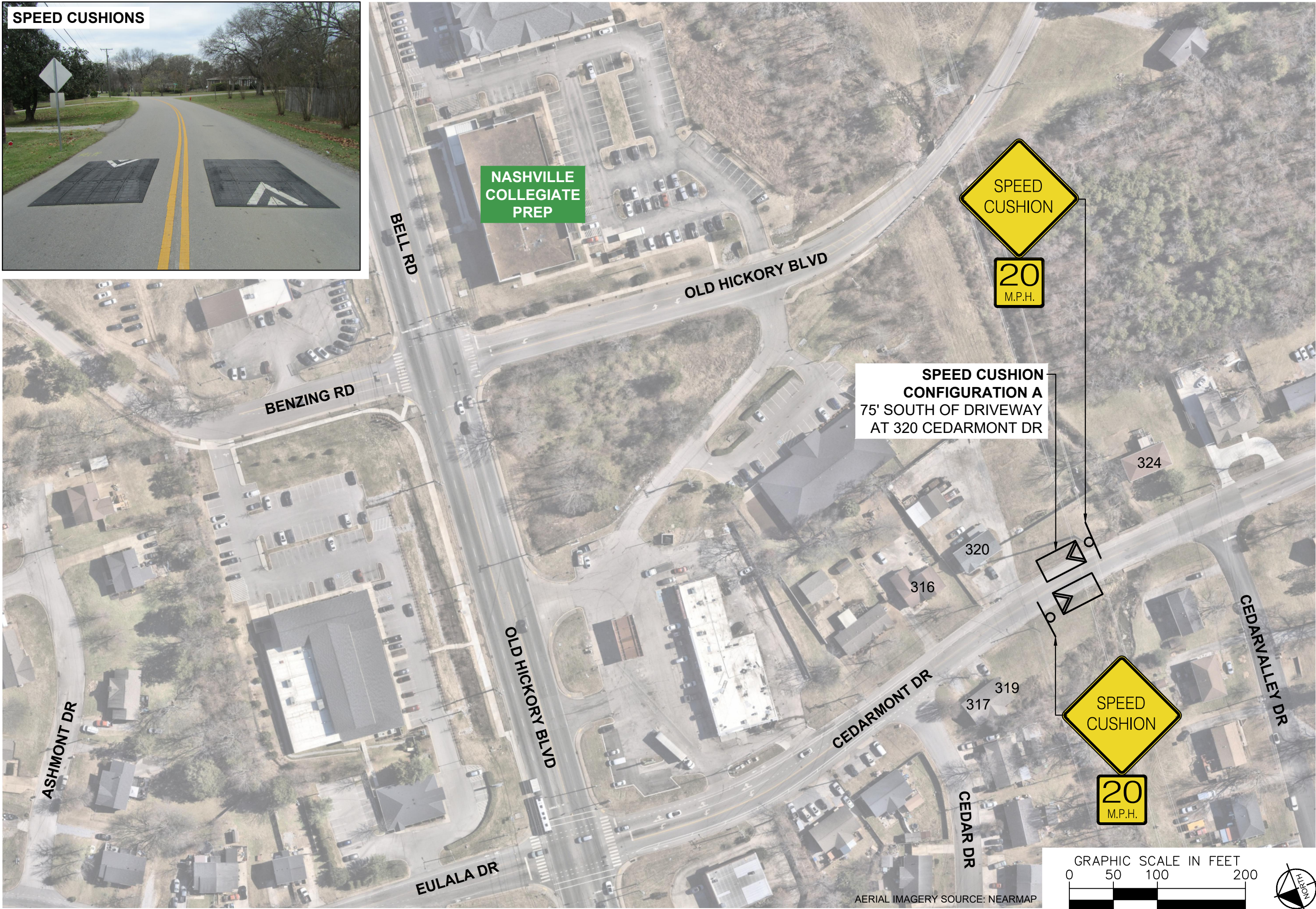
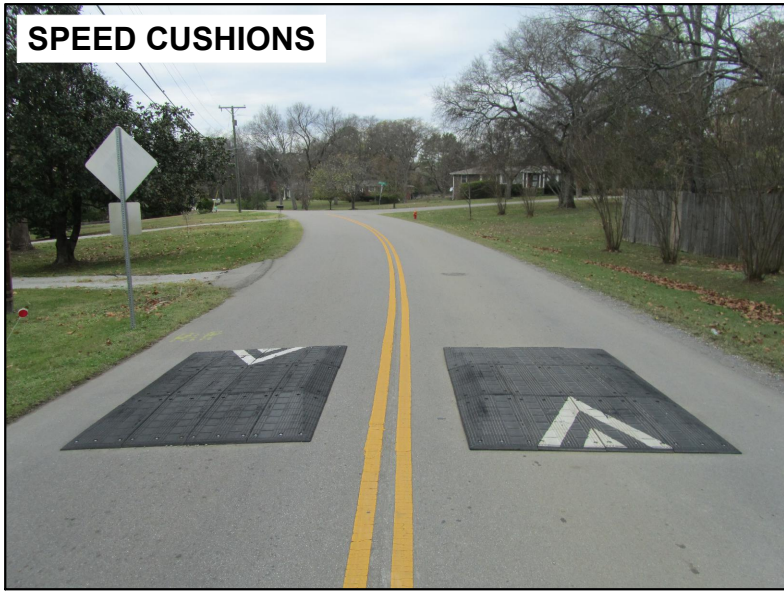


DESIGNED BY:	JLH
DRAWN BY:	HXW
CHECKED BY:	NDOT
DATE:	9/29/2025
KIMLEY-HORN PROJECT NO. 118900066	

KEY

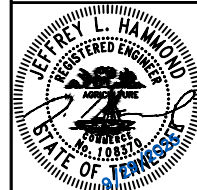
SHEET NUMBER
01

SPEED CUSHIONS



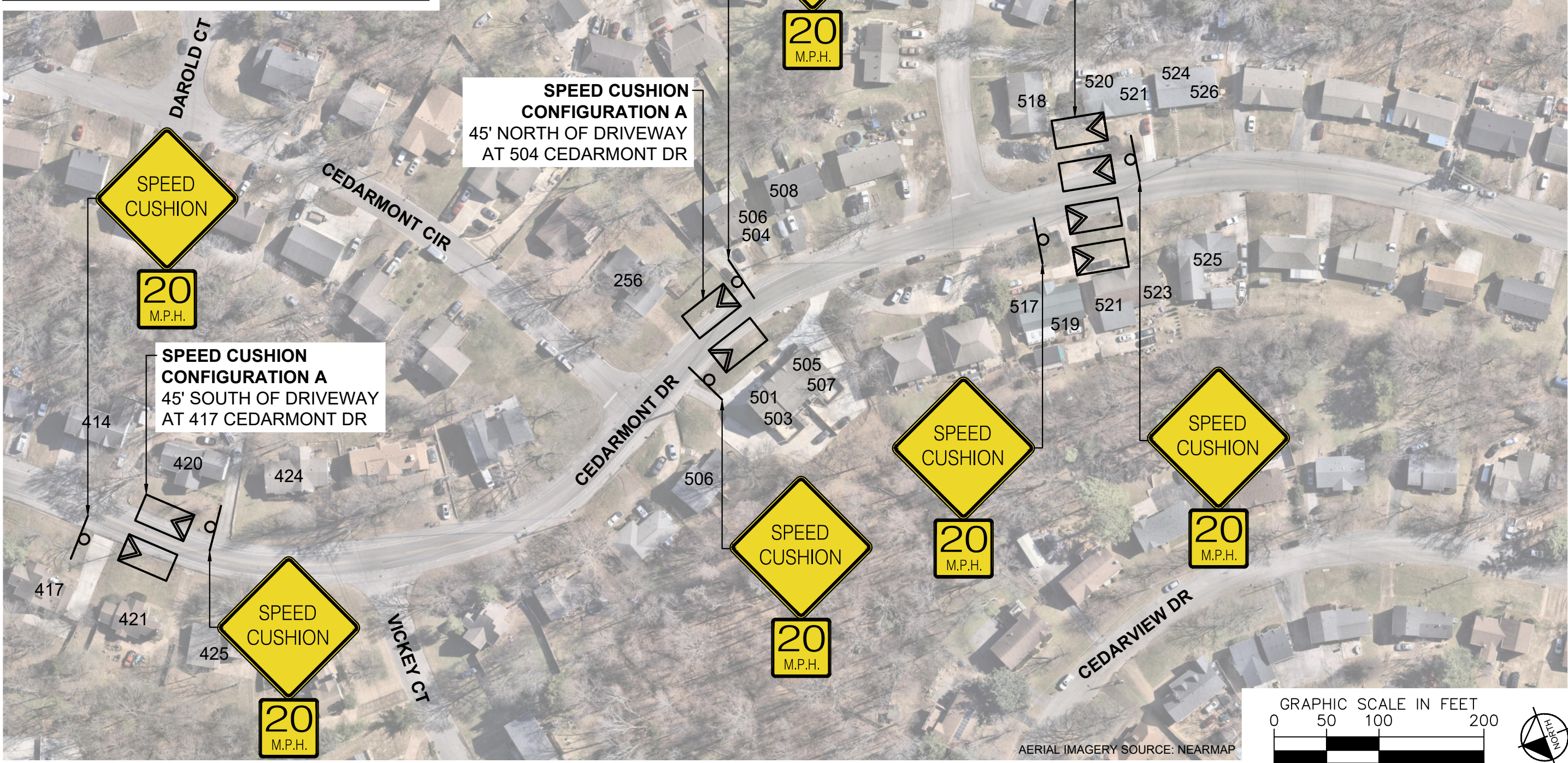
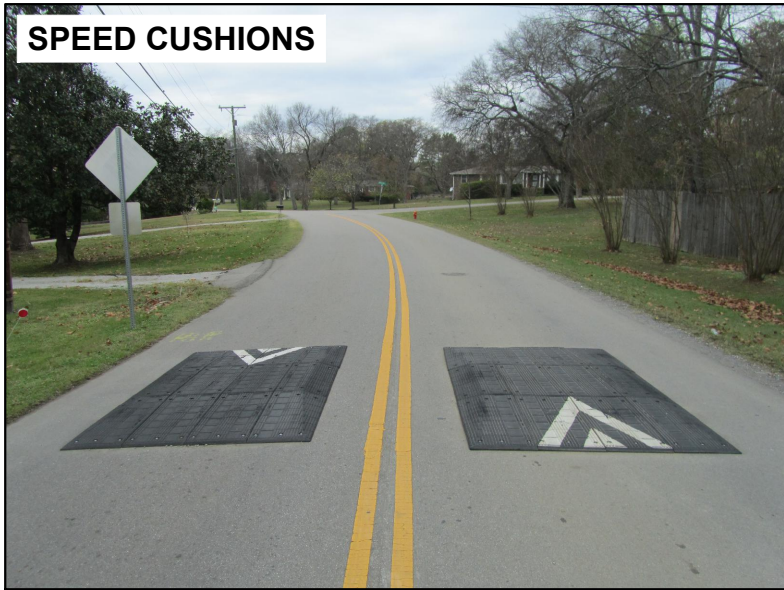
NDOT

CEDARMONT DRIVE
TRAFFIC CALMING
NASHVILLE, TN



DESIGNED BY:	JLH
DRAWN BY:	HXW
CHECKED BY:	NDOT
DATE:	9/29/2025
KIMLEY-HORN PROJECT NO.	118900066

CONCEPT
SHEET NUMBER
02



SPEED CUSHIONS

**SPEED CUSHION
CONFIGURATION A**
45' NORTH OF DRIVEWAY
AT 504 CEDARMONT DR

**SPEED CUSHION
CONFIGURATION B**
31' NORTH OF PARKING PAD
AT 523 CEDARMONT DR

**SPEED CUSHION
CONFIGURATION A**
45' SOUTH OF DRIVEWAY
AT 417 CEDARMONT DR



NDOT

**CEDARMONT DRIVE
TRAFFIC CALMING**

NASHVILLE, TN



JEFFREY L. HAMMOND
REGISTERED ENGINEER
STATE OF TENNESSEE
LICENSE NO. 10850



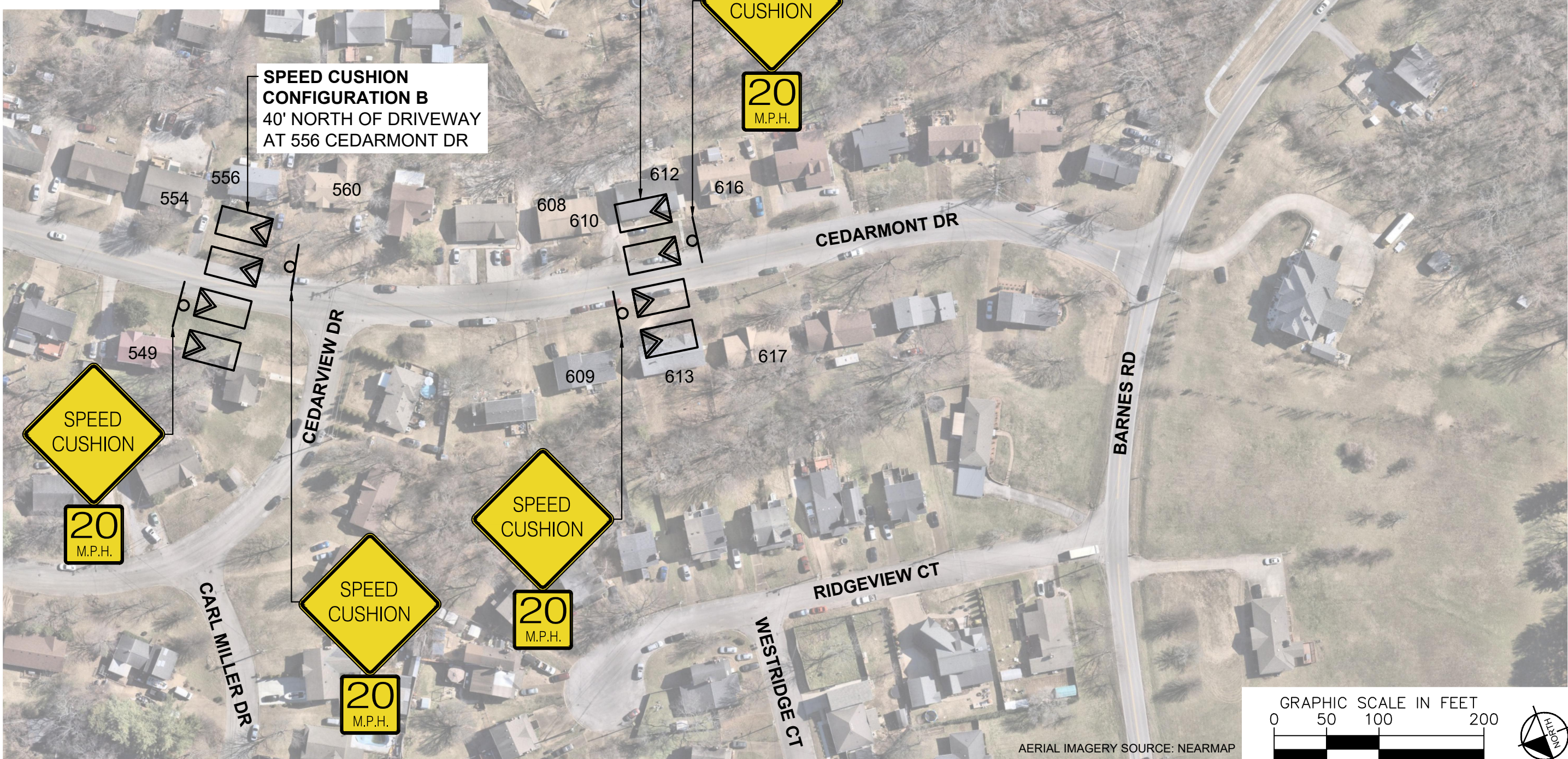
BURCH
TRANSPORTATION

DESIGNED BY:	JLH
DRAWN BY:	HXW
CHECKED BY:	NDOT
DATE:	9/29/2025
KIMLEY-HORN PROJECT NO. 118900066	

CONCEPT

SHEET NUMBER
04

This document, together with the concepts and designs presented herein, is intended only for the specific purpose and client for which it was prepared. Reuse of and improper reliance on this document without written authorization and adaptation by Kimley-Horn and Associates, Inc. shall be without liability to Kimley-Horn and Associates, Inc.



This document, together with the concepts and designs presented herein, is intended only for the specific purpose and client for which it was prepared. Reuse of and improper reliance on this document without written authorization and adaptation by Kimley-Horn and Associates, Inc. shall be without liability to Kimley-Horn and Associates, Inc.

CEDARMONT DRIVE
TRAFFIC CALMING
NASHVILLE, TN

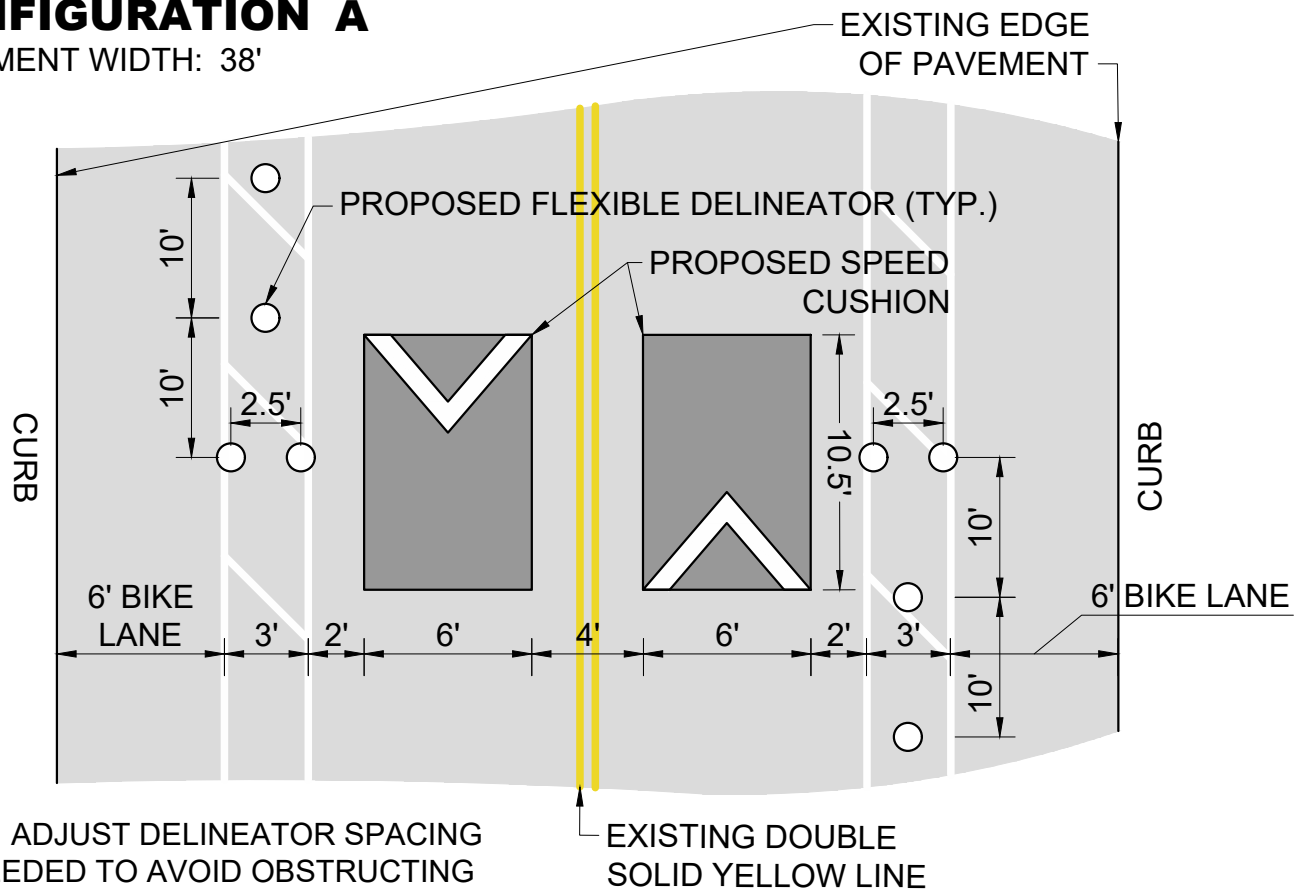
DESIGNED BY:	JLH
DRAWN BY:	HXW
CHECKED BY:	NDOT
DATE:	9/29/2025
KIMLEY-HORN PROJECT NO. 118900066	

CONCEPT

SHEET NUMBER
05

CONFIGURATION A

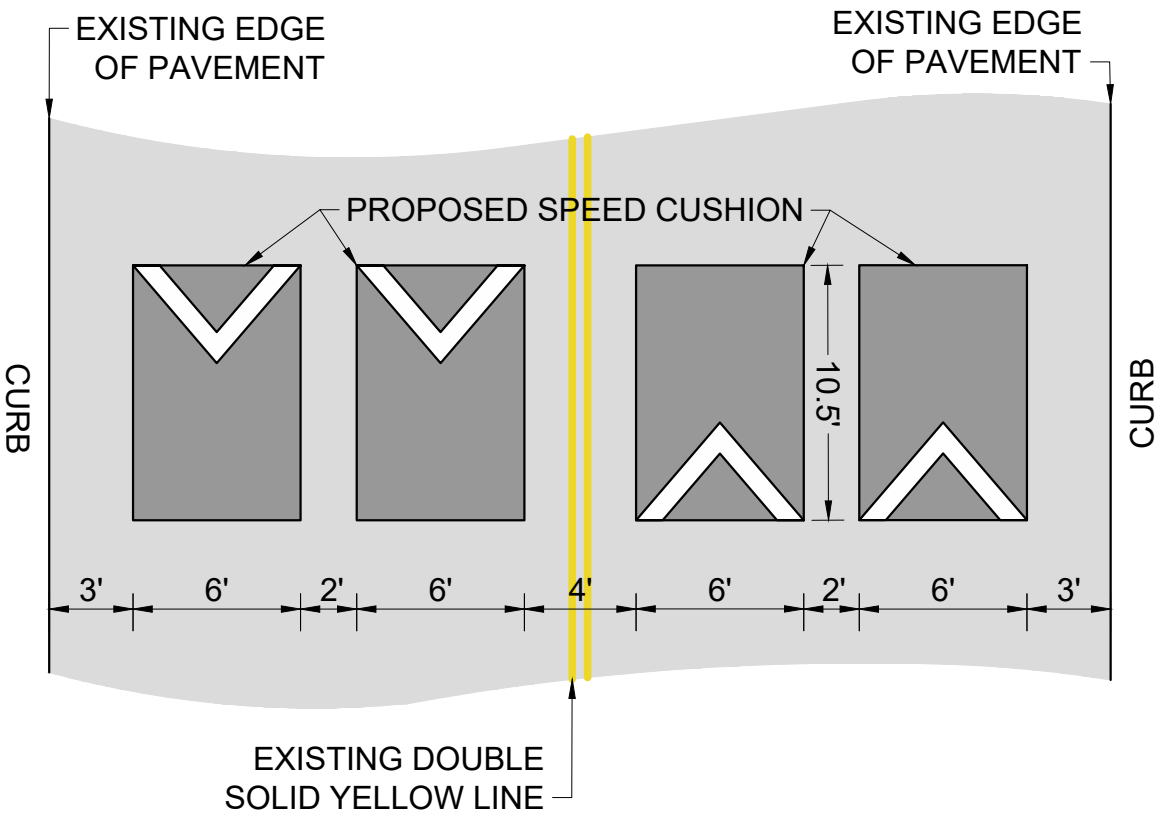
PAVEMENT WIDTH: 38'



NOTE: ADJUST DELINEATOR SPACING AS NEEDED TO AVOID OBSTRUCTING DRIVEWAYS AND MAILBOXES.

CONFIGURATION B

PAVEMENT WIDTH: 38'



CEDARMONT DRIVE
TRAFFIC CALMING
NASHVILLE, TN



DESIGNED BY:	JLH
DRAWN BY:	HXW
CHECKED BY:	NDOT
DATE:	9/29/2025
KIMLEY-HORN PROJECT NO.	118900066

DETAIL

SHEET NUMBER
06