




This document, together with the concepts and designs presented herein, is intended only for the specific purposes and client for which it was prepared. Reuse of and improper reliance on this document without written authorization and adaptation by Kimley-Horn and Associates, Inc. shall be without liability to Kimley-Horn and Associates, Inc.

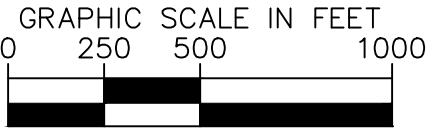
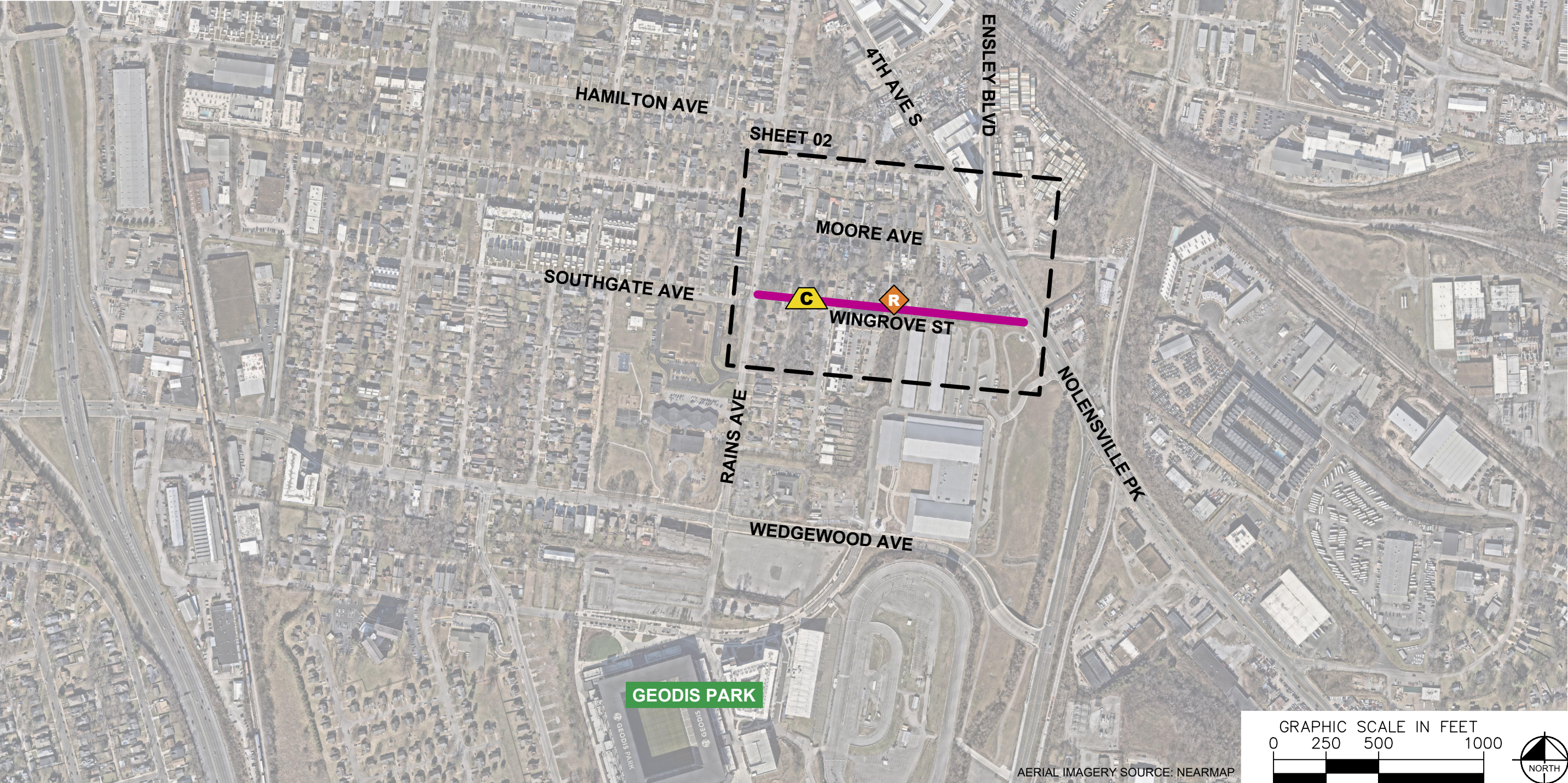
ESTIMATED QUANTITIES

SPEED CUSHIONS	
6' X 7' SPEED CUSHION WITH ONE ARROW	2
SIGNING	
W17-1 (VAR.) "SPEED CUSHION" SIGN (30" X 30")	2
W13-1P "20 M.P.H" SIGN (18" X 18")	2
RADAR FEEDBACK SIGN	1

NOTE: ALL LOCATIONS ARE REFERENCED FROM CENTERLINE OF DRIVEWAYS OR OTHER LANDMARKS TO THE CENTER OF SPEED CUSHIONS OR SIGNS.

LEGEND

-  LIMITS OF TRAFFIC CALMING PROJECT
-  SPEED CUSHIONS
-  RADAR FEEDBACK SIGN



NDOT

WINGROVE STREET
TRAFFIC CALMING
NASHVILLE, TN

DRAFT
PRELIMINARY
PLANS
FOR REVIEW ONLY
10/21/2025



DESIGNED BY: JLH
DRAWN BY: KMZ
CHECKED BY: NDOT
DATE: 10/2/2025
KIMLEY-HORN PROJECT NO. 118900066

KEY

SHEET NUMBER
01

This document, together with the concepts and designs presented herein, is intended only for the specific purposes and client for which it was prepared. Reuse of and improper reliance on this document without written authorization and adaptation by Kimley-Horn and Associates, Inc. shall be without liability to Kimley-Horn and Associates, Inc.



SPEED CUSHIONS

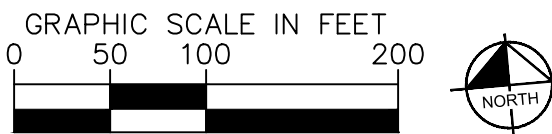


RADAR FEEDBACK SIGN



**SPEED CUSHION
CONFIGURATION A**
24' EAST OF DRIVEWAY
AT 442 WINGROVE ST

RADAR FEEDBACK SIGN
18' WEST OF DRIVEWAY AT 426
WINGROVE ST, FACING EAST
(FOR WESTBOUND TRAFFIC)





WINGROVE STREET
TRAFFIC CALMING
NASHVILLE, TN

DRAFT
**PRELIMINARY
PLANS**
FOR REVIEW ONLY
10/21/2025



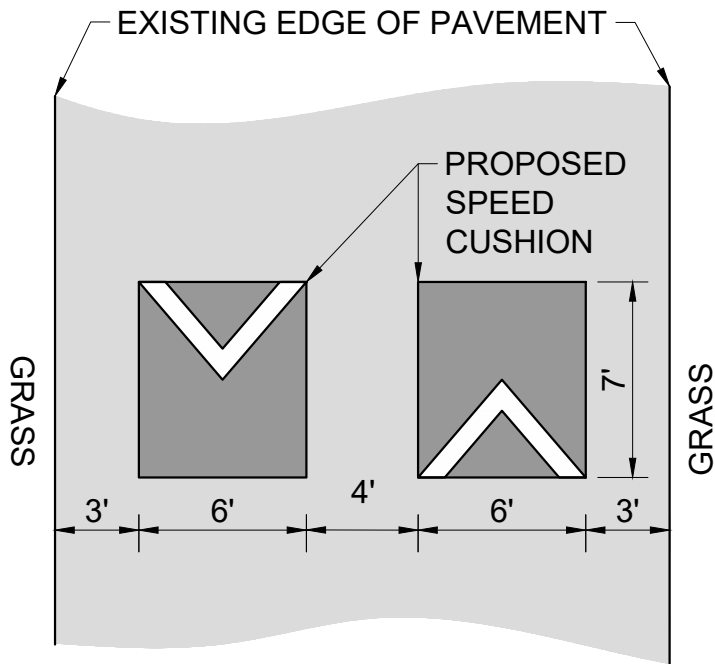
DESIGNED BY: JLH
DRAWN BY: KMZ
CHECKED BY: NDOT
DATE: 10/2/2025
KIMLEY-HORN PROJECT NO. 118900066

CONCEPT
SHEET NUMBER
02

This document, together with the concepts and designs presented herein, is intended only for the specific purpose and client for which it was prepared. Reuse of and improper reliance on this document without written authorization and adaptation by Kimley-Horn and Associates, Inc. shall be without liability to Kimley-Horn and Associates, Inc.

CONFIGURATION A

PAVEMENT WIDTH: 22'



WINGROVE STREET
TRAFFIC CALMING
NASHVILLE, TN

DRAFT
PRELIMINARY
PLANS
FOR REVIEW ONLY
10/2/2025



DESIGNED BY: JLH
DRAWN BY: KMZ
CHECKED BY: NDOT
DATE: 10/2/2025
KIMLEY-HORN PROJECT NO.
118900066

DETAIL

SHEET NUMBER
03