

This document, together with the concepts and designs presented herein, as an instrument of service, is intended only for the specific purposes and client for which it was prepared. Reuse of and improper reliance on this document without written authorization and adaptation by Kimley-Horn and Associates, Inc. shall be without liability to Kimley-Horn and Associates, Inc.

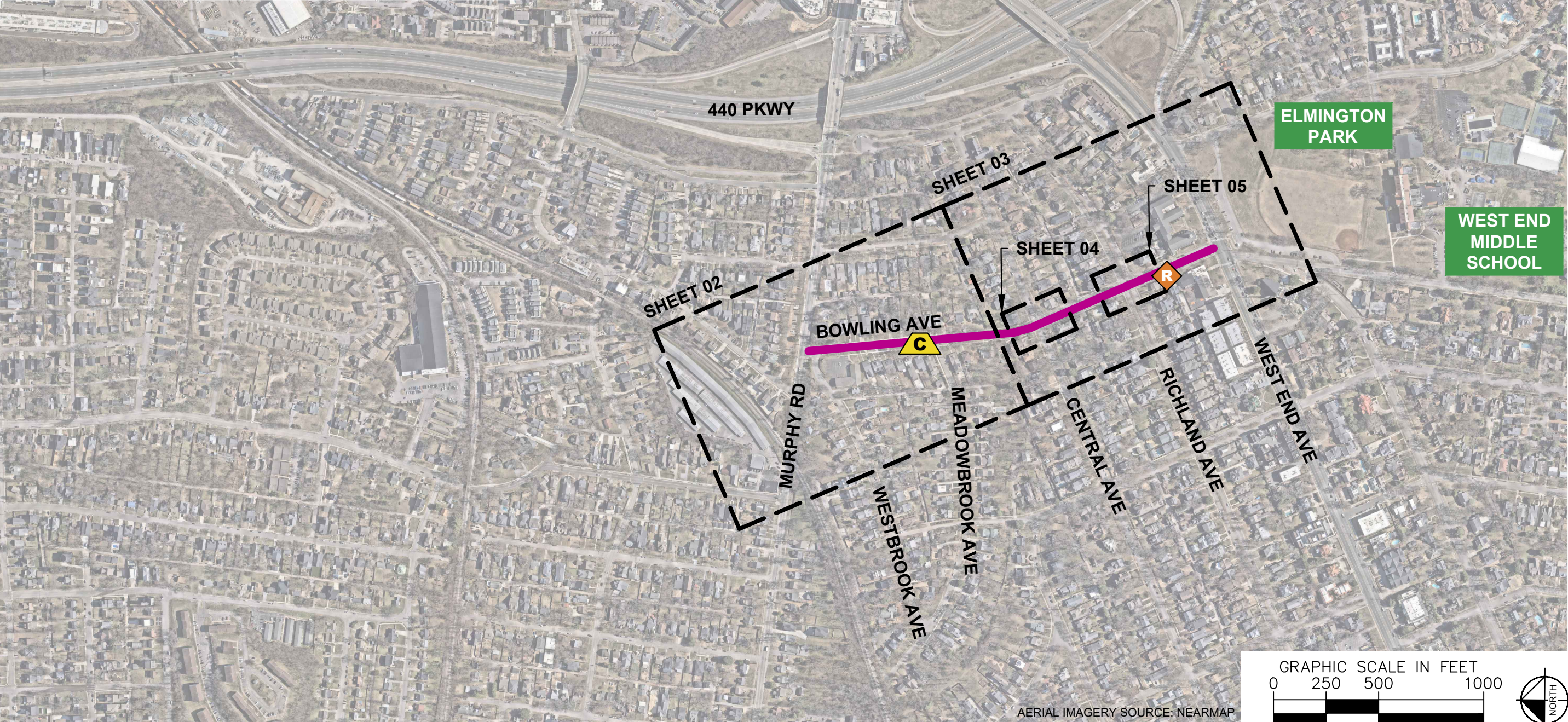
ESTIMATED QUANTITIES

SPEED CUSHIONS	
6' X 7' SPEED CUSHION WITH ONE ARROW	2
SIGNING	
W17-1 (VAR.) "SPEED CUSHION" SIGN (30" X 30")	2
W13-1P "20 M.P.H" SIGN (18" X 18")	2
SCHOOL FLASHER ASSEMBLY	1
PAVEMENT MARKINGS AND DELINEATORS	
24" SOLID WHITE LINE (LF)	630

NOTE: ALL LOCATIONS ARE REFERENCED FROM CENTERLINE OF DRIVEWAYS OR OTHER LANDMARKS TO THE CENTER OF SPEED CUSHIONS OR SIGNS.

LEGEND

- LIMITS OF TRAFFIC CALMING PROJECT
- SPEED CUSHIONS
- SCHOOL FLASHER ASSEMBLY



NDOT

BOWLING AVENUE
TRAFFIC CALMING
NASHVILLE, TN

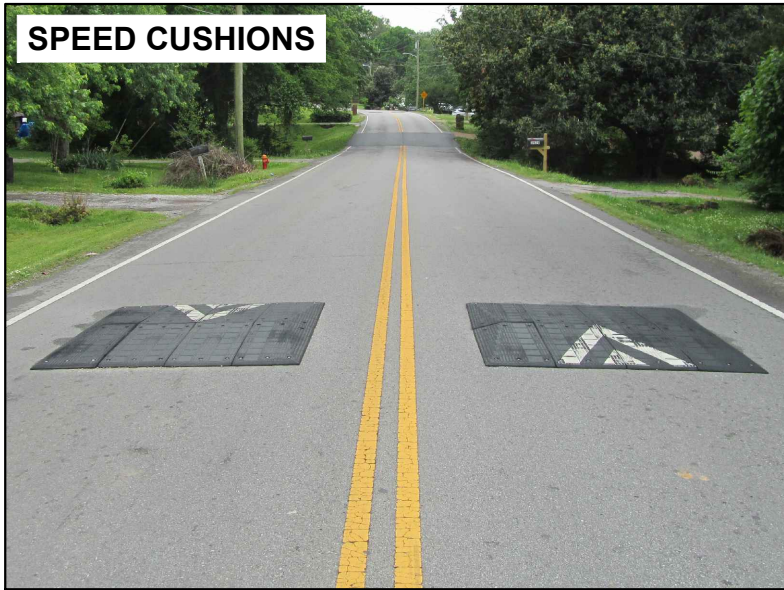
DRAFT
PRELIMINARY
PLANS
FOR REVIEW ONLY
10/9/2025

BURCH
TRANSPORTATION

DESIGNED BY: JLH
DRAWN BY: KMZ
CHECKED BY: NDOT
DATE: 10/9/2025
KIMLEY-HORN PROJECT NO. 118900066

KEY

SHEET NUMBER
01



BOWLING AVENUE
TRAFFIC CALMING
NASHVILLE, TN

DRAFT
PRELIMINARY
PLANS
FOR REVIEW ONLY
10/9/2025

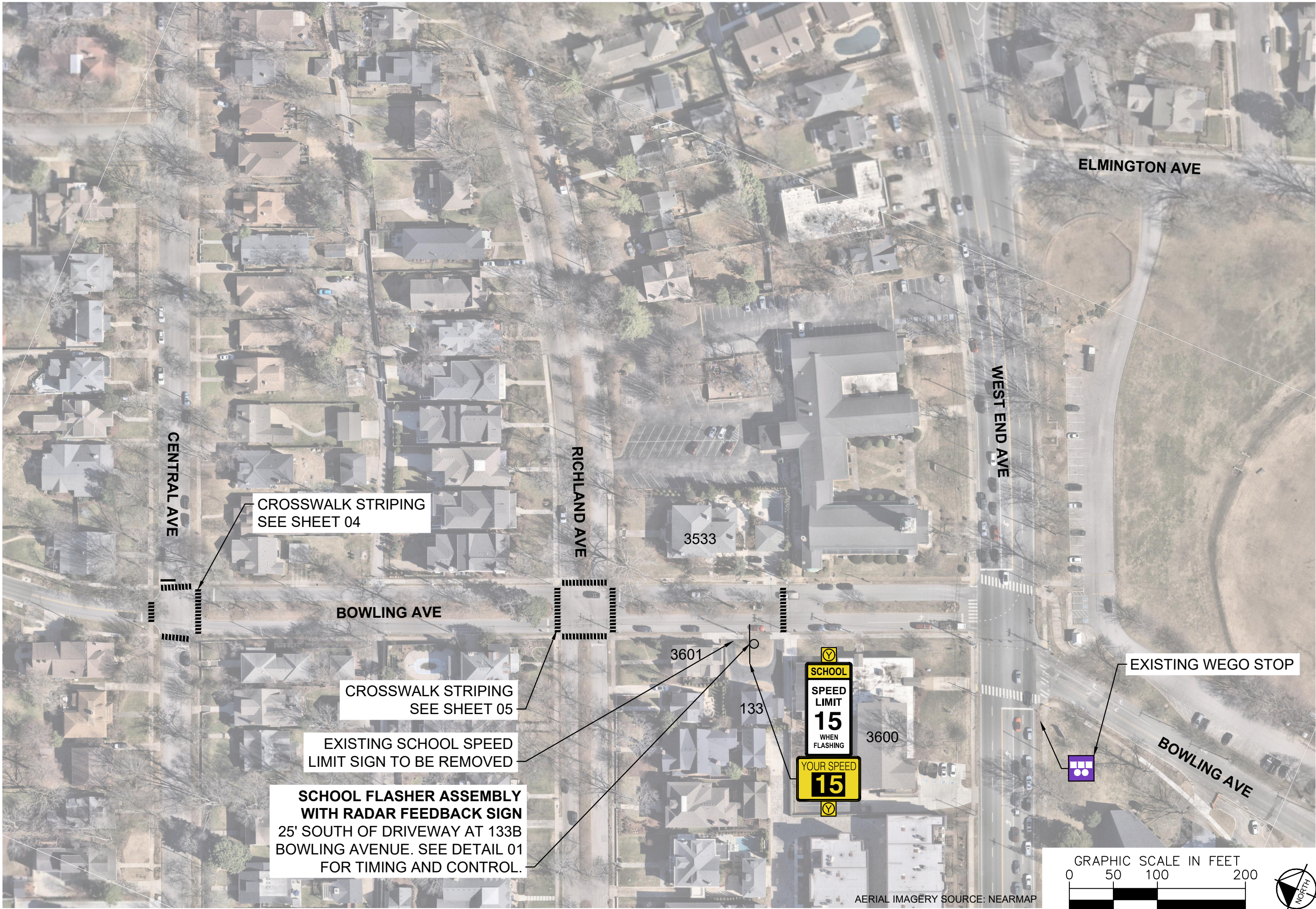


DESIGNED BY:	JLH
DRAWN BY:	KMZ
CHECKED BY:	NDOT
DATE:	10/9/2025
KIMLEY-HORN PROJECT NO.	11890006

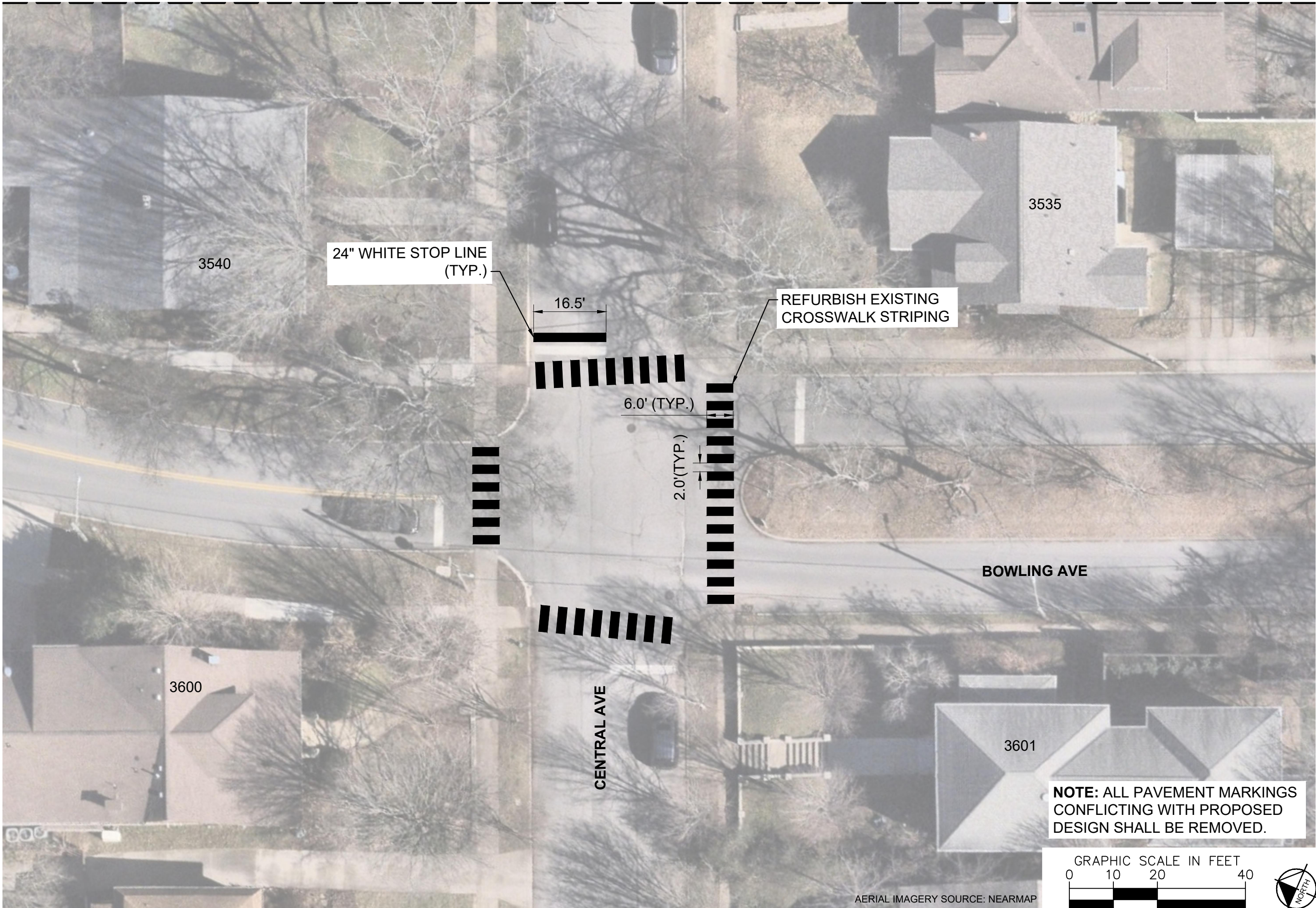
CONCEPT
SHEET NUMBER
02

This document, together with the concepts and designs presented herein, is intended only for the specific purpose and client for which it was prepared. Reuse of and improper reliance on this document without written authorization and adaptation by Kimley-Horn and Associates, Inc. shall be without liability to Kimley-Horn and Associates, Inc.

This document, together with the concepts and designs presented herein, is intended only for the specific purpose and client for which it was prepared. Reuse of and improper reliance on this document without written authorization and adaptation by Kimley-Horn and Associates, Inc. shall be without liability to Kimley-Horn and Associates, Inc.



This document, together with the concepts and designs presented herein, is intended only for the specific purpose and client for which it was prepared. Reuse of and improper reliance on this document without written authorization and adaptation by Kimley-Horn and Associates, Inc. shall be without liability to Kimley-Horn and Associates, Inc.



NDOT

BOWLING AVENUE
TRAFFIC CALMING
NASHVILLE, TN

DRAFT
PRELIMINARY
PLANS
FOR REVIEW ONLY
10/9/2025

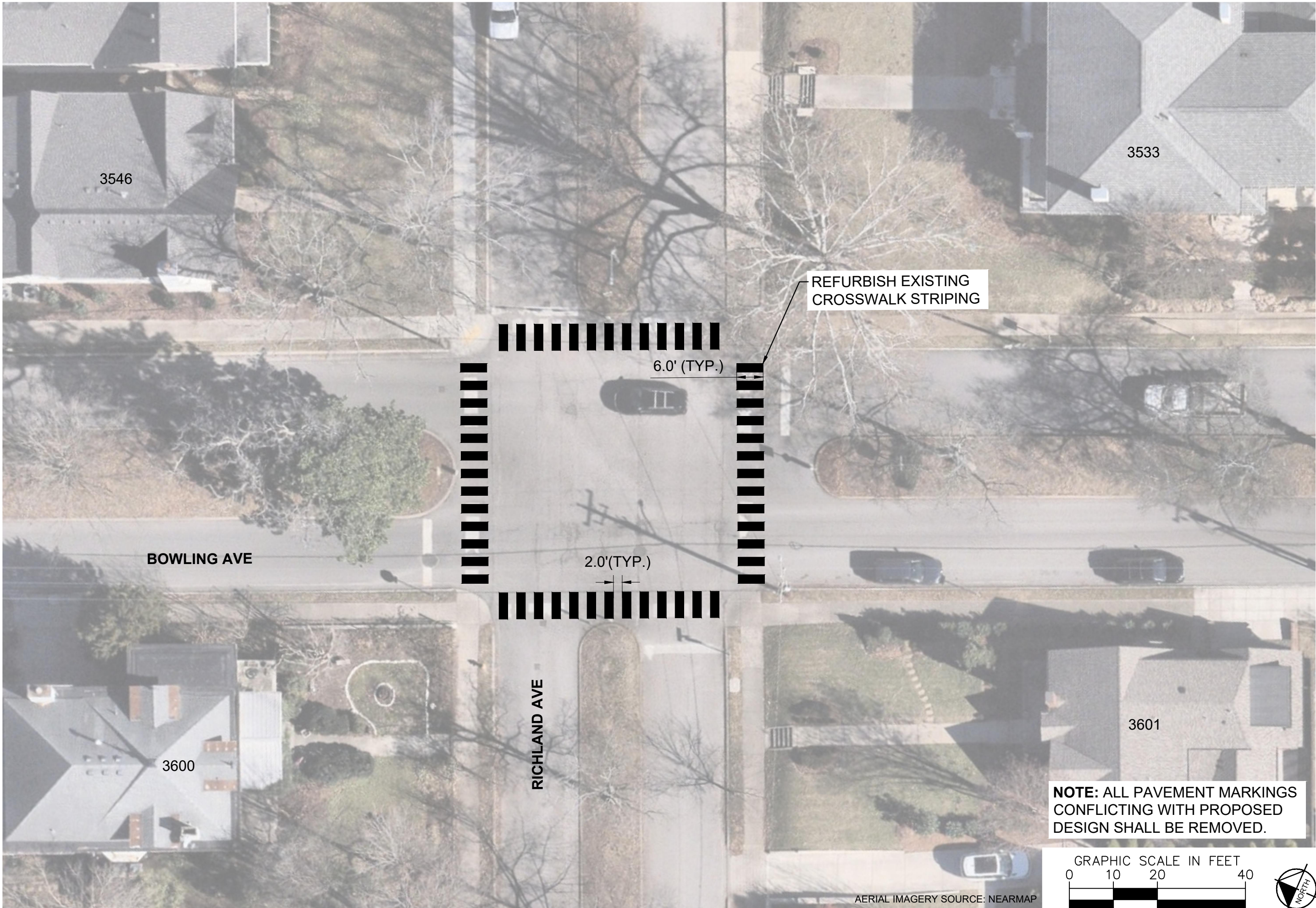


DESIGNED BY: JLH
DRAWN BY: KMZ
CHECKED BY: NDOT
DATE: 10/9/2025
KIMLEY-HORN PROJECT NO. 118900066

CONCEPT

SHEET NUMBER
04

This document, together with the concepts and designs presented herein, is intended only for the specific purpose and client for which it was prepared. Reuse of and improper reliance on this document without written authorization and adaptation by Kimley-Horn and Associates, Inc. shall be without liability to Kimley-Horn and Associates, Inc.



NDOT

BOWLING AVENUE
TRAFFIC CALMING
NASHVILLE, TN

DRAFT
PRELIMINARY
PLANS
FOR REVIEW ONLY
10/9/2025



DESIGNED BY: JLH
DRAWN BY: KMZ
CHECKED BY: NDOT
DATE: 10/9/2025
KIMLEY-HORN PROJECT NO. 118900066

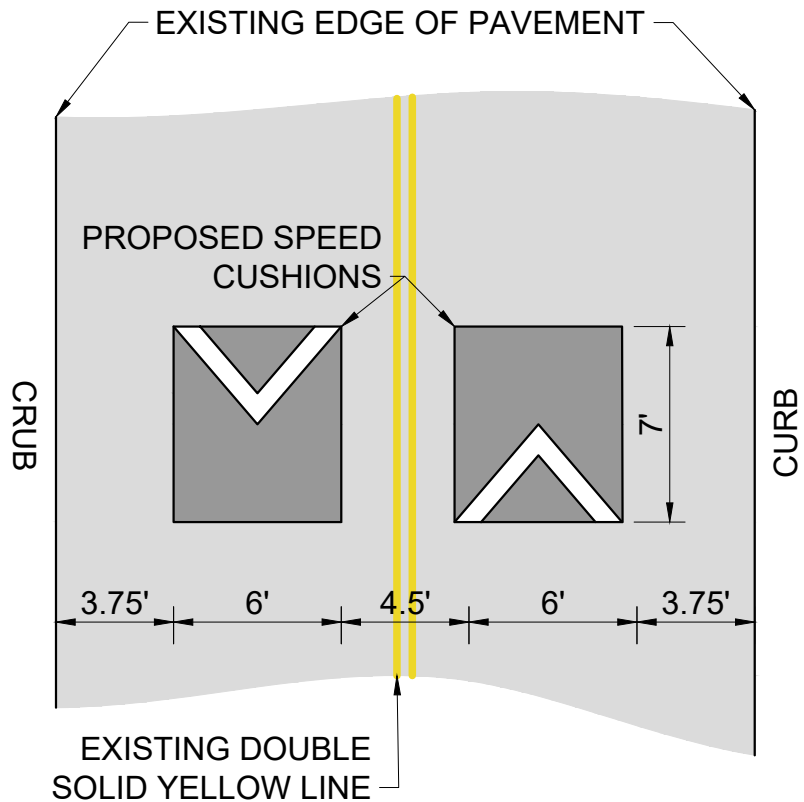
CONCEPT

SHEET NUMBER
05

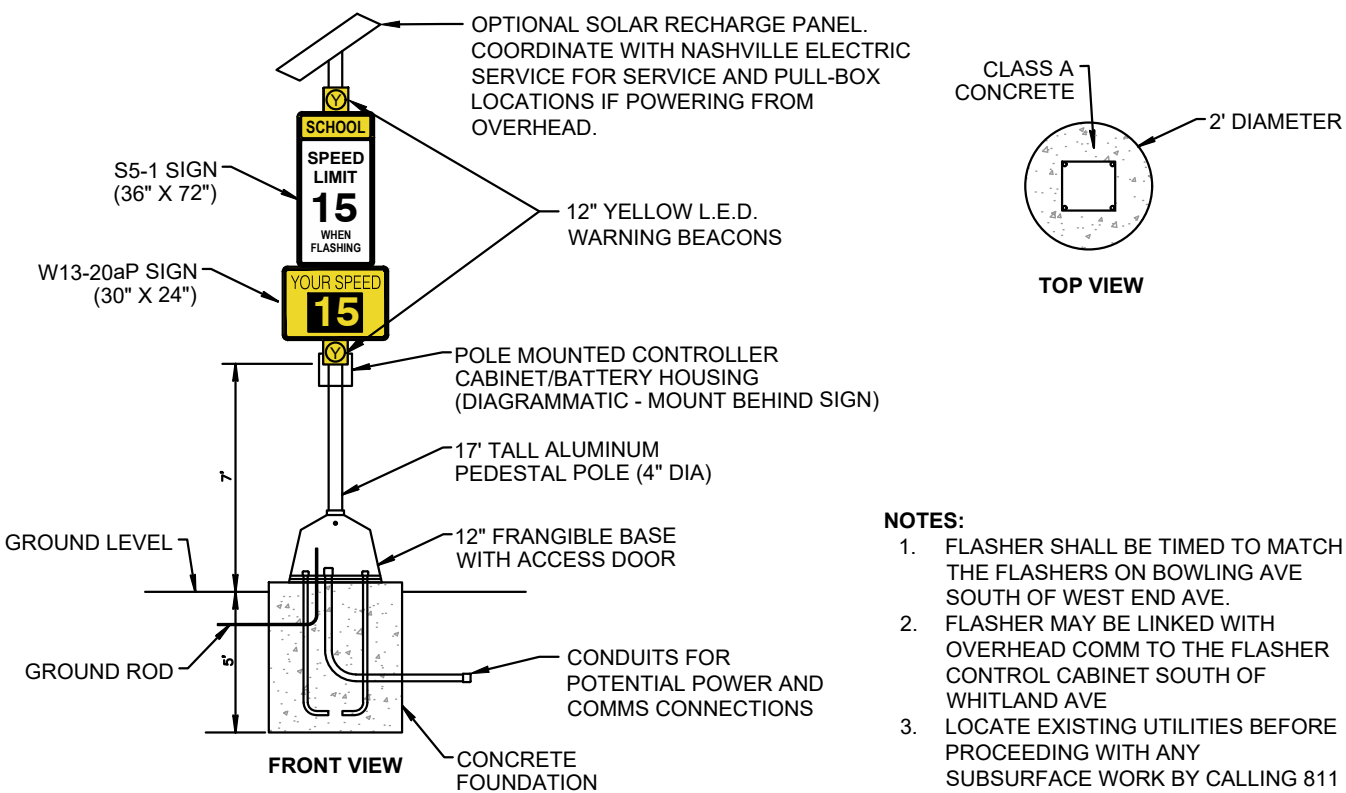
This document, together with the concepts and designs presented herein, is intended only for the specific purpose and client for which it was prepared. Reuse of and improper reliance on this document without written authorization and adaptation by Kimley-Horn and Associates, Inc. shall be without liability to Kimley-Horn and Associates, Inc.

CONFIGURATION A

PAVEMENT WIDTH: 24'



DETAIL 01
SCHOOL FLASHER ASSEMBLY



BOWLING AVENUE
TRAFFIC CALMING
NASHVILLE, TN

DRAFT
PRELIMINARY
PLANS
FOR REVIEW ONLY
10/9/2025



DESIGNED BY: JLH
DRAWN BY: KMZ
CHECKED BY: NDOT
DATE: 10/9/2025
KIMLEY-HORN PROJECT NO. 118900066

DETAIL

SHEET NUMBER
06