

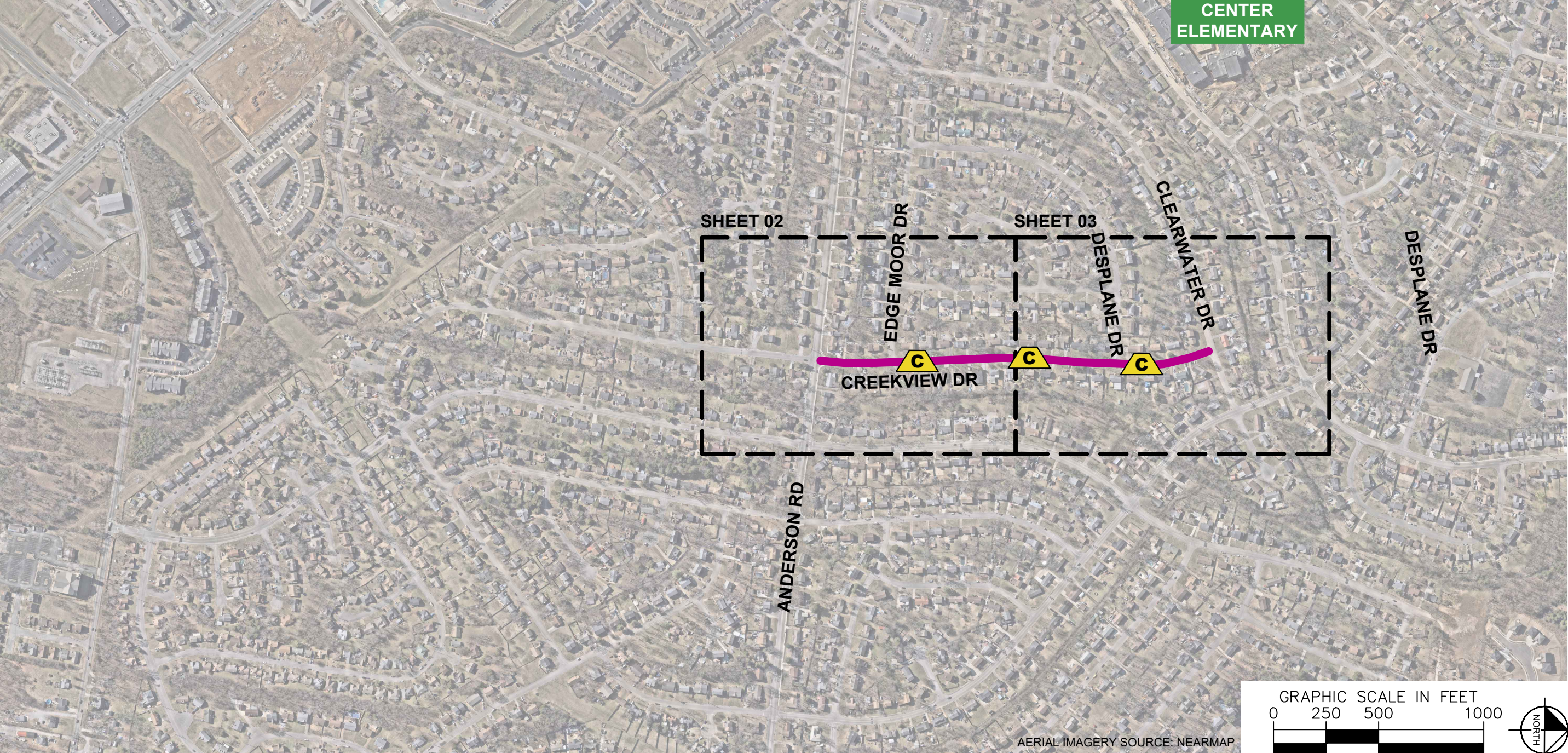


This document, together with the concepts and designs presented herein, is intended only for the specific purposes and client for which it was prepared. Reuse of and improper reliance on this document without written authorization and adaptation by Kimley-Horn and Associates, Inc. shall be without liability to Kimley-Horn and Associates, Inc.

ESTIMATED QUANTITIES	
SPEED CUSHIONS	
6' X 10.5' SPEED CUSHION WITH ONE ARROW	6
6' X 10.5' SPEED CUSHION TWO ARROWS	3
SIGNING	
W17-1 (VAR.) "SPEED CUSHION" SIGN (30" X 30")	2
W17-1 (VAR.) "SPEED CUSHIONS AHEAD" SIGN (30" X 30")	2
W13-1P "20 M.P.H" SIGN (18" X 18")	4
<b>NOTE:</b> ALL LOCATIONS ARE REFERENCED FROM CENTERLINE OF DRIVEWAYS OR OTHER LANDMARKS TO THE CENTER OF SPEED CUSHIONS OR SIGNS.	

LEGEND	
	LIMITS OF TRAFFIC CALMING PROJECT
	SPEED CUSHIONS



CREEKVIEW DRIVE  
TRAFFIC CALMING  
NASHVILLE, TN

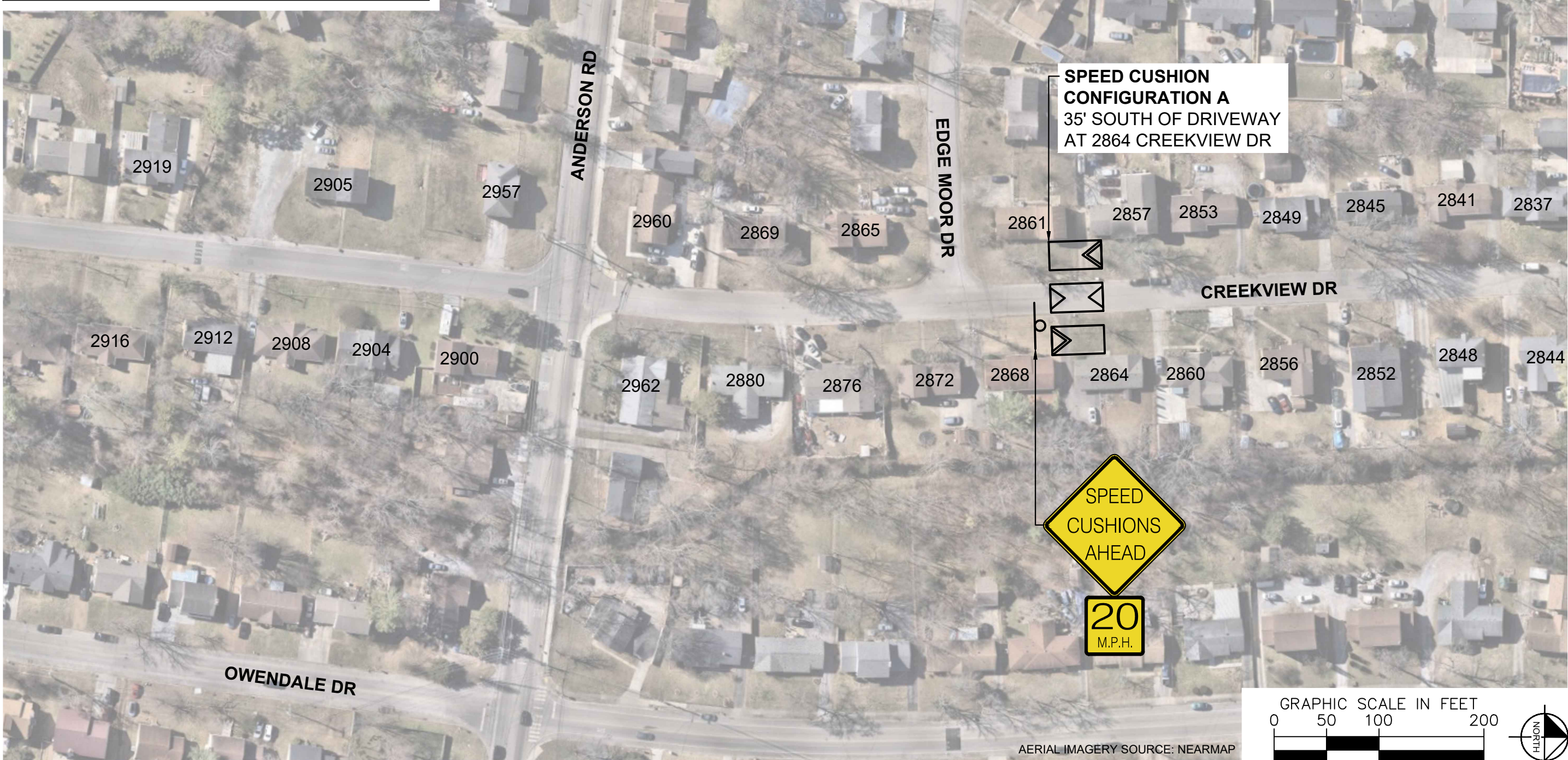
DRAFT  
PRELIMINARY  
PLANS  
FOR REVIEW ONLY  
10/22/2025



DESIGNED BY:	JLH
DRAWN BY:	KMZ
CHECKED BY:	NDOT
DATE:	10/22/2025
KIMLEY-HORN PROJECT NO. 118900066	

KEY
SHEET NUMBER 01





CREEKVIEW DRIVE  
TRAFFIC CALMING  
NASHVILLE, TN

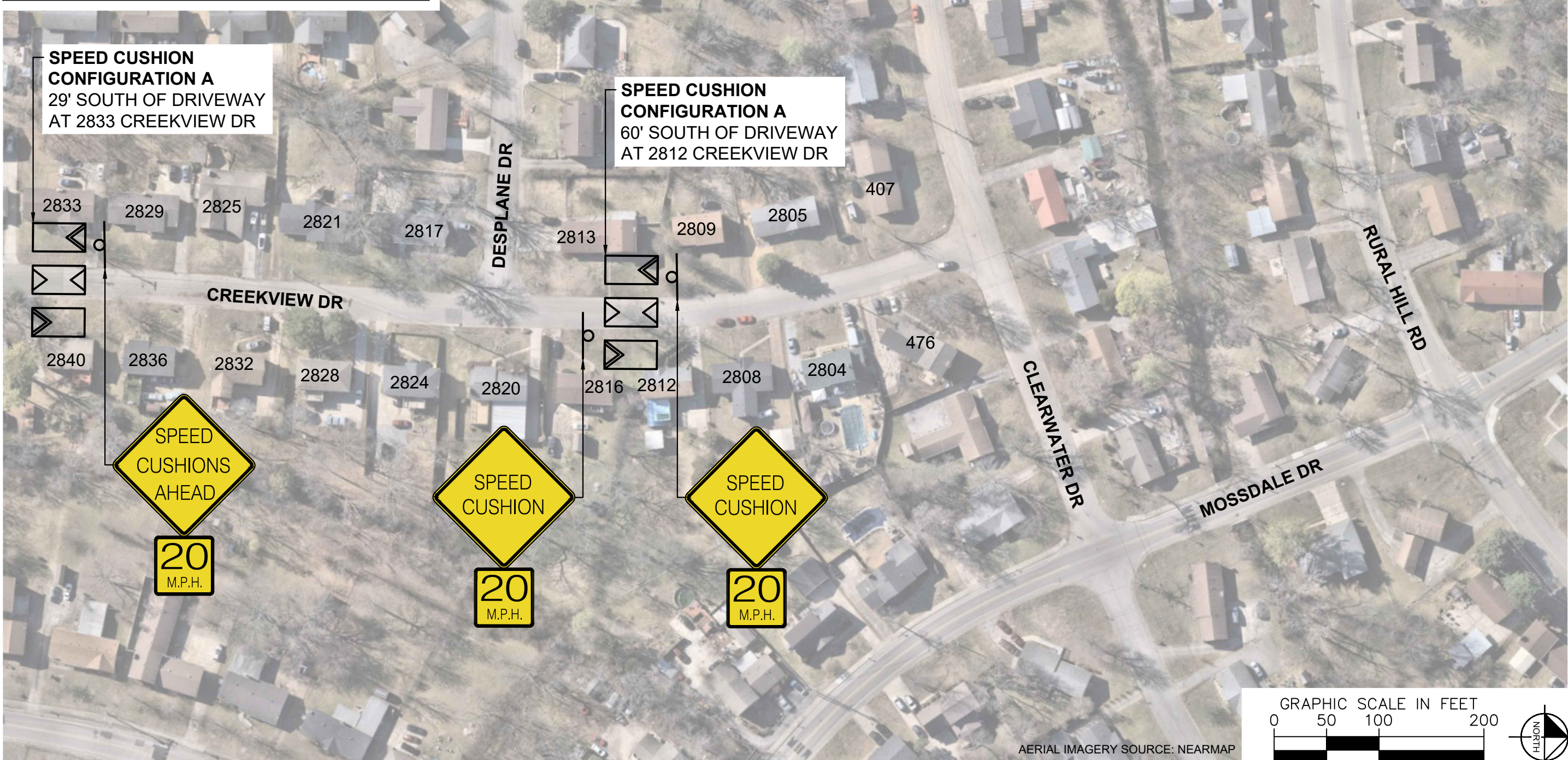
DRAFT  
PRELIMINARY  
PLANS  
FOR REVIEW ONLY  
10/22/2025



DESIGNED BY: JLH  
DRAWN BY: KMZ  
CHECKED BY: NDOT  
DATE: 10/22/2025  
KIMLEY-HORN PROJECT NO. 118900066

CONCEPT  
SHEET NUMBER  
02



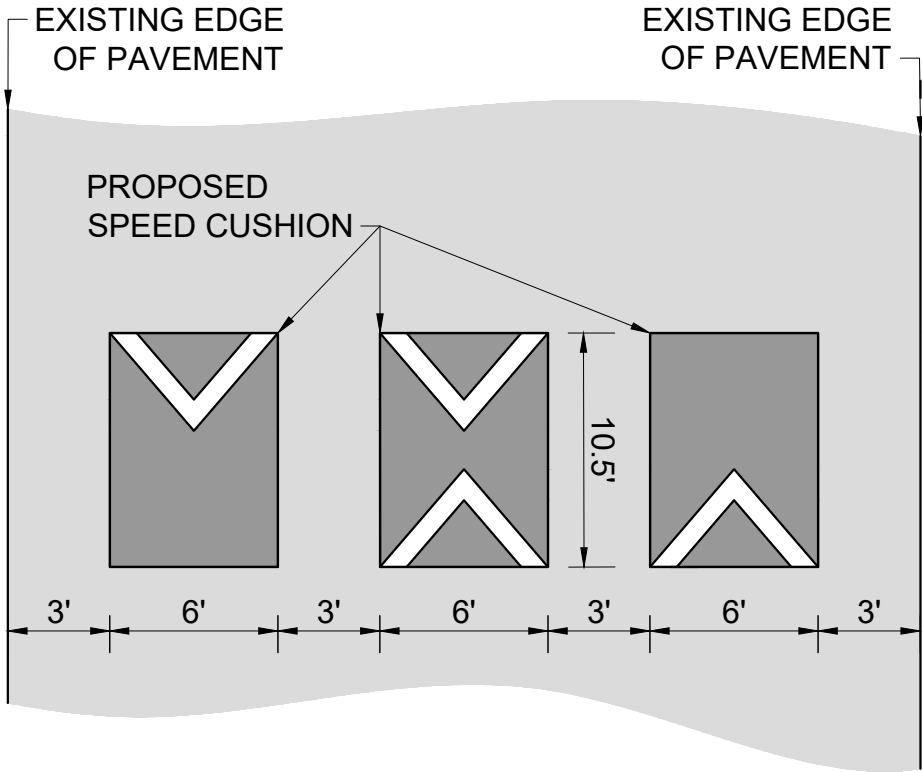




This document, together with the concepts and designs presented herein, is intended only for the specific purpose and client for which it was prepared. Reuse of and improper reliance on this document without written authorization and adaptation by Kimley-Horn and Associates, Inc. shall be without liability to Kimley-Horn and Associates, Inc.

CONFIGURATION A

PAVEMENT WIDTH: 30'



CREEKVIEW DRIVE  
TRAFFIC CALMING  
NASHVILLE, TN

DRAFT  
PRELIMINARY  
PLANS  
FOR REVIEW ONLY  
10/22/2025



DESIGNED BY: JLH  
DRAWN BY: KMZ  
CHECKED BY: NDOT  
DATE: 10/22/2025  
KIMLEY-HORN PROJECT NO. 118900066

DETAIL

SHEET NUMBER  
04