

This document, together with the concepts and designs presented herein, is intended only for the specific purpose and client for which it was prepared. Reuse of and improper reliance on this document without written authorization and adaptation by Kimley-Horn and Associates, Inc. shall be without liability to Kimley-Horn and Associates, Inc.

### ESTIMATED QUANTITIES

SPEED CUSHIONS	
6' X 10.5' SPEED CUSHION WITH ONE ARROW	14
SIGNING	
W17-1 (VAR.) "SPEED CUSHION" SIGN (30" X 30")	6
W17-1 (VAR.) "SPEED CUSHIONS AHEAD" SIGN (30" X 30")	4
W13-1P "20 M.P.H" SIGN (18" X 18")	10
W20-4 "ONE LANE ROAD" SIGN (30" X 30")	2
W16-9P "AHEAD" SIGN (24" X 12")	2
R1-2 "YIELD" SIGN (30" X 30" X 30")	2
OM1-1 TYPE 1 OBJECT MARKERS SIGN (18" X 18")	2
R1-2AP "TO ONCOMING TRAFFIC" SIGN (24" X 18")	2
PAVEMENT MARKINGS AND DELINEATORS	
4" WHITE FLEXIBLE DELINEATOR	32
4" DOUBLE SOLID WHITE LINE (LF)	190
4" SINGLE SOLID WHITE LINE (LF)	180
6" SOLID WHITE LINE (LF)	160

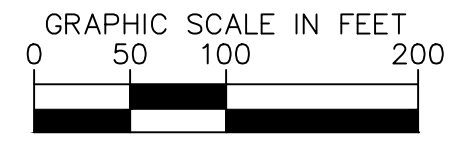
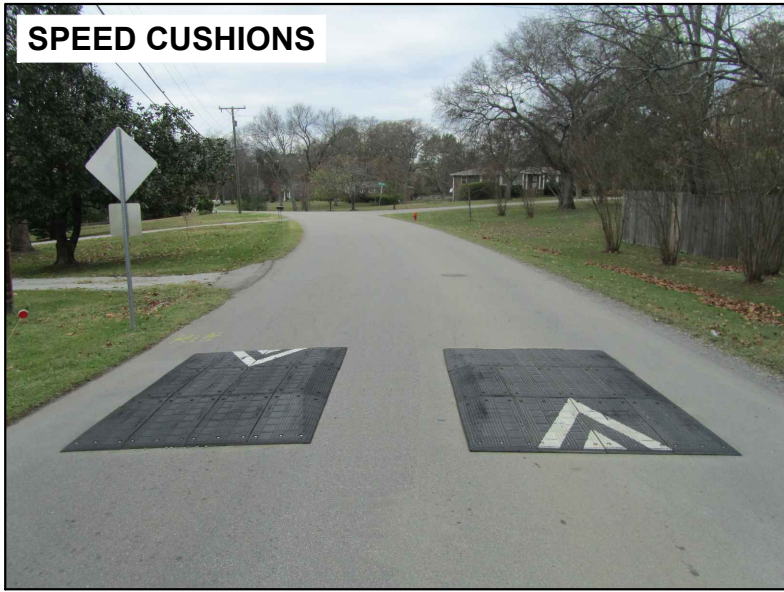
**NOTE:** ALL LOCATIONS ARE REFERENCED FROM CENTERLINE OF DRIVEWAYS OR OTHER LANDMARKS TO THE CENTER OF SPEED CUSHIONS OR SIGNS.

### LEGEND

- LIMITS OF TRAFFIC CALMING PROJECT
- C SPEED CUSHIONS
- B BULB-OUTS
- P PINCHPOINT



**SPEED CUSHIONS**



AERIAL IMAGERY SOURCE: NEARMAP



**JAY STREET  
TRAFFIC CALMING**  
NASHVILLE, TN

**DRAFT  
PRELIMINARY  
PLANS**  
FOR REVIEW ONLY  
12/21/25

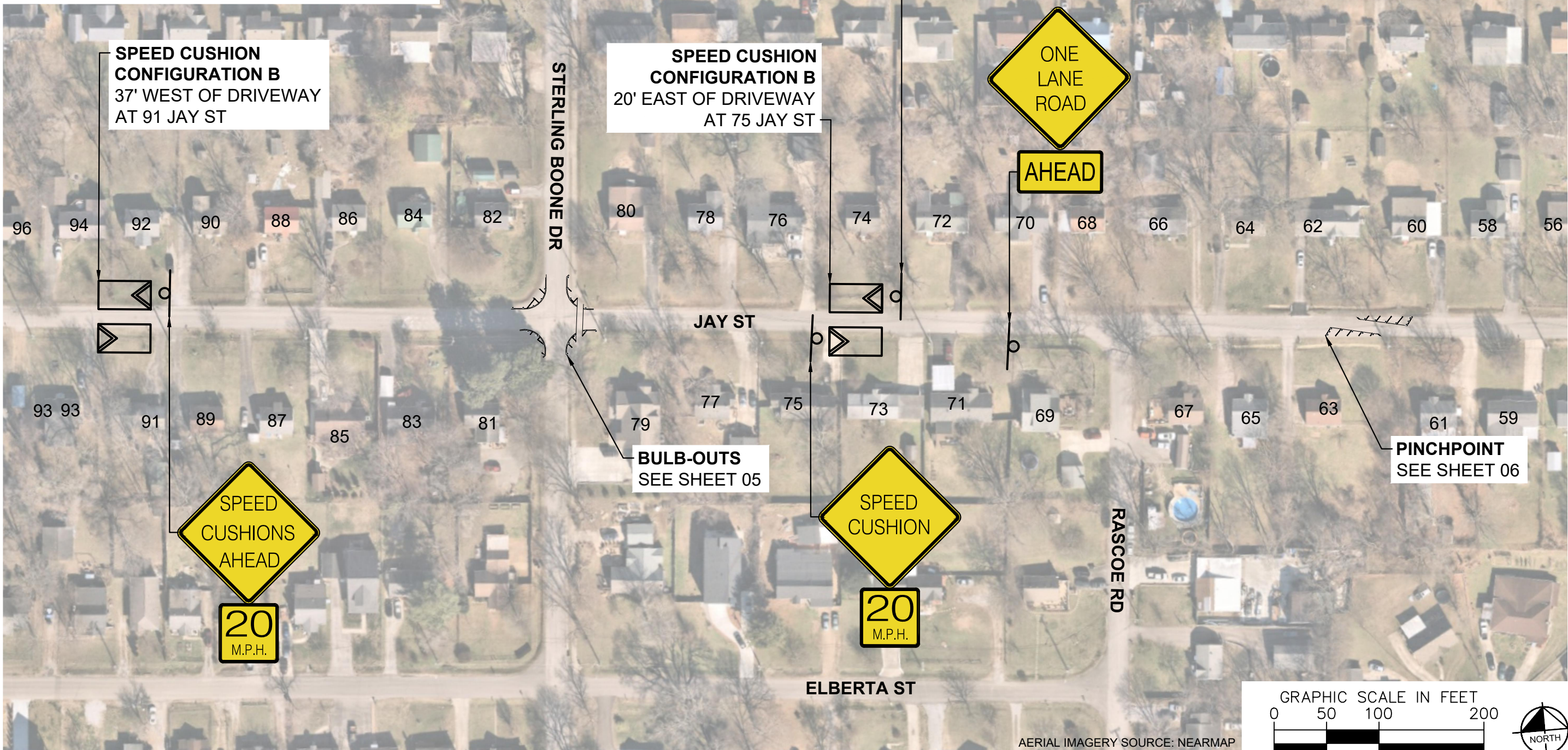
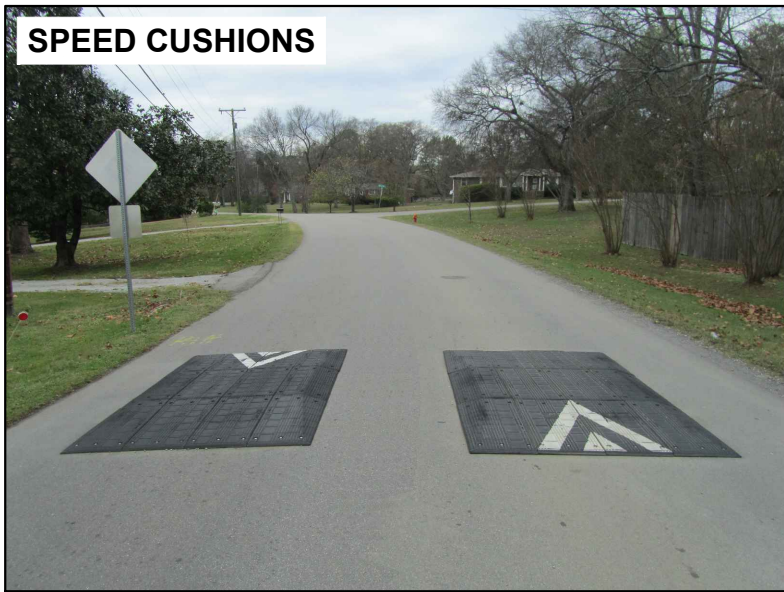


DESIGNED BY:	DJG
DRAWN BY:	KMZ
CHECKED BY:	NDOT
DATE:	12/22/25
KIMLEY-HORN PROJECT NO.:	118800051

**CONCEPT**

SHEET NUMBER  
**02**

**SPEED CUSHIONS**

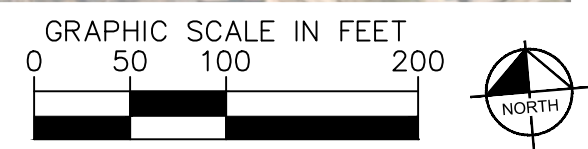


**SPEED CUSHION CONFIGURATION B**  
37' WEST OF DRIVEWAY  
AT 91 JAY ST

**SPEED CUSHION CONFIGURATION B**  
20' EAST OF DRIVEWAY  
AT 75 JAY ST

**BULB-OUTS**  
SEE SHEET 05

**PINCHPOINT**  
SEE SHEET 06



AERIAL IMAGERY SOURCE: NEARMAP



**JAY STREET  
TRAFFIC CALMING**  
NASHVILLE, TN

**DRAFT  
PRELIMINARY  
PLANS**  
FOR REVIEW ONLY  
12/21/25

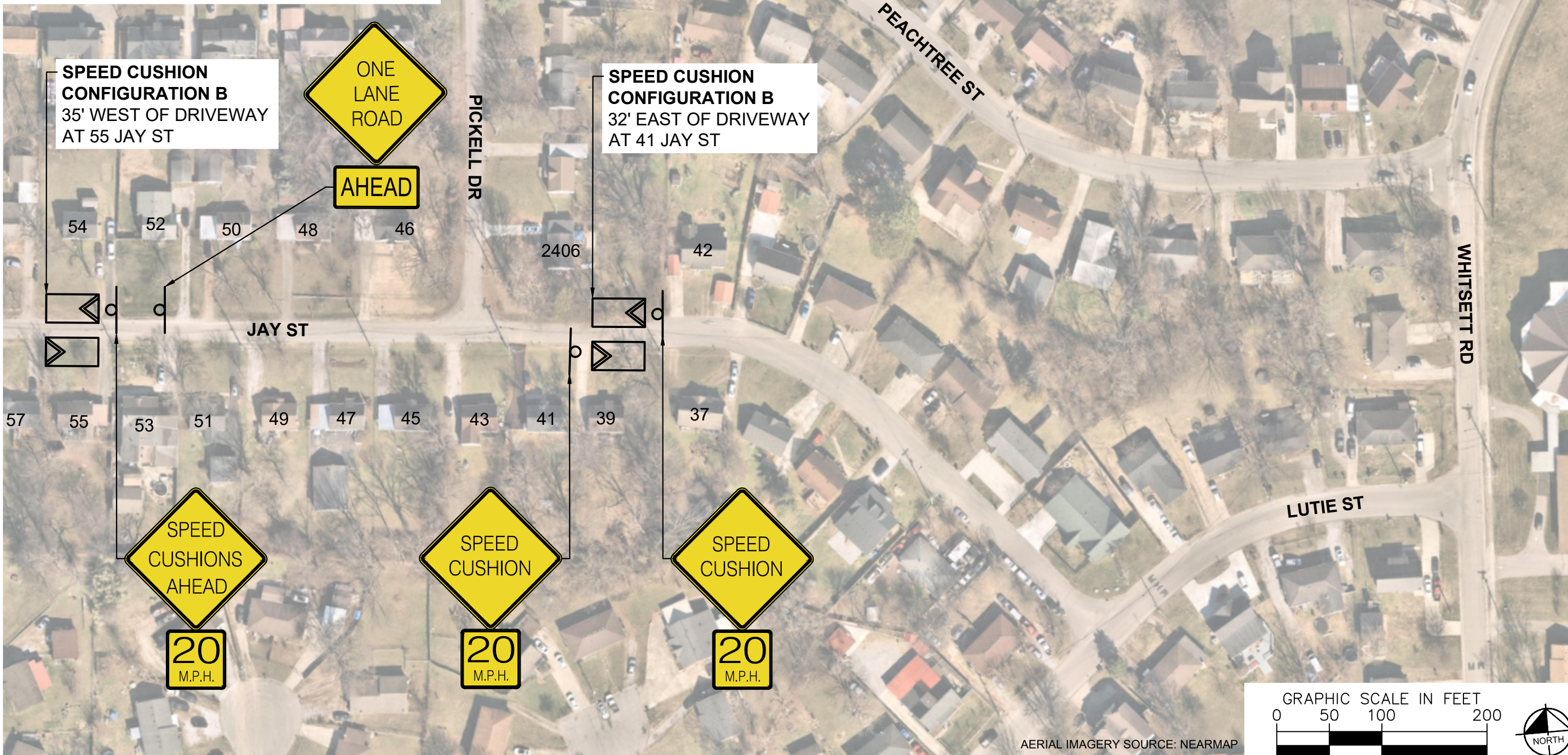
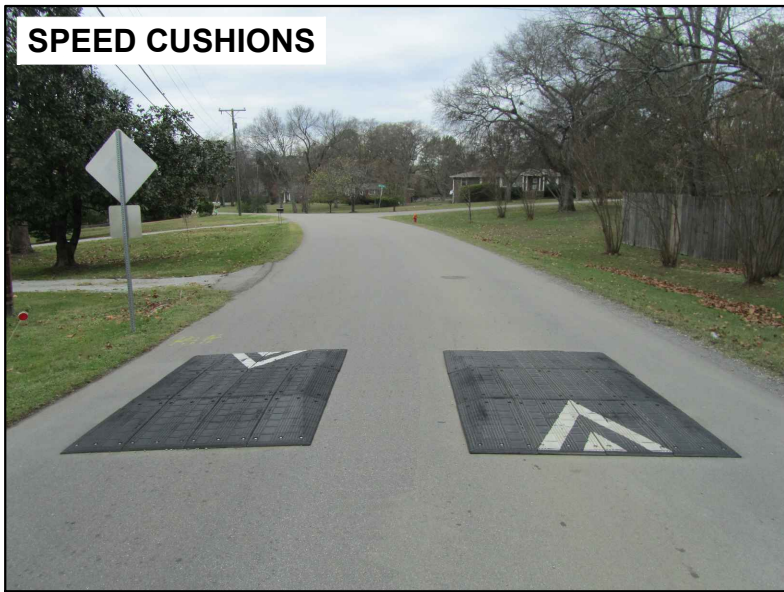


DESIGNED BY:	DJG
DRAWN BY:	KMZ
CHECKED BY:	NDOT
DATE:	12/2/25
KIMLEY-HORN PROJECT NO.:	11880051

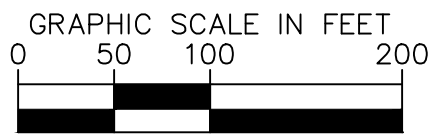
**CONCEPT**  
SHEET NUMBER  
**03**

This document, together with the concepts and designs presented herein, is intended only for the specific purpose and client for which it was prepared. Reuse of and improper reliance on this document without written authorization and adaptation by Kimley-Horn and Associates, Inc. shall be without liability to Kimley-Horn and Associates, Inc.

**SPEED CUSHIONS**



AERIAL IMAGERY SOURCE: NEARMAP



**NDOT**

**JAY STREET  
TRAFFIC CALMING**  
NASHVILLE, TN

**DRAFT  
PRELIMINARY  
PLANS**  
FOR REVIEW ONLY  
12/21/2025

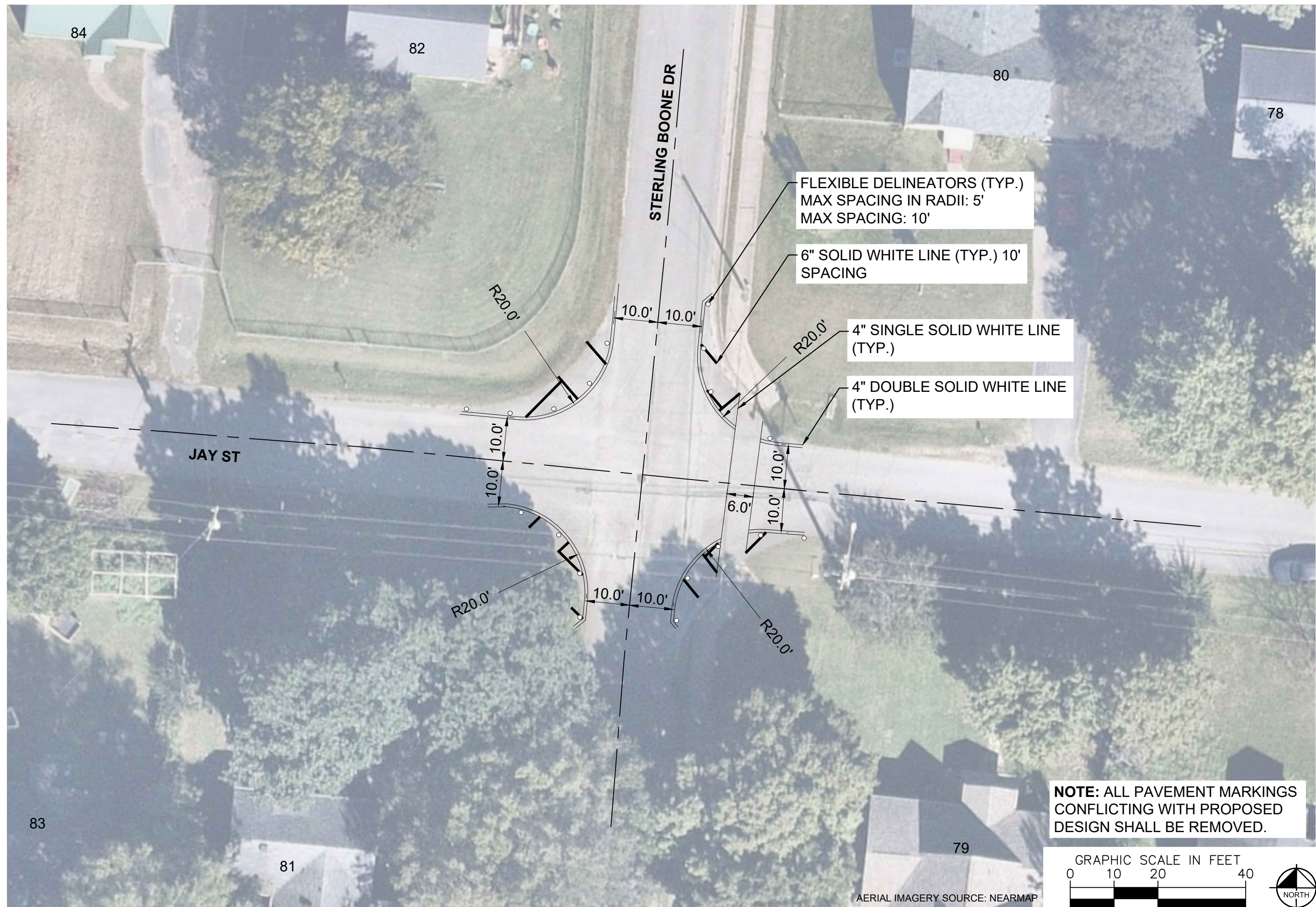
**Kimley»Horn**

DESIGNED BY: DJG  
DRAWN BY: KMZ  
CHECKED BY: NDOT  
DATE: 12/22/25  
KIMLEY-HORN PROJECT NO. 118800051

**CONCEPT**

SHEET NUMBER  
**04**

This document, together with the concepts and designs presented herein, is intended only for the specific purpose and client for which it was prepared. Reuse of and improper reliance on this document without written authorization and adaptation by Kimley-Horn and Associates, Inc. shall be without liability to Kimley-Horn and Associates, Inc.



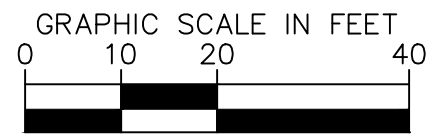
FLEXIBLE DELINEATORS (TYP.)  
MAX SPACING IN RADII: 5'  
MAX SPACING: 10'

6" SOLID WHITE LINE (TYP.) 10'  
SPACING

4" SINGLE SOLID WHITE LINE  
(TYP.)

4" DOUBLE SOLID WHITE LINE  
(TYP.)

**NOTE: ALL PAVEMENT MARKINGS  
CONFLICTING WITH PROPOSED  
DESIGN SHALL BE REMOVED.**



AERIAL IMAGERY SOURCE: NEARMAP



JAY STREET  
TRAFFIC CALMING  
NASHVILLE, TN

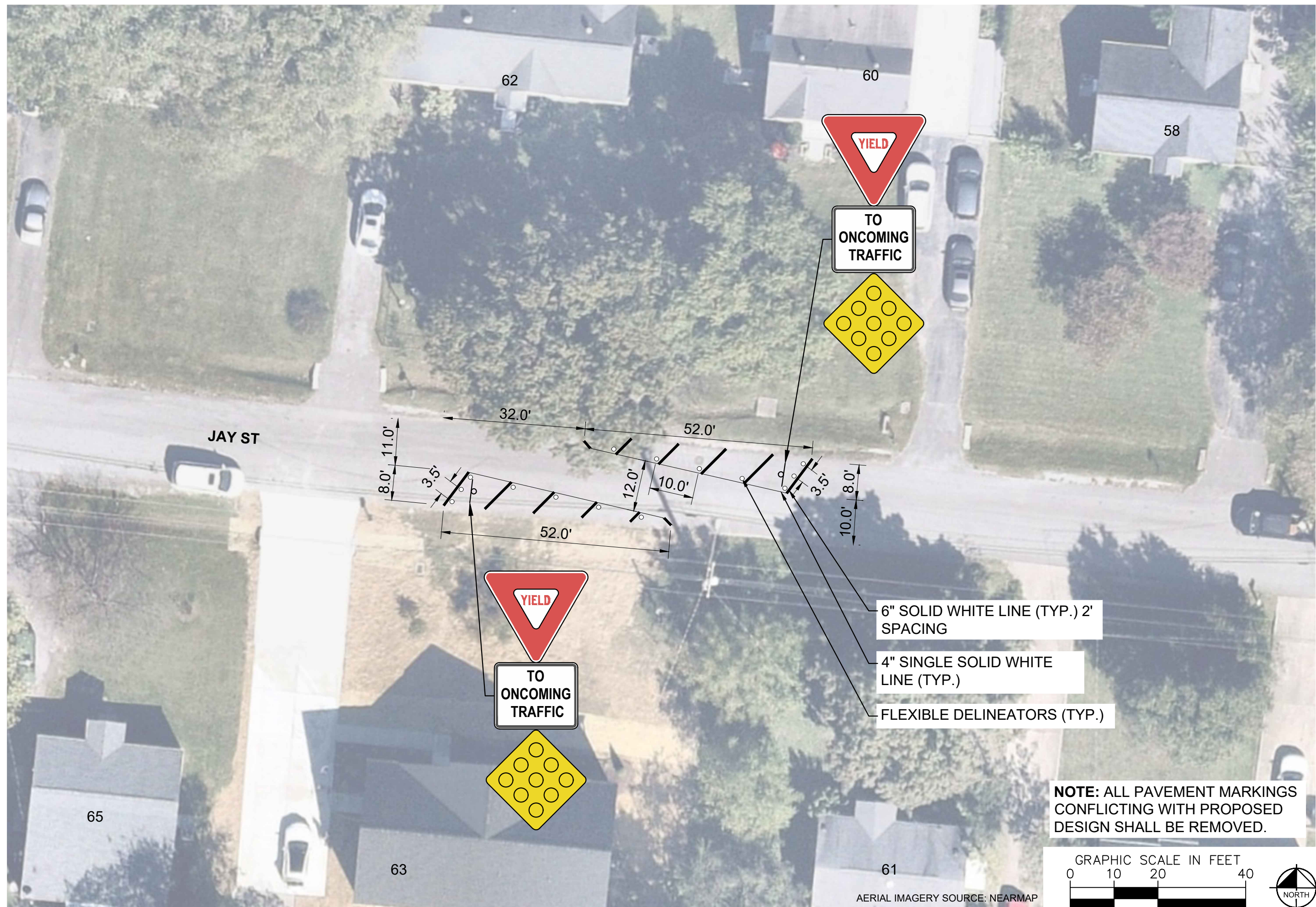
DRAFT  
PRELIMINARY  
PLANS  
FOR REVIEW ONLY  
12/21/2025



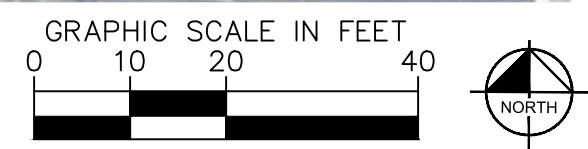
DESIGNED BY:	DJG
DRAWN BY:	KMZ
CHECKED BY:	NDOT
DATE:	12/2/25
KIMLEY-HORN PROJECT NO.	118800051

**CONCEPT**  
SHEET NUMBER  
**05**

This document, together with the concepts and designs presented herein, is intended only for the specific purpose and client for which it was prepared. Reuse and improper reliance on this document without written authorization and adaptation by Kimley-Horn and Associates, Inc. shall be without liability to Kimley-Horn and Associates, Inc.



**NOTE: ALL PAVEMENT MARKINGS  
CONFLICTING WITH PROPOSED  
DESIGN SHALL BE REMOVED.**



AERIAL IMAGERY SOURCE: NEARMAP



**JAY STREET  
TRAFFIC CALMING**  
NASHVILLE, TN

**DRAFT  
PRELIMINARY  
PLANS**  
FOR REVIEW ONLY  
12/21/25

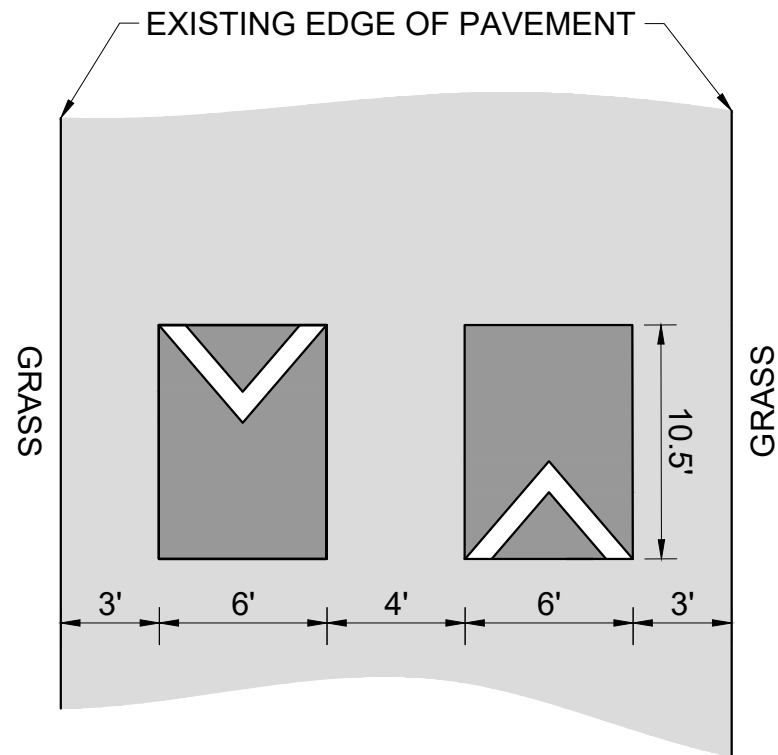


DESIGNED BY:	DJG
DRAWN BY:	KMZ
CHECKED BY:	NDOT
DATE:	12/2/25
KIMLEY-HORN PROJECT NO.:	118800051

**CONCEPT**  
SHEET NUMBER  
**06**

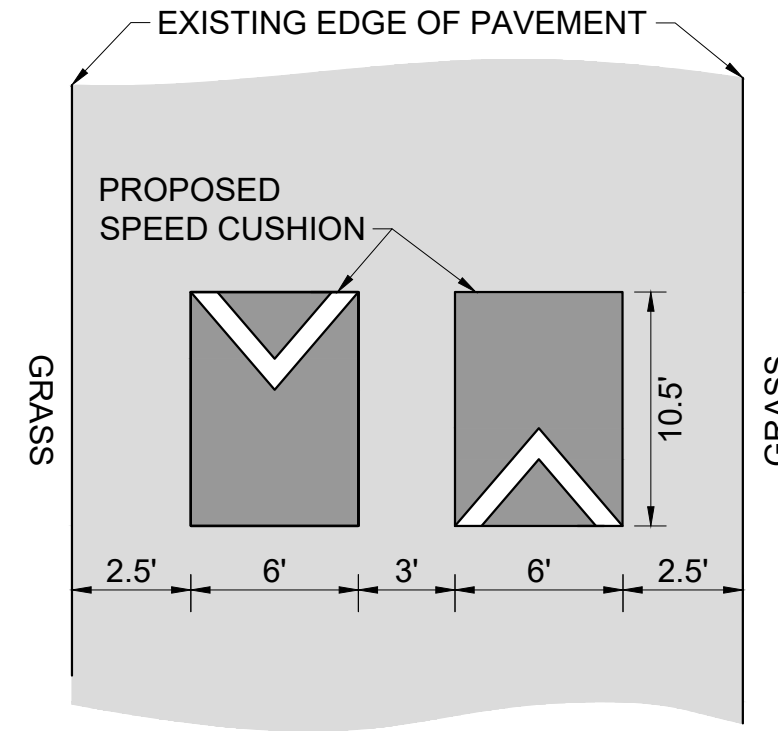
# CONFIGURATION A

PAVEMENT WIDTH: 22'



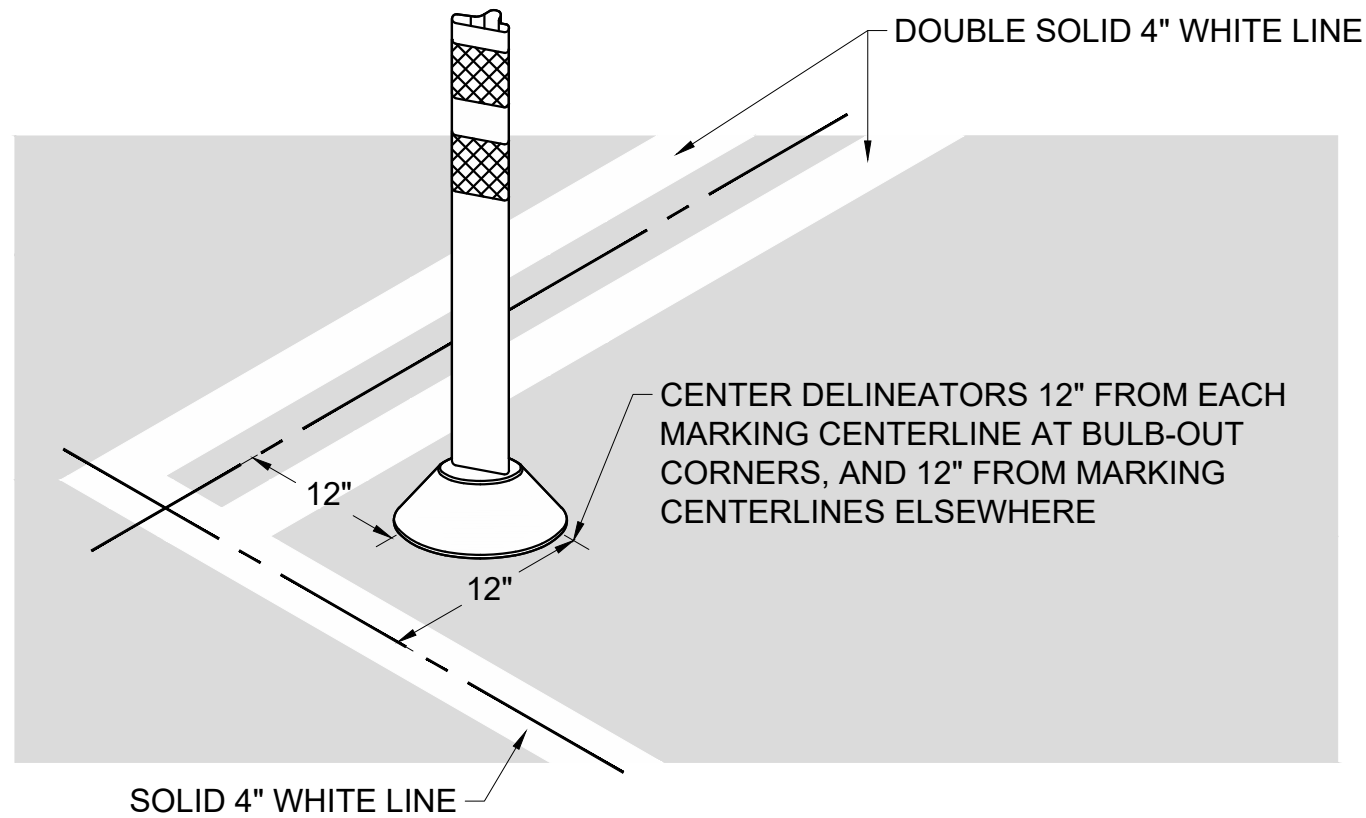
# CONFIGURATION B

PAVEMENT WIDTH: 20'



# DETAIL 01

DELINEATOR PLACEMENT



JAY STREET  
TRAFFIC CALMING  
NASHVILLE, TN

DRAFT  
PRELIMINARY  
PLANS  
FOR REVIEW ONLY  
12/21/2025



DESIGNED BY: DJG  
DRAWN BY: KMZ  
CHECKED BY: NDOT  
DATE: 12/2/25  
KIMLEY-HORN PROJECT NO. 118800051

DETAIL

SHEET NUMBER  
07

This document, together with the concepts and designs presented herein, is intended only for the specific purpose and client for which it was prepared. Reuse of and improper reliance on this document without written authorization and adaptation by Kimley-Horn and Associates, Inc. shall be without liability to Kimley-Horn and Associates, Inc.