

ESTIMATED QUANTITIES

SPEED CUSHIONS

6' X 10.5' SPEED CUSHION WITH ONE ARROW	6
6' X 10.5' SPEED CUSHION WITH DSYL	3

SIGNING

W17-1 (VAR.) "SPEED CUSHION" SIGN (30" X 30")	2
W17-1 (VAR.) "SPEED CUSHIONS AHEAD" SIGN (30" X 30")	2
W13-1P "20 M.P.H" SIGN (18" X 18")	4

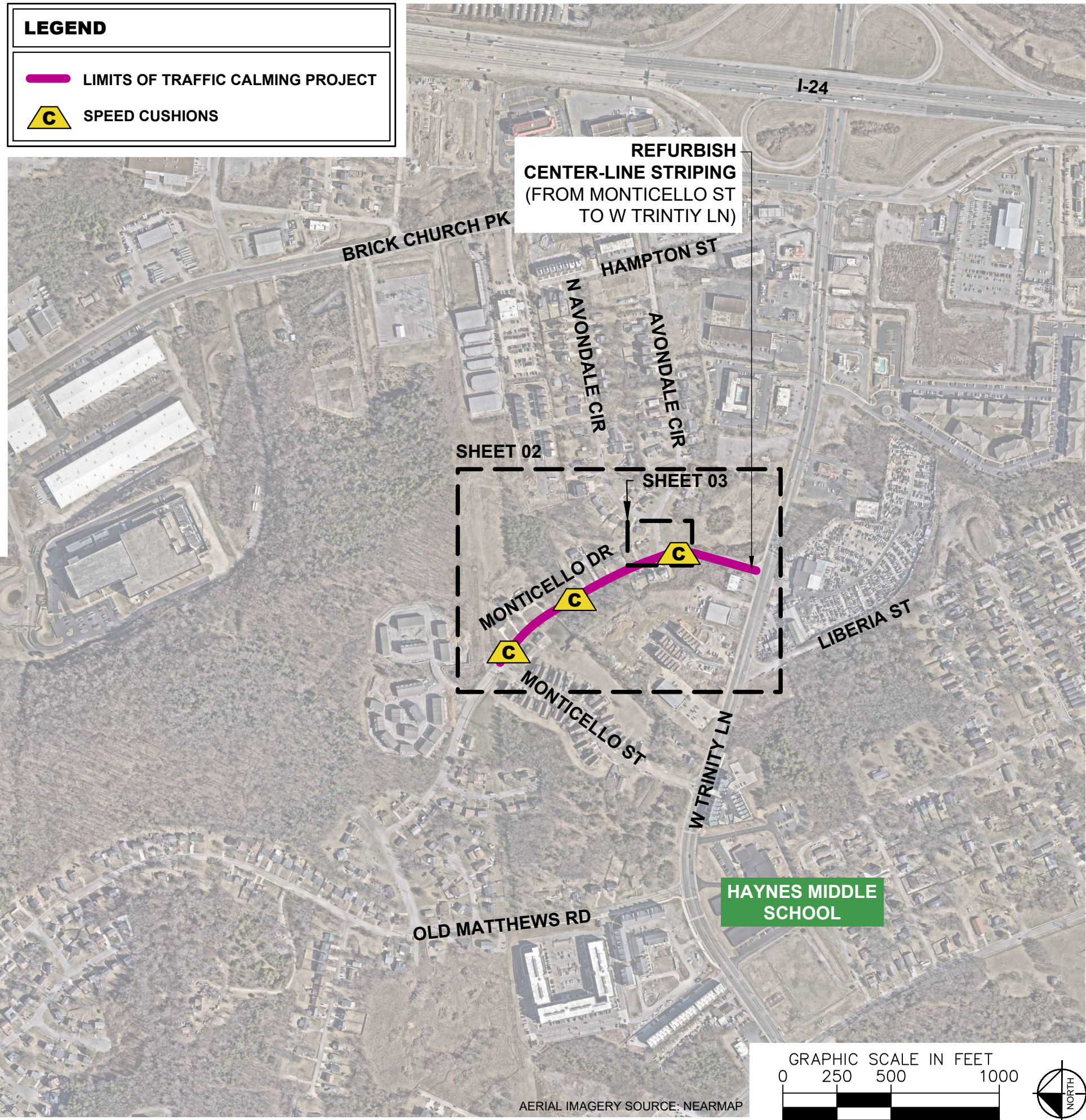
PAVEMENT MARKINGS AND DELINEATORS

4" YELLOW FLEXIBLE DELINEATOR	16
4" SOLID WHITE LINE (LF)	250
4" SOLID YELLOW LINE (LF)	170
4" DOUBLE SOLID YELLOW LINE (LF)	1300
6" SOLID YELLOW LINE (LF)	80
24" WHITE STOP LINE (LF)	20

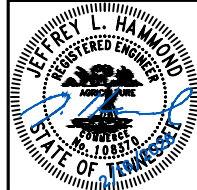
NOTE: ALL LOCATIONS ARE REFERENCED FROM CENTERLINE OF DRIVEWAYS OR OTHER LANDMARKS TO THE CENTER OF SPEED CUSHIONS OR SIGNS.

LEGEND

-  LIMITS OF TRAFFIC CALMING PROJECT
-  SPEED CUSHIONS

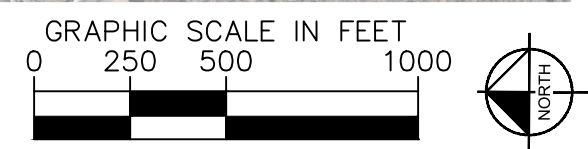


MONTICELLO DRIVE
TRAFFIC CALMING
NASHVILLE, TN



DESIGNED BY:	JLH
DRAWN BY:	HXW
CHECKED BY:	NDOT
DATE:	2/18/2026
KIMLEY-HORN PROJECT NO.	118800066

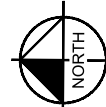
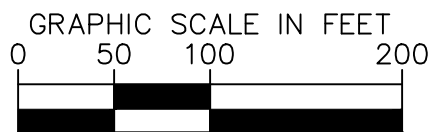
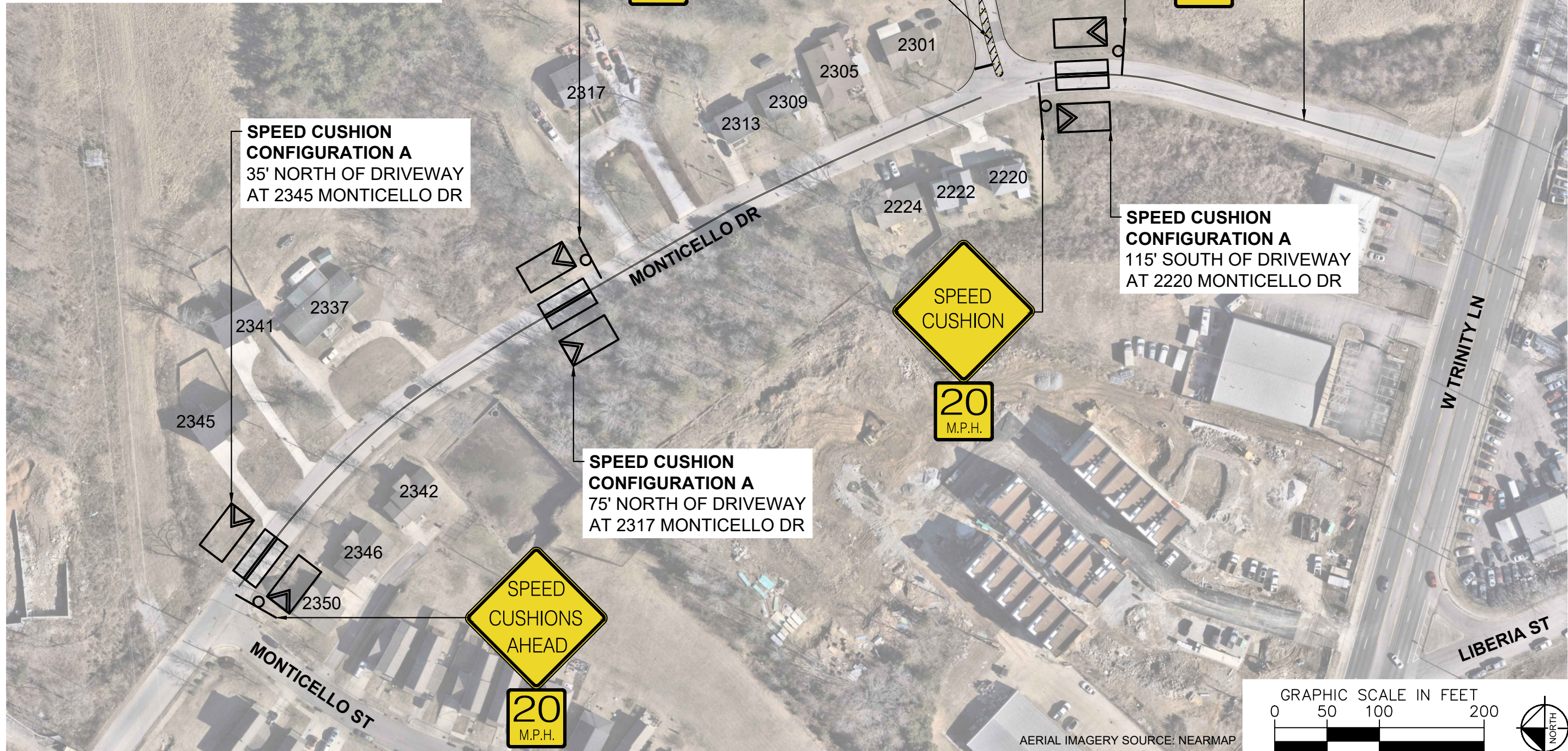
KEY
SHEET NUMBER
01



AERIAL IMAGERY SOURCE: NEARMAP

This document, together with the concepts and designs presented herein, is intended only for the specific purpose and client for which it was prepared. Reuse of and improper reliance on this document without written authorization and adaptation by Kimley-Horn and Associates, Inc. shall be without liability to Kimley-Horn and Associates, Inc.

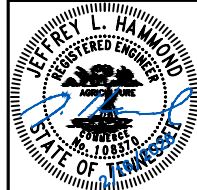
SPEED CUSHIONS



AERIAL IMAGERY SOURCE: NEARMAP



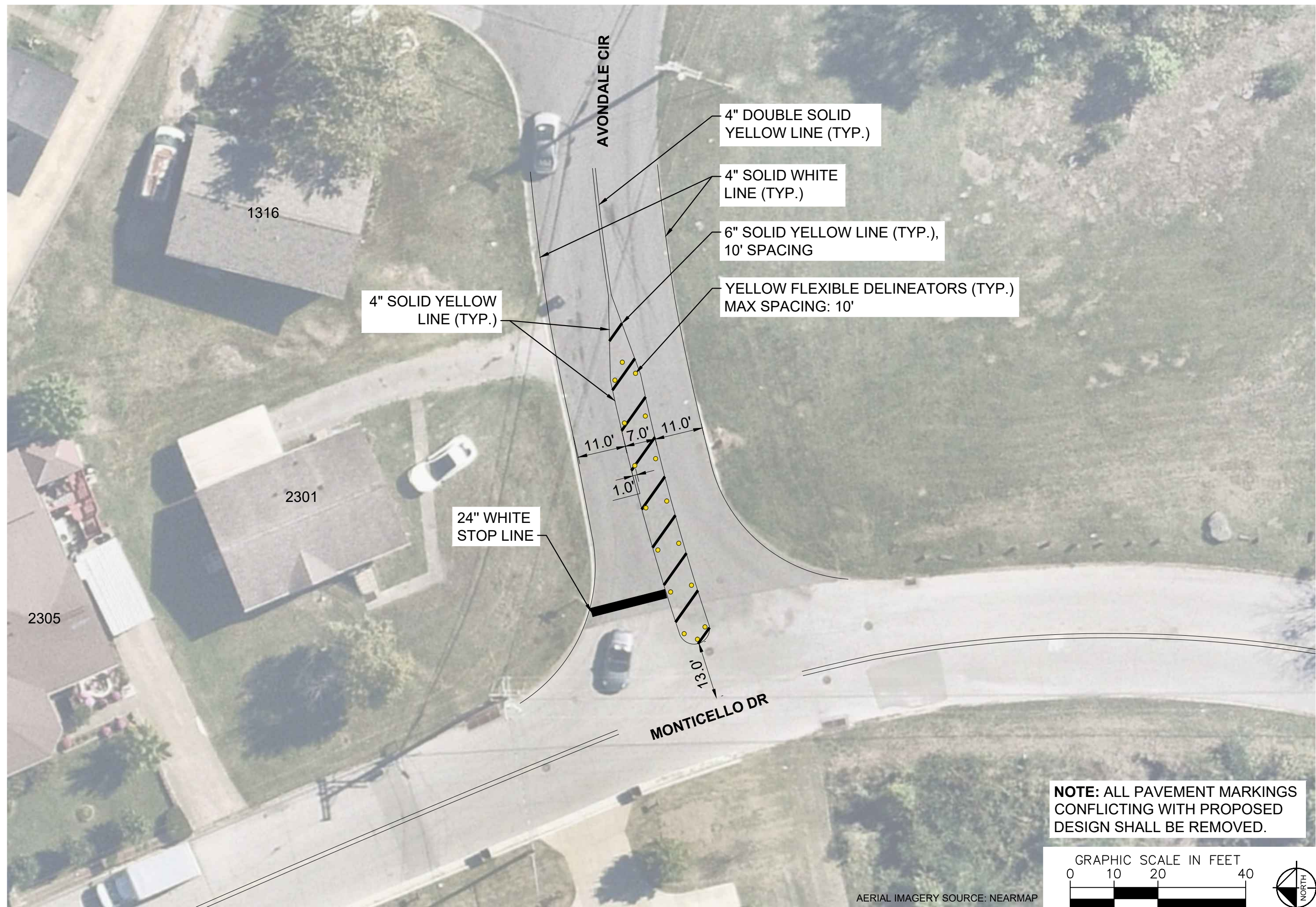
**MONTICELLO DRIVE
TRAFFIC CALMING**
NASHVILLE, TN



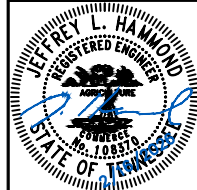
DESIGNED BY:	JLH
DRAWN BY:	HXW
CHECKED BY:	NDOT
DATE:	2/18/2026
KIMLEY-HORN PROJECT NO.:	118800066

CONCEPT
SHEET NUMBER
02

This document, together with the concepts and designs presented herein, is intended only for the specific purpose and client for which it was prepared. Reuse of and improper reliance on this document without written authorization and adaptation by Kimley-Horn and Associates, Inc. shall be without liability to Kimley-Horn and Associates, Inc.



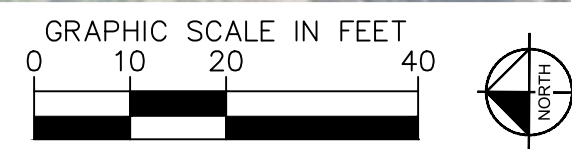
MONTICELLO DRIVE
TRAFFIC CALMING
NASHVILLE, TN



DESIGNED BY: J.L.H.
DRAWN BY: H.X.W.
CHECKED BY: N.D.O.T.
DATE: 2/18/2026
KIMLEY-HORN PROJECT NO. 118800066

CONCEPT
SHEET NUMBER
03

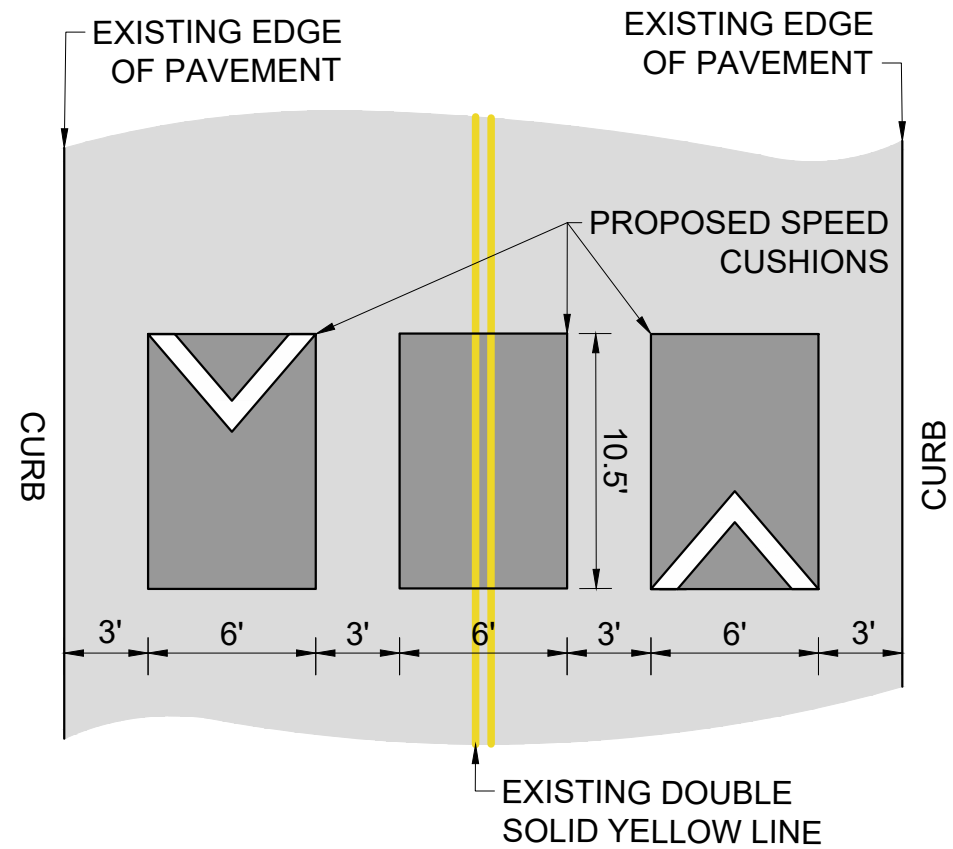
**NOTE: ALL PAVEMENT MARKINGS
CONFLICTING WITH PROPOSED
DESIGN SHALL BE REMOVED.**



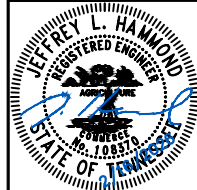
AERIAL IMAGERY SOURCE: NEARMAP

CONFIGURATION A

PAVEMENT WIDTH: 30'



MONTICELLO DRIVE
TRAFFIC CALMING
NASHVILLE, TN



DESIGNED BY: J.L.H.
DRAWN BY: H.X.W.
CHECKED BY: NDOT
DATE: 2/18/2026
KIMLEY-HORN PROJECT NO. 118800066

DETAIL

SHEET NUMBER
04

This document, together with the concepts and designs presented herein, is intended only for the specific purpose and client for which it was prepared. Reuse of and improper reliance on this document without written authorization and adaptation by Kimley-Horn and Associates, Inc. shall be without liability to Kimley-Horn and Associates, Inc.