

This document, together with the concepts and designs presented herein, is intended only for the specific purpose and client for which it was prepared. Reuse of and improper reliance on this document without written authorization and adaptation by Kimley-Horn and Associates, Inc. shall be without liability to Kimley-Horn and Associates, Inc.

ESTIMATED QUANTITIES

SPEED CUSHIONS

6' X 10.5' SPEED CUSHION WITH ONE ARROW	7
6' X 10.5' SPEED CUSHION TWO ARROWS	1

SIGNING





W17-1 (VAR.) "SPEED CUSHION" SIGN (30" X 30")	6
W13-1P "20 M.P.H" SIGN (18" X 18")	6
RADAR FEEDBACK SIGN	2

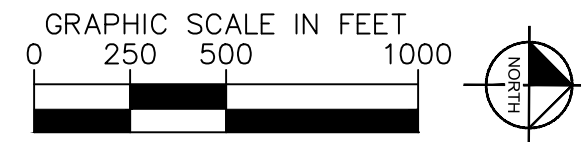
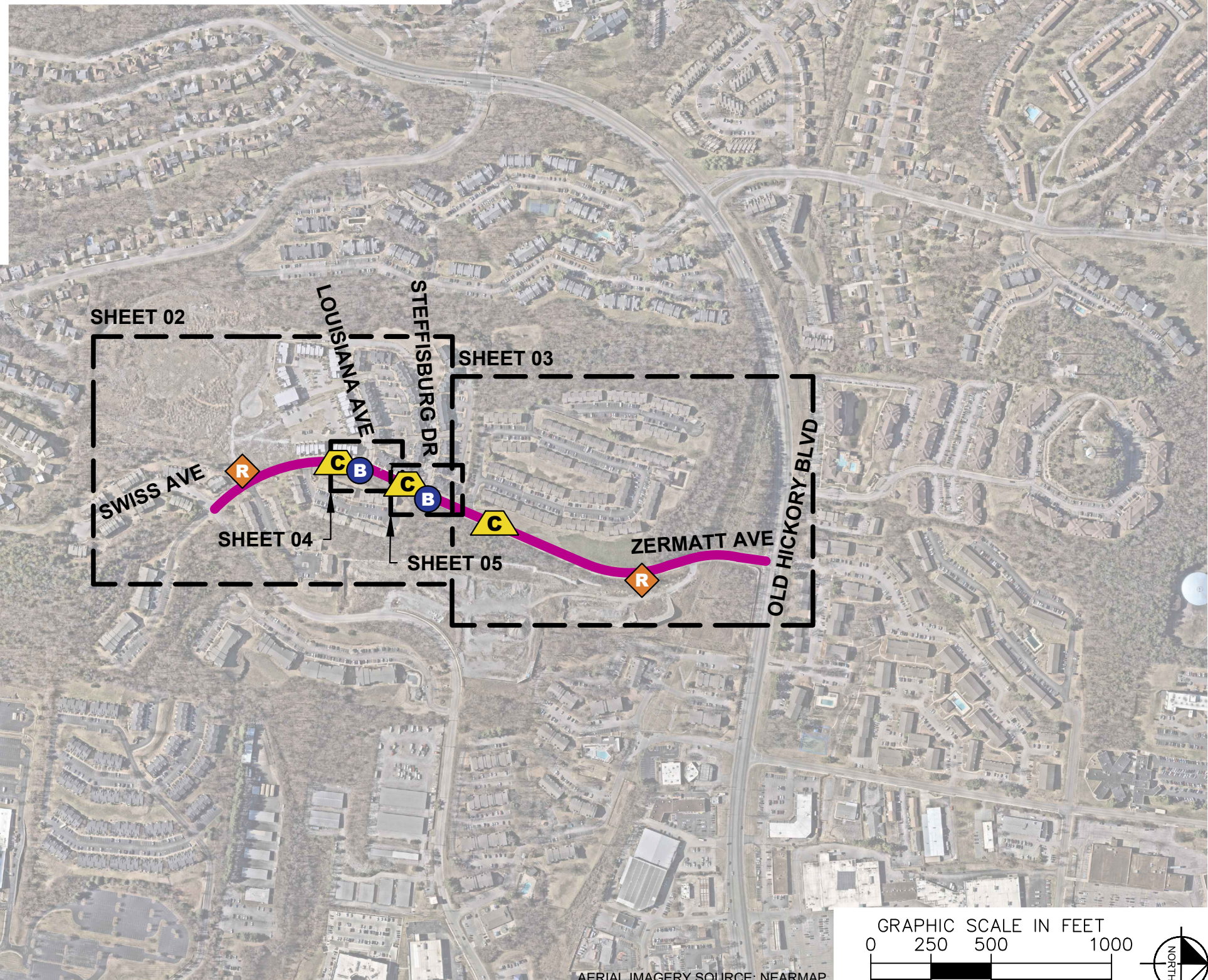
PAVEMENT MARKINGS AND DELINEATORS

4" WHITE FLEXIBLE DELINEATOR	16
4" DOUBLE SOLID WHITE LINE (LF)	220
6" SOLID WHITE LINE (LF)	190

NOTE: ALL LOCATIONS ARE REFERENCED FROM CENTERLINE OF DRIVEWAYS OR OTHER LANDMARKS TO THE CENTER OF SPEED CUSHIONS OR SIGNS.

LEGEND

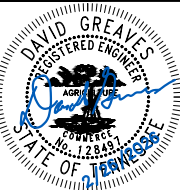
-  LIMITS OF TRAFFIC CALMING PROJECT
-  SPEED CUSHIONS
-  RADAR FEEDBACK SIGN
-  BULB-OUTS



AERIAL IMAGERY SOURCE: NEARMAP



ZERMATT AVENUE
TRAFFIC CALMING
NASHVILLE, TN



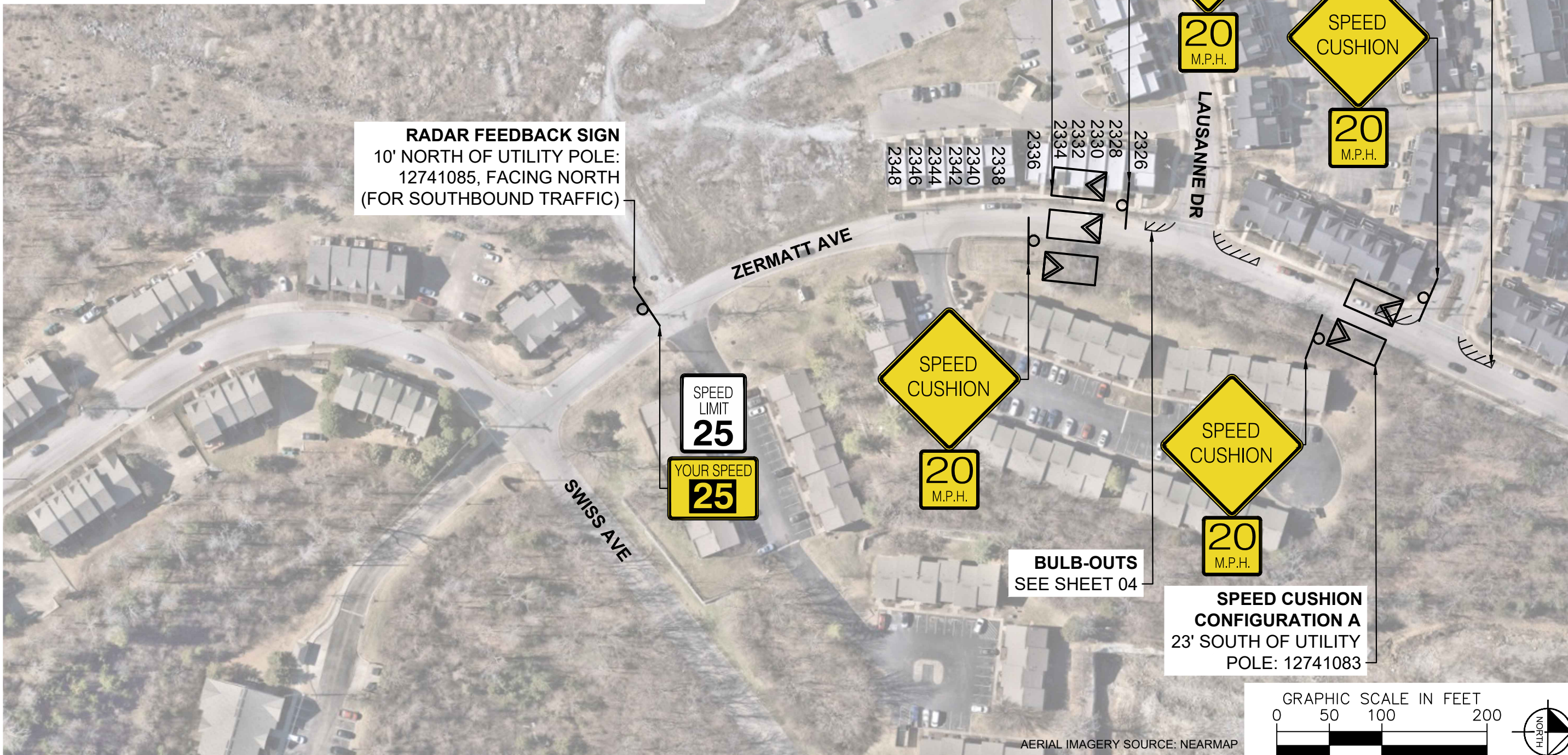
DESIGNED BY:	DJG
DRAWN BY:	KMZ
CHECKED BY:	NDOT
DATE:	2/28/2026
KIMLEY-HORN PROJECT NO. 118800066	

KEY
SHEET NUMBER
01

SPEED CUSHIONS



RADAR FEEDBACK SIGN



RADAR FEEDBACK SIGN
10' NORTH OF UTILITY POLE:
12741085, FACING NORTH
(FOR SOUTHBOUND TRAFFIC)

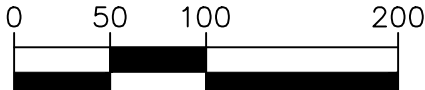
SPEED CUSHION CONFIGURATION C
IN FRONT OF ENTRANCE
OF 2332 ZERMATT AVE

BULB-OUTS
SEE SHEET 05

BULB-OUTS
SEE SHEET 04

SPEED CUSHION CONFIGURATION A
23' SOUTH OF UTILITY
POLE: 12741083

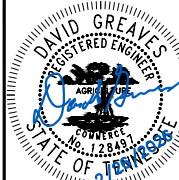
GRAPHIC SCALE IN FEET



AERIAL IMAGERY SOURCE: NEARMAP



ZERMATT AVENUE
TRAFFIC CALMING
NASHVILLE, TN



DESIGNED BY:	DJG
DRAWN BY:	KMZ
CHECKED BY:	NDOT
DATE:	2/28/2026
KIMLEY-HORN PROJECT NO. 118900066	

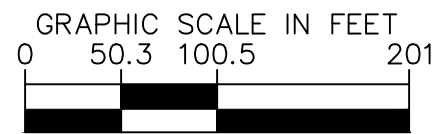
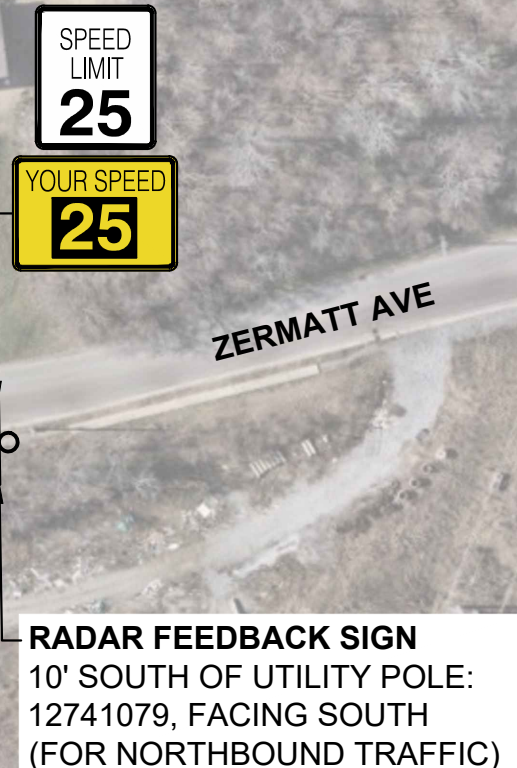
CONCEPT

SHEET NUMBER
02

SPEED CUSHIONS



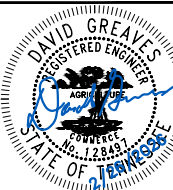
RADAR FEEDBACK SIGN



AERIAL IMAGERY SOURCE: NEARMAP



**ZERMATT AVENUE
TRAFFIC CALMING**
NASHVILLE, TN



DESIGNED BY:	DJG
DRAWN BY:	KMZ
CHECKED BY:	NDOT
DATE:	2/28/2026
KIMLEY-HORN PROJECT NO. 118800066	

CONCEPT
SHEET NUMBER
03

This document, together with the concepts and designs presented herein, is intended only for the specific purpose and client for which it was prepared. Reuse of and improper reliance on this document without written authorization and adaptation by Kimley-Horn and Associates, Inc. shall be without liability to Kimley-Horn and Associates, Inc.



TERMINATE STRIPING AT EXISTING "NO PARKING HERE TO CORNER" SIGN



LAUSANNE DR

ZERMATT AVE

22.0'

8.0'

R20.0'

R20.0'

4" DOUBLE SOLID WHITE LINE

FLEXIBLE DELINEATORS (TYP.) MAX SPACING IN RADII: 5' MAX SPACING: 10'

6" SOLID WHITE LINE (TYP.), 10' SPACING



22.0'

8.0'

TERMINATE STRIPING AT EXISTING "NO PARKING HERE TO CORNER" SIGN

NOTE: ALL PAVEMENT MARKINGS CONFLICTING WITH PROPOSED DESIGN SHALL BE REMOVED.

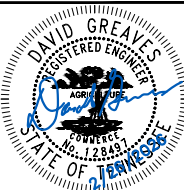
GRAPHIC SCALE IN FEET



AERIAL IMAGERY SOURCE: NEARMAP



ZERMATT AVENUE
TRAFFIC CALMING
NASHVILLE, TN

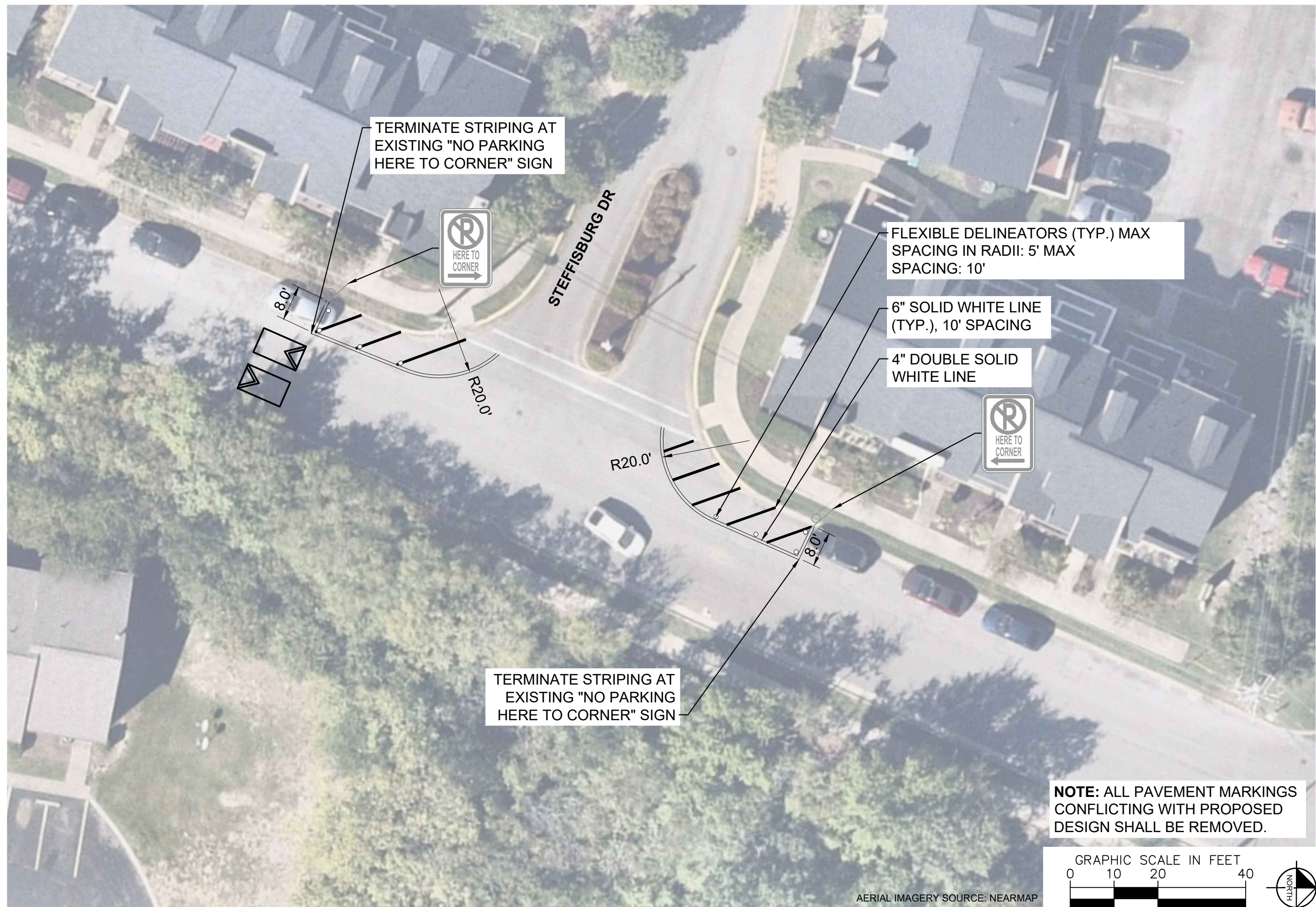


DESIGNED BY:	DJG
DRAWN BY:	KMZ
CHECKED BY:	NDOT
DATE:	2/26/2026
KIMLEY-HORN PROJECT NO.:	118900066

CONCEPT

SHEET NUMBER
04

This document, together with the concepts and designs presented herein, is intended only for the specific purpose and client for which it was prepared. Reuse of and improper reliance on this document without written authorization and adaptation by Kimley-Horn and Associates, Inc. shall be without liability to Kimley-Horn and Associates, Inc.



TERMINATE STRIPING AT EXISTING "NO PARKING HERE TO CORNER" SIGN



8.0'

R20.0'

STEFFISBURG DR

FLEXIBLE DELINEATORS (TYP.) MAX SPACING IN RADII: 5' MAX SPACING: 10'

6" SOLID WHITE LINE (TYP.), 10' SPACING

4" DOUBLE SOLID WHITE LINE



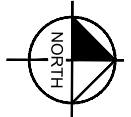
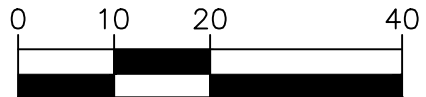
R20.0'

8.0'

TERMINATE STRIPING AT EXISTING "NO PARKING HERE TO CORNER" SIGN

NOTE: ALL PAVEMENT MARKINGS CONFLICTING WITH PROPOSED DESIGN SHALL BE REMOVED.

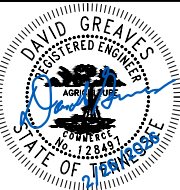
GRAPHIC SCALE IN FEET



AERIAL IMAGERY SOURCE: NEARMAP



ZERMATT AVENUE
TRAFFIC CALMING
NASHVILLE, TN



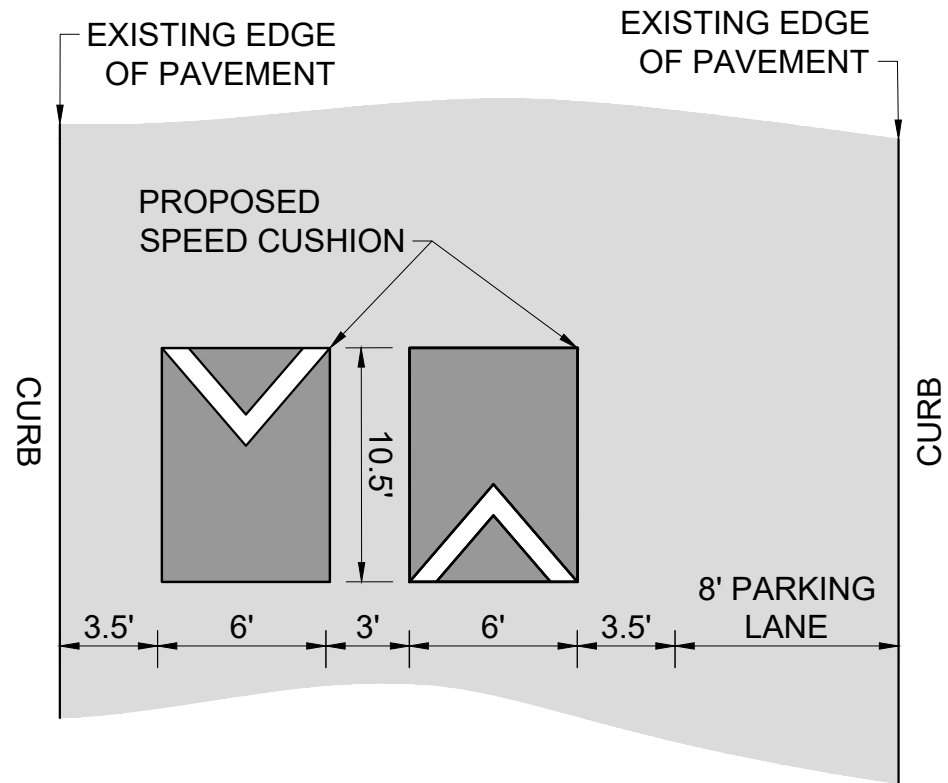
DESIGNED BY:	DJG
DRAWN BY:	KMZ
CHECKED BY:	NDOT
DATE:	2/28/2026
KIMLEY-HORN PROJECT NO. 118900066	

CONCEPT

SHEET NUMBER
05

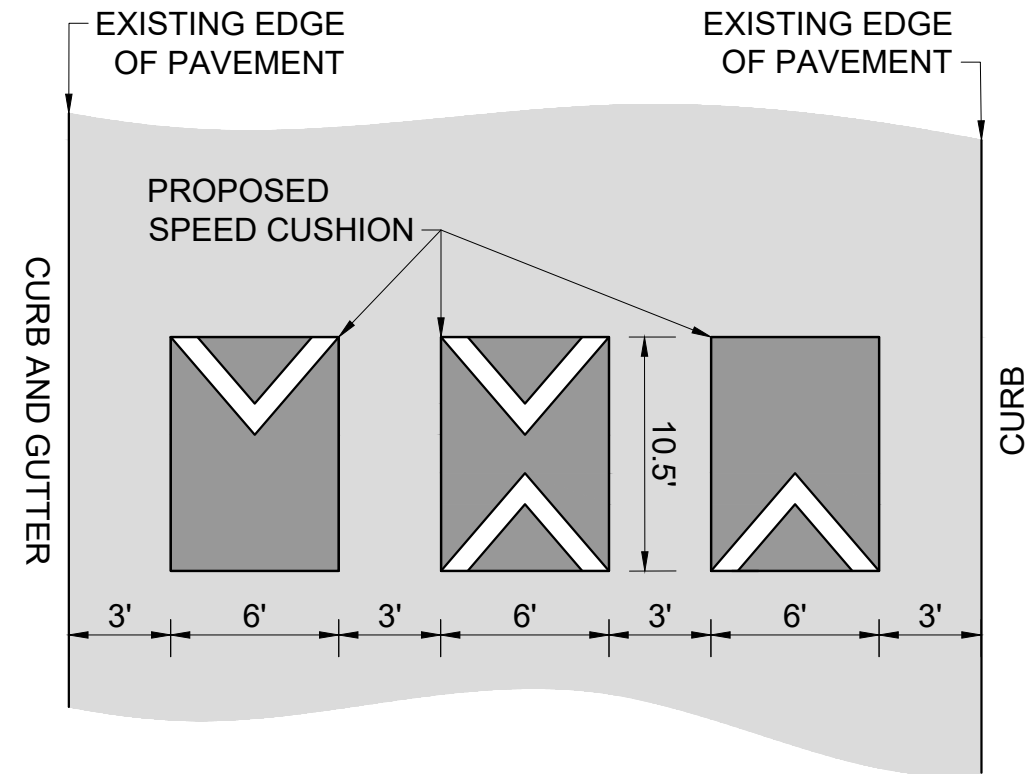
CONFIGURATION A

PAVEMENT WIDTH: 30'



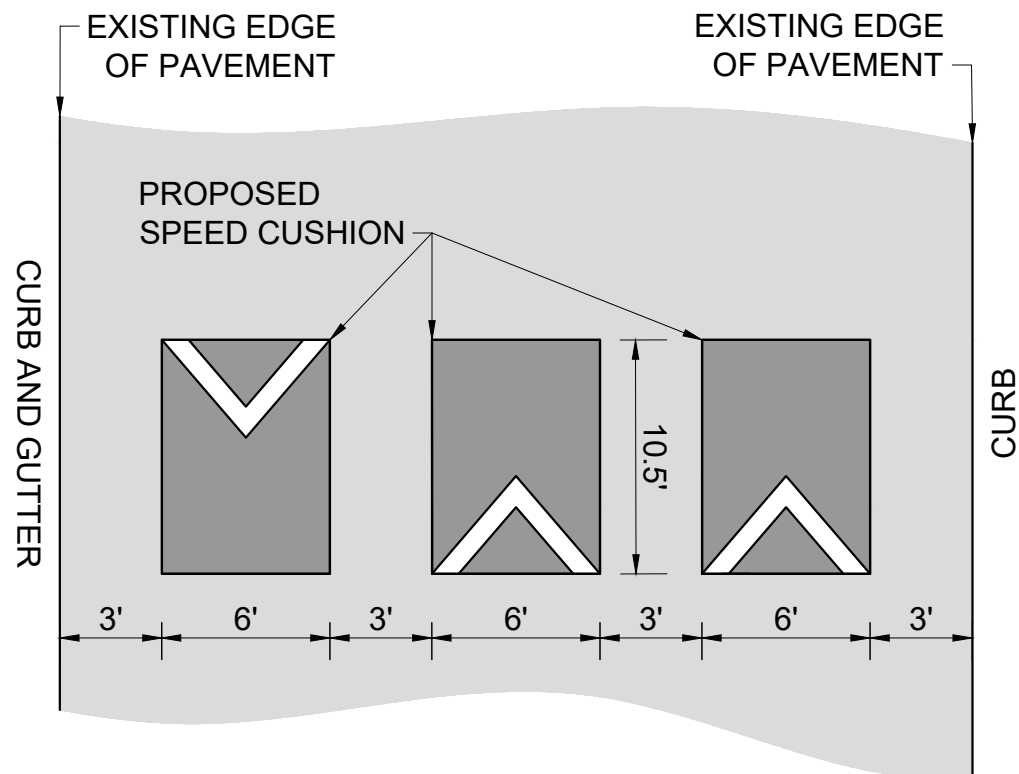
CONFIGURATION B

PAVEMENT WIDTH: 30'



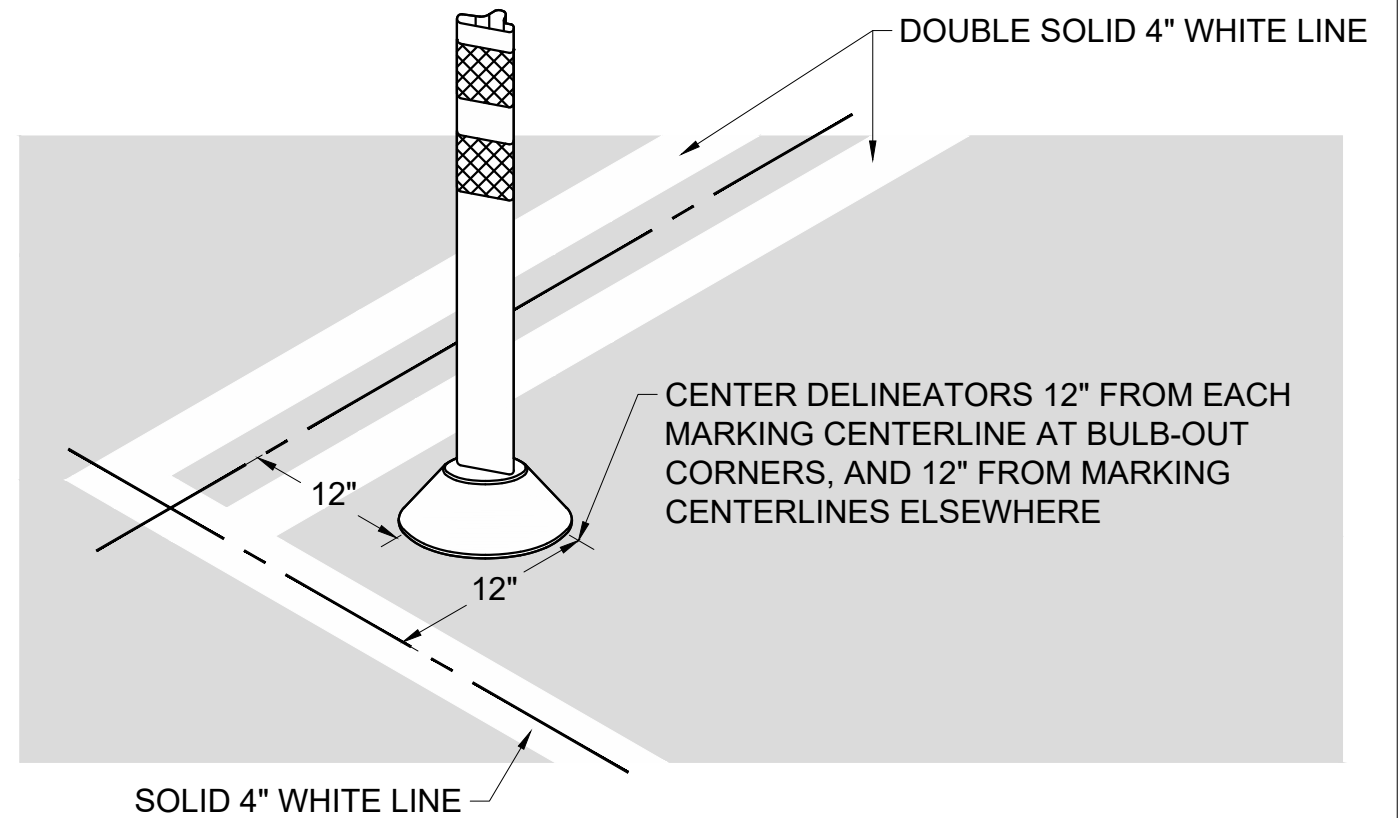
CONFIGURATION C

PAVEMENT WIDTH: 30'



DETAIL 01

DELINEATOR PLACEMENT



ZERMATT AVENUE
TRAFFIC CALMING
NASHVILLE, TN



DESIGNED BY:	DJG
DRAWN BY:	KMZ
CHECKED BY:	NDOT
DATE:	2/28/2026
KIMLEY-HORN PROJECT NO.:	118900066

DETAIL
SHEET NUMBER
06

This document, together with the concepts and designs presented herein, is intended only for the specific purpose and client for which it was prepared. Reuse of and improper reliance on this document without written authorization and adaptation by Kimley-Horn and Associates, Inc. shall be without liability to Kimley-Horn and Associates, Inc.