

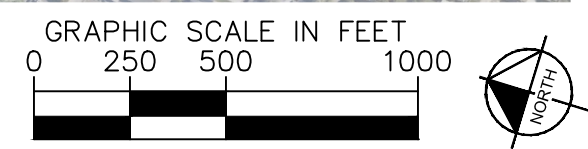
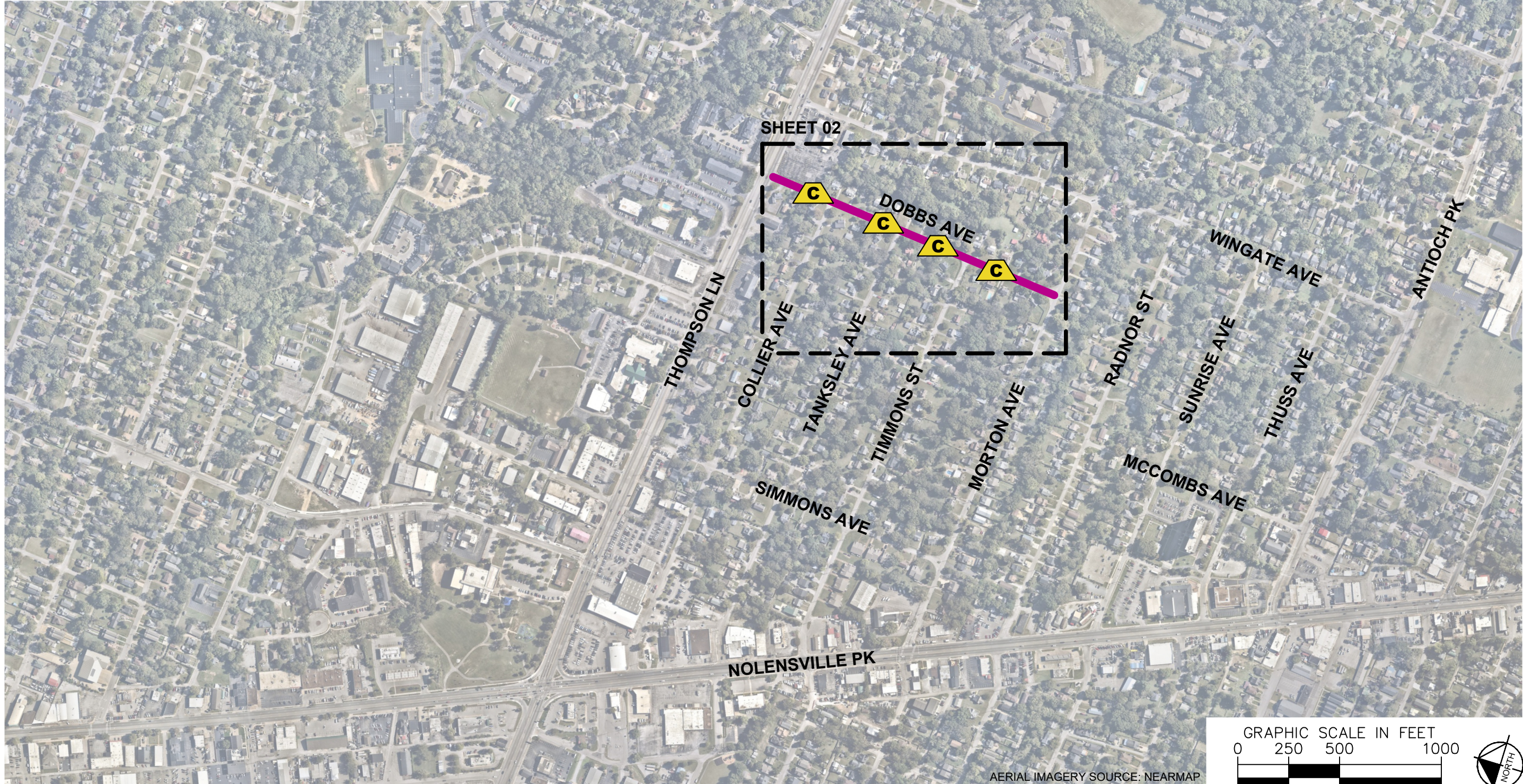
ESTIMATED QUANTITIES

SPEED CUSHIONS	
6' X 7' SPEED CUSHION WITH ONE ARROW	8
SIGNING	
W17-1 (VAR.) "SPEED CUSHION" SIGN (30" X 30")	8
W13-1P "20 M.P.H" SIGN (18" X 18")	8

NOTE: ALL LOCATIONS ARE REFERENCED FROM CENTERLINE OF DRIVEWAYS OR OTHER LANDMARKS TO THE CENTER OF SPEED CUSHIONS OR SIGNS.

LEGEND

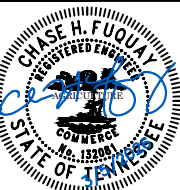
-  LIMITS OF TRAFFIC CALMING PROJECT
-  SPEED CUSHIONS



AERIAL IMAGERY SOURCE: NEARMAP



DOBBS AVENUE
TRAFFIC CALMING
NASHVILLE, TN

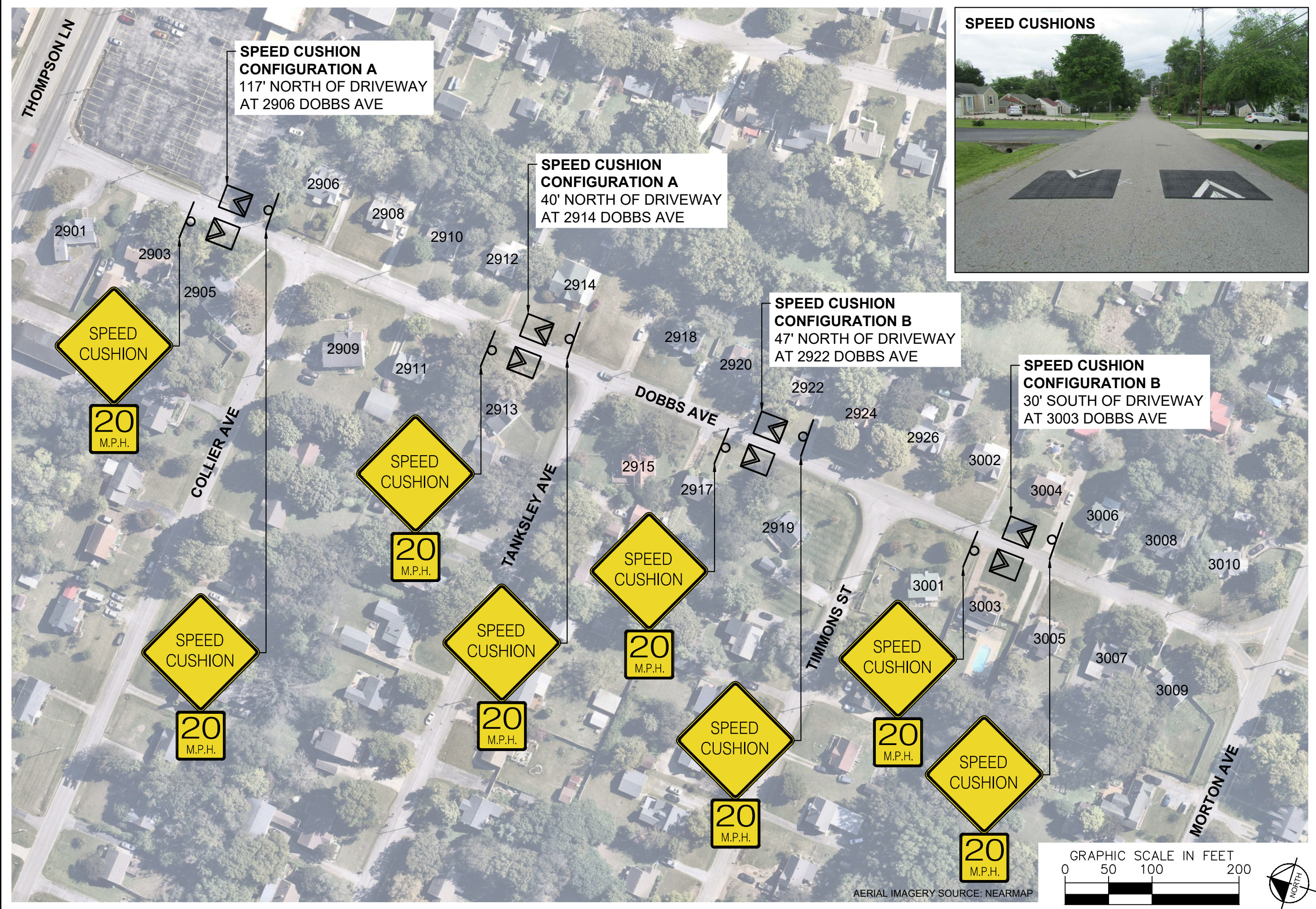


DESIGNED BY:	CHF
DRAWN BY:	KMZ
CHECKED BY:	NDOT
DATE:	3/5/2026
KIMLEY-HORN PROJECT NO.	118900066

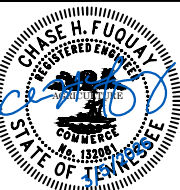
KEY
SHEET NUMBER
01

This document, together with the concepts and designs presented herein, is intended only for the specific purpose and client for which it was prepared. Reuse of and improper reliance on this document without written authorization and adaptation by Kimley-Horn and Associates, Inc. shall be without liability to Kimley-Horn and Associates, Inc.

This document, together with the concepts and designs presented herein, is intended only for the specific purpose and client for which it was prepared. Reuse of and improper reliance on this document without written authorization and adaptation by Kimley-Horn and Associates, Inc. shall be without liability to Kimley-Horn and Associates, Inc.



DOBBS AVENUE
TRAFFIC CALMING
NASHVILLE, TN

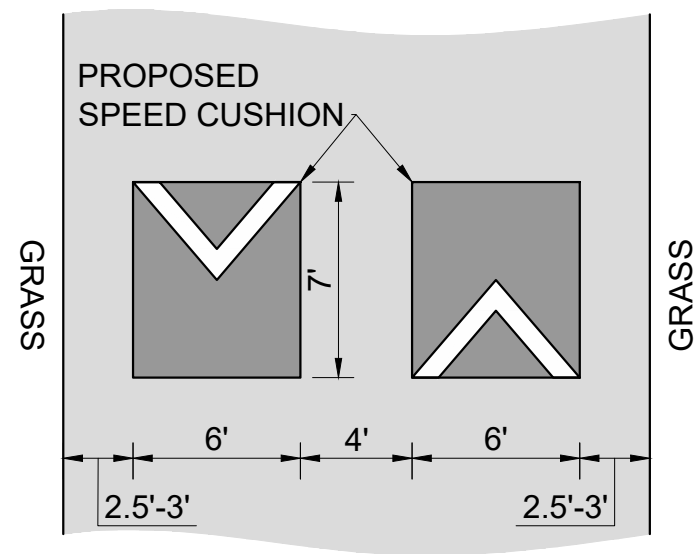


DESIGNED BY:	CHF
DRAWN BY:	KMZ
CHECKED BY:	NDOT
DATE:	3/9/2026
KIMLEY-HORN PROJECT NO.:	118900066

CONCEPT
SHEET NUMBER
02

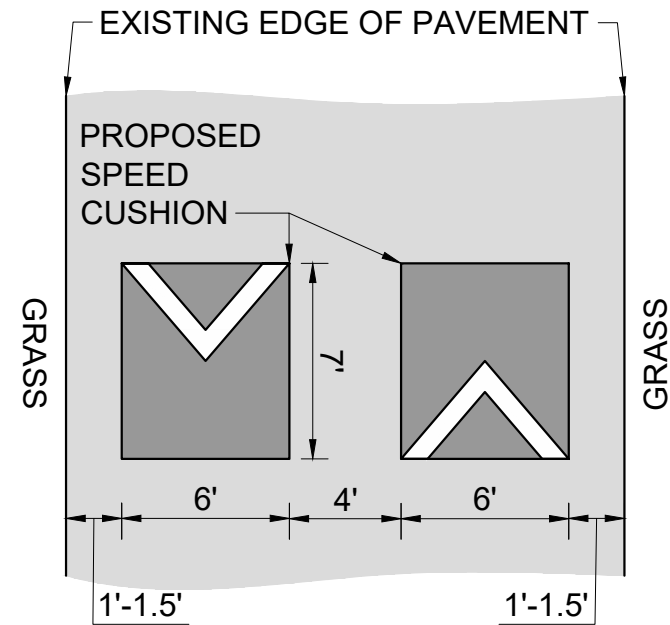
CONFIGURATION A

PAVEMENT WIDTH: 21'-22'



CONFIGURATION B

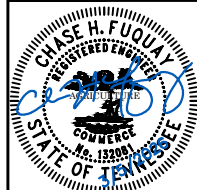
PAVEMENT WIDTH: 18'-19'



This document, together with the concepts and designs presented herein, is intended only for the specific purpose and client for which it was prepared. Reuse of and improper reliance on this document without written authorization and adaptation by Kimley-Horn and Associates, Inc. shall be without liability to Kimley-Horn and Associates, Inc.



DOBBS AVENUE
TRAFFIC CALMING
NASHVILLE, TN



DESIGNED BY: CHF
DRAWN BY: KMZ
CHECKED BY: NDOT
DATE: 3/5/2025
KIMLEY-HORN PROJECT NO. 118800066

DETAIL

SHEET NUMBER
03