

Average Daily Jail Population for February 2026

Davidson County Correctional Facilities

Criminal Justice Planning of Nashville and Davidson County

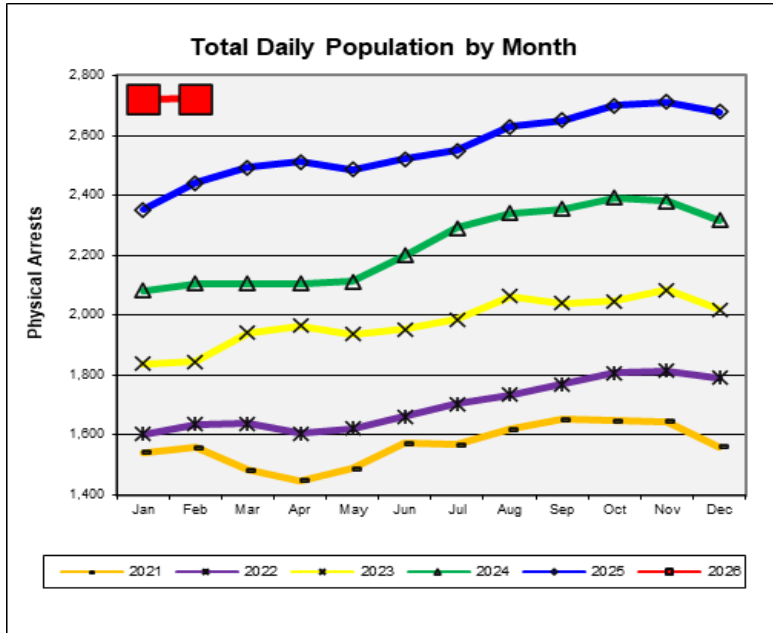
Overview

1. The ADP in February 2026 was 2,723, which was slightly 0.05% higher than the previous month. The ADP was 11.5% higher than in February 2025, when the population was 2,441.
2. The ADP for Pretrial Felons was 1,321, which was 1.1% lower than the previous month but was 4.2% higher than the ADP of 1,268 in February 2025.
3. The ADP for Pretrial Misdemeanants was 173, which was 7.0% lower than the previous month, but was 1.4% higher than the ADP of 171 in February 2025.
4. In February 2026 the ADP for Convicted Misdemeanants & DUIs (CM+DUI) was 186. That was 6.1% lower than the previous month but was 5.1% higher than the ADP of 177 in February 2025.
5. The ADP for Locally Sentenced Felons (LSF) was 575. That was 3.9% higher than the previous month and was 27.0% higher than February 2025 when it was 452.
6. State Sentenced Felons (TDOC) had an ADP of 183 in February 2026. That was 3.2% higher than the previous month and was 48.9% higher than February 2025 when the ADP was 123.
7. The average daily male population increased to 2,425 (+0.5%). The female daily population was 298, a 3.3% decline below the previous month.
8. LSF inmates were 21.1% of the ADP, while Pretrial Felons (PTF) made up 48.5% of the ADP in February 2026.
9. Four Davidson County correctional facilities were over capacity during February 2026: DDC (105.3%), CDM (102.2%), CDF (115.3%), and MCC (108.3%).
10. The ADP of 2,723 for all DCSO facilities in February 2026 was 102.7% of the total system capacity of 2,650 beds.
11. There were 1,951 adult physical arrests made in February 2026. That was 7.5% more arrests than the previous month and there were 9.5% more arrests than in February 2025.

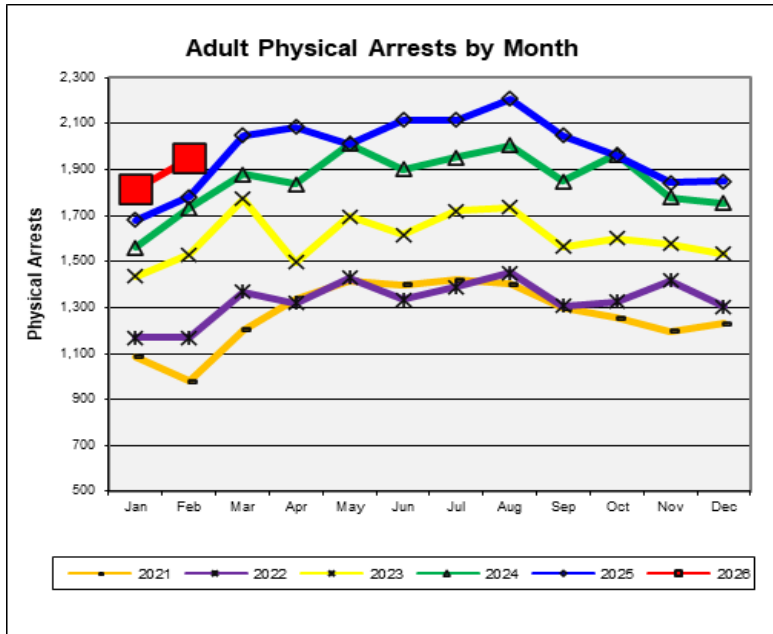
Disclaimer: All reports and other documents generated by Criminal Justice Planning are based on information drawn from databases owned and maintained by other agencies of state and local government. Therefore, Criminal Justice Planning cannot guarantee, or assume responsibility for, the accuracy or completeness of the data or information reflected in any reports or other documents.

Charts of Five-Year Trends

Average Daily Population by Month



Adult Physical Arrests by Month



Source: DCSO Penjail data representing the 11:00pm facility count.

Average Daily Population (ADP) – Current Year Compared to Previous Year

Total All Classifications

Month	ADP 2025	ADP 2026	Percent Change from Previous Month	Percent Change from Previous Year
Jan	2,352	2,721	1.5%	15.7%
Feb	2,441	2,723	0.05%	11.5%
Mar	2,493	-	-	-
Apr	2,512	-	-	-
May	2,486	-	-	-
Jun	2,522	-	-	-
Jul	2,550	-	-	-
Aug	2,629	-	-	-
Sep	2,651	-	-	-
Oct	2,701	-	-	-
Nov	2,712	-	-	-
Dec	2,680	-	-	-
Average	2,561	2,722	0.8%	13.6%

Annual Percent Change

Years	Percent Change
2025-2026	6.3%

Pretrial Felons

Month	ADP 2025	ADP 2026	Percent Change from Previous Month	Percent Change from Previous Year
Jan	1,242	1,335	3.0%	7.5%
Feb	1,268	1,321	-1.1%	4.2%
Mar	1,254	-	-	-
Apr	1,266	-	-	-
May	1,235	-	-	-
Jun	1,270	-	-	-
Jul	1,300	-	-	-
Aug	1,321	-	-	-
Sep	1,296	-	-	-
Oct	1,296	-	-	-
Nov	1,312	-	-	-
Dec	1,296	-	-	-
Average	1,280	1,328	1.0%	5.9%

Annual Percent Change

Years	Percent Change
2025-2026	3.8%

Source: DCSO Penjail data representing the 11:00pm facility count.

Average Daily Population (ADP) – Current Year Compared to Previous Year

Pretrial Misdemeanants

Month	ADP 2025	ADP 2026	Percent Change from Previous Month	Percent Change from Previous Year
Jan	158	187	-1.8%	17.9%
Feb	171	173	-7.0%	1.4%
Mar	180	-	-	-
Apr	171	-	-	-
May	168	-	-	-
Jun	188	-	-	-
Jul	193	-	-	-
Aug	203	-	-	-
Sep	193	-	-	-
Oct	191	-	-	-
Nov	197	-	-	-
Dec	190	-	-	-
Average	184	180	-4.4%	9.7%

Annual Percent Change

Years	Percent Change
2025-2026	-2.0%

Convicted Misdemeanants and DUI

Month	ADP 2025	ADP 2026	Percent Change from Previous Month	Percent Change from Previous Year
Jan	159	198	-4.4%	24.7%
Feb	177	186	-6.1%	5.1%
Mar	202	-	-	-
Apr	210	-	-	-
May	216	-	-	-
Jun	205	-	-	-
Jul	188	-	-	-
Aug	205	-	-	-
Sep	215	-	-	-
Oct	227	-	-	-
Nov	222	-	-	-
Dec	207	-	-	-
Average	203	192	-5.3%	14.9%

Annual Percent Change

Years	Percent Change
2025-2026	-5.2%

Source: DCSO Penjail data representing the 11:00pm facility count.

Average Daily Population (ADP) – Current Year Compared to Previous Year

Locally Sentenced Felons

Month	ADP 2025	ADP 2026	Percent Change from Previous Month	Percent Change from Previous Year
Jan	438	553	-2.4%	26.2%
Feb	452	575	3.9%	27.0%
Mar	483	-	-	-
Apr	483	-	-	-
May	501	-	-	-
Jun	495	-	-	-
Jul	490	-	-	-
Aug	509	-	-	-
Sep	529	-	-	-
Oct	537	-	-	-
Nov	549	-	-	-
Dec	567	-	-	-
Average	503	564	0.7%	26.6%

Annual Percent Change

Years	Percent Change
2025-2026	12.2%

Probation Violator Felons

Month	ADP 2025	ADP 2026	Percent Change from Previous Month	Percent Change from Previous Year
Jan	185	225	18.7%	21.6%
Feb	199	234	4.0%	17.4%
Mar	199	-	-	-
Apr	208	-	-	-
May	195	-	-	-
Jun	191	-	-	-
Jul	198	-	-	-
Aug	193	-	-	-
Sep	198	-	-	-
Oct	201	-	-	-
Nov	200	-	-	-
Dec	189	-	-	-
Average	196	229	11.4%	19.5%

Annual Percent Change

Years	Percent Change
2025-2026	16.8%

Source: DCSO Penjail data representing the 11:00pm facility count.

Average Daily Population (ADP) – Current Year Compared to Previous Year

Probation Violator Misdemeanants

Month	ADP 2025	ADP 2026	Percent Change from Previous Month	Percent Change from Previous Year
Jan	41	40	-1.1%	-0.6%
Feb	42	42	3.8%	-0.3%
Mar	49	-	-	-
Apr	44	-	-	-
May	43	-	-	-
Jun	38	-	-	-
Jul	49	-	-	-
Aug	45	-	-	-
Sep	38	-	-	-
Oct	47	-	-	-
Nov	48	-	-	-
Dec	41	-	-	-
Average	44	41	1.4%	-0.4%

Annual Percent Change

Years	Percent Change
2025-2026	-5.9%

State Sentenced Felons to TN Department of Corrections (TDOC)

Month	ADP 2025	ADP 2026	Percent Change from Previous Month	Percent Change from Previous Year
Jan	122	177	-3.0%	45.0%
Feb	123	183	3.2%	48.9%
Mar	118	-	-	-
Apr	122	-	-	-
May	120	-	-	-
Jun	127	-	-	-
Jul	123	-	-	-
Aug	145	-	-	-
Sep	174	-	-	-
Oct	194	-	-	-
Nov	178	-	-	-
Dec	182	-	-	-
Average	144	180	0.1%	47.0%

Annual Percent Change

Years	Percent Change
2025-2026	24.8%

Source: DCSO Penjail data representing the 11:00pm facility count.

Average Daily Population (ADP) – Current Year Compared to Previous Year

All Other Inmates

Month	ADP 2025	ADP 2026	Percent Change from Previous Month	Percent Change from Previous Year
Jan	7	6	-14.5%	-18.6%
Feb	8	9	46.6%	5.5%
Mar	9	-	-	-
Apr	7	-	-	-
May	7	-	-	-
Jun	8	-	-	-
Jul	8	-	-	-
Aug	8	-	-	-
Sep	8	-	-	-
Oct	8	-	-	-
Nov	7	-	-	-
Dec	7	-	-	-
Average	8	7	16.0%	-6.6%

Annual Percent Change

Years	Percent Change
2025-2026	-5.3%

Source: DCSO Penjail data representing the 11:00pm facility count.

Average Daily Population by Gender – Current Year Compared to Previous Year

Average Daily Population (ADP) of Males

Month	ADP 2025	ADP 2026	Percent Change from Previous Month	Percent Change from Previous Year
Jan	2,099	2,414	1.6%	15.0%
Feb	2,178	2,425	0.5%	11.3%
Mar	2,227	-	-	-
Apr	2,244	-	-	-
May	2,215	-	-	-
Jun	2,253	-	-	-
Jul	2,270	-	-	-
Aug	2,320	-	-	-
Sep	2,337	-	-	-
Oct	2,393	-	-	-
Nov	2,398	-	-	-
Dec	2,375	-	-	-
Average	2,276	2,419	1.0%	13.2%

Annual Percent Change

Years	Percent Change
2025-2026	6.3%

Average Daily Population (ADP) of Females

Month	ADP 2025	ADP 2026	Percent Change from Previous Month	Percent Change from Previous Year
Jan	253	308	0.8%	21.4%
Feb	263	298	-3.3%	13.2%
Mar	266	-	-	-
Apr	268	-	-	-
May	271	-	-	-
Jun	269	-	-	-
Jul	280	-	-	-
Aug	309	-	-	-
Sep	314	-	-	-
Oct	308	-	-	-
Nov	314	-	-	-
Dec	305	-	-	-
Average	285	303	-1.2%	17.3%

Annual Percent Change

Years	Percent Change
2025-2026	6.2%

Source: DCSO Penjail data representing the 11:00pm facility count.

Percentage of Average Daily Population (ADP)

Percentage of Each Inmate Classification in the ADP

Month 2026	ADP Total	PTF	PTM	CM and DUI	LSF	PVF	PVM	OTHER	TDOC
Jan	2,721	49.1%	6.9%	7.3%	20.3%	8.3%	1.5%	0.2%	6.5%
Feb	2,723	48.5%	6.4%	6.8%	21.1%	8.6%	1.5%	0.3%	6.7%
Mar	-	-	-	-	-	-	-	-	-
Apr	-	-	-	-	-	-	-	-	-
May	-	-	-	-	-	-	-	-	-
Jun	-	-	-	-	-	-	-	-	-
Jul	-	-	-	-	-	-	-	-	-
Aug	-	-	-	-	-	-	-	-	-
Sep	-	-	-	-	-	-	-	-	-
Oct	-	-	-	-	-	-	-	-	-
Nov	-	-	-	-	-	-	-	-	-
Dec	-	-	-	-	-	-	-	-	-
Average	2,722	48.8%	6.6%	7.1%	20.7%	8.4%	1.5%	0.3%	6.6%

Notes:

ADP = Average Daily Population

PTF = Pretrial Felons

PTM = Pretrial Misdemeanants

CM and DUI = Convicted Misdemeanants and DUIs

LSF = Locally Sentenced Felons

PVF = Probation Violators Felons

PVM = Probation Violators Misdemeanants

OTHER = All other inmate classifications including Federal, Civil, Detainers, None

TDOC = State Sentenced Felons to TN Department of Corrections

Source: DCSO Penjail data representing the 11:00pm facility count.

Average Daily Population (ADP) By Facility

DDC – Downtown Detention Center (formerly Criminal Justice Center) (a)

Capacity = 762

2026 Month	ADP	Monthly Change	Percent Capacity
Jan	793	3.1%	104.1%
Feb	802	1.1%	105.3%
Mar	-	-	-
Apr	-	-	-
May	-	-	-
Jun	-	-	-
Jul	-	-	-
Aug	-	-	-
Sep	-	-	-
Oct	-	-	-
Nov	-	-	-
Dec	-	-	-
Average	798	2.1%	104.7%

CDM – Correctional Development Center Male (f)

Capacity = 768

2026 Month	ADP	Monthly Change	Percent Capacity
Jan	788	1.4%	102.5%
Feb	785	-0.3%	102.2%
Mar	-	-	-
Apr	-	-	-
May	-	-	-
Jun	-	-	-
Jul	-	-	-
Aug	-	-	-
Sep	-	-	-
Oct	-	-	-
Nov	-	-	-
Dec	-	-	-
Average	786	0.5%	102.4%

Average Daily Population (ADP) By Facility

CDF – Correctional Development Center Female (b)

Capacity = 252

2026 Month	ADP	Monthly Change	Percent Capacity
Jan	301	0.6%	119.4%
Feb	290	-3.4%	115.3%
Mar	-	-	-
Apr	-	-	-
May	-	-	-
Jun	-	-	-
Jul	-	-	-
Aug	-	-	-
Sep	-	-	-
Oct	-	-	-
Nov	-	-	-
Dec	-	-	-
Average	296	-1.4%	117.3%

MCC – Maximum Correctional Center (b)

Capacity = 508

2026 Month	ADP	Monthly Change	Percent Capacity
Jan	553	-1.1%	108.8%
Feb	550	-0.4%	108.3%
Mar	-	-	-
Apr	-	-	-
May	-	-	-
Jun	-	-	-
Jul	-	-	-
Aug	-	-	-
Sep	-	-	-
Oct	-	-	-
Nov	-	-	-
Dec	-	-	-
Average	552	-0.8%	108.6%

Average Daily Population (ADP) By Facility

BCC – Behavioral Care Center (h)

Capacity = 60

2026 Month	ADP	Monthly Change	Percent Capacity
Jan	17	-2.7%	28.5%
Feb	22	30.7%	37.3%
Mar	-	-	-
Apr	-	-	-
May	-	-	-
Jun	-	-	-
Jul	-	-	-
Aug	-	-	-
Sep	-	-	-
Oct	-	-	-
Nov	-	-	-
Dec	-	-	-
Average	20	14.0%	32.9%

ANX – Annex (formerly Offender Re-Entry Center) (g)

Capacity = 300

2026 Month	ADP	Monthly Change	Percent Capacity
Jan	270	4.7%	89.8%
Feb	272	0.9%	90.6%
Mar	-	-	-
Apr	-	-	-
May	-	-	-
Jun	-	-	-
Jul	-	-	-
Aug	-	-	-
Sep	-	-	-
Oct	-	-	-
Nov	-	-	-
Dec	-	-	-
Average	271	2.8%	90.2%

Source: DCSO Penjail data representing the 11:00pm facility count.

Average Daily Population (ADP) By Facility

HDC – Hill Detention Center (e)

Capacity = 0

2026 Month	ADP	Monthly Change	Percent Capacity
Jan	0	0.0%	n/a
Feb	0	0.0%	n/a
Mar	-	-	-
Apr	-	-	-
May	-	-	-
Jun	-	-	-
Jul	-	-	-
Aug	-	-	-
Sep	-	-	-
Oct	-	-	-
Nov	-	-	-
Dec	-	-	-
Average	0	0.0%	n/a

MDF – Metro Davidson County Detention Facility (c)

Capacity = 0

2026 Month	ADP	Monthly Change	Percent Capacity
Jan	0	0.0%	n/a
Feb	0	0.0%	n/a
Mar	-	-	-
Apr	-	-	-
May	-	-	-
Jun	-	-	-
Jul	-	-	-
Aug	-	-	-
Sep	-	-	-
Oct	-	-	-
Nov	-	-	-
Dec	-	-	-
Average	0	0.0%	n/a

Average Daily Population (ADP) by Facility

Total All Facilities (d)

Capacity = 2,650

2026 Month	ADP	Monthly Change	Percent Capacity	System Capacity
Jan	2,721	1.5%	102.7%	2,650
Feb	2,723	0.0%	102.7%	2,650
Mar	-	-	-	2,650
Apr	-	-	-	2,650
May	-	-	-	2,650
Jun	-	-	-	2,650
Jul	-	-	-	2,650
Aug	-	-	-	2,650
Sep	-	-	-	2,650
Oct	-	-	-	2,650
Nov	-	-	-	2,650
Dec	-	-	-	2,650
Average	2,722	0.8%	102.7%	2,650

Last Date Facility was Below 100% Capacity

As of 2/28/2026

Facility	Last Date Below Capacity	Current Consecutive Days Over Capacity
DDC	1/3/26	56
CDM	2/7/26	21
CDF	5/19/25	285
HDC	2/28/26	0
ANX	2/28/26	0
BCC	2/28/26	0
MCC	1/13/25	411
MDF	2/28/26	0

Source: DCSO Penjail data representing the 11:00pm facility count.

Average Daily Population (ADP) Facility Notes

Notes on Facility Capacity Changes

- (a) Capacity at CJC increased to 807 from 705 in October 2007 through recertification. Capacity decreased to 800 in November 2012 and again to 788 in August 2013. CJC closed for renovation on 8/13/16. On 4/16/2020 housing inmates began and was renamed DDC; new capacity is 762.
- (b) CDF opened in March 2006 when all female inmates were moved there from MDF. In May 2016 all females were moved out of CDF and into MDF; then in August 2016 CDF reopened as MCC (Maximum Correctional Center) and began housing male inmates because of renovations at CJC. The capacity at MCC remained at 508. In May 2020, MCC was renamed back to CDF and females were moved from MDF to CDF. Starting 6/25/2020, males testing positive for COVID19 were temporarily housed at CDF. Starting December 2020 due to the temporary closing of MDF, females were housed at CDF (capacity 252), males were housed at MCC (capacity 508).
- (c) Capacity for MDF increased to 1,092 from 892 on 11/1/2005 through recertification. It increased to 1,348 in June 2011. Locally sentenced felon females were moved there in July 2011. In May 2016 all-female inmates were moved to MDF because of renovations at CJC. In May 2020, females were moved out of MDF back to CDF. In December 2020, inmates were moved out of MDF into MCC, and the facility was temporarily closed by 12/7/2020. Starting Feb 2021, MDF was sometimes used to temporarily house inmates moved from other facilities due to environmental reasons; system capacity remained the same.
- (d) Total capacity for all facilities increased from 3,679 to 3,781 in October 2007; from 3,781 to 3,842 in December 2007; from 3,842 to 4,010 in February 2008, from 4,010 to 4,266 in June 2011. It decreased to 4,259 in November 2012, and again to 4,247 in August 2013. With the temporary closing of CJC in August 2016 due to renovations, the capacity became 3,459. In April 2019, ORC closed so the capacity decreased to 3,159. CJC reopened as DDC in April 2020, resulting in a new capacity of 3,921. In May 2020 the HDC closed, resulting in a capacity of 3,386. The capacity increased to 3,446 on 9/14/2020 with the opening of BCC. On 12/7/2020, system capacity decreased to 2,350 with the temporary closing of MDF and resulting changes to MCC and CDF. On 9/14/2025, total beds increased to 2,500 with the reopening of the ORC as ANX and increased again to 2,650 when ANX increased in November 2025.
- (e) Total capacity for HDC increased from 474 to 535 in December 2007. Booking functions were moved to HDC in August 2016 due to renovations at CJC, but the capacity remained at 535. HDC was closed on 5/6/2020 and all inmates were moved to DDC.
- (f) Total capacity for CDM increased from 600 to 768 in February 2008.
- (g) ORC temporarily closed in February 2011. It reopened in May 2016 to house inmates due to renovations at CJC; capacity was 300. ORC was closed on 4/7/2019. ORC reopened on 9/14/2025 with a capacity of 150; capacity increased to 300 on 11/16/25.
- (h) BCC opened on 9/14/2020 with a capacity of 60, comprised of 30 males and 30 females.

Source: DCSO Penjail data representing the 11:00pm facility count.

Physical Arrests

Number of Physical Arrests – Current Year Compared to Previous Year

Month	2025	2026	Monthly Percent Change	Yearly Percent Change	Percent Change Since January 2026
Jan	1,682	1,815	-1.9%	7.9%	n/a
Feb	1,782	1,951	7.5%	9.5%	7.5%
Mar	2,050	-	-	-	-
Apr	2,087	-	-	-	-
May	2,011	-	-	-	-
Jun	2,115	-	-	-	-
Jul	2,118	-	-	-	-
Aug	2,208	-	-	-	-
Sep	2,048	-	-	-	-
Oct	1,964	-	-	-	-
Nov	1,843	-	-	-	-
Dec	1,850	-	-	-	-
Total	23,758	3,766	2.8%	8.7%	7.5%

Number of Physical Arrests – Total Year to Date (YTD) Compared to Previous Year

Month	2025 Year to Date	2026 Year to Date	Percent Change from 2025 YTD to 2026 YTD
Jan	1,682	1,815	7.9%
Feb	3,464	3,766	8.7%
Mar	5,514	-	-
Apr	7,601	-	-
May	9,612	-	-
Jun	11,727	-	-
Jul	13,845	-	-
Aug	16,053	-	-
Sep	18,101	-	-
Oct	20,065	-	-
Nov	21,908	-	-
Dec	23,758	-	-

Notes:

The chart shows the number of adult physical arrests made in Davidson County. A physical arrest is a custodial arrest and represents an individual body regardless of the number of charges issued.

Expungements are removed.

Source: Metropolitan Nashville Police Department, data pulled on 3/18/2026.