

ESTIMATED QUANTITIES

SPEED CUSHIONS

6' X 10.5' SPEED CUSHION WITH ONE ARROW	8
---	---

6' X 10.5' SPEED CUSHION WITH DSYL	4
------------------------------------	---

SIGNING

W17-1 (VAR.) "SPEED CUSHION" SIGN (30" X 30")	4
---	---

W17-1 (VAR.) "SPEED CUSHIONS AHEAD" SIGN (30" X 30")	2
--	---

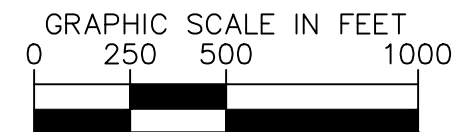
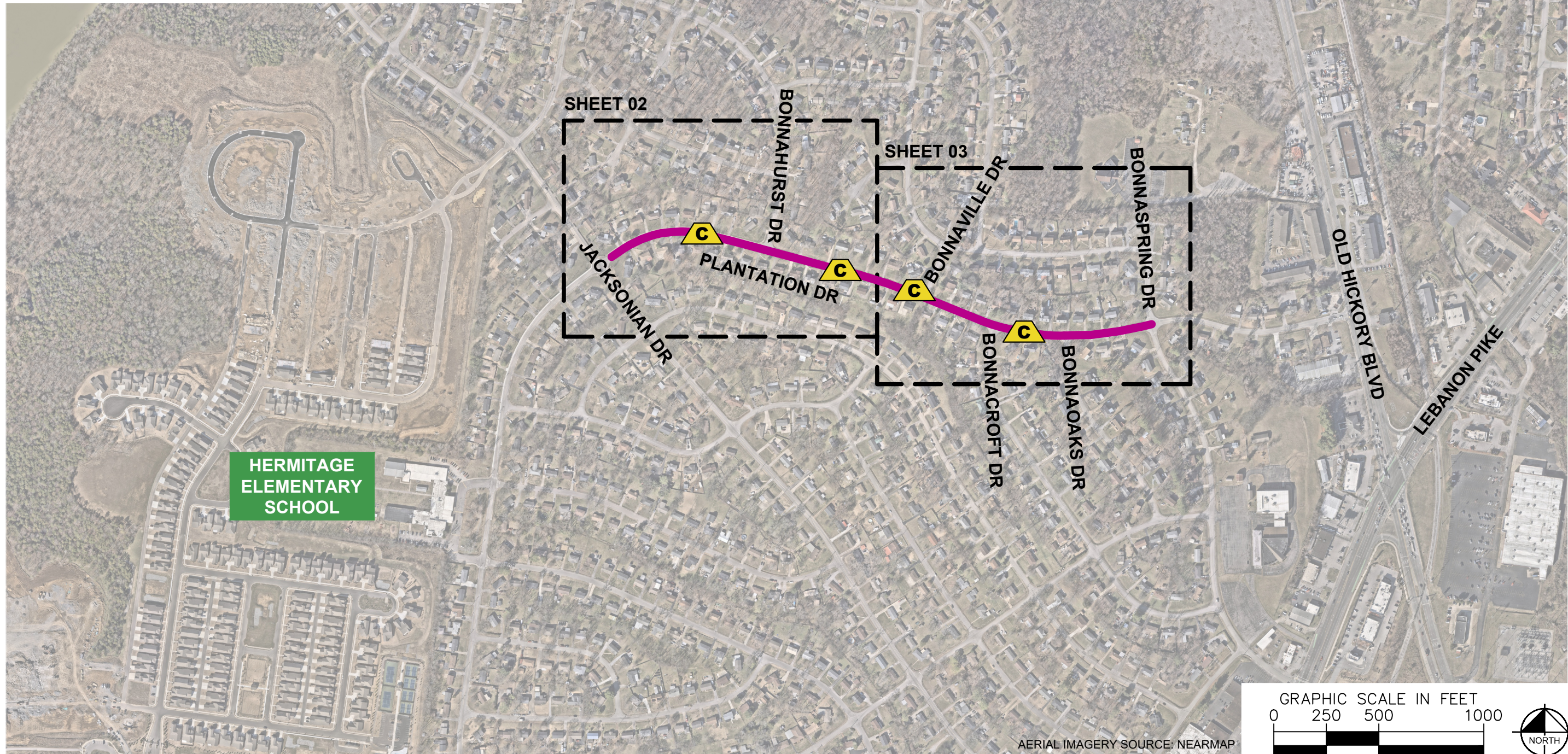
W13-1P "20 M.P.H" SIGN (18" X 18")	6
------------------------------------	---

NOTE: ALL LOCATIONS ARE REFERENCED FROM CENTERLINE OF DRIVEWAYS OR OTHER LANDMARKS TO THE CENTER OF SPEED CUSHIONS OR SIGNS.

LEGEND

 LIMITS OF TRAFFIC CALMING PROJECT

 SPEED CUSHIONS



AERIAL IMAGERY SOURCE: NEARMAP

NDOT

PLANTATION DRIVE
TRAFFIC CALMING
NASHVILLE, TN

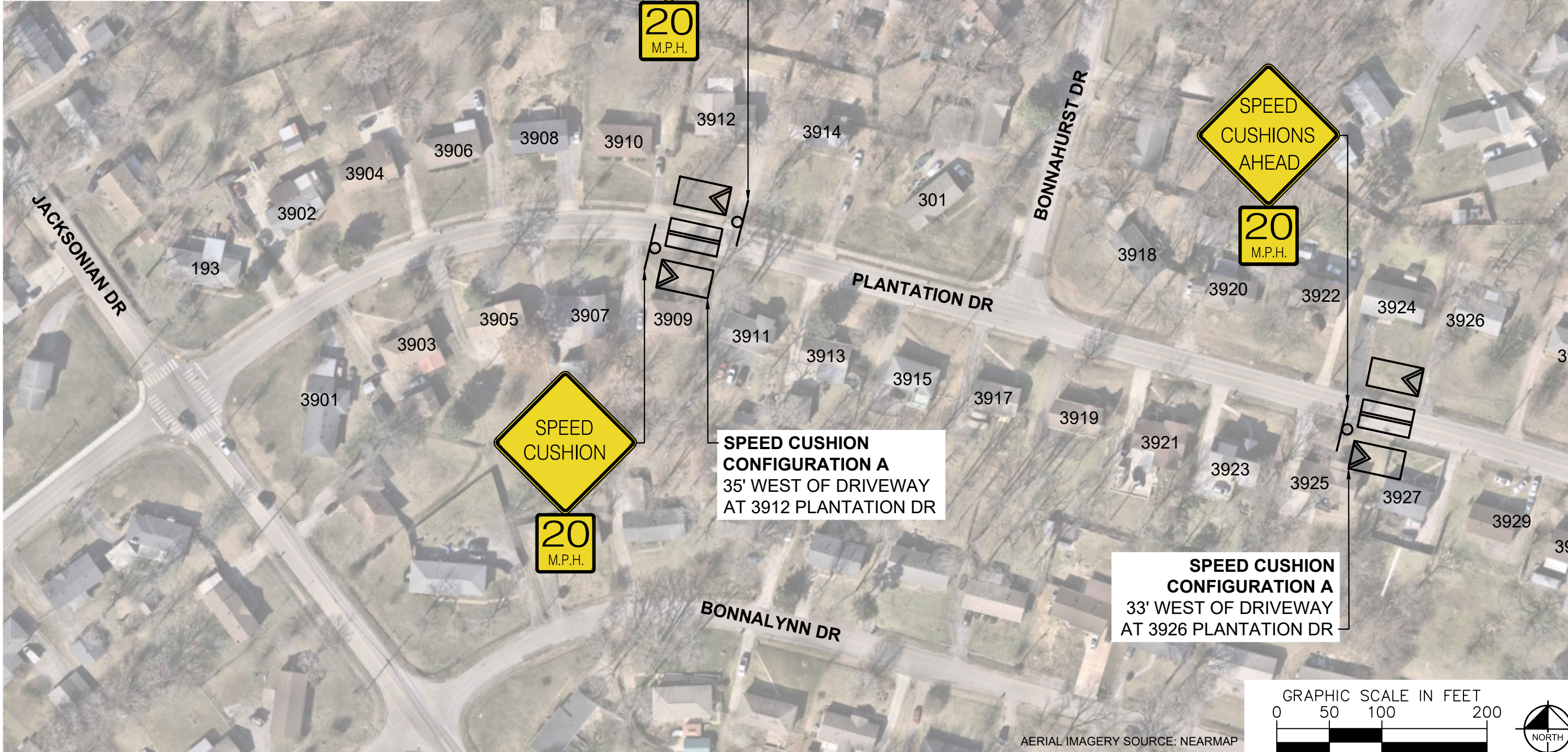


DESIGNED BY: J.L.H.
DRAWN BY: K.M.Z.
CHECKED BY: N.D.O.T.
DATE: 3/18/2026
KIMLEY-HORN PROJECT NO. 118900066

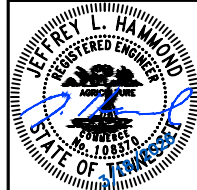
KEY

SHEET NUMBER
01

SPEED CUSHIONS



PLANTATION DRIVE
TRAFFIC CALMING
NASHVILLE, TN



DESIGNED BY:	JLH
DRAWN BY:	KMZ
CHECKED BY:	NDOT
DATE:	3/18/2026
KIMLEY-HORN PROJECT NO.:	11880006

CONCEPT
SHEET NUMBER
02

This document, together with the concepts and designs presented herein, is intended only for the specific purpose and client for which it was prepared. Reuse of and improper reliance on this document without written authorization and adaptation by Kimley-Horn and Associates, Inc. shall be without liability to Kimley-Horn and Associates, Inc.



SPEED CUSHION CONFIGURATION A
30' EAST OF DRIVEWAY
AT 3935 PLANTATION DR

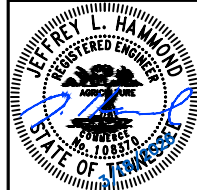
SPEED CUSHION CONFIGURATION A
30' WEST OF DRIVEWAY
AT 4000 PLANTATION DR



SPEED CUSHIONS

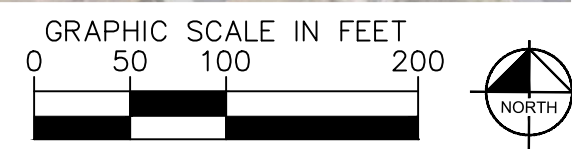


PLANTATION DRIVE
TRAFFIC CALMING
NASHVILLE, TN



DESIGNED BY: J.L.H.
DRAWN BY: K.M.Z.
CHECKED BY: NDOT
DATE: 3/18/2026
KIMLEY-HORN PROJECT NO. 118800066

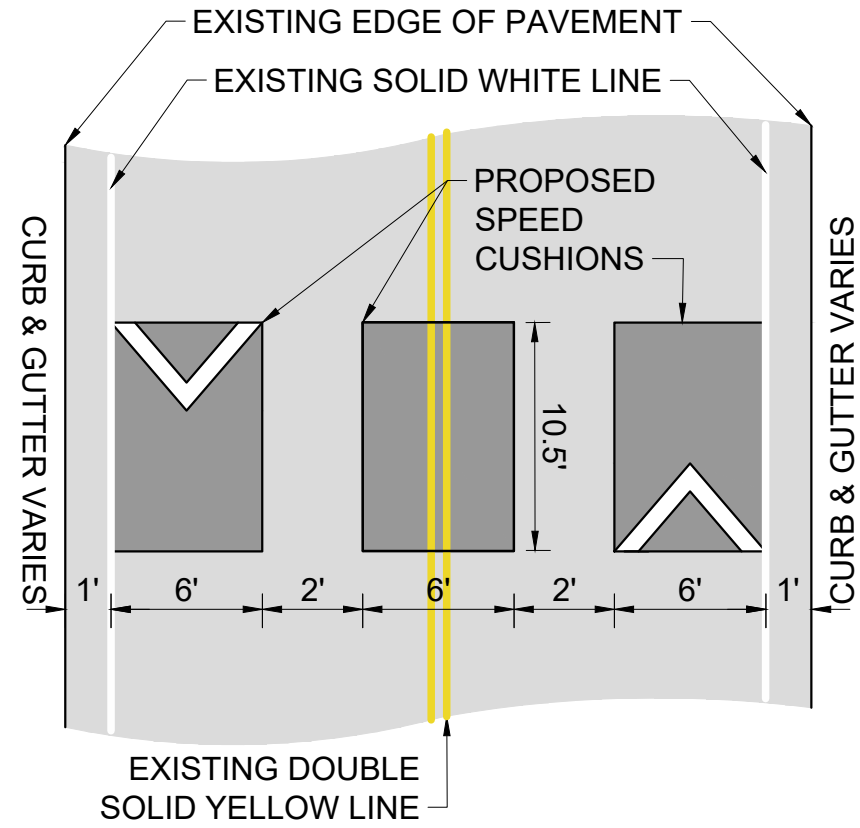
CONCEPT
SHEET NUMBER
03



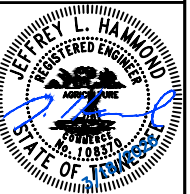
AERIAL IMAGERY SOURCE: NEARMAP

CONFIGURATION A

PAVEMENT WIDTH: 24'



PLANTATION DRIVE
TRAFFIC CALMING
NASHVILLE, TN



DESIGNED BY: J.L.H.
DRAWN BY: K.M.Z.
CHECKED BY: NDOT
DATE: 3/18/2026
KIMLEY-HORN PROJECT NO. 118800066

DETAIL

SHEET NUMBER
04

This document, together with the concepts and designs presented herein, as an instrument of service, is intended only for the specific purpose and client for which it was prepared. Reuse of and improper reliance on this document without written authorization and adaptation by Kimley-Horn and Associates, Inc. shall be without liability to Kimley-Horn and Associates, Inc.