

### ESTIMATED QUANTITIES

#### SPEED CUSHIONS

6' X 10.5' SPEED CUSHION WITH ONE ARROW	10
---	----

#### SIGNING

W17-1 (VAR.) "SPEED CUSHION" SIGN (30" X 30")	6
---	---

W17-1 (VAR.) "SPEED CUSHIONS AHEAD" SIGN (30" X 30")	2
--	---

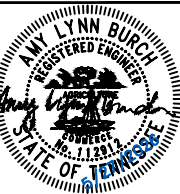
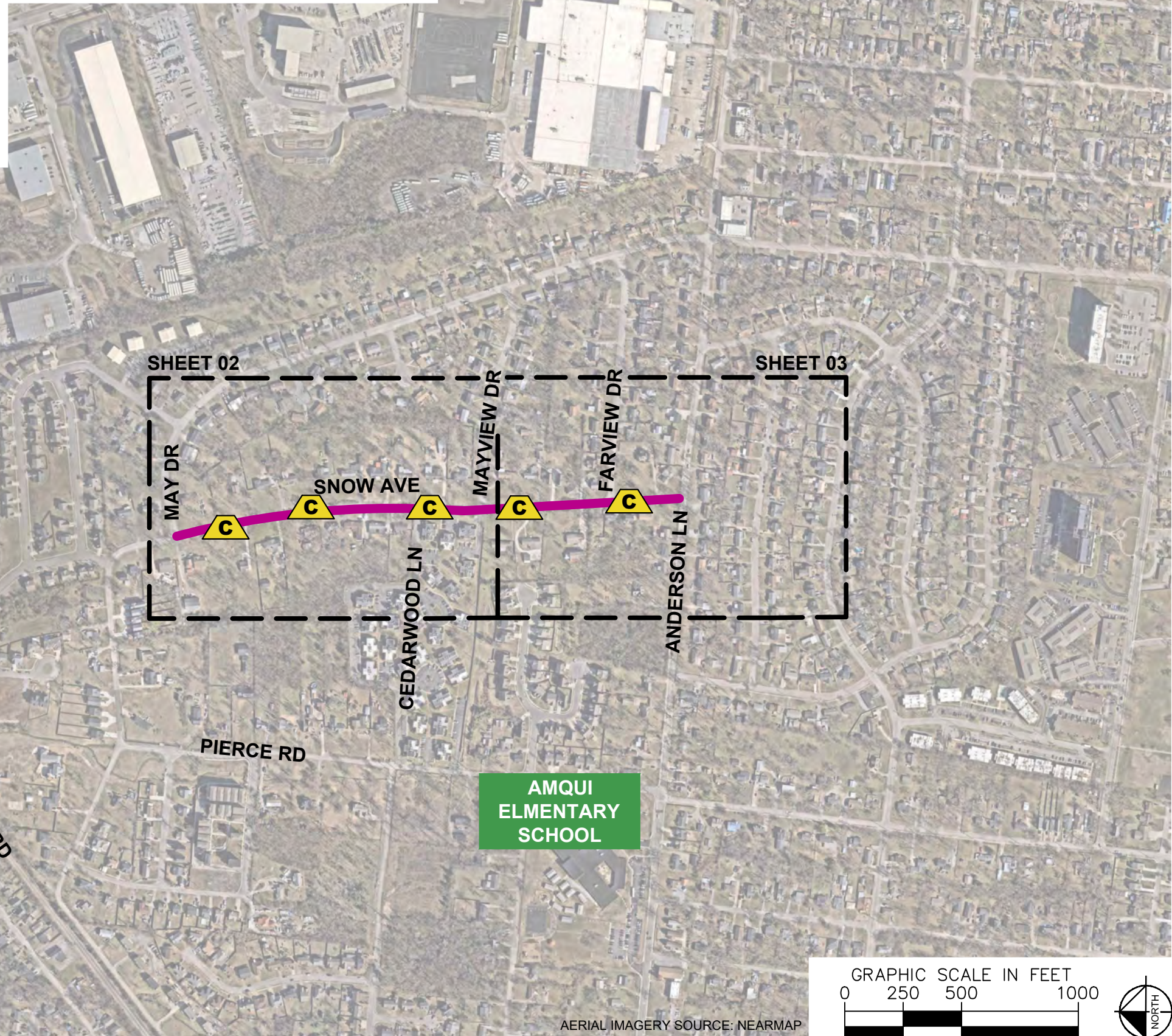
W13-1P "20 M.P.H" SIGN (18" X 18")	8
------------------------------------	---

**NOTE:** ALL LOCATIONS ARE REFERENCED FROM CENTERLINE OF DRIVEWAYS OR OTHER LANDMARKS TO THE CENTER OF SPEED CUSHIONS OR SIGNS.

### LEGEND

 LIMITS OF TRAFFIC CALMING PROJECT

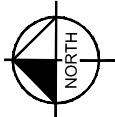
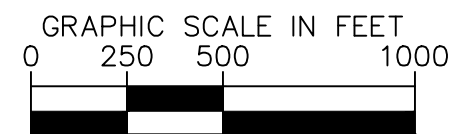
 SPEED CUSHIONS



DESIGNED BY: ALB  
DRAWN BY: KMZ  
CHECKED BY: NDOT  
DATE: 5/27/2026  
KIMLEY-HORN PROJECT NO. 118900066

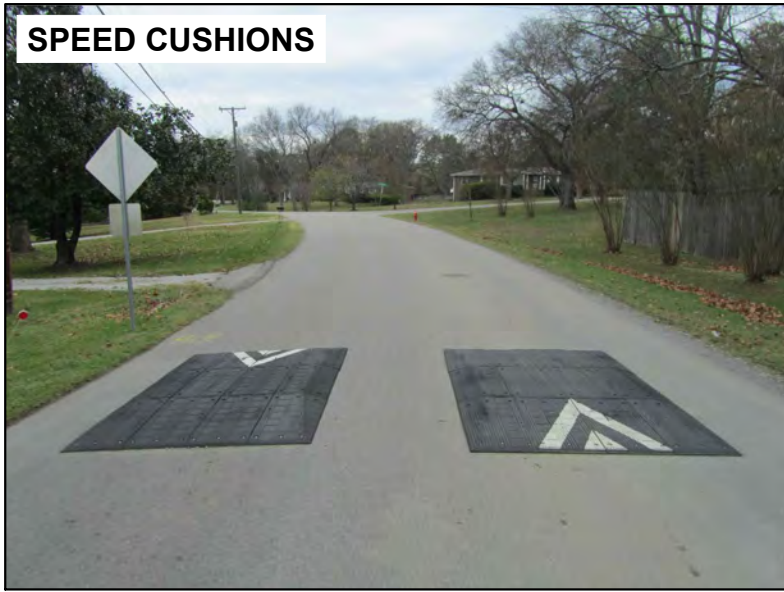
### KEY

SHEET NUMBER  
**01**



AERIAL IMAGERY SOURCE: NEARMAP

**SPEED CUSHIONS**



**SPEED CUSHION CONFIGURATION A**  
86' NORTH OF DRIVEWAY  
AT 1009 SNOW AVE

**SPEED CUSHION CONFIGURATION A**  
41' NORTH OF DRIVEWAY  
AT 1001 SNOW AVE

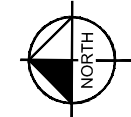
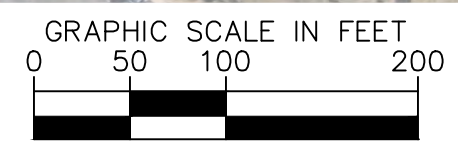
**SPEED CUSHION CONFIGURATION A**  
64' SOUTH OF DRIVEWAY  
OF CEDARWOOD LN

SPEED CUSHIONS AHEAD  
20 M.P.H.

SPEED CUSHIONS AHEAD  
20 M.P.H.

SPEED CUSHION  
20 M.P.H.

SPEED CUSHION  
20 M.P.H.



AERIAL IMAGERY SOURCE: NEARMAP



**SNOW AVE**  
TRAFFIC CALMING  
NASHVILLE, TN



DESIGNED BY:	ALB
DRAWN BY:	KMZ
CHECKED BY:	NDOT
DATE:	5/27/2025
KIMLEY-HORN PROJECT NO.:	118900066

**CONCEPT**  
SHEET NUMBER  
**02**

This document, together with the concepts and designs presented herein, is intended only for the specific purpose and client for which it was prepared. Reuse of and improper reliance on this document without written authorization and adaptation by Kimley-Horn and Associates, Inc. shall be without liability to Kimley-Horn and Associates, Inc.

This document, together with the concepts and designs presented herein, is intended only for the specific purpose and client for which it was prepared. Reuse of and improper reliance on this document without written authorization and adaptation by Kimley-Horn and Associates, Inc. shall be without liability to Kimley-Horn and Associates, Inc.



SPEED CUSHIONS



SNOW AVE  
TRAFFIC CALMING  
NASHVILLE, TN

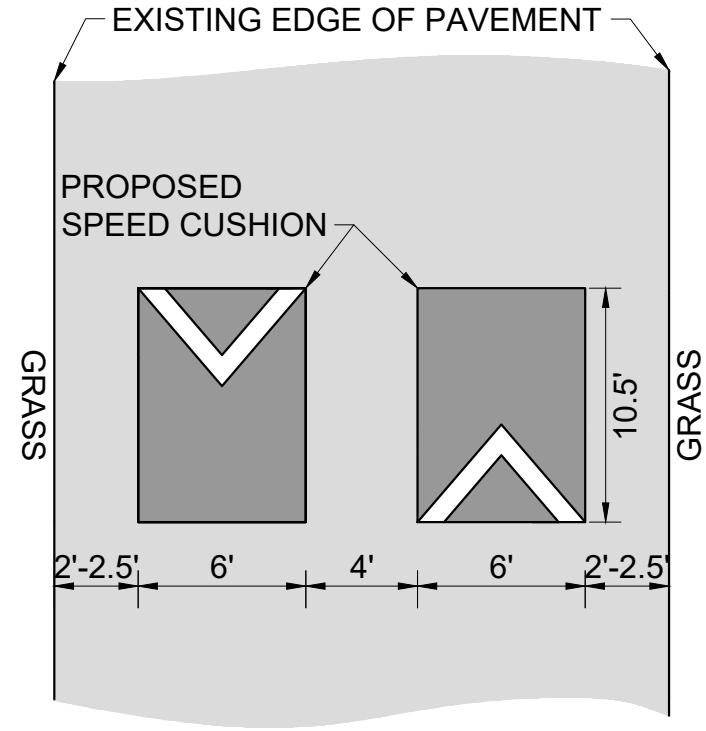


DESIGNED BY:	ALB
DRAWN BY:	KMZ
CHECKED BY:	NDOT
DATE:	5/27/2026
KIMLEY-HORN PROJECT NO.:	118900066

CONCEPT  
SHEET NUMBER  
03

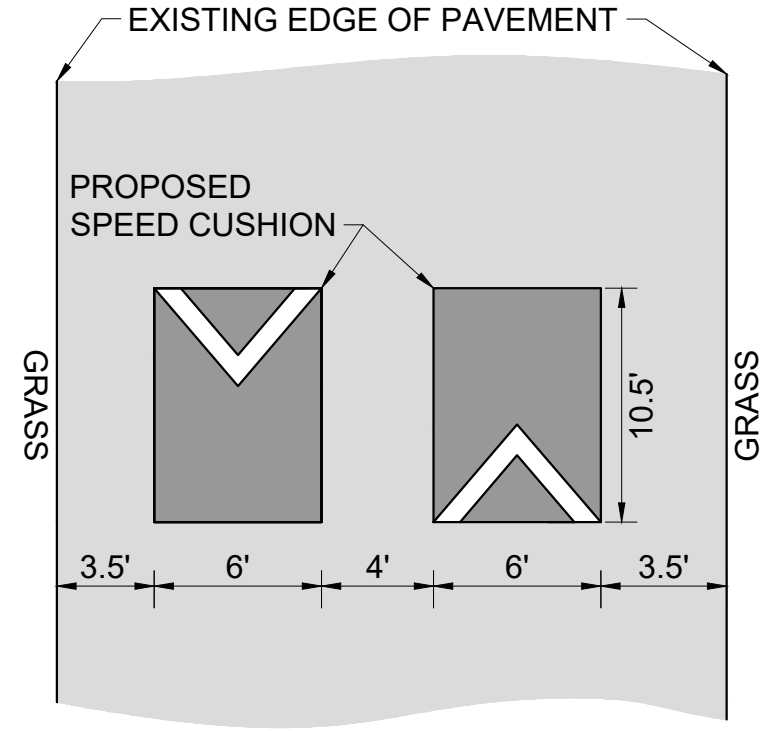
# CONFIGURATION A

PAVEMENT WIDTH: 20' - 21'



# CONFIGURATION B

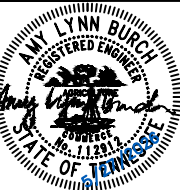
PAVEMENT WIDTH: 23'



This document, together with the concepts and designs presented herein, is intended only for the specific purpose and client for which it was prepared. Reuse of and improper reliance on this document without written authorization and adaptation by Kimley-Horn and Associates, Inc. shall be without liability to Kimley-Horn and Associates, Inc.



SNOW AVE  
TRAFFIC CALMING  
NASHVILLE, TN



DESIGNED BY: ALB  
DRAWN BY: KMZ  
CHECKED BY: NDOT  
DATE: 5/27/2026  
KIMLEY-HORN PROJECT NO. 118900066

**DETAIL**

SHEET NUMBER  
**04**