

Hospital Authority - At a Glance

Mission	To improve the health and wellness of our Nashville community by providing equitable access to comprehensive, coordinated, patient-centered care.		
Vision	To be the leader in exceptional community healthcare – One neighbor at a time.		
Budget Summary			
	<u>2024-25</u>	<u>2025-26</u>	<u>2026-27</u>
Expenditures and Transfers:			
GSD General Fund - Metro Subsidy	\$59,555,300	\$60,746,400	\$67,879,500
Total Expenditures and Transfers	<u>\$59,555,300</u>	<u>\$60,746,400</u>	<u>\$67,879,500</u>
Expenditures per Capita	\$80.85	\$81.44	\$89.90
Position	Total Budgeted Positions	508	508
		508	562
	* Prior to any service reduction or eliminations, if required		
Contacts	Board Chair: Christy Smith	email: merrillfa2000@gmail.com	
	Interim Chief Executive Officer: Dr. Veronica Elders	email: veronica.elders@nashvilleha.org	
	Interim Chief Financial Officer: Dr. Kemberly Blackledge	email: kemberly.blackledge@nashvilleha.org	
	1818 Albion Street 37208	Phone: 615-341-4491	

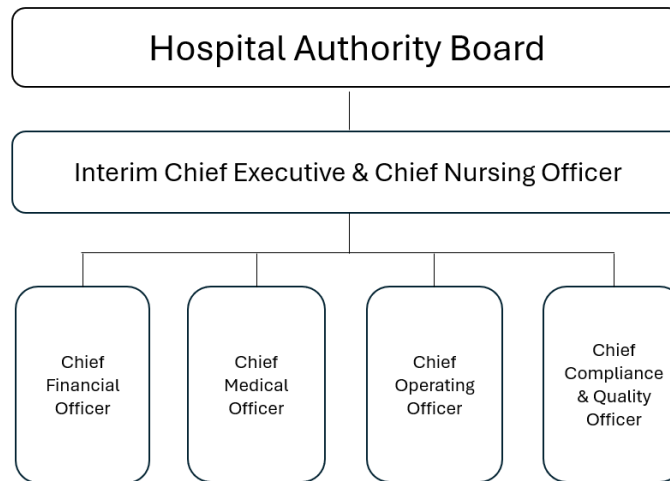
Since its inception as City Hospital in 1890, Nashville General Hospital (NGH) has been a stalwart advocate for the citizens of Nashville and Davidson County. Initially opened to serve desperately ill patients or those who could not care for themselves, NGH has grown into a multi-service, technologically-advanced facility that provides emergency services and acute care as well as ancillary and ambulatory services.

In 1998, the hospital was relocated to the campus of Meharry Medical College. Today, NGH is Joint Commission accredited and is the principal teaching hospital for Meharry clinical training. Meharry’s students encounter a broad range of medical-surgical experiences and are involved in community outreach and screening programs designed to foster early detection, improved health, and better understanding of general health related issues among the most underserved residents of Metropolitan Nashville and Davidson County.

With annual emergency room visits exceeding 30,000, and inpatient admissions greater than 2,400, NGH is an engaged and trusted community partner dedicated to better health and wellness for all segments of the community.

Hospital Authority - At a Glance

Organizational Structure



Clinical Programs and Services

MEDICAL

Cardiology
Endocrinology
Gastroenterology
Hematology/Oncology
Infectious Diseases
Laboratory
Nephrology
Neurology
Pediatrics
Primary Care
Pulmonology
Radiology
Rheumatology
Women's Services

SURGICAL

Anesthesiology
Ear, Nose & Throat (ENT)
General Surgery
Ophthalmology
Orthopedics
Podiatry
Pathology
Urology
Vascular Surgery

Ambulatory Services

Primary Care & Internal Medicine - Nashville Healthcare Center at NGH, MetroCenter, & Bordeaux
Radiology - Nashville Healthcare Diagnostic Center
Outpatient Infusion Center
Same Day Surgery
Our Kids Center

Graduate Medical Education Programs

Family Practice	Oval & Maxillofacial Dentistry
Internal Medicine	Occupational & Environmental
OB/GYN	Psychiatric
Pediatric Dentistry	Sports Medicine
General Practice Dentistry	Public Health & General Prevention

Health Sciences Education

Radiologic Technology
Cardiographic Technician (EKG) Certification
Medical Imaging Preceptorship in CT, MRI, & Mammography
Phlebotomy Technician
Certified Nursing Assistant Program (CNA)