

WELCOME!

THANK YOU FOR JOINING US



Plan to Play (P2P) is Nashville's countywide parks and greenways master plan, first created in 2017. Since then, a lot has changed and it is time for an update.

P2P 2026 asks:

1. What do Nashvillians need from parks and greenways today?

2. How should Nashville prioritize those needs with limited resources?

See the entire plan here:



This update assesses today's park system, and reflects community input, best practices, demographic and recreational trends, and other inputs to guide actions through 2031.



Visit each station to learn more!

PARKS BY THE NUMBERS



In 2026, Davidson County enjoys...

24,300+ ACRES OF PARKS AND OPEN SPACE



NEARLY 16,000 ACRES PROVIDED BY METRO PARKS
NEARLY 570 ACRES OF PARK LAND ADDED SINCE 2017

OTHER PARK PROVIDERS:

4.6K+

ACRES provided by Tennessee State Parks

3.7K+

ACRES provided by US Army Corps of Engineers

300+

ACRES provided by Other Metro Agencies

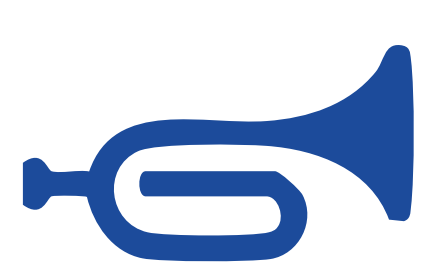
INDOOR FACILITIES:



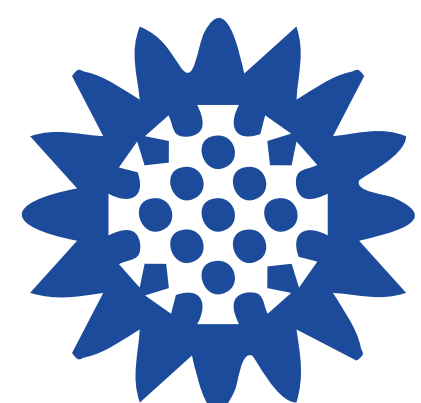
Centennial Sportsplex



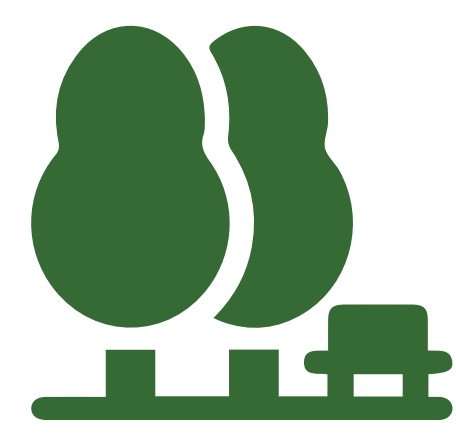
27 community centers



5 cultural arts facilities



4 nature centers



189 PARKS

130+



MILES OF GREENWAYS

+7.5 MILES OPENED SINCE 2017



25 historic sites and 1000s of historic features



161 playgrounds



114 multi-purpose sports fields



13 dog parks



6.5K acres of natural area

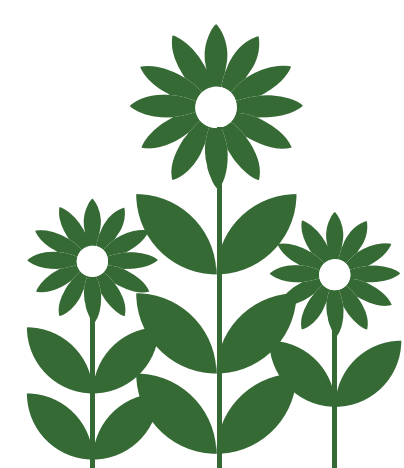


84 miles of hiking trails



75 basketball courts

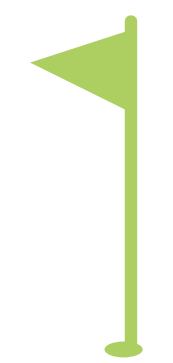
20 waterway access points



8 community gardens



6.3K trees planted annually

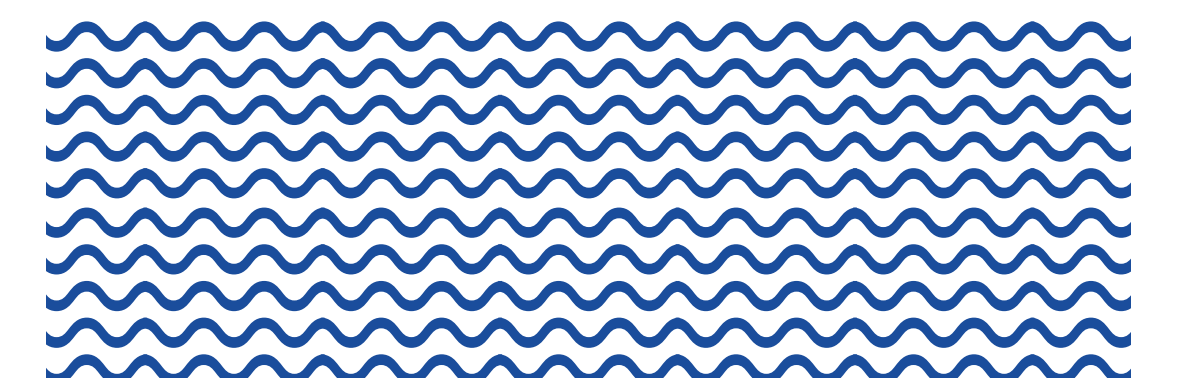


7 golf courses

20 swimming pools & splashpads



164 tennis & pickleball courts



2024 PARTICIPATION: 406K+ rounds of golf played

94K+ ts

230K+ community center youth program attendees

450K+ guests at Sportsplex, the Parthenon & Wave Country

695K+ special event attendees



THE ROADMAP FORWARD

Plan to Play 2026 addresses:



LAND



FACILITIES



PROGRAMS



OPERATIONS



FUNDING



GREENWAYS

Recommendations are plugged into a A FLEXIBLE, FIVE-YEAR ACTION PLAN.

Most recommendations are funding-dependent, so P2P 2026 utilizes a three-tiered structure, each based on a different funding scenario:

\$	\$\$	\$\$\$
TIER ONE: STABILIZE THE SYSTEM	TIER TWO: KEEP PACE WITH POPULATION GROWTH	TIER THREE: GO BIG
<ul style="list-style-type: none"> Assumes flat funding: historical Metro funding levels continue into the future Prioritizes \$217M in maintenance needs over system growth Funds selected projects that are existing commitments Explores policy, regulatory, funding and partnership strategies to accelerate system growth 	<p>TIER ONE PLUS:</p> <ul style="list-style-type: none"> Achieves sustainable lifecycle (maintenance) funding Adds land and facilities to maintain per-capita levels of service Adds maintenance, Park Police, and community center staff to keep up with growth Adds staff for full-time operation of nature centers and golf courses 	<p>TIERS ONE & TWO PLUS:</p> <ul style="list-style-type: none"> Adds parkland, greenways, and facilities faster than population growth to improve per capita levels of service countywide Adds staff across the board to keep up with growth

TAKING CARE OF WHAT WE HAVE

Metro Parks has identified more than **\$217,000,000** in maintenance needs.



Keeping parks, facilities and greenways in a state of good shape is smart, safe, and cost-effective. It also makes visits better for everyone! **P2P 2026** prioritizes:

**FIXING WHAT NEEDS
REPAIR NOW**

**PLANNING AND FUNDING
REGULAR UPKEEP**

By taking care of our existing parks first, we build a strong foundation for future growth.

P2P 2026 recommends:

\$

TIER ONE:

TIER ONE directs 70% of anticipated total funding, toward assertively addressing deferred maintenance and lifecycle needs in existing parks and facilities.

\$\$

TIER TWO:

TIER TWO adds lifecycle funding for all recommended new parks, greenways, and facilities over five years.

\$\$\$

TIER THREE:

TIER THREE adds lifecycle funding for all recommended new parks, greenways, and facilities over five years.

TAKING CARE OF WHAT WE HAVE

HOW WOULD YOU SPEND \$100 ON PARKS?

Put a sticky dot in the box for the category most important to you.



**REPAIR
EXISTING PARKS,
GREENWAYS,
AND FACILITIES**



**BUILD
NEW PARKS,
GREENWAYS,
AND FACILITIES**



**BUY LAND FOR
CURRENT AND
FUTURE NEEDS**

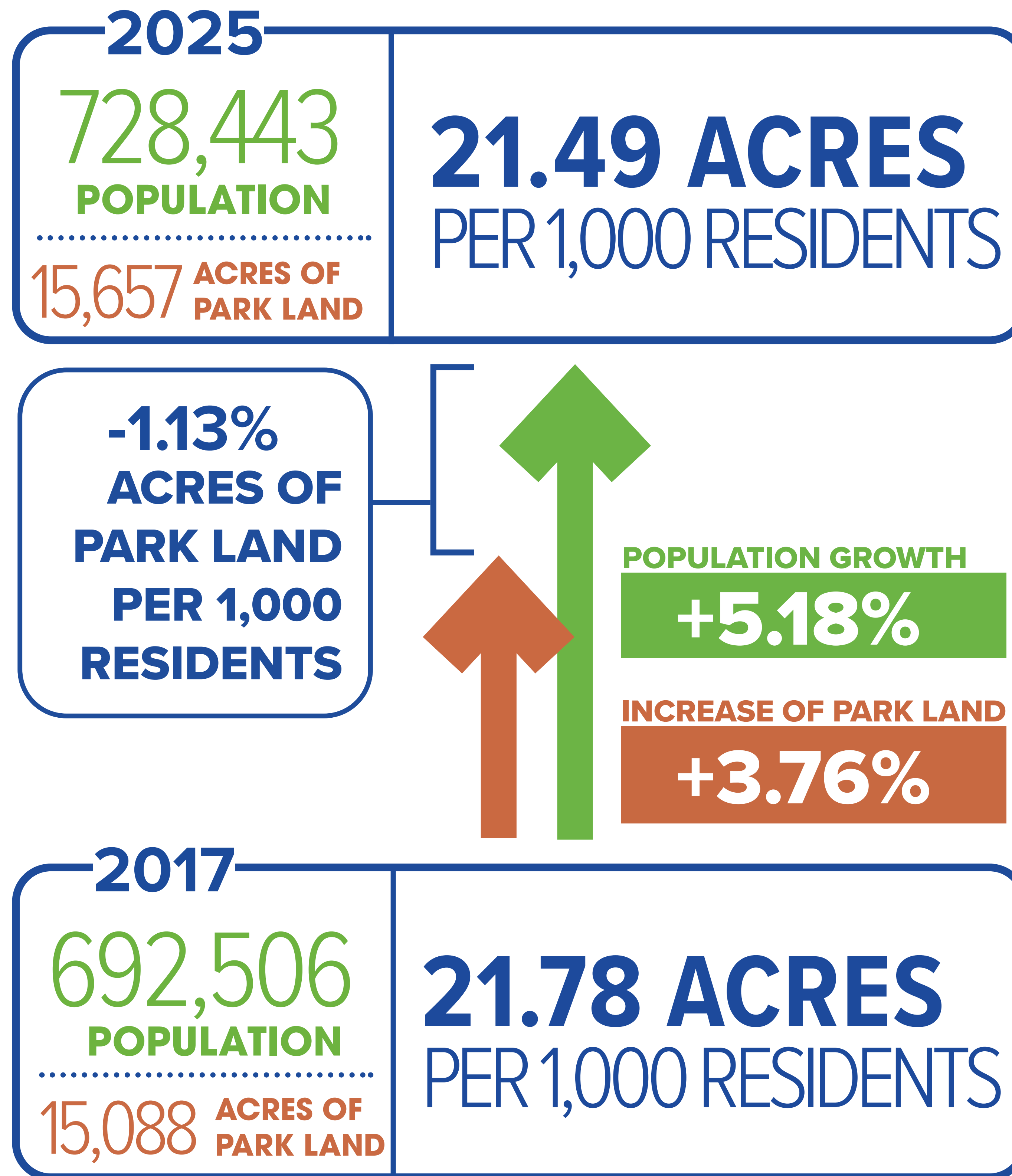


**EXPAND
PROGRAMS,
ACTIVITIES, AND
EXPERIENCES**

LAND IS THE FIRST BUILDING BLOCK

Land acquisition since 2017 has not kept up with population growth, which lowers our per-capita acreage.

Acreage Level of Service Comparison 2017 to 2025



Population Source: Boyd Center for Business and Economic Research, University of Tennessee, Knoxville. Inventory of Metro Parks Land as of August 2025

P2P 2026 recommends:

<div style="text-align: center;">\$</div> TIER ONE:	<div style="text-align: center;">\$\$</div> TIER TWO:	<div style="text-align: center;">\$\$\$</div> TIER THREE:
<p>With a budget based on historical funding levels, TIER ONE adds about 391 acres of new park, greenway, and open space land to the system. In this scenario, Nashville’s acres-per-capita metric continues to decline.</p>	<p>TIER ONE PLUS adds about 507 acres to maintain 2025 per capita level of service.</p>	<p>TIER ONE & TWO PLUS adds about 1,391 acres to improve on 2025 per capita level of service.</p>

LAND IS THE FIRST BUILDING BLOCK

P2P 2026 ESTABLISHES CRITERIA FOR PRIORITIZING LAND ACQUISITION

Put a sticky dot next to the criteria most important to you.

EQUITY AND ACCESS

- Is the site in an area currently underserved by parks?*
- Is the site in an area of high population density?*
- Is the surrounding population impacted by poverty, health disparities, historical oppression, poor air quality, or similar issues?*

SITE CHARACTERISTICS + CIRCUMSTANCES

- Is the site contiguous with existing park land?*
- Is the site on a greenway corridor or provide a key connection in the larger greenway network?*
- Does the site possess important natural or cultural resources, scenic qualities, good recreational potential, water access, or ecological function?*
- What are the liabilities associated with the site, including environmental concerns?*
- Is the site at risk for development and/or is acquisition time-sensitive?*

PARTNERSHIP OPPORTUNITIES

- Are there partners willing to be financial participants, reducing the funding burden on Metro Parks?*
- Is the site being offered as a donation, bargain sale, or at below market value?*
- If Metro is being asked to match private funds, will doing so divert public funding that could otherwise be allocated more equitably?*
- Does the site align with the mission and strategic goals of multiple Metro departments and present a shared-funding opportunity, for example, affordable housing, watershed protection, or active transportation?*

WORKING TOGETHER

Partnerships play a big role in growing and caring for our parks and greenways. By working with **private partners, non-profits, and other public agencies**, we can do more than we could alone. **P2P 2026** focuses on:

EXPANDING PARTNERSHIPS TO CREATE AND IMPROVE OPEN SPACES

BUILDING A FLEXIBLE “TOOLBOX” OF POLICIES AND PRACTICES TO GET THINGS DONE

FINDING NEW WAYS TO FUND AND SUPPORT PARKS AND GREENWAYS

Together, these efforts help us make the most of our resources and better serve the community.

Put a sticky dot next to the strategies you think are the most promising.

OPTIMIZE PHILANTHROPIC PARTNERSHIPS WITH NON-PROFIT SECTOR AND DONORS TO DELIVER PARKS, GREENWAYS, AND PROGRAMS.

PURSUE PARTNERSHIPS WITH THE PRIVATE SECTOR TO HELP DELIVER PARKS AND GREENWAYS, MAINTENANCE AND ACTIVATION.

ALIGN WITH *CHOOSE HOW YOU MOVE* TO INTEGRATE OPEN SPACE AT TRANSIT HUBS AND GREENWAY CONNECTIONS, AND OTHER METRO PLANS INCLUDING *NASHVILLE NEXT, WALK N BIKE, CONNECT DOWNTOWN, AND NEIGHBORHOOD / SMALL AREA PLANS.*

IDENTIFY OPPORTUNITIES WITH OTHER METRO DEPARTMENTS TO CO-LOCATE PARK AND GREENWAYS WITH AFFORDABLE HOUSING, LIBRARIES, SCHOOLS, AND OTHER CIVIC INFRASTRUCTURE.

COLLABORATE ON METRO PLANNING’S ECOLOGICAL CONSERVATION STRATEGY TO PRESERVE AND STEWARD AREAS OF HIGH ECOLOGICAL FUNCTION, AND PASSIVE RECREATIONAL VALUE.

EVALUATE EXISTING GREENWAYS AND OPEN SPACE REGULATIONS, INCLUDING GREENWAYS ORDINANCE, DOWNTOWN CODE, SP ZONING, AND FLOODPLAIN PROTECTIONS TO ASSESS SUCCESSES, LOOPHOLES, AND OUTCOMES.

SURVEY EXISTING SUCCESSFUL OPEN SPACE ORDINANCES AND OTHER POLICY TOOLS NATIONALLY TO IDENTIFY MODELS SUITABLE FOR NASHVILLE.

NEW FACILITIES SHOULD BE ADDED STRATEGICALLY



Fort Negley Phase One - Coming Soon!



Trinity Hills Park - Coming Soon!

Facilities are everything from greenway trails, community centers, and dog parks to pickleball courts, playgrounds, and swimming pools. Adding new facilities should be balanced with good maintenance of existing facilities. Level of Service (LOS) is a per capita measure of how Metro Parks is meeting the community's needs for facilities.



TIER ONE:

TIER ONE prioritizes deferred maintenance while including selected existing commitment projects that await additional funding:

- West Park Community Center
- Cedar Hill Miracle League Complex
- Whites Creek Greenway – Hartman to Buena Vista segment
- Charlotte Rail Corridor - Phase One

TIER TWO:

With additional funding, **TIER TWO** allows Nashville to implement more existing commitment projects, plus new facilities to maintain levels of service across the county:

- Madison Station Park
- Two Rivers Mansion Events Pavilion
- Harpeth River Greenway – Frist Property Segment
- Cumberland River Greenway – Oracle Bridge to Modera segment
- New playgrounds, dog parks, basketball and baseball fields, fitness stations, a swimming pool and a splashpad, lighting and artificial turf on sports fields

TIER THREE:

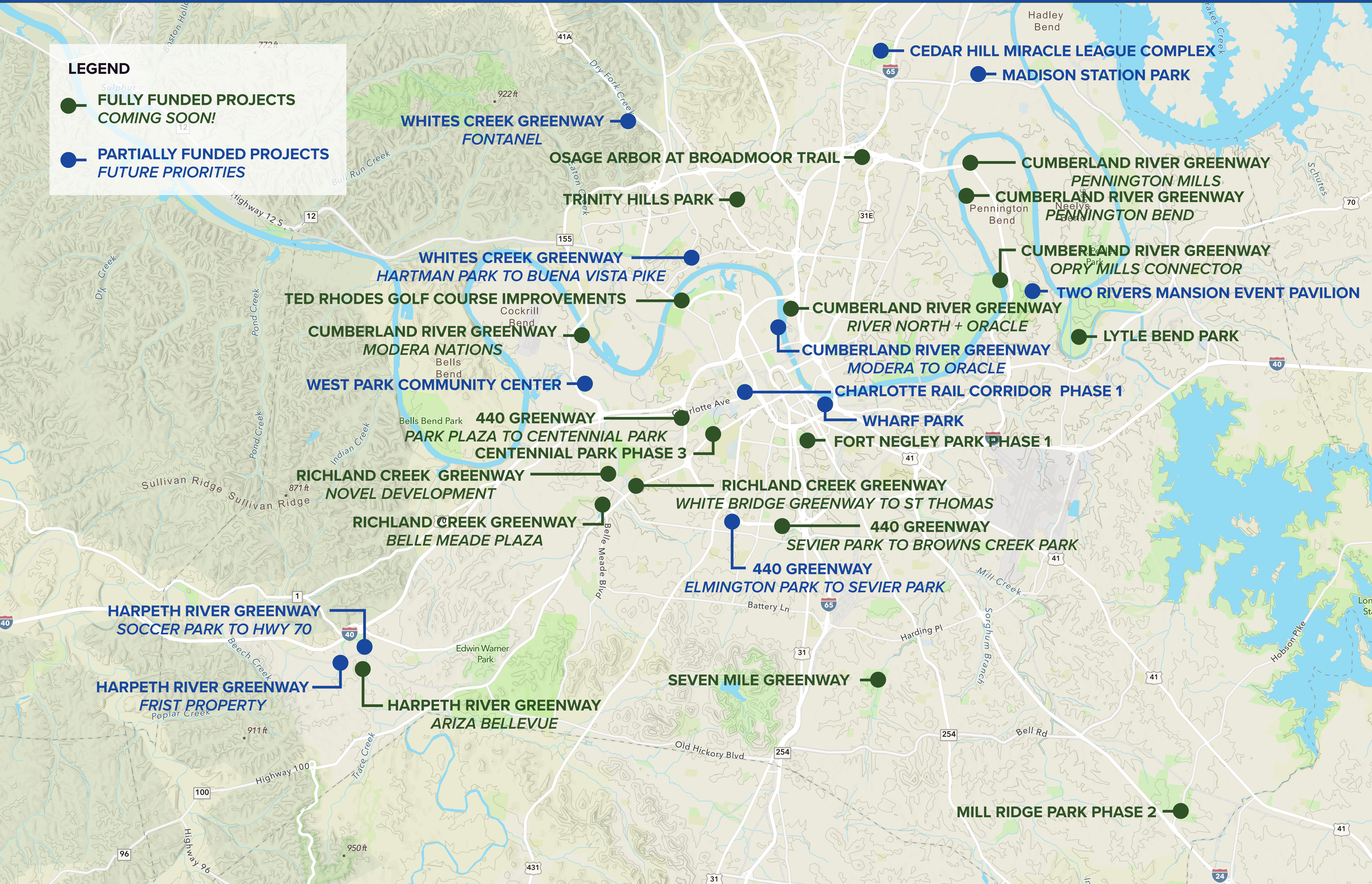
TIER THREE tackles remaining existing commitments, and goes big on a range of added facilities that outpace population growth and result in higher levels of service – with a price tag to match:

- Wharf Park
- 440 Greenway – Elmington Park to Sevier Park segment
- Harpeth River Greenway – Soccer Park to HWY 70 segment
- Whites Creek Greenway – Fontanel area segment
- New hiking trails, picnic shelters, playgrounds, dog parks, basketball and baseball fields, pickleball courts, fitness stations, several community centers, splashpads, a swimming pool, lighting and artificial turf on sports fields

NEW FACILITIES SHOULD BE ADDED STRATEGICALLY

LEGEND

-  FULLY FUNDED PROJECTS COMING SOON!
-  PARTIALLY FUNDED PROJECTS FUTURE PRIORITIES



NEW FACILITIES

Which facilities do you wish you had more of, close to home? Use sticky dots to select your top three.

PICKLEBALL



GREENWAYS/PAVED TRAILS



PICNIC SHELTERS



COMMUNITY CENTERS



OUTDOOR POOLS



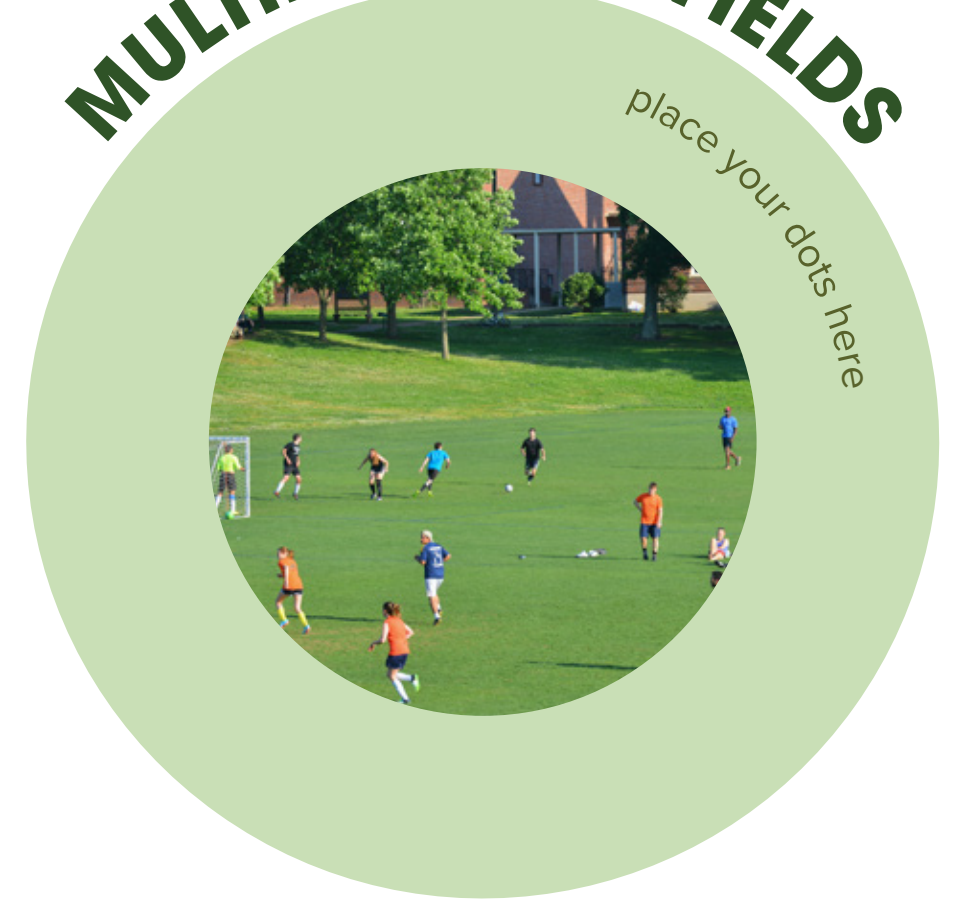
PLAYGROUNDS



DOG PARKS



MULTIPURPOSE FIELDS



BASKETBALL COURTS



TENNIS COURTS



BASEBALL



MOUNTAIN BIKE TRAILS



SKATE PARKS



SAND VOLLEYBALL



OUTDOOR FITNESS EQUIPMENT



DISC GOLF



HIKING TRAILS



COMMUNITY GARDENS



QUALITY FOOD SERVICE



GOLF COURSES



RIDES AT WAVE COUNTRY



BLUEWAYS AND WATER ACCESS



HISTORIC SITES



USE A POST-IT NOTE TO WRITE IN: WHAT FACILITIES DID WE MISS? WHAT WOULD YOU ADD?

A large, empty rectangular area for writing post-it notes, with a light green background.

MORE PARKS AND GREENWAYS REQUIRE MORE STAFF

As the park system grows, more employees are needed to support it.

P2P 2026 recommends:

\$

TIER ONE:

- Prioritizes existing commitments by adding staffing at existing facilities like nature centers and golf courses to allow them to operate with full-time hours.
- Adds staff at community centers for wait-listed programs like after-school and summer enrichment so that we don't have to turn families away.
- Adds maintenance, Park Police, and community center staff as more land, greenways, and facilities come on-line, for proper stewardship, public safety, and program growth.

\$\$

TIER TWO:

- Adds staff at community centers for wait-listed programs like after-school and summer enrichment so that we don't have to turn families away.
- Adds maintenance, Park Police, and community center staff as more land, greenways, and facilities come on-line, for proper stewardship, public safety, and program growth.

\$\$\$

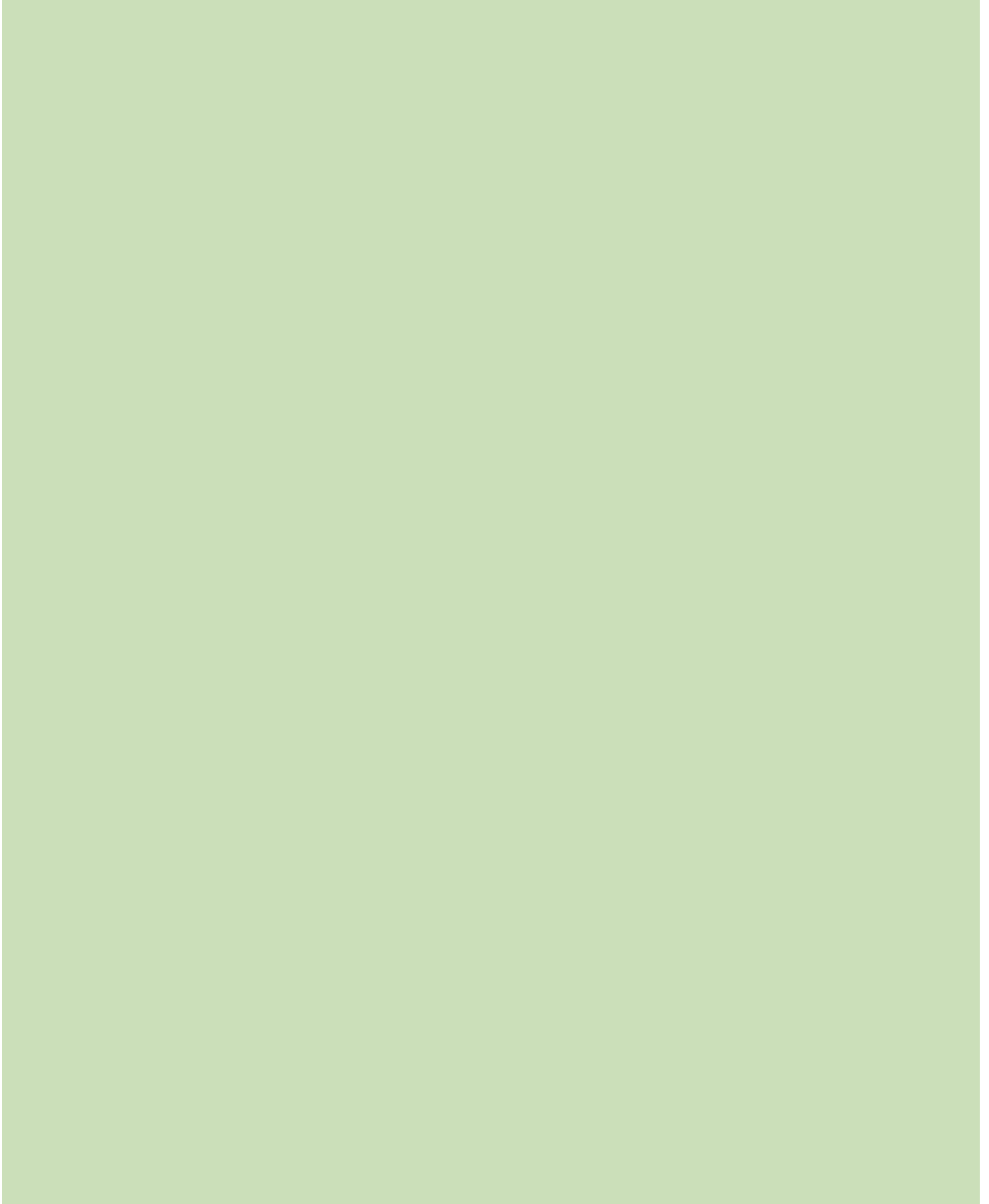
TIER THREE:

- Adds staff at community centers for wait-listed programs like after-school and summer enrichment so that we don't have to turn families away.
- Adds maintenance, Park Police, and community center staff as more land, greenways, and facilities come on-line, for proper stewardship, public safety, and program growth.



TELL US YOUR STORY

Nashville's parks and greenways enrich our lives in many ways. They are the setting for many special experiences – marriage proposals, encounters with nature, a special day with family or friends, and personal sports achievements. We would be honored for you to share a special park memory of your own.

A large, empty light green rectangular area intended for users to share their stories. The area is completely blank, providing a space for text input.