

# Average Daily Jail Population for May 2026

## Davidson County Correctional Facilities

### Criminal Justice Planning of Nashville and Davidson County

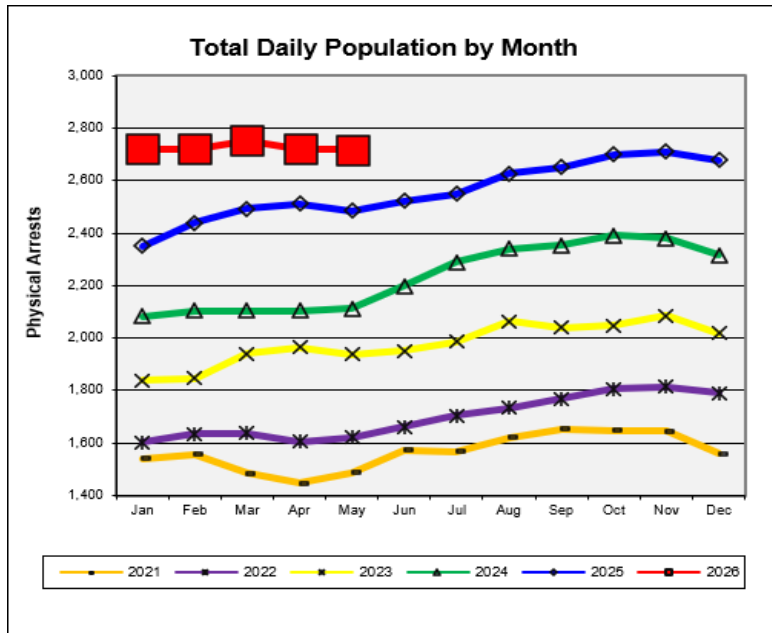
#### Overview

1. The ADP in May 2026 was 2,719, which was 0.1% lower than the previous month. The ADP was 9.4% higher than in May 2025, when the population was 2,486.
2. The ADP for Pretrial Felons was 1,274, which was 1.2% lower than the previous month but was 3.1% higher than the ADP of 1,235 in May 2025.
3. The ADP for Pretrial Misdemeanants was 177, which was 2.7% lower than the previous month, but was 5.4% higher than the ADP of 168 in May 2025.
4. In May 2026 the ADP for Convicted Misdemeanants & DUIs (CM+DUI) was 197. That was 6.1% higher than the previous month but was 8.6% lower than the ADP of 216 in May 2025.
5. The ADP for Locally Sentenced Felons (LSF) was 651. That was 4.4% higher than the previous month and was 29.9% higher than May 2025 when the ADP was 501.
6. State Sentenced Felons (TDOC) had an ADP of 173 in May 2026. That was 2.3% higher than the previous month and was 44.0% higher than May 2025 when the ADP was 120.
7. The average daily male population decreased to 2,411 (-0.4%). The female daily population was 308, a 2.3% increase over the previous month.
8. LSF inmates were 23.9% of the ADP, while Pretrial Felons (PTF) made up 46.8% of the ADP in May 2026.
9. Four Davidson County correctional facilities were over capacity during May 2026: DDC (103.1%), CDM (102.5%), CDF (116.7%), and MCC (106.2%).
10. The ADP of 2,719 for all DCSO facilities in May 2026 was 102.6% of the total system capacity of 2,650 beds.
11. There were 2,192 adult physical arrests made in May 2026. That was 11.0% more arrests than the previous month and was 9.0% more arrests than in May 2025.

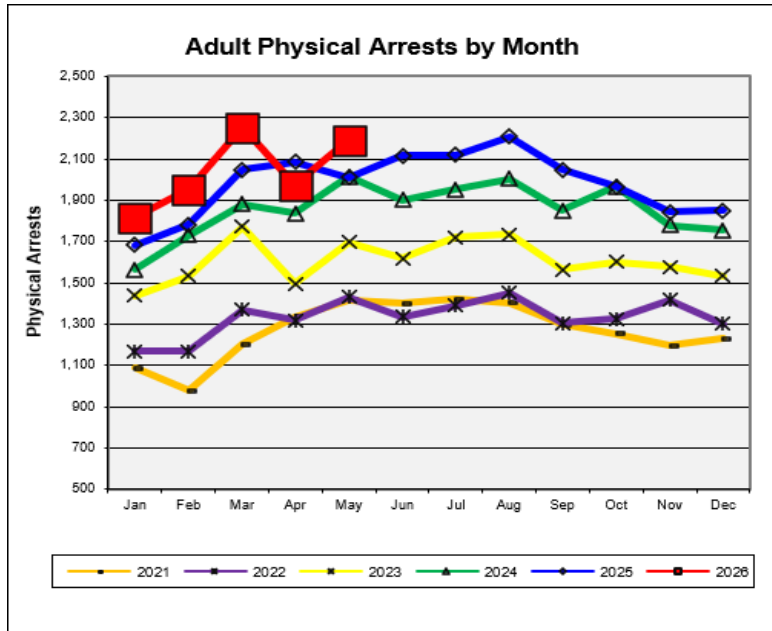
Disclaimer: All reports and other documents generated by Criminal Justice Planning are based on information drawn from databases owned and maintained by other agencies of state and local government. Therefore, Criminal Justice Planning cannot guarantee, or assume responsibility for, the accuracy or completeness of the data or information reflected in any reports or other documents.

## Charts of Five-Year Trends

### Average Daily Population by Month



### Adult Physical Arrests by Month



Source: DCSO Penjail data representing the 11:00pm facility count.

## Average Daily Population (ADP) – Current Year Compared to Previous Year

### Total All Classifications

Month	ADP 2025	ADP 2026	Percent Change from Previous Month	Percent Change from Previous Year
Jan	2,352	2,721	1.5%	15.7%
Feb	2,441	2,723	0.05%	11.5%
Mar	2,493	2,754	1.1%	10.5%
Apr	2,512	2,723	-1.1%	8.4%
May	2,486	2,719	-0.1%	9.4%
Jun	2,522	-	-	-
Jul	2,550	-	-	-
Aug	2,629	-	-	-
Sep	2,651	-	-	-
Oct	2,701	-	-	-
Nov	2,712	-	-	-
Dec	2,680	-	-	-
<b>Average</b>	<b>2,561</b>	<b>2,728</b>	<b>0.3%</b>	<b>11.1%</b>

### Annual Percent Change

Years	Percent Change
<b>2025-2026</b>	<b>6.5%</b>

### Pretrial Felons

Month	ADP 2025	ADP 2026	Percent Change from Previous Month	Percent Change from Previous Year
Jan	1,242	1,335	3.0%	7.5%
Feb	1,268	1,321	-1.1%	4.2%
Mar	1,254	1,315	-0.4%	4.9%
Apr	1,266	1,290	-2.0%	1.9%
May	1,235	1,274	-1.2%	3.1%
Jun	1,270	-	-	-
Jul	1,300	-	-	-
Aug	1,321	-	-	-
Sep	1,296	-	-	-
Oct	1,296	-	-	-
Nov	1,312	-	-	-
Dec	1,296	-	-	-
<b>Average</b>	<b>1,280</b>	<b>1,307</b>	<b>-0.3%</b>	<b>4.3%</b>

### Annual Percent Change

Years	Percent Change
<b>2025-2026</b>	<b>2.1%</b>

Source: DCSO Penjail data representing the 11:00pm facility count.

## Average Daily Population (ADP) – Current Year Compared to Previous Year

### Pretrial Misdemeanants

Month	ADP 2025	ADP 2026	Percent Change from Previous Month	Percent Change from Previous Year
Jan	158	187	-1.8%	17.9%
Feb	171	173	-7.0%	1.4%
Mar	180	179	3.1%	-0.7%
Apr	171	182	1.9%	6.3%
May	168	177	-2.7%	5.4%
Jun	188	-	-	-
Jul	193	-	-	-
Aug	203	-	-	-
Sep	193	-	-	-
Oct	191	-	-	-
Nov	197	-	-	-
Dec	190	-	-	-
<b>Average</b>	<b>184</b>	<b>180</b>	<b>-1.3%</b>	<b>6.1%</b>

### Annual Percent Change

Years	Percent Change
<b>2025-2026</b>	<b>-2.2%</b>

### Convicted Misdemeanants and DUI

Month	ADP 2025	ADP 2026	Percent Change from Previous Month	Percent Change from Previous Year
Jan	159	198	-4.4%	24.7%
Feb	177	186	-6.1%	5.1%
Mar	202	184	-1.1%	-8.8%
Apr	210	186	1.1%	-11.5%
May	216	197	6.1%	-8.6%
Jun	205	-	-	-
Jul	188	-	-	-
Aug	205	-	-	-
Sep	215	-	-	-
Oct	227	-	-	-
Nov	222	-	-	-
Dec	207	-	-	-
<b>Average</b>	<b>203</b>	<b>190</b>	<b>-0.9%</b>	<b>0.2%</b>

### Annual Percent Change

Years	Percent Change
<b>2025-2026</b>	<b>-6.1%</b>

Source: DCSO Penjail data representing the 11:00pm facility count.

## Average Daily Population (ADP) – Current Year Compared to Previous Year

### Locally Sentenced Felons

Month	ADP 2025	ADP 2026	Percent Change from Previous Month	Percent Change from Previous Year
Jan	438	553	-2.4%	26.2%
Feb	452	575	3.9%	27.0%
Mar	483	599	4.3%	24.0%
Apr	483	623	4.1%	29.1%
May	501	651	4.4%	29.9%
Jun	495	-	-	-
Jul	490	-	-	-
Aug	509	-	-	-
Sep	529	-	-	-
Oct	537	-	-	-
Nov	549	-	-	-
Dec	567	-	-	-
<b>Average</b>	<b>503</b>	<b>600</b>	<b>2.8%</b>	<b>27.3%</b>

#### Annual Percent Change

Years	Percent Change
<b>2025-2026</b>	<b>19.4%</b>

### Probation Violator Felons

Month	ADP 2025	ADP 2026	Percent Change from Previous Month	Percent Change from Previous Year
Jan	185	225	18.7%	21.6%
Feb	199	234	4.0%	17.4%
Mar	199	239	2.2%	20.4%
Apr	208	216	-9.6%	4.1%
May	195	193	-10.7%	-1.1%
Jun	191	-	-	-
Jul	198	-	-	-
Aug	193	-	-	-
Sep	198	-	-	-
Oct	201	-	-	-
Nov	200	-	-	-
Dec	189	-	-	-
<b>Average</b>	<b>196</b>	<b>221</b>	<b>0.9%</b>	<b>12.5%</b>

#### Annual Percent Change

Years	Percent Change
<b>2025-2026</b>	<b>12.8%</b>

Source: DCSO Penjail data representing the 11:00pm facility count.

## Average Daily Population (ADP) – Current Year Compared to Previous Year

### Probation Violator Misdemeanants

Month	ADP 2025	ADP 2026	Percent Change from Previous Month	Percent Change from Previous Year
Jan	41	40	-1.1%	-0.6%
Feb	42	42	3.8%	-0.3%
Mar	49	43	2.4%	-13.0%
Apr	44	48	10.9%	7.6%
May	43	46	-2.8%	6.7%
Jun	38	-	-	-
Jul	49	-	-	-
Aug	45	-	-	-
Sep	38	-	-	-
Oct	47	-	-	-
Nov	48	-	-	-
Dec	41	-	-	-
<b>Average</b>	<b>44</b>	<b>44</b>	<b>2.6%</b>	<b>0.1%</b>

#### Annual Percent Change

Years	Percent Change
<b>2025-2026</b>	<b>0.2%</b>

### State Sentenced Felons to TN Department of Corrections (TDOC)

Month	ADP 2025	ADP 2026	Percent Change from Previous Month	Percent Change from Previous Year
Jan	122	177	-3.0%	45.0%
Feb	123	183	3.2%	48.9%
Mar	118	185	1.2%	56.9%
Apr	122	169	-8.4%	38.9%
May	120	173	2.3%	44.0%
Jun	127	-	-	-
Jul	123	-	-	-
Aug	145	-	-	-
Sep	174	-	-	-
Oct	194	-	-	-
Nov	178	-	-	-
Dec	182	-	-	-
<b>Average</b>	<b>144</b>	<b>177</b>	<b>-1.0%</b>	<b>46.8%</b>

#### Annual Percent Change

Years	Percent Change
<b>2025-2026</b>	<b>23.1%</b>

Source: DCSO Penjail data representing the 11:00pm facility count.

## Average Daily Population (ADP) – Current Year Compared to Previous Year

### All Other Inmates

Month	ADP 2025	ADP 2026	Percent Change from Previous Month	Percent Change from Previous Year
Jan	7	6	-14.5%	-18.6%
Feb	8	9	46.6%	5.5%
Mar	9	10	8.5%	7.6%
Apr	7	9	-4.6%	25.5%
May	7	8	-15.2%	4.3%
Jun	8	-	-	-
Jul	8	-	-	-
Aug	8	-	-	-
Sep	8	-	-	-
Oct	8	-	-	-
Nov	7	-	-	-
Dec	7	-	-	-
<b>Average</b>	<b>8</b>	<b>8</b>	<b>4.2%</b>	<b>4.8%</b>

### Annual Percent Change

Years	Percent Change
<b>2025-2026</b>	<b>5.4%</b>

Note: Other Inmates include Civil Contempt, Federal holds or detainers, and inmates where the classification is missing or can't be determined.

Source: DCSO Penjail data representing the 11:00pm facility count.

## Average Daily Population by Gender – Current Year Compared to Previous Year

### Average Daily Population (ADP) of Males

Month	ADP 2025	ADP 2026	Percent Change from Previous Month	Percent Change from Previous Year
Jan	2,099	2,414	1.6%	15.0%
Feb	2,178	2,425	0.5%	11.3%
Mar	2,227	2,457	1.3%	10.3%
Apr	2,244	2,422	-1.4%	7.9%
May	2,215	2,411	-0.4%	8.8%
Jun	2,253	-	-	-
Jul	2,270	-	-	-
Aug	2,320	-	-	-
Sep	2,337	-	-	-
Oct	2,393	-	-	-
Nov	2,398	-	-	-
Dec	2,375	-	-	-
<b>Average</b>	<b>2,276</b>	<b>2,426</b>	<b>0.3%</b>	<b>10.7%</b>

#### Annual Percent Change

Years	Percent Change
<b>2025-2026</b>	<b>6.6%</b>

### Average Daily Population (ADP) of Females

Month	ADP 2025	ADP 2026	Percent Change from Previous Month	Percent Change from Previous Year
Jan	253	308	0.8%	21.4%
Feb	263	298	-3.3%	13.2%
Mar	266	296	-0.4%	11.6%
Apr	268	301	1.6%	12.5%
May	271	308	2.3%	13.7%
Jun	269	-	-	-
Jul	280	-	-	-
Aug	309	-	-	-
Sep	314	-	-	-
Oct	308	-	-	-
Nov	314	-	-	-
Dec	305	-	-	-
<b>Average</b>	<b>285</b>	<b>302</b>	<b>0.2%</b>	<b>14.5%</b>

#### Annual Percent Change

Years	Percent Change
<b>2025-2026</b>	<b>6.0%</b>

Source: DCSO Penjail data representing the 11:00pm facility count.

## Percentage of Average Daily Population (ADP)

### Percentage of Each Inmate Classification in the ADP

Month 2026	ADP Total	PTF	PTM	CM and DUI	LSF	PVF	PVM	OTHER	TDOC
Jan	2,721	49.1%	6.9%	7.3%	20.3%	8.3%	1.5%	0.2%	6.5%
Feb	2,723	48.5%	6.4%	6.8%	21.1%	8.6%	1.5%	0.3%	6.7%
Mar	2,754	47.8%	6.5%	6.7%	21.8%	8.7%	1.6%	0.4%	6.7%
Apr	2,723	47.4%	6.7%	6.8%	22.9%	7.9%	1.8%	0.3%	6.2%
May	2,719	46.8%	6.5%	7.3%	23.9%	7.1%	1.7%	0.3%	6.4%
Jun	-	-	-	-	-	-	-	-	-
Jul	-	-	-	-	-	-	-	-	-
Aug	-	-	-	-	-	-	-	-	-
Sep	-	-	-	-	-	-	-	-	-
Oct	-	-	-	-	-	-	-	-	-
Nov	-	-	-	-	-	-	-	-	-
Dec	-	-	-	-	-	-	-	-	-
<b>Average</b>	<b>2,728</b>	<b>47.9%</b>	<b>6.6%</b>	<b>7.0%</b>	<b>22.0%</b>	<b>8.1%</b>	<b>1.6%</b>	<b>0.3%</b>	<b>6.5%</b>

**Notes:**

ADP = Average Daily Population

PTF = Pretrial Felons

PTM = Pretrial Misdemeanants

CM and DUI = Convicted Misdemeanants and DUIs

LSF = Locally Sentenced Felons

PVF = Probation Violators Felons

PVM = Probation Violators Misdemeanants

OTHER = All other inmate classifications including Federal, Civil, Detainers, None

TDOC = State Sentenced Felons to TN Department of Corrections

Source: DCSO Penjail data representing the 11:00pm facility count.

## Average Daily Population (ADP) By Facility

DDC – Downtown Detention Center (formerly Criminal Justice Center) (a)

Capacity = 762

2026 Month	ADP	Monthly Change	Percent Capacity
Jan	793	3.1%	104.1%
Feb	802	1.1%	105.3%
Mar	808	0.7%	106.0%
Apr	787	-2.6%	103.3%
May	786	-0.1%	103.1%
Jun	-	-	-
Jul	-	-	-
Aug	-	-	-
Sep	-	-	-
Oct	-	-	-
Nov	-	-	-
Dec	-	-	-
<b>Average</b>	<b>795</b>	<b>0.4%</b>	<b>104.4%</b>

CDM – Correctional Development Center Male (f)

Capacity = 768

2026 Month	ADP	Monthly Change	Percent Capacity
Jan	788	1.4%	102.5%
Feb	785	-0.3%	102.2%
Mar	790	0.6%	102.9%
Apr	795	0.6%	103.5%
May	787	-1.0%	102.5%
Jun	-	-	-
Jul	-	-	-
Aug	-	-	-
Sep	-	-	-
Oct	-	-	-
Nov	-	-	-
Dec	-	-	-
<b>Average</b>	<b>789</b>	<b>0.3%</b>	<b>102.7%</b>

## Average Daily Population (ADP) By Facility

### CDF – Correctional Development Center Female (b)

Capacity = 252

2026 Month	ADP	Monthly Change	Percent Capacity
Jan	301	0.6%	119.4%
Feb	290	-3.4%	115.3%
Mar	291	0.1%	115.4%
Apr	292	0.5%	115.9%
May	294	0.7%	116.7%
Jun	-	-	-
Jul	-	-	-
Aug	-	-	-
Sep	-	-	-
Oct	-	-	-
Nov	-	-	-
Dec	-	-	-
<b>Average</b>	<b>294</b>	<b>-0.3%</b>	<b>116.5%</b>

### MCC – Maximum Correctional Center (b)

Capacity = 508

2026 Month	ADP	Monthly Change	Percent Capacity
Jan	553	-1.1%	108.8%
Feb	550	-0.4%	108.3%
Mar	557	1.2%	109.6%
Apr	543	-2.5%	106.9%
May	540	-0.6%	106.2%
Jun	-	-	-
Jul	-	-	-
Aug	-	-	-
Sep	-	-	-
Oct	-	-	-
Nov	-	-	-
Dec	-	-	-
<b>Average</b>	<b>549</b>	<b>-0.7%</b>	<b>108.0%</b>

## Average Daily Population (ADP) By Facility

BCC – Behavioral Care Center (h)

Capacity = 60

2026 Month	ADP	Monthly Change	Percent Capacity
Jan	17	-2.7%	28.5%
Feb	22	30.7%	37.3%
Mar	24	8.3%	40.4%
Apr	27	9.7%	44.3%
May	30	12.8%	50.0%
Jun	-	-	-
Jul	-	-	-
Aug	-	-	-
Sep	-	-	-
Oct	-	-	-
Nov	-	-	-
Dec	-	-	-
<b>Average</b>	<b>24</b>	<b>11.7%</b>	<b>40.1%</b>

ANX – Annex (formerly Offender Re-Entry Center) (g)

Capacity = 300

2026 Month	ADP	Monthly Change	Percent Capacity
Jan	270	4.7%	89.8%
Feb	272	0.9%	90.6%
Mar	284	4.5%	94.7%
Apr	280	-1.6%	93.2%
May	283	1.2%	94.3%
Jun	-	-	-
Jul	-	-	-
Aug	-	-	-
Sep	-	-	-
Oct	-	-	-
Nov	-	-	-
Dec	-	-	-
<b>Average</b>	<b>278</b>	<b>1.9%</b>	<b>92.5%</b>

Source: DCSO Penjail data representing the 11:00pm facility count.

## Average Daily Population (ADP) By Facility

### HDC – Hill Detention Center (e)

Capacity = 0

2026 Month	ADP	Monthly Change	Percent Capacity
Jan	0	0.0%	n/a
Feb	0	0.0%	n/a
Mar	0	0.0%	n/a
Apr	0	0.0%	n/a
May	0	0.0%	n/a
Jun	-	-	-
Jul	-	-	-
Aug	-	-	-
Sep	-	-	-
Oct	-	-	-
Nov	-	-	-
Dec	-	-	-
<b>Average</b>	<b>0</b>	<b>0.0%</b>	<b>n/a</b>

### MDF – Metro Davidson County Detention Facility (c)

Capacity = 0

2026 Month	ADP	Monthly Change	Percent Capacity
Jan	0	0.0%	n/a
Feb	0	0.0%	n/a
Mar	0	0.0%	n/a
Apr	0	0.0%	n/a
May	0	0.0%	n/a
Jun	-	-	-
Jul	-	-	-
Aug	-	-	-
Sep	-	-	-
Oct	-	-	-
Nov	-	-	-
Dec	-	-	-
<b>Average</b>	<b>0</b>	<b>0.0%</b>	<b>n/a</b>

## Average Daily Population (ADP) by Facility

Total All Facilities (d)

Capacity = 2,650

2026 Month	ADP	Monthly Change	Percent Capacity	System Capacity
Jan	2,721	1.5%	102.7%	2,650
Feb	2,723	0.05%	102.7%	2,650
Mar	2,754	1.1%	103.9%	2,650
Apr	2,723	-1.1%	102.8%	2,650
May	2,719	-0.1%	102.6%	2,650
Jun	-	-	-	2,650
Jul	-	-	-	2,650
Aug	-	-	-	2,650
Sep	-	-	-	2,650
Oct	-	-	-	2,650
Nov	-	-	-	2,650
Dec	-	-	-	2,650
<b>Average</b>	<b>2,728</b>	<b>0.3%</b>	<b>102.9%</b>	<b>2,650</b>

Last Date Facility was Below 100% Capacity

As of 5/31/2026

Facility	Last Date Below Capacity	Current Consecutive Days Over Capacity
<b>DDC</b>	<b>5/1/26</b>	<b>30</b>
<b>CDM</b>	<b>5/14/26</b>	<b>17</b>
<b>CDF</b>	<b>5/19/25</b>	<b>377</b>
HDC	5/31/26	0
ANX	5/31/26	0
BCC	5/31/26	0
<b>MCC</b>	<b>1/13/25</b>	<b>503</b>
MDF	5/31/26	0

Source: DCSO Penjail data representing the 11:00pm facility count.

## Average Daily Population (ADP) Facility Notes

### Notes on Facility Capacity Changes

- (a) Capacity at CJC increased to 807 from 705 in October 2007 through recertification. Capacity decreased to 800 in November 2012 and again to 788 in August 2013. CJC closed for renovation on 8/13/16. On 4/16/2020 it began housing inmates and was renamed DDC; new capacity is 762.
- (b) CDF opened in March 2006 when all female inmates were moved there from MDF. In May 2016 all females were moved out of CDF and into MDF; then in August 2016 CDF reopened as MCC (Maximum Correctional Center) and began housing male inmates because of renovations at CJC. The capacity at MCC remained at 508. In May 2020, MCC was renamed back to CDF and females were moved from MDF to CDF. Starting 6/25/2020, males testing positive for COVID19 were temporarily housed at CDF. Starting December 2020 due to the temporary closing of MDF, females were housed at CDF (capacity 252), males were housed at MCC (capacity 508).
- (c) Capacity for MDF increased to 1,092 from 892 on 11/1/2005 through recertification. It increased to 1,348 in June 2011. Locally sentenced felon females were moved there in July 2011. In May 2016 all-female inmates were moved to MDF because of renovations at CJC. In May 2020, females were moved out of MDF back to CDF. In December 2020, inmates were moved out of MDF into MCC, and the facility was temporarily closed by 12/7/2020. Starting Feb 2021, MDF was sometimes used to temporarily house inmates moved from other facilities due to environmental reasons; system capacity remained the same.
- (d) Total capacity for all facilities increased from 3,679 to 3,781 in October 2007; from 3,781 to 3,842 in December 2007; from 3,842 to 4,010 in March 2008, from 4,010 to 4,266 in June 2011. It decreased to 4,259 in November 2012, and again to 4,247 in August 2013. With the temporary closing of CJC in August 2016 due to renovations, the capacity became 3,459. In April 2019, ORC closed so the capacity decreased to 3,159. CJC reopened as DDC in April 2020, resulting in a new capacity of 3,921. In May 2020 the HDC closed, resulting in a capacity of 3,386. The capacity increased to 3,446 on 9/14/2020 with the opening of BCC. On 12/7/2020, system capacity decreased to 2,350 with the temporary closing of MDF and resulting changes to MCC and CDF. On 9/14/2025, total beds increased to 2,500 with the reopening of the ORC as ANX and increased again to 2,650 when ANX increased in November 2025.
- (e) Total capacity for HDC increased from 474 to 535 in December 2007. Booking functions were moved to HDC in August 2016 due to renovations at CJC, but the capacity remained at 535. HDC was closed on 5/6/2020 and all inmates were moved to DDC.
- (f) Total capacity for CDM increased from 600 to 768 in March 2008.
- (g) ORC temporarily closed in March 2011. It reopened in May 2016 to house inmates due to renovations at CJC; capacity was 300. ORC was closed on 4/7/2019. ORC reopened on 9/14/2025 with a capacity of 150; capacity increased to 300 on 11/16/25.
- (h) BCC opened on 9/14/2020 with a capacity of 60, comprised of 30 males and 30 females.

Source: DCSO Penjail data representing the 11:00pm facility count.

## Physical Arrests

### Number of Physical Arrests – Current Year Compared to Previous Year

Month	2025	2026	Monthly Percent Change	Yearly Percent Change	Percent Change Since January 2026
Jan	1,682	1,816	-1.9%	8.0%	
Feb	1,780	1,953	7.5%	9.7%	7.5%
Mar	2,049	2,251	15.3%	9.9%	24.0%
Apr	2,086	1,974	-12.3%	-5.4%	8.7%
May	2,011	2,192	11.0%	9.0%	20.7%
Jun	2,115	-	-	-	-
Jul	2,118	-	-	-	-
Aug	2,208	-	-	-	-
Sep	2,048	-	-	-	-
Oct	1,964	-	-	-	-
Nov	1,843	-	-	-	-
Dec	1,851	-	-	-	-
<b>Total</b>	<b>23,755</b>	<b>10,186</b>	<b>Avg: 3.9%</b>	<b>Avg: 6.2%</b>	<b>20.7%</b>

### Number of Physical Arrests – Total Year to Date (YTD) Compared to Previous Year

Month	2025 Year to Date	2026 Year to Date	Percent Change from 2025 YTD to 2026 YTD
Jan	1,682	1,816	8.0%
Feb	3,462	3,769	8.9%
Mar	5,511	6,020	9.2%
Apr	7,597	7,994	5.2%
May	9,608	10,186	6.0%
Jun	11,723	-	-
Jul	13,841	-	-
Aug	16,049	-	-
Sep	18,097	-	-
Oct	20,061	-	-
Nov	21,904	-	-
Dec	23,755	-	-

**Notes:**

The chart shows the number of adult physical arrests made in Davidson County. A physical arrest is a custodial arrest and represents an individual body regardless of the number of charges issued. Expungements are removed.

Source: Metropolitan Nashville Police Department, data pulled on 6/15/2026.